

District: Family Foundations Academy
Address: 170 Lukens Drive, New Castle DE 19720
Principal: Aaron Bass
AYP: Met

Telephone: (302) 324-8901
Web: www.familyfoundationsacademy.org/

School Demographics

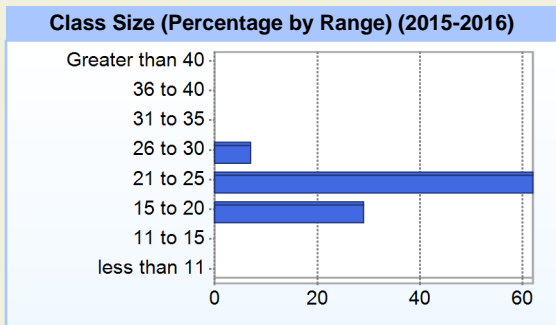
Fall Enrollment		
	2015	2016
Kindergarten	118	105
Grade 1	122	103
Grade 2	112	104
Grade 3	93	103
Grade 4	84	85
Grade 5	53	80
Grade 6	91	62
Grade 7	60	86
Grade 8	78	64
Total	811	792

Enrollment by Race/Ethnicity		
	2015	2016
African American	79.9%	79.8%
American Indian	0.6%	0.8%
Asian	1.5%	1.5%
Hawaiian	1.4%	1.1%
Hispanic/Latino	12.5%	9.7%
White	4.1%	6.8%
Multi-Racial	0.1%	0.3%

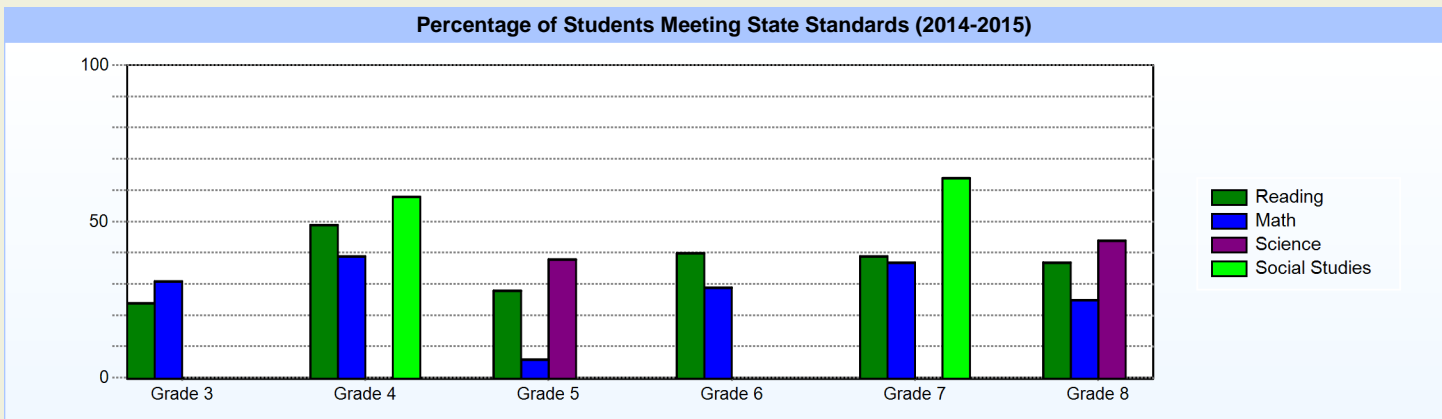
Other Student Characteristics		
	2015	2016
English Language Learner	1.8%	2.5%
Low Income	44.4%	51.0%
Special Education	5.3%	8.6%
Enrolled for Full Year	96.1%	N/A

School Promotion by Grade	
	2015
Kindergarten	96.6%
Grade 1	100.0%
Grade 2	99.1%
Grade 3	100.0%
Grade 4	100.0%
Grade 5	100.0%
Grade 6	100.0%
Grade 7	98.3%
Grade 8	98.7%

Recently Arrived ELL Students	
	2016
Number of Students Not Tested on ELA Assessment	0



Student Achievement



Exemplary Programs

Family Foundations Academy Charter School is a K-8 institution serving more than 800 students. We are dedicated to acknowledging the learning differences of each individual child and nurturing the uniqueness of each family structure. We offer rigorous instruction directly aligned to the Common Core State Standards. One of our distinctive features is a targeted focus on reading, math and character development. Within our daily structure, we have created routine systems which allow additional instructional time in these focus areas. Additionally, we have two counselors who monitor and oversee the social and emotional needs of all students. We are committed to ensuring that students receive both the academic and personal skills needed to be college and career ready.

We believe that the key to success is establishing clear systems and routines. From arrival to dismissal, students are expected to maintain the expectations of a guiding structured environment.

Student - School Safety and Discipline

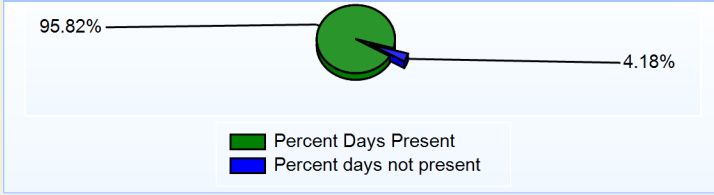
Number of Reported Offenses (2015-2016)

	<u>School</u>	<u>District</u>	<u>State</u>
School Crimes (Title 14, Delaware Code, §4112)	8	8	1612
Department of Education (DOE) Offenses	470	470	26031
All School Safety Policy in Place	Yes		

Suspensions and Expulsions

	<u>2016</u>
Number of Suspensions	358
Number of Expulsions	2
Count of Students Suspended/Expelled	162
September 30 Enrollment	792
Percent of Students Suspended/Expelled	20%
District Percentage	20%
State Percentage	13%

Percent Days Present (2015-2016)



Our Staff

Number of Instructional Staff

	<u>2016</u>
Teachers	47
Instructional Support	4
Pupil Support	10
Total	61

Staff by Race/Ethnicity

	<u>2016</u>
American Indian	0.0%
African American	45.9%
Asian American	1.6%
Hispanic	3.3%
White	49.2%

Staffing Ratios

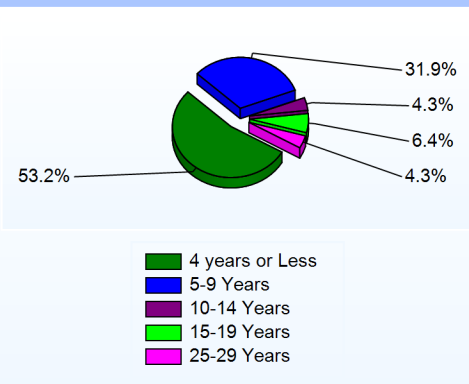
	<u>2016</u>
Students Per Teacher	17
Students Per Administrator	158
Students Per Instructional Staff	16
Students Per Pupil Support Staff	79
School Staff Per Administrator	14

Staff Qualifications

Percentage of Classes Taught by Highly Qualified Teachers (2015-2016)

	<u>Total Classes</u>	<u>% Highly Qualified</u>	<u>% Not Highly Qualified</u>
English	7	100.0%	0.0%
Reading/ Language Arts	1	0.0%	100.0%
Arts	2	50.0%	50.0%
Foreign Languages	6	100.0%	0.0%
Science	10	80.0%	20.0%
Mathematics	10	80.0%	20.0%
Social Studies	7	14.3%	85.7%
Elementary General	33	69.7%	30.3%

Years of Teaching Experience (2015-2016)



Education Level

	<u>2016</u>
Percent with Masters Degree and Above	44.3%
Percent Holding National Board for Professional Teaching Standards	2.0%

Curriculum Highlights

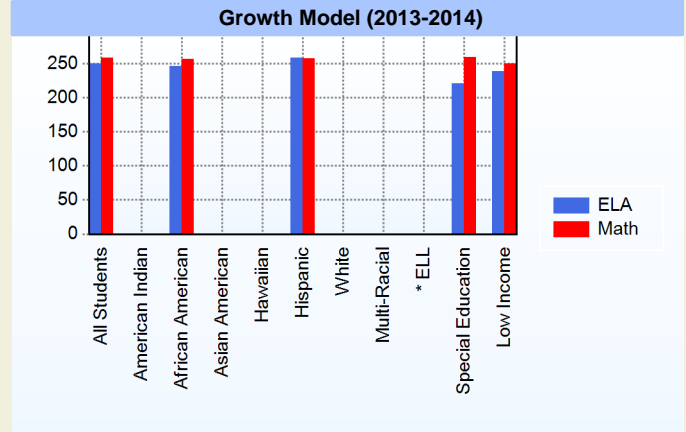
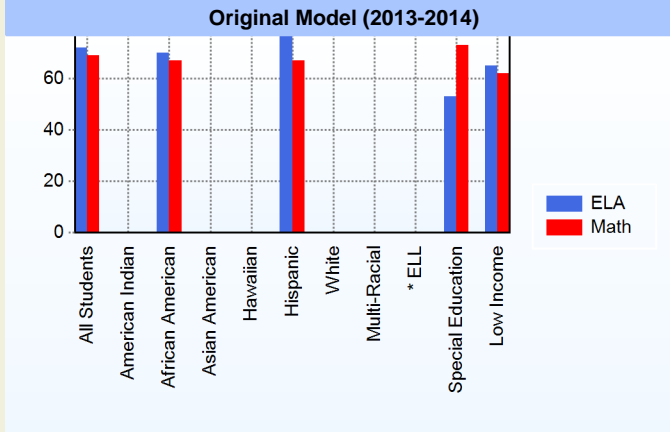
As we prepare our students for success in high school and college, we have a very student-centered curriculum that is aligned to the Common Core Standards. Our teachers use the EngageNY curriculum for grades K-5 for math and K-8 for reading. SpringBoard Math is used for grades 6-8.

We also have the following extracurricular activities:

Monarch Cheerleaders (state champions), National Elementary and Junior Honor Society, Student Council, BPA (Business Professionals of America), LeadAmerica (leadership workshop for students attended at ivy league colleges and universities), Boy Scouts, National Handwriting Champions (recognized by President Obama), Honors Programs (grades 3-8 for all subjects ELA, Math, Science, and Social Studies), Brainchild (on-line learning environment for practice and application), Character Counts (positive school climate program based on Six Pillars of character; Trustworthiness, Respect, Responsibility, Fairness, Caring, and Citizenship).

AYP

Only groups with greater than 40 students are reported



* English Language Learner

* English Language Learner

% Test Participation (2013-2014)

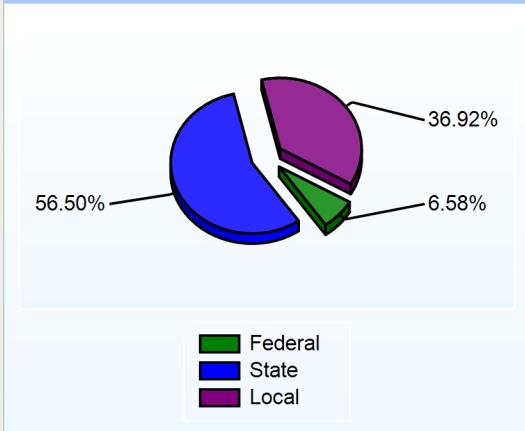
	<u>ELA</u>	<u>Math</u>	<u>ELA Goal</u>	<u>Math Goal</u>
All Students	100	100	95	95
American Indian	*	*	95	95
African American	100	100	95	95
Asian American	*	*	95	95
Hawaiian	*	*	95	95
Hispanic	97	100	95	95
White	*	*	95	95
Multi-Racial	*	*	95	95
English Language Learner	*	*	95	95
Special Education	97	100	95	95
Low Income	99	100	95	95



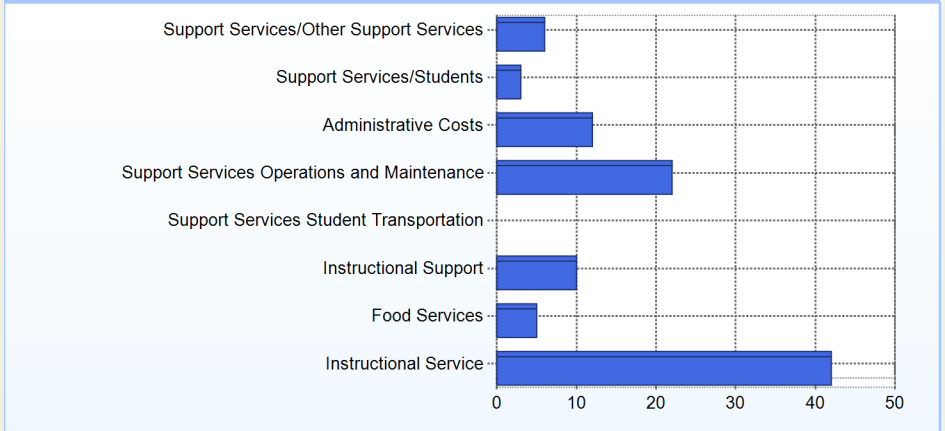
School Finances

District Expenditure per Pupil (2014-2015): \$12,069

District Sources of Revenue (2014-2015)



Percent District Allocation of Current Expenses by Category (2014-2015)

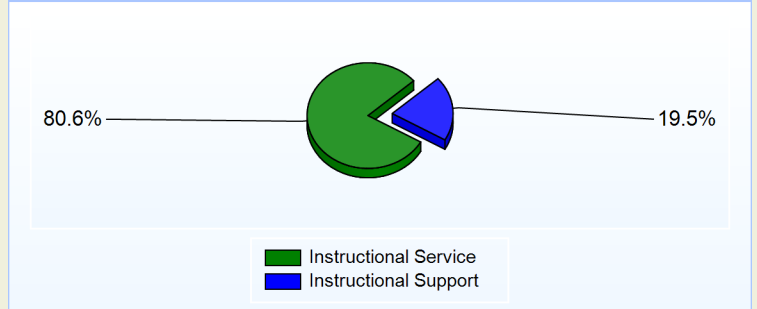


School Salary Allocation

Instructional Service	
2016	
Teachers	62.8%
Instructional Support	3.6%
Pupil Support	14.2%
Total	80.6%

Instructional Support	
2016	
Administration	12.6%
Secretaries	2.0%
Food Services	1.2%
Maintenance	3.7%
Total	19.5%

Instructional vs. Support (2015-2016)



For further information and detailed reports, visit

<http://profiles.doe.k12.de.us>

or contact your local school district office.

Glossary: <http://profiles.doe.k12.de.us/glossary.aspx>



Delaware Department of Education

John G. Townsend Building
 401 Federal Street, Suite #2
 Dover, Delaware, 19901 - 3639
 Phone: (302) 735-4000