

District: Delaware Academy of Public Safety and Security
Address: 801 North DuPont Highway, New Castle DE 19720
Principal: Herbert Sheldon
AYP: Met

Telephone: (302) 322-6050
Web: www.dapsscharterschool.org

School Demographics

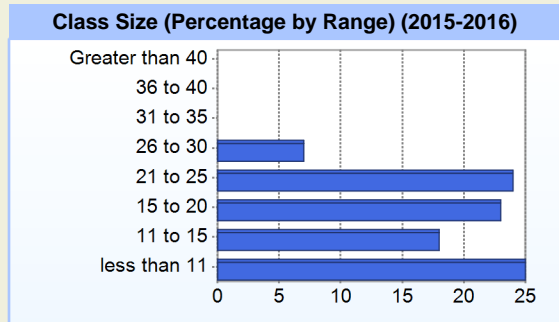
Fall Enrollment		
	2015	2016
Grade 9	105	78
Grade 10	104	71
Grade 11	75	74
Grade 12	79	80
Total	363	303

Enrollment by Race/Ethnicity		
	2015	2016
African American	29.8%	30.7%
American Indian		0.3%
Asian	3.3%	1.3%
Hawaiian	0.3%	
Hispanic/Latino	14.9%	17.5%
White	51.8%	50.2%

Other Student Characteristics		
	2015	2016
English Language Learner	3.3%	3.6%
Low Income	27.0%	32.3%
Special Education	16.5%	19.5%
Enrolled for Full Year	96.4%	N/A

Recently Arrived ELL Students	
	2016
Number of Students Not Tested on ELA Assessment	0

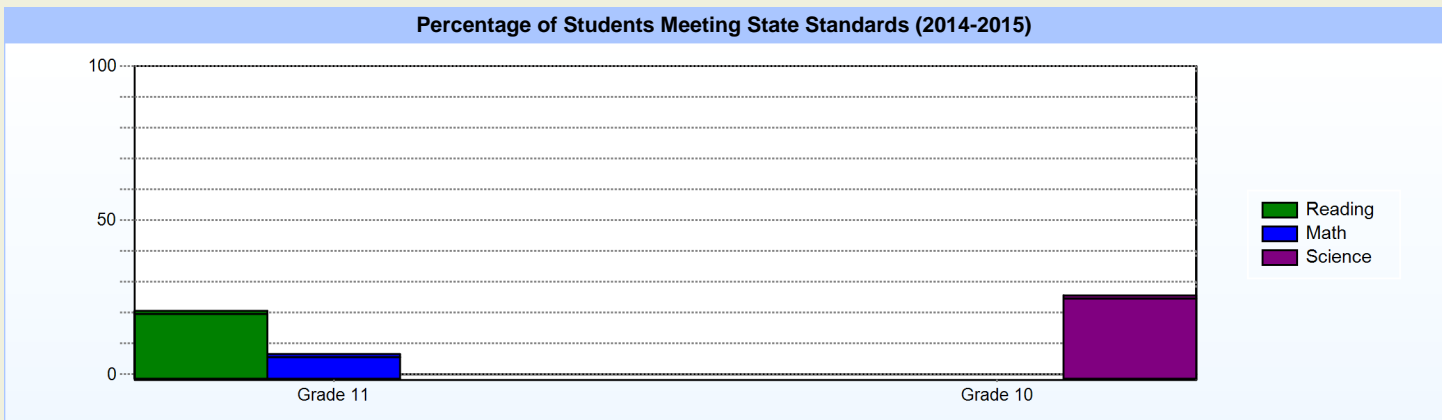
School Promotion by Grade	
	2015
Grade 9	82.9%
Grade 10	89.4%
Grade 11	96.0%
Grade 12	98.7%



Student Achievement

Advanced Placement (AP) (2014-2015)	
	2015
Advanced Placement Courses	1
No. of Students Enrolled	22
No. of Exams Taken	15
Total No. of Exams Passed	0

SAT: Average Scores for the Class of (2014-2015)			
	School	District	State
Math	414	414	449
Critical Reading	421	421	449
Writing	399	399	429
Total	1,234	1,234	1,327



Exemplary Programs

The Delaware Academy of Public Safety and Security (DAPSS) is a charter high school dedicated to providing a rigorous academic curriculum that meets State of Delaware standards as well as providing cadets practical career training in the public safety field.

As a model of excellence in the public safety field, DAPSS will strive to earn the respect of the community. DAPSS will develop disciplined and responsive individuals that will become the trusted and preferred choice of public safety organizations and/or post-secondary institutions. DAPSS graduates will exhibit the core values of fidelity to others, diligence to succeed, and scholarship in the classroom.

Student - School Safety and Discipline

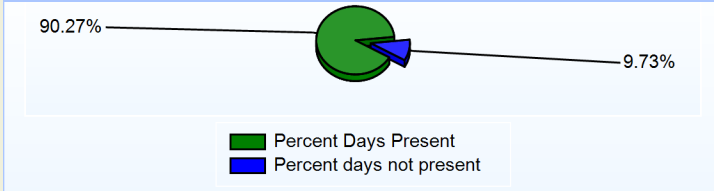
Number of Reported Offenses (2015-2016)

	<u>School</u>	<u>District</u>	<u>State</u>
School Crimes (Title 14, Delaware Code, §4112)	16	16	1612
Department of Education (DOE) Offenses	84	84	26031
All School Safety Policy in Place	N/A		

Suspensions and Expulsions

	<u>2016</u>
Number of Suspensions	171
Number of Expulsions	3
Count of Students Suspended/Expelled	87
September 30 Enrollment	303
Percent of Students Suspended/Expelled	29%
District Percentage	29%
State Percentage	13%

Percent Days Present (2015-2016)



Our Staff

Number of Instructional Staff

	<u>2016</u>
Teachers	27
Instructional Support	4
Pupil Support	2
Total	33

Staff by Race/Ethnicity

	<u>2016</u>
American Indian	0.0%
African American	18.2%
Asian American	0.0%
Hispanic	6.1%
White	75.8%

Staffing Ratios

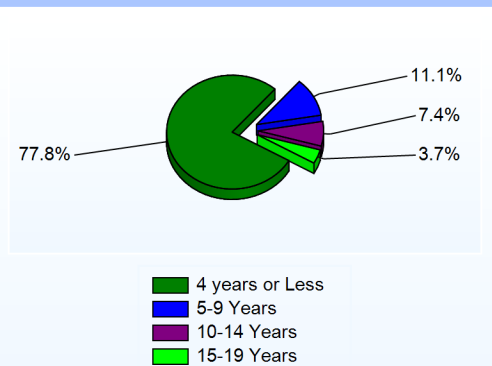
	<u>2016</u>
Students Per Teacher	11
Students Per Administrator	303
Students Per Instructional Staff	10
Students Per Pupil Support Staff	152
School Staff Per Administrator	43

Staff Qualifications

Percentage of Classes Taught by Highly Qualified Teachers (2015-2016)

	<u>Total Classes</u>	<u>% Highly Qualified</u>	<u>% Not Highly Qualified</u>
English	17	94.1%	5.9%
Arts	1	0.0%	100.0%
Foreign Languages	11	100.0%	0.0%
Science	17	94.1%	5.9%
Mathematics	18	100.0%	0.0%
Geography	4	100.0%	0.0%
Civics & Government	4	50.0%	50.0%
History	8	50.0%	50.0%

Years of Teaching Experience (2015-2016)



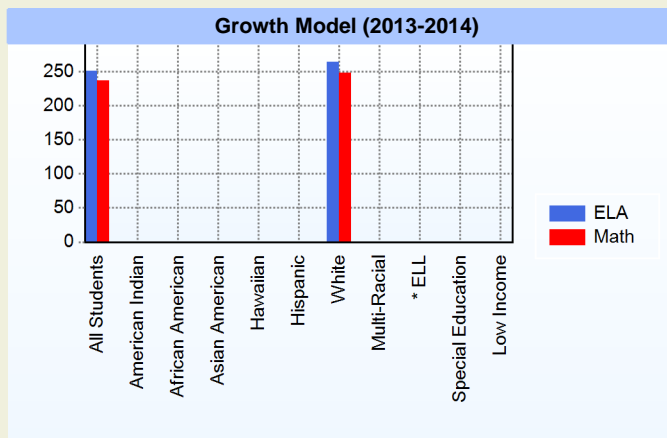
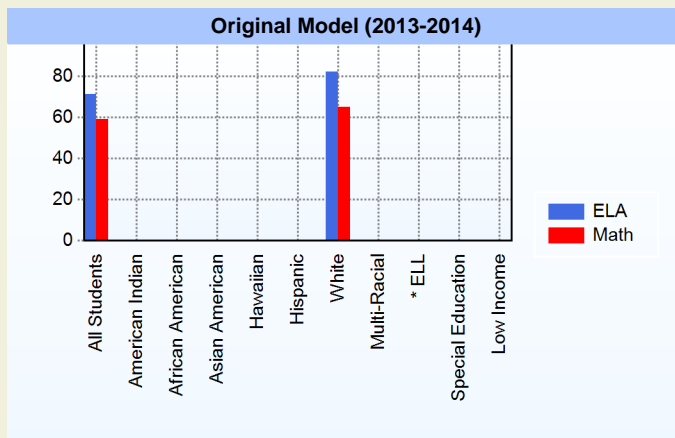
Education Level

	<u>2016</u>
Percent with Masters Degree and Above	75.8%
Percent Holding National Board for Professional Teaching Standards	0.0%

Graduation Rate - ESEA 4 Year Adjusted		
	2014	2015
	ESEA	ESEA
All Students	0.0%	76.9%
African American	0.0%	66.7%
Asian American		100.0%
Hawaiian		100.0%
Hispanic		75.0%
White	0.0%	78.6%
English Language Learner		33.3%
Special Education	0.0%	61.5%
Low Income	0.0%	69.6%

AYP

Only groups with greater than 40 students are reported



* English Language Learner

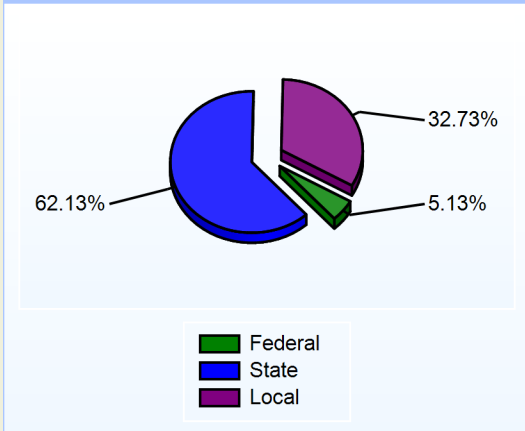
* English Language Learner

% Test Participation (2013-2014)				
	ELA	Math	ELA Goal	Math Goal
All Students	100	100	95	95
American Indian	*	*	95	95
African American	*	*	95	95
Asian American	*	*	95	95
Hawaiian	*	*	95	95
Hispanic	*	*	95	95
White	100	100	95	95
Multi-Racial	*	*	95	95
English Language Learner	*	*	95	95
Special Education	*	*	95	95
Low Income	*	*	95	95

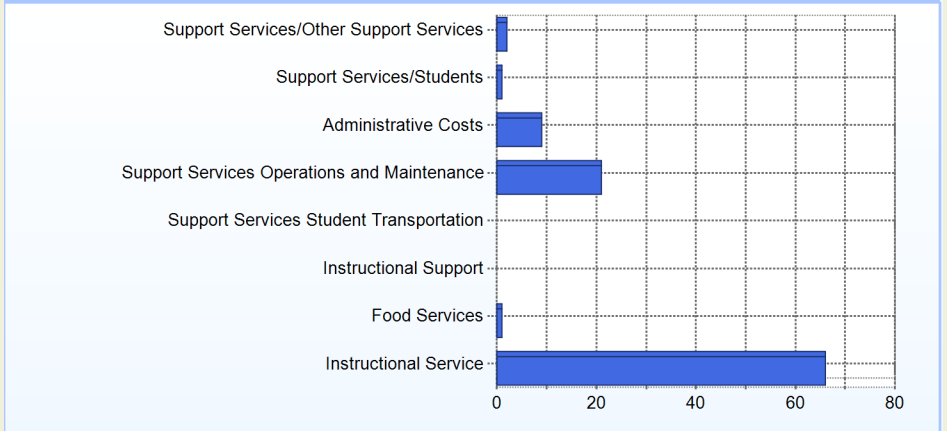
School Finances

District Expenditure per Pupil (2014-2015): \$12,826

District Sources of Revenue (2014-2015)



Percent District Allocation of Current Expenses by Category (2014-2015)

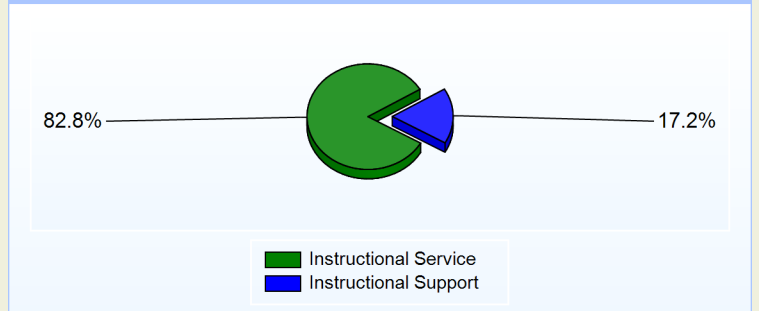


School Salary Allocation

Instructional Service	
2016	
Teachers	70.6%
Instructional Support	7.4%
Pupil Support	4.8%
Total	82.8%

Instructional Support	
2016	
Administration	3.9%
Secretaries	8.6%
Food Services	2.3%
Maintenance	2.4%
Total	17.2%

Instructional vs. Support (2015-2016)



For further information and detailed reports, visit

<http://profiles.doe.k12.de.us>

or contact your local school district office.

Glossary: <http://profiles.doe.k12.de.us/glossary.aspx>



Delaware Department of Education

John G. Townsend Building
 401 Federal Street, Suite #2
 Dover, Delaware, 19901 - 3639
 Phone: (302) 735-4000