

**District:** Las Americas Aspira Academy  
**Address:** 326 Ruthar Drive, Newark DE 19711  
**Principal:** Margaret Lopez-Waite  
**AYP:** Met

**Telephone:** (302) 292-1463  
**Web:** www.aspiracademy.org/

**School Demographics**

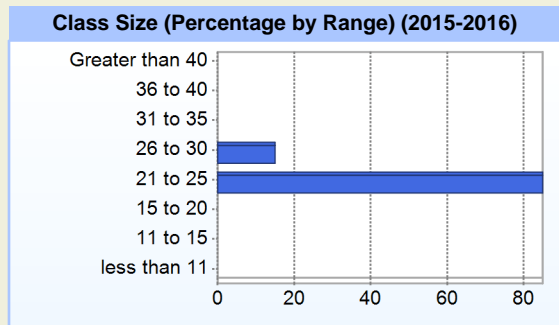
Fall Enrollment		
	2015	2016
Kindergarten	90	100
Grade 1	98	100
Grade 2	50	100
Grade 3	91	50
Grade 4	48	100
Grade 5	48	48
Grade 6	50	51
Grade 7	41	50
Grade 8	25	40
Total	541	639

Enrollment by Race/Ethnicity		
	2015	2016
African American	15.0%	13.9%
American Indian	0.2%	0.2%
Asian	2.8%	2.0%
Hawaiian	0.2%	0.2%
Hispanic/Latino	57.3%	56.7%
White	23.8%	26.1%
Multi-Racial	0.7%	0.9%

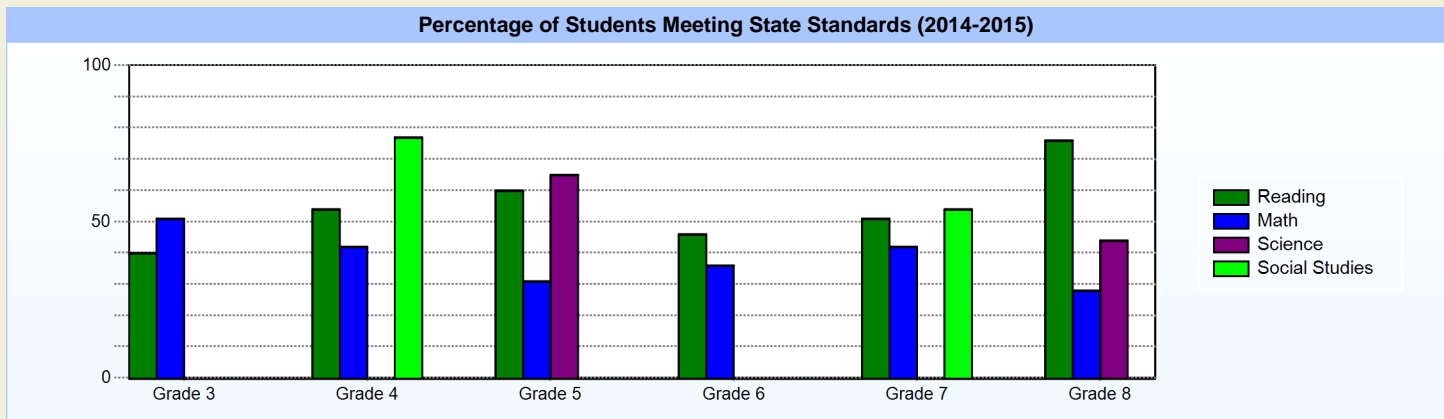
Other Student Characteristics		
	2015	2016
English Language Learner	30.3%	26.0%
Low Income	25.0%	28.3%
Special Education	5.7%	8.5%
Enrolled for Full Year	98.7%	N/A

School Promotion by Grade	
	2015
Kindergarten	100.0%
Grade 1	95.9%
Grade 2	100.0%
Grade 3	98.9%
Grade 4	100.0%
Grade 5	100.0%
Grade 6	100.0%
Grade 7	100.0%
Grade 8	100.0%

Recently Arrived ELL Students	
	2016
Number of Students Not Tested on ELA Assessment	0



**Student Achievement**



**Exemplary Programs**

The mission of Las Américas ASPIRA Academy is to provide a world-class education that prepares students through a dual language, project-based learning curriculum, to become healthy productive community members and leaders, with an expectation that every child, regardless of race, gender, ethnicity, or socio-economic level, is college-bound.

We are accomplishing this mission through the full implementation of a dual language immersion, project-based learning curriculum. Our guiding principles – Accountability \* Social Intelligence \* Positive Mindset \* Inquiry \* Resilience \* Appreciation (ASPIRA) – represent the foundation of our character education program. These traits are an integral part of our school-wide implementation of the Responsive Classroom Approach which embraces a fostering of community, based upon teaching socially-responsible behaviors.

**Student - School Safety and Discipline**

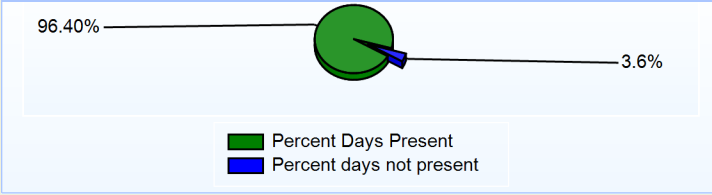
**Number of Reported Offenses (2015-2016)**

	<u>School</u>	<u>District</u>	<u>State</u>
School Crimes (Title 14, Delaware Code, §4112)	0	0	1612
Department of Education (DOE) Offenses	74	74	26031
All School Safety Policy in Place	N/A		

**Suspensions and Expulsions**

	<u>2016</u>
Number of Suspensions	73
Number of Expulsions	0
Count of Students Suspended/Expelled	46
September 30 Enrollment	639
Percent of Students Suspended/Expelled	7%
District Percentage	7%
State Percentage	13%

**Percent Days Present (2015-2016)**



**Our Staff**

**Number of Instructional Staff**

	<u>2016</u>
Teachers	46
Instructional Support	11
Pupil Support	2
Total	59

**Staff by Race/Ethnicity**

	<u>2016</u>
American Indian	0.0%
African American	10.2%
Asian American	3.4%
Hispanic	25.4%
White	61.0%

**Staffing Ratios**

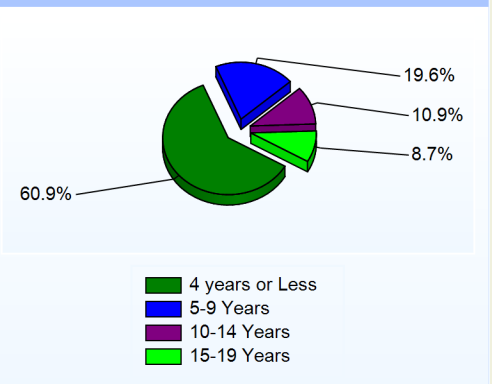
	<u>2016</u>
Students Per Teacher	14
Students Per Administrator	160
Students Per Instructional Staff	11
Students Per Pupil Support Staff	320
School Staff Per Administrator	17

**Staff Qualifications**

**Percentage of Classes Taught by Highly Qualified Teachers (2015-2016)**

	<u>Total Classes</u>	<u>% Highly Qualified</u>	<u>% Not Highly Qualified</u>
Reading/ Language Arts	4	100.0%	0.0%
Arts	12	100.0%	0.0%
Foreign Languages	11	100.0%	0.0%
Science	6	100.0%	0.0%
Mathematics	6	100.0%	0.0%
Social Studies	6	100.0%	0.0%
Elementary General	18	88.9%	11.1%

**Years of Teaching Experience (2015-2016)**

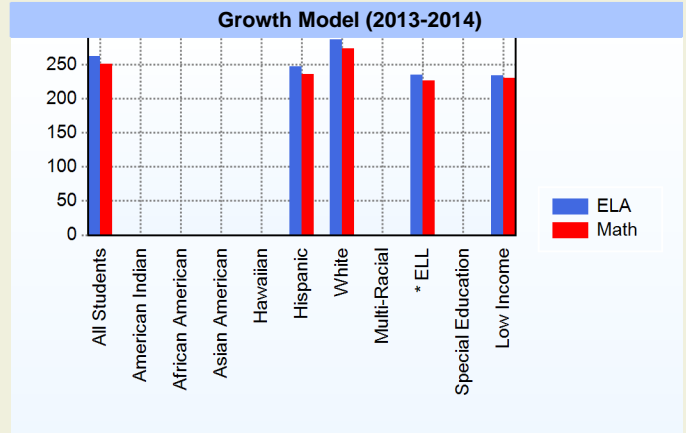
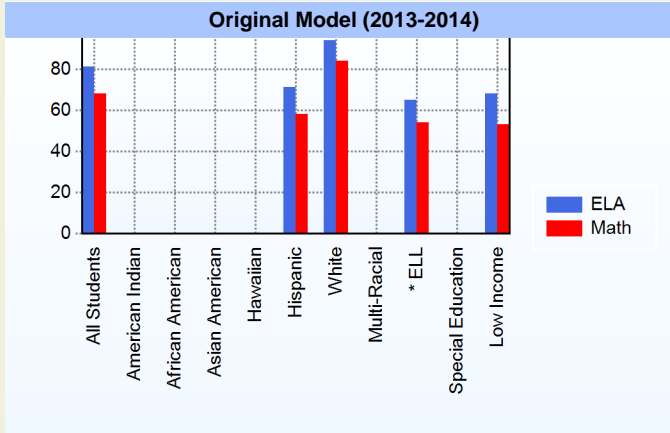


**Education Level**

	<u>2016</u>
Percent with Masters Degree and Above	44.1%
Percent Holding National Board for Professional Teaching Standards	0.0%

AYP

Only groups with greater than 40 students are reported



\* English Language Learner

\* English Language Learner

% Test Participation (2013-2014)

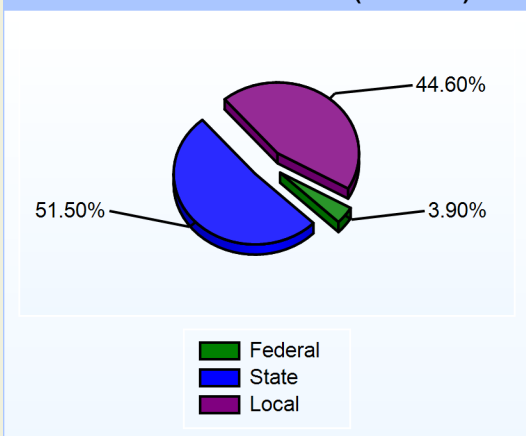
	ELA	Math	ELA Goal	Math Goal
All Students	100	100	95	95
American Indian	*	*	95	95
African American	*	*	95	95
Asian American	*	*	95	95
Hawaiian	*	*	95	95
Hispanic	99	100	95	95
White	100	100	95	95
Multi-Racial	*	*	95	95
English Language Learner	98	100	95	95
Special Education	*	*	95	95
Low Income	100	100	95	95



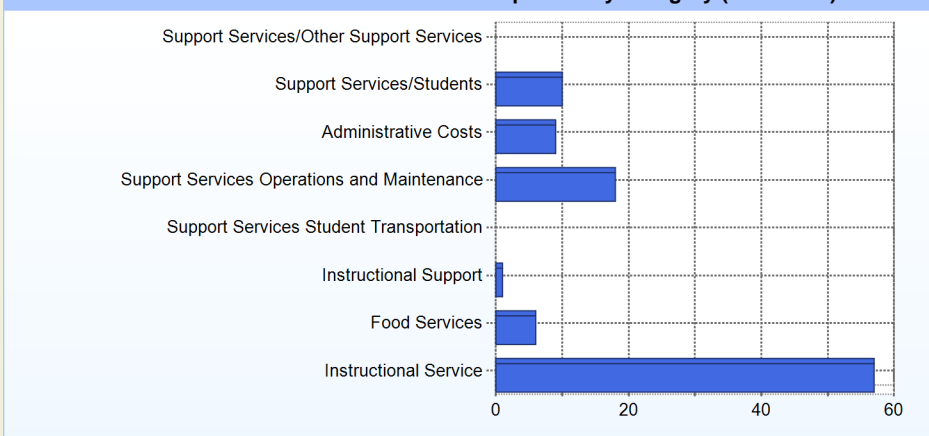
**School Finances**

District Expenditure per Pupil (2014-2015): \$11,498

**District Sources of Revenue (2014-2015)**



**Percent District Allocation of Current Expenses by Category (2014-2015)**



**School Salary Allocation**

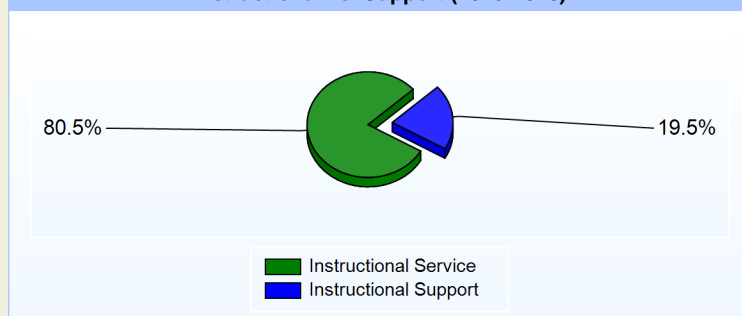
**Instructional Service**

	<u>2016</u>
Teachers	66.4%
Instructional Support	10.2%
Pupil Support	3.9%
Total	80.5%

**Instructional Support**

	<u>2016</u>
Administration	11.2%
Secretaries	3.7%
Food Services	2.7%
Maintenance	1.9%
Total	19.5%

**Instructional vs. Support (2015-2016)**



**For further information and detailed reports, visit**

**<http://profiles.doe.k12.de.us>**

**or contact your local school district office.**

**Glossary:** <http://profiles.doe.k12.de.us/glossary.aspx>



**Delaware Department of Education**

John G. Townsend Building  
 401 Federal Street, Suite #2  
 Dover, Delaware, 19901 - 3639  
 Phone: (302) 735-4000