

**District:** Academy of Dover Charter School  
**Address:** 104 Saulsbury Road, Dover DE 19904  
**Principal:** Cheri Marshall  
**AYP:** Met

**Telephone:** (302) 674-0684  
**Web:** www.aodcharter.org

**School Demographics**

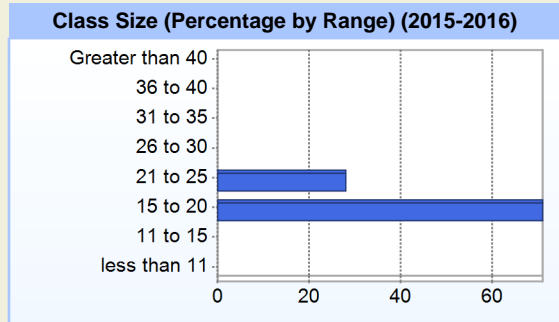
Fall Enrollment		
	2015	2016
Kindergarten	62	55
Grade 1	52	56
Grade 2	59	47
Grade 3	49	50
Grade 4	37	39
Grade 5	31	37
Total	290	284

Enrollment by Race/Ethnicity		
	2015	2016
African American	81.0%	78.2%
Asian	0.7%	1.1%
Hawaiian	0.3%	0.4%
Hispanic/Latino	9.0%	11.3%
White	9.0%	9.2%

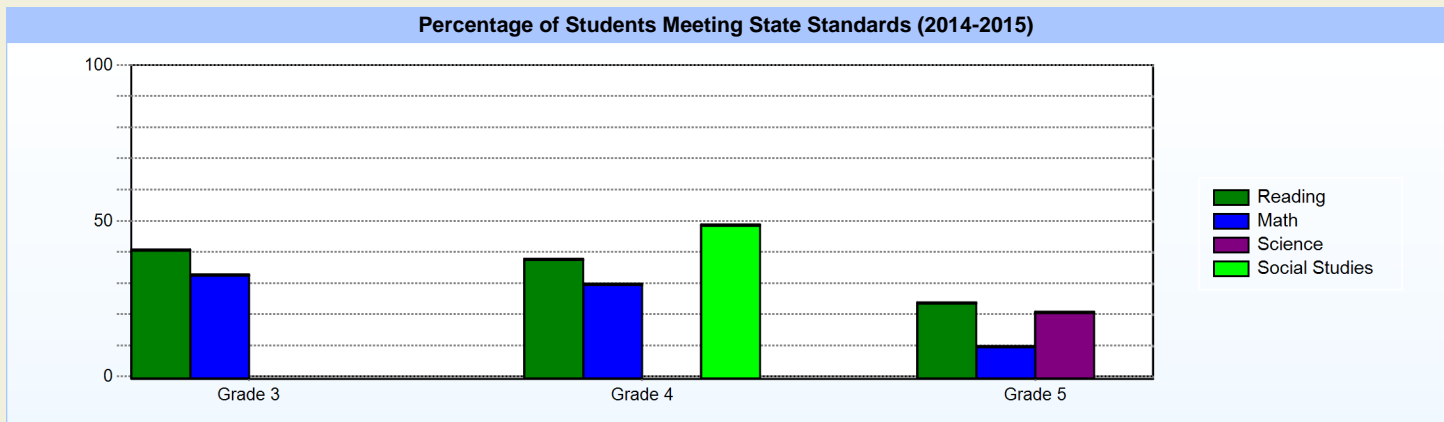
Other Student Characteristics		
	2015	2016
English Language Learner	1.4%	1.8%
Low Income	64.8%	65.8%
Special Education	11.7%	9.5%
Enrolled for Full Year	96.2%	N/A

Recently Arrived ELL Students	
	2016
Number of Students Not Tested on ELA Assessment	0

School Promotion by Grade	
	2015
Kindergarten	91.9%
Grade 1	94.2%
Grade 2	93.2%
Grade 3	93.9%
Grade 4	100.0%
Grade 5	83.9%



**Student Achievement**



**Exemplary Programs**

The Academy of Dover offers extended academic learning time with a 200 day school year. AOD also has an elementary chorus and marching band. All students participate in Technology, Music, Art and Physical Education throughout the school year.

**Student - School Safety and Discipline**

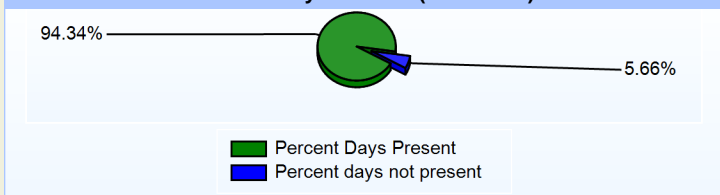
**Number of Reported Offenses (2015-2016)**

	<u>School</u>	<u>District</u>	<u>State</u>
School Crimes (Title 14, Delaware Code, §4112)	0	0	1612
Department of Education (DOE) Offenses	14	14	26031
All School Safety Policy in Place	Yes		

**Suspensions and Expulsions**

	<u>2016</u>
Number of Suspensions	148
Number of Expulsions	0
Count of Students Suspended/Expelled	66
September 30 Enrollment	284
Percent of Students Suspended/Expelled	23%
District Percentage	23%
State Percentage	13%

**Percent Days Present (2015-2016)**



**Our Staff**

<b>Number of Instructional Staff</b>	
	<u>2016</u>
Teachers	22
Instructional Support	8
Pupil Support	1
Total	31

<b>Staff by Race/Ethnicity</b>	
	<u>2016</u>
American Indian	0.0%
African American	35.5%
Asian American	0.0%
Hispanic	6.5%
White	58.1%

<b>Staffing Ratios</b>	
	<u>2016</u>
Students Per Teacher	13
Students Per Administrator	142
Students Per Instructional Staff	10
Students Per Pupil Support Staff	284
School Staff Per Administrator	19

**Staff Qualifications**

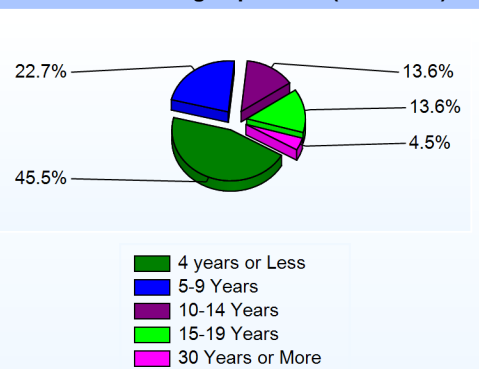
**Percentage of Classes Taught by Highly Qualified Teachers (2015-2016)**

	<u>Total Classes</u>	<u>% Highly Qualified</u>	<u>% Not Highly Qualified</u>
Arts	2	100.0%	0.0%
Elementary General	14	100.0%	0.0%

**Education Level**

	<u>2016</u>
Percent with Masters Degree and Above	45.2%
Percent Holding National Board for Professional Teaching Standards	0.0%

**Years of Teaching Experience (2015-2016)**



**Curriculum Highlights**

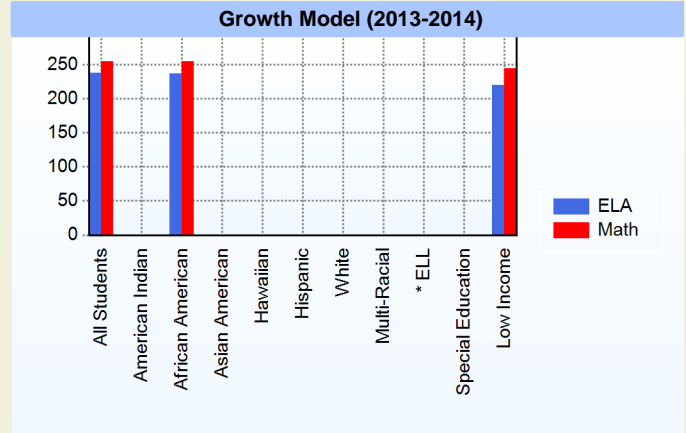
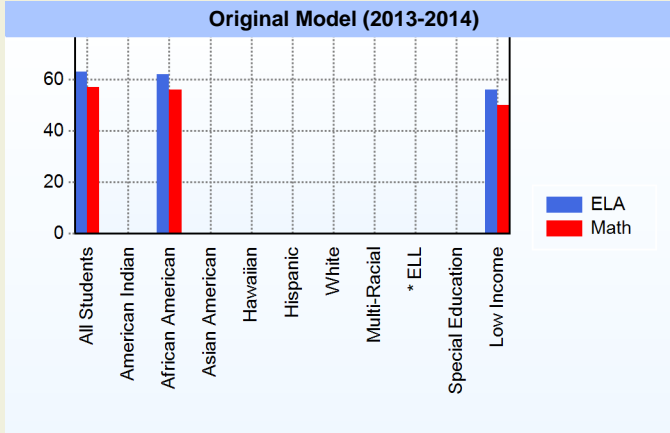
We have implemented a reduction in student/teacher ratio in each classroom during the language arts block by utilizing related art teachers in the classrooms during that time to assist with small group instruction.

AOD provides rigorous instruction aligned to the Common Core Standards. Teachers use meaningful assessments which gauge student progress and provide actionable information.

Writing is used in ALL content areas.

**AYP**

Only groups with greater than 40 students are reported



\* English Language Learner

\* English Language Learner

**% Test Participation (2013-2014)**

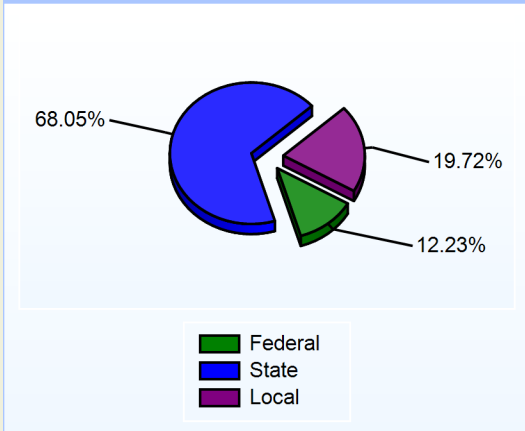
	<u>ELA</u>	<u>Math</u>	<u>ELA Goal</u>	<u>Math Goal</u>
All Students	99	100	95	95
American Indian	*	*	95	95
African American	99	100	95	95
Asian American	*	*	95	95
Hawaiian	*	*	95	95
Hispanic	*	*	95	95
White	*	*	95	95
Multi-Racial	*	*	95	95
English Language Learner	*	*	95	95
Special Education	*	*	95	95
Low Income	100	100	95	95



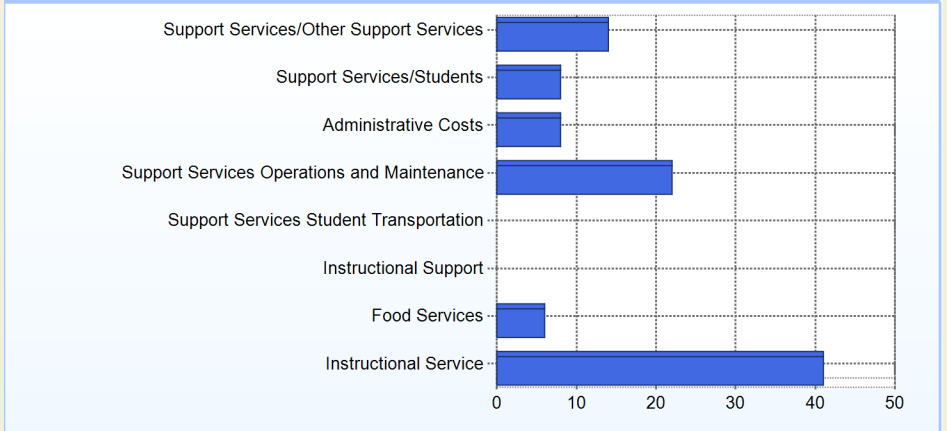
**School Finances**

District Expenditure per Pupil (2014-2015): \$13,528

**District Sources of Revenue (2014-2015)**



**Percent District Allocation of Current Expenses by Category (2014-2015)**

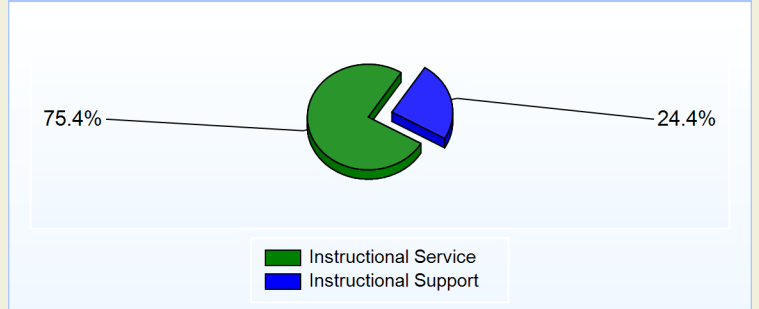


**School Salary Allocation**

Instructional Service	
2016	
Teachers	58.1%
Instructional Support	13.6%
Pupil Support	3.7%
Total	75.4%

Instructional Support	
2016	
Administration	12.6%
Secretaries	5.2%
Food Services	4.4%
Maintenance	2.2%
Total	24.4%

**Instructional vs. Support (2015-2016)**



**For further information and detailed reports, visit**

**<http://profiles.doe.k12.de.us>**

**or contact your local school district office.**

**Glossary:** <http://profiles.doe.k12.de.us/glossary.aspx>



**Delaware Department of Education**

John G. Townsend Building  
 401 Federal Street, Suite #2  
 Dover, Delaware, 19901 - 3639  
 Phone: (302) 735-4000