

**District:** Reach Academy for Girls  
**Address:** 170 Lukens Drive, New Castle DE 19720  
**Principal:** Tara Allen  
**AYP:** Met

**Telephone:** (302) 654-3720  
**Web:** www.reachacademyforgirls.org/

**School Demographics**

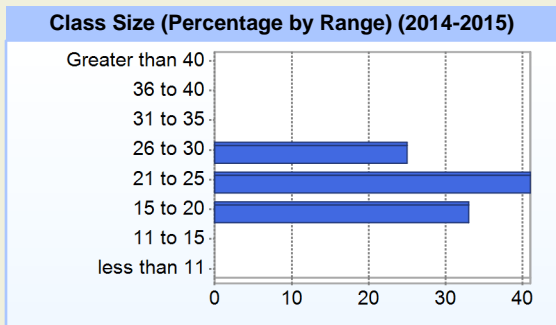
Fall Enrollment		
	2014	2015
Kindergarten	73	31
Grade 1	62	40
Grade 2	60	41
Grade 3	59	52
Grade 4	52	49
Grade 5	25	46
Grade 6	45	42
Grade 7	50	35
Grade 8	42	41
Total	468	377

Enrollment by Race/Ethnicity		
	2014	2015
African American	80.8%	82.0%
American Indian	0.9%	0.8%
Asian	1.1%	1.1%
Hawaiian		1.3%
Hispanic/Latino	5.6%	5.0%
White	11.8%	8.5%
Multi-Racial		1.3%

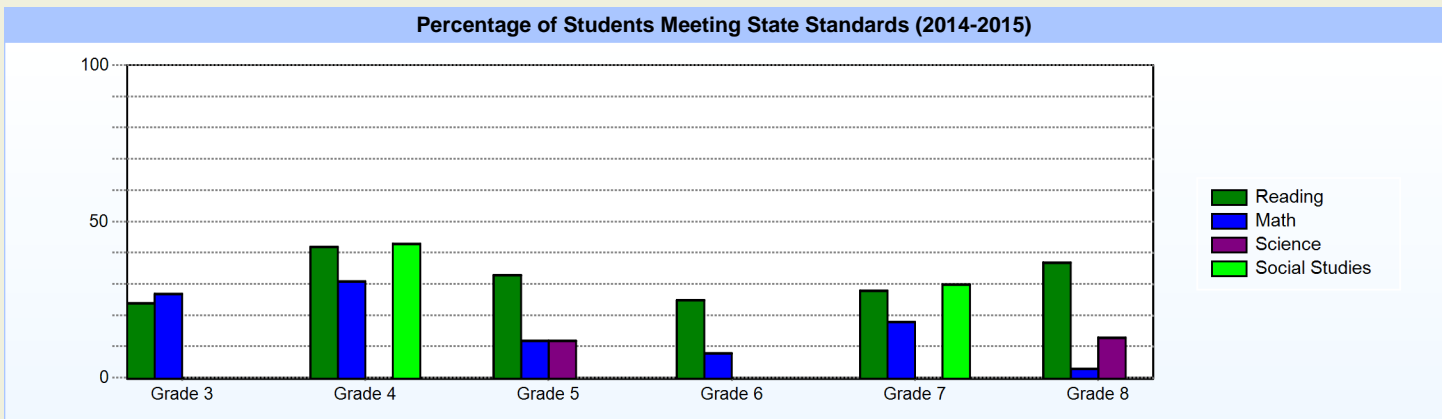
Other Student Characteristics		
	2014	2015
English Language Learner	1.1%	1.6%
Low Income	59.0%	55.2%
Special Education	5.3%	6.4%
Enrolled for Full Year	100.0%	N/A

School Promotion by Grade	
	2014
Kindergarten	98.6%
Grade 1	96.8%
Grade 2	100.0%
Grade 3	98.3%
Grade 4	100.0%
Grade 5	96.0%
Grade 6	93.3%
Grade 7	100.0%
Grade 8	97.6%

Recently Arrived ELL Students	
	2015
Number of Students Not Tested on ELA Assessment	0



**Student Achievement**



**Student - School Safety and Discipline**

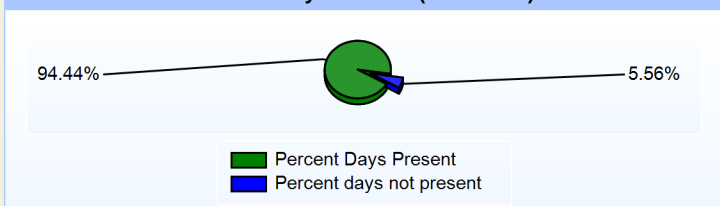
**Number of Reported Offenses (2014-2015)**

	<u>School</u>	<u>District</u>	<u>State</u>
School Crimes (Title 14, Delaware Code, §4112)	0	0	678
Department of Education (DOE) Offenses	32	32	10432
All School Safety Policy in Place	N/A		

**Suspensions and Expulsions**

	<u>2015</u>
Number of Suspensions	56
Number of Expulsions	2
Count of Students Suspended/Expelled	37
September 30 Enrollment	377
Percent of Students Suspended/Expelled	10%
District Percentage	10%
State Percentage	12%

**Percent Days Present (2014-2015)**



**Our Staff**

**Number of Instructional Staff**

	<u>2015</u>
Teachers	26
Instructional Support	1
Total	27

**Staff by Race/Ethnicity**

	<u>2015</u>
American Indian	0.0%
African American	25.9%
Asian American	3.7%
Hispanic	3.7%
White	66.7%

**Staffing Ratios**

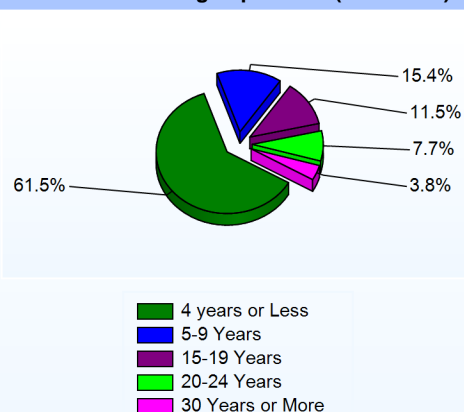
	<u>2015</u>
Students Per Teacher	15
Students Per Administrator	189
Students Per Instructional Staff	14
Students Per Pupil Support Staff	0
School Staff Per Administrator	16

**Staff Qualifications**

**Percentage of Classes Taught by Highly Qualified Teachers (2014-2015)**

	<u>Total Classes</u>	<u>% Highly Qualified</u>	<u>% Not Highly Qualified</u>
Reading/ Language Arts	12	0.0%	100.0%
Arts	10	50.0%	50.0%
Foreign Languages	5	100.0%	0.0%
Science	6	0.0%	100.0%
Mathematics	6	100.0%	0.0%
Social Studies	6	100.0%	0.0%
Elementary General	11	54.5%	45.5%

**Years of Teaching Experience (2014-2015)**

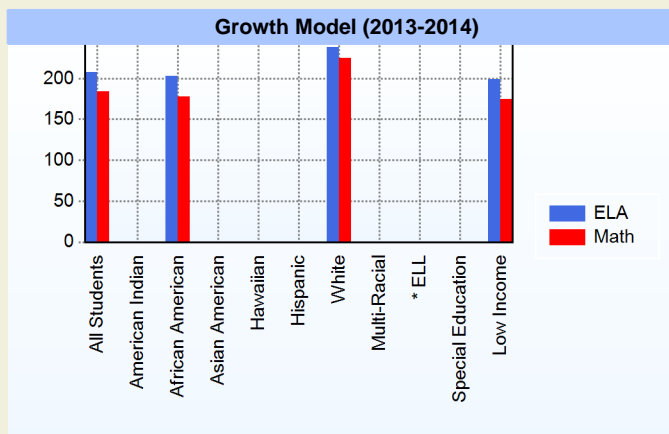
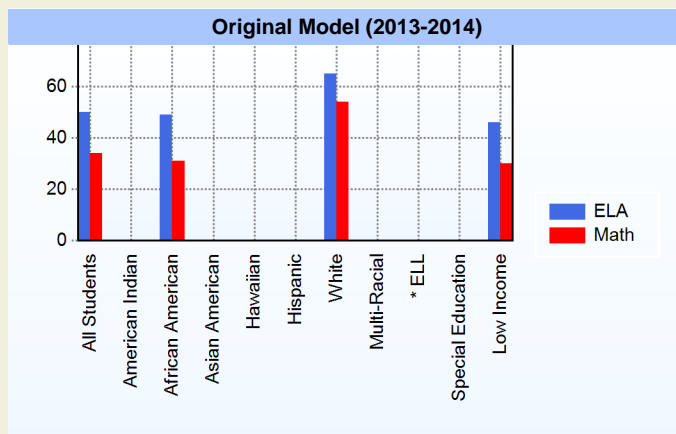


**Education Level**

	<u>2015</u>
Percent with Masters Degree and Above	33.3%
Percent Holding National Board for Professional Teaching Standards	0.0%

AYP

Only groups with greater than 40 students are reported



\* English Language Learner

\* English Language Learner

% Test Participation (2013-2014)

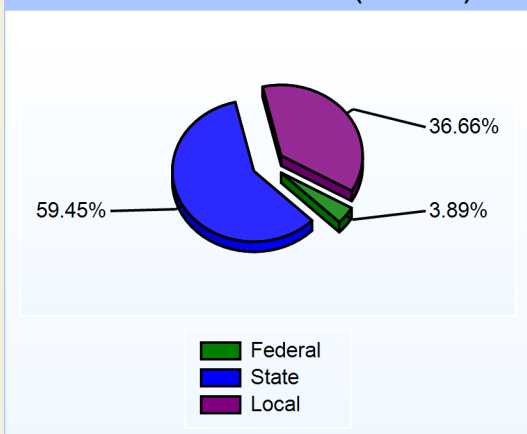
	ELA	Math	ELA Goal	Math Goal
All Students	100	100	95	95
American Indian	*	*	95	95
African American	100	100	95	95
Asian American	*	*	95	95
Hawaiian	*	*	95	95
Hispanic	*	*	95	95
White	100	100	95	95
Multi-Racial	*	*	95	95
English Language Learner	*	*	95	95
Special Education	*	*	95	95
Low Income	100	100	95	95



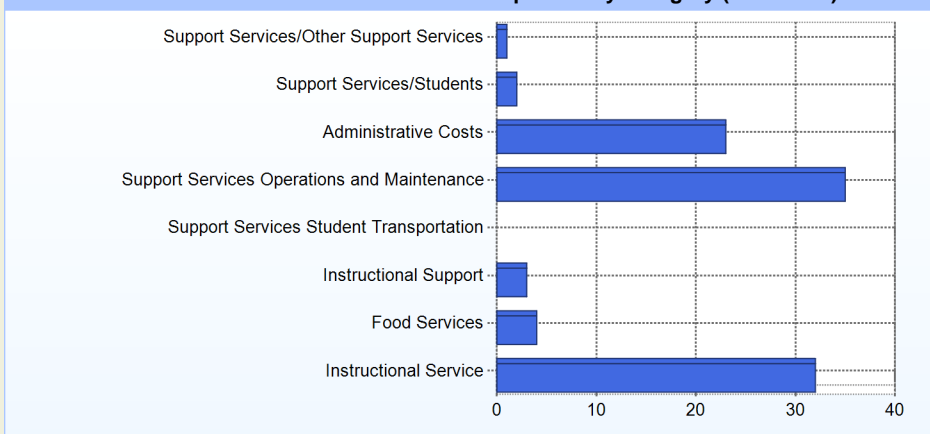
**School Finances**

District Expenditure per Pupil (2013-2014): \$11,920

**District Sources of Revenue (2013-2014)**



**Percent District Allocation of Current Expenses by Category (2013-2014)**



**School Salary Allocation**

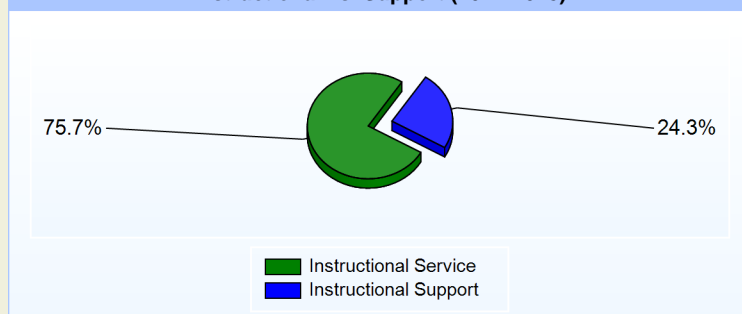
**Instructional Service**

	2015
Teachers	74.2%
Instructional Support	1.5%
Total	75.7%

**Instructional Support**

	2015
Administration	10.7%
Secretaries	12.9%
Food Services	0.7%
Total	24.3%

**Instructional vs. Support (2014-2015)**



**For further information and detailed reports, visit**

**<http://profiles.doe.k12.de.us>**

**or contact your local school district office.**

**Glossary:** <http://profiles.doe.k12.de.us/glossary.aspx>



**Delaware Department of Education**

John G. Townsend Building  
 401 Federal Street, Suite #2  
 Dover, Delaware, 19901 - 3639  
 Phone: (302) 735-4000