

District: Moyer (Maurice J.) Academy
Address: 610 East 17th Street, Wilmington DE 19802
Principal: Keenan Dorsey
AYP: Not Met

Telephone: (302) 428-9501
Web: www.mauricejmoyeracademicinstitute.org

School Demographics

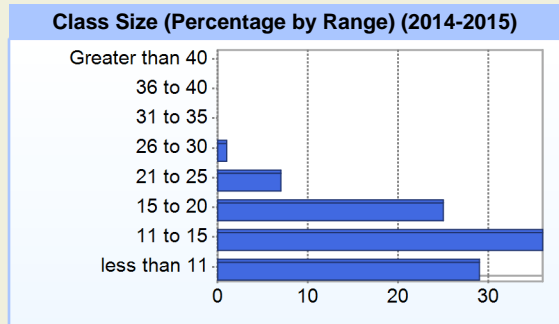
Fall Enrollment		
	2014	2015
Grade 6	34	20
Grade 7	33	24
Grade 8	29	26
Grade 9	62	53
Grade 10	41	42
Grade 11	13	31
Grade 12	15	12
Total	227	208

Enrollment by Race/Ethnicity		
	2014	2015
African American	88.5%	89.9%
American Indian	0.4%	
Asian	0.4%	
Hispanic/Latino	7.5%	5.8%
White	2.2%	3.4%
Multi-Racial	0.9%	1.0%

Other Student Characteristics		
	2014	2015
English Language Learner	2.2%	2.4%
Low Income	78.4%	73.1%
Special Education	31.3%	29.8%
Enrolled for Full Year	100.0%	N/A

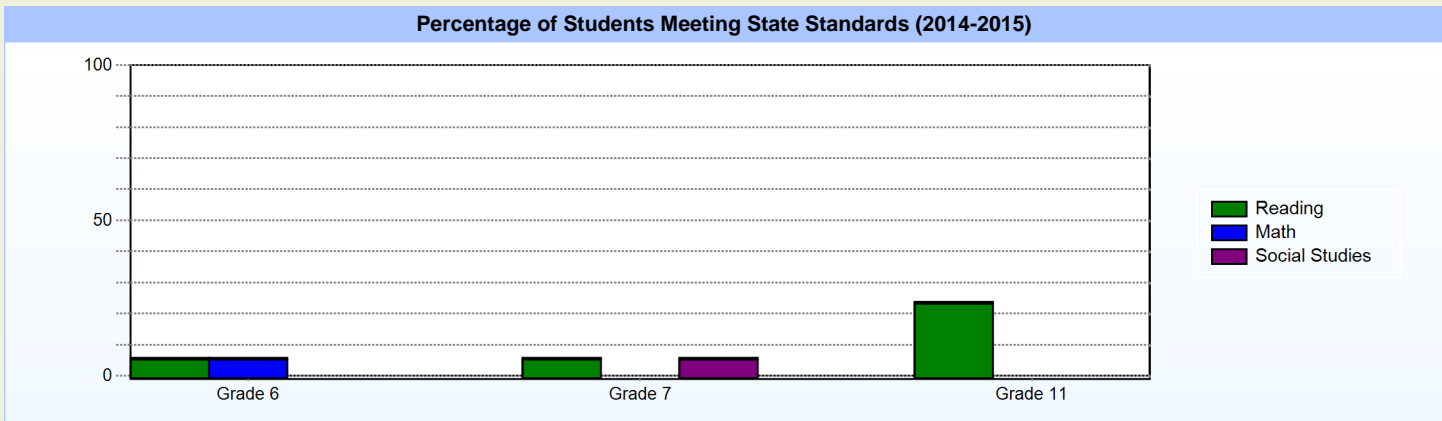
School Promotion by Grade	
	2014
Grade 6	97.1%
Grade 7	97.0%
Grade 8	96.6%
Grade 9	72.6%
Grade 10	90.2%
Grade 11	69.2%
Grade 12	80.0%

Recently Arrived ELL Students	
	2015
Number of Students Not Tested on ELA Assessment	0



Student Achievement

SAT: Average Scores for the Class of (2013-2014)				
	School	District	State	National
Math	338	338	438	513
Critical Reading	339	339	430	497
Writing	323	323	423	487
Total	1,000	1,000	1,291	1,497



Exemplary Programs

Moyer Academy continues to grow its academic and extracurricular programs. We have our National Honor Society (HS/MS), College Opportunities (college assistance programs) Student Assistant Program and Success Program (for older students). Moyer Academy has partnered with Del-Tech College, where students who qualify will be able to take college courses during their 11th and 12th grade years with financial assistance from Moyer Academy. We direct students to Del-State University's Early Bird Program. We are partnering with local medical service provider for career pathway opportunities.

Student - School Safety and Discipline

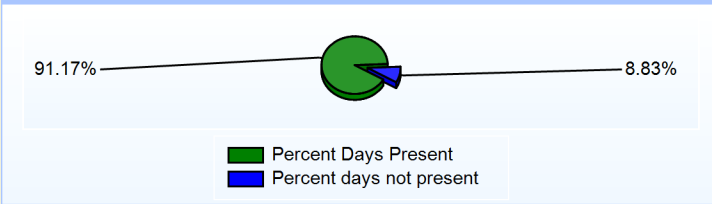
Number of Reported Offenses (2014-2015)

	<u>School</u>	<u>District</u>	<u>State</u>
School Crimes (Title 14, Delaware Code, §4112)	0	0	678
Department of Education (DOE) Offenses	63	63	10432
All School Safety Policy in Place	Yes		

Suspensions and Expulsions

	<u>2015</u>
Number of Suspensions	237
Number of Expulsions	0
Count of Students Suspended/Expelled	95
September 30 Enrollment	208
Percent of Students Suspended/Expelled	46%
District Percentage	46%
State Percentage	12%

Percent Days Present (2014-2015)



Our Staff

Number of Instructional Staff

	<u>2015</u>
Teachers	16
Instructional Support	5
Pupil Support	10
Total	31

Staff by Race/Ethnicity

	<u>2015</u>
American Indian	0.0%
African American	62.5%
Asian American	0.0%
Hispanic	0.0%
White	37.5%

Staffing Ratios

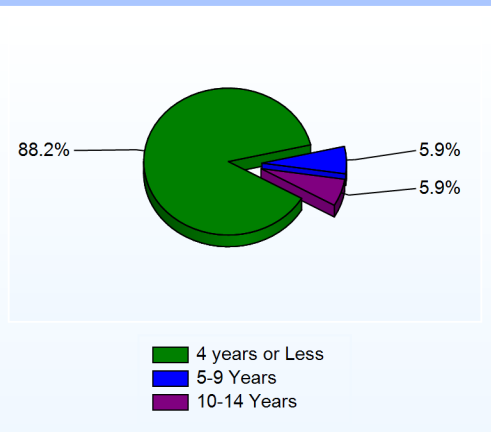
	<u>2015</u>
Students Per Teacher	13
Students Per Administrator	42
Students Per Instructional Staff	10
Students Per Pupil Support Staff	21
School Staff Per Administrator	8

Staff Qualifications

Percentage of Classes Taught by Highly Qualified Teachers (2014-2015)

	<u>Total Classes</u>	<u>% Highly Qualified</u>	<u>% Not Highly Qualified</u>
English	14	50.0%	50.0%
Reading/ Language Arts	1	0.0%	100.0%
Arts	4	0.0%	100.0%
Science	8	62.5%	37.5%
Mathematics	18	38.9%	61.1%
Social Studies	6	83.3%	16.7%
History	7	0.0%	100.0%
Elementary General	3	33.3%	66.7%

Years of Teaching Experience (2014-2015)



Education Level

	<u>2015</u>
Percent with Masters Degree and Above	25.0%
Percent Holding National Board for Professional Teaching Standards	0.0%

Curriculum Highlights

Moyer Academy is proud to present its Honors Elective Courses Program. Moyer offers high level high school courses to students evidencing the ability, motivation and work ethic to master the work. Courses are American Government, Art Appreciation, Criminal Justice, Financial Literacy, Medical Concepts/ Research Methods and Nutrition/ Exercise.

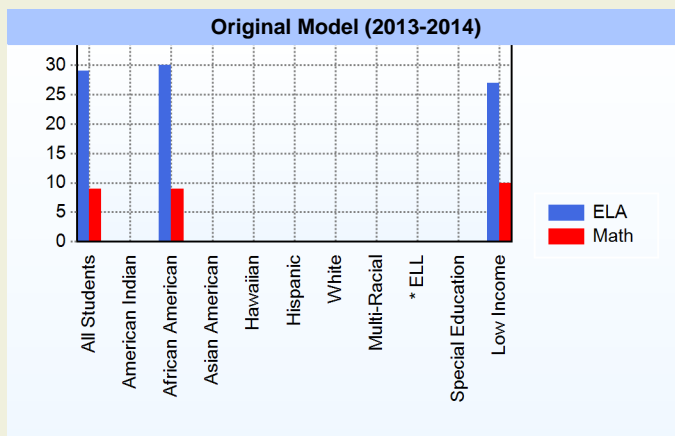
Graduation Rate - ESEA 4 Year Adjusted

	2013	2014
	ESEA	ESEA
All Students	40.5%	32.1%
American Indian		100.0%
African American	43.8%	26.1%
Hispanic	20.0%	50.0%
White		100.0%
Multi-Racial		0.0%
Special Education	53.8%	50.0%
Low Income	41.7%	25.0%

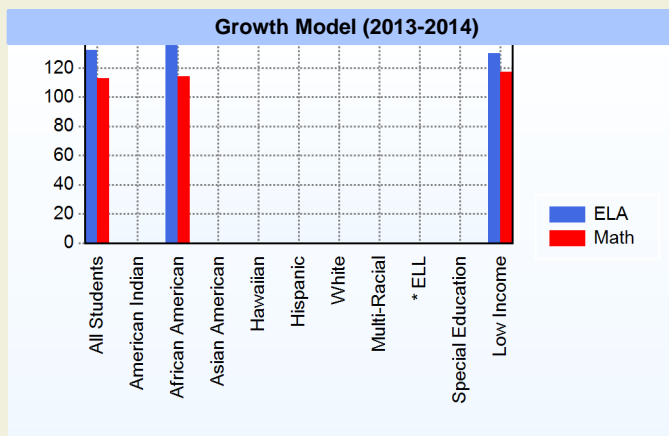
AYP

Only groups with greater than 40 students are reported

Original Model (2013-2014)



Growth Model (2013-2014)



* English Language Learner

* English Language Learner

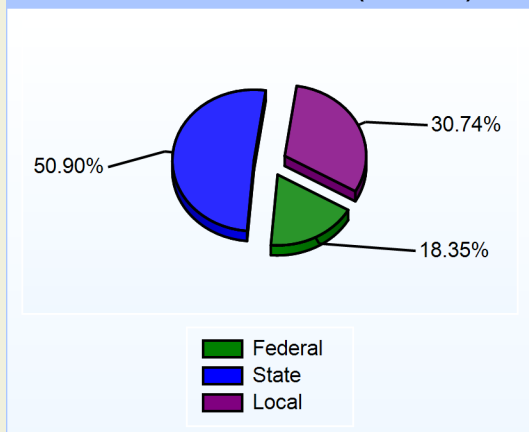
% Test Participation (2013-2014)

	ELA	Math	ELA Goal	Math Goal
All Students	93	99	95	95
American Indian	*	*	95	95
African American	92	99	95	95
Asian American	*	*	95	95
Hawaiian	*	*	95	95
Hispanic	*	*	95	95
White	*	*	95	95
Multi-Racial	*	*	95	95
English Language Learner	*	*	95	95
Special Education	83	*	95	95
Low Income	93	99	95	95

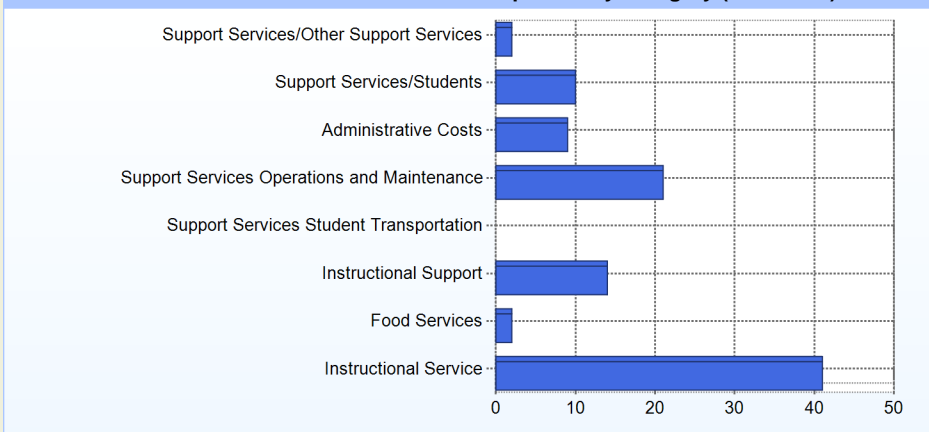
School Finances

District Expenditure per Pupil (2013-2014): \$17,245

District Sources of Revenue (2013-2014)



Percent District Allocation of Current Expenses by Category (2013-2014)



School Salary Allocation

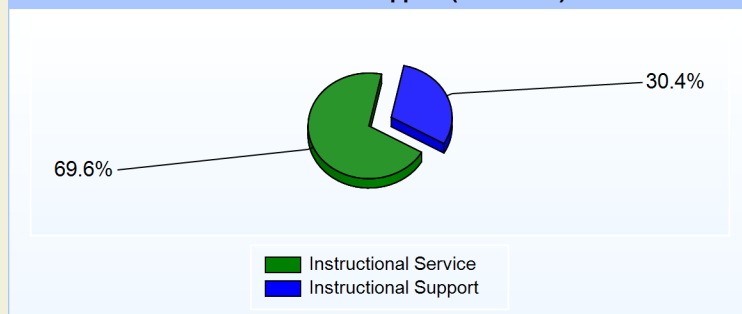
Instructional Service

	2015
Teachers	36.3%
Instructional Support	8.1%
Pupil Support	25.2%
Total	69.6%

Instructional Support

	2015
Administration	14.5%
Secretaries	4.8%
Food Services	1.9%
Maintenance	3.1%
Not Classified	6.1%
Total	30.4%

Instructional vs. Support (2014-2015)



For further information and detailed reports, visit

<http://profiles.doe.k12.de.us>

or contact your local school district office.

Glossary: <http://profiles.doe.k12.de.us/glossary.aspx>



Delaware Department of Education

John G. Townsend Building
401 Federal Street, Suite #2
Dover, Delaware, 19901 - 3639
Phone: (302) 735-4000