

District: Campus Community Charter School
Address: 350 Pear Street, Dover DE 19904
Principal: Catherine Balsley
AYP: Not Met

Telephone: (302) 736-0403
Web: www.campuscommunityschool.us

School Demographics

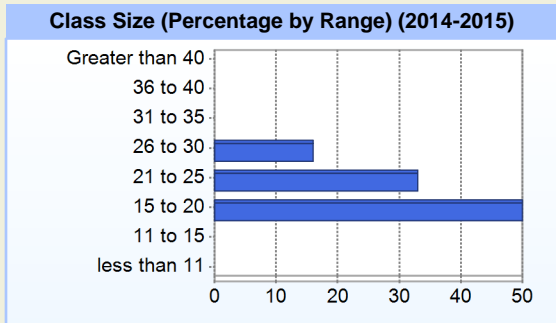
Fall Enrollment		
	2014	2015
Kindergarten	39	36
Grade 1	39	40
Grade 2	36	48
Grade 3	48	34
Grade 4	50	51
Grade 5	50	54
Grade 6	52	55
Grade 7	50	54
Grade 8	47	38
Total	411	410

Enrollment by Race/Ethnicity		
	2014	2015
African American	41.1%	46.1%
American Indian	0.7%	0.2%
Asian	2.4%	2.2%
Hawaiian	0.2%	0.2%
Hispanic/Latino	10.7%	8.8%
White	40.4%	35.6%
Multi-Racial	4.4%	6.8%

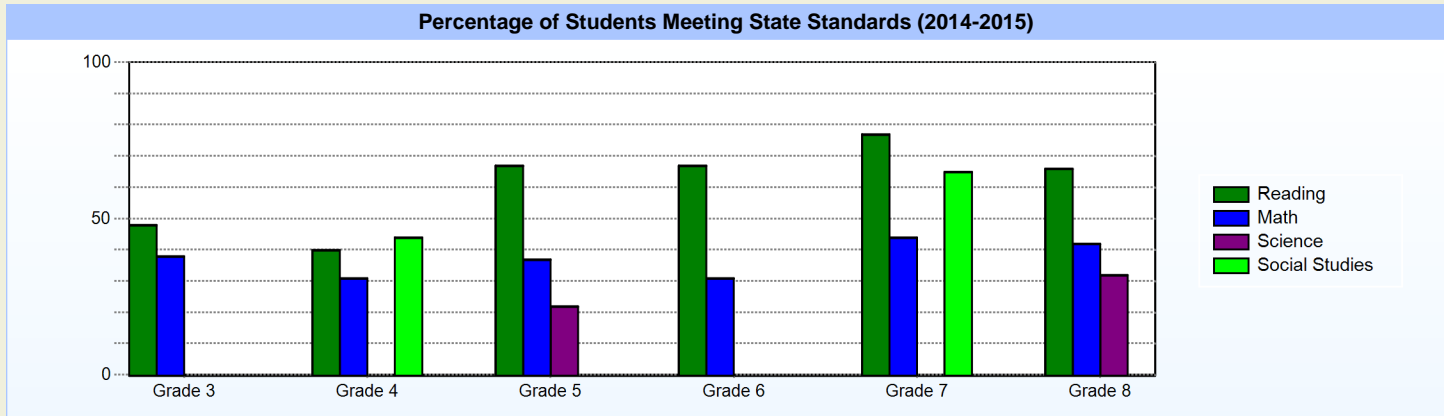
Other Student Characteristics		
	2014	2015
English Language Learner	1.5%	1.5%
Low Income	39.2%	38.3%
Special Education	9.0%	8.3%
Enrolled for Full Year	100.0%	N/A

School Promotion by Grade	
	2014
Kindergarten	94.9%
Grade 1	94.9%
Grade 2	86.1%
Grade 3	100.0%
Grade 4	94.0%
Grade 5	96.0%
Grade 6	96.2%
Grade 7	98.0%
Grade 8	97.9%

Recently Arrived ELL Students	
	2015
Number of Students Not Tested on ELA Assessment	0



Student Achievement



Exemplary Programs

Campus Community School works to make every school program exemplary. All programs are individually tailored to maximize every student's ability. General themes provide overall focus to the curriculum, and within those themes, teachers use National Common Core Standards and Delaware's content standards as a guide for creating activities. Students are monitored and guided to meet high standards of content knowledge, achieve high levels of independent thinking and acquire cognitive skills that will enable them to be lifelong learners and problems solvers. Integrated projects are used to teach the curriculum within the context of relevant real world application. Students learn cooperatively much of the time, developing skills that will serve them well as they progress through school and beyond. High quality work is an expectation.

Student - School Safety and Discipline

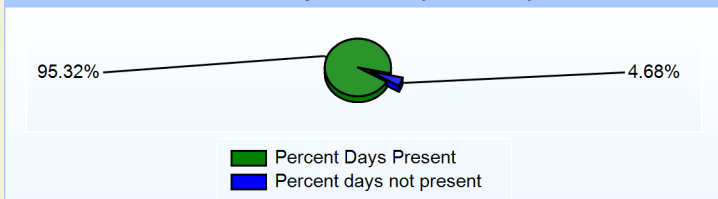
Number of Reported Offenses (2014-2015)

	School	District	State
School Crimes (Title 14, Delaware Code, §4112)	0	0	678
Department of Education (DOE) Offenses	28	28	10432
All School Safety Policy in Place	Yes		

Suspensions and Expulsions

	2015
Number of Suspensions	91
Number of Expulsions	0
Count of Students Suspended/Expelled	45
September 30 Enrollment	410
Percent of Students Suspended/Expelled	11%
District Percentage	11%
State Percentage	12%

Percent Days Present (2014-2015)



Our Staff

Number of Instructional Staff

	2015
Teachers	25
Instructional Support	7
Pupil Support	4
Total	36

Staff by Race/Ethnicity

	2015
American Indian	0.0%
African American	13.9%
Asian American	0.0%
Hispanic	2.8%
White	83.3%

Staffing Ratios

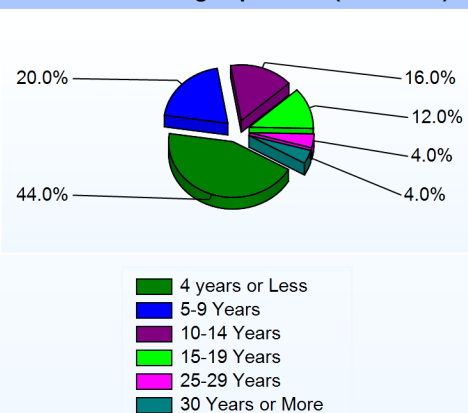
	2015
Students Per Teacher	16
Students Per Administrator	82
Students Per Instructional Staff	13
Students Per Pupil Support Staff	103
School Staff Per Administrator	9

Staff Qualifications

Percentage of Classes Taught by Highly Qualified Teachers (2014-2015)

	Total Classes	% Highly Qualified	% Not Highly Qualified
Reading/ Language Arts	6	100.0%	0.0%
Arts	6	100.0%	0.0%
Foreign Languages	5	100.0%	0.0%
Science	6	0.0%	100.0%
Mathematics	7	57.1%	42.9%
Social Studies	6	100.0%	0.0%
Elementary General	13	100.0%	0.0%

Years of Teaching Experience (2014-2015)



Education Level

	2015
Percent with Masters Degree and Above	36.1%
Percent Holding National Board for Professional Teaching Standards	4.2%

Curriculum Highlights

Integrated Arts:

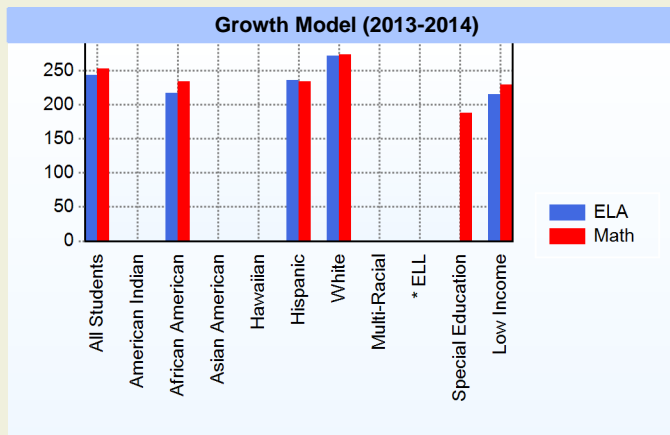
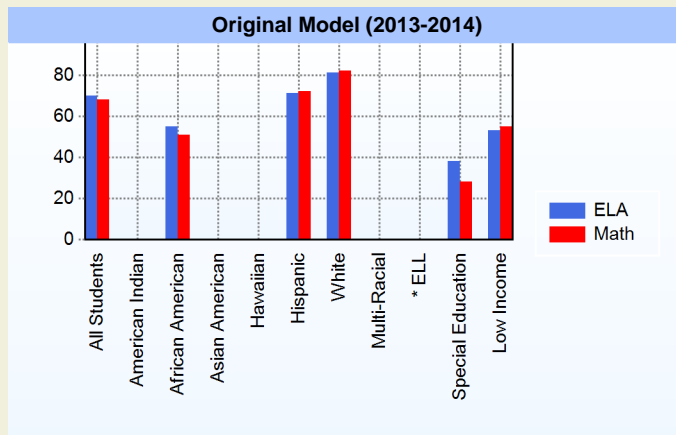
At Campus Community School all curriculum areas are integrated and focus on a central theme. The Arts are an important part of the integrated approach. Art, Music, Spanish, Physical Education and Technology are seen as a way to learn and study math, science, social studies, and language arts as well as being a tool for children to express themselves.

Varied Resources:

A project based learning approach relies on student access to a variety of research resources. While CCS does not rely on any one text book, our classrooms are full of content rich resources. The teacher works to facilitate the exploration of those resources in supportive learning communities.

AYP

Only groups with greater than 40 students are reported



* English Language Learner

* English Language Learner

% Test Participation (2013-2014)

	ELA	Math	ELA Goal	Math Goal
All Students	100	100	95	95
American Indian	*	*	95	95
African American	100	100	95	95
Asian American	*	*	95	95
Hawaiian	*	*	95	95
Hispanic	100	100	95	95
White	100	100	95	95
Multi-Racial	*	*	95	95
English Language Learner	*	*	95	95
Special Education	100	100	95	95
Low Income	100	100	95	95



Other

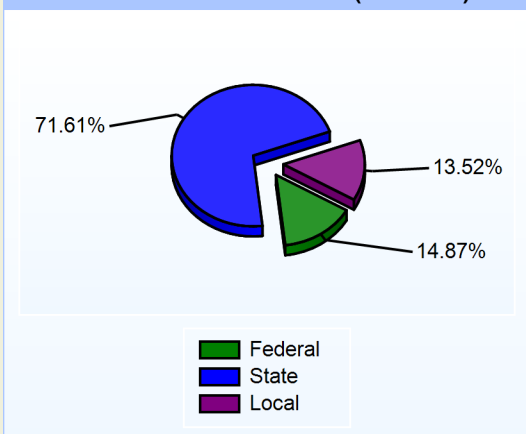
Student Led Conferences:

In an effort to provide a team approach to student success, and promote personal responsibility, students keep portfolios of their work and share their progress with their parents at the end of each trimester. Student led conferences allow students to take an active part in their learning, accept responsibility for their achievements and identify areas in need of attention. These conferences also provide a great deal of information to parents about the types of experiences their children are having on a daily basis.

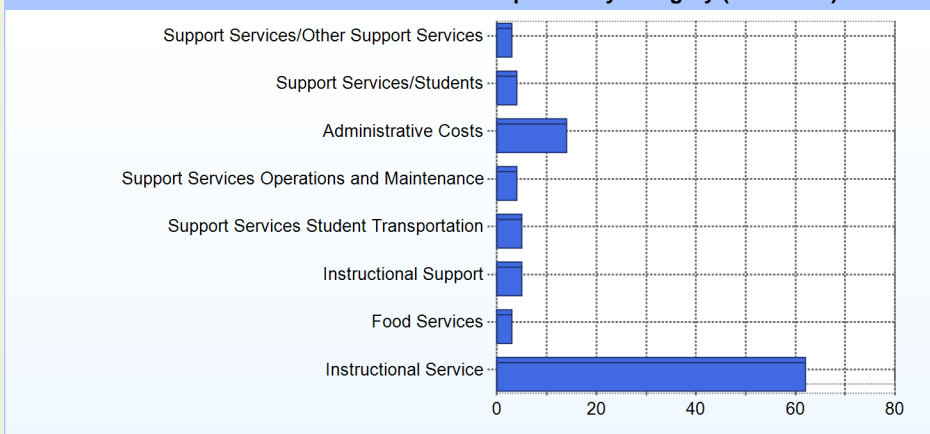
School Finances

District Expenditure per Pupil (2013-2014): \$10,670

District Sources of Revenue (2013-2014)



Percent District Allocation of Current Expenses by Category (2013-2014)

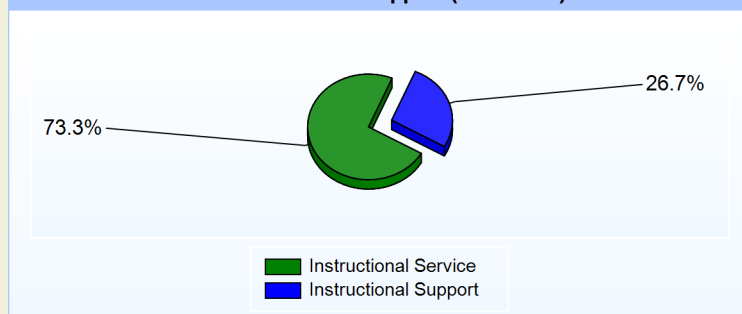


School Salary Allocation

Instructional Service	
	2015
Teachers	62.3%
Instructional Support	6.0%
Pupil Support	5.0%
Total	73.3%

Instructional Support	
	2015
Administration	18.1%
Secretaries	3.8%
Food Services	0.5%
Maintenance	4.3%
Total	26.7%

Instructional vs. Support (2014-2015)



For further information and detailed reports, visit

<http://profiles.doe.k12.de.us>

or contact your local school district office.

Glossary: <http://profiles.doe.k12.de.us/glossary.aspx>



Delaware Department of Education

John G. Townsend Building
 401 Federal Street, Suite #2
 Dover, Delaware, 19901 - 3639
 Phone: (302) 735-4000