

**District:** Edison (Thomas A.) Charter School  
**Address:** 2200 North Locust Street, Wilmington DE 19802  
**Principal:** Salome Thomas-El  
**AYP:** Not Met

**Telephone:** (302) 778-1101  
**Web:** www.thomasedison.charter.k12.de.us

School Demographics

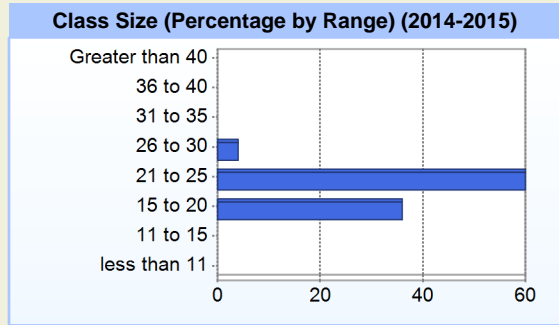
Fall Enrollment		
	2014	2015
Kindergarten	99	89
Grade 1	97	101
Grade 2	98	87
Grade 3	88	93
Grade 4	100	81
Grade 5	80	99
Grade 6	77	69
Grade 7	56	69
Grade 8	53	57
Total	748	745

Enrollment by Race/Ethnicity		
	2014	2015
African American	98.3%	97.2%
Hispanic/Latino	1.3%	1.6%
White	0.4%	1.1%
Multi-Racial		0.1%

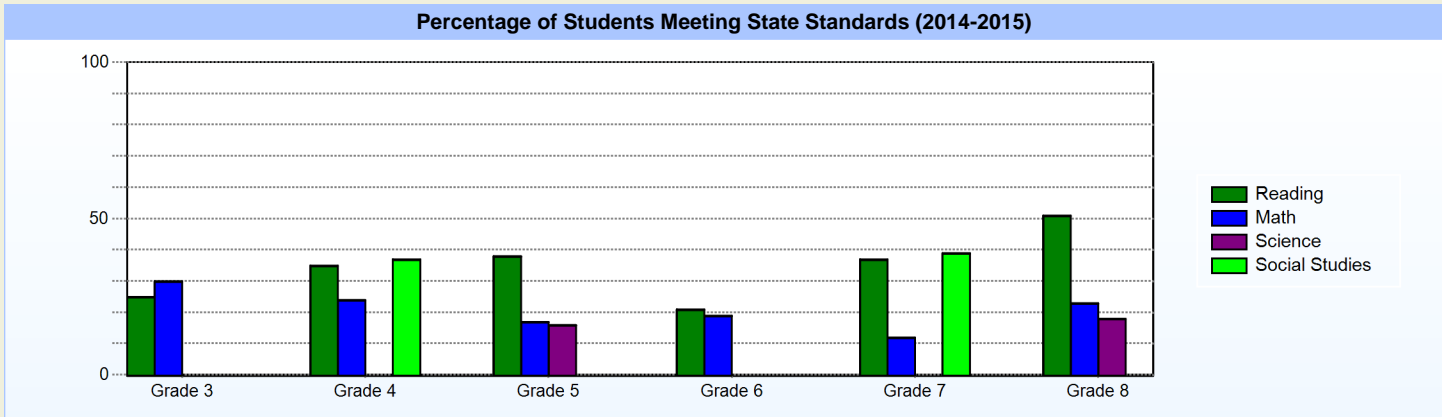
School Promotion by Grade	
	2014
Kindergarten	99.0%
Grade 1	96.9%
Grade 2	99.0%
Grade 3	100.0%
Grade 4	100.0%
Grade 5	100.0%
Grade 6	98.7%
Grade 7	100.0%
Grade 8	100.0%

Other Student Characteristics		
	2014	2015
English Language Learner	0.4%	0.4%
Low Income	80.9%	76.2%
Special Education	6.8%	7.1%
Enrolled for Full Year	100.0%	N/A

Recently Arrived ELL Students	
	2015
Number of Students Not Tested on ELA Assessment	0



Student Achievement



**Exemplary Programs**

Thomas A. Edison Charter School in Wilmington provides a resounding example of a school that is not only meeting the needs of its urban students, but is also holding its students accountable to elevated levels of academic and personal success. This 2011 State Academic Achievement Award winner has been serving students in grades K-8 since opening in 2000 and has implemented a number of rigorous and challenging programs including Franklin Covey's 7-Habits leadership training for all students, Pre-AP Math and English in our middle grades, First Move Chess program in grades 2-3, and our 100-Book Challenge Reading Program, school-wide. Our chess program is one of the top programs in the state and nation. Our students have won the Delaware State Chess Championship, The Baltimore Open and UMBC Championship, and finished as runner-up at the National Chess Championship in San Diego, in 2012 and in 3rd place at the Nationals in Nashville, in 2013.

**Student - School Safety and Discipline**

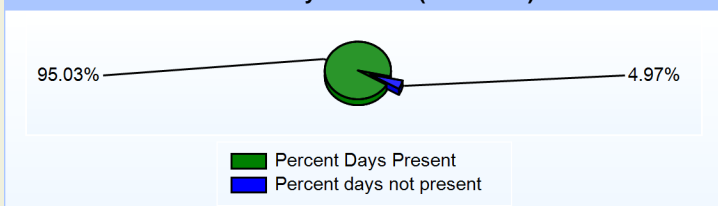
**Number of Reported Offenses (2014-2015)**

	<u>School</u>	<u>District</u>	<u>State</u>
School Crimes (Title 14, Delaware Code, §4112)	0	0	678
Department of Education (DOE) Offenses	28	28	10432
All School Safety Policy in Place	Yes		

**Suspensions and Expulsions**

	<u>2015</u>
Number of Suspensions	134
Number of Expulsions	0
Count of Students Suspended/Expelled	84
September 30 Enrollment	745
Percent of Students Suspended/Expelled	11%
District Percentage	11%
State Percentage	12%

**Percent Days Present (2014-2015)**



**Our Staff**

**Number of Instructional Staff**

	<u>2015</u>
Teachers	47
Librarians	1
Instructional Support	16
Pupil Support	5
Total	69

**Staff by Race/Ethnicity**

	<u>2015</u>
American Indian	0.0%
African American	52.2%
Asian American	1.4%
Hispanic	0.0%
White	46.4%

**Staffing Ratios**

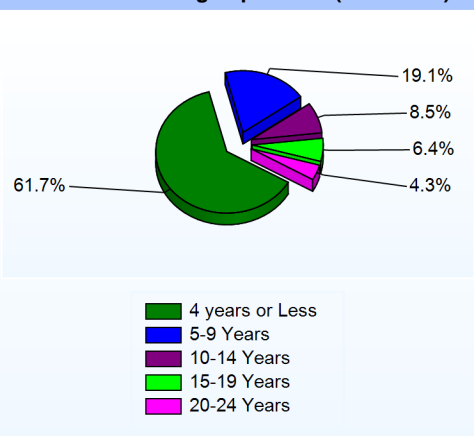
	<u>2015</u>
Students Per Teacher	16
Students Per Administrator	149
Students Per Instructional Staff	12
Students Per Pupil Support Staff	149
School Staff Per Administrator	16

**Staff Qualifications**

**Percentage of Classes Taught by Highly Qualified Teachers (2014-2015)**

	<u>Total Classes</u>	<u>% Highly Qualified</u>	<u>% Not Highly Qualified</u>
Reading/ Language Arts	7	100.0%	0.0%
Arts	17	100.0%	0.0%
Science	7	100.0%	0.0%
Mathematics	7	100.0%	0.0%
Social Studies	3	100.0%	0.0%
History	4	100.0%	0.0%
Elementary General	25	96.0%	4.0%

**Years of Teaching Experience (2014-2015)**



**Education Level**

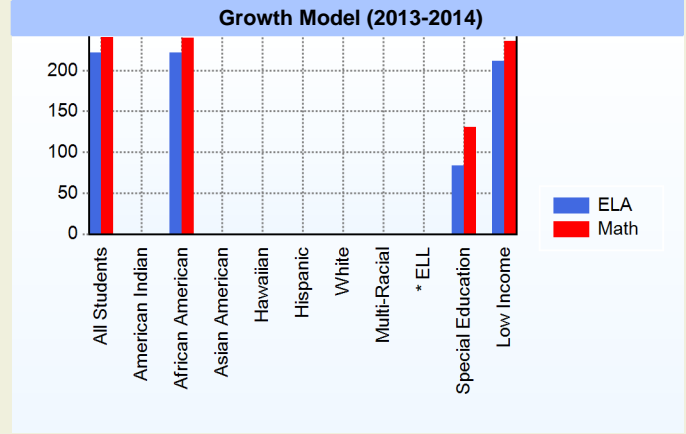
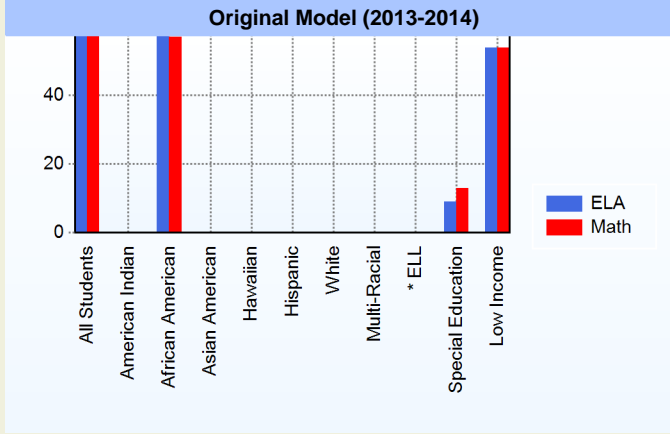
	<u>2015</u>
Percent with Masters Degree and Above	30.4%
Percent Holding National Board for Professional Teaching Standards	0.0%

**Curriculum Highlights**

Maintaining our commitment to the principle of educating the whole child, a rigorous and exciting curriculum is implemented at Thomas Edison Charter to ensure that all students have access to a well-rounded and enjoyable education—both inside and outside of the classroom. All students in grades K-5 are taught reading and literacy using the StoryTown program by Harcourt. StoryTown is a reading and language arts program with a “2+2 then Review” instructional design for skill and strategy development, plus differentiated instruction that meets the needs of all students. Our reading program is research-based and aligned with the National Common Core Curriculum. Our balanced literacy program is supported by the Great Habits, Great Readers framework and our 100 Book Challenge program to supplement and provide support to our students. Our K-5 students are taught math using the Everyday Math Program. Everyday Math enables our students to fully develop and master state content standards.

**AYP**

Only groups with greater than 40 students are reported



\* English Language Learner

\* English Language Learner

**% Test Participation (2013-2014)**

	<u>ELA</u>	<u>Math</u>	<u>ELA Goal</u>	<u>Math Goal</u>
All Students	100	100	95	95
American Indian	*	*	95	95
African American	100	100	95	95
Asian American	*	*	95	95
Hawaiian	*	*	95	95
Hispanic	*	*	95	95
White	*	*	95	95
Multi-Racial	*	*	95	95
English Language Learner	*	*	95	95
Special Education	100	100	95	95
Low Income	100	100	95	95



## Other

Thomas A. Edison Charter School was established in the year 2000 to provide a rigorous education to a historically underserved population of families in North Wilmington. The core philosophy of the school is that all children are capable of learning at high levels if they are taught by caring and dedicated educators, challenged by an engaging and rigorous curriculum, afforded adequate time in school, and held to ambitious state and national standards. Improvements in student performance can be achieved with an efficient school model that transforms how students are taught at every grade level.

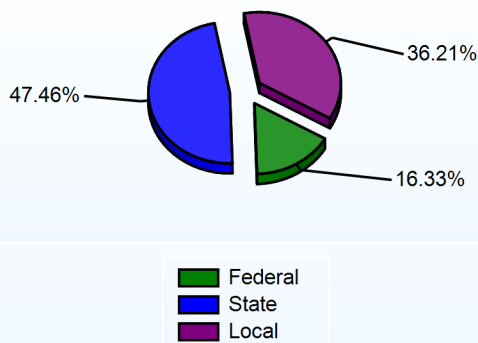
It is the goal of the board of directors, the school administrators, teachers and support staff of Thomas A. Edison to continually improve all students' ability to be critical thinkers and enable them to meet or exceed the state and national curriculum standards.

The vision of the Thomas A. Edison Charter School is to provide a "world class" education to student.

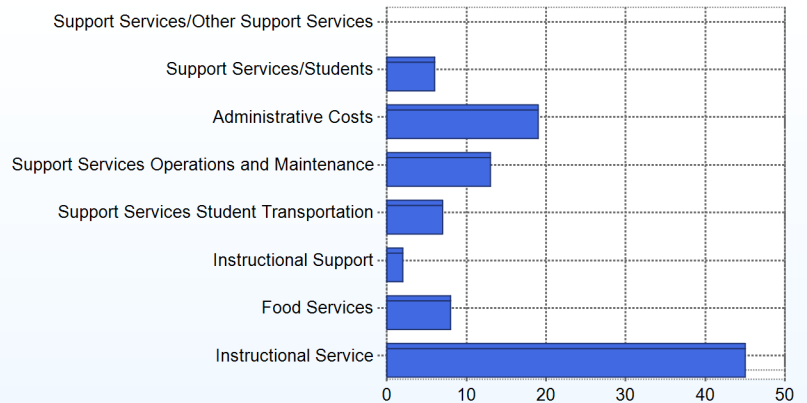
## School Finances

District Expenditure per Pupil (2013-2014): \$11,913

District Sources of Revenue (2013-2014)



Percent District Allocation of Current Expenses by Category (2013-2014)



## School Salary Allocation

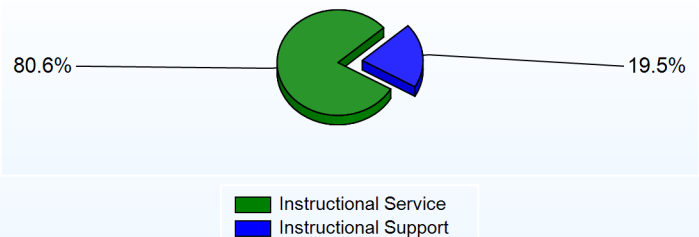
## Instructional Service

	2015
Teachers	57.6%
Librarians	1.2%
Instructional Support	14.4%
Pupil Support	7.4%
Total	80.6%

## Instructional Support

	2015
Administration	11.9%
Secretaries	4.4%
Food Services	3.2%
Total	19.5%

Instructional vs. Support (2014-2015)



For further information and detailed reports, visit

<http://profiles.doe.k12.de.us>

or contact your local school district office.

Glossary: <http://profiles.doe.k12.de.us/glossary.aspx>



## Delaware Department of Education

John G. Townsend Building  
401 Federal Street, Suite #2  
Dover, Delaware, 19901 - 3639  
Phone: (302) 735-4000