

District: Sussex Academy of Arts & Sciences
Address: 21150 Airport Road, Georgetown DE 19947
Principal: Patricia Oliphant
AYP: Met

Telephone: (302) 856-3636
Web: www.sussexacademy.org

School Demographics

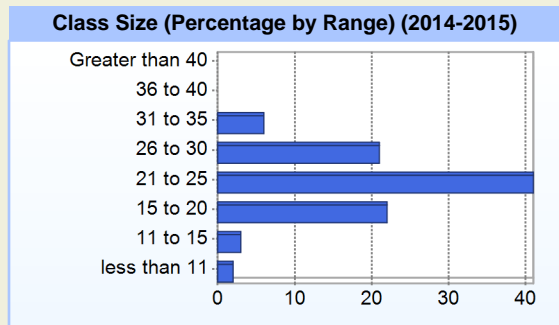
Fall Enrollment		
	2014	2015
Grade 6	120	129
Grade 7	120	127
Grade 8	120	129
Grade 9	52	78
Grade 10		35
Total	412	498

Enrollment by Race/Ethnicity		
	2014	2015
African American	2.9%	3.2%
American Indian	1.9%	1.4%
Asian	3.6%	4.0%
Hawaiian	0.2%	0.4%
Hispanic/Latino	7.3%	9.6%
White	81.3%	78.1%
Multi-Racial	2.7%	3.2%

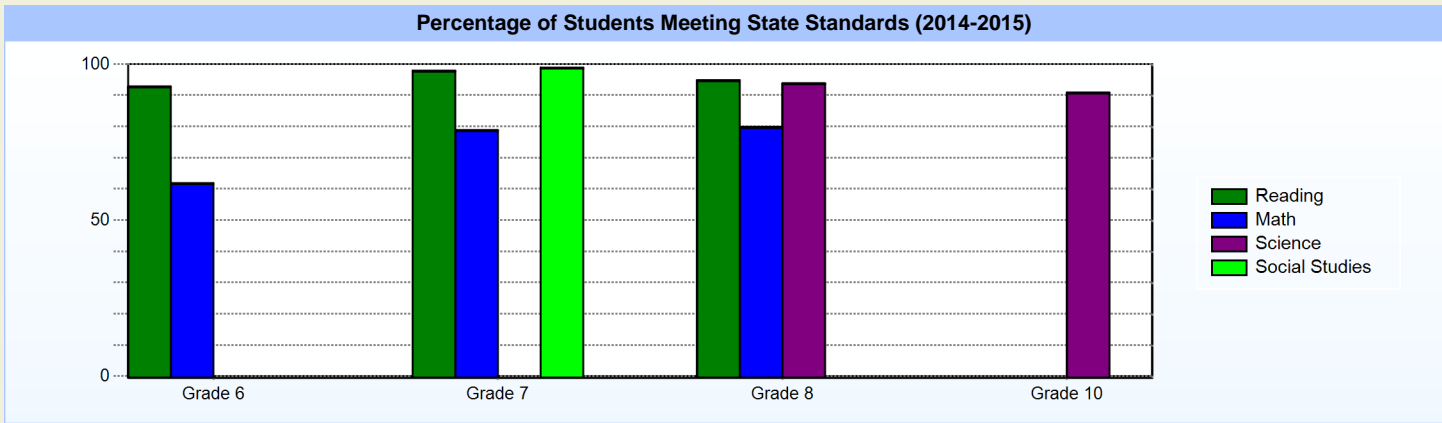
Other Student Characteristics		
	2014	2015
English Language Learner	0.5%	0.4%
Low Income	11.2%	7.8%
Special Education	4.4%	3.6%
Enrolled for Full Year	100.0%	N/A

Recently Arrived ELL Students	
	2015
Number of Students Not Tested on ELA Assessment	0

School Promotion by Grade	
	2014
Grade 6	100.0%
Grade 7	100.0%
Grade 8	99.2%
Grade 9	80.8%



Student Achievement



Exemplary Programs

Sussex Academy uses the expeditionary learning concept and the International Baccalaureate Diploma Program as its instructional framework. The expeditionary model emphasizes learning by doing with a particular focus on character growth, teamwork and literacy. The school is structured around five core practices: learning expeditions, active pedagogy, structures, character and culture, and leadership and improvement. The practices are reflected in learning experiences, which are project-based and student-centered. All middle school students keep portfolios, complete community service and assessment is ongoing.

The International Baccalaureate Diploma Program focuses on global ideas across disciplines. Sussex Academy became an official International Baccalaureate School in March 2015. All 11th grade students are currently enrolled in IB classes. Sussex Academy maintains a strong commitment to wellness and school culture that is reinforced by the Superior Academics.

Student - School Safety and Discipline

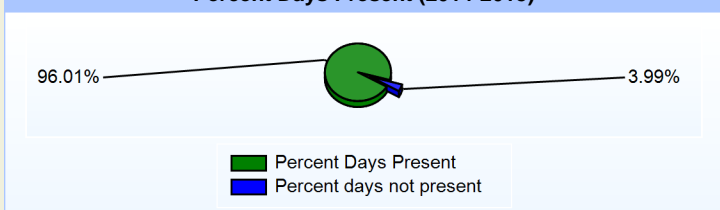
Number of Reported Offenses (2014-2015)

	<u>School</u>	<u>District</u>	<u>State</u>
School Crimes (Title 14, Delaware Code, §4112)	0	0	678
Department of Education (DOE) Offenses	0	0	10432
All School Safety Policy in Place	Yes		

Suspensions and Expulsions

	<u>2015</u>
Number of Suspensions	5
Number of Expulsions	0
Count of Students Suspended/Expelled	5
September 30 Enrollment	498
Percent of Students Suspended/Expelled	1%
District Percentage	1%
State Percentage	12%

Percent Days Present (2014-2015)



Our Staff

Number of Instructional Staff

	<u>2015</u>
Teachers	26
Instructional Support	1
Pupil Support	5
Total	32

Staff by Race/Ethnicity

	<u>2015</u>
American Indian	0.0%
African American	0.0%
Asian American	0.0%
Hispanic	0.0%
White	100.0%

Staffing Ratios

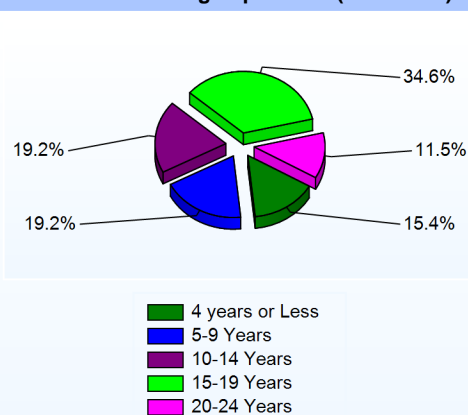
	<u>2015</u>
Students Per Teacher	19
Students Per Administrator	249
Students Per Instructional Staff	18
Students Per Pupil Support Staff	100
School Staff Per Administrator	22

Staff Qualifications

Percentage of Classes Taught by Highly Qualified Teachers (2014-2015)

	<u>Total Classes</u>	<u>% Highly Qualified</u>	<u>% Not Highly Qualified</u>
Reading/ Language Arts	38	100.0%	0.0%
Foreign Languages	6	100.0%	0.0%
Science	21	100.0%	0.0%
Mathematics	21	100.0%	0.0%
Social Studies	21	100.0%	0.0%

Years of Teaching Experience (2014-2015)



Education Level

	<u>2015</u>
Percent with Masters Degree and Above	81.3%
Percent Holding National Board for Professional Teaching Standards	8.0%

Curriculum Highlights

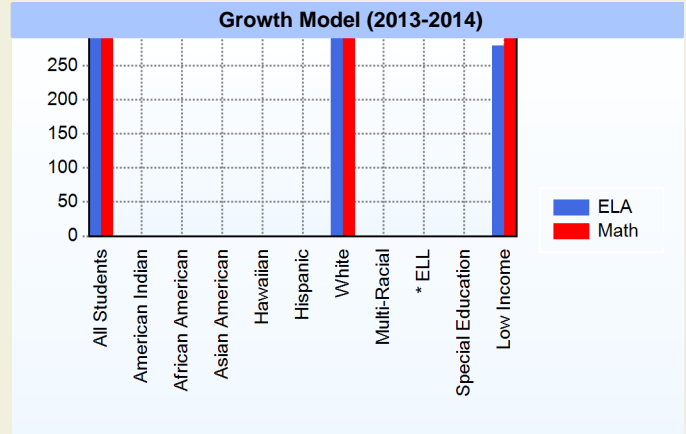
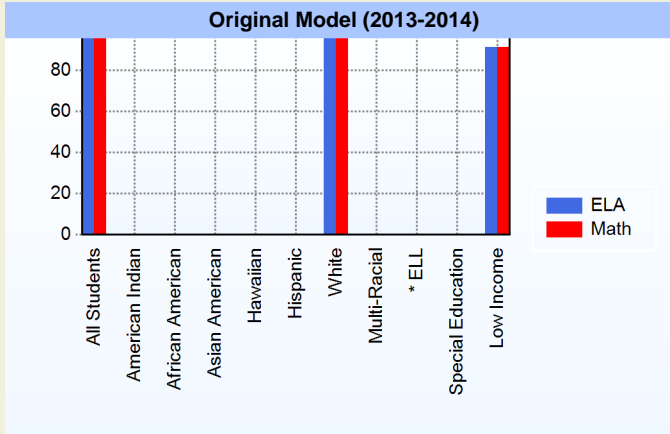
In middle school students take five core courses (reading, writing, mathematics, science and social studies) that are grounded in the state content and common core standards. In addition, they take "Exploratories" throughout the year. Literacy is the instructional focus of the middle school years.

The high school curriculum is grounded in common core and content standards. The curriculum reflects the rigor of the International Baccalaureate Program with IB preparatory courses in grades 9 and 10 and IB courses for grades 11 and 12.

Extra curricular activities include middle school, junior varsity and varsity sports, intramurals, band, chorus, theater and school clubs and organizations.

AYP

Only groups with greater than 40 students are reported



* English Language Learner

* English Language Learner

% Test Participation (2013-2014)

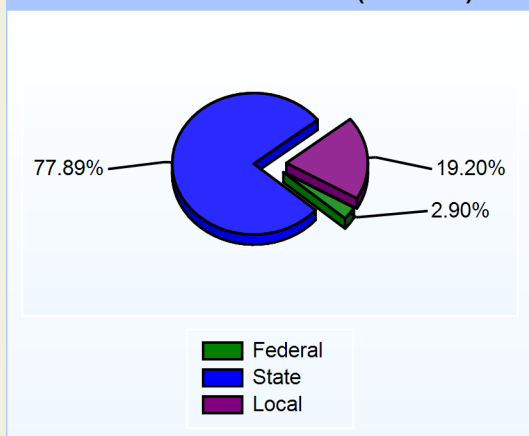
	<u>ELA</u>	<u>Math</u>	<u>ELA Goal</u>	<u>Math Goal</u>
All Students	100	100	95	95
American Indian	*	*	95	95
African American	*	*	95	95
Asian American	*	*	95	95
Hawaiian	*	*	95	95
Hispanic	*	*	95	95
White	100	100	95	95
Multi-Racial	*	*	95	95
English Language Learner	*	*	95	95
Special Education	*	*	95	95
Low Income	100	100	95	95



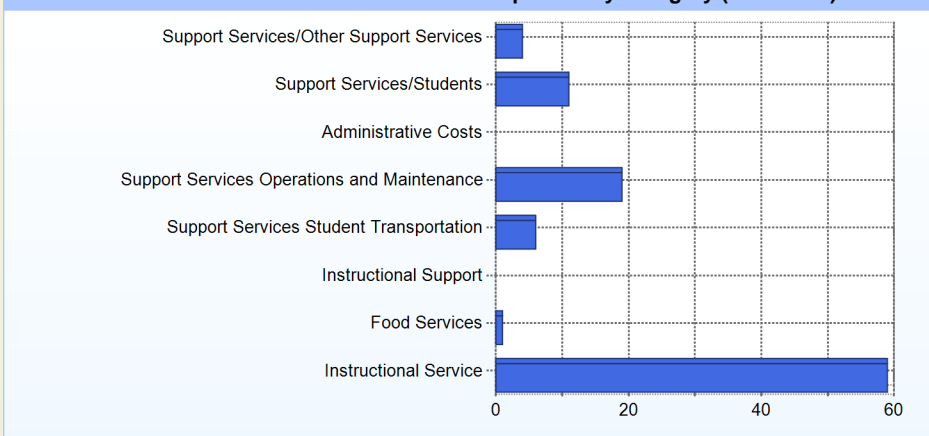
School Finances

District Expenditure per Pupil (2013-2014): \$10,850

District Sources of Revenue (2013-2014)



Percent District Allocation of Current Expenses by Category (2013-2014)



School Salary Allocation

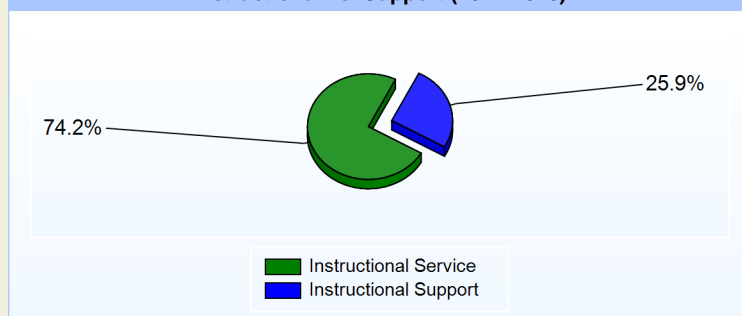
Instructional Service

	2015
Teachers	65.1%
Instructional Support	1.8%
Pupil Support	7.3%
Total	74.2%

Instructional Support

	2015
Administration	9.1%
Secretaries	6.3%
Maintenance	8.6%
Not Classified	1.9%
Total	25.9%

Instructional vs. Support (2014-2015)



For further information and detailed reports, visit

<http://profiles.doe.k12.de.us>

or contact your local school district office.

Glossary: <http://profiles.doe.k12.de.us/glossary.aspx>



Delaware Department of Education

John G. Townsend Building
 401 Federal Street, Suite #2
 Dover, Delaware, 19901 - 3639
 Phone: (302) 735-4000