

District: Positive Outcomes Charter School
Address: 3337 South DuPont Highway, Camden DE 19934
Principal: Edward Emmett
AYP: Not Met

Telephone: (302) 697-8805
Web: www.positiveoutcomescs.org

School Demographics

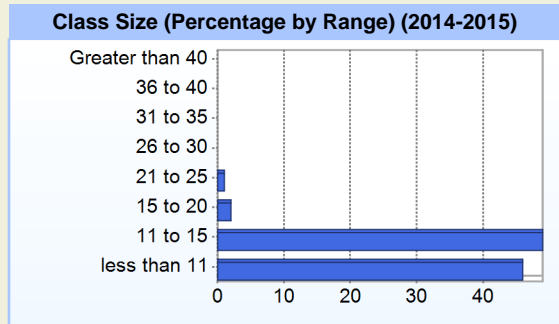
Fall Enrollment		
	2014	2015
Grade 7	14	10
Grade 8	21	18
Grade 9	25	32
Grade 10	27	31
Grade 11	20	29
Grade 12	13	6
Total	120	126

Enrollment by Race/Ethnicity		
	2014	2015
African American	25.8%	23.8%
American Indian	1.7%	
Asian		0.8%
Hispanic/Latino	5.0%	4.0%
White	65.8%	70.6%
Multi-Racial	1.7%	0.8%

Other Student Characteristics		
	2014	2015
English Language Learner	0.0%	0.0%
Low Income	38.3%	31.7%
Special Education	63.3%	65.9%
Enrolled for Full Year	100.0%	N/A

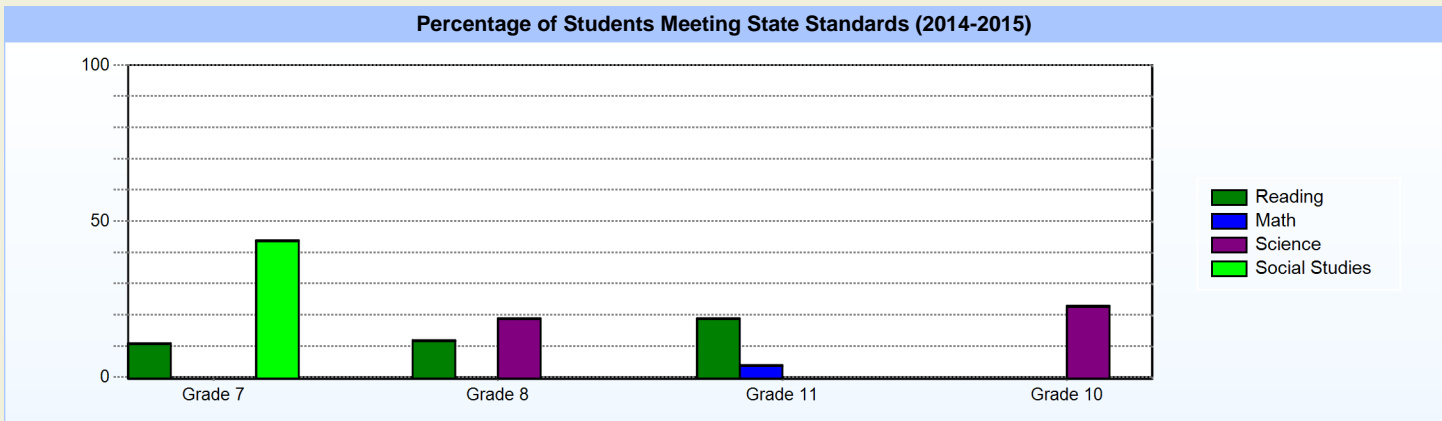
Recently Arrived ELL Students	
	2015
Number of Students Not Tested on ELA Assessment	0

School Promotion by Grade	
	2014
Grade 7	100.0%
Grade 8	100.0%
Grade 9	96.0%
Grade 10	85.2%
Grade 11	60.0%
Grade 12	100.0%



Student Achievement

SAT: Average Scores for the Class of (2013-2014)				
	School	District	State	National
Math	316	316	438	513
Critical Reading	323	323	430	497
Writing	308	308	423	487
Total	947	947	1,291	1,497



Exemplary Programs

Positive Outcomes Charter School provides its families with exemplary programs in all facets. Our school strives to help students that have experienced previous academic challenges in a traditional school setting. What brings families to our school is its attention to the individual needs of students. Small class sizes, assistive technology for all, a focus on collaboration and teamwork of all members of the school community, and a highly qualified staff with special education experience are the primary reasons that families choose POCS. What also draws families are the dramatic gains in both academic confidence and capacity of students as demonstrated by gains on standardized assessments and other indicators.

Each year our parents indicate that over 95% are satisfied with our school and our academic programs and almost 100% would refer other families to our school.

Student - School Safety and Discipline

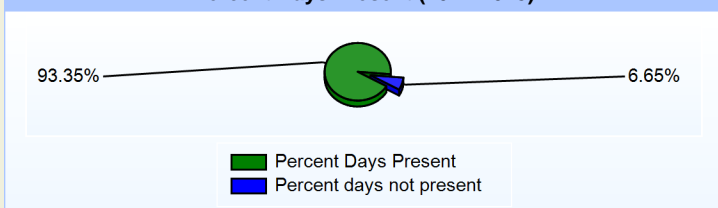
Number of Reported Offenses (2014-2015)

	<u>School</u>	<u>District</u>	<u>State</u>
School Crimes (Title 14, Delaware Code, §4112)	1	1	678
Department of Education (DOE) Offenses	32	32	10432
All School Safety Policy in Place	Yes		

Suspensions and Expulsions

	<u>2015</u>
Number of Suspensions	70
Number of Expulsions	0
Count of Students Suspended/Expelled	33
September 30 Enrollment	126
Percent of Students Suspended/Expelled	26%
District Percentage	26%
State Percentage	12%

Percent Days Present (2014-2015)



Our Staff

Number of Instructional Staff

	<u>2015</u>
Teachers	15
Instructional Support	5
Pupil Support	2
Total	22

Staff by Race/Ethnicity

	<u>2015</u>
American Indian	0.0%
African American	13.6%
Asian American	0.0%
Hispanic	0.0%
White	86.4%

Staffing Ratios

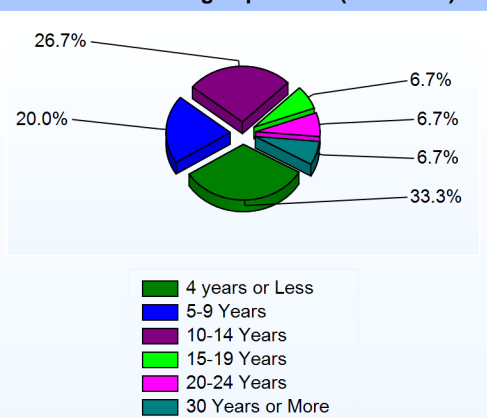
	<u>2015</u>
Students Per Teacher	8
Students Per Administrator	63
Students Per Instructional Staff	6
Students Per Pupil Support Staff	63
School Staff Per Administrator	13

Staff Qualifications

Percentage of Classes Taught by Highly Qualified Teachers (2014-2015)

	<u>Total Classes</u>	<u>% Highly Qualified</u>	<u>% Not Highly Qualified</u>
English	12	100.0%	0.0%
Reading/ Language Arts	11	100.0%	0.0%
Foreign Languages	4	0.0%	100.0%
Science	12	75.0%	25.0%
Mathematics	12	75.0%	25.0%
Civics & Government	3	100.0%	0.0%
Economics	3	100.0%	0.0%
Social Studies	2	100.0%	0.0%
History	4	100.0%	0.0%

Years of Teaching Experience (2014-2015)



Education Level

	<u>2015</u>
Percent with Masters Degree and Above	63.6%
Percent Holding National Board for Professional Teaching Standards	0.0%

Curriculum Highlights

The school has integrated the Big Picture Learning School Model into our program. Big Picture Learning's model is focused in the individual success of each student. This is completed through completely understanding student's passions and interests. Using this information, the school seeks to individualize programs to help students achieve their goals. Each student has an Individualized Student Learning Plan that defines goals, progress and successes. Each student in our school has the opportunity to participate in authentic internships, dual enrollment in college or other identified programs.

Each student also participates in an advisory. This advisory program helps connect students to each other and also provides a support structure for them to experience success.

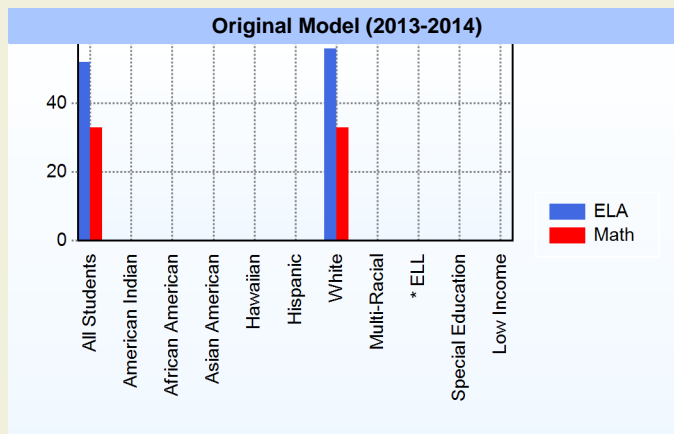
Graduation Rate - ESEA 4 Year Adjusted

	2013	2014
	ESEA	ESEA
All Students	50.0%	54.5%
African American	42.9%	80.0%
Asian American	100.0%	
Hispanic	0.0%	0.0%
White	52.4%	46.7%
Multi-Racial		100.0%
Special Education	58.8%	60.0%
Low Income	38.9%	52.9%

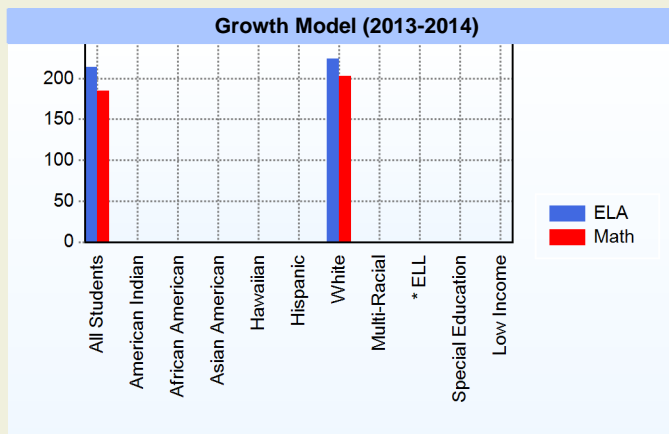
AYP

Only groups with greater than 40 students are reported

Original Model (2013-2014)



Growth Model (2013-2014)



* English Language Learner

* English Language Learner

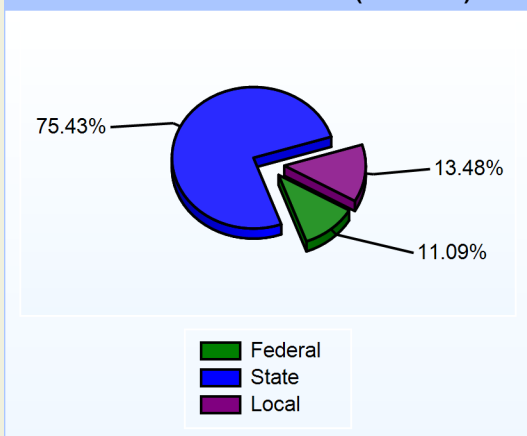
% Test Participation (2013-2014)

	ELA	Math	ELA Goal	Math Goal
All Students	98	100	95	95
American Indian	*	*	95	95
African American	*	*	95	95
Asian American	*	*	95	95
Hawaiian	*	*	95	95
Hispanic	*	*	95	95
White	98	100	95	95
Multi-Racial	*	*	95	95
English Language Learner	*	*	95	95
Special Education	97	*	95	95
Low Income	*	*	95	95

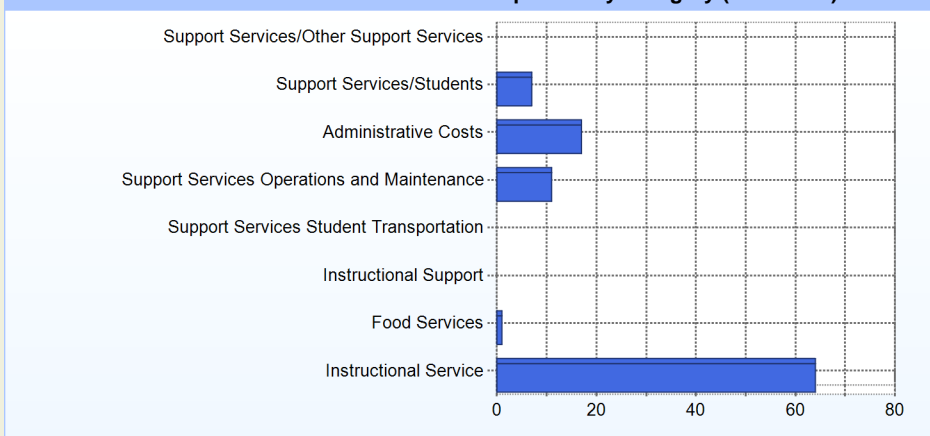
School Finances

District Expenditure per Pupil (2013-2014): \$24,233

District Sources of Revenue (2013-2014)



Percent District Allocation of Current Expenses by Category (2013-2014)



School Salary Allocation

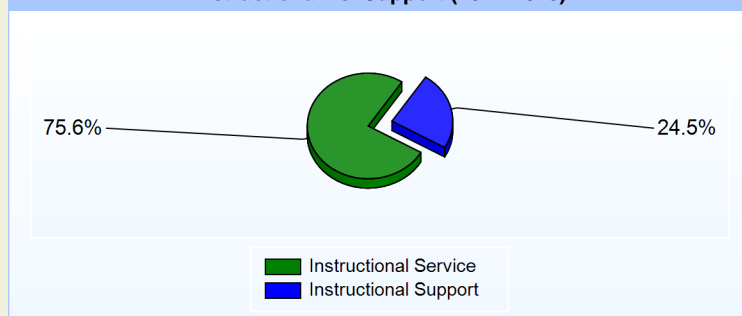
Instructional Service

	2015
Teachers	57.0%
Instructional Support	9.8%
Pupil Support	8.8%
Total	75.6%

Instructional Support

	2015
Administration	13.2%
Secretaries	11.3%
Total	24.5%

Instructional vs. Support (2014-2015)



For further information and detailed reports, visit

<http://profiles.doe.k12.de.us>

or contact your local school district office.

Glossary: <http://profiles.doe.k12.de.us/glossary.aspx>



Delaware Department of Education

John G. Townsend Building
 401 Federal Street, Suite #2
 Dover, Delaware, 19901 - 3639
 Phone: (302) 735-4000