

District: Odyssey Charter School
Address: 4319 Lancaster Pike, Building 22, Wilmington DE 19805
Principal: Dr. Nick Manolakos
AYP: Met

Telephone: (302) 655-5760
Web: www.odysseycharterschoodel.org

School Demographics

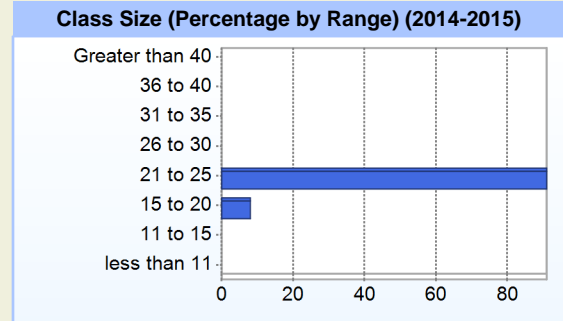
Fall Enrollment		
	2014	2015
Kindergarten	119	132
Grade 1	125	132
Grade 2	121	133
Grade 3	86	133
Grade 4	87	110
Grade 5	79	105
Grade 6	85	86
Grade 7		102
Total	702	933

Enrollment by Race/Ethnicity		
	2014	2015
African American	16.5%	22.1%
American Indian	0.4%	0.4%
Asian	5.3%	7.1%
Hawaiian	1.4%	0.9%
Hispanic/Latino	7.0%	6.0%
White	69.4%	62.4%
Multi-Racial		1.2%

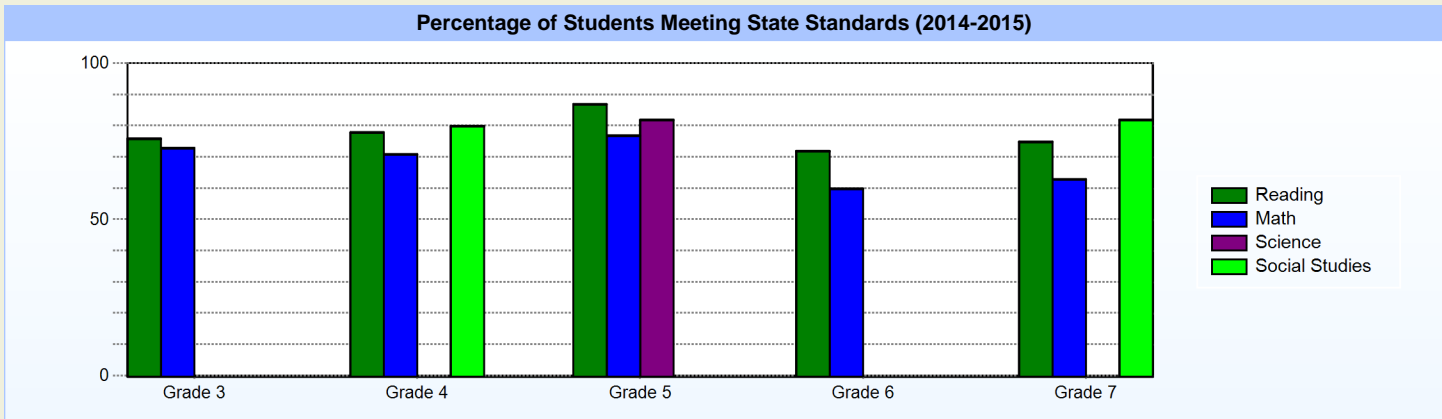
Other Student Characteristics		
	2014	2015
English Language Learner	0.6%	0.4%
Low Income	17.8%	17.9%
Special Education	4.0%	4.4%
Enrolled for Full Year	100.0%	N/A

School Promotion by Grade	
	2014
Kindergarten	100.0%
Grade 1	98.4%
Grade 2	100.0%
Grade 3	98.8%
Grade 4	98.9%
Grade 5	100.0%
Grade 6	100.0%

Recently Arrived ELL Students	
	2015
Number of Students Not Tested on ELA Assessment	0



Student Achievement



Exemplary Programs

Odyssey Charter School's mission is to provide its students with a lifelong enthusiasm for learning, to help students develop a keen awareness of world citizenship and culture, and to establish critical thinking and problem-solving skills through participation in a foreign language education program. Our students excel in the areas of language arts and mathematics, while achieving proficiency in the Greek language.

At its core, Odyssey Charter School believes that through the teaching of a structured and focused bilingual and classical education in a nurturing environment, students will develop as intellectual learners and divergent thinkers, and function as good citizens. These attributes enable Odyssey students to become productive, successful members of society who are problem solvers, critical thinkers, lifelong learners and achievers, flexible and adaptable, empowered, academically well-rounded and proficient, and respectful and responsible members in the school and community

Student - School Safety and Discipline

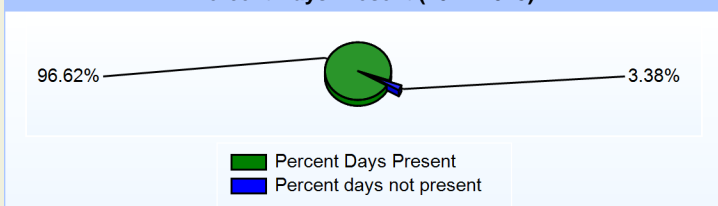
Number of Reported Offenses (2014-2015)

	<u>School</u>	<u>District</u>	<u>State</u>
School Crimes (Title 14, Delaware Code, §4112)	0	0	678
Department of Education (DOE) Offenses	10	10	10432
All School Safety Policy in Place	Yes		

Suspensions and Expulsions

	<u>2015</u>
Number of Suspensions	37
Number of Expulsions	0
Count of Students Suspended/Expelled	19
September 30 Enrollment	933
Percent of Students Suspended/Expelled	2%
District Percentage	2%
State Percentage	12%

Percent Days Present (2014-2015)



Our Staff

Number of Instructional Staff

	<u>2015</u>
Teachers	79
Instructional Support	10
Pupil Support	6
Total	95

Staff by Race/Ethnicity

	<u>2015</u>
American Indian	0.0%
African American	2.1%
Asian American	1.1%
Hispanic	1.1%
White	95.8%

Staffing Ratios

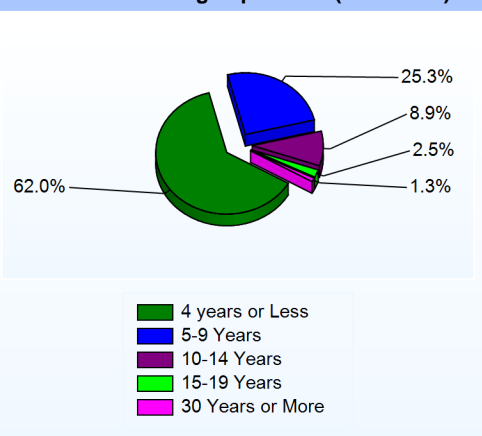
	<u>2015</u>
Students Per Teacher	12
Students Per Administrator	133
Students Per Instructional Staff	11
Students Per Pupil Support Staff	156
School Staff Per Administrator	16

Staff Qualifications

Percentage of Classes Taught by Highly Qualified Teachers (2014-2015)

	<u>Total Classes</u>	<u>% Highly Qualified</u>	<u>% Not Highly Qualified</u>
Reading/ Language Arts	16	81.3%	18.8%
Arts	14	100.0%	0.0%
Science	10	100.0%	0.0%
Mathematics	10	100.0%	0.0%
Social Studies	10	100.0%	0.0%
Elementary General	34	97.1%	2.9%

Years of Teaching Experience (2014-2015)



Education Level

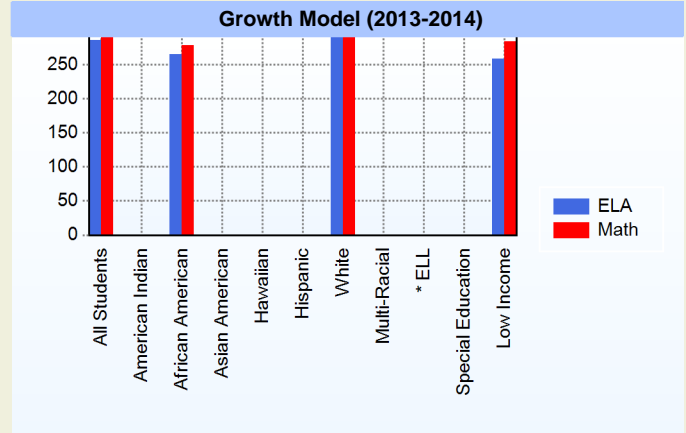
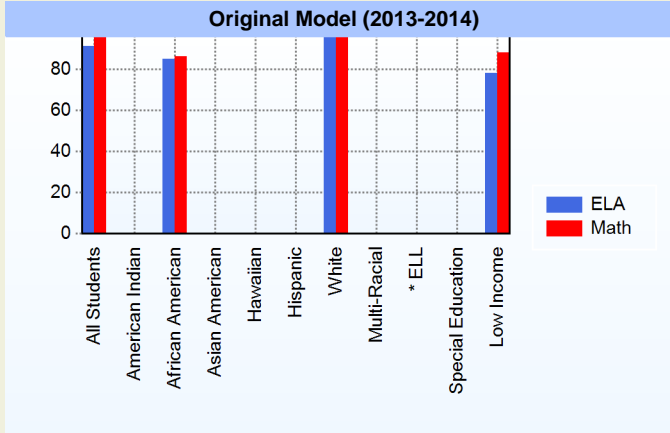
	<u>2015</u>
Percent with Masters Degree and Above	33.7%
Percent Holding National Board for Professional Teaching Standards	0.0%

Curriculum Highlights

Odyssey Charter School utilizes a classical approach to public education and offers a rigorous, standards-based curriculum and instruction in the English and Greek languages, delivered in a challenging, yet nurturing, learning environment. Odyssey Charter School delivers instruction in the core subjects of language arts, mathematics, science, and social studies. In addition, students receive a daily Greek Language class and a second unit of math taught in the Greek language. These added exclusive features to Odyssey Charter School are provided by credentialed instructors from Greece. Students also experience specialized instruction in art, physical education, and music, and are encouraged to maximize their second language and foreign culture experience.

AYP

Only groups with greater than 40 students are reported



* English Language Learner

* English Language Learner

% Test Participation (2013-2014)

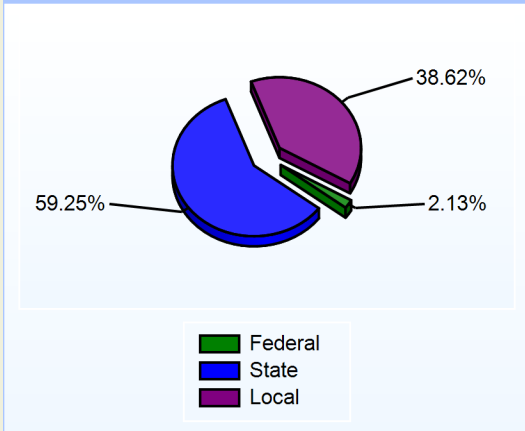
	<u>ELA</u>	<u>Math</u>	<u>ELA Goal</u>	<u>Math Goal</u>
All Students	100	100	95	95
American Indian	*	*	95	95
African American	100	100	95	95
Asian American	*	*	95	95
Hawaiian	*	*	95	95
Hispanic	*	*	95	95
White	100	100	95	95
Multi-Racial	*	*	95	95
English Language Learner	*	*	95	95
Special Education	*	*	95	95
Low Income	100	100	95	95



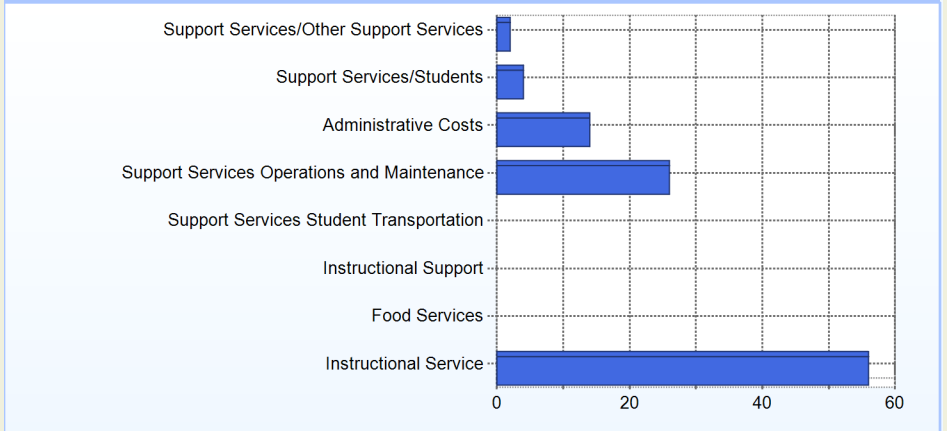
School Finances

District Expenditure per Pupil (2013-2014): \$12,645

District Sources of Revenue (2013-2014)



Percent District Allocation of Current Expenses by Category (2013-2014)

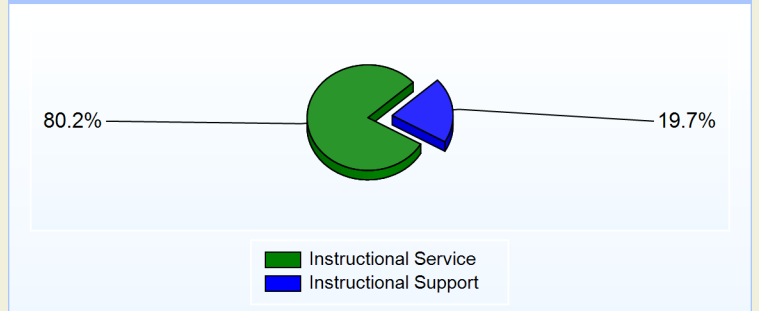


School Salary Allocation

Instructional Service	
2015	
Teachers	69.5%
Instructional Support	5.6%
Pupil Support	5.1%
Total	80.2%

Instructional Support	
2015	
Administration	10.9%
Secretaries	4.9%
Food Services	3.9%
Total	19.7%

Instructional vs. Support (2014-2015)



For further information and detailed reports, visit

<http://profiles.doe.k12.de.us>

or contact your local school district office.

Glossary: <http://profiles.doe.k12.de.us/glossary.aspx>



Delaware Department of Education

John G. Townsend Building
 401 Federal Street, Suite #2
 Dover, Delaware, 19901 - 3639
 Phone: (302) 735-4000