

**District:** Newark Charter School  
**Address:** 2001 Patriot Way, Newark DE 19711  
**Principal:** Gregory Meece  
**AYP:** Met

**Telephone:** (302) 369-2001  
**Web:** www.ncs.charter.k12.de.us

**School Demographics**

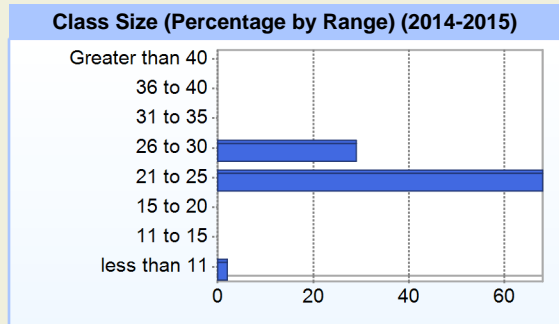
Fall Enrollment		
	2014	2015
Kindergarten	190	190
Grade 1	190	190
Grade 2	190	190
Grade 3	190	190
Grade 4	190	190
Grade 5	163	190
Grade 6	163	164
Grade 7	163	162
Grade 8	160	161
Grade 9	161	160
Grade 10		161
Total	1760	1948

Enrollment by Race/Ethnicity		
	2014	2015
African American	11.0%	11.4%
American Indian	0.2%	0.3%
Asian	13.4%	12.9%
Hispanic/Latino	4.0%	4.4%
White	65.8%	65.2%
Multi-Racial	5.6%	5.6%

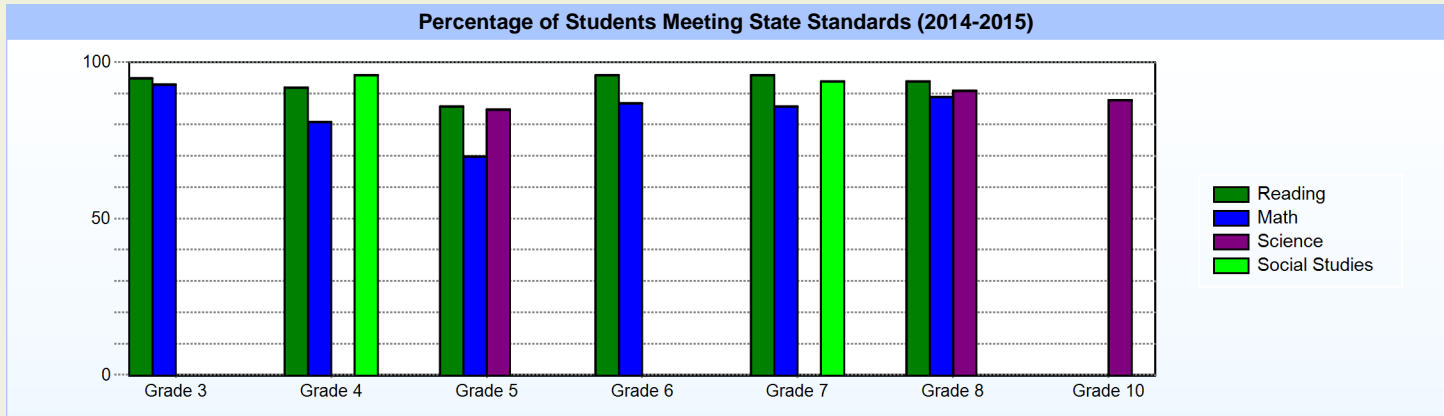
Other Student Characteristics		
	2014	2015
English Language Learner	2.7%	2.5%
Low Income	8.4%	7.2%
Special Education	5.7%	5.6%
Enrolled for Full Year	100.0%	N/A

School Promotion by Grade	
	2014
Kindergarten	94.2%
Grade 1	100.0%
Grade 2	99.5%
Grade 3	100.0%
Grade 4	100.0%
Grade 5	100.0%
Grade 6	100.0%
Grade 7	100.0%
Grade 8	100.0%
Grade 9	98.8%

Recently Arrived ELL Students	
	2015
Number of Students Not Tested on ELA Assessment	0



**Student Achievement**



**Exemplary Programs**

Newark Charter School provides its families with exemplary programs in academics, extracurricular activities, the arts, and athletics. Our community of educators, families and students value scholarship, good citizenship, and creativity. NCS offers an educational option within the public school system for families and students seeking a strong academic program that invites and encourages family involvement in a child's education.

As important as what the school provides is how the school operates. Newark Charter School utilizes authentic shared decision making and site-based management in all aspects of the school. There is a high level of parent involvement and teachers are given greater autonomy in their classrooms. The school is held accountable for the results, in large part, because its "customers" must choose the school. Also, parents are surveyed regularly to determine their level of satisfaction with the school as well as to obtain input.

**Student - School Safety and Discipline**

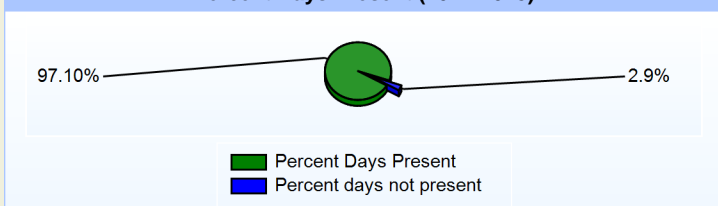
**Number of Reported Offenses (2014-2015)**

	<u>School</u>	<u>District</u>	<u>State</u>
School Crimes (Title 14, Delaware Code, §4112)	9	9	678
Department of Education (DOE) Offenses	20	20	10432
All School Safety Policy in Place	Yes		

**Suspensions and Expulsions**

	<u>2015</u>
Number of Suspensions	52
Number of Expulsions	0
Count of Students Suspended/Expelled	44
September 30 Enrollment	1948
Percent of Students Suspended/Expelled	2%
District Percentage	2%
State Percentage	12%

**Percent Days Present (2014-2015)**



**Our Staff**

**Number of Instructional Staff**

	<u>2015</u>
Teachers	116
Librarians	1
Instructional Support	22
Pupil Support	11
Total	150

**Staff by Race/Ethnicity**

	<u>2015</u>
American Indian	0.0%
African American	4.6%
Asian American	2.6%
Hispanic	1.3%
White	91.4%

**Staffing Ratios**

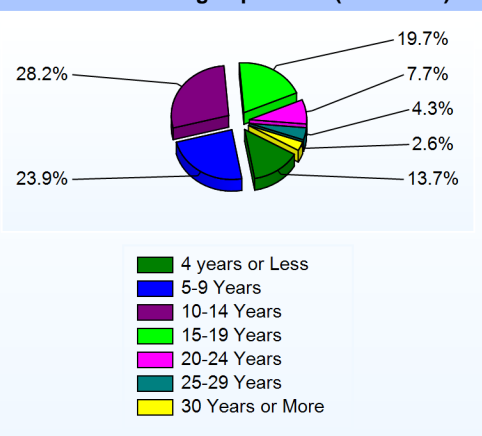
	<u>2015</u>
Students Per Teacher	17
Students Per Administrator	244
Students Per Instructional Staff	14
Students Per Pupil Support Staff	177
School Staff Per Administrator	23

**Staff Qualifications**

**Percentage of Classes Taught by Highly Qualified Teachers (2014-2015)**

	<u>Total Classes</u>	<u>% Highly Qualified</u>	<u>% Not Highly Qualified</u>
Reading/ Language Arts	31	96.8%	3.2%
Arts	30	100.0%	0.0%
Foreign Languages	31	100.0%	0.0%
Science	30	100.0%	0.0%
Mathematics	33	100.0%	0.0%
Geography	6	100.0%	0.0%
Social Studies	12	100.0%	0.0%
History	6	100.0%	0.0%
Elementary General	49	100.0%	0.0%

**Years of Teaching Experience (2014-2015)**



**Education Level**

	<u>2015</u>
Percent with Masters Degree and Above	60.3%
Percent Holding National Board for Professional Teaching Standards	1.7%

**Curriculum Highlights**

**Core Knowledge Curriculum**

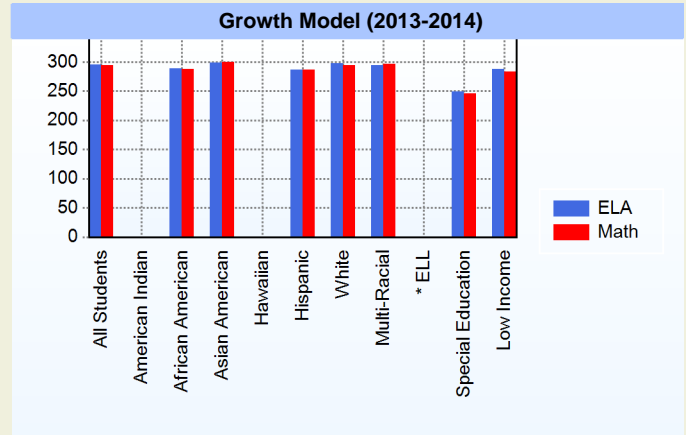
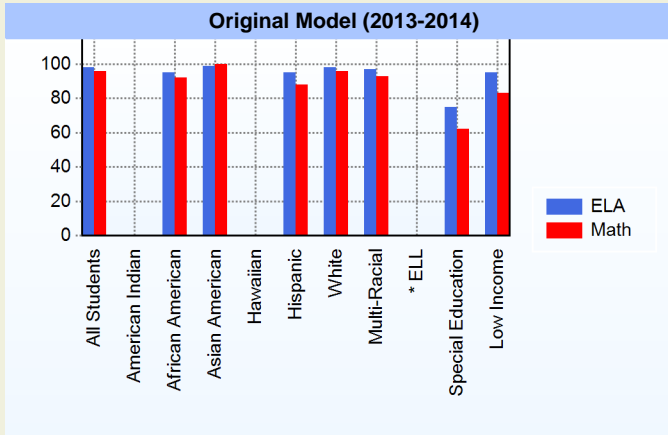
The Kindergarten through 8th grade curriculum of the Newark Charter School is a challenging combination of the Core Knowledge scope and sequence, developed by Dr. E.D. Hirsch and the Core Knowledge Foundation, and the Common Core State Standards, and the State of Delaware's Content Standards developed by Delaware teachers and the Department of Education. The Core Knowledge curriculum framework identifies specific content to be studied, and it is a logical complement to the Content Standards.

**High School Program**

At the High School level, Newark Charter School is one of only two Delaware schools to offer the Advanced Placement (AP) Capstone Diploma Program supported by the College Board. Academic and career pathway programs are provided in Computer Science, Engineering, Biotechnology, Business and Global Studies/Leadership in addition to a comprehensive program in the fine and performing arts.

**AYP**

Only groups with greater than 40 students are reported



\* English Language Learner

\* English Language Learner

**% Test Participation (2013-2014)**

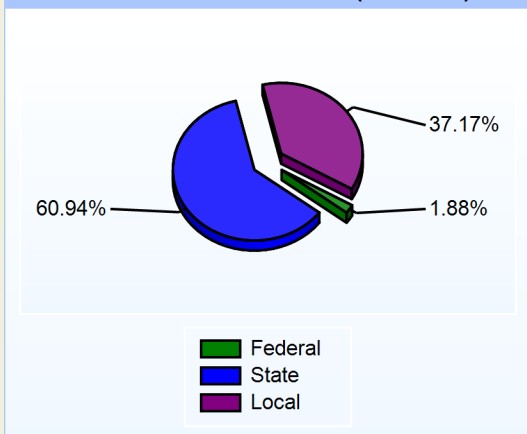
	<u>ELA</u>	<u>Math</u>	<u>ELA Goal</u>	<u>Math Goal</u>
All Students	100	100	95	95
American Indian	*	*	95	95
African American	100	100	95	95
Asian American	100	100	95	95
Hawaiian	*	*	95	95
Hispanic	100	100	95	95
White	100	100	95	95
Multi-Racial	100	100	95	95
English Language Learner	*	*	95	95
Special Education	100	100	95	95
Low Income	100	100	95	95



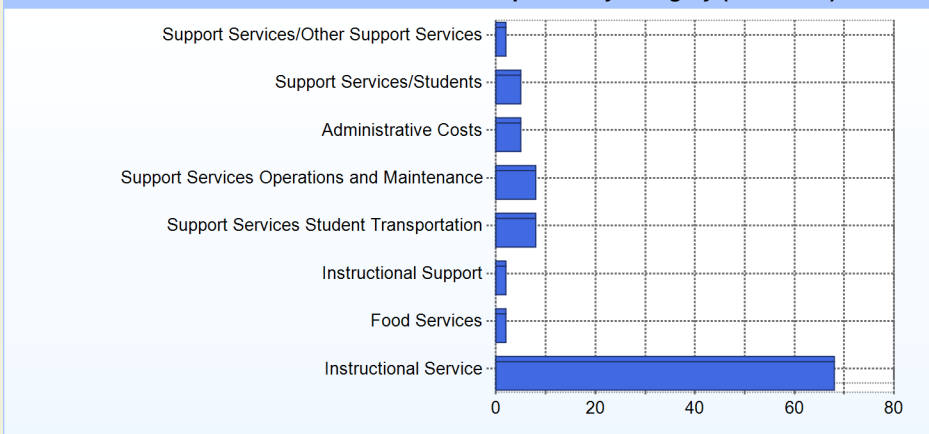
**School Finances**

District Expenditure per Pupil (2013-2014): \$10,096

**District Sources of Revenue (2013-2014)**



**Percent District Allocation of Current Expenses by Category (2013-2014)**



**School Salary Allocation**

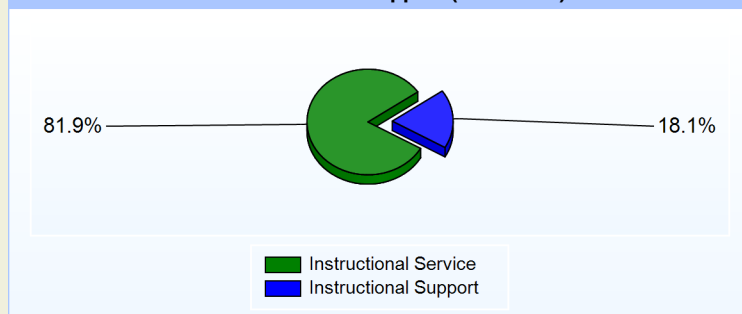
**Instructional Service**

	2015
Teachers	69.1%
Librarians	0.8%
Instructional Support	6.4%
Pupil Support	5.6%
Total	81.9%

**Instructional Support**

	2015
Administration	7.8%
Secretaries	3.8%
Food Services	0.7%
Maintenance	5.8%
Total	18.1%

**Instructional vs. Support (2014-2015)**



**For further information and detailed reports, visit**

**<http://profiles.doe.k12.de.us>**

**or contact your local school district office.**

**Glossary:** <http://profiles.doe.k12.de.us/glossary.aspx>



**Delaware Department of Education**

John G. Townsend Building  
 401 Federal Street, Suite #2  
 Dover, Delaware, 19901 - 3639  
 Phone: (302) 735-4000