

District: MOT Charter School
Address: 1156 Levels Road, Middletown DE 19709
Principal: Linda Jennings
AYP: Met

Telephone: (302) 376-5125
Web: www.motcharter.com

School Demographics

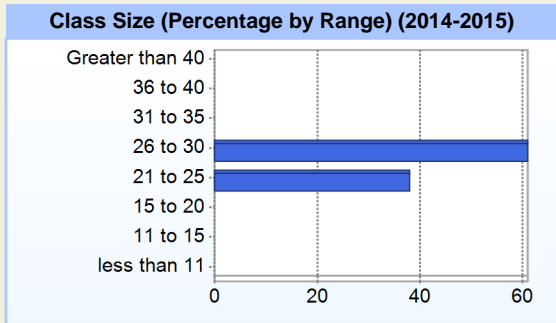
Fall Enrollment		
	2014	2015
Kindergarten	75	76
Grade 1	75	76
Grade 2	75	76
Grade 3	75	77
Grade 4	75	78
Grade 5	79	78
Grade 6	75	79
Grade 7	75	81
Grade 8	75	82
Grade 9		166
Total	679	869

Enrollment by Race/Ethnicity		
	2014	2015
African American	13.8%	18.4%
American Indian		0.1%
Asian	8.7%	9.2%
Hawaiian	0.3%	0.1%
Hispanic/Latino	6.0%	7.2%
White	71.1%	63.2%
Multi-Racial		1.7%

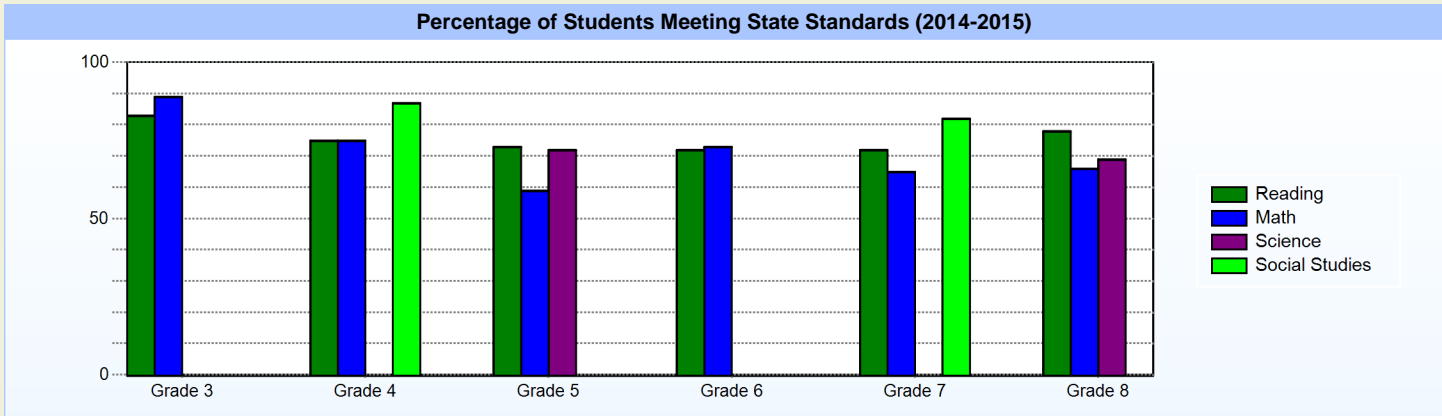
Other Student Characteristics		
	2014	2015
English Language Learner	1.3%	1.6%
Low Income	4.9%	5.9%
Special Education	5.9%	6.1%
Enrolled for Full Year	100.0%	N/A

School Promotion by Grade	
	2014
Kindergarten	100.0%
Grade 1	98.7%
Grade 2	100.0%
Grade 3	100.0%
Grade 4	100.0%
Grade 5	97.5%
Grade 6	100.0%
Grade 7	100.0%
Grade 8	100.0%

Recently Arrived ELL Students	
	2015
Number of Students Not Tested on ELA Assessment	0



Student Achievement



Exemplary Programs

Family involvement is critical to student academic success. At MOT Charter School, we provide many opportunities for families to participate in the life of the school. Parents are welcome in the school at any time. Many parents provide small group instruction to struggling and/or accelerated students. Parents volunteer as mentors, coaches, and club advisors. Our small school community allows us to host a variety of school-wide events for families. Every spring new kindergarten and new 9th grade students (and their families) participate in orientation programs to help them get a great start at MOT. In the fall, we invite parents of middle school students to a middle school orientation. We also host a parent education series to support parents as they seek to support their children. Academic nights, science fairs, math nights, and music concerts keep parents connected to our curricular programs and academic expectations as well as showcase academic growth and achievement.

Student - School Safety and Discipline

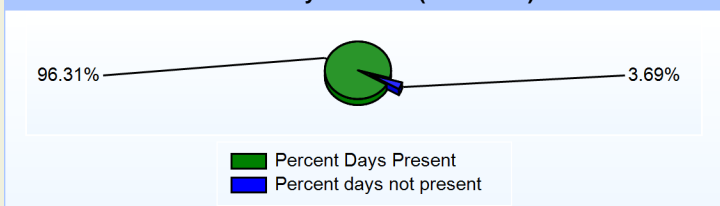
Number of Reported Offenses (2014-2015)

	<u>School</u>	<u>District</u>	<u>State</u>
School Crimes (Title 14, Delaware Code, §4112)	1	1	678
Department of Education (DOE) Offenses	15	15	10432
All School Safety Policy in Place	Yes		

Suspensions and Expulsions

	<u>2015</u>
Number of Suspensions	52
Number of Expulsions	1
Count of Students Suspended/Expelled	34
September 30 Enrollment	869
Percent of Students Suspended/Expelled	4%
District Percentage	4%
State Percentage	12%

Percent Days Present (2014-2015)



Our Staff

Number of Instructional Staff

	<u>2015</u>
Teachers	47
Instructional Support	9
Pupil Support	6
Total	62

Staff by Race/Ethnicity

	<u>2015</u>
American Indian	0.0%
African American	3.2%
Asian American	0.0%
Hispanic	3.2%
White	93.5%

Staffing Ratios

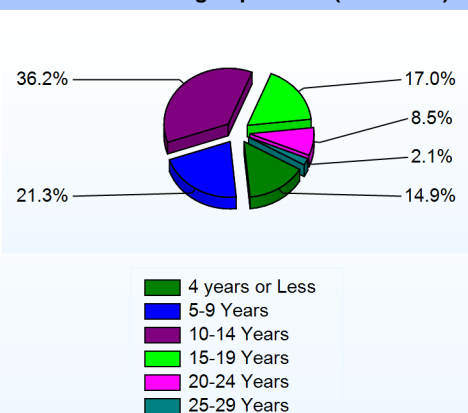
	<u>2015</u>
Students Per Teacher	19
Students Per Administrator	217
Students Per Instructional Staff	16
Students Per Pupil Support Staff	145
School Staff Per Administrator	21

Staff Qualifications

Percentage of Classes Taught by Highly Qualified Teachers (2014-2015)

	<u>Total Classes</u>	<u>% Highly Qualified</u>	<u>% Not Highly Qualified</u>
English	10	100.0%	0.0%
Reading/ Language Arts	5	100.0%	0.0%
Arts	13	100.0%	0.0%
Foreign Languages	12	100.0%	0.0%
Science	12	100.0%	0.0%
Mathematics	15	100.0%	0.0%
Social Studies	15	100.0%	0.0%
Elementary General	20	100.0%	0.0%

Years of Teaching Experience (2014-2015)



Education Level

	<u>2015</u>
Percent with Masters Degree and Above	43.5%
Percent Holding National Board for Professional Teaching Standards	0.0%

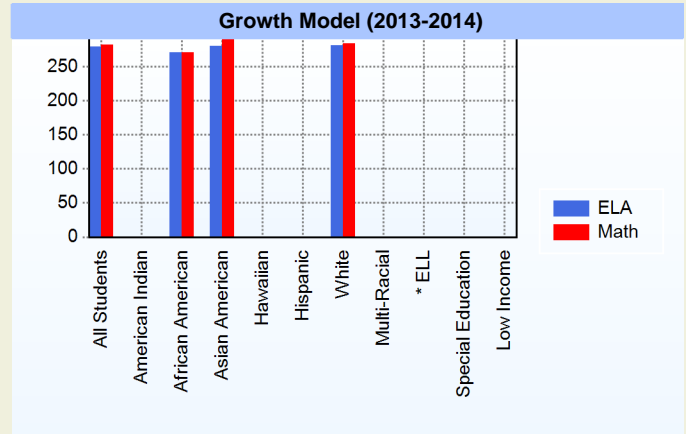
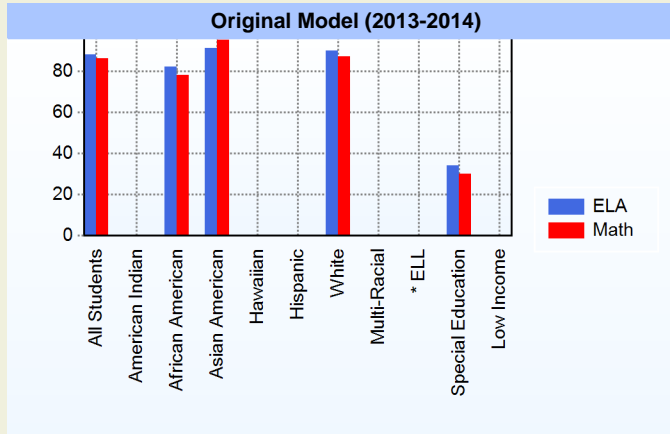
Curriculum Highlights

MOT Charter's rigorous college preparatory curriculum is designed to emphasize the development of problem solving, higher order thinking, and communication skills. In the lower school, students receive 9 years of exploratory instruction in Spanish, Art, Music, Physical Education, Computer Technology, and Wellness. Every 7th and 8th grade student also takes Business Education and a STEM career course.

MOT Charter High School is an authentic 1-to-1 technology school. The school provides each student with a tablet or laptop that serves as the primary instructional tool, utilizing e-books and an online learning platform. High school students who choose the Academy of the Arts have the option of following one of 6 pathways: Digital Communications, Dance, Instrumental Music, Vocal Music, Theater, or Visual Arts. Students who choose the Academy of Science & Technology have the option of following one of three pathways: Computer Science, Engineering, or Biotechnology.

AYP

Only groups with greater than 40 students are reported



* English Language Learner

* English Language Learner

% Test Participation (2013-2014)

	<u>ELA</u>	<u>Math</u>	<u>ELA Goal</u>	<u>Math Goal</u>
All Students	100	100	95	95
American Indian	*	*	95	95
African American	100	100	95	95
Asian American	100	100	95	95
Hawaiian	*	*	95	95
Hispanic	*	*	95	95
White	100	100	95	95
Multi-Racial	*	*	95	95
English Language Learner	*	*	95	95
Special Education	*	*	95	95
Low Income	*	*	95	95



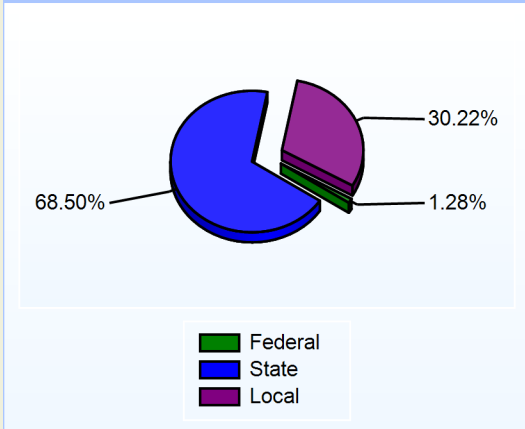
Other

MOT Charter School believes that extracurricular activities provide an opportunity for students to learn and practice leadership, teamwork, persistence, and creativity that are crucial to future success. Both the lower school and the upper school offer an extensive extracurricular program. MOT Charter School students have the opportunity to learn, grow and excel outside of the classroom in more than 40 extracurricular programs including: intramural sports, interscholastic Basketball, Cross Country, Volleyball, Soccer, Baseball, Golf, Lacrosse, and Field Hockey. In addition to athletics, students may also participate in Student Government, a variety of academic honor societies, Band, Drama, Math League, Science Olympiad, Economics Club, BPA, TSA, Odyssey of the Mind, Yearbook Club, Spirit Club, Reader's Theater, and Chess Club.

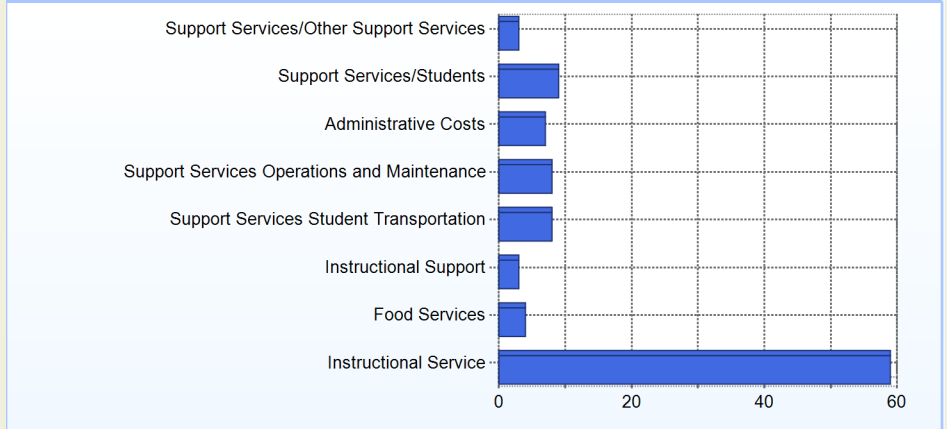
School Finances

District Expenditure per Pupil (2013-2014): \$9,292

District Sources of Revenue (2013-2014)



Percent District Allocation of Current Expenses by Category (2013-2014)

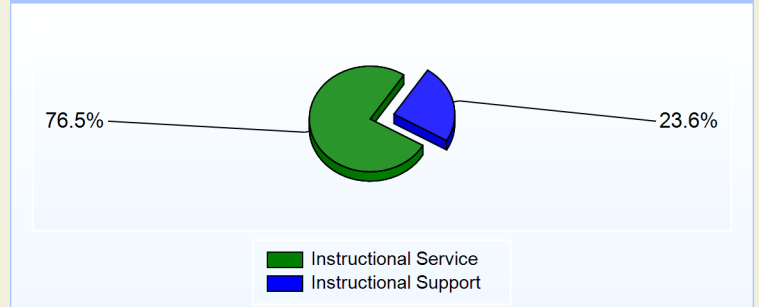


School Salary Allocation

Instructional Service	
2015	
Teachers	63.2%
Instructional Support	4.8%
Pupil Support	8.5%
Total	76.5%

Instructional Support	
2015	
Administration	10.5%
Secretaries	6.2%
Food Services	2.4%
Maintenance	4.5%
Total	23.6%

Instructional vs. Support (2014-2015)



For further information and detailed reports, visit

<http://profiles.doe.k12.de.us>

or contact your local school district office.

Glossary: <http://profiles.doe.k12.de.us/glossary.aspx>



Delaware Department of Education

John G. Townsend Building
 401 Federal Street, Suite #2
 Dover, Delaware, 19901 - 3639
 Phone: (302) 735-4000