

District: Kuumba Academy Charter School
Address: 1200 North French Street, Wilmington DE 19801
Principal: Sally Maldonado
AYP: Met

Telephone: (302) 472-6450
Web: kuumbaacademy.org

School Demographics

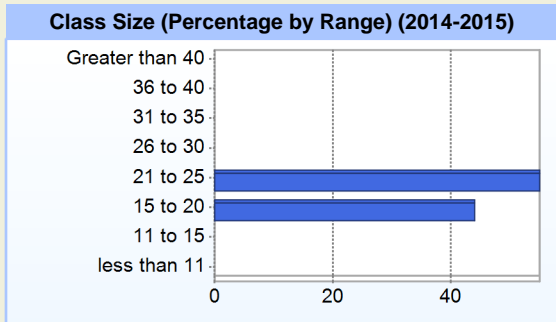
Fall Enrollment		
	2014	2015
Kindergarten	44	94
Grade 1	57	66
Grade 2	45	72
Grade 3	45	56
Grade 4	36	55
Grade 5	38	36
Grade 6	33	45
Grade 7		40
Total	298	464

Enrollment by Race/Ethnicity		
	2014	2015
African American	95.3%	91.6%
American Indian		0.4%
Asian	0.7%	0.4%
Hispanic/Latino	4.0%	6.9%
White		0.4%
Multi-Racial		0.2%

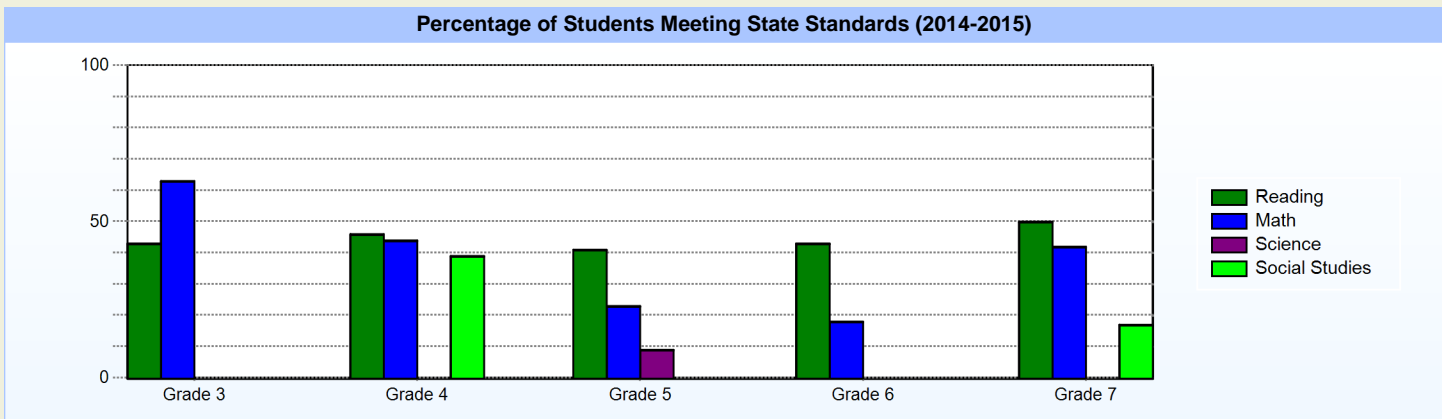
Other Student Characteristics		
	2014	2015
English Language Learner	0.7%	0.9%
Low Income	63.1%	58.0%
Special Education	5.7%	6.3%
Enrolled for Full Year	100.0%	N/A

School Promotion by Grade	
	2014
Kindergarten	97.7%
Grade 1	98.2%
Grade 2	91.1%
Grade 3	88.9%
Grade 4	97.2%
Grade 5	100.0%
Grade 6	100.0%

Recently Arrived ELL Students	
	2015
Number of Students Not Tested on ELA Assessment	0



Student Achievement



Exemplary Programs

Kuumba Academy Charter School is a tuition-free public charter school open to all students in grades K to 8. Christina Cultural Arts Center, Inc. founded Kuumba Academy Charter School in 1998 as a unique nonprofit/public school partnership based on the idea that all children can soar in school and life, given the right support.

Kuumba Academy believes that parents are a child's primary educators. In cooperation with guidance at home, Kuumba embraces cultural awareness and empowers students to achieve academic and artistic excellence. We believe that children who are at-risk for academic failure can be high achievers and change agents in low-income communities when parents and teachers engage them in a culturally relevant, community education model.

Student - School Safety and Discipline

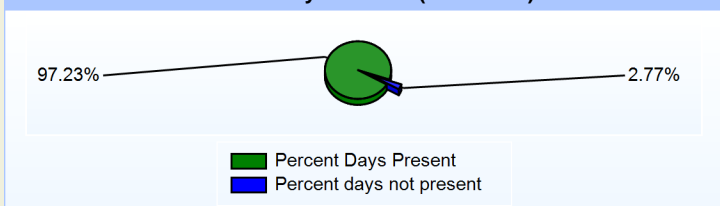
Number of Reported Offenses (2014-2015)

	<u>School</u>	<u>District</u>	<u>State</u>
School Crimes (Title 14, Delaware Code, §4112)	1	1	678
Department of Education (DOE) Offenses	36	36	10432
All School Safety Policy in Place	Yes		

Suspensions and Expulsions

	<u>2015</u>
Number of Suspensions	54
Number of Expulsions	0
Count of Students Suspended/Expelled	43
September 30 Enrollment	464
Percent of Students Suspended/Expelled	9%
District Percentage	9%
State Percentage	12%

Percent Days Present (2014-2015)



Our Staff

Number of Instructional Staff

	<u>2015</u>
Teachers	31
Librarians	1
Instructional Support	4
Pupil Support	5
Total	41

Staff by Race/Ethnicity

	<u>2015</u>
American Indian	0.0%
African American	56.1%
Asian American	2.4%
Hispanic	0.0%
White	41.5%

Staffing Ratios

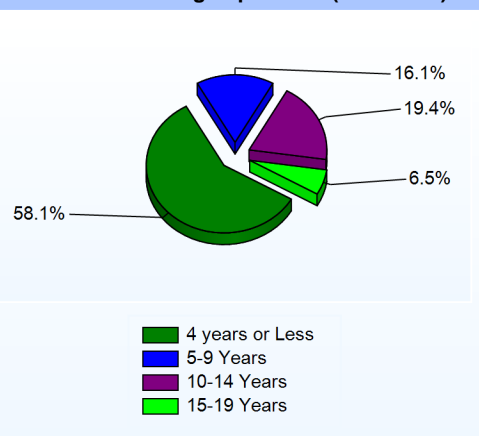
	<u>2015</u>
Students Per Teacher	15
Students Per Administrator	232
Students Per Instructional Staff	13
Students Per Pupil Support Staff	93
School Staff Per Administrator	23

Staff Qualifications

Percentage of Classes Taught by Highly Qualified Teachers (2014-2015)

	<u>Total Classes</u>	<u>% Highly Qualified</u>	<u>% Not Highly Qualified</u>
Reading/ Language Arts	10	90.0%	10.0%
Arts	2	0.0%	100.0%
Foreign Languages	2	0.0%	100.0%
Science	4	0.0%	100.0%
Mathematics	4	100.0%	0.0%
Social Studies	4	0.0%	100.0%
Elementary General	21	71.4%	28.6%

Years of Teaching Experience (2014-2015)



Education Level

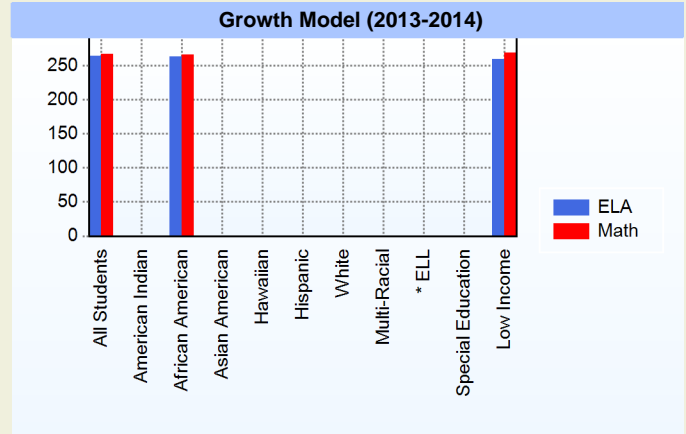
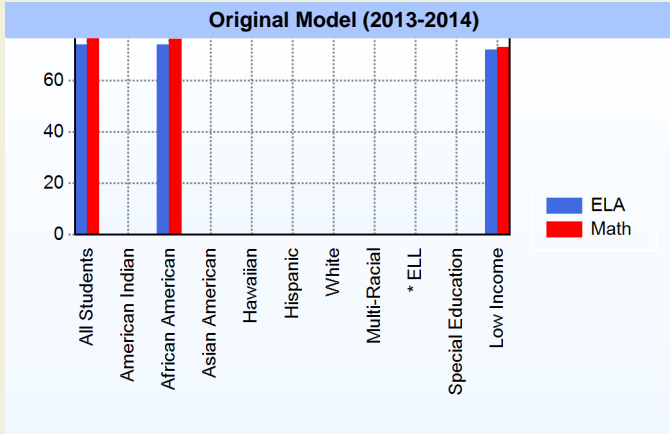
	<u>2015</u>
Percent with Masters Degree and Above	34.1%
Percent Holding National Board for Professional Teaching Standards	0.0%

Curriculum Highlights

Kuumba Academy couples rigorous academics with arts-based activities, all delivered in a safe, caring environment. Everything we do is aimed at igniting your child's passion for Reading, Math, Science, and the Creative Arts. Our challenging curriculum is based on the nationally recognized Expeditionary Learning (EL) model, which organizes student learning around a project-based, learning-by-doing approach. The EL model emphasizes student inquiry, critical thinking and real-life connections and experiences. These are proven methods for success among "high need" populations. Our model encourages academic depth over breadth, with a local context and alignment with the Common Core Standards. Our students are taught a carefully sequenced curriculum in Language Arts, Mathematics, Science, Social Studies, Physical Fitness, Spanish, Music, Theater, Dance and Visual Arts.

AYP

Only groups with greater than 40 students are reported



* English Language Learner

* English Language Learner

% Test Participation (2013-2014)

	<u>ELA</u>	<u>Math</u>	<u>ELA Goal</u>	<u>Math Goal</u>
All Students	99	100	95	95
American Indian	*	*	95	95
African American	99	100	95	95
Asian American	*	*	95	95
Hawaiian	*	*	95	95
Hispanic	*	*	95	95
White	*	*	95	95
Multi-Racial	*	*	95	95
English Language Learner	*	*	95	95
Special Education	*	*	95	95
Low Income	99	100	95	95



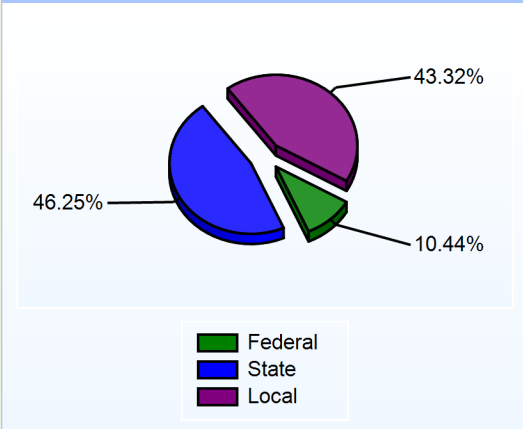
Other

Kuumba Academy excels at nurturing each student's learning style through a creative integration of academics and the arts. From its inception in 2001, Kuumba Academy has earned a reputation for success. We're a school with heart. Our hallways and classrooms are filled with professional teachers and experienced administrators who care. Passionate leadership is the key to unlocking potential at Kuumba Academy, where learning is a personal responsibility upheld by a nurturing staff. Kuumba Academy also knows that to be successful in the 21st Century, students must be skilled in the latest technology. Technical and computer skills are honed as part of our students' regular classroom instruction from kindergarten.

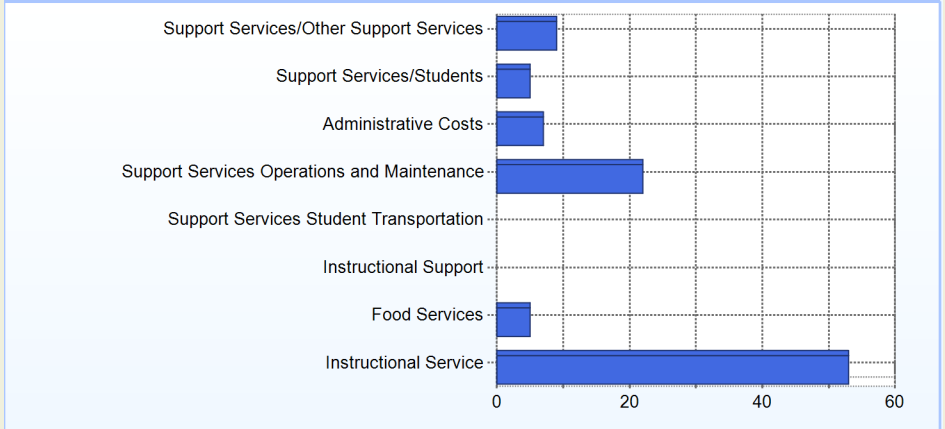
School Finances

District Expenditure per Pupil (2013-2014): \$12,141

District Sources of Revenue (2013-2014)



Percent District Allocation of Current Expenses by Category (2013-2014)

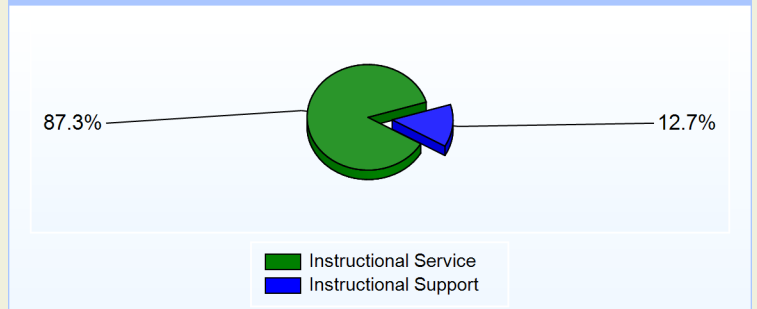


School Salary Allocation

Instructional Service	
	2015
Teachers	67.2%
Librarians	0.4%
Instructional Support	7.8%
Pupil Support	11.9%
Total	87.3%

Instructional Support	
	2015
Administration	7.6%
Secretaries	1.5%
Food Services	0.2%
Maintenance	3.4%
Total	12.7%

Instructional vs. Support (2014-2015)



For further information and detailed reports, visit

<http://profiles.doe.k12.de.us>

or contact your local school district office.

Glossary: <http://profiles.doe.k12.de.us/glossary.aspx>



Delaware Department of Education

John G. Townsend Building
401 Federal Street, Suite #2
Dover, Delaware, 19901 - 3639
Phone: (302) 735-4000