

District: Gateway Lab School
Address: 2501 Centerville Road, Wilmington DE 19808
Principal: Rebecca Brooking
AYP: Not Met

Telephone: (302) 633-4091
Web: www.gatewaylabschool.org

School Demographics

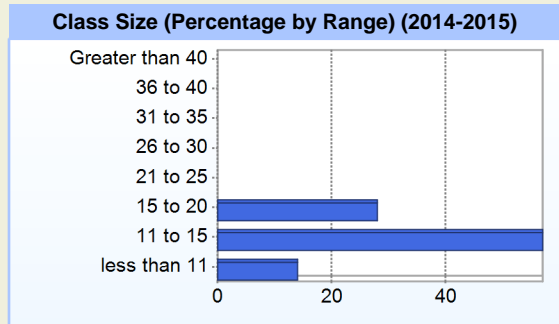
Fall Enrollment		
	2014	2015
Grade 3	21	21
Grade 4	38	32
Grade 5	40	42
Grade 6	39	43
Grade 7	38	42
Grade 8	32	32
Total	208	212

Enrollment by Race/Ethnicity		
	2014	2015
African American	26.4%	23.1%
American Indian	0.5%	
Asian	1.4%	2.4%
Hispanic/Latino	6.7%	8.0%
White	64.4%	64.6%
Multi-Racial	0.5%	1.9%

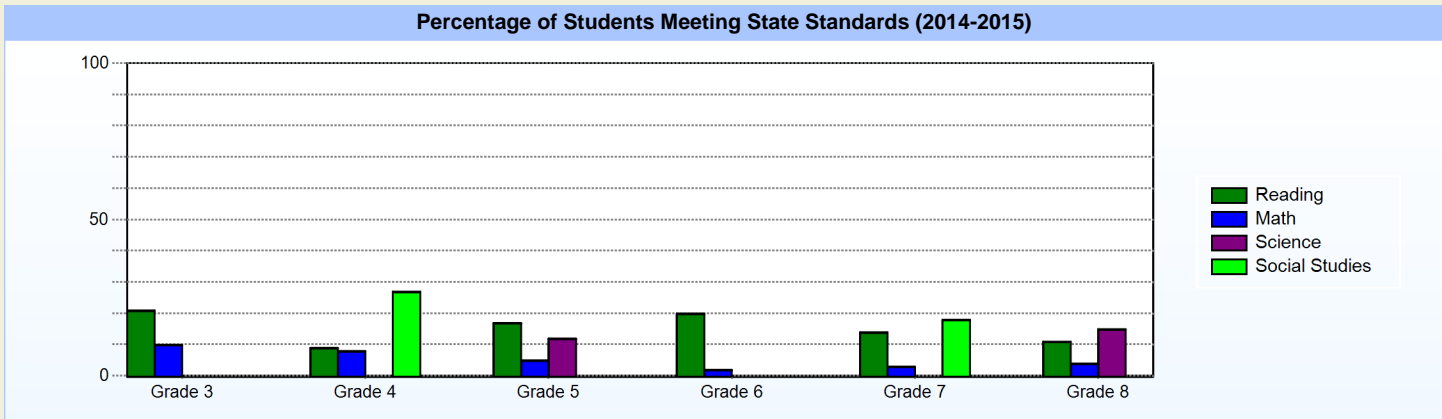
Other Student Characteristics		
	2014	2015
English Language Learner	1.0%	0.9%
Low Income	27.9%	20.8%
Special Education	58.7%	59.9%
Enrolled for Full Year	100.0%	N/A

School Promotion by Grade	
	2014
Grade 3	100.0%
Grade 4	100.0%
Grade 5	100.0%
Grade 6	100.0%
Grade 7	100.0%
Grade 8	96.9%

Recently Arrived ELL Students	
	2015
Number of Students Not Tested on ELA Assessment	0



Student Achievement



Exemplary Programs

The Gateway Lab School philosophy is based on the belief that children, who have struggled to achieve academic success in the traditional school environment and learn differently, have the capacity to achieve academic success and to realize individual learning potential. The teachers and staff of Gateway Lab School are committed to developing a sense of inquiry and love of learning in each student. This is accomplished by focusing on providing interventions in the areas of reading, oral and written language, math and motor skills. The social studies and humanities areas of study is supplemented through the Academic Club Method™ developed at the Lab School of Washington®, which provides a unique program that incorporates art, music, drama and hands-on learning experiences.

Student - School Safety and Discipline

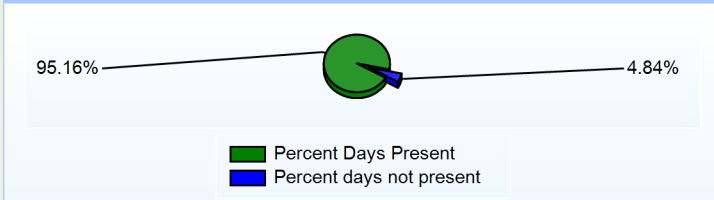
Number of Reported Offenses (2014-2015)

	<u>School</u>	<u>District</u>	<u>State</u>
School Crimes (Title 14, Delaware Code, §4112)	5	5	678
Department of Education (DOE) Offenses	74	74	10432
All School Safety Policy in Place	N/A		

Suspensions and Expulsions

	<u>2015</u>
Number of Suspensions	28
Number of Expulsions	0
Count of Students Suspended/Expelled	18
September 30 Enrollment	212
Percent of Students Suspended/Expelled	8%
District Percentage	8%
State Percentage	12%

Percent Days Present (2014-2015)



Our Staff

Number of Instructional Staff	
	<u>2015</u>
Teachers	20
Instructional Support	7
Pupil Support	4
Total	31

Staff by Race/Ethnicity	
	<u>2015</u>
American Indian	0.0%
African American	19.4%
Asian American	0.0%
Hispanic	0.0%
White	80.6%

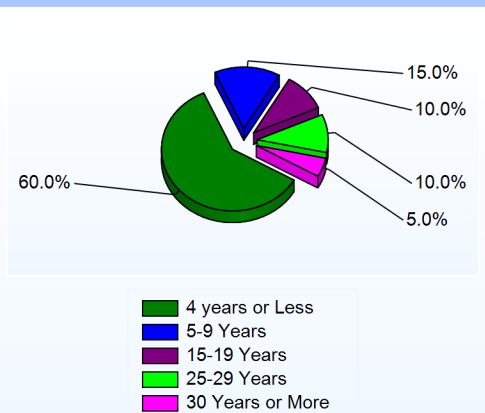
Staffing Ratios	
	<u>2015</u>
Students Per Teacher	11
Students Per Administrator	212
Students Per Instructional Staff	8
Students Per Pupil Support Staff	53
School Staff Per Administrator	36

Staff Qualifications

Percentage of Classes Taught by Highly Qualified Teachers (2014-2015)

	<u>Total Classes</u>	<u>% Highly Qualified</u>	<u>% Not Highly Qualified</u>
English	3	100.0%	0.0%
Arts	10	100.0%	0.0%
Science	6	100.0%	0.0%
Mathematics	10	100.0%	0.0%
Social Studies	6	0.0%	100.0%
Elementary General	8	100.0%	0.0%

Years of Teaching Experience (2014-2015)

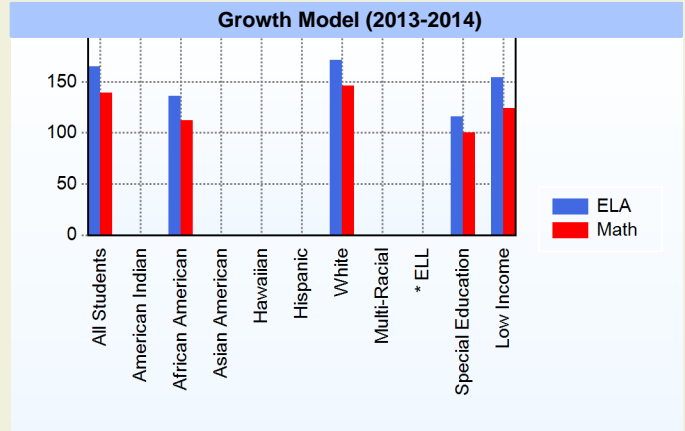
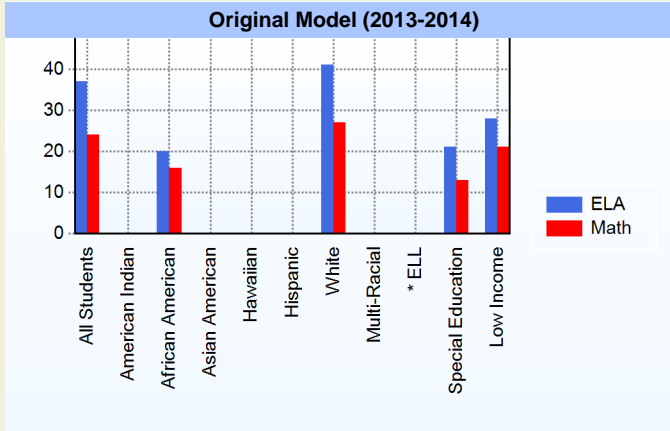


Education Level

	<u>2015</u>
Percent with Masters Degree and Above	45.2%
Percent Holding National Board for Professional Teaching Standards	0.0%

AYP

Only groups with greater than 40 students are reported



* English Language Learner

* English Language Learner

% Test Participation (2013-2014)

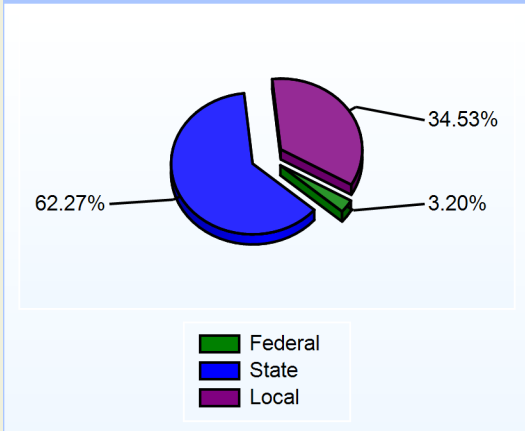
	ELA	Math	ELA Goal	Math Goal
All Students	95	100	95	95
American Indian	*	*	95	95
African American	91	100	95	95
Asian American	*	*	95	95
Hawaiian	*	*	95	95
Hispanic	*	*	95	95
White	95	100	95	95
Multi-Racial	*	*	95	95
English Language Learner	*	*	95	95
Special Education	90	100	95	95
Low Income	90	100	95	95



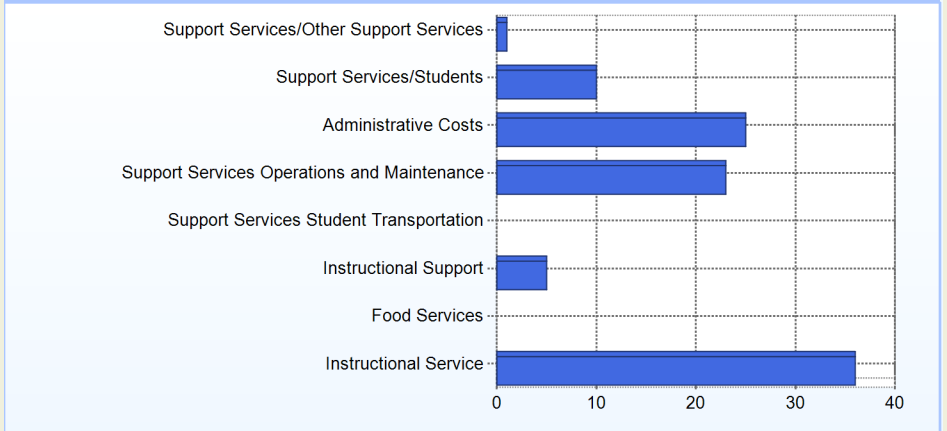
School Finances

District Expenditure per Pupil (2013-2014): \$19,636

District Sources of Revenue (2013-2014)



Percent District Allocation of Current Expenses by Category (2013-2014)

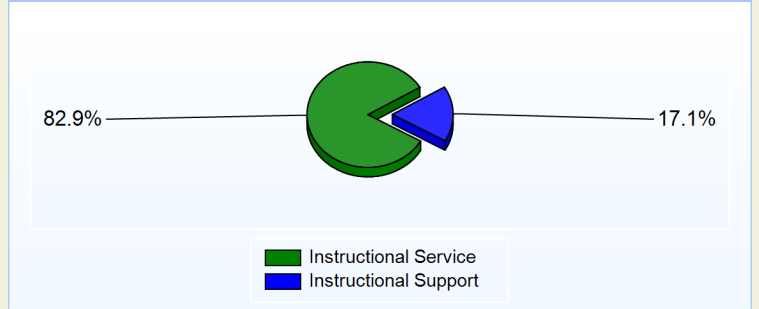


School Salary Allocation

Instructional Service	
2015	
Teachers	57.0%
Instructional Support	10.2%
Pupil Support	15.7%
Total	82.9%

Instructional Support	
2015	
Administration	5.2%
Secretaries	8.2%
Food Services	1.3%
Maintenance	2.4%
Total	17.1%

Instructional vs. Support (2014-2015)



For further information and detailed reports, visit

<http://profiles.doe.k12.de.us>

or contact your local school district office.

Glossary: <http://profiles.doe.k12.de.us/glossary.aspx>



Delaware Department of Education

John G. Townsend Building
 401 Federal Street, Suite #2
 Dover, Delaware, 19901 - 3639
 Phone: (302) 735-4000