

District: First State Montessori Academy
Address: 1000 North French Street, Wilmington DE 19801
Principal: Courtney Fox
AYP: Not Applicable

Telephone: (302) 576-1500
Web: firststatemontessori.org/

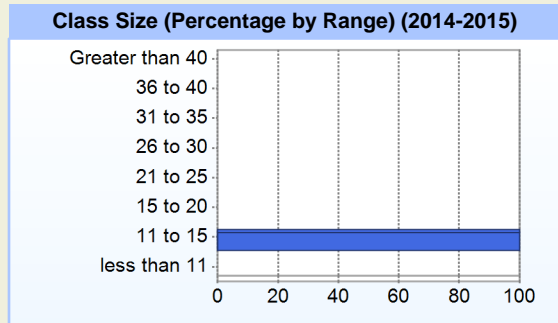
School Demographics

Fall Enrollment	
	2015
Kindergarten	50
Grade 1	49
Grade 2	50
Grade 3	53
Grade 4	37
Grade 5	28
Grade 6	13
Total	280

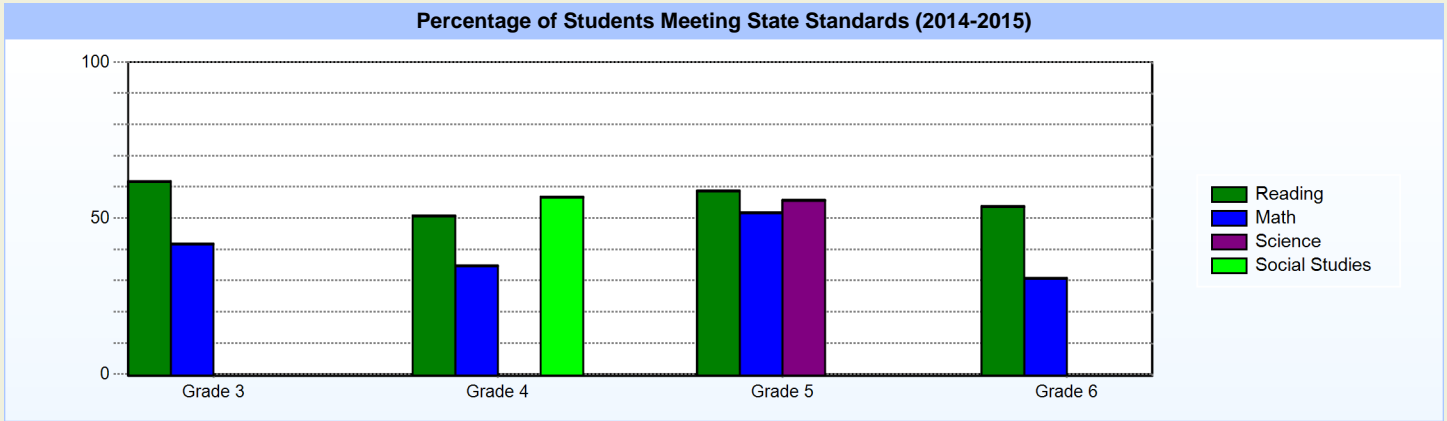
Enrollment by Race/Ethnicity	
	2015
African American	22.1%
American Indian	0.7%
Asian	6.1%
Hawaiian	1.1%
Hispanic/Latino	8.6%
White	61.1%
Multi-Racial	0.4%

Other Student Characteristics	
	2015
English Language Learner	1.8%
Low Income	10.0%
Special Education	5.4%
Enrolled for Full Year	N/A

Recently Arrived ELL Students	
	2015
Number of Students Not Tested on ELA Assessment	0



Student Achievement



Exemplary Programs

Montessori education is recognized as the education of the future and is itself an exemplary curriculum model. While it is not a set program, it is an education that fosters children's creativity, innovation, self-efficacy, and provides a strong academic foundation. First State Montessori Academy provides parents and children with an authentic, time-tested, Montessori education in a public school. It's curriculum and programs are designed to improve student learning, allow for greater choice for parents, and serve as a model for alternative approaches to education by providing a proven and innovative teaching and learning environment.

Along with a Montessori education, First State Montessori Academy utilizes the Responsive Classroom approach to teaching and learning. This approach helps create learning environments where children thrive academically, socially and emotionally with a focus on building a caring community for learning.

Student - School Safety and Discipline

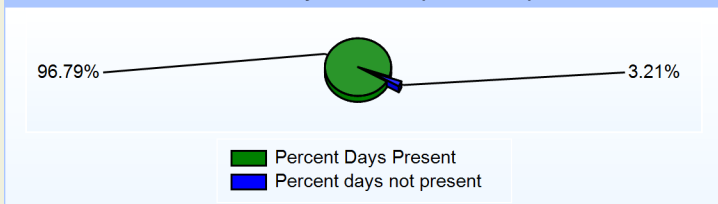
Number of Reported Offenses (2014-2015)

	<u>School</u>	<u>District</u>	<u>State</u>
School Crimes (Title 14, Delaware Code, §4112)	0	0	678
Department of Education (DOE) Offenses	16	16	10432
All School Safety Policy in Place	N/A		

Suspensions and Expulsions

	<u>2015</u>
Number of Suspensions	21
Number of Expulsions	0
Count of Students Suspended/Expelled	15
September 30 Enrollment	280
Percent of Students Suspended/Expelled	5%
District Percentage	5%
State Percentage	12%

Percent Days Present (2014-2015)



Our Staff

Number of Instructional Staff

	<u>2015</u>
Teachers	3
Instructional Support	2
Pupil Support	1
Total	6

Staff by Race/Ethnicity

	<u>2015</u>
American Indian	0.0%
African American	0.0%
Asian American	0.0%
Hispanic	0.0%
White	100.0%

Staffing Ratios

	<u>2015</u>
Students Per Teacher	93
Students Per Administrator	280
Students Per Instructional Staff	58
Students Per Pupil Support Staff	280
School Staff Per Administrator	6

Staff Qualifications

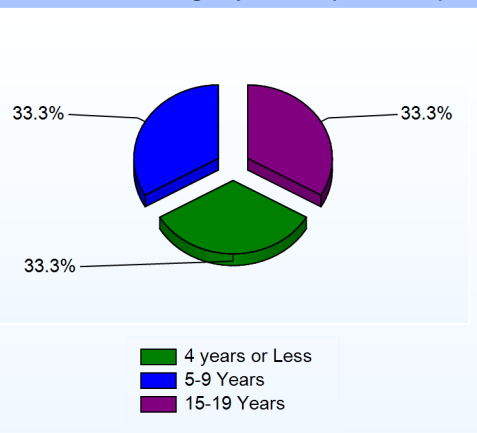
Percentage of Classes Taught by Highly Qualified Teachers (2014-2015)

	<u>Total Classes</u>	<u>% Highly Qualified</u>	<u>% Not Highly Qualified</u>
Arts	2	50.0%	50.0%
Elementary General	12	83.3%	16.7%

Education Level

	<u>2015</u>
Percent with Masters Degree and Above	50.0%

Years of Teaching Experience (2014-2015)



Curriculum Highlights

True to the Montessori method, the curriculum at FSMA will meet each child's individual needs and will support self-directed learning.

A focus on big ideas and essential questions with extended work periods that allow for depth of understanding and development of habits of mind.

Hands-on interactive curricular materials and classroom environment that supports children developing from concrete to abstract thinking

Academic development supported by an emphasis on the social/emotional development of the child within a multi-age community of learners.

Collaborative learning and community service leading to mutual respect of others and the development of the child's global perspective.

Child centered, inclusive learning environments utilize differentiated instruction and flexible grouping to meet the individual learning needs of each child.

Classroom-based assessment and observation informs instructional decision making.

(-1-)

ELA

Math

ELA Goal

Math Goal



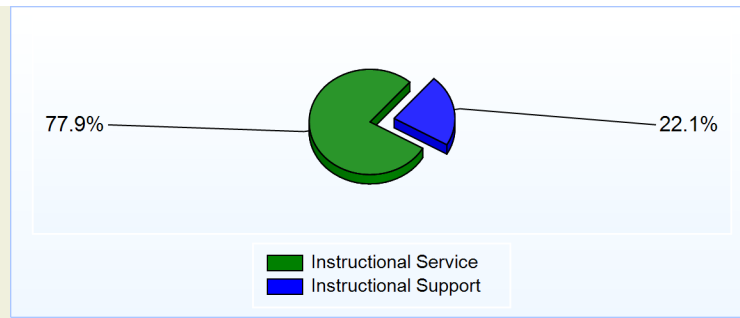
School Salary Allocation

Instructional Service	
<u>2015</u>	
Teachers	31.0%
Instructional Support	28.8%
Pupil Support	18.1%

Instructional Support	
<u>2015</u>	
Administration	22.1%
Total	22.1%

Instructional vs. Support (2014-2015)

Total 77.9%



For further information and detailed reports, visit

<http://profiles.doe.k12.de.us>

or contact your local school district office.

Glossary: <http://profiles.doe.k12.de.us/glossary.aspx>



Delaware Department of Education

John G. Townsend Building
401 Federal Street, Suite #2
Dover, Delaware, 19901 - 3639
Phone: (302) 735-4000