

District: Delaware Academy of Public Safety and Security
Address: 801 North DuPont Highway, New Castle DE 19720
Principal: Sandra Wilson-Hypes
AYP: Met

Telephone: (302) 322-6050
Web: www.dapsscharterschool.org

School Demographics

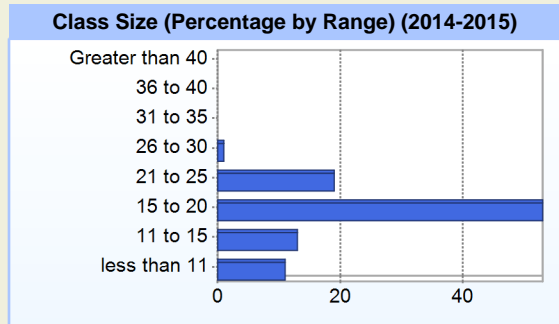
Fall Enrollment		
	2014	2015
Grade 9	147	105
Grade 10	97	104
Grade 11	86	75
Grade 12		79
Total	330	363

Enrollment by Race/Ethnicity		
	2014	2015
African American	26.7%	29.8%
American Indian	0.6%	
Asian	2.1%	3.3%
Hawaiian		0.3%
Hispanic/Latino	12.7%	14.9%
White	57.9%	51.8%

Other Student Characteristics		
	2014	2015
English Language Learner	3.9%	3.3%
Low Income	29.4%	27.0%
Special Education	13.3%	16.5%
Enrolled for Full Year	100.0%	N/A

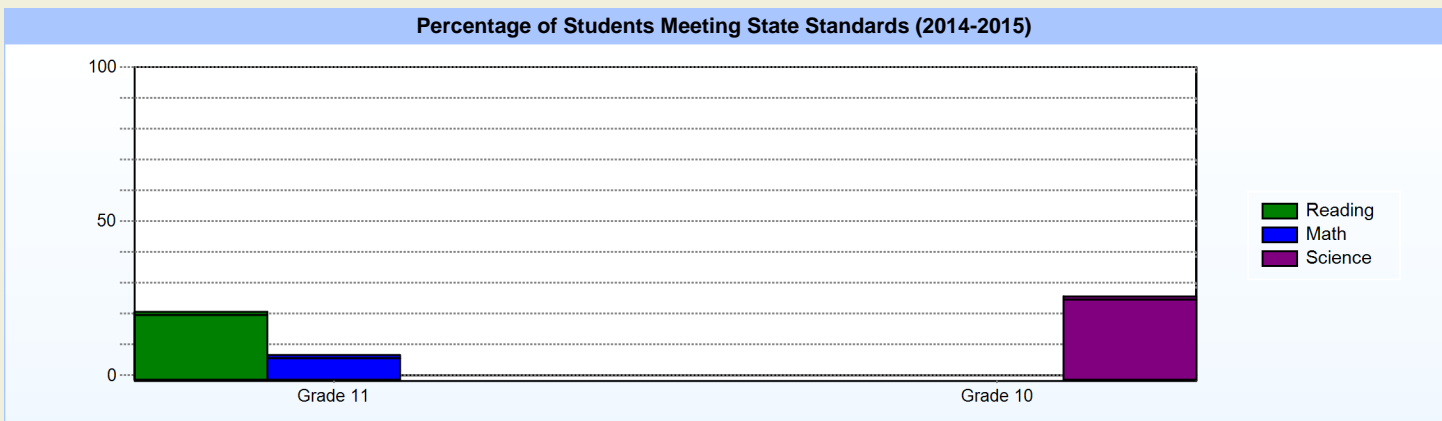
Recently Arrived ELL Students	
	2015
Number of Students Not Tested on ELA Assessment	0

School Promotion by Grade	
	2014
Grade 9	77.6%
Grade 10	84.5%
Grade 11	95.3%



Student Achievement

SAT: Average Scores for the Class of (2013-2014)				
	School	District	State	National
Math	423	423	438	513
Critical Reading	423	423	430	497
Writing	420	420	423	487
Total	1,266	1,266	1,291	1,497



Exemplary Programs

The Delaware Academy of Public Safety and Security (DAPSS) is a charter high school dedicated to providing a rigorous academic curriculum that meets State of Delaware standards as well as providing cadets practical career training in the public safety field.

As a model of excellence in the public safety field, DAPSS will strive to earn the respect of the community. DAPSS will develop disciplined and responsive individuals that will become the trusted and preferred choice of public safety organizations and/or post-secondary institutions. DAPSS graduates will exhibit the core values of fidelity to others, diligence to succeed, and scholarship in the classroom.

Student - School Safety and Discipline

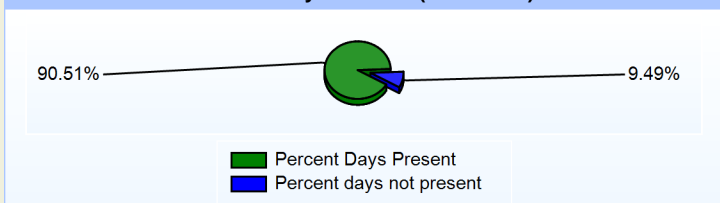
Number of Reported Offenses (2014-2015)

	<u>School</u>	<u>District</u>	<u>State</u>
School Crimes (Title 14, Delaware Code, §4112)	3	3	678
Department of Education (DOE) Offenses	3	3	10432
All School Safety Policy in Place	N/A		

Suspensions and Expulsions

	<u>2015</u>
Number of Suspensions	62
Number of Expulsions	1
Count of Students Suspended/Expelled	58
September 30 Enrollment	363
Percent of Students Suspended/Expelled	16%
District Percentage	16%
State Percentage	12%

Percent Days Present (2014-2015)



Our Staff

Number of Instructional Staff

	<u>2015</u>
Teachers	33
Instructional Support	2
Pupil Support	1
Total	36

Staff by Race/Ethnicity

	<u>2015</u>
American Indian	0.0%
African American	22.2%
Asian American	0.0%
Hispanic	8.3%
White	69.4%

Staffing Ratios

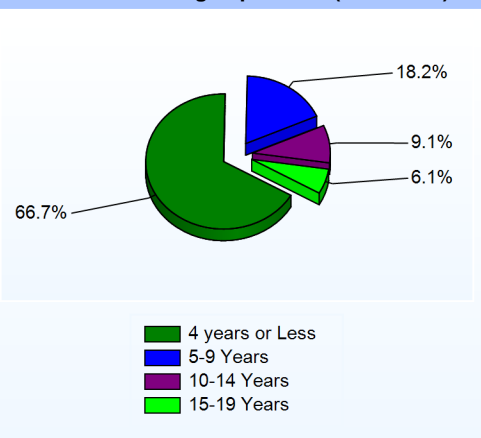
	<u>2015</u>
Students Per Teacher	11
Students Per Administrator	91
Students Per Instructional Staff	10
Students Per Pupil Support Staff	363
School Staff Per Administrator	12

Staff Qualifications

Percentage of Classes Taught by Highly Qualified Teachers (2014-2015)

	<u>Total Classes</u>	<u>% Highly Qualified</u>	<u>% Not Highly Qualified</u>
English	21	100.0%	0.0%
Foreign Languages	22	81.8%	18.2%
Science	29	93.1%	6.9%
Mathematics	21	42.9%	57.1%
Geography	6	100.0%	0.0%
Civics & Government	6	100.0%	0.0%
Social Studies	4	100.0%	0.0%
History	10	100.0%	0.0%

Years of Teaching Experience (2014-2015)



Education Level

	<u>2015</u>
Percent with Masters Degree and Above	33.3%
Percent Holding National Board for Professional Teaching Standards	0.0%

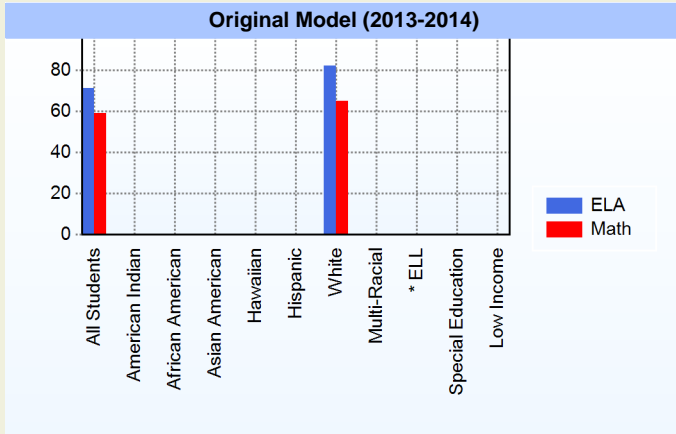
Graduation Rate - ESEA 4 Year Adjusted

	2014
	ESEA
All Students	0.0%
African American	0.0%
White	0.0%
Special Education	0.0%
Low Income	0.0%

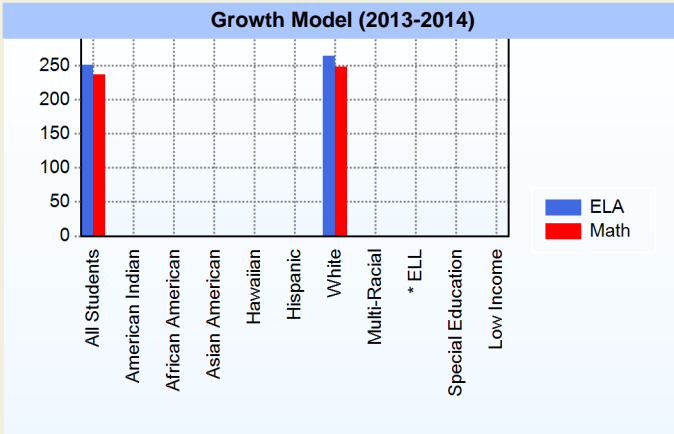
AYP

Only groups with greater than 40 students are reported

Original Model (2013-2014)



Growth Model (2013-2014)



* English Language Learner

* English Language Learner

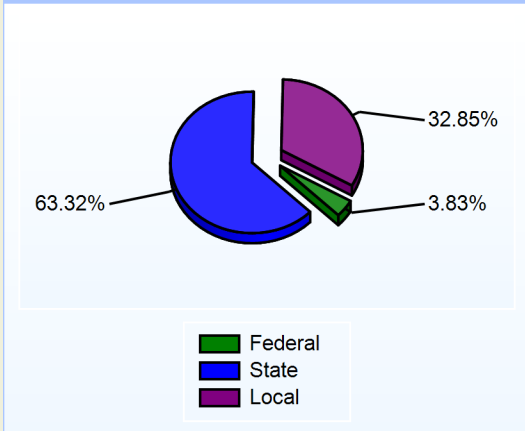
% Test Participation (2013-2014)

	ELA	Math	ELA Goal	Math Goal
All Students	100	100	95	95
American Indian	*	*	95	95
African American	*	*	95	95
Asian American	*	*	95	95
Hawaiian	*	*	95	95
Hispanic	*	*	95	95
White	100	100	95	95
Multi-Racial	*	*	95	95
English Language Learner	*	*	95	95
Special Education	*	*	95	95
Low Income	*	*	95	95

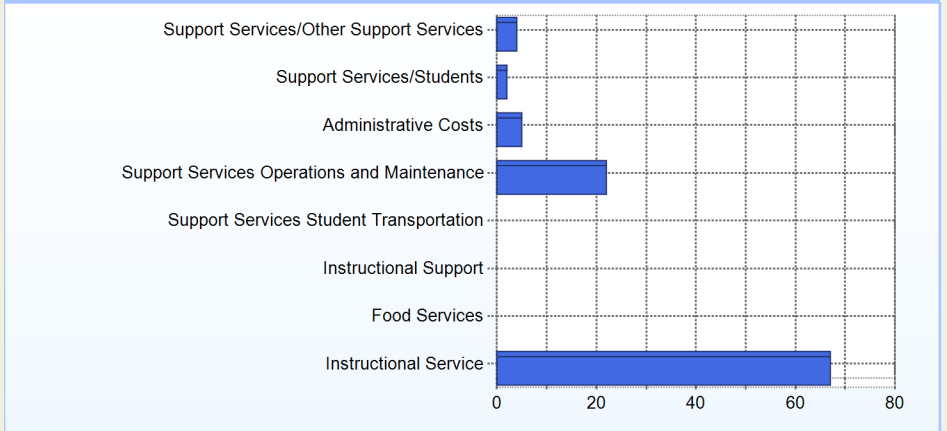
School Finances

District Expenditure per Pupil (2013-2014): \$11,306

District Sources of Revenue (2013-2014)



Percent District Allocation of Current Expenses by Category (2013-2014)

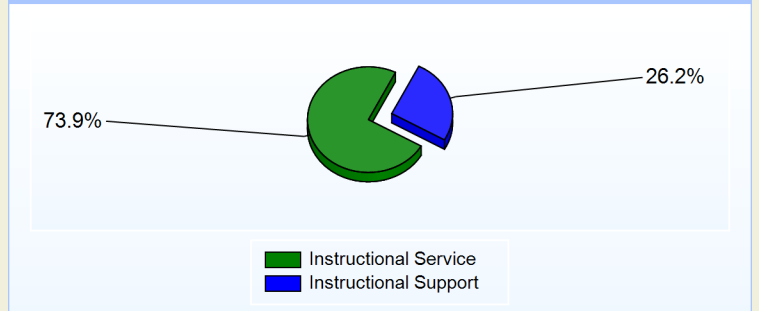


School Salary Allocation

Instructional Service	
2015	
Teachers	68.6%
Instructional Support	2.9%
Pupil Support	2.4%
Total	73.9%

Instructional Support	
2015	
Administration	15.1%
Secretaries	7.3%
Food Services	1.9%
Maintenance	1.9%
Total	26.2%

Instructional vs. Support (2014-2015)



For further information and detailed reports, visit

<http://profiles.doe.k12.de.us>

or contact your local school district office.

Glossary: <http://profiles.doe.k12.de.us/glossary.aspx>



Delaware Department of Education

John G. Townsend Building
401 Federal Street, Suite #2
Dover, Delaware, 19901 - 3639
Phone: (302) 735-4000