

District: Family Foundations Academy
Address: 170 Lukens Drive, New Castle DE 19720
Principal: Rachel Valentin
AYP: Met

Telephone: (302) 324-8901
Web: www.familyfoundationsacademy.org/

School Demographics

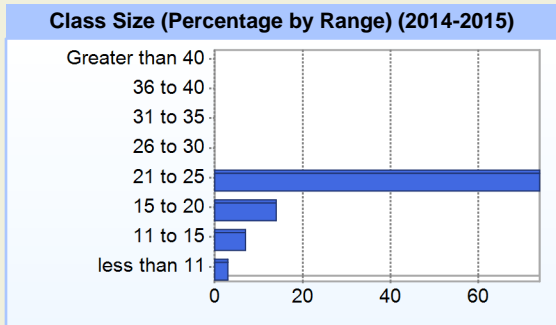
Fall Enrollment		
	2014	2015
Kindergarten	137	118
Grade 1	123	122
Grade 2	102	112
Grade 3	94	93
Grade 4	74	84
Grade 5	76	53
Grade 6	61	91
Grade 7	83	60
Grade 8	75	78
Total	825	811

Enrollment by Race/Ethnicity		
	2014	2015
African American	77.5%	79.9%
American Indian	0.5%	0.6%
Asian	1.3%	1.5%
Hawaiian	0.4%	1.4%
Hispanic/Latino	16.2%	12.5%
White	4.1%	4.1%
Multi-Racial		0.1%

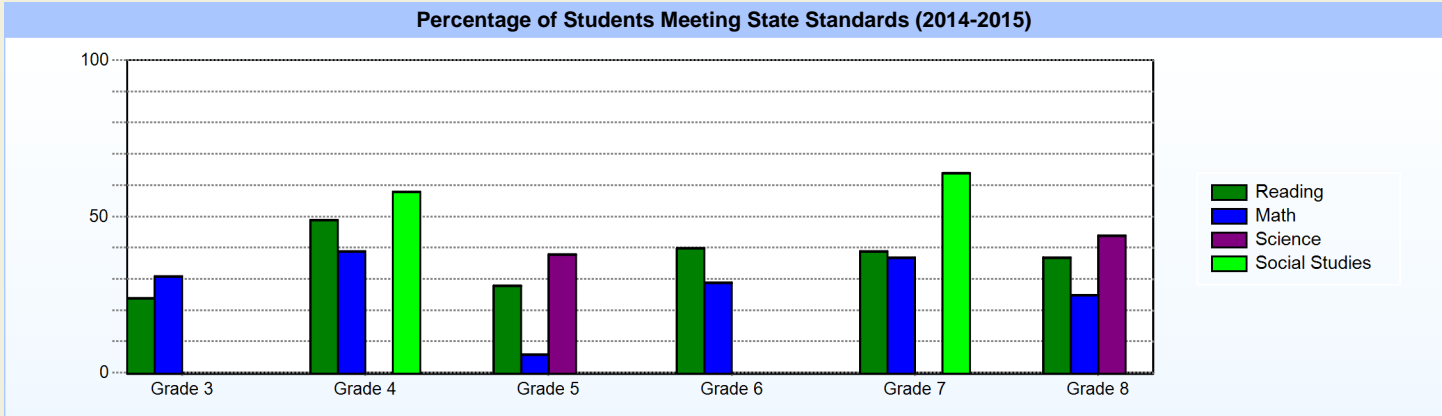
Other Student Characteristics		
	2014	2015
English Language Learner	1.9%	1.8%
Low Income	49.9%	44.4%
Special Education	5.9%	5.3%
Enrolled for Full Year	100.0%	N/A

School Promotion by Grade	
	2014
Kindergarten	93.4%
Grade 1	97.6%
Grade 2	98.0%
Grade 3	97.9%
Grade 4	97.3%
Grade 5	98.7%
Grade 6	96.7%
Grade 7	100.0%
Grade 8	98.7%

Recently Arrived ELL Students	
	2015
Number of Students Not Tested on ELA Assessment	0



Student Achievement



Exemplary Programs

Family Foundations Academy Charter School is a K-8 institution serving more than 800 students. We are dedicated to acknowledging the learning differences of each individual child and nurturing the uniqueness of each family structure. We offer rigorous instruction directly aligned to the Common Core State Standards. One of our distinctive features is a targeted focus on reading, math and character development. Within our daily structure, we have created routine systems which allow additional instructional time in these focus areas. Additionally, we have two counselors who monitor and oversee the social and emotional needs of all students. We are committed to ensuring that students receive both the academic and personal skills needed to be college and career ready.

We believe that the key to success is establishing clear systems and routines. From arrival to dismissal, students are expected to maintain the expectations of a structured environment that guides them from one componen

Student - School Safety and Discipline

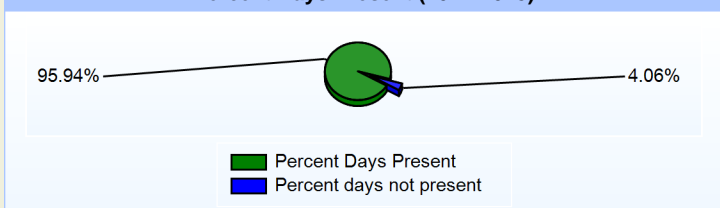
Number of Reported Offenses (2014-2015)

	<u>School</u>	<u>District</u>	<u>State</u>
School Crimes (Title 14, Delaware Code, §4112)	1	1	678
Department of Education (DOE) Offenses	91	91	10432
All School Safety Policy in Place	Yes		

Suspensions and Expulsions

	<u>2015</u>
Number of Suspensions	159
Number of Expulsions	0
Count of Students Suspended/Expelled	85
September 30 Enrollment	811
Percent of Students Suspended/Expelled	10%
District Percentage	10%
State Percentage	12%

Percent Days Present (2014-2015)



Our Staff

Number of Instructional Staff

	<u>2015</u>
Teachers	50
Instructional Support	1
Pupil Support	14
Total	65

Staff by Race/Ethnicity

	<u>2015</u>
American Indian	0.0%
African American	52.3%
Asian American	1.5%
Hispanic	3.1%
White	43.1%

Staffing Ratios

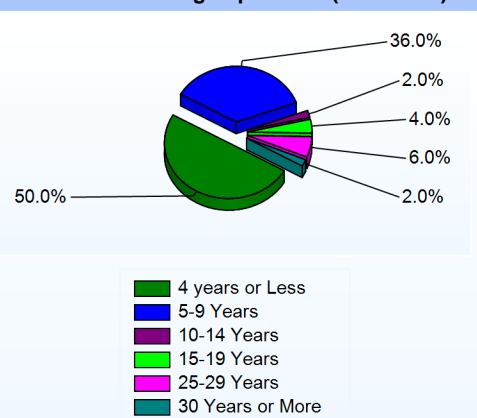
	<u>2015</u>
Students Per Teacher	16
Students Per Administrator	135
Students Per Instructional Staff	16
Students Per Pupil Support Staff	58
School Staff Per Administrator	13

Staff Qualifications

Percentage of Classes Taught by Highly Qualified Teachers (2014-2015)

	<u>Total Classes</u>	<u>% Highly Qualified</u>	<u>% Not Highly Qualified</u>
English	4	100.0%	0.0%
Arts	2	100.0%	0.0%
Foreign Languages	10	100.0%	0.0%
Science	12	100.0%	0.0%
Mathematics	12	100.0%	0.0%
Social Studies	8	100.0%	0.0%
Elementary General	28	71.4%	28.6%

Years of Teaching Experience (2014-2015)



Education Level

	<u>2015</u>
Percent with Masters Degree and Above	27.7%
Percent Holding National Board for Professional Teaching Standards	2.0%

Curriculum Highlights

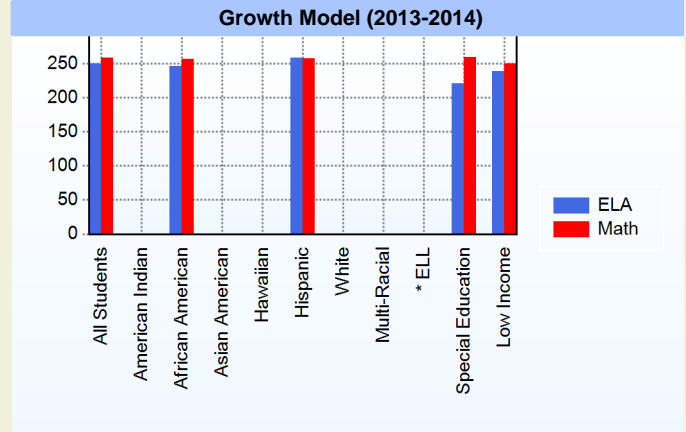
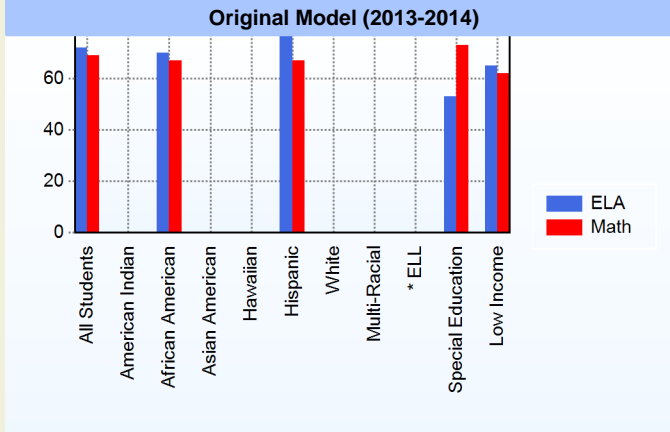
As we prepare our students for success in high school and college, we have a very student-centered curriculum that is aligned to the Common Core Standards. Our teachers use the EngageNY curriculum for grades K-5 for math and K-8 for reading. SpringBoard Math is used for grades 6-8.

We also have the following extracurricular activities:

Monarch Cheerleaders (state champions), National Elementary and Junior Honor Society, Student Council, BPA (Business Professionals of America), LeadAmerica (leadership workshop for students attended at ivy league colleges and universities), Boy Scouts, National Handwriting Champions (recognized by President Obama), Honors Programs (grades 3-8 for all subjects ELA, Math, Science, and Social Studies), Brainchild (on-line learning environment for practice and application), Character Counts (positive school climate program based on Six Pillars of character; Trustworthiness, Respect, Responsibility, Fairness, Caring, and Citizenship).

AYP

Only groups with greater than 40 students are reported



* English Language Learner

* English Language Learner

% Test Participation (2013-2014)

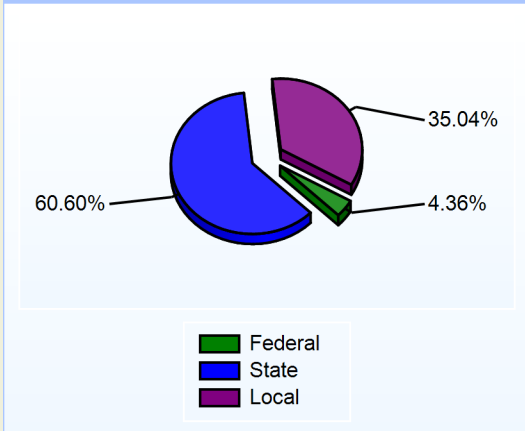
	<u>ELA</u>	<u>Math</u>	<u>ELA Goal</u>	<u>Math Goal</u>
All Students	100	100	95	95
American Indian	*	*	95	95
African American	100	100	95	95
Asian American	*	*	95	95
Hawaiian	*	*	95	95
Hispanic	97	100	95	95
White	*	*	95	95
Multi-Racial	*	*	95	95
English Language Learner	*	*	95	95
Special Education	97	100	95	95
Low Income	99	100	95	95



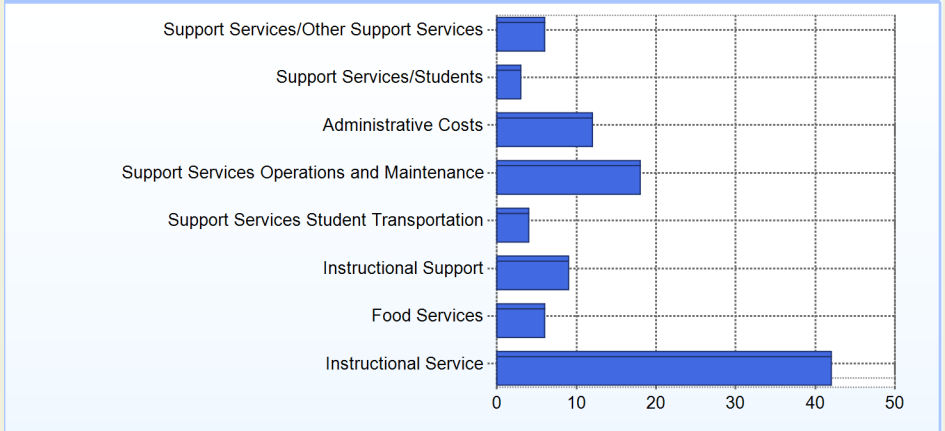
School Finances

District Expenditure per Pupil (2013-2014): \$10,192

District Sources of Revenue (2013-2014)



Percent District Allocation of Current Expenses by Category (2013-2014)

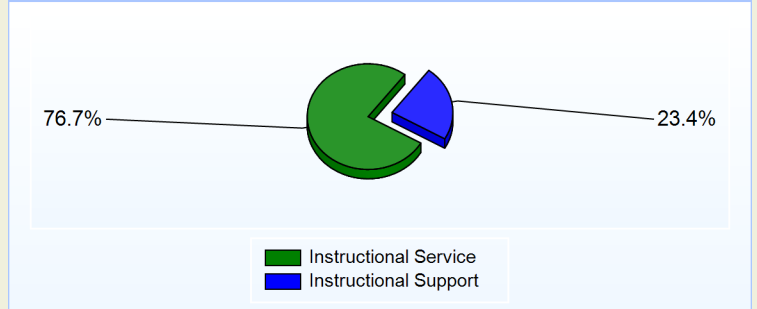


School Salary Allocation

Instructional Service	
2015	
Teachers	58.9%
Instructional Support	1.0%
Pupil Support	16.8%
Total	76.7%

Instructional Support	
2015	
Administration	13.4%
Secretaries	1.8%
Food Services	2.9%
Maintenance	5.3%
Total	23.4%

Instructional vs. Support (2014-2015)



For further information and detailed reports, visit

<http://profiles.doe.k12.de.us>

or contact your local school district office.

Glossary: <http://profiles.doe.k12.de.us/glossary.aspx>



Delaware Department of Education

John G. Townsend Building
 401 Federal Street, Suite #2
 Dover, Delaware, 19901 - 3639
 Phone: (302) 735-4000