

District: Las Americas Aspira Academy
Address: 326 Ruthar Drive, Newark DE 19711
Principal: Margaret Waite
AYP: Met

Telephone: (302) 292-1463
Web: www.aspiracademy.org/

School Demographics

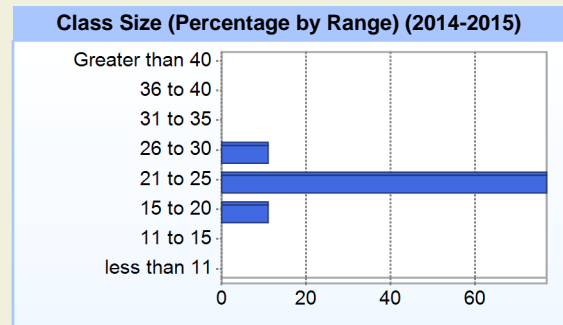
Fall Enrollment		
	2014	2015
Kindergarten	98	90
Grade 1	46	98
Grade 2	90	50
Grade 3	44	91
Grade 4	45	48
Grade 5	50	48
Grade 6	41	50
Grade 7	25	41
Grade 8		25
Total	439	541

Enrollment by Race/Ethnicity		
	2014	2015
African American	12.5%	15.0%
American Indian	0.2%	0.2%
Asian	2.5%	2.8%
Hawaiian	0.2%	0.2%
Hispanic/Latino	57.9%	57.3%
White	25.7%	23.8%
Multi-Racial	0.9%	0.7%

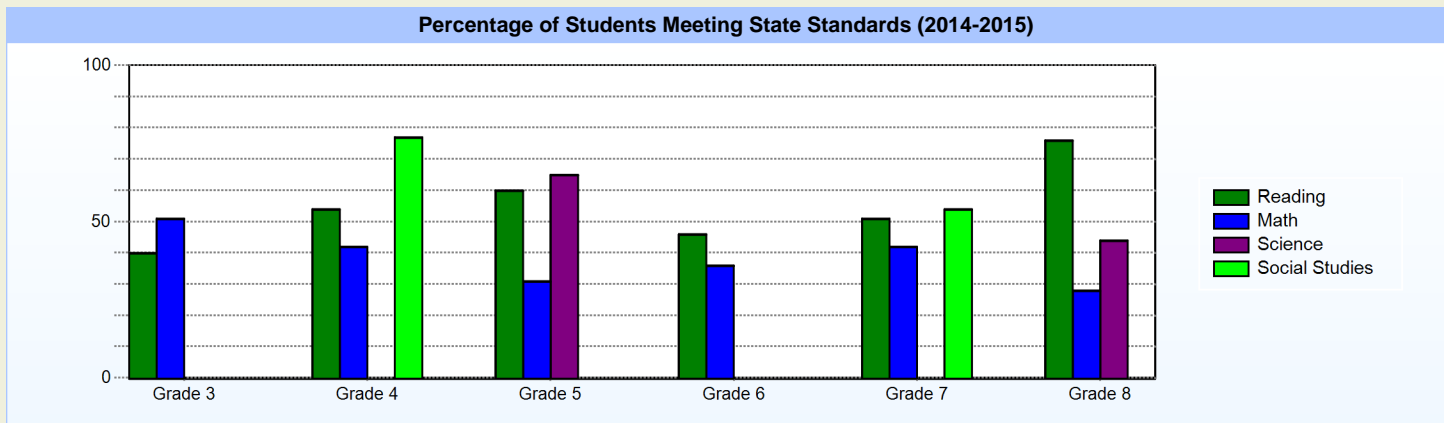
Other Student Characteristics		
	2014	2015
English Language Learner	31.4%	30.3%
Low Income	27.8%	25.0%
Special Education	4.6%	5.7%
Enrolled for Full Year	100.0%	N/A

School Promotion by Grade	
	2014
Kindergarten	90.8%
Grade 1	100.0%
Grade 2	97.8%
Grade 3	95.5%
Grade 4	100.0%
Grade 5	100.0%
Grade 6	100.0%
Grade 7	100.0%

Recently Arrived ELL Students	
	2015
Number of Students Not Tested on ELA Assessment	0



Student Achievement



Exemplary Programs

The mission of Las Américas ASPIRA Academy is to provide a world-class education that prepares students through a dual language, project-based learning curriculum, to become healthy productive community members and leaders, with an expectation that every child, regardless of race, gender, ethnicity, or socio-economic level, is college-bound.

We are accomplishing this mission through the full implementation of a dual language immersion, project-based learning curriculum. Our guiding principles – *Accountability * Social Intelligence * Positive Mindset * Inquiry * Resilience * Appreciation (ASPIRA) – represent the foundation of our character education program. These traits are an integral part of our school-wide implementation of the Responsive Classroom Approach which embraces a fostering of community, based upon teaching socially-responsible behaviors.

Student - School Safety and Discipline

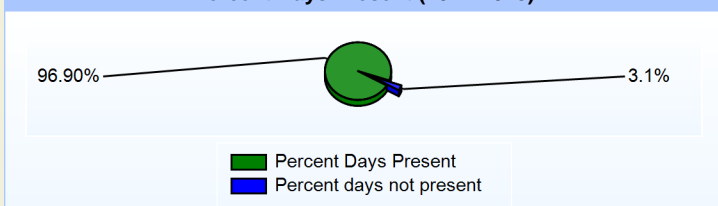
Number of Reported Offenses (2014-2015)

	<u>School</u>	<u>District</u>	<u>State</u>
School Crimes (Title 14, Delaware Code, §4112)	0	0	678
Department of Education (DOE) Offenses	24	24	10432
All School Safety Policy in Place	N/A		

Suspensions and Expulsions

	<u>2015</u>
Number of Suspensions	36
Number of Expulsions	0
Count of Students Suspended/Expelled	28
September 30 Enrollment	541
Percent of Students Suspended/Expelled	5%
District Percentage	5%
State Percentage	12%

Percent Days Present (2014-2015)



Our Staff

Number of Instructional Staff

	<u>2015</u>
Teachers	38
Instructional Support	7
Pupil Support	2
Total	47

Staff by Race/Ethnicity

	<u>2015</u>
American Indian	0.0%
African American	8.5%
Asian American	2.1%
Hispanic	29.8%
White	59.6%

Staffing Ratios

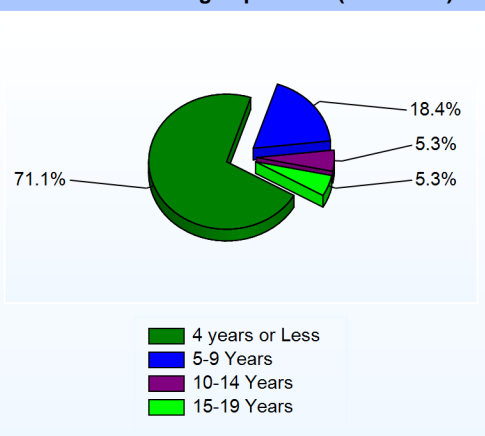
	<u>2015</u>
Students Per Teacher	14
Students Per Administrator	77
Students Per Instructional Staff	12
Students Per Pupil Support Staff	271
School Staff Per Administrator	8

Staff Qualifications

Percentage of Classes Taught by Highly Qualified Teachers (2014-2015)

	<u>Total Classes</u>	<u>% Highly Qualified</u>	<u>% Not Highly Qualified</u>
Reading/ Language Arts	4	100.0%	0.0%
Arts	11	100.0%	0.0%
Foreign Languages	11	100.0%	0.0%
Science	5	100.0%	0.0%
Mathematics	5	100.0%	0.0%
Social Studies	5	100.0%	0.0%
Elementary General	13	100.0%	0.0%

Years of Teaching Experience (2014-2015)

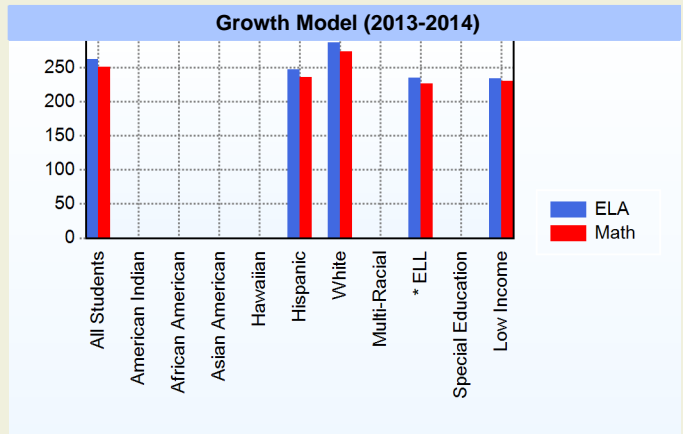
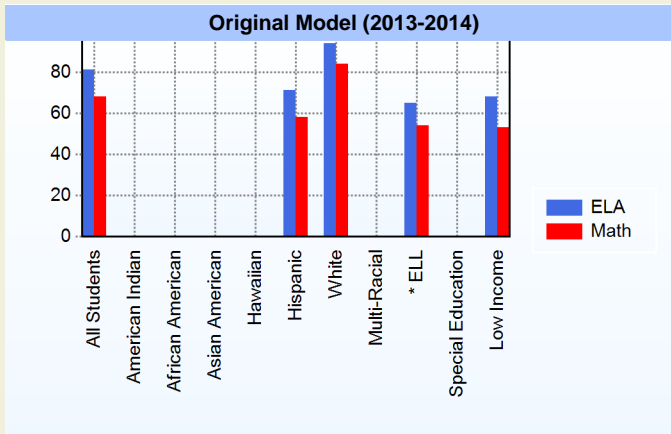


Education Level

	<u>2015</u>
Percent with Masters Degree and Above	31.9%
Percent Holding National Board for Professional Teaching Standards	0.0%

AYP

Only groups with greater than 40 students are reported



* English Language Learner

* English Language Learner

% Test Participation (2013-2014)

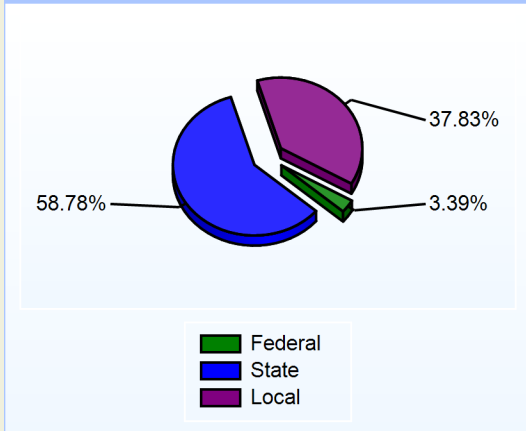
	ELA	Math	ELA Goal	Math Goal
All Students	100	100	95	95
American Indian	*	*	95	95
African American	*	*	95	95
Asian American	*	*	95	95
Hawaiian	*	*	95	95
Hispanic	99	100	95	95
White	100	100	95	95
Multi-Racial	*	*	95	95
English Language Learner	98	100	95	95
Special Education	*	*	95	95
Low Income	100	100	95	95



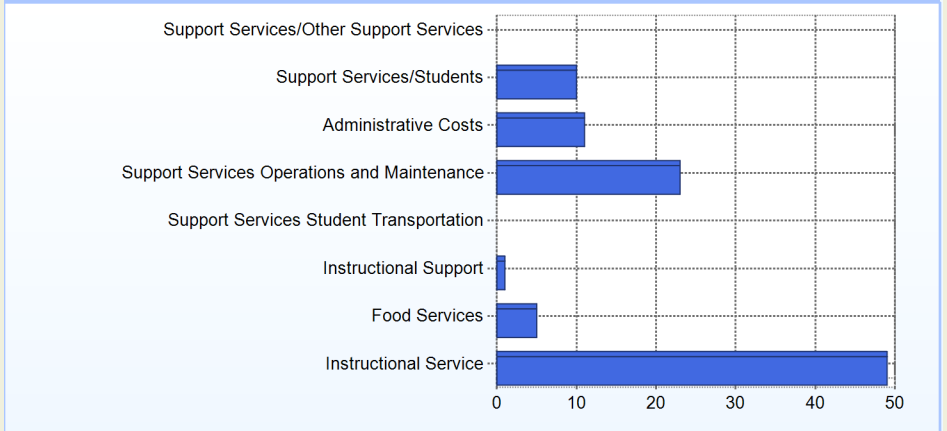
School Finances

District Expenditure per Pupil (2013-2014): \$11,589

District Sources of Revenue (2013-2014)



Percent District Allocation of Current Expenses by Category (2013-2014)

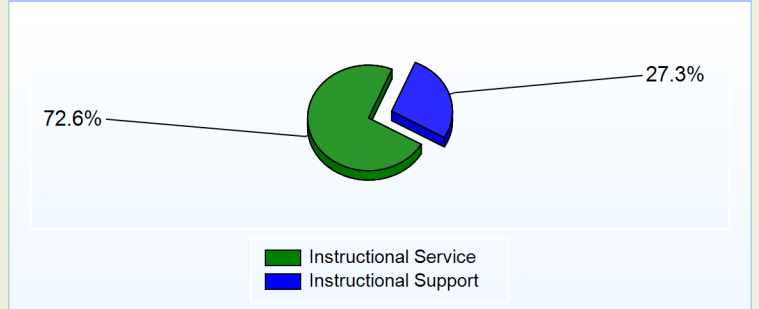


School Salary Allocation

Instructional Service	
2015	
Teachers	60.8%
Instructional Support	7.4%
Pupil Support	4.4%
Total	72.6%

Instructional Support	
2015	
Administration	17.5%
Secretaries	5.1%
Food Services	3.2%
Maintenance	1.5%
Total	27.3%

Instructional vs. Support (2014-2015)



For further information and detailed reports, visit

<http://profiles.doe.k12.de.us>

or contact your local school district office.

Glossary: <http://profiles.doe.k12.de.us/glossary.aspx>



Delaware Department of Education

John G. Townsend Building
 401 Federal Street, Suite #2
 Dover, Delaware, 19901 - 3639
 Phone: (302) 735-4000