

District: Academy of Dover Charter School
Address: 104 Saulsbury Road, Dover DE 19904
Principal: Cheri Marshall
AYP: Met

Telephone: (302) 674-0684
Web: www.aodcharter.org

School Demographics

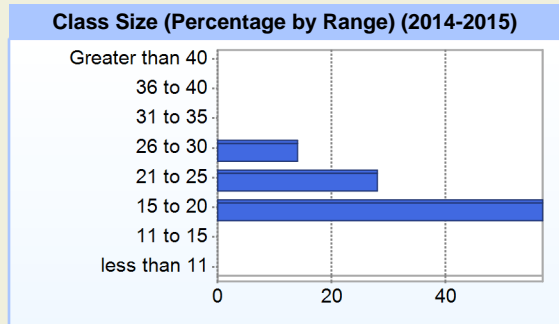
Fall Enrollment		
	2014	2015
Kindergarten	70	62
Grade 1	70	52
Grade 2	59	59
Grade 3	44	49
Grade 4	43	37
Grade 5	22	31
Total	308	290

Enrollment by Race/Ethnicity		
	2014	2015
African American	85.4%	81.0%
American Indian	0.3%	
Asian	1.0%	0.7%
Hawaiian		0.3%
Hispanic/Latino	2.9%	9.0%
White	10.4%	9.0%

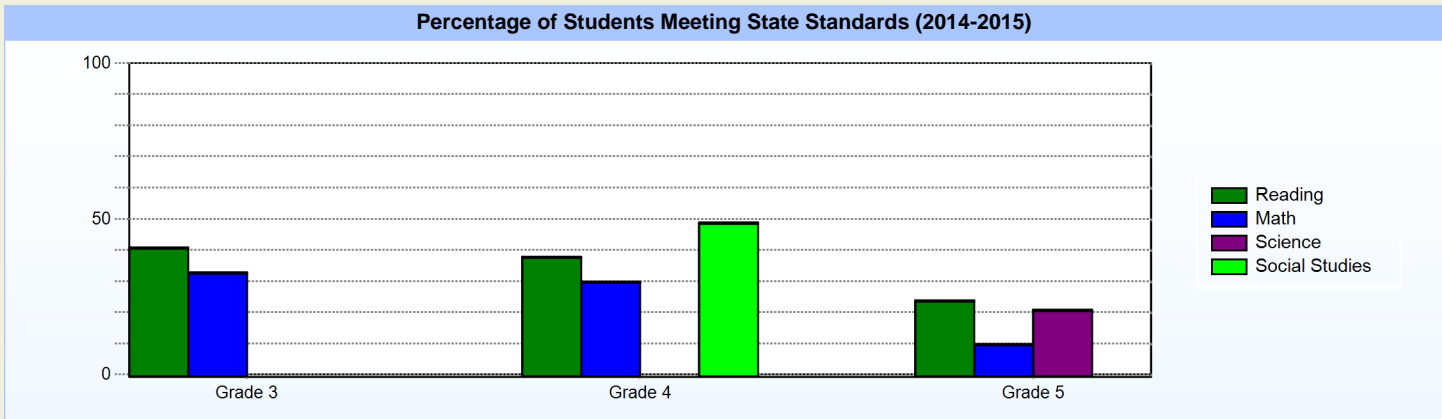
Other Student Characteristics		
	2014	2015
English Language Learner	0.0%	1.4%
Low Income	68.8%	64.8%
Special Education	8.4%	11.7%
Enrolled for Full Year	100.0%	N/A

Recently Arrived ELL Students	
	2015
Number of Students Not Tested on ELA Assessment	0

School Promotion by Grade	
	2014
Kindergarten	97.1%
Grade 1	98.6%
Grade 2	98.3%
Grade 3	97.7%
Grade 4	93.0%
Grade 5	86.4%



Student Achievement



Exemplary Programs

The Academy of Dover offers extended academic learning time with a 200 day school year. AOD also has an elementary chorus and marching band. All students participate in Spanish, Music, Art and Physical Education throughout the school year.

Student - School Safety and Discipline

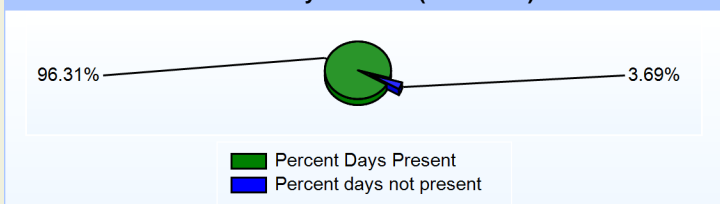
Number of Reported Offenses (2014-2015)

	<u>School</u>	<u>District</u>	<u>State</u>
School Crimes (Title 14, Delaware Code, §4112)	0	0	678
Department of Education (DOE) Offenses	16	16	10432
All School Safety Policy in Place	Yes		

Suspensions and Expulsions

	<u>2015</u>
Number of Suspensions	129
Number of Expulsions	0
Count of Students Suspended/Expelled	58
September 30 Enrollment	290
Percent of Students Suspended/Expelled	20%
District Percentage	20%
State Percentage	12%

Percent Days Present (2014-2015)



Our Staff

Number of Instructional Staff

	<u>2015</u>
Teachers	21
Instructional Support	9
Pupil Support	1
Total	31

Staff by Race/Ethnicity

	<u>2015</u>
American Indian	0.0%
African American	35.5%
Asian American	0.0%
Hispanic	9.7%
White	54.8%

Staffing Ratios

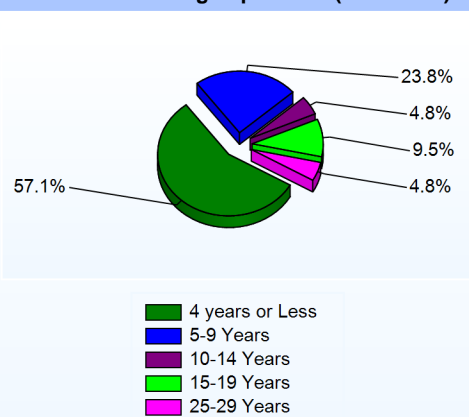
	<u>2015</u>
Students Per Teacher	14
Students Per Administrator	145
Students Per Instructional Staff	10
Students Per Pupil Support Staff	290
School Staff Per Administrator	19

Staff Qualifications

Percentage of Classes Taught by Highly Qualified Teachers (2014-2015)

	<u>Total Classes</u>	<u>% Highly Qualified</u>	<u>% Not Highly Qualified</u>
Arts	2	100.0%	0.0%
Foreign Languages	1	100.0%	0.0%
Elementary General	13	92.3%	7.7%

Years of Teaching Experience (2014-2015)



Education Level

	<u>2015</u>
Percent with Masters Degree and Above	29.0%
Percent Holding National Board for Professional Teaching Standards	0.0%

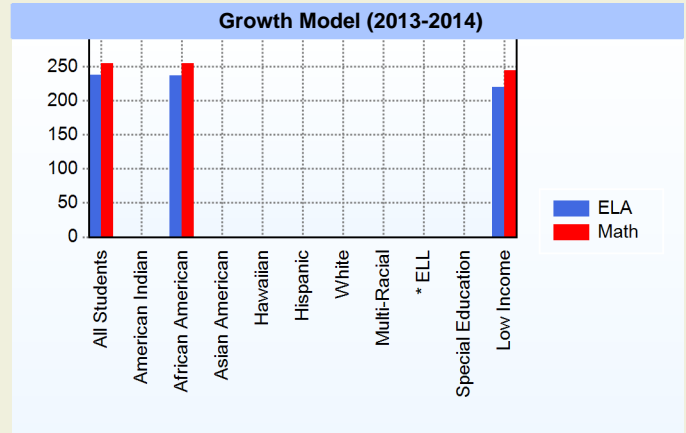
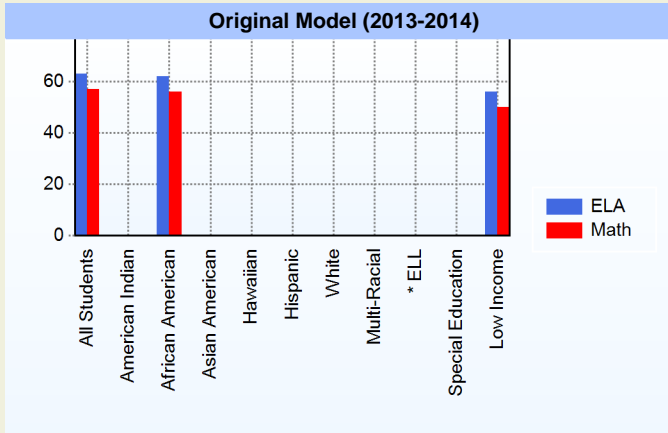
Curriculum Highlights

We have implemented a reduction in student/teacher ratio in each classroom during the language arts block by utilizing related art teachers in the classrooms during that time to assist with small group instruction.

AOD provides rigorous instruction aligned to the Common Core Standards. Teachers use meaningful assessments which gauge student progress and provide actionable information. Writing is used in ALL content areas.

AYP

Only groups with greater than 40 students are reported



* English Language Learner

* English Language Learner

% Test Participation (2013-2014)

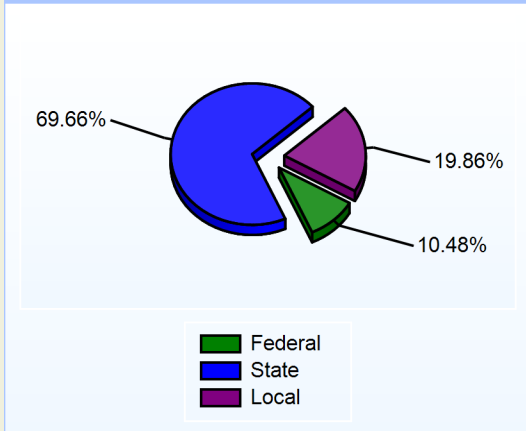
	<u>ELA</u>	<u>Math</u>	<u>ELA Goal</u>	<u>Math Goal</u>
All Students	99	100	95	95
American Indian	*	*	95	95
African American	99	100	95	95
Asian American	*	*	95	95
Hawaiian	*	*	95	95
Hispanic	*	*	95	95
White	*	*	95	95
Multi-Racial	*	*	95	95
English Language Learner	*	*	95	95
Special Education	*	*	95	95
Low Income	100	100	95	95



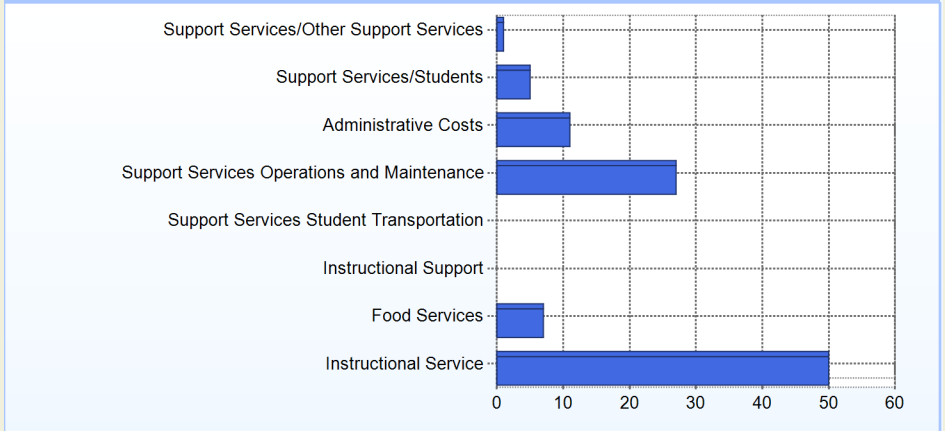
School Finances

District Expenditure per Pupil (2013-2014): \$10,942

District Sources of Revenue (2013-2014)



Percent District Allocation of Current Expenses by Category (2013-2014)

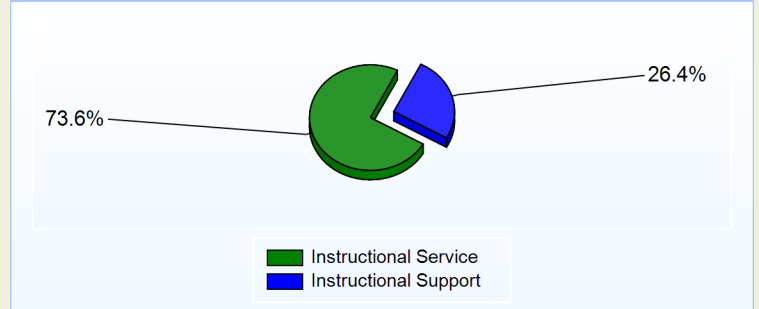


School Salary Allocation

Instructional Service	
2015	
Teachers	53.8%
Instructional Support	15.9%
Pupil Support	3.9%
Total	73.6%

Instructional Support	
2015	
Administration	13.7%
Secretaries	5.5%
Food Services	4.8%
Maintenance	2.4%
Total	26.4%

Instructional vs. Support (2014-2015)



For further information and detailed reports, visit

<http://profiles.doe.k12.de.us>

or contact your local school district office.

Glossary: <http://profiles.doe.k12.de.us/glossary.aspx>



Delaware Department of Education

John G. Townsend Building
 401 Federal Street, Suite #2
 Dover, Delaware, 19901 - 3639
 Phone: (302) 735-4000