

District: Indian River School District
Address: 31 Hosier Street, Selbyville DE 19975
School District Superintendent: Susan Bunting

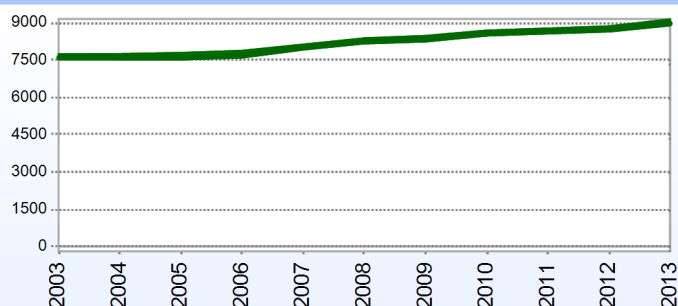
Telephone: (302) 436-1000
Web: www.irsd.net

School Board Members

Charles Bireley, President	James Hudson, Board Member
Susan Bunting, Executive Secretary	Leolga Wright, Board Member
James Fritz, Board Member	Nina Bunting, Board Member
W. Scott Collins, Board Member	Donald Hattier, Board Member
Douglas Hudson, Board Member	Rodney Layfield, Vice President
Shaun Fink, Board Member	

District Information

Enrollment History



Students Who Reside in the District

	2013
Number of Students in Public Schools (Non Charter)	9,147
Percent of Students in Public Schools (Non Charter)	95.6%
Number of Students in Non-Public Schools	418
Percent of Students in Non-Public Schools	4.4%

Fall Enrollment

	2012	2013
Pre-Kindergarten	201	233
Kindergarten	796	790
Grade 1	805	849
Grade 2	731	813
Grade 3	705	739
Grade 4	752	714
Grade 5	727	764
Grade 6	634	699
Grade 7	652	630
Grade 8	640	675
Grade 9	550	578
Grade 10	569	538
Grade 11	572	569
Grade 12	537	556
Total	8,871	9,147

Enrollment by Race/Ethnicity

	2012	2013
African American	15.4%	14.6%
American Indian	1.1%	0.9%
Asian	1.4%	1.4%
Hawaiian	0.0%	0.0%
Hispanic/Latino	23.7%	25.2%
White	55.2%	54.6%
Multi-Racial	3.1%	3.3%

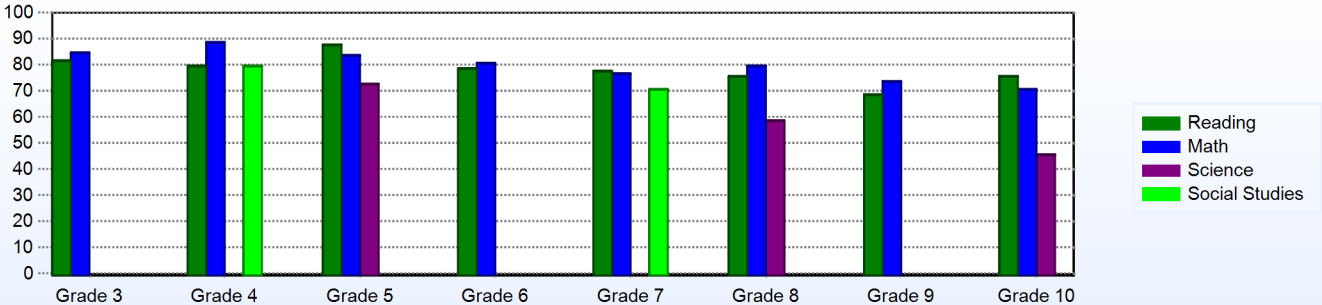
Advanced Placement (AP)

	2012
Advanced Placement Courses	20
No. of Students Enrolled	247
No. of Exams Taken	450
Total No. of Exams Passed	171

Other Student Characteristics

	2012	2013
English Language Learner	10.5%	10.7%
Low Income	63.4%	66.3%
Special Education	13.9%	13.9%
Enrolled for Full Year	100.0%	N/A%

Percentage of Students Meeting State Standards



District Staff

Number of Staff

	2013
Teachers	616
Librarians	6
Instructional Support	168
Pupil Support	75
Administrators	46
Secretaries	61
Food Service	89
Maintenance	93
Not Classified	5
Total	1,158

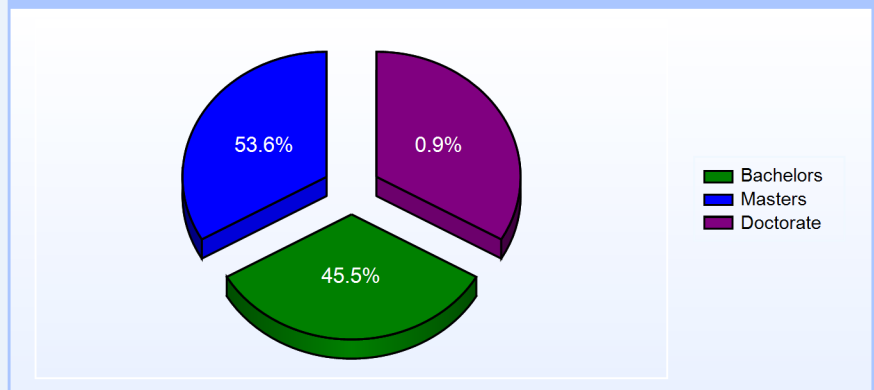
Percentage of Classes Taught by Highly Qualified Teachers

	Total Classes	% Highly Qualified
English	152	100.0%
Reading/ Language Arts	132	99.2%
Arts	195	100.0%
Foreign Languages	128	95.3%
Science	201	98.0%
Mathematics	268	94.4%
Geography	10	100.0%
Civics & Government	34	100.0%
Social Studies	87	95.4%
History	72	100.0%
Elementary General	280	98.9%

School Choice

	2014
Number of Schools with Choice Students:	14
Number of Local Choice Students: (choice students from the same district)	866
Number of State Choice Students: (choice students from another district)	242
Number of Federal Choice Students: (NCLB School Under Improvement)	0
Number of Federal Choice Students: (NCLB Unsafe School)	0
Number of Federal Choice Students: (NCLB Victim of a Violent Felony)	0

Education Level



Graduation Rate - ESEA 4 Year Adjusted

	2011	2012
	ESEA	ESEA
All Students	83.8%	86.6%
American Indian	66.7%	100.0%
African American	80.9%	86.2%
Asian American	100.0%	100.0%
Hispanic	74.7%	90.2%
White	85.9%	85.8%
Multi-Racial	100.0%	0.0%
English Language Learner	65.6%	100.0%
Special Education	68.7%	77.1%
Low Income	79.7%	84.8%

Year End Position

	Year-End Balance	Expenditures	Percentage
2008	\$9,286,738.00	\$85,135,123.00	10.9%
2009	\$13,941,130.00	\$87,503,742.00	15.9%
2010	\$17,231,239.00	\$87,924,800.00	19.6%
2011	\$16,741,902.00	\$94,747,950.00	17.7%
2012	\$17,020,773.00	\$104,113,670.00	16.3%

Persistently Dangerous School

The school district has no "Persistently Dangerous Schools"

District Information

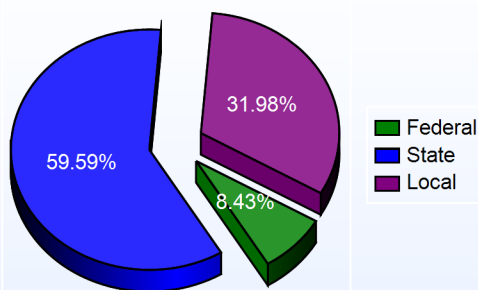
District DropOut Information						
	2010		2011		2012	
	Count	Percent	Count	Percent	Count	Percent
District	82	3.5%	44	1.9%	47	2.1%

Delaware Accountability		
<u>School Category</u>	<u>School</u>	<u>AYP</u>
Elementary	Clayton (John M.) Elementary School	Met
	East Millsboro Elementary School	Met
	Georgetown Elementary School	Met
	Long Neck Elementary School	Met
	Lord Baltimore Elementary School	Met
	North Georgetown Elementary School	Met
	Showell (Phillip C.) Elementary School	Met
	Southern Delaware School of the Arts	Met
Middle	Georgetown Middle School	Met
	Millsboro Middle School	Met
	Selbyville Middle School	Met
High School	Indian River High School	Met
	Sussex Central High School	Met
Other	Ennis (Howard T.) School	Met
	Ingram Pond	Not Aplicable

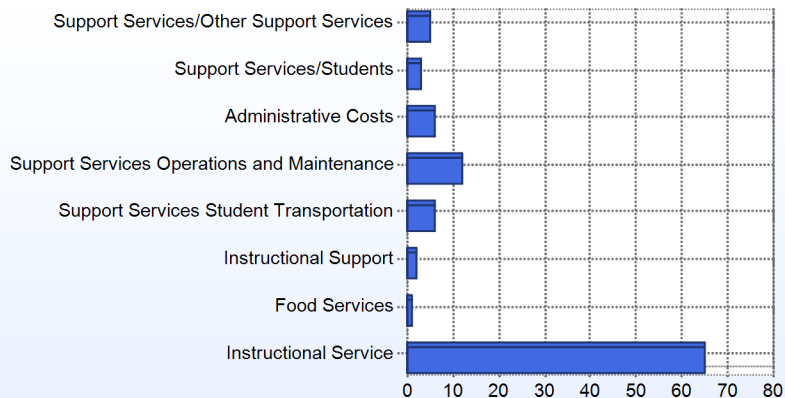
School Finances

District Expenditure per Pupil: \$11,736

District Sources of Revenue



Percent District Allocation of Current Expenses by Category



District Salary Allocation

Instructional Service

2013

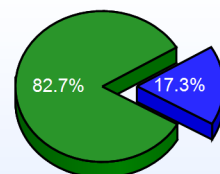
Teachers	67.5%
Librarians	0.8%
Instructional Support	8.4%
Pupil Support	6.0%
Total	82.7%

Instructional Support

2013

Administration	5.5%
Secretaries	3.0%
Food Services	2.6%
Maintenance	5.8%
Not Classified	0.4%
Total	17.3%

Instructional Vs Support



■ Instructional Service
■ Instructional Support

Snapshot of Average Teacher Salaries

	Bachelor			Master			Doctorate	
	4 years or Less	15-19 Years		4 years or Less	15-19 Years		30 Years or More	30 Years or More
Snapshot of Average Teacher Salaries	\$40,718	\$45,680	\$50,694	\$46,022	\$65,416	\$70,900	\$83,202	

For further information and detailed reports, visit

<http://profiles.doe.k12.de.us>

or contact your local district office.



Delaware Department of Education

John G. Townsend Building
 401 Federal Street, Suite #2
 Dover, Delaware, 19901 - 3639
 Phone: (302) 735-4000

District: Indian River School District
Address: 26064 School Lane, Millsboro DE 19966
Principal: David Hudson
AYP: Met

Telephone: (302) 945-6200
Web: www.ln.irsd.k12.de.us

School Demographics

Fall Enrollment		
	2012	2013
Pre-Kindergarten	24	20
Kindergarten	119	132
Grade 1	105	121
Grade 2	106	118
Grade 3	89	116
Grade 4	105	93
Grade 5	97	109
Total	645	709

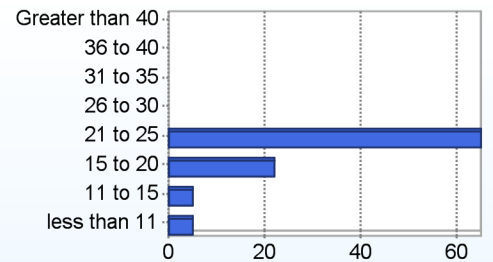
Recently Arrived ELL Students	
	2013
Number of Students Not Tested on ELA Assessment	1

Enrollment by Race/Ethnicity		
	2012	2013
African American	12.7%	12.4%
American Indian	2.0%	2.0%
Asian	1.4%	1.1%
Hispanic/Latino	14.4%	15.4%
White	63.1%	63.0%
Multi-Racial	6.4%	6.1%

School Promotion by Grade	
	2012
Pre-Kindergarten	100.0%
Kindergarten	97.5%
Grade 1	95.2%
Grade 2	100.0%
Grade 3	96.6%
Grade 4	100.0%
Grade 5	96.9%

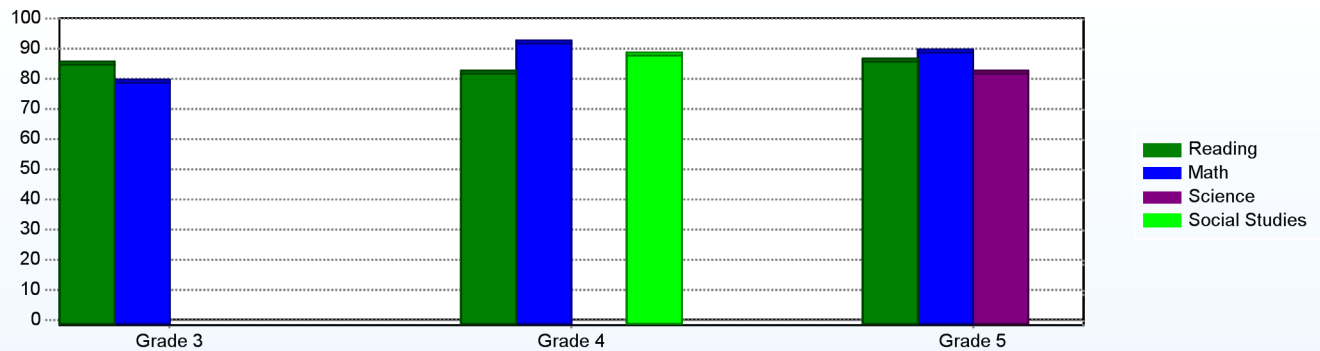
Other Student Characteristics		
	2012	2013
English Language Learner	6.3%	8.0%
Low Income	71.2%	74.7%
Special Education	12.6%	12.3%
Enrolled for Full Year	100.0%	N/A

Class Size (Percentage by Range) (2012-2013)



Student Achievement

Percentage of Students Meeting State Standards (2012-2013)



Exemplary Programs

Long Neck Elementary is a National Distinguished Title I School and a National Blue Ribbon Elementary School. Long Neck Elementary was named a Superstar in Education by the Delaware Chamber of Commerce and was named a Positive Behavior Star School by the Department of Education.

At Long Neck Elementary, we offer hands-on learning opportunities to all of our students. We have partnered with the Inland Bays Project and have a fully functioning Wetland School Yard Habitat and learning center. Long Neck Elementary has a wonderful PTO that supports the school tremendously. Our Professional Learning Communities are an integral part of our staff development and culture.

Student - School Safety and Discipline

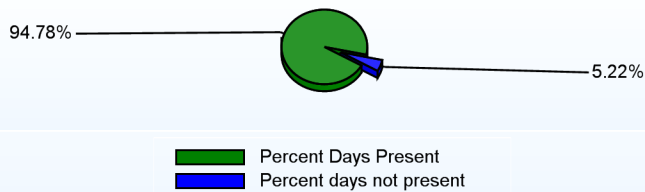
Number of Reported Offenses (2012-2013)

	<u>School</u>	<u>District</u>	<u>State</u>
School Crimes (Title 14, Delaware Code, §4112)		38	579
Department of Education (DOE) Offenses	1	286	10732
All School Safety Policy in Place	Yes		

Suspensions and Expulsions

	<u>2013</u>
Number of Suspensions	37
Number of Expulsions	0
Count of Students Suspended/Expelled	27
September 30 Enrollment	709
Percent of Students Suspended/Expelled	4%
District Percentage	12%
State Percentage	14%

Percent Days Present (2012-2013)



Our Staff

Number of Instructional Staff

	<u>2013</u>
Teachers	42
Instructional Support	8
Pupil Support	1
Total	51

Staff by Race/Ethnicity

	<u>2013</u>
American Indian	0.0%
African American	0.0%
Asian American	0.0%
Hispanic	0.0%
White	100.0%

Staffing Ratios

	<u>2013</u>
Students Per Teacher	17
Students Per Administrator	355
Students Per Instructional Staff	14
Students Per Pupil Support Staff	709
School Staff Per Administrator	32

Staff Qualifications

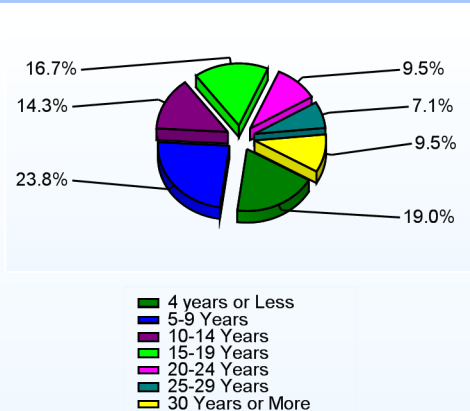
Percentage of Classes Taught by Highly Qualified Teachers (2012-2013)

	<u>Total Classes</u>	<u>% Highly Qualified</u>	<u>% Not Highly Qualified</u>
Arts	2	100.0%	0.0%
Elementary General	39	100.0%	0.0%

Education Level

	<u>2013</u>
Percent with Masters Degree and Above	56.9%
Percent Holding National Board for Professional Teaching Standards	4.5%

Years of Teaching Experience (2012-2013)

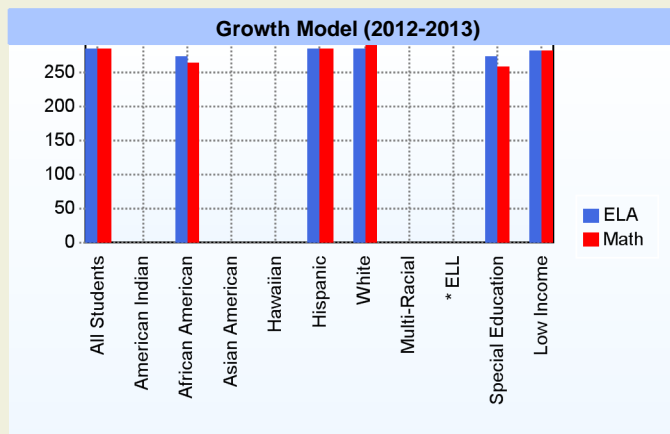
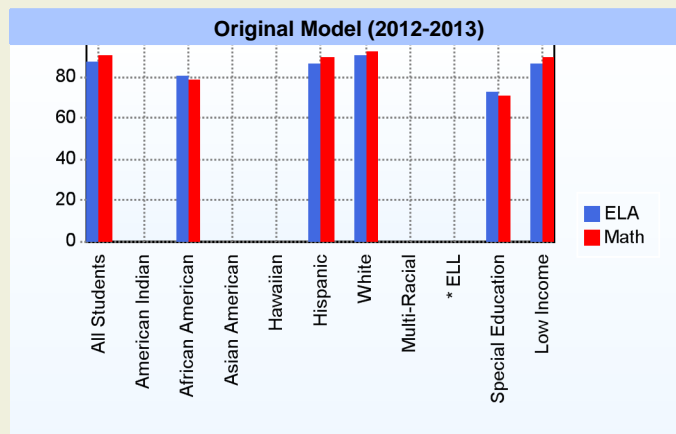


Curriculum Highlights

At Long Neck Elementary School we strive daily for academic excellence through a variety of programs. We have a comprehensive Math curriculum that spirals throughout the grade levels and focuses on key concepts and real-world problem solving methods. We utilize Response to Intervention (RTI) from Pre K to Grade 5. RTI allows for small group instruction to assist all children at their instructional level from the neediest to those just waiting to soar. Further, all of our teachers use Learning Focused Strategies as the foundation of their instruction. All of our instruction is cross curricular and student centered.

AYP

Only groups with greater than 40 students are reported



* English Language Learner

* English Language Learner

% Test Participation (2012-2013)

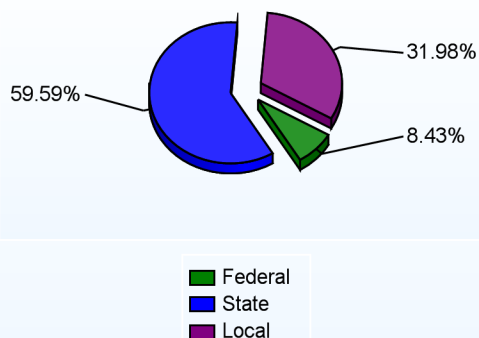
	<u>ELA</u>	<u>Math</u>	<u>ELA Goal</u>	<u>Math Goal</u>
All Students	100	100	95	95
American Indian	*	*	95	95
African American	100	100	95	95
Asian American	*	*	95	95
Hawaiian	*	*	95	95
Hispanic	100	100	95	95
White	100	100	95	95
Multi-Racial	*	*	95	95
English Language Learner	*	*	95	95
Special Education	100	100	95	95
Low Income	100	100	95	95



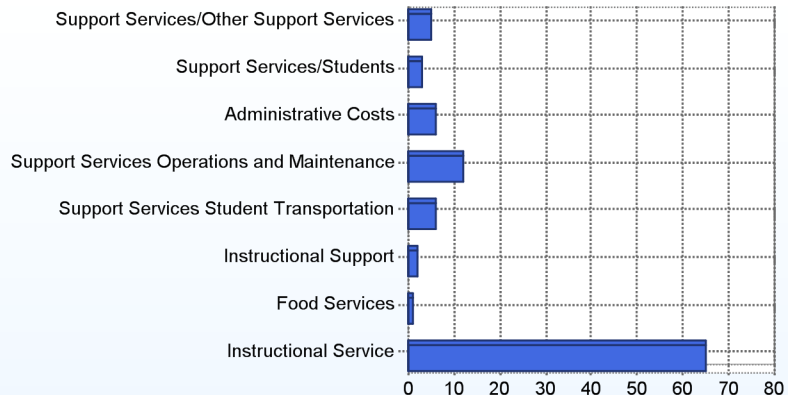
School Finances

District Expenditure per Pupil (2011-2012): \$11,736

District Sources of Revenue (2011-2012)



Percent District Allocation of Current Expenses by Category (2011-2012)



School Salary Allocation

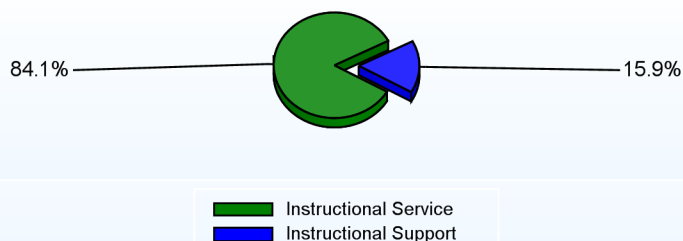
Instructional Service

	2013
Teachers	75.1%
Instructional Support	6.4%
Pupil Support	2.6%
Total	84.1%

Instructional Support

	2013
Administration	5.4%
Secretaries	2.5%
Food Services	2.9%
Maintenance	5.1%
Total	15.9%

Instructional vs. Support (2012-2013)



For further information and detailed reports, visit

<http://profiles.doe.k12.de.us>

or contact your local school district office.

Glossary: <http://profiles.doe.k12.de.us/glossary.aspx>



Delaware Department of Education

John G. Townsend Building
401 Federal Street, Suite #2
Dover, Delaware, 19901 - 3639
Phone: (302) 735-4000

District: Indian River School District

Telephone: (302) 855-2430

Address: 664 North Bedford Street, Georgetown DE 19947

Web: www.ng.irsd.k12.de.us

Principal: Richard Evans

AYP: Met

School Demographics

Fall Enrollment		
	2012	2013
Pre-Kindergarten	12	30
Kindergarten	144	158
Grade 1	152	145
Grade 2	118	146
Grade 3	105	111
Grade 4	115	112
Grade 5	110	114
Total	756	816

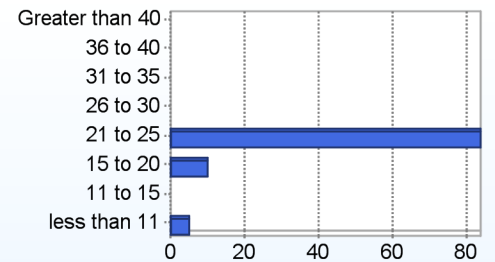
Enrollment by Race/Ethnicity		
	2012	2013
African American	11.4%	8.8%
American Indian	1.2%	0.9%
Asian	1.2%	0.7%
Hispanic/Latino	56.0%	59.9%
White	28.0%	28.3%
Multi-Racial	2.2%	1.3%

Other Student Characteristics		
	2012	2013
English Language Learner	43.8%	41.0%
Low Income	78.9%	82.2%
Special Education	9.7%	9.4%
Enrolled for Full Year	100.0%	N/A

School Promotion by Grade	
	2012
Pre-Kindergarten	100.0%
Kindergarten	97.2%
Grade 1	92.1%
Grade 2	97.5%
Grade 3	98.1%
Grade 4	97.4%
Grade 5	100.0%

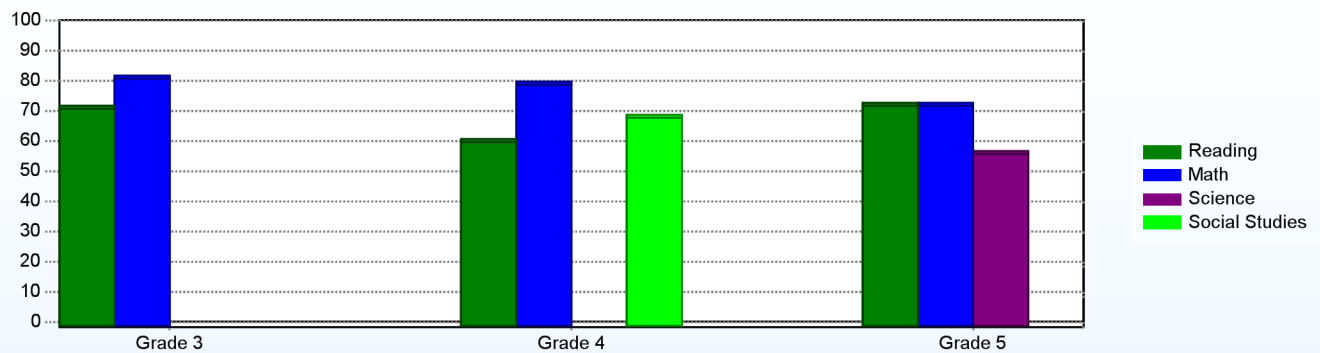
Recently Arrived ELL Students	
	2013
Number of Students Not Tested on ELA Assessment	2

Class Size (Percentage by Range) (2012-2013)



Student Achievement

Percentage of Students Meeting State Standards (2012-2013)



Exemplary Programs

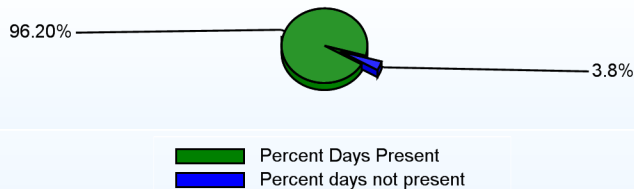
North Georgetown Elementary was recognized as a National Blue Ribbon School and a State Distinguished Title I School in 2006. NGE has also been recognized by the Delaware Department of Education as a superior school for the past five years. We have many programs that challenge students in the areas of math, reading, science, social studies, writing, and technology. Through our 21st Century Community Partnership Grant, we are able to provide after-school and summer school opportunities at both NGE and our partner sites. La Casita, Richard Allen, and Georgetown Boys and Girls Club are among the partners that help provide greater opportunities for our students. Students who participate in these academic/enrichment programs receive extra support and expanded opportunities for learning. NGE uses an Early Bird before-school program to provide intervention support and previewing opportunities. NGE also participates in the Creative Mentoring Program.

Student - School Safety and Discipline

Number of Reported Offenses (2012-2013)

	<u>School</u>	<u>District</u>	<u>State</u>
School Crimes (Title 14, Delaware Code, §4112)		38	579
Department of Education (DOE) Offenses	5	286	10732
All School Safety Policy in Place	Yes		

Percent Days Present (2012-2013)



Suspensions and Expulsions

	<u>2013</u>
Number of Suspensions	63
Number of Expulsions	0
Count of Students Suspended/Expelled	48
September 30 Enrollment	816
Percent of Students Suspended/Expelled	6%
District Percentage	12%
State Percentage	14%

Our Staff

Number of Instructional Staff

	<u>2013</u>
Teachers	46
Librarians	1
Instructional Support	14
Pupil Support	2
Total	63

Staff by Race/Ethnicity

	<u>2013</u>
American Indian	0.0%
African American	4.8%
Asian American	0.0%
Hispanic	7.9%
White	87.3%

Staffing Ratios

	<u>2013</u>
Students Per Teacher	18
Students Per Administrator	272
Students Per Instructional Staff	13
Students Per Pupil Support Staff	408
School Staff Per Administrator	25

Staff Qualifications

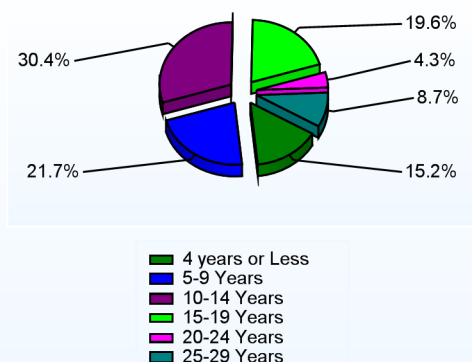
Percentage of Classes Taught by Highly Qualified Teachers (2012-2013)

	<u>Total Classes</u>	<u>% Highly Qualified</u>	<u>% Not Highly Qualified</u>
Arts	1	100.0%	0.0%
Elementary General	41	97.6%	2.4%

Education Level

	<u>2013</u>
Percent with Masters Degree and Above	55.6%
Percent Holding National Board for Professional Teaching Standards	14.3%

Years of Teaching Experience (2012-2013)

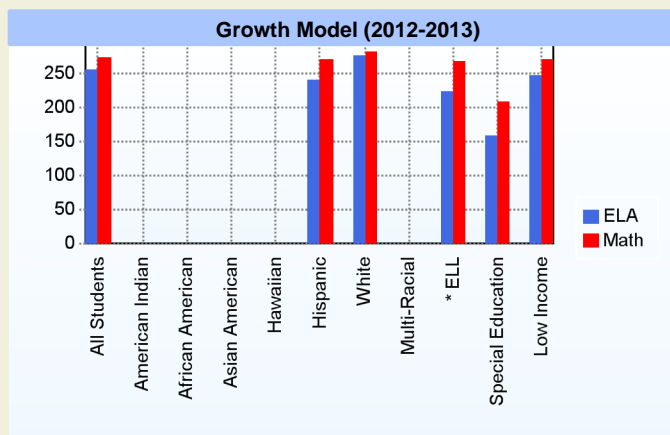
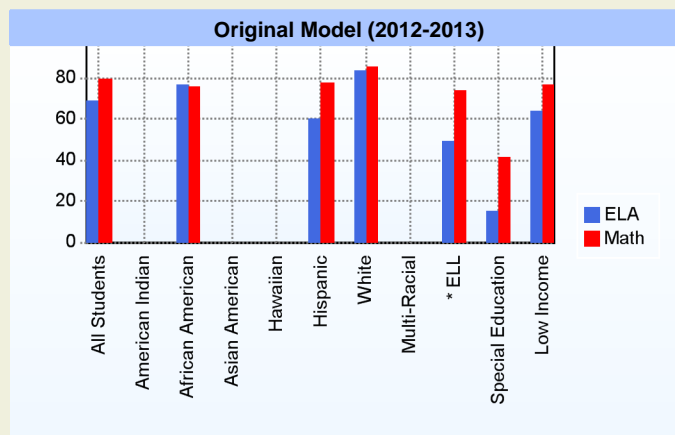


Curriculum Highlights

North Georgetown Elementary adheres to the District and State Curriculum expectations while making modifications to best meet the needs of all learners. Curriculum highlights include: Small group previewing and tutoring provided by retired teachers, SOAR needs-based reading groups, Professional Learning Communities, flexible reading groups in the classrooms, Earobics, Success Maker, DIBELS assessments, Scholastic Reading Counts, and the Trailblazers Math program. Teachers and staff adhere to all state and district Response To Intervention guidelines. Successful Science and Social Studies DSTP scores and improved student achievement can be attributed to the Smithsonian Science project and an increased emphasis on the Social Studies state standards. Finally, we provide inclusion opportunities for all Special Education and English Language Learner students.

AYP

Only groups with greater than 40 students are reported



* English Language Learner

* English Language Learner

% Test Participation (2012-2013)

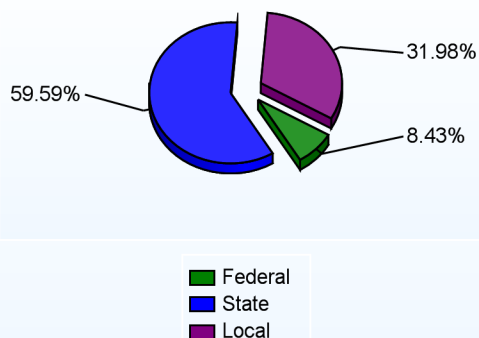
	<u>ELA</u>	<u>Math</u>	<u>ELA Goal</u>	<u>Math Goal</u>
All Students	100	100	95	95
American Indian	*	*	95	95
African American	*	*	95	95
Asian American	*	*	95	95
Hawaiian	*	*	95	95
Hispanic	100	100	95	95
White	100	100	95	95
Multi-Racial	*	*	95	95
English Language Learner	100	100	95	95
Special Education	100	100	95	95
Low Income	100	100	95	95



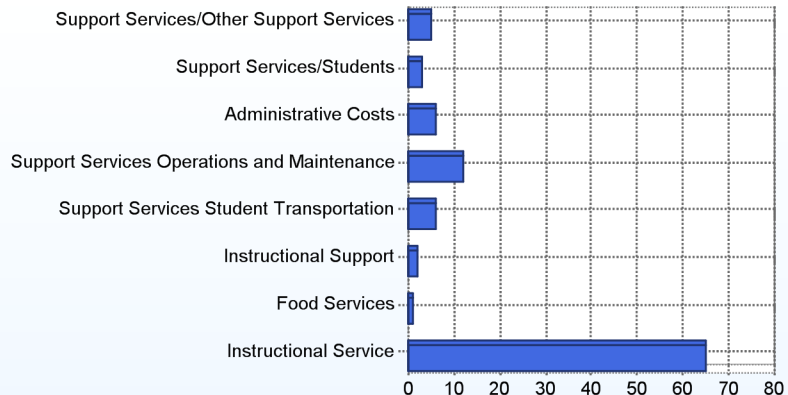
School Finances

District Expenditure per Pupil (2011-2012): \$11,736

District Sources of Revenue (2011-2012)



Percent District Allocation of Current Expenses by Category (2011-2012)



School Salary Allocation

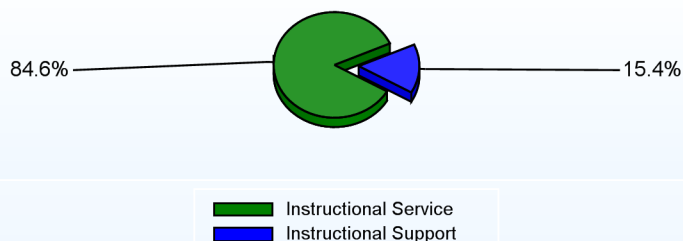
Instructional Service

	2013
Teachers	69.9%
Librarians	2.2%
Instructional Support	10.1%
Pupil Support	2.4%
Total	84.6%

Instructional Support

	2013
Administration	6.1%
Secretaries	2.3%
Food Services	2.7%
Maintenance	4.3%
Total	15.4%

Instructional vs. Support (2012-2013)



For further information and detailed reports, visit

<http://profiles.doe.k12.de.us>

or contact your local school district office.

Glossary: <http://profiles.doe.k12.de.us/glossary.aspx>



Delaware Department of Education

John G. Townsend Building
401 Federal Street, Suite #2
Dover, Delaware, 19901 - 3639
Phone: (302) 735-4000

District: Indian River School District
Address: 252 Clayton Ave, Frankford DE 19945
Principal: Charlynn Hopkins
AYP: Met

Telephone: (302) 732-3808
Web: www.jc.irsd.k12.de.us

School Demographics

Fall Enrollment		
	2012	2013
Pre-Kindergarten	22	24
Kindergarten	89	103
Grade 1	86	87
Grade 2	79	81
Grade 3	83	78
Grade 4	79	77
Grade 5	75	76
Total	513	526

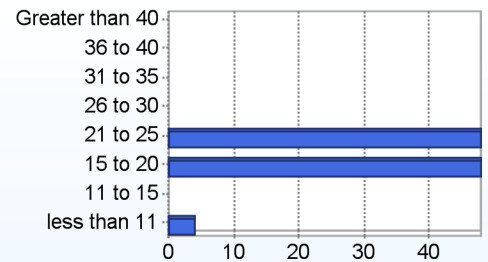
Enrollment by Race/Ethnicity		
	2012	2013
African American	21.4%	21.1%
American Indian	1.6%	1.5%
Asian	2.3%	2.5%
Hispanic/Latino	45.6%	45.6%
White	28.5%	29.3%
Multi-Racial	0.6%	

School Promotion by Grade	
	2012
Pre-Kindergarten	81.8%
Kindergarten	98.9%
Grade 1	97.7%
Grade 2	97.5%
Grade 3	97.6%
Grade 4	98.7%
Grade 5	100.0%

Other Student Characteristics		
	2012	2013
English Language Learner	25.5%	26.3%
Low Income	85.1%	87.3%
Special Education	11.2%	12.9%
Enrolled for Full Year	100.0%	N/A

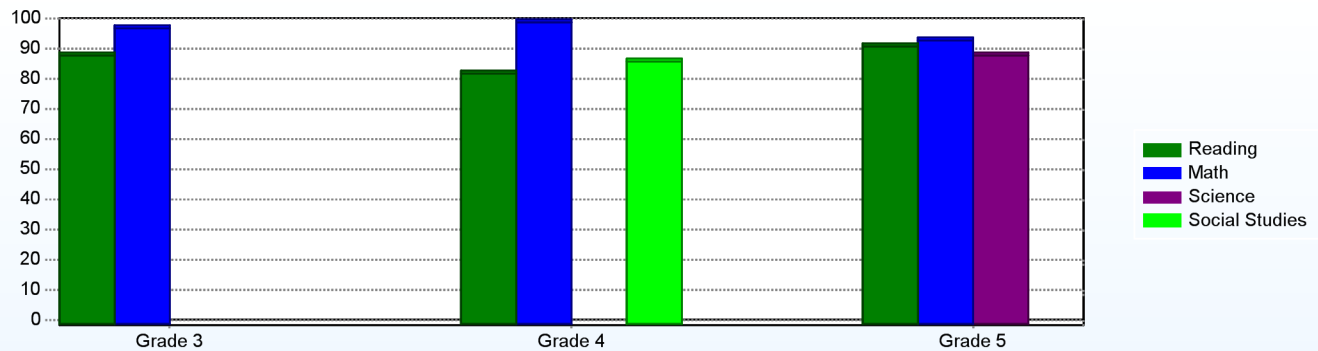
Recently Arrived ELL Students	
	2013
Number of Students Not Tested on ELA Assessment	0

Class Size (Percentage by Range) (2012-2013)



Student Achievement

Percentage of Students Meeting State Standards (2012-2013)



Exemplary Programs

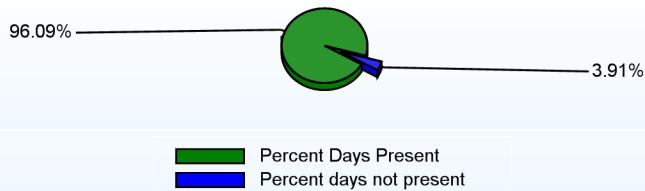
Exemplary programs at John M. Clayton Elementary School include Student Mentoring, ExCEL for highly able students, Fifth Grade Band, and a Spanish Language Immersion Program. We also participate in CATCH, Take 10 and have a Healthy Habits initiative in conjunction with Nemours. We are a Positive Behavior Supports school, host regular Title I Parent Information Nights and developed a Schoolyard Habitat in conjunction with the Center for the Inland Bays. Our PTO is very active and hosts many events/fundraisers throughout the school year; other annual events include the Talent Show and grade level choral concerts. JMC also hosts the district HHPD program.

Student - School Safety and Discipline

Number of Reported Offenses (2012-2013)

	<u>School</u>	<u>District</u>	<u>State</u>
School Crimes (Title 14, Delaware Code, §4112)		38	579
Department of Education (DOE) Offenses		286	10732
All School Safety Policy in Place	Yes		

Percent Days Present (2012-2013)



Suspensions and Expulsions

	<u>2013</u>
Number of Suspensions	15
Number of Expulsions	0
Count of Students Suspended/Expelled	8
September 30 Enrollment	526
Percent of Students Suspended/Expelled	2%
District Percentage	12%
State Percentage	14%

Our Staff

Number of Instructional Staff

	<u>2013</u>
Teachers	37
Instructional Support	9
Pupil Support	2
Total	48

Staff by Race/Ethnicity

	<u>2013</u>
American Indian	0.0%
African American	4.2%
Asian American	0.0%
Hispanic	4.2%
White	91.7%

Staffing Ratios

	<u>2013</u>
Students Per Teacher	14
Students Per Administrator	263
Students Per Instructional Staff	11
Students Per Pupil Support Staff	263
School Staff Per Administrator	31

Staff Qualifications

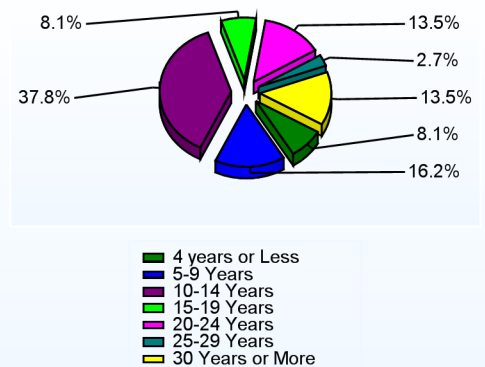
Percentage of Classes Taught by Highly Qualified Teachers (2012-2013)

	<u>Total Classes</u>	<u>% Highly Qualified</u>	<u>% Not Highly Qualified</u>
Reading/ Language Arts	1	100.0%	0.0%
Arts	2	100.0%	0.0%
Elementary General	27	96.3%	3.7%

Education Level

	<u>2013</u>
Percent with Masters Degree and Above	56.3%
Percent Holding National Board for Professional Teaching Standards	2.6%

Years of Teaching Experience (2012-2013)

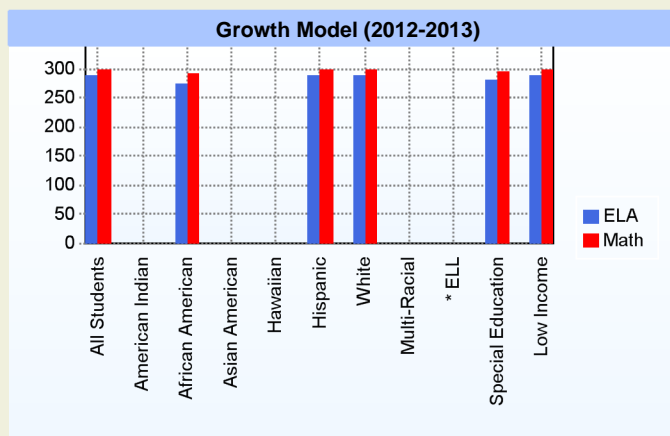
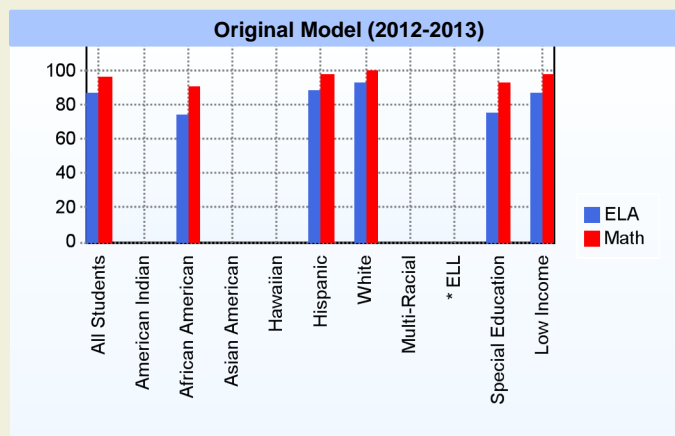


Curriculum Highlights

The students of John M. Clayton Elementary School have made exceptional progress in meeting state standards. Teachers and staff use a variety of data sources to ensure that appropriate instruction and learning are occurring. Student progress is monitored regularly with interventions provided in a timely manner, as needed. Teachers, specialists and administrators work diligently to meet the instructional needs of students using the state defined process of Response to Intervention, and within the context of a Professional Learning Community. When necessary, even more intense supports are provided for English Language Learners and students with disabilities.

AYP

Only groups with greater than 40 students are reported



* English Language Learner

* English Language Learner

% Test Participation (2012-2013)

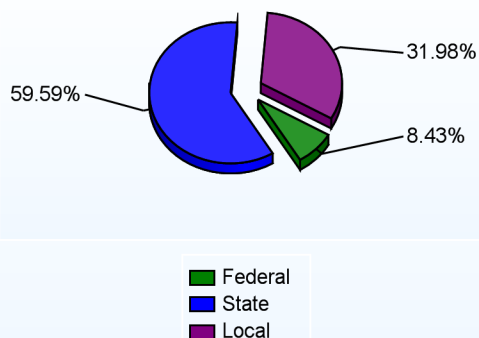
	ELA	Math	ELA Goal	Math Goal
All Students	100	100	95	95
American Indian	*	*	95	95
African American	100	100	95	95
Asian American	*	*	95	95
Hawaiian	*	*	95	95
Hispanic	99	99	95	95
White	100	100	95	95
Multi-Racial	*	*	95	95
English Language Learner	*	*	95	95
Special Education	97	97	95	95
Low Income	100	100	95	95



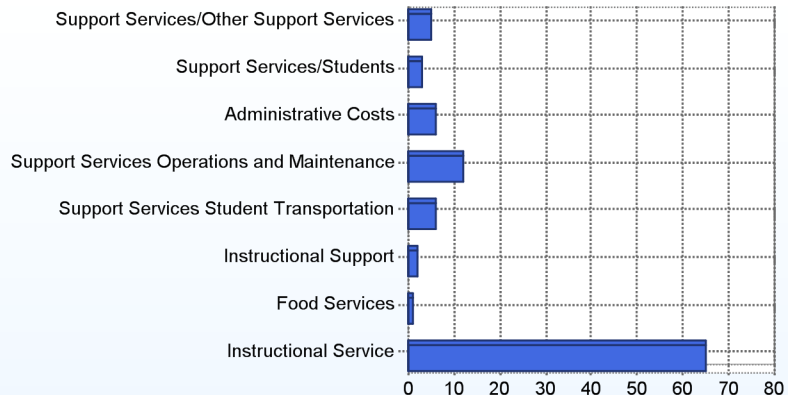
School Finances

District Expenditure per Pupil (2011-2012): \$11,736

District Sources of Revenue (2011-2012)



Percent District Allocation of Current Expenses by Category (2011-2012)



School Salary Allocation

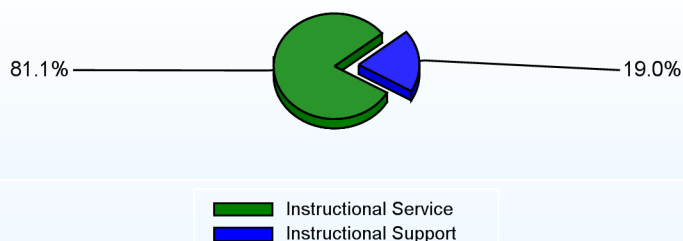
Instructional Service

	2013
Teachers	68.1%
Instructional Support	9.0%
Pupil Support	4.0%
Total	81.1%

Instructional Support

	2013
Administration	6.7%
Secretaries	3.0%
Food Services	3.5%
Maintenance	5.8%
Total	19.0%

Instructional vs. Support (2012-2013)



For further information and detailed reports, visit

<http://profiles.doe.k12.de.us>

or contact your local school district office.

Glossary: <http://profiles.doe.k12.de.us/glossary.aspx>



Delaware Department of Education

John G. Townsend Building
401 Federal Street, Suite #2
Dover, Delaware, 19901 - 3639
Phone: (302) 735-4000

District: Indian River School District

Telephone: (302) 856-1940

Address: 301-A West Market Street, Georgetown DE 19947

Web: www.ge.irsd.k12.de.us

Principal: Neil Stong

AYP: Met

School Demographics

Fall Enrollment		
	2012	2013
Pre-Kindergarten	26	36
Kindergarten	139	110
Grade 1	120	147
Grade 2	82	124
Grade 3	110	86
Grade 4	118	113
Grade 5	89	115
Total	684	731

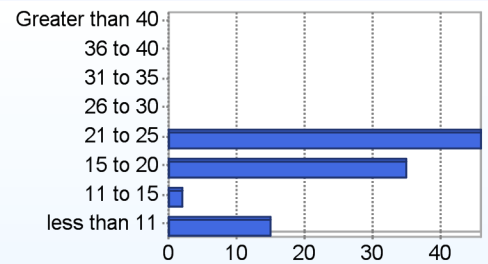
Recently Arrived ELL Students	
	2013
Number of Students Not Tested on ELA Assessment	3

Enrollment by Race/Ethnicity		
	2012	2013
African American	16.5%	17.5%
American Indian	0.9%	0.5%
Asian	0.7%	1.0%
Hawaiian	0.1%	0.1%
Hispanic/Latino	48.1%	47.1%
White	30.0%	30.4%
Multi-Racial	3.7%	3.4%

School Promotion by Grade	
	2012
Pre-Kindergarten	92.3%
Kindergarten	99.3%
Grade 1	98.3%
Grade 2	91.5%
Grade 3	97.3%
Grade 4	94.1%
Grade 5	98.9%

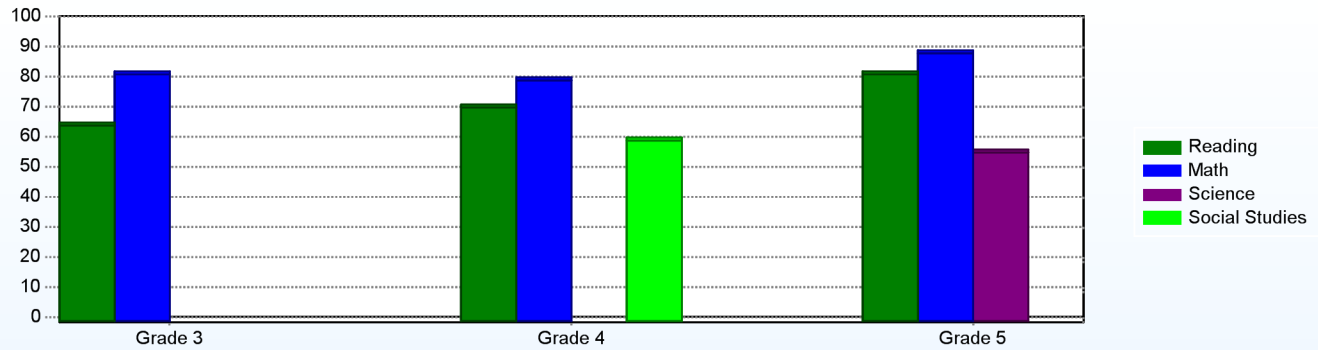
Other Student Characteristics		
	2012	2013
English Language Learner	31.3%	29.6%
Low Income	79.2%	81.4%
Special Education	11.7%	12.7%
Enrolled for Full Year	100.0%	N/A

Class Size (Percentage by Range) (2012-2013)



Student Achievement

Percentage of Students Meeting State Standards (2012-2013)



Exemplary Programs

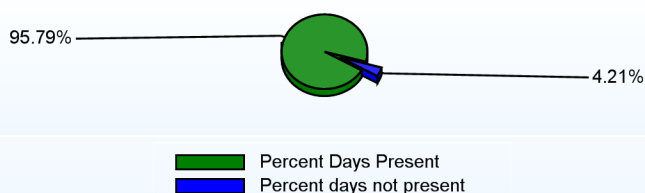
Georgetown Elementary provides students with a wide range of programs and support services. We are fortunate to have a part-time psychologist and speech pathologist, full-time counselor, and a reading specialist on staff. Occupational Therapy and Physical Therapy services are also available on a part-time basis. Members from our community enrich the lives of students from this elementary school through mentoring. In addition, the school offers Title 1, Autism Services, Primary Enrichment Program, Extended School Day, after school programs, and ELL.

Student - School Safety and Discipline

Number of Reported Offenses (2012-2013)

	<u>School</u>	<u>District</u>	<u>State</u>
School Crimes (Title 14, Delaware Code, §4112)		38	584
Department of Education (DOE) Offenses	5	286	10765
All School Safety Policy in Place	Yes		

Percent Days Present (2012-2013)



Suspensions and Expulsions

	<u>2013</u>
Number of Suspensions	84
Number of Expulsions	0
Count of Students Suspended/Expelled	55
September 30 Enrollment	731
Percent of Students Suspended/Expelled	8%
District Percentage	12%
State Percentage	14%

Our Staff

Number of Instructional Staff

	<u>2013</u>
Teachers	47
Librarians	1
Instructional Support	18
Pupil Support	2
Total	68

Staff by Race/Ethnicity

	<u>2013</u>
American Indian	0.0%
African American	11.6%
Asian American	0.0%
Hispanic	4.3%
White	84.1%

Staffing Ratios

	<u>2013</u>
Students Per Teacher	16
Students Per Administrator	366
Students Per Instructional Staff	11
Students Per Pupil Support Staff	366
School Staff Per Administrator	39

Staff Qualifications

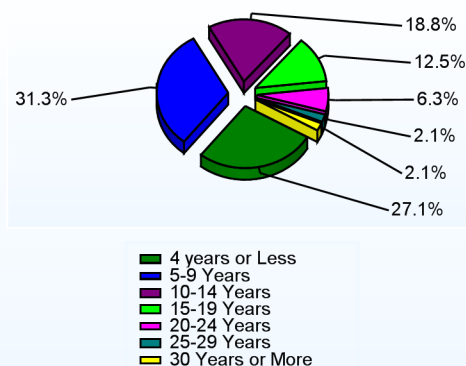
Percentage of Classes Taught by Highly Qualified Teachers (2012-2013)

	<u>Total Classes</u>	<u>% Highly Qualified</u>	<u>% Not Highly Qualified</u>
Reading/ Language Arts	2	100.0%	0.0%
Arts	4	100.0%	0.0%
Elementary General	40	97.5%	2.5%

Education Level

	<u>2013</u>
Percent with Masters Degree and Above	47.8%
Percent Holding National Board for Professional Teaching Standards	2.0%

Years of Teaching Experience (2012-2013)

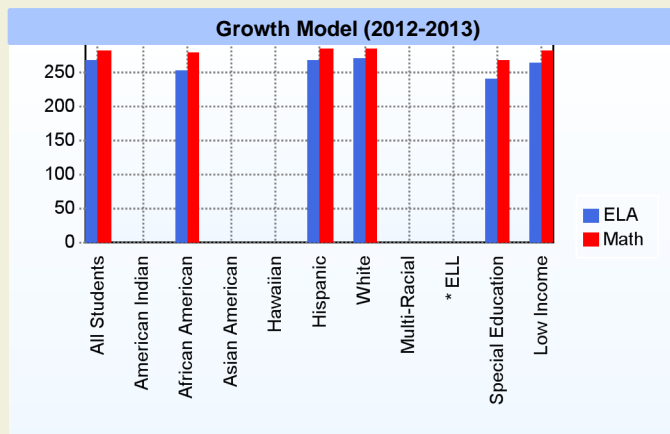
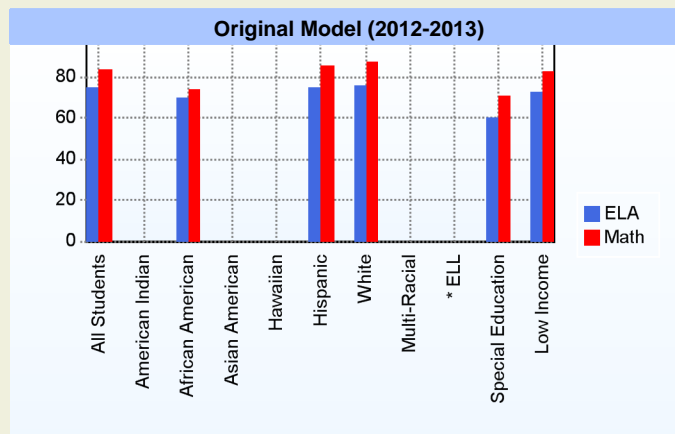


Curriculum Highlights

The curriculum utilized includes the following: McMillan-McGrawHill, Trailblazers Math, Earobics, Market Day/Economics, Smithsonian Science Kits, DIBELS Assessment, Accelerated Reader, and Access Testing.

AYP

Only groups with greater than 40 students are reported



* English Language Learner

* English Language Learner

% Test Participation (2012-2013)

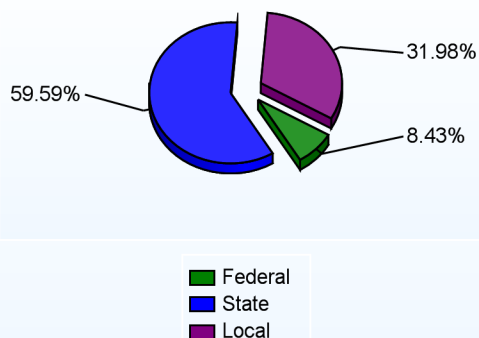
	<u>ELA</u>	<u>Math</u>	<u>ELA Goal</u>	<u>Math Goal</u>
All Students	100	100	95	95
American Indian	*	*	95	95
African American	100	100	95	95
Asian American	*	*	95	95
Hawaiian	*	*	95	95
Hispanic	100	100	95	95
White	99	99	95	95
Multi-Racial	*	*	95	95
English Language Learner	*	*	95	95
Special Education	100	100	95	95
Low Income	100	100	95	95



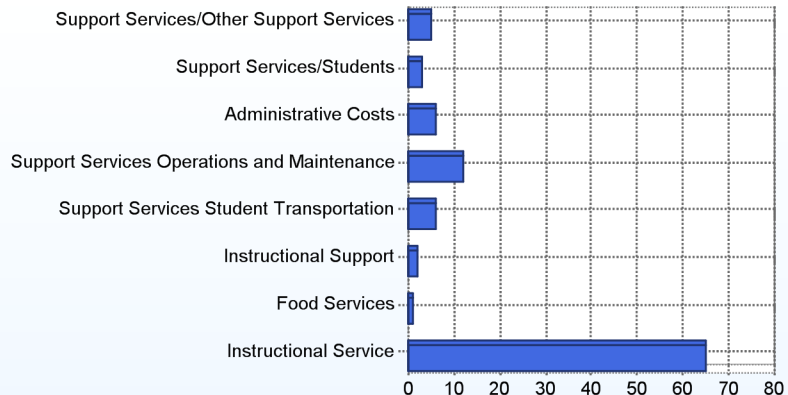
School Finances

District Expenditure per Pupil (2011-2012): \$11,736

District Sources of Revenue (2011-2012)



Percent District Allocation of Current Expenses by Category (2011-2012)



School Salary Allocation

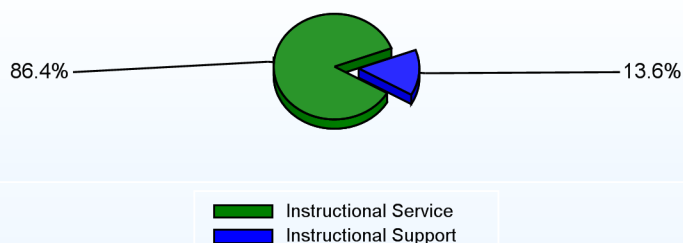
Instructional Service

	2013
Teachers	66.5%
Librarians	2.1%
Instructional Support	13.6%
Pupil Support	4.2%
Total	86.4%

Instructional Support

	2013
Administration	5.1%
Secretaries	2.4%
Food Services	1.6%
Maintenance	4.5%
Total	13.6%

Instructional vs. Support (2012-2013)



For further information and detailed reports, visit

<http://profiles.doe.k12.de.us>

or contact your local school district office.

Glossary: <http://profiles.doe.k12.de.us/glossary.aspx>



Delaware Department of Education

John G. Townsend Building
401 Federal Street, Suite #2
Dover, Delaware, 19901 - 3639
Phone: (302) 735-4000

District: Indian River School District
Address: 120 Atlantic Avenue, Ocean View DE 19970
Principal: John Turssline
AYP: Met

Telephone: (302) 537-2700
Web: www.lb.irsd.k12.de.us

School Demographics

Fall Enrollment		
	2012	2013
Pre-Kindergarten	16	12
Kindergarten	100	108
Grade 1	97	94
Grade 2	120	103
Grade 3	116	116
Grade 4	88	117
Grade 5	123	91
Total	660	641

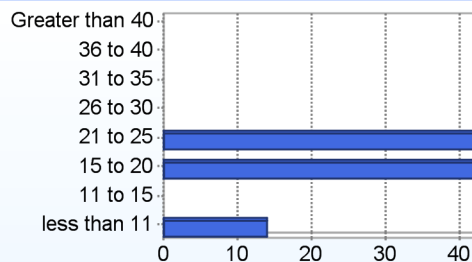
Enrollment by Race/Ethnicity		
	2012	2013
African American	2.9%	3.6%
American Indian	3.0%	1.1%
Asian	1.4%	1.2%
Hispanic/Latino	5.9%	5.1%
White	83.2%	86.7%
Multi-Racial	3.6%	2.2%

School Promotion by Grade	
	2012
Pre-Kindergarten	100.0%
Kindergarten	96.0%
Grade 1	97.9%
Grade 2	100.0%
Grade 3	100.0%
Grade 4	100.0%
Grade 5	100.0%

Recently Arrived ELL Students	
	2013
Number of Students Not Tested on ELA Assessment	1

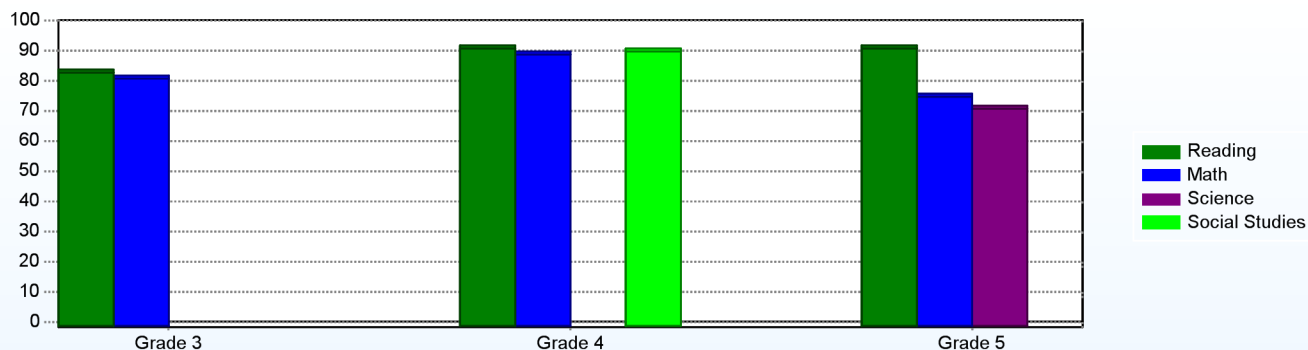
Other Student Characteristics		
	2012	2013
English Language Learner	2.0%	1.6%
Low Income	36.2%	39.3%
Special Education	7.5%	7.9%
Enrolled for Full Year	100.0%	N/A

Class Size (Percentage by Range) (2012-2013)



Student Achievement

Percentage of Students Meeting State Standards (2012-2013)



Exemplary Programs

The exemplary programs available at Lord Baltimore Elementary School include: an outside classroom with a pond, gardens and a natural habitat. An ExCEL program is available for highly able students.

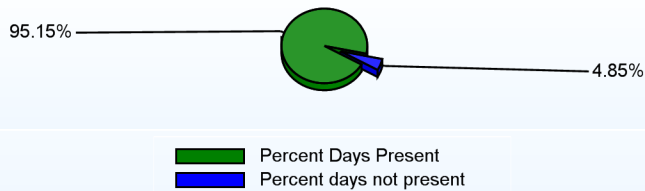
The Meaningful Economics Club, Annual Talent Show, Fun Festival, and Odyssey of the Mind are some of the ways students are encouraged to explore their hidden talents while at the same time develop social skills that promote positive membership within the school community. A Buddy Club has been created for the special needs population along with role models. LB is a Positive Behavior Support School with the LB Sea Star as our mascot, and Star Cash as positive reward incentive for our students. Lord Baltimore has a large volunteer program and a mentor program. In addition, Lord Baltimore has an active PTO which plans numerous fundraising and child centered activities throughout the year.

Student - School Safety and Discipline

Number of Reported Offenses (2012-2013)

	<u>School</u>	<u>District</u>	<u>State</u>
School Crimes (Title 14, Delaware Code, §4112)		38	579
Department of Education (DOE) Offenses	16	286	10732
All School Safety Policy in Place	Yes		

Percent Days Present (2012-2013)



Suspensions and Expulsions

	<u>2013</u>
Number of Suspensions	17
Number of Expulsions	0
Count of Students Suspended/Expelled	15
September 30 Enrollment	641
Percent of Students Suspended/Expelled	2%
District Percentage	12%
State Percentage	14%

Our Staff

Number of Instructional Staff

	<u>2013</u>
Teachers	36
Librarians	1
Instructional Support	5
Pupil Support	1
Total	43

Staff by Race/Ethnicity

	<u>2013</u>
American Indian	0.0%
African American	2.3%
Asian American	0.0%
Hispanic	0.0%
White	97.7%

Staffing Ratios

	<u>2013</u>
Students Per Teacher	18
Students Per Administrator	321
Students Per Instructional Staff	15
Students Per Pupil Support Staff	641
School Staff Per Administrator	27

Staff Qualifications

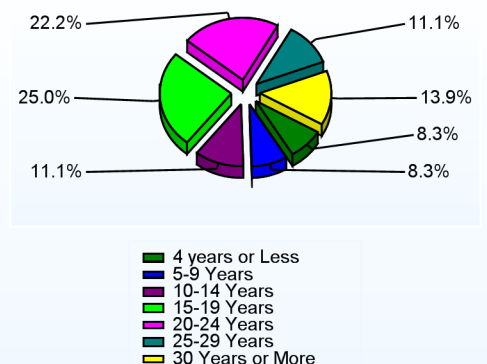
Percentage of Classes Taught by Highly Qualified Teachers (2012-2013)

	<u>Total Classes</u>	<u>% Highly Qualified</u>	<u>% Not Highly Qualified</u>
Reading/ Language Arts	1	100.0%	0.0%
Arts	3	100.0%	0.0%
Elementary General	34	100.0%	0.0%

Education Level

	<u>2013</u>
Percent with Masters Degree and Above	62.8%
Percent Holding National Board for Professional Teaching Standards	8.1%

Years of Teaching Experience (2012-2013)

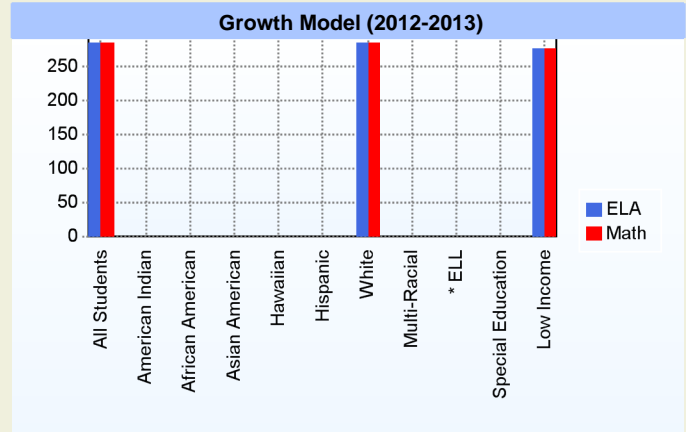
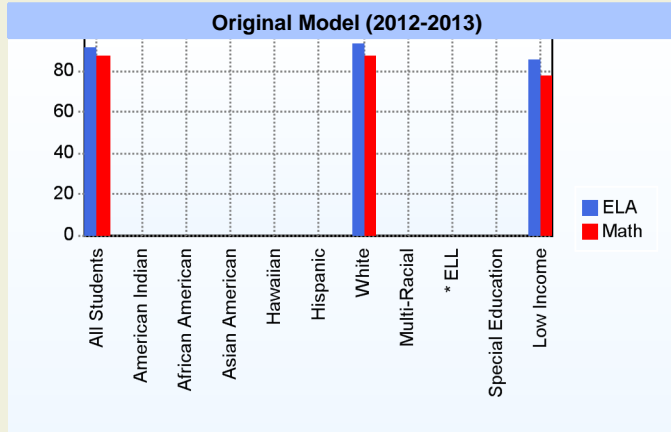


Curriculum Highlights

Lord Baltimore Elementary School students have made excellent progress in meeting the state standards. The staff at Lord Baltimore works collaboratively to plan and develop rigorous lessons that are aligned with Common Core State Standards. Using Learning Focused Strategies, teachers center student learning on key ideas which are guided by essential questions. In addition meaningful classroom assessments are designed to measure, and monitor student progress toward mastery of the key ideas. State test results (DCAS), DIBELS data, and local reading/math assessment data, are used by teachers to develop academic goals for each student. Teachers meet weekly as Professional Learning Communities to discuss student progress towards academic goals. Response to Intervention (RTI) has been implemented to address the unique individual needs of students.

AYP

Only groups with greater than 40 students are reported



* English Language Learner

* English Language Learner

% Test Participation (2012-2013)

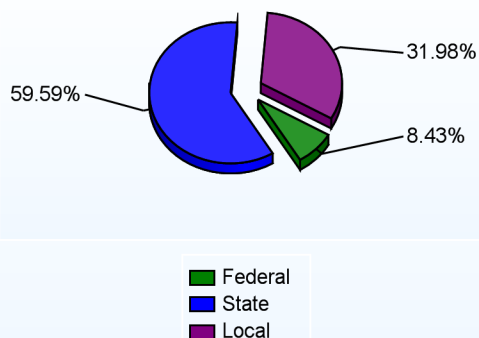
	<u>ELA</u>	<u>Math</u>	<u>ELA Goal</u>	<u>Math Goal</u>
All Students	100	100	95	95
American Indian	*	*	95	95
African American	*	*	95	95
Asian American	*	*	95	95
Hawaiian	*	*	95	95
Hispanic	*	*	95	95
White	100	100	95	95
Multi-Racial	*	*	95	95
English Language Learner	*	*	95	95
Special Education	*	*	95	95
Low Income	100	100	95	95



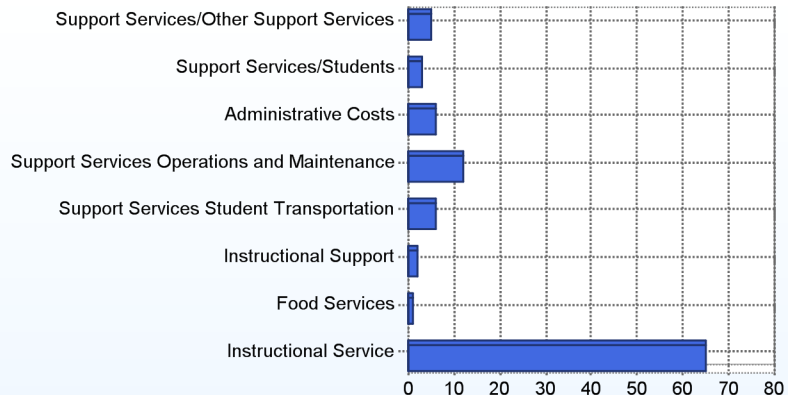
School Finances

District Expenditure per Pupil (2011-2012): \$11,736

District Sources of Revenue (2011-2012)



Percent District Allocation of Current Expenses by Category (2011-2012)



School Salary Allocation

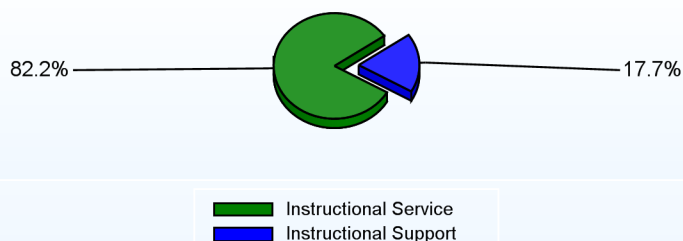
Instructional Service

	2013
Teachers	73.7%
Librarians	2.6%
Instructional Support	4.3%
Pupil Support	1.6%
Total	82.2%

Instructional Support

	2013
Administration	6.3%
Secretaries	2.9%
Food Services	2.5%
Maintenance	6.0%
Total	17.7%

Instructional vs. Support (2012-2013)



For further information and detailed reports, visit

<http://profiles.doe.k12.de.us>

or contact your local school district office.

Glossary: <http://profiles.doe.k12.de.us/glossary.aspx>



Delaware Department of Education

John G. Townsend Building
401 Federal Street, Suite #2
Dover, Delaware, 19901 - 3639
Phone: (302) 735-4000

District: Indian River School District
Address: 29346 Iron Branch Road, Millsboro DE 19966
Principal: Kelly Dorman
AYP: Met

Telephone: (302) 934-3222
Web: www.em.irsd.k12.de.us

School Demographics

Fall Enrollment		
	2012	2013
Pre-Kindergarten	19	13
Kindergarten	126	105
Grade 1	126	137
Grade 2	111	125
Grade 3	97	115
Grade 4	128	93
Grade 5	122	135
Total	729	723

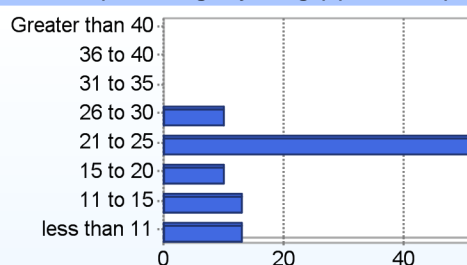
Recently Arrived ELL Students	
	2013
Number of Students Not Tested on ELA Assessment	1

Enrollment by Race/Ethnicity		
	2012	2013
African American	19.3%	17.4%
American Indian	1.5%	2.2%
Asian	2.1%	2.1%
Hispanic/Latino	17.7%	17.6%
White	55.3%	55.3%
Multi-Racial	4.1%	5.4%

School Promotion by Grade	
	2012
Pre-Kindergarten	100.0%
Kindergarten	99.2%
Grade 1	96.8%
Grade 2	99.1%
Grade 3	100.0%
Grade 4	100.0%
Grade 5	100.0%

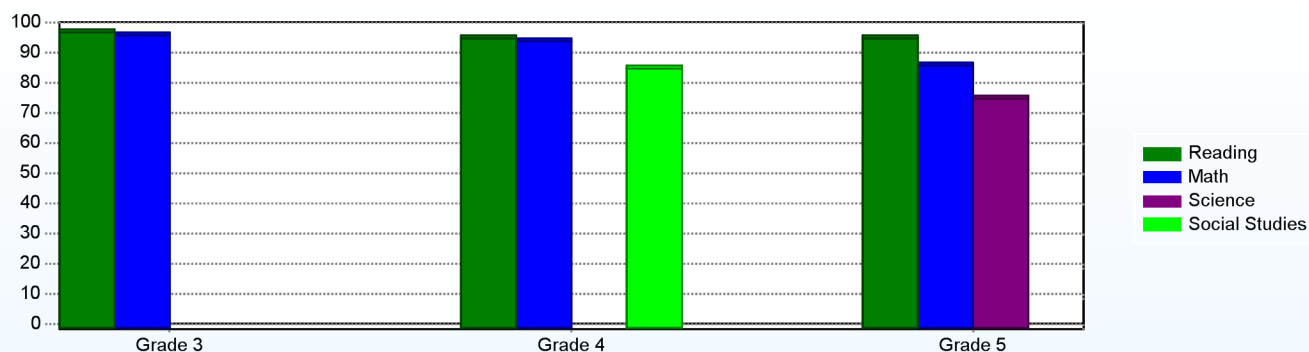
Other Student Characteristics		
	2012	2013
English Language Learner	8.3%	7.5%
Low Income	65.2%	64.6%
Special Education	9.2%	6.6%
Enrolled for Full Year	100.0%	N/A

Class Size (Percentage by Range) (2012-2013)



Student Achievement

Percentage of Students Meeting State Standards (2012-2013)



Exemplary Programs

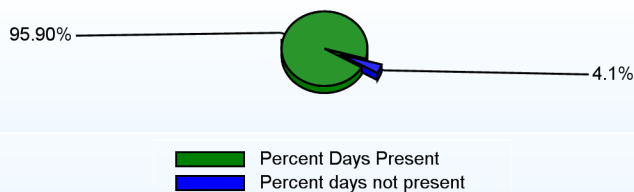
At East Millsboro Elementary School we put children first as we work to create a motivating and challenging learning environment. Programs for student achievement are designed to provide instruction for the varied needs and interests of students. ExCEL is an academic enrichment program for gifted students in grade three, four and five that encourages critical and creative thinking. East Millsboro provides small group instructional opportunities in both reading and math. Our mentoring program pairs community members with students who would benefit as well as our Positive Behavior Support Plan provides consistent expectations and rewards across the grade levels. Band and choral opportunities are available for upper elementary students as well as supplemental computerized curriculums in reading and math allow students to advance through individualized software at all grade-levels. At East Millsboro we work hard to reach all students through a variety of effective instructional strategies.

Student - School Safety and Discipline

Number of Reported Offenses (2012-2013)

	<u>School</u>	<u>District</u>	<u>State</u>
School Crimes (Title 14, Delaware Code, §4112)		38	579
Department of Education (DOE) Offenses	6	286	10732
All School Safety Policy in Place	Yes		

Percent Days Present (2012-2013)



Suspensions and Expulsions

	<u>2013</u>
Number of Suspensions	30
Number of Expulsions	0
Count of Students Suspended/Expelled	23
September 30 Enrollment	723
Percent of Students Suspended/Expelled	3%
District Percentage	12%
State Percentage	14%

Our Staff

Number of Instructional Staff

	<u>2013</u>
Teachers	44
Instructional Support	7
Pupil Support	1
Total	52

Staff by Race/Ethnicity

	<u>2013</u>
American Indian	0.0%
African American	3.8%
Asian American	0.0%
Hispanic	0.0%
White	96.2%

Staffing Ratios

	<u>2013</u>
Students Per Teacher	16
Students Per Administrator	362
Students Per Instructional Staff	14
Students Per Pupil Support Staff	723
School Staff Per Administrator	33

Staff Qualifications

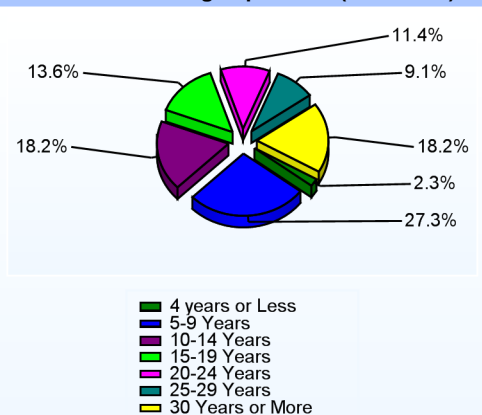
Percentage of Classes Taught by Highly Qualified Teachers (2012-2013)

	<u>Total Classes</u>	<u>% Highly Qualified</u>	<u>% Not Highly Qualified</u>
Reading/ Language Arts	1	100.0%	0.0%
Arts	2	100.0%	0.0%
Elementary General	39	100.0%	0.0%

Education Level

	<u>2013</u>
Percent with Masters Degree and Above	69.2%
Percent Holding National Board for Professional Teaching Standards	13.3%

Years of Teaching Experience (2012-2013)

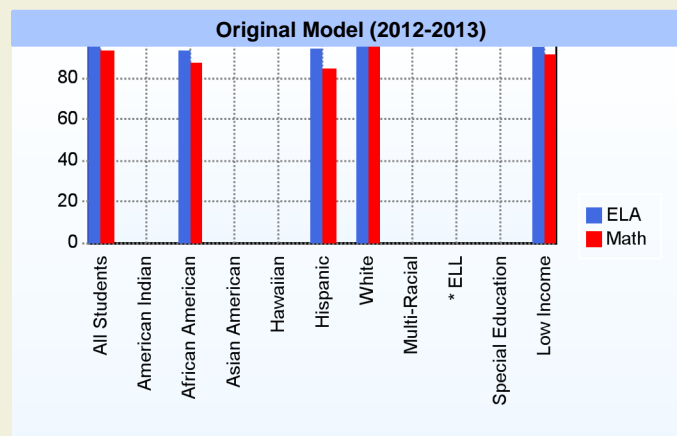


Curriculum Highlights

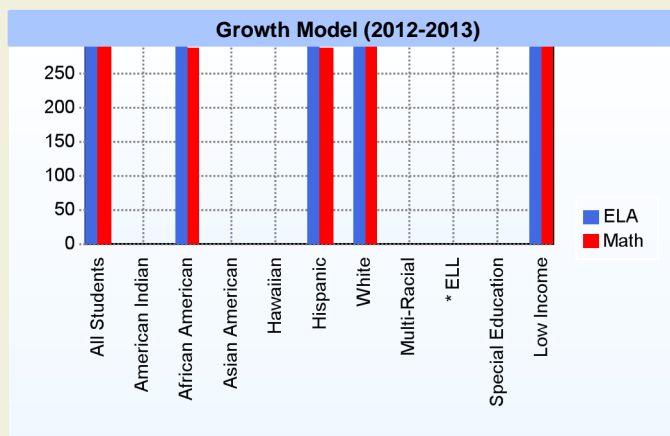
Tightly coordinated instruction, high expectations, and careful planning and monitoring are pathways to student achievement. Using the Common Core Standards, reading expectations are supported by leveled readers and MacMillan McGraw-Hill "Treasures". These materials are designed to assist all students to reading success through the mastery of necessary skills and strategies. Five key facets of reading are addressed. They include teaching students to hear, manipulate, and identify the individual sounds needed for reading (Phonemic Awareness). Students learn the relationships between sounds and letters (Phonics) and how to blend sound to make words. Fluency and Vocabulary are the bridge to Comprehension. Assessment pieces, including the DIBELS and the DCAS, help monitor student progress. The Trail Blazers Math series emphasizes reasoning and problem solving. The Smithsonian Curriculum provides students with the conceptual & procedural foundations needed in the science realm.

AYP

Only groups with greater than 40 students are reported



* English Language Learner



* English Language Learner

% Test Participation (2012-2013)

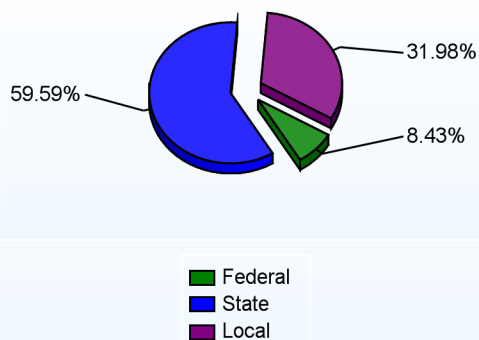
	ELA	Math	ELA Goal	Math Goal
All Students	100	100	95	95
American Indian	*	*	95	95
African American	100	100	95	95
Asian American	*	*	95	95
Hawaiian	*	*	95	95
Hispanic	100	100	95	95
White	100	100	95	95
Multi-Racial	*	*	95	95
English Language Learner	*	*	95	95
Special Education	*	*	95	95
Low Income	100	100	95	95



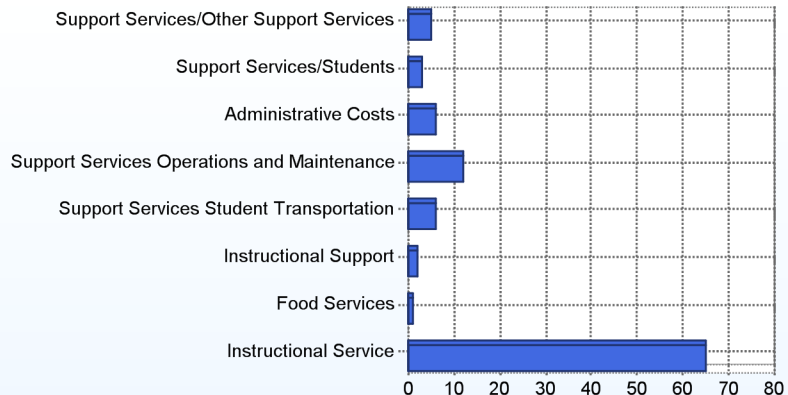
School Finances

District Expenditure per Pupil (2011-2012): \$11,736

District Sources of Revenue (2011-2012)



Percent District Allocation of Current Expenses by Category (2011-2012)



School Salary Allocation

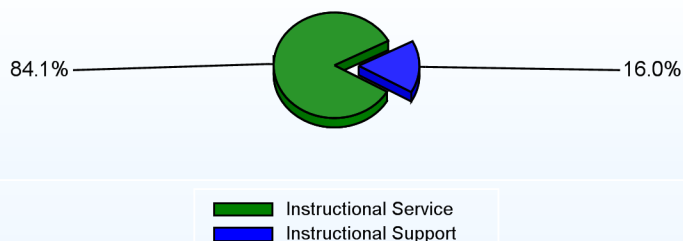
Instructional Service

	2013
Teachers	76.6%
Instructional Support	5.1%
Pupil Support	2.4%
Total	84.1%

Instructional Support

	2013
Administration	5.2%
Secretaries	2.2%
Food Services	3.0%
Maintenance	5.6%
Total	16.0%

Instructional vs. Support (2012-2013)



For further information and detailed reports, visit

<http://profiles.doe.k12.de.us>

or contact your local school district office.

Glossary: <http://profiles.doe.k12.de.us/glossary.aspx>



Delaware Department of Education

John G. Townsend Building
401 Federal Street, Suite #2
Dover, Delaware, 19901 - 3639
Phone: (302) 735-4000

District: Indian River School District
Address: 41 Bethany Road, Selbyville DE 19975
Principal: Brandon Snyder
AYP: Met

Telephone: (302) 436-1040
Web: www.ps.irsd.k12.de.us

School Demographics

Fall Enrollment		
	2012	2013
Pre-Kindergarten	14	11
Kindergarten	74	70
Grade 1	68	70
Grade 2	62	62
Grade 3	51	60
Grade 4	59	46
Grade 5	46	60
Total	374	379

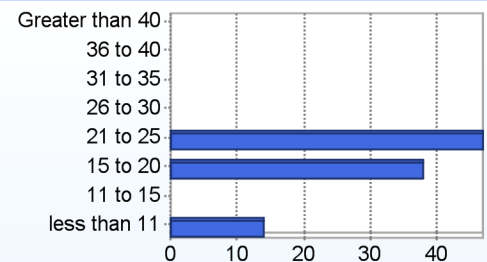
Recently Arrived ELL Students	
	2013
Number of Students Not Tested on ELA Assessment	2

Enrollment by Race/Ethnicity		
	2012	2013
African American	21.4%	21.1%
American Indian	0.3%	0.3%
Asian	1.9%	2.1%
Hispanic/Latino	19.8%	21.1%
White	50.5%	48.8%
Multi-Racial	6.1%	6.6%

School Promotion by Grade	
	2012
Pre-Kindergarten	100.0%
Kindergarten	98.6%
Grade 1	98.5%
Grade 2	100.0%
Grade 3	100.0%
Grade 4	100.0%
Grade 5	100.0%

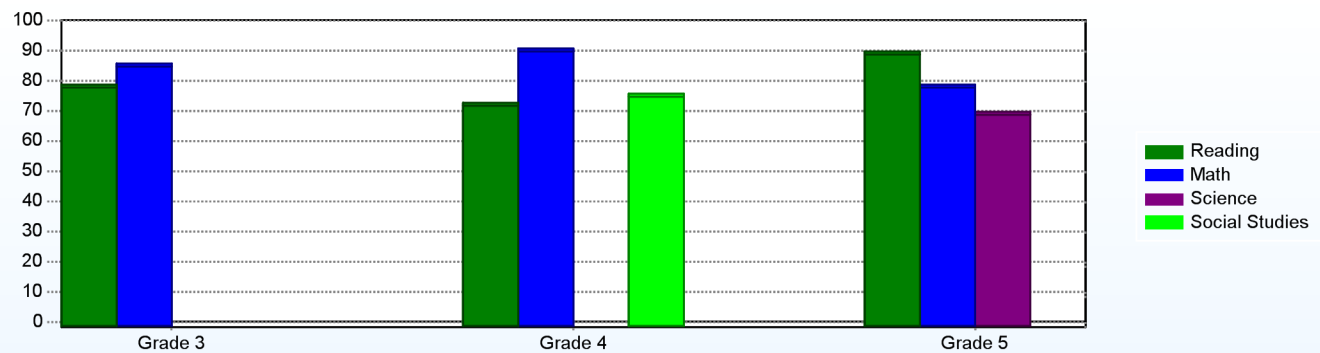
Other Student Characteristics		
	2012	2013
English Language Learner	13.6%	14.1%
Low Income	68.6%	73.1%
Special Education	10.8%	11.4%
Enrolled for Full Year	100.0%	N/A

Class Size (Percentage by Range) (2012-2013)



Student Achievement

Percentage of Students Meeting State Standards (2012-2013)



Exemplary Programs

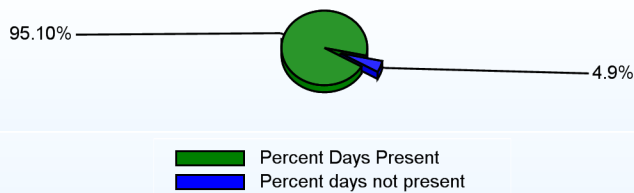
Phillip C. Showell Elementary School staff members are committed to creating students who are well-rounded and good citizens. We strive to help our students attain the academic skills required to reason, communicate, and live with dignity in a literate and diverse society. Our staff provides instruction that allows all students to reach their fullest potential. Partnering with families and the community, we assist students in gaining academic competence and responsibility to find success through their school years and into the world of work. Special programs of note are our Positive Behavior Support System, Community Mentors, High School Partnership, and Intervention Supports for all levels of learners.

Student - School Safety and Discipline

Number of Reported Offenses (2012-2013)

	<u>School</u>	<u>District</u>	<u>State</u>
School Crimes (Title 14, Delaware Code, §4112)		38	579
Department of Education (DOE) Offenses	11	286	10732
All School Safety Policy in Place	Yes		

Percent Days Present (2012-2013)



Suspensions and Expulsions

	<u>2013</u>
Number of Suspensions	14
Number of Expulsions	0
Count of Students Suspended/Expelled	7
September 30 Enrollment	379
Percent of Students Suspended/Expelled	2%
District Percentage	12%
State Percentage	14%

Our Staff

Number of Instructional Staff

	<u>2013</u>
Teachers	23
Librarians	1
Instructional Support	5
Pupil Support	2
Total	31

Staff by Race/Ethnicity

	<u>2013</u>
American Indian	0.0%
African American	3.2%
Asian American	0.0%
Hispanic	3.2%
White	93.5%

Staffing Ratios

	<u>2013</u>
Students Per Teacher	17
Students Per Administrator	379
Students Per Instructional Staff	13
Students Per Pupil Support Staff	190
School Staff Per Administrator	40

Staff Qualifications

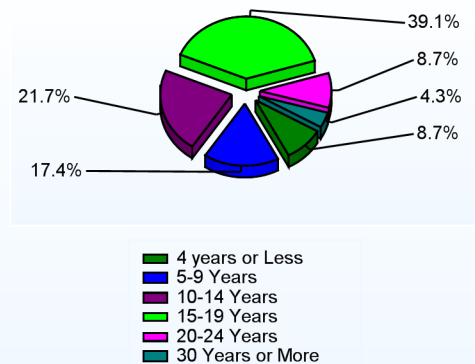
Percentage of Classes Taught by Highly Qualified Teachers (2012-2013)

	<u>Total Classes</u>	<u>% Highly Qualified</u>	<u>% Not Highly Qualified</u>
Arts	3	100.0%	0.0%
Elementary General	22	100.0%	0.0%

Education Level

	<u>2013</u>
Percent with Masters Degree and Above	45.2%
Percent Holding National Board for Professional Teaching Standards	4.3%

Years of Teaching Experience (2012-2013)

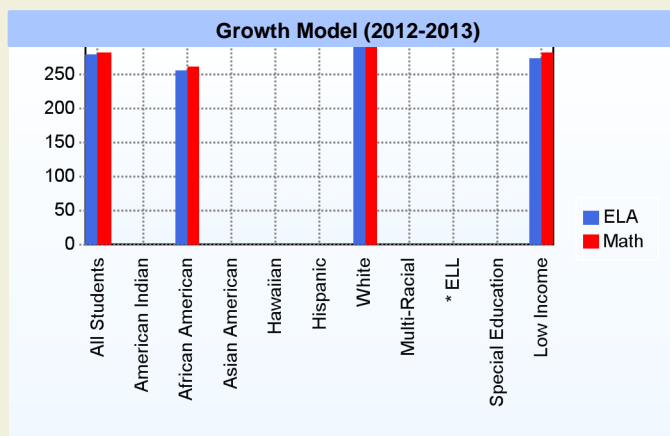
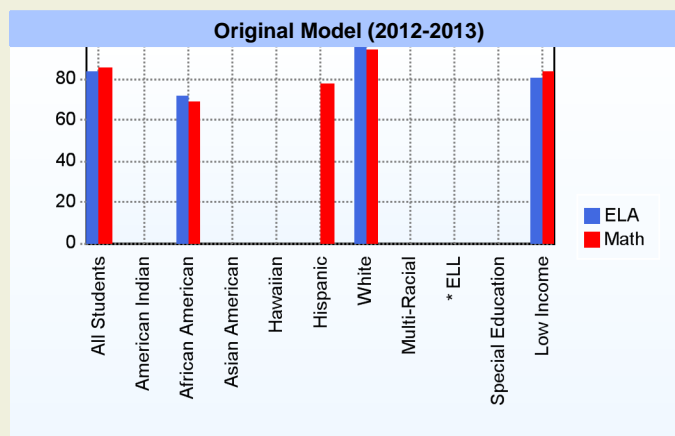


Curriculum Highlights

PCS staff members implement standards-based programs including Math Trailblazers, Smithsonian Science Kits, and a balanced ELA program. Teachers also utilize best practice strategies from the Learning Focused Schools model to provide effective instruction in all areas. PCS staff members also participate in ongoing professional development in the areas of differentiated instruction, intervention approaches, and establishing positive classroom climate.

AYP

Only groups with greater than 40 students are reported



* English Language Learner

* English Language Learner

% Test Participation (2012-2013)

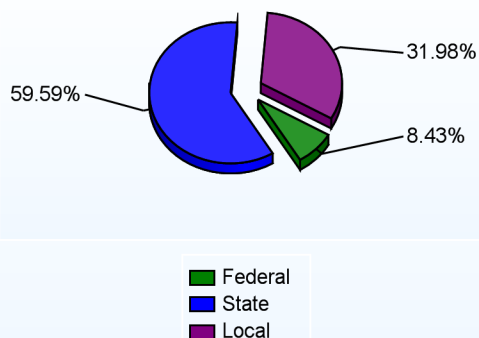
	<u>ELA</u>	<u>Math</u>	<u>ELA Goal</u>	<u>Math Goal</u>
All Students	99	100	95	95
American Indian	*	*	95	95
African American	100	100	95	95
Asian American	*	*	95	95
Hawaiian	*	*	95	95
Hispanic	*	*	95	95
White	99	100	95	95
Multi-Racial	*	*	95	95
English Language Learner	*	*	95	95
Special Education	*	*	95	95
Low Income	99	100	95	95



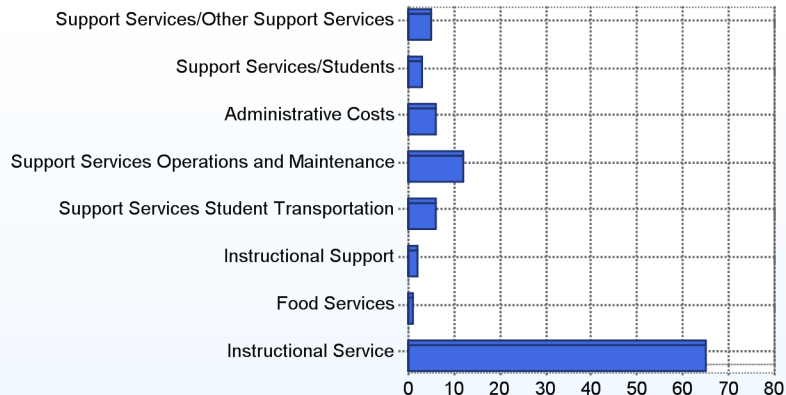
School Finances

District Expenditure per Pupil (2011-2012): \$11,736

District Sources of Revenue (2011-2012)



Percent District Allocation of Current Expenses by Category (2011-2012)



School Salary Allocation

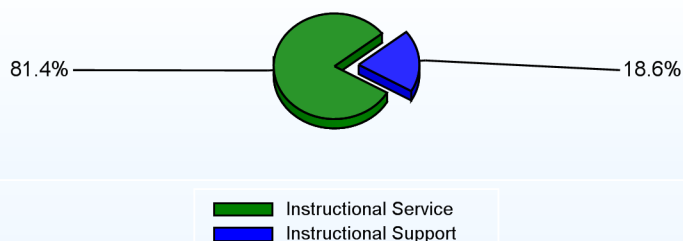
Instructional Service

	2013
Teachers	65.3%
Librarians	3.5%
Instructional Support	6.4%
Pupil Support	6.2%
Total	81.4%

Instructional Support

	2013
Administration	5.1%
Secretaries	4.3%
Food Services	3.6%
Maintenance	5.6%
Total	18.6%

Instructional vs. Support (2012-2013)



For further information and detailed reports, visit

<http://profiles.doe.k12.de.us>

or contact your local school district office.

Glossary: <http://profiles.doe.k12.de.us/glossary.aspx>



Delaware Department of Education

John G. Townsend Building
401 Federal Street, Suite #2
Dover, Delaware, 19901 - 3639
Phone: (302) 735-4000

District: Indian River School District

Telephone: (302) 934-3200

Address: 302 East State Street, Millsboro DE 19966

Web: www.edline.net/pages/Millsboro_Middle_School

Principal: Renee Jerns

AYP: Met

School Demographics

Fall Enrollment		
	2012	2013
Grade 6	213	205
Grade 7	202	217
Grade 8	186	218
Total	601	640

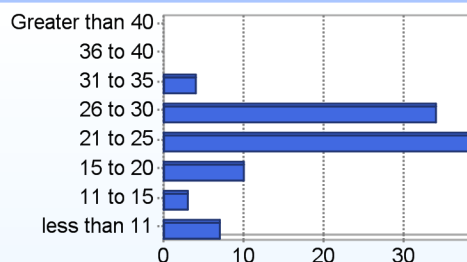
Recently Arrived ELL Students	
	2013
Number of Students Not Tested on ELA Assessment	4

Enrollment by Race/Ethnicity		
	2012	2013
African American	18.1%	15.9%
American Indian	1.2%	0.5%
Asian	1.0%	2.0%
Hispanic/Latino	12.8%	13.6%
White	60.2%	61.7%
Multi-Racial	6.7%	6.3%

School Promotion by Grade	
	2012
Grade 6	100.0%
Grade 7	100.0%
Grade 8	100.0%

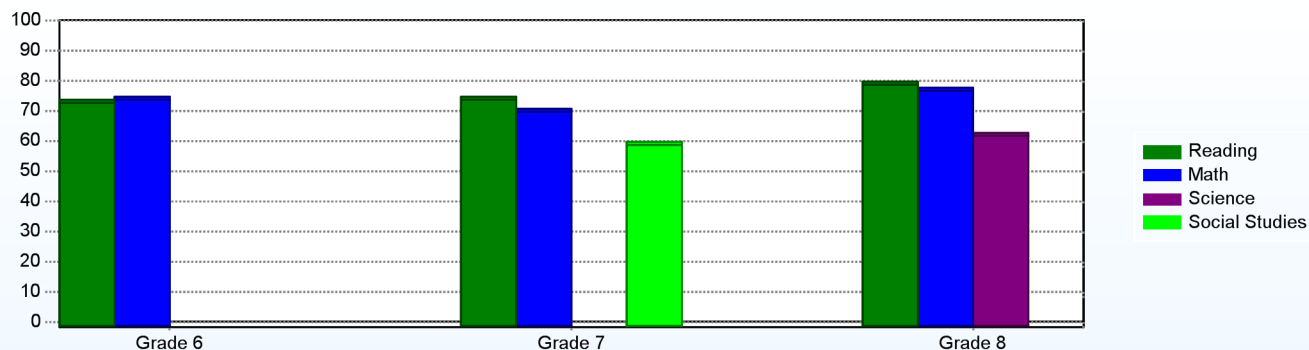
Other Student Characteristics		
	2012	2013
English Language Learner	0.3%	1.6%
Low Income	66.9%	70.3%
Special Education	15.3%	16.4%
Enrolled for Full Year	100.0%	N/A

Class Size (Percentage by Range) (2012-2013)



Student Achievement

Percentage of Students Meeting State Standards (2012-2013)



Exemplary Programs

At Millsboro Middle School, we support student growth through programs aimed at developing the academic, emotional and social well-being of all students. Some of the exemplary programs we offer are, but not limited to: Advancement Via Individual Determination (AVID), Academic Challenge, Positive Behavior System (PBS), Business Professionals of America (BPA), Future Farmers of America (FFA), National Junior Honor Society, Upward Bound, Science Olympiad, Odyssey of the Mind, Math League, Talent Search, and Rachel's Challenge (an anti-bullying/anti-violence program). We also offer exploratory programs in the Performing Arts, Business/Computers, Art, Spanish, and Agriculture aimed at preparing students for college and career pathways at the high school level.

Student - School Safety and Discipline

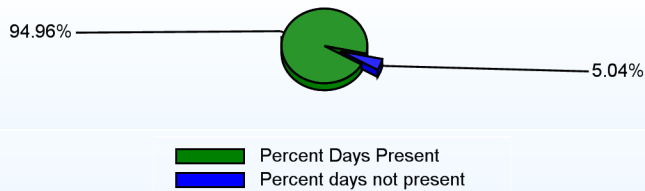
Number of Reported Offenses (2012-2013)

	<u>School</u>	<u>District</u>	<u>State</u>
School Crimes (Title 14, Delaware Code, §4112)	6	38	579
Department of Education (DOE) Offenses	13	286	10732

Suspensions and Expulsions

	<u>2013</u>
Number of Suspensions	256
Number of Expulsions	12
Count of Students Suspended/Expelled	125
September 30 Enrollment	640
Percent of Students Suspended/Expelled	20%
District Percentage	12%
State Percentage	14%

Percent Days Present (2012-2013)



Our Staff

Number of Instructional Staff

	<u>2013</u>
Teachers	46
Instructional Support	6
Pupil Support	5
Total	57

Staff by Race/Ethnicity

	<u>2013</u>
American Indian	0.0%
African American	7.0%
Asian American	1.8%
Hispanic	0.0%
White	91.2%

Staffing Ratios

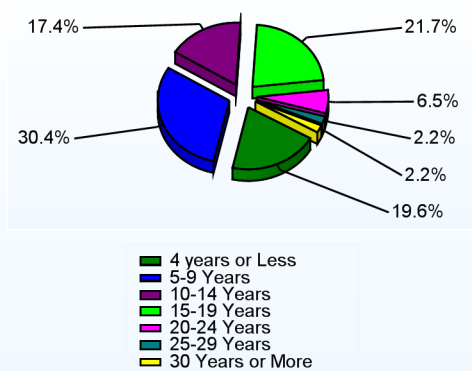
	<u>2013</u>
Students Per Teacher	14
Students Per Administrator	640
Students Per Instructional Staff	12
Students Per Pupil Support Staff	128
School Staff Per Administrator	73

Staff Qualifications

Percentage of Classes Taught by Highly Qualified Teachers (2012-2013)

	<u>Total Classes</u>	<u>% Highly Qualified</u>	<u>% Not Highly Qualified</u>
Reading/ Language Arts	32	100.0%	0.0%
Arts	20	100.0%	0.0%
Foreign Languages	19	100.0%	0.0%
Science	20	100.0%	0.0%
Mathematics	37	94.6%	5.4%
Social Studies	24	100.0%	0.0%
Elementary General	4	100.0%	0.0%

Years of Teaching Experience (2012-2013)



Education Level

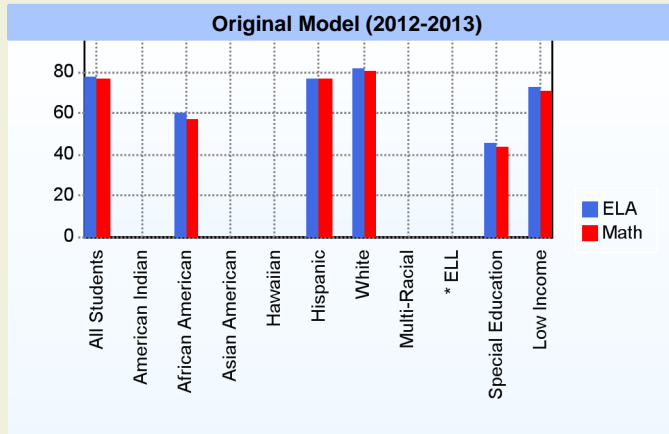
	<u>2013</u>
Percent with Masters Degree and Above	52.6%
Percent Holding National Board for Professional Teaching Standards	6.4%

Curriculum Highlights

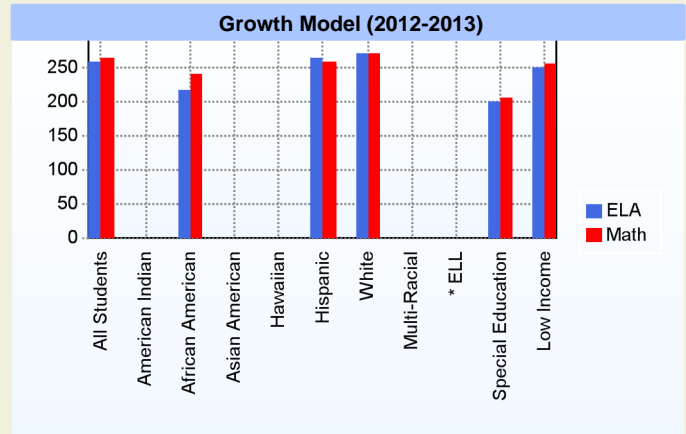
With a focus on school-wide reading and writing literacy, the staff at MMS uses data-driven instruction to progress student achievement in meeting the Common Core State Standards for college and career readiness. This instruction is differentiated for all students based on academic needs. We support struggling students through our Response to Intervention (RtI) model, as well as our AVID program, a "college readiness system designed to increase school-wide learning and performance through a curriculum focused on rigorous standards, WICR (Writing, Inquiry, Collaboration, Reading strategies), Cornell note-taking, and Socratic Seminars." For students who excel, we offer honors courses using College Board's Springboard curricula in reading and math, enrichment activities through RtI, and challenging exemplary extra-curricular programs. As a result of our exemplary programs and curricula, MMS is home to several Carson Scholar award recipients and Merit Scholars.

AYP

Only groups with greater than 40 students are reported



* English Language Learner



* English Language Learner

% Test Participation (2012-2013)

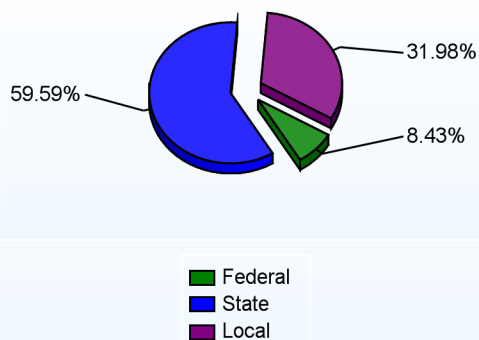
	ELA	Math	ELA Goal	Math Goal
All Students	100	100	95	95
American Indian	*	*	95	95
African American	100	100	95	95
Asian American	*	*	95	95
Hawaiian	*	*	95	95
Hispanic	100	100	95	95
White	100	100	95	95
Multi-Racial	100	100	95	95
English Language Learner	*	*	95	95
Special Education	100	100	95	95
Low Income	100	100	95	95



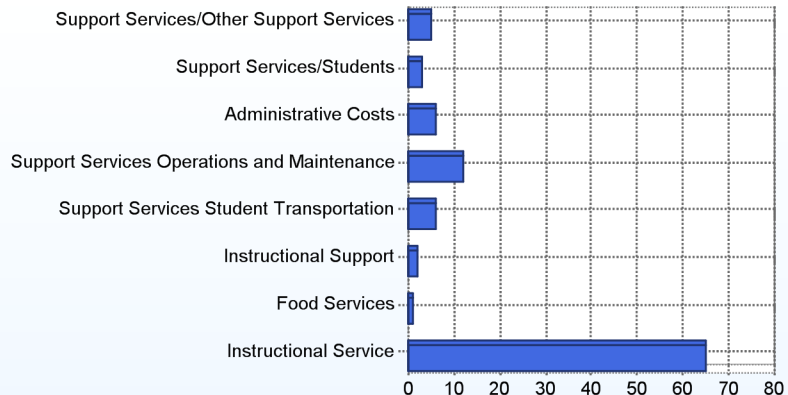
School Finances

District Expenditure per Pupil (2011-2012): \$11,736

District Sources of Revenue (2011-2012)



Percent District Allocation of Current Expenses by Category (2011-2012)



School Salary Allocation

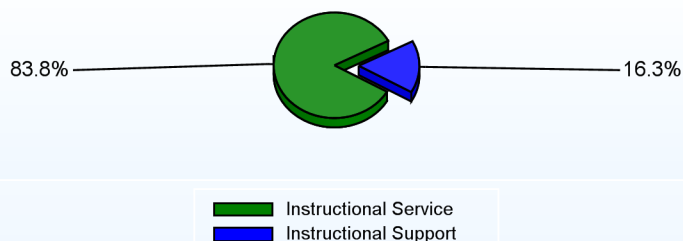
Instructional Service

	2013
Teachers	72.0%
Instructional Support	5.0%
Pupil Support	6.8%
Total	83.8%

Instructional Support

	2013
Administration	2.9%
Secretaries	4.0%
Food Services	2.1%
Maintenance	7.3%
Total	16.3%

Instructional vs. Support (2012-2013)



For further information and detailed reports, visit

<http://profiles.doe.k12.de.us>

or contact your local school district office.

Glossary: <http://profiles.doe.k12.de.us/glossary.aspx>



Delaware Department of Education

John G. Townsend Building
401 Federal Street, Suite #2
Dover, Delaware, 19901 - 3639
Phone: (302) 735-4000

District: Indian River School District
Address: 80 Bethany Rd., Selbyville DE 19975
Principal: Mike King
AYP: Met

Telephone: (302) 436-1020
Web: www.sm.irsd.k12.de.us

School Demographics

Fall Enrollment		
	2012	2013
Grade 6	214	236
Grade 7	218	201
Grade 8	214	232
Total	646	669

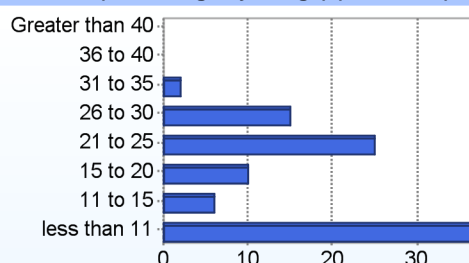
Recently Arrived ELL Students	
	2013
Number of Students Not Tested on ELA Assessment	4

Enrollment by Race/Ethnicity		
	2012	2013
African American	14.7%	15.4%
American Indian	1.4%	1.3%
Asian	1.7%	1.6%
Hispanic/Latino	14.4%	14.5%
White	65.6%	64.4%
Multi-Racial	2.2%	2.7%

School Promotion by Grade	
	2012
Grade 6	99.5%
Grade 7	100.0%
Grade 8	99.5%

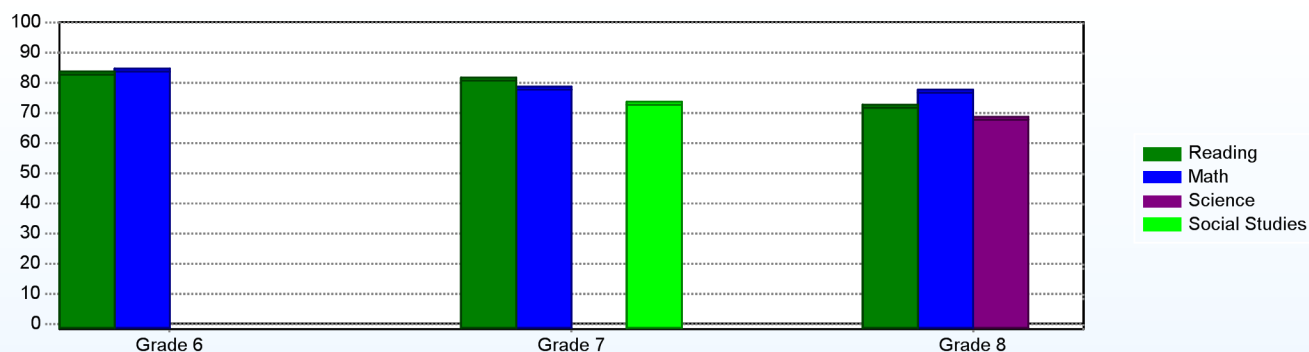
Other Student Characteristics		
	2012	2013
English Language Learner	1.4%	1.5%
Low Income	56.0%	58.9%
Special Education	15.9%	15.7%
Enrolled for Full Year	100.0%	N/A

Class Size (Percentage by Range) (2012-2013)



Student Achievement

Percentage of Students Meeting State Standards (2012-2013)



Exemplary Programs

Selbyville Middle School has been recognized by the Delaware State Chamber of Commerce for the "Meet the Challenge" program and also by Lt. Governor Carney as a Model of Excellence School. The school continues to strive for excellence and has been a superior school the last two years.

Student - School Safety and Discipline

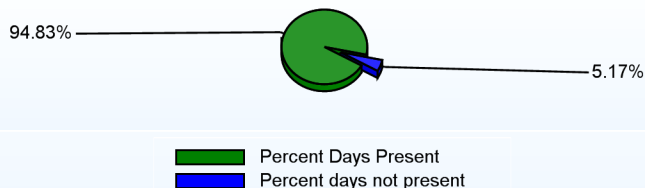
Number of Reported Offenses (2012-2013)

	<u>School</u>	<u>District</u>	<u>State</u>
School Crimes (Title 14, Delaware Code, §4112)	9	38	579
Department of Education (DOE) Offenses	43	286	10732
All School Safety Policy in Place	Yes		

Suspensions and Expulsions

	<u>2013</u>
Number of Suspensions	267
Number of Expulsions	7
Count of Students Suspended/Expelled	128
September 30 Enrollment	669
Percent of Students Suspended/Expelled	19%
District Percentage	12%
State Percentage	14%

Percent Days Present (2012-2013)



Our Staff

Number of Instructional Staff

	<u>2013</u>
Teachers	42
Instructional Support	13
Pupil Support	4
Total	59

Staff by Race/Ethnicity

	<u>2013</u>
American Indian	0.0%
African American	10.2%
Asian American	0.0%
Hispanic	1.7%
White	88.1%

Staffing Ratios

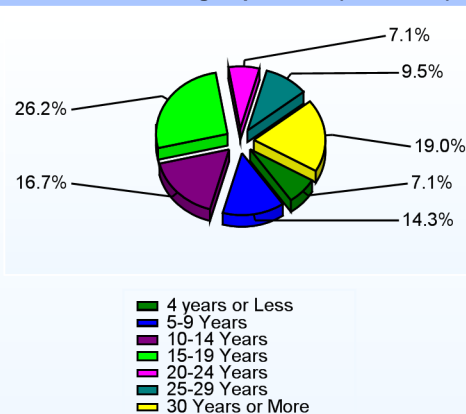
	<u>2013</u>
Students Per Teacher	16
Students Per Administrator	335
Students Per Instructional Staff	12
Students Per Pupil Support Staff	167
School Staff Per Administrator	37

Staff Qualifications

Percentage of Classes Taught by Highly Qualified Teachers (2012-2013)

	<u>Total Classes</u>	<u>% Highly Qualified</u>	<u>% Not Highly Qualified</u>
Reading/ Language Arts	44	97.7%	2.3%
Arts	54	100.0%	0.0%
Foreign Languages	18	100.0%	0.0%
Science	30	100.0%	0.0%
Mathematics	34	100.0%	0.0%
Geography	10	100.0%	0.0%
Social Studies	13	100.0%	0.0%
History	9	100.0%	0.0%

Years of Teaching Experience (2012-2013)



Education Level

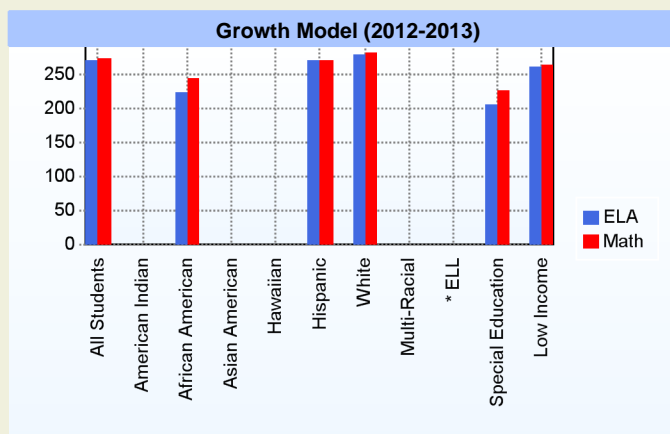
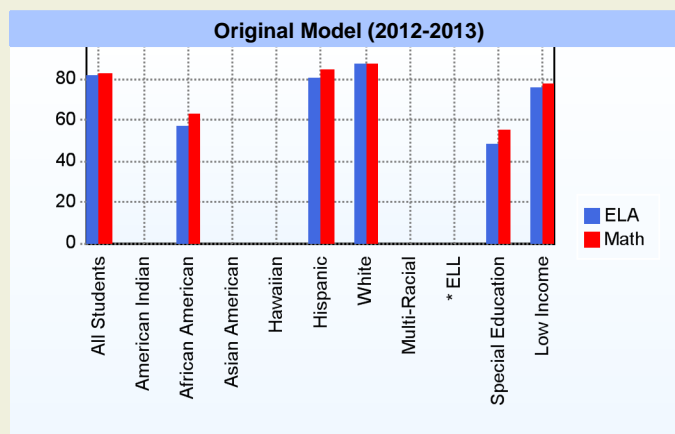
	<u>2013</u>
Percent with Masters Degree and Above	62.7%
Percent Holding National Board for Professional Teaching Standards	6.8%

Curriculum Highlights

Selbyville Middle School offers a variety of programs and extra-curricular activities for students. These programs include a before school program, Read180/Pre-Teach Math, and a DSTP prep and also a vocabulary building program daily. Students have opportunities to excel in Advance Challenge Program for talented 8th grade students to receive additional instruction in math and English at Del Tech. Sixth grade students have the EXCEL program and honors placements are available to all students meeting district criteria.

AYP

Only groups with greater than 40 students are reported



* English Language Learner

* English Language Learner

% Test Participation (2012-2013)

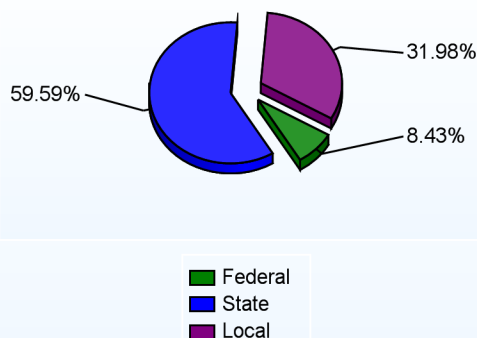
	<u>ELA</u>	<u>Math</u>	<u>ELA Goal</u>	<u>Math Goal</u>
All Students	100	100	95	95
American Indian	*	*	95	95
African American	99	100	95	95
Asian American	*	*	95	95
Hawaiian	*	*	95	95
Hispanic	100	100	95	95
White	100	100	95	95
Multi-Racial	*	*	95	95
English Language Learner	*	*	95	95
Special Education	99	100	95	95
Low Income	100	100	95	95



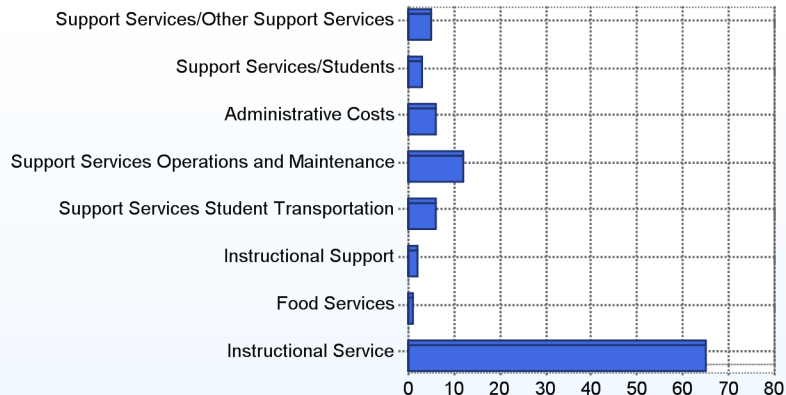
School Finances

District Expenditure per Pupil (2011-2012): \$11,736

District Sources of Revenue (2011-2012)



Percent District Allocation of Current Expenses by Category (2011-2012)



School Salary Allocation

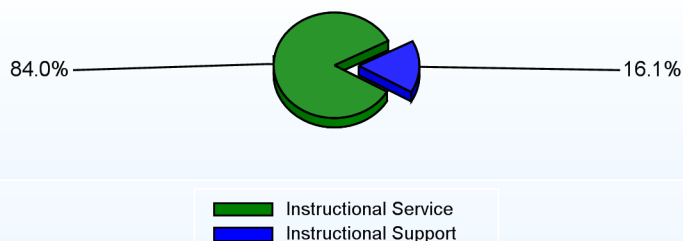
Instructional Service

	2013
Teachers	65.6%
Instructional Support	12.4%
Pupil Support	6.0%
Total	84.0%

Instructional Support

	2013
Administration	5.1%
Secretaries	2.9%
Food Services	3.0%
Maintenance	5.1%
Total	16.1%

Instructional vs. Support (2012-2013)



For further information and detailed reports, visit

<http://profiles.doe.k12.de.us>

or contact your local school district office.

Glossary: <http://profiles.doe.k12.de.us/glossary.aspx>



Delaware Department of Education

John G. Townsend Building
401 Federal Street, Suite #2
Dover, Delaware, 19901 - 3639
Phone: (302) 735-4000

District: Indian River School District

Telephone: (302) 856-1900

Address: 301 West Market Street, Georgetown DE 19947

Web: www.gm.irsd.k12.de.us

Principal: Michael Williams

AYP: Met

School Demographics

Fall Enrollment		
	2012	2013
Grade 6	145	192
Grade 7	169	145
Grade 8	173	162
Total	487	499

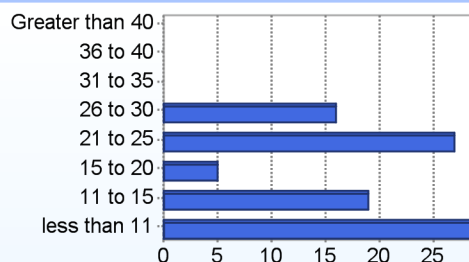
Recently Arrived ELL Students	
	2013
Number of Students Not Tested on ELA Assessment	7

Enrollment by Race/Ethnicity		
	2012	2013
African American	16.0%	15.8%
American Indian	0.6%	1.0%
Asian	1.4%	1.8%
Hispanic/Latino	41.5%	43.9%
White	35.3%	31.5%
Multi-Racial	5.1%	6.0%

School Promotion by Grade	
	2012
Grade 6	100.0%
Grade 7	98.8%
Grade 8	99.4%

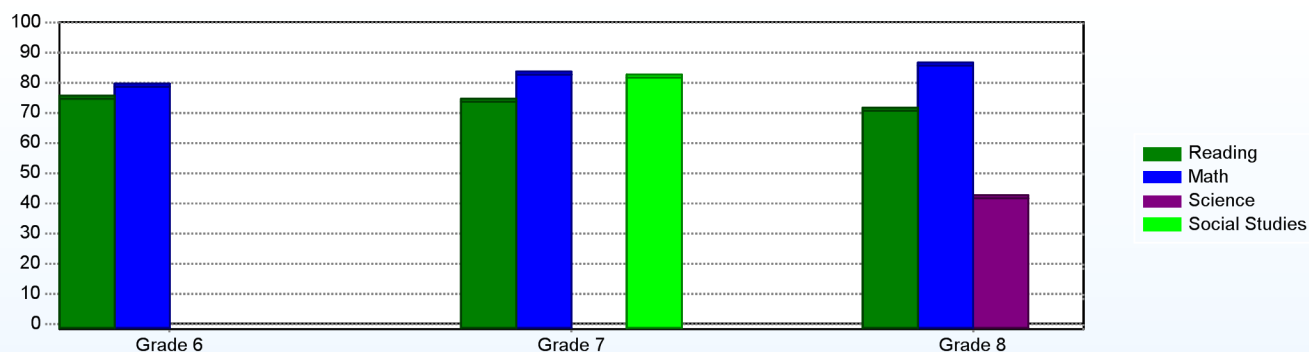
Other Student Characteristics		
	2012	2013
English Language Learner	6.2%	6.4%
Low Income	72.3%	74.3%
Special Education	15.2%	14.6%
Enrolled for Full Year	100.0%	N/A

Class Size (Percentage by Range) (2012-2013)



Student Achievement

Percentage of Students Meeting State Standards (2012-2013)



Exemplary Programs

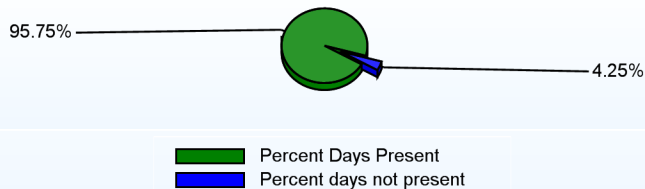
Georgetown Middle School offers its students a variety of academic and extracurricular activities during and after school. Students may participate in after school sports, including boys and girls soccer, field hockey, football, cheerleading, girls and boys basketball, baseball and softball. Students also have the opportunity to join programs such as the Student Council, National Junior Honor Society, math league, chorus, band, Business Professionals of America, Talent Search, and the Broadway Knights Theater Academy.

Student - School Safety and Discipline

Number of Reported Offenses (2012-2013)

	<u>School</u>	<u>District</u>	<u>State</u>
School Crimes (Title 14, Delaware Code, §4112)	1	38	579
Department of Education (DOE) Offenses	26	286	10732

Percent Days Present (2012-2013)



Suspensions and Expulsions

	<u>2013</u>
Number of Suspensions	85
Number of Expulsions	2
Count of Students Suspended/Expelled	61
September 30 Enrollment	499
Percent of Students Suspended/Expelled	12%
District Percentage	12%
State Percentage	14%

Our Staff

Number of Instructional Staff

	<u>2013</u>
Teachers	38
Instructional Support	7
Pupil Support	5
Total	50

Staff by Race/Ethnicity

	<u>2013</u>
American Indian	0.0%
African American	2.0%
Asian American	0.0%
Hispanic	2.0%
White	96.0%

Staffing Ratios

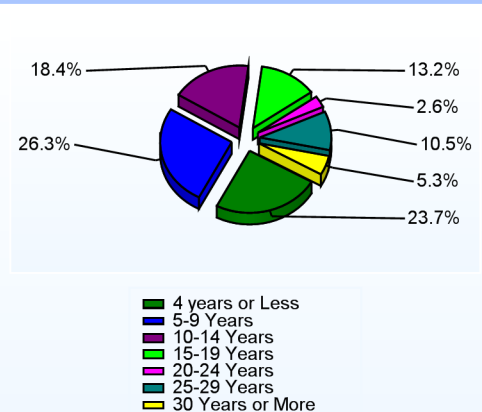
	<u>2013</u>
Students Per Teacher	13
Students Per Administrator	250
Students Per Instructional Staff	11
Students Per Pupil Support Staff	100
School Staff Per Administrator	35

Staff Qualifications

Percentage of Classes Taught by Highly Qualified Teachers (2012-2013)

	<u>Total Classes</u>	<u>% Highly Qualified</u>	<u>% Not Highly Qualified</u>
English	6	100.0%	0.0%
Reading/ Language Arts	26	100.0%	0.0%
Arts	26	100.0%	0.0%
Foreign Languages	16	100.0%	0.0%
Science	23	100.0%	0.0%
Mathematics	40	100.0%	0.0%
Social Studies	22	100.0%	0.0%
Elementary General	6	100.0%	0.0%

Years of Teaching Experience (2012-2013)



Education Level

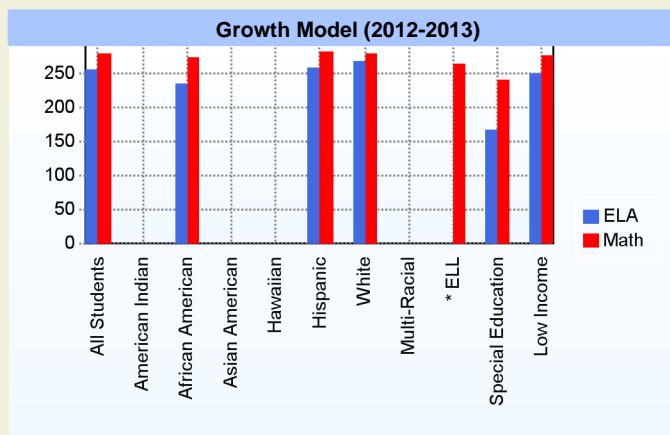
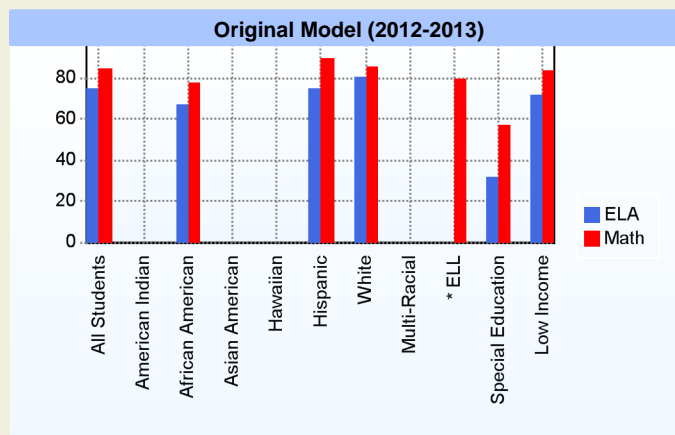
	<u>2013</u>
Percent with Masters Degree and Above	56.0%
Percent Holding National Board for Professional Teaching Standards	0.0%

Curriculum Highlights

GMS has superior academics. Students may enroll in honors math and ELA classes, as well as take a variety of exploratory classes such as art, music, computer, keyboarding, physical education, health, and Spanish. In addition, students may receive extra academic support by being enrolled in exploring math, ELL, READ180, pre-teach math, and/or pre-teach ELA. Each morning all students participate in Enrichment, which allows students to spend 30 minutes getting additional academic DCAS support in math and/or reading, or students spend time in one of GMS's exploratory classes or extracurricular activities. GMS also offers AVID for seventh and eighth grade students. "AVID, Advancement Via Individual Determination, is an elementary through postsecondary college readiness system that is designed to increase school-wide learning and performance" (www.avid.org).

AYP

Only groups with greater than 40 students are reported



* English Language Learner

* English Language Learner

% Test Participation (2012-2013)

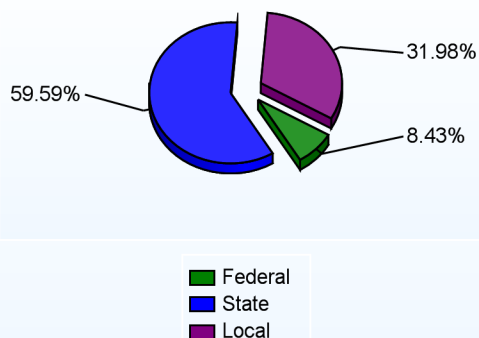
	<u>ELA</u>	<u>Math</u>	<u>ELA Goal</u>	<u>Math Goal</u>
All Students	100	100	95	95
American Indian	*	*	95	95
African American	100	100	95	95
Asian American	*	*	95	95
Hawaiian	*	*	95	95
Hispanic	100	100	95	95
White	100	100	95	95
Multi-Racial	*	*	95	95
English Language Learner	*	*	95	95
Special Education	100	100	95	95
Low Income	100	100	95	95



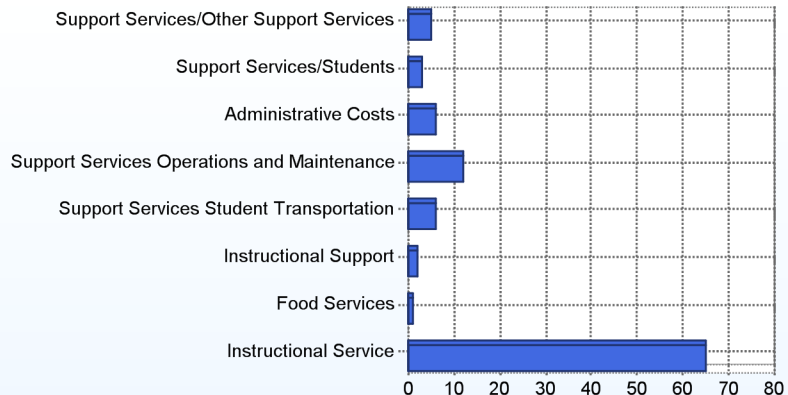
School Finances

District Expenditure per Pupil (2011-2012): \$11,736

District Sources of Revenue (2011-2012)



Percent District Allocation of Current Expenses by Category (2011-2012)



School Salary Allocation

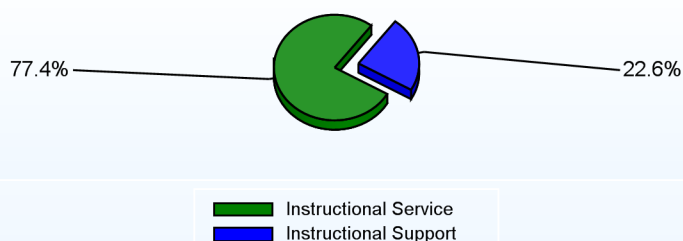
Instructional Service

	2013
Teachers	63.7%
Instructional Support	7.5%
Pupil Support	6.2%
Total	77.4%

Instructional Support

	2013
Administration	5.8%
Secretaries	4.0%
Food Services	3.4%
Maintenance	9.4%
Total	22.6%

Instructional vs. Support (2012-2013)



For further information and detailed reports, visit

<http://profiles.doe.k12.de.us>

or contact your local school district office.

Glossary: <http://profiles.doe.k12.de.us/glossary.aspx>



Delaware Department of Education

John G. Townsend Building
401 Federal Street, Suite #2
Dover, Delaware, 19901 - 3639
Phone: (302) 735-4000

District: Indian River School District
Address: 29772 Armory Road, Dagsboro DE 19945
Principal: Bennett Murray
AYP: Met

Telephone: (302) 732-1500
Web: www.ir.irsd.k12.de.us

School Demographics

Fall Enrollment		
	2012	2013
Grade 9	225	229
Grade 10	248	215
Grade 11	216	249
Grade 12	221	204
Total	910	897

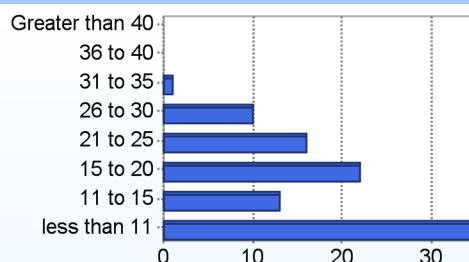
Enrollment by Race/Ethnicity		
	2012	2013
African American	14.2%	13.0%
Asian	1.3%	1.2%
Hispanic/Latino	10.0%	11.0%
White	74.4%	74.1%
Multi-Racial	0.1%	0.6%

Other Student Characteristics		
	2012	2013
English Language Learner	1.0%	1.3%
Low Income	46.6%	47.7%
Special Education	13.8%	13.7%
Enrolled for Full Year	100.0%	N/A

Recently Arrived ELL Students	
	2013
Number of Students Not Tested on ELA Assessment	2

School Promotion by Grade	
	2012
Grade 9	97.3%
Grade 10	100.0%
Grade 11	99.5%
Grade 12	99.1%

Class Size (Percentage by Range) (2012-2013)

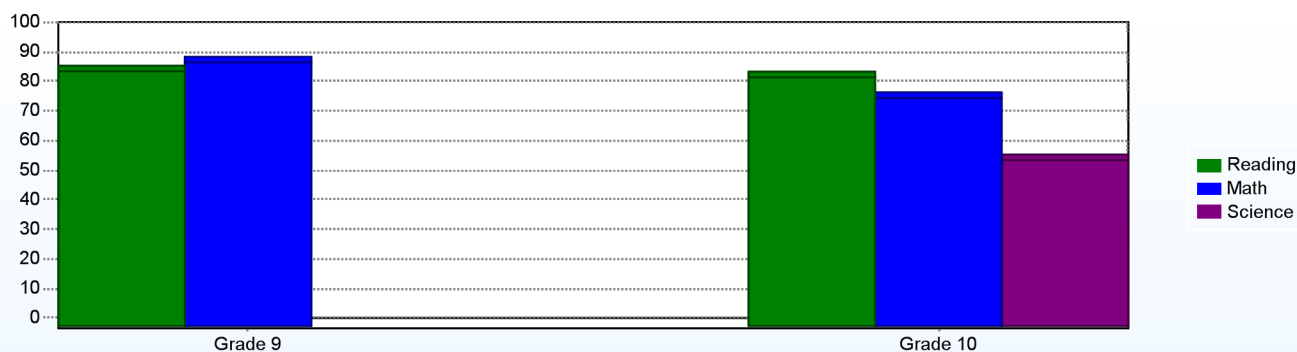


Student Achievement

Advanced Placement (AP) (2011-2012)	
	2012
Advanced Placement Courses	13
No. of Students Enrolled	150
No. of Exams Taken	145
Total No. of Exams Passed	77

Public School SAT Reasoning Test (Average Score) (2011-2012)				
	School	District	State	National
Math	456	430	447	514
Critical Reading	437	413	438	496
Writing	439	405	425	488
Total	1,332	1,248	1,310	1,498

Percentage of Students Meeting State Standards (2012-2013)



Exemplary Programs

Indian River High School offers numerous exemplary programs. The Career and Technical Program utilizes a "hands-on" approach to learning and promotes student's participation in national programs such as FFA, BPA, TSA, and HOSA. Indian River's CTE students have received numerous accolades in both state and national competitions. The school's CNA program is now entering its fourth year and is structured to have students earn a Certified Nursing Assistant certificate upon graduation.

Indian River's music program has over 190 students in vocal and instrumental classes. Students regularly earn All-State and All-County honors. Many of these students take the school's music pathway and remain in the program throughout high school and into post-graduate studies.

The school's Marine Corps JROTC program is now entering its 14th year at Indian River. About 10% of the student body is involved in JROTC training. The JROTC drill team participates in a number of parades and other comm

Student - School Safety and Discipline

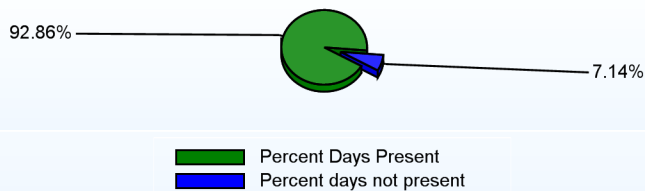
Number of Reported Offenses (2012-2013)

	<u>School</u>	<u>District</u>	<u>State</u>
School Crimes (Title 14, Delaware Code, §4112)	10	38	579
Department of Education (DOE) Offenses	46	286	10732
All School Safety Policy in Place	Yes		

Suspensions and Expulsions

	<u>2013</u>
Number of Suspensions	362
Number of Expulsions	5
Count of Students Suspended/Expelled	172
September 30 Enrollment	897
Percent of Students Suspended/Expelled	19%
District Percentage	12%
State Percentage	14%

Percent Days Present (2012-2013)



Our Staff

Number of Instructional Staff

	<u>2013</u>
Teachers	60
Librarians	1
Instructional Support	4
Pupil Support	6
Total	71

Staff by Race/Ethnicity

	<u>2013</u>
American Indian	0.0%
African American	1.4%
Asian American	0.0%
Hispanic	0.0%
White	98.6%

Staffing Ratios

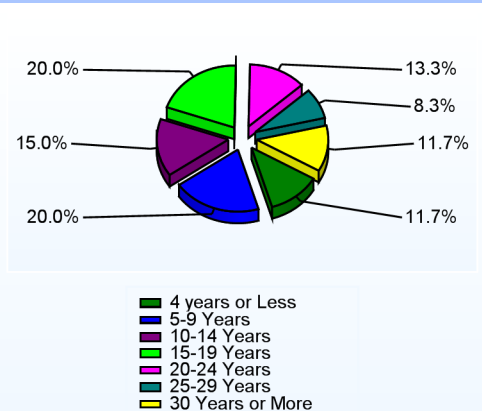
	<u>2013</u>
Students Per Teacher	15
Students Per Administrator	449
Students Per Instructional Staff	14
Students Per Pupil Support Staff	150
School Staff Per Administrator	47

Staff Qualifications

Percentage of Classes Taught by Highly Qualified Teachers (2012-2013)

	<u>Total Classes</u>	<u>% Highly Qualified</u>	<u>% Not Highly Qualified</u>
English	62	100.0%	0.0%
Reading/ Language Arts	13	100.0%	0.0%
Arts	22	100.0%	0.0%
Foreign Languages	32	100.0%	0.0%
Science	53	100.0%	0.0%
Mathematics	61	96.7%	3.3%
Civics & Government	17	100.0%	0.0%
Social Studies	14	100.0%	0.0%
History	23	100.0%	0.0%

Years of Teaching Experience (2012-2013)



Education Level

	<u>2013</u>
Percent with Masters Degree and Above	71.8%
Percent Holding National Board for Professional Teaching Standards	1.6%

Curriculum Highlights

Indian River High School has completed the Vision 2015 Focus on Results Initiative. The school's Instructional Leadership Team has focused on enhancing curriculum to increase the rigor and relevance of its educational programs. Each content area department maintains publicly accessible data to share with stakeholders. These include schoolwide goals, DCAS scores, and other assessment data in order to increase communication and transparency.

Since NCLB assessments were introduced, Indian River High School has consistently scored above average in all levels of testing. Statistics show that in the areas of English, Math, Science, and Social Studies Indian River has consistently ranked among the top traditional high schools in the state.

Over the past three years, IRHS has added three new Advanced Placement courses to its curriculum. In addition to the four existing AP courses offered, students may now enroll in AP Statistics, Environmental Science, and Psychology.

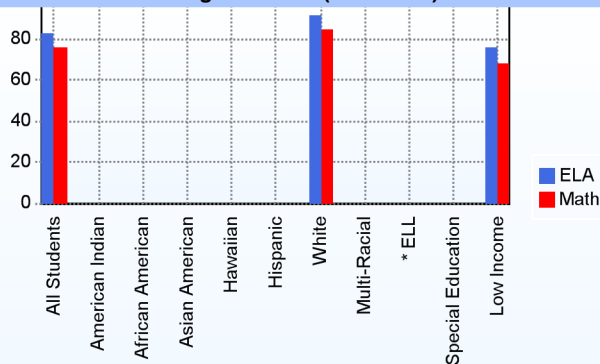
Graduation Rate - ESEA 4 Year Adjusted

	2011	2012
	<u>ESEA</u>	<u>ESEA</u>
All Students	87.0%	88.1%
African American	71.4%	82.2%
Asian American	100.0%	100.0%
Hispanic	74.1%	86.7%
White	90.3%	89.4%
English Language Learner	75.0%	100.0%
Special Education	71.7%	78.8%
Low Income	77.4%	82.9%

AYP

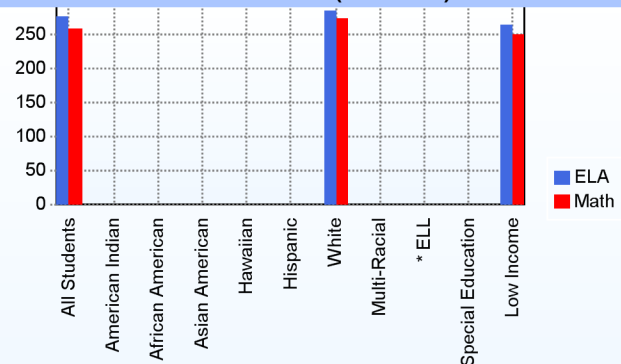
Only groups with greater than 40 students are reported

Original Model (2012-2013)



* English Language Learner

Growth Model (2012-2013)



* English Language Learner

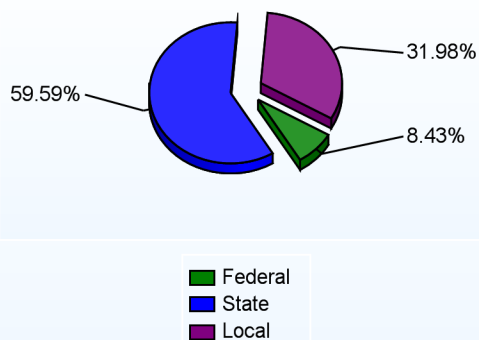
% Test Participation (2012-2013)

	<u>ELA</u>	<u>Math</u>	<u>ELA Goal</u>	<u>Math Goal</u>
All Students	100	100	95	95
American Indian	*	*	95	95
African American	100	100	95	95
Asian American	*	*	95	95
Hawaiian	*	*	95	95
Hispanic	*	*	95	95
White	100	100	95	95
Multi-Racial	*	*	95	95
English Language Learner	*	*	95	95
Special Education	*	*	95	95
Low Income	100	100	95	95

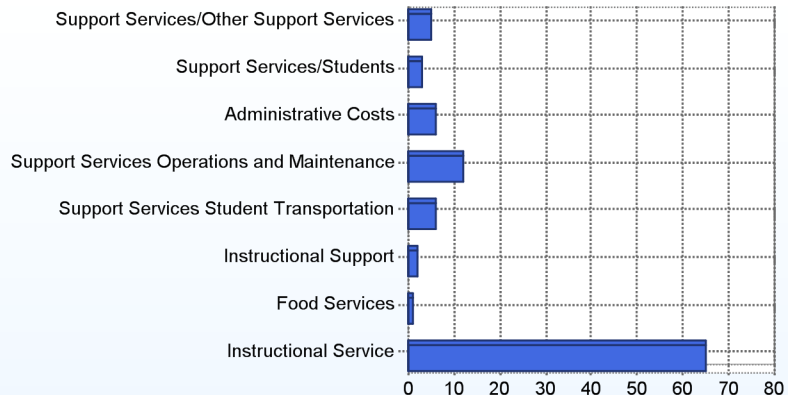
School Finances

District Expenditure per Pupil (2011-2012): \$11,736

District Sources of Revenue (2011-2012)



Percent District Allocation of Current Expenses by Category (2011-2012)



School Salary Allocation

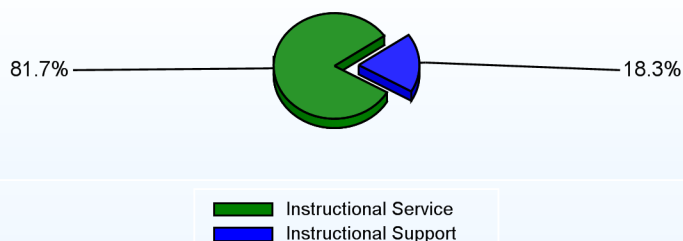
Instructional Service

	2013
Teachers	70.8%
Librarians	1.4%
Instructional Support	2.9%
Pupil Support	6.6%
Total	81.7%

Instructional Support

	2013
Administration	4.0%
Secretaries	2.7%
Food Services	2.6%
Maintenance	6.6%
Not Classified	2.4%
Total	18.3%

Instructional vs. Support (2012-2013)



For further information and detailed reports, visit

<http://profiles.doe.k12.de.us>

or contact your local school district office.

Glossary: <http://profiles.doe.k12.de.us/glossary.aspx>



Delaware Department of Education

John G. Townsend Building
401 Federal Street, Suite #2
Dover, Delaware, 19901 - 3639
Phone: (302) 735-4000

District: Indian River School District
Address: 26026 Patriots Way, Georgetown DE 19947
Principal: Jack Owens
AYP: Met

Telephone: (302) 934-3166
Web: www.sc.irsd.k12.de.us

School Demographics

Fall Enrollment		
	2012	2013
Grade 9	297	331
Grade 10	302	304
Grade 11	337	302
Grade 12	279	312
Total	1215	1249

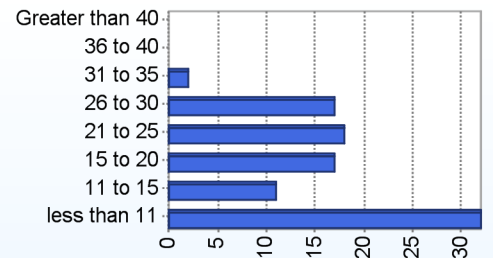
Enrollment by Race/Ethnicity		
	2012	2013
African American	20.4%	17.2%
American Indian	0.6%	0.7%
Asian	0.7%	0.8%
Hispanic/Latino	20.1%	23.5%
White	56.6%	54.8%
Multi-Racial	1.6%	3.0%

Other Student Characteristics		
	2012	2013
English Language Learner	2.8%	4.2%
Low Income	66.4%	70.5%
Special Education	13.7%	14.4%
Enrolled for Full Year	100.0%	N/A

Recently Arrived ELL Students	
	2013
Number of Students Not Tested on ELA Assessment	24

School Promotion by Grade	
	2012
Grade 9	97.6%
Grade 10	99.7%
Grade 11	97.9%
Grade 12	98.6%

Class Size (Percentage by Range) (2012-2013)

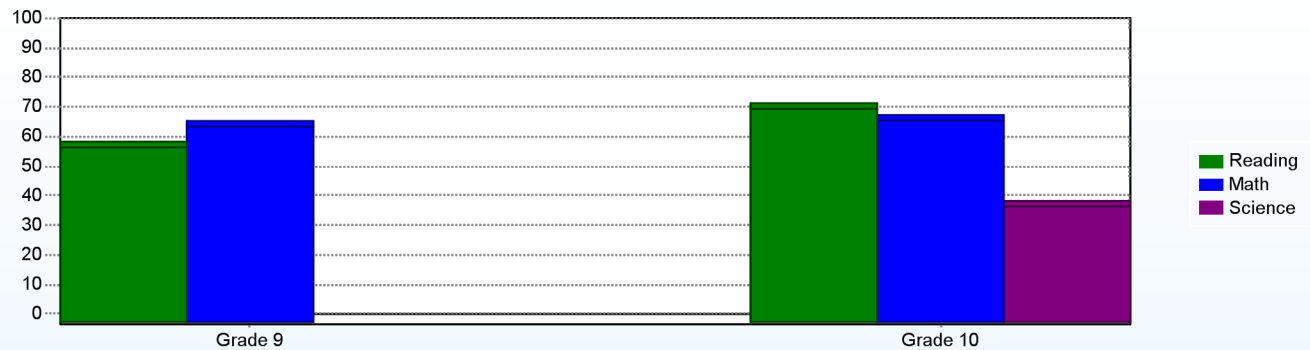


Student Achievement

Advanced Placement (AP) (2011-2012)	
	2012
Advanced Placement Courses	7
No. of Students Enrolled	97
No. of Exams Taken	305
Total No. of Exams Passed	94

Public School SAT Reasoning Test (Average Score) (2011-2012)				
	School	District	State	National
Math	412	430	447	514
Critical Reading	397	413	438	496
Writing	381	405	425	488
Total	1,190	1,248	1,310	1,498

Percentage of Students Meeting State Standards (2012-2013)



Exemplary Programs

Sussex Central High School, a diverse and dynamic community, strives to prepare students to be life-long learners and responsible global citizens. SCHS has a 9th grade Academy and a 10th grade Academy that provide small class sizes and focus on students' successful transitions to the rigors of high school. Honors and AP classes are offered in all of the core areas as well as in elective areas in order to allow students to challenge themselves in their area of interest and strength. SCHS has many opportunities for students both academically and extra-curricular. These programs include our outstanding athletics, or participating in the Centre for the Visual and Performing Arts and Take II Drama. SCHS also offers SGA, FFA, BPA, NHS, Spanish NHS, Technical NHS, Band, Chorus, JROTC, Science Olympiad, Math League, Spanish Club, Yearbook, and Brother/Sister Knights.

Student - School Safety and Discipline

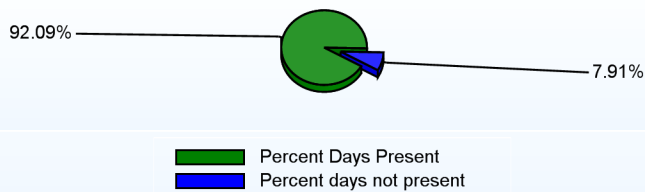
Number of Reported Offenses (2012-2013)

	<u>School</u>	<u>District</u>	<u>State</u>
School Crimes (Title 14, Delaware Code, §4112)	11	38	579
Department of Education (DOE) Offenses	107	286	10732
All School Safety Policy in Place	Yes		

Suspensions and Expulsions

	<u>2013</u>
Number of Suspensions	823
Number of Expulsions	17
Count of Students Suspended/Expelled	346
September 30 Enrollment	1249
Percent of Students Suspended/Expelled	28%
District Percentage	12%
State Percentage	14%

Percent Days Present (2012-2013)



Our Staff

Number of Instructional Staff

	<u>2013</u>
Teachers	87
Instructional Support	10
Pupil Support	8
Total	105

Staff by Race/Ethnicity

	<u>2013</u>
American Indian	0.0%
African American	4.8%
Asian American	0.0%
Hispanic	3.8%
White	91.4%

Staffing Ratios

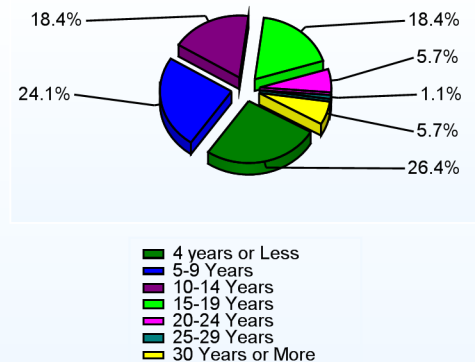
	<u>2013</u>
Students Per Teacher	14
Students Per Administrator	250
Students Per Instructional Staff	13
Students Per Pupil Support Staff	156
School Staff Per Administrator	26

Staff Qualifications

Percentage of Classes Taught by Highly Qualified Teachers (2012-2013)

	<u>Total Classes</u>	<u>% Highly Qualified</u>	<u>% Not Highly Qualified</u>
English	79	100.0%	0.0%
Arts	34	100.0%	0.0%
Foreign Languages	43	86.0%	14.0%
Science	65	93.8%	6.2%
Mathematics	84	86.9%	13.1%
Civics & Government	17	100.0%	0.0%
Social Studies	1	100.0%	0.0%
History	40	100.0%	0.0%

Years of Teaching Experience (2012-2013)



Education Level

	<u>2013</u>
Percent with Masters Degree and Above	46.7%
Percent Holding National Board for Professional Teaching Standards	4.3%

Curriculum Highlights

As a comprehensive high school, Sussex Central High School focuses on preparing all students to meet college entrance requirements. Academic courses are offered as a minimum of College Prep while advanced learners take Honors courses. Beginning in the 10th grade, college bound students can take advantage of the numerous AP courses offered at Sussex Central High School. AP courses offered are Biology, Environmental Science, Calculus AB, Probability & Statistics, US History, European History, Psychology, English Language, and English Literature, Spanish Language, Spanish Literature, Art History, Studio Art: 2-D, and Studio Art: 3-D. In addition, SCHS is an approved International Baccalaureate World School. Students also have the opportunity to take advantage of the many Pathways of Study offered at SCHS. These include: Spanish, Medical, Biotechnology, Microsoft Engineering, Design Media, Broadcasting, Accounting, Marketing, Dance, Instrumental Music, Voice, Theater, Art, Animal Sc

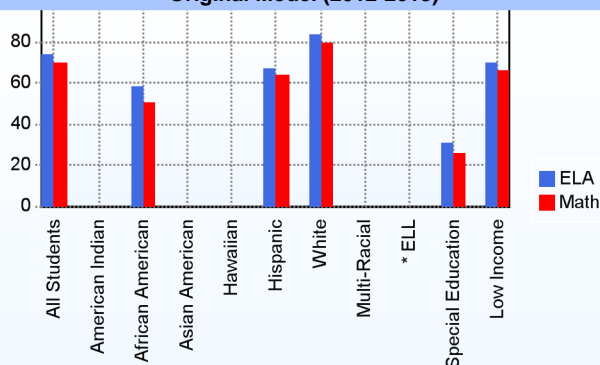
Graduation Rate - ESEA 4 Year Adjusted

	2011	2012
	<u>ESEA</u>	<u>ESEA</u>
All Students	83.3%	87.6%
American Indian	100.0%	83.3%
African American	84.7%	87.2%
Asian American	100.0%	50.0%
Hispanic	76.4%	95.3%
White	83.6%	86.0%
Multi-Racial	100.0%	
English Language Learner	62.5%	100.0%
Special Education	73.0%	87.3%
Low Income	82.2%	87.4%

AYP

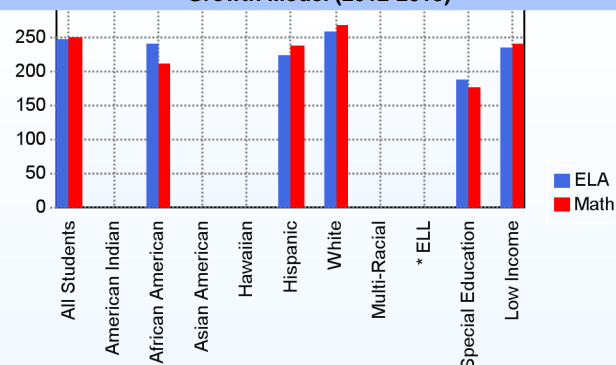
Only groups with greater than 40 students are reported

Original Model (2012-2013)



* English Language Learner

Growth Model (2012-2013)



* English Language Learner

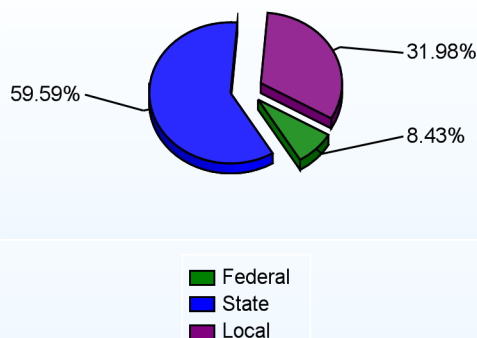
% Test Participation (2012-2013)

	<u>ELA</u>	<u>Math</u>	<u>ELA Goal</u>	<u>Math Goal</u>
All Students	100	99	95	95
American Indian	*	*	95	95
African American	100	100	95	95
Asian American	*	*	95	95
Hawaiian	*	*	95	95
Hispanic	100	100	95	95
White	99	99	95	95
Multi-Racial	*	*	95	95
English Language Learner	*	*	95	95
Special Education	97	95	95	95
Low Income	100	99	95	95

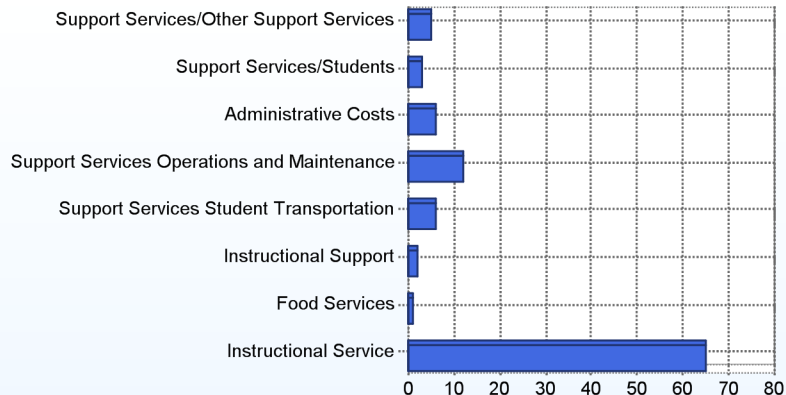
School Finances

District Expenditure per Pupil (2011-2012): \$11,736

District Sources of Revenue (2011-2012)



Percent District Allocation of Current Expenses by Category (2011-2012)



School Salary Allocation

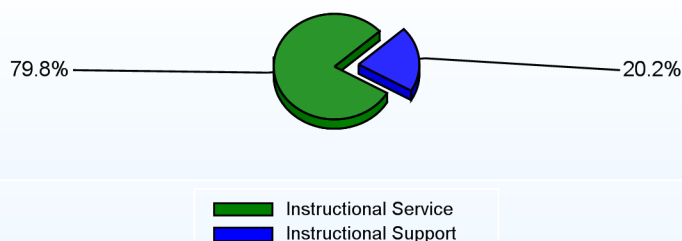
Instructional Service

	2013
Teachers	68.9%
Instructional Support	4.0%
Pupil Support	6.9%
Total	79.8%

Instructional Support

	2013
Administration	7.0%
Secretaries	3.4%
Food Services	2.3%
Maintenance	5.9%
Not Classified	1.6%
Total	20.2%

Instructional vs. Support (2012-2013)



For further information and detailed reports, visit

<http://profiles.doe.k12.de.us>

or contact your local school district office.

Glossary: <http://profiles.doe.k12.de.us/glossary.aspx>



Delaware Department of Education

John G. Townsend Building
401 Federal Street, Suite #2
Dover, Delaware, 19901 - 3639
Phone: (302) 735-4000

District: Indian River School District
Address: 27 Hosier Street, Selbyville DE 19975
Principal: Neil Beahan
AYP: Met

Telephone: (302) 436-1066
Web: www.sa.irsd.k12.de.us

School Demographics

Fall Enrollment		
	2012	2013
Grade 1	44	44
Grade 2	46	46
Grade 3	46	48
Grade 4	51	53
Grade 5	56	54
Grade 6	53	55
Grade 7	55	55
Grade 8	55	52
Total	406	407

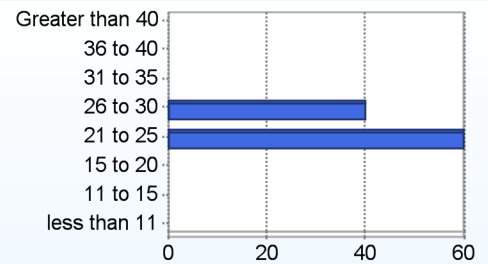
Enrollment by Race/Ethnicity		
	2012	2013
African American	5.4%	4.9%
American Indian	0.7%	
Asian	1.5%	2.0%
Hawaiian	0.2%	0.2%
Hispanic/Latino	5.7%	5.2%
White	86.0%	86.2%
Multi-Racial	0.5%	1.5%

Other Student Characteristics		
	2012	2013
English Language Learner	0.7%	0.2%
Low Income	26.6%	26.3%
Special Education	8.1%	7.9%
Enrolled for Full Year	100.0%	N/A

School Promotion by Grade	
	2012
Grade 1	97.7%
Grade 2	97.8%
Grade 3	100.0%
Grade 4	100.0%
Grade 5	100.0%
Grade 6	100.0%
Grade 7	100.0%
Grade 8	100.0%

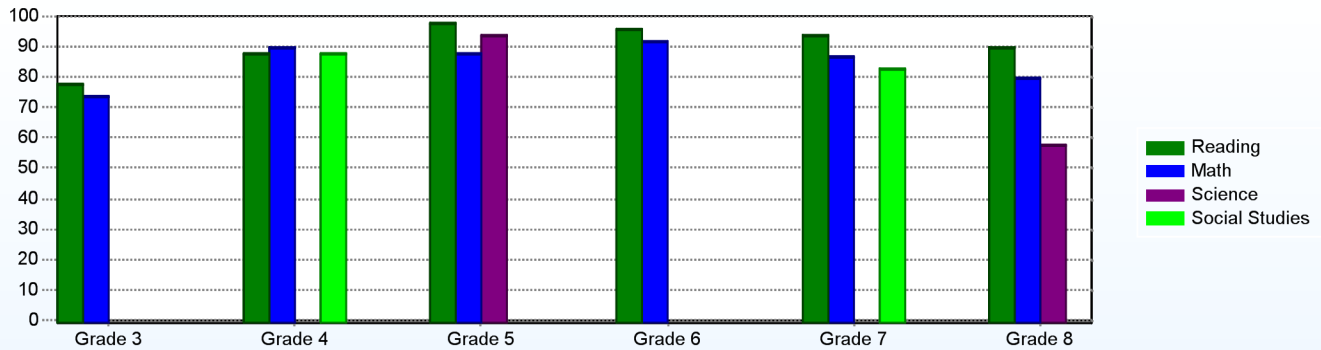
Recently Arrived ELL Students	
	2013
Number of Students Not Tested on ELA Assessment	0

Class Size (Percentage by Range) (2012-2013)



Student Achievement

Percentage of Students Meeting State Standards (2012-2013)



Exemplary Programs

We have several Arts offerings for students in all grades at the Southern Delaware School of the Arts. Our Visual Art classes include drawing, painting, ceramics, and sculpture. Emphasis in these classes are on critical thinking and creative response. The Dance program teaches the art of dance through creating, performing, and viewing other performers. Students learn a variety of styles including ballet, modern, jazz, and tap. In Drama, students study character development, story enactment, improvisation, production, direction, and stage technology. Creative problem-solving and group interaction are also emphasized. The Vocal and Instrumental programs teach basic music concepts and allow for inclusion in band, chorus, show choir, and rock band ensembles. Students experience a more concentrated emphasis on performance in grades 6-8 as they transition to major and minor art classes.

Student - School Safety and Discipline

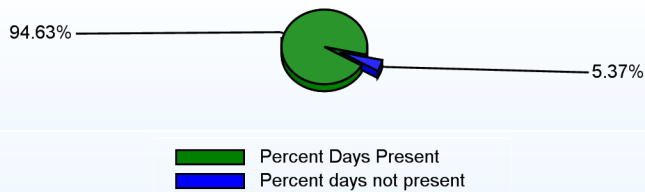
Number of Reported Offenses (2012-2013)

	<u>School</u>	<u>District</u>	<u>State</u>
School Crimes (Title 14, Delaware Code, §4112)		38	579
Department of Education (DOE) Offenses	1	286	10732
All School Safety Policy in Place	Yes		

Suspensions and Expulsions

	<u>2013</u>
Number of Suspensions	4
Number of Expulsions	0
Count of Students Suspended/Expelled	2
September 30 Enrollment	407
Percent of Students Suspended/Expelled	0%
District Percentage	12%
State Percentage	14%

Percent Days Present (2012-2013)



Our Staff

Number of Instructional Staff

	<u>2013</u>
Teachers	25
Pupil Support	2
Total	27

Staff by Race/Ethnicity

	<u>2013</u>
American Indian	0.0%
African American	0.0%
Asian American	0.0%
Hispanic	0.0%
White	100.0%

Staffing Ratios

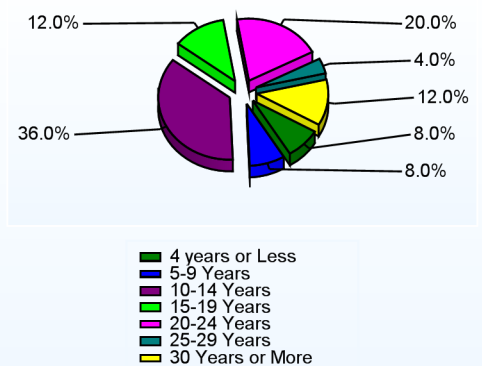
	<u>2013</u>
Students Per Teacher	16
Students Per Administrator	204
Students Per Instructional Staff	16
Students Per Pupil Support Staff	204
School Staff Per Administrator	19

Staff Qualifications

Percentage of Classes Taught by Highly Qualified Teachers (2012-2013)

	<u>Total Classes</u>	<u>% Highly Qualified</u>	<u>% Not Highly Qualified</u>
English	1	100.0%	0.0%
Reading/ Language Arts	7	100.0%	0.0%
Arts	22	100.0%	0.0%
Science	4	100.0%	0.0%
Mathematics	5	100.0%	0.0%
Social Studies	6	33.3%	66.7%
Elementary General	14	100.0%	0.0%

Years of Teaching Experience (2012-2013)



Education Level

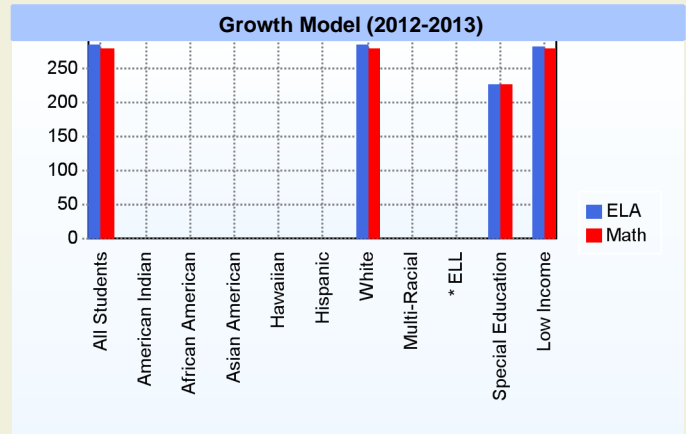
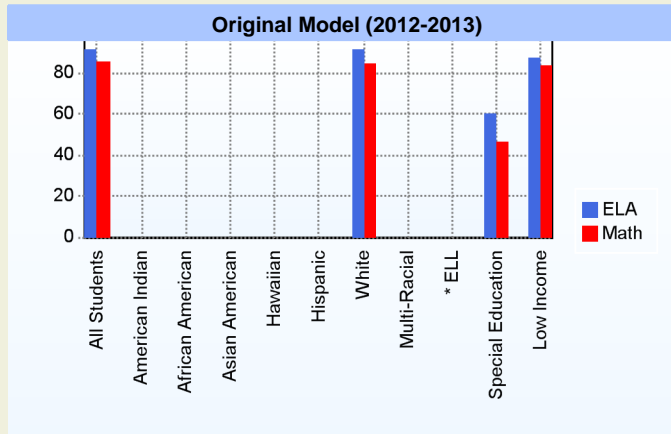
	<u>2013</u>
Percent with Masters Degree and Above	70.4%
Percent Holding National Board for Professional Teaching Standards	4.0%

Curriculum Highlights

SDSA's Mission is to "Promote student achievement by learning through the Arts." Students learn in their core academic classes through traditional approaches and an Arts component for each academic unit in ELA, Math, Science and Social Studies. This Arts Integration approach is used to address multiple learning modalities while using brain researched strategies. Through this approach, students are offered opportunities to extend and refine their thinking while also being offered individual differentiation. SDSA adheres to the Indian River School District's curriculum in all academic areas. This curriculum is aligned with Common Core State Standards and grade level expectations. All teachers and administration monitor and analyze student data through Professional Learning Communities. This data is used to drive instruction within the heterogeneous classrooms.

AYP

Only groups with greater than 40 students are reported



* English Language Learner

* English Language Learner

% Test Participation (2012-2013)

	<u>ELA</u>	<u>Math</u>	<u>ELA Goal</u>	<u>Math Goal</u>
All Students	100	100	95	95
American Indian	*	*	95	95
African American	*	*	95	95
Asian American	*	*	95	95
Hawaiian	*	*	95	95
Hispanic	*	*	95	95
White	100	100	95	95
Multi-Racial	*	*	95	95
English Language Learner	*	*	95	95
Special Education	100	100	95	95
Low Income	100	100	95	95



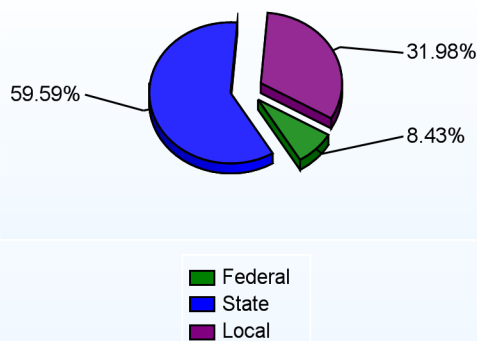
Other

SDSA provides a unique learning opportunity for students by integrating the Arts to develop higher order thinking, creativity and problem-solving skills and to connect to real-world experiences. This grade 1-8 district magnet school accentuates both academics and artistic excellence and is the only school of its kind in Sussex County. The uniform code, positive school culture, and the desire to offer all students success through differentiation have all contributed to our success. Parental involvement has always been an integral part of the SDSA family. We encourage parent participation in our very-active PTO, which helps to offset costs involved with updating technology, paying for field trips and programs, and classroom supplies.

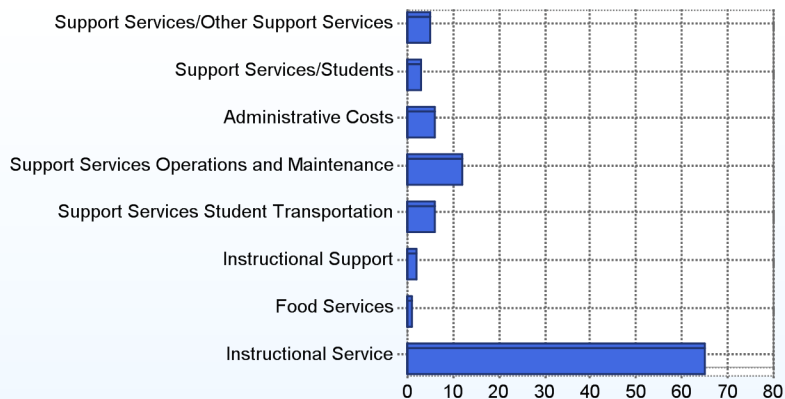
School Finances

District Expenditure per Pupil (2011-2012): \$11,736

District Sources of Revenue (2011-2012)



Percent District Allocation of Current Expenses by Category (2011-2012)



School Salary Allocation

Instructional Service

2013

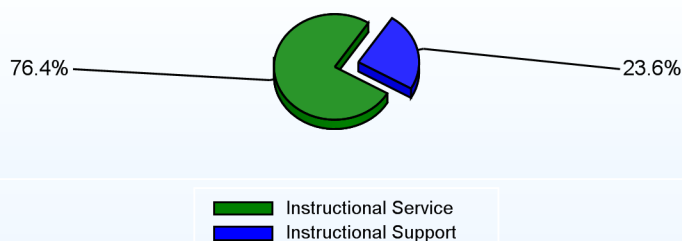
Teachers	70.8%
Pupil Support	5.6%
Total	76.4%

Instructional Support

2013

Administration	9.3%
Secretaries	3.2%
Food Services	3.9%
Maintenance	7.2%
Total	23.6%

Instructional vs. Support (2012-2013)



For further information and detailed reports, visit

<http://profiles.doe.k12.de.us>

or contact your local school district office.

Glossary: <http://profiles.doe.k12.de.us/glossary.aspx>



Delaware Department of Education

John G. Townsend Building
401 Federal Street, Suite #2
Dover, Delaware, 19901 - 3639
Phone: (302) 735-4000

District: Indian River School District
Address: 20346 Ennis Road, Georgetown DE 19947
Principal: Herman Riffin
AYP: Met

Telephone: (302) 856-1930
Web: www.he.irsd.k12.de.us

School Demographics

Fall Enrollment		
	2012	2013
Pre-Kindergarten	9	13
Kindergarten	5	4
Grade 1	7	3
Grade 2	6	7
Grade 3	8	6
Grade 4	7	9
Grade 5	7	7
Grade 6	3	6
Grade 7	4	5
Grade 8	6	4
Grade 9	14	6
Grade 10	5	13
Grade 11	7	6
Grade 12	32	33
Total	120	122

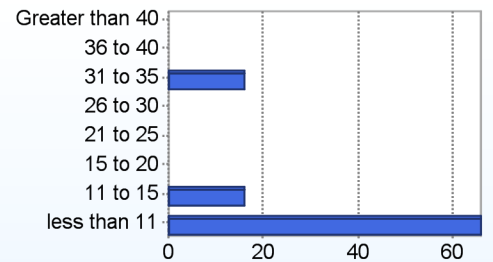
Recently Arrived ELL Students	
	2013
Number of Students Not Tested on ELA Assessment	0

Enrollment by Race/Ethnicity		
	2012	2013
African American	19.2%	17.2%
American Indian	3.3%	2.5%
Asian	0.8%	
Hispanic/Latino	22.5%	27.0%
White	48.3%	48.4%
Multi-Racial	5.8%	4.9%

School Promotion by Grade	
	2012
Pre-Kindergarten	33.3%
Kindergarten	100.0%
Grade 1	100.0%
Grade 2	100.0%
Grade 3	100.0%
Grade 4	100.0%
Grade 5	100.0%
Grade 6	100.0%
Grade 7	100.0%
Grade 8	100.0%
Grade 9	100.0%
Grade 10	100.0%
Grade 11	100.0%
Grade 12	34.4%

Other Student Characteristics		
	2012	2013
English Language Learner	4.5%	5.5%
Low Income	66.7%	71.6%
Special Education	100.0%	100.0%
Enrolled for Full Year	100.0%	N/A

Class Size (Percentage by Range) (2012-2013)



Exemplary Programs

Howard T Ennis has a reverse preschool inclusion program. This program consists of typical students being role models for our special needs population. Our elementary and middle school programs have a small teacher to student ratio that differentiates instruction to accommodate the needs of our diverse population. The PACT program consists of 2 major components: functional academics and pre-vocational opportunities. Students receive functional academic instruction in language arts, social studies, science, math, and vocational training. The PACT program was recognized as a 2010-2011 Super Stars In Education. The STEP program is a student-centered transition program designed to help our students ages 18 - 21 make a more successful and seamless transition from school to the adulthood.

Student - School Safety and Discipline

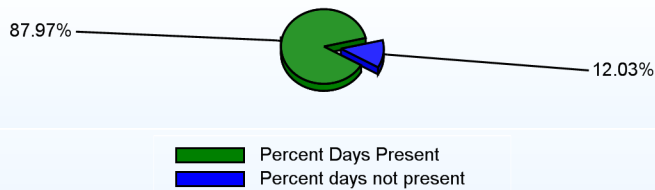
Number of Reported Offenses (2012-2013)

	<u>School</u>	<u>District</u>	<u>State</u>
School Crimes (Title 14, Delaware Code, §4112)		38	579
Department of Education (DOE) Offenses		286	10732
All School Safety Policy in Place	Yes		

Suspensions and Expulsions

	<u>2013</u>
September 30 Enrollment	122
District Percentage	12%
State Percentage	14%

Percent Days Present (2012-2013)



Our Staff

Number of Instructional Staff

	<u>2013</u>
Teachers	23
Instructional Support	38
Pupil Support	13
Total	74

Staff by Race/Ethnicity

	<u>2013</u>
American Indian	0.0%
African American	5.4%
Asian American	0.0%
Hispanic	2.7%
White	91.9%

Staffing Ratios

	<u>2013</u>
Students Per Teacher	5
Students Per Administrator	61
Students Per Instructional Staff	2
Students Per Pupil Support Staff	9
School Staff Per Administrator	41

Staff Qualifications

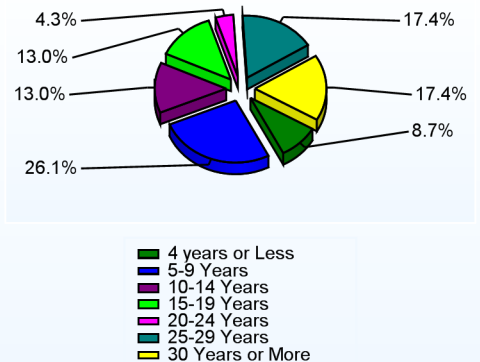
Percentage of Classes Taught by Highly Qualified Teachers (2012-2013)

	<u>Total Classes</u>	<u>% Highly Qualified</u>	<u>% Not Highly Qualified</u>
Elementary General	13	100.0%	0.0%

Education Level

	<u>2013</u>
Percent with Masters Degree and Above	28.4%
Percent Holding National Board for Professional Teaching Standards	0.0%

Years of Teaching Experience (2012-2013)

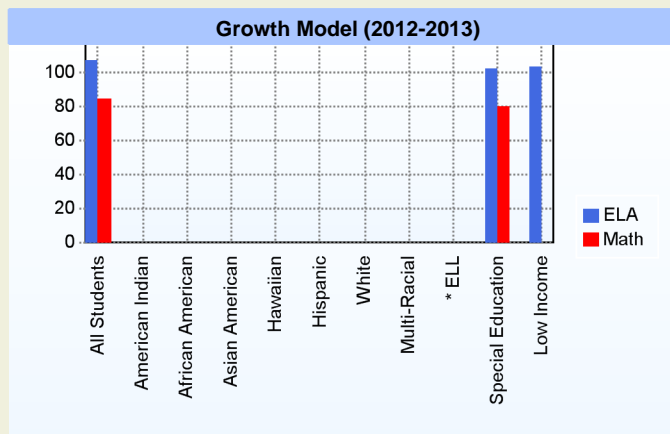
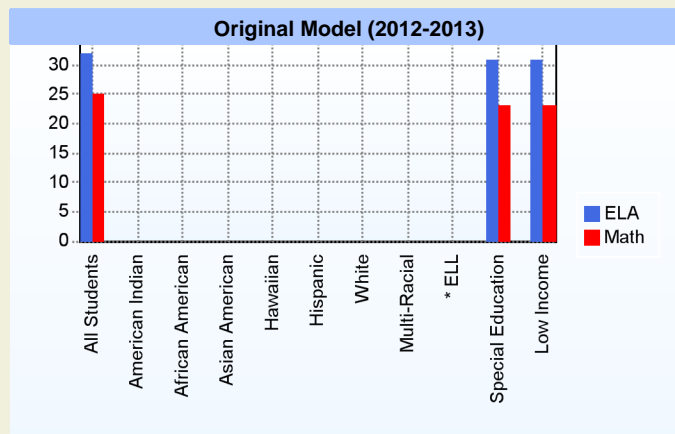


Curriculum Highlights

At Howard T Ennis School the curriculum is driven by each student's Individual Educational Plan. Students also have access to the regular educational curriculum on a daily basis.

AYP

Only groups with greater than 40 students are reported



* English Language Learner

* English Language Learner

% Test Participation (2012-2013)

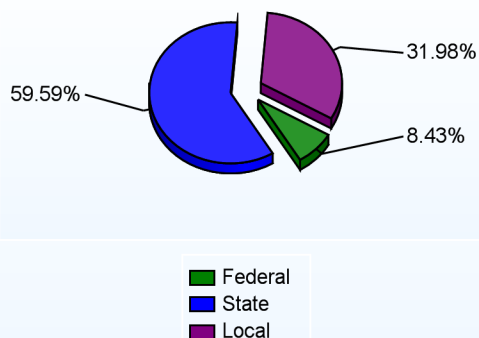
	<u>ELA</u>	<u>Math</u>	<u>ELA Goal</u>	<u>Math Goal</u>
All Students	100	100	95	95
American Indian	*	*	95	95
African American	*	*	95	95
Asian American	*	*	95	95
Hawaiian	*	*	95	95
Hispanic	*	*	95	95
White	*	*	95	95
Multi-Racial	*	*	95	95
English Language Learner	*	*	95	95
Special Education	100	100	95	95
Low Income	100	100	95	95



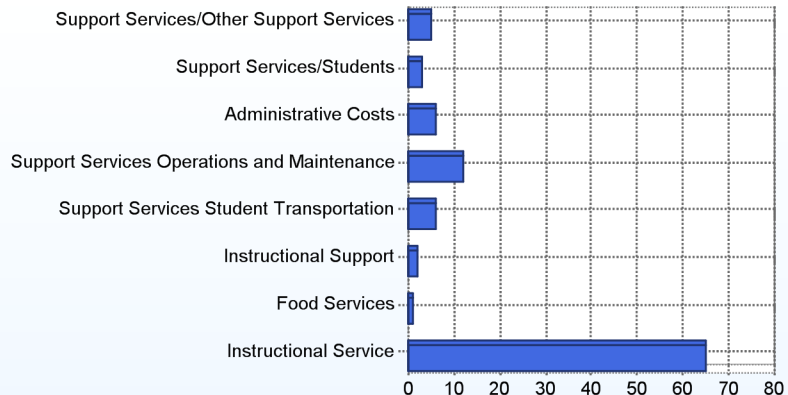
School Finances

District Expenditure per Pupil (2011-2012): \$11,736

District Sources of Revenue (2011-2012)



Percent District Allocation of Current Expenses by Category (2011-2012)



School Salary Allocation

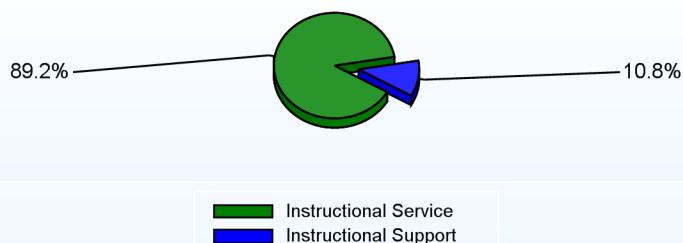
Instructional Service

	2013
Teachers	38.2%
Instructional Support	30.5%
Pupil Support	20.5%
Total	89.2%

Instructional Support

	2013
Administration	4.0%
Secretaries	2.3%
Food Services	1.6%
Maintenance	2.9%
Total	10.8%

Instructional vs. Support (2012-2013)



For further information and detailed reports, visit

<http://profiles.doe.k12.de.us>

or contact your local school district office.

Glossary: <http://profiles.doe.k12.de.us/glossary.aspx>



Delaware Department of Education

John G. Townsend Building
401 Federal Street, Suite #2
Dover, Delaware, 19901 - 3639
Phone: (302) 735-4000

District: Indian River School District**Telephone:** (302) 934-3216**Address:** 124184 Godwin School Rd, Millsboro DE 19966**Web:** www.sc.irsd.k12.de.us**Principal:****AYP:** Not Aplicable**Recently Arrived ELL Students**

	<u>2013</u>
Number of Students Not Tested on ELA Assessment	0



Student - School Safety and Discipline

Number of Reported Offenses (2012-2013)		
	District	State
School Crimes (Title 14, Delaware Code, §4112)	38	579
Department of Education (DOE) Offenses	286	10732

Percent of Students Suspended/Expelled	
	2013
District Percentage	12%
State Percentage	14%

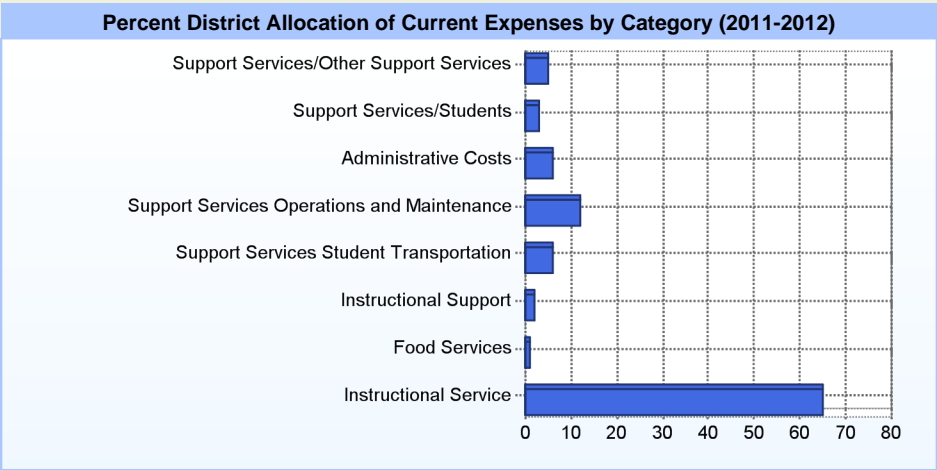
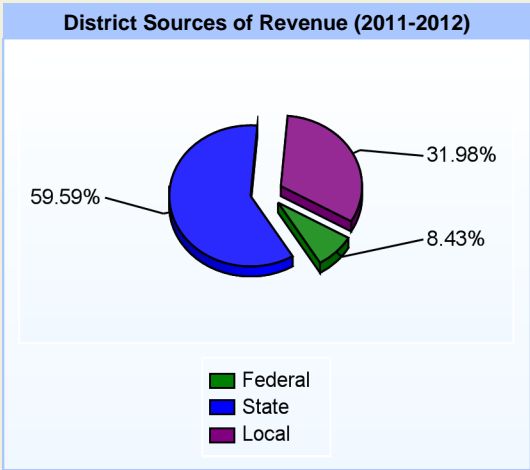
Our Staff

Staff by Race/Ethnicity	
	2013
American Indian	0.0%
African American	0.0%
Asian American	0.0%
Hispanic	0.0%
White	0.0%



School Finances

District Expenditure per Pupil (2011-2012): \$11,736



For further information and detailed reports, visit

<http://profiles.doe.k12.de.us>

or contact your local school district office.

Glossary: <http://profiles.doe.k12.de.us/glossary.aspx>



Delaware Department of Education

John G. Townsend Building
401 Federal Street, Suite #2
Dover, Delaware, 19901 - 3639
Phone: (302) 735-4000