



District: Cape Henlopen School District
Address: 1270 Kings Highway, Lewes DE 19958
School District Superintendent: Robert Fulton

Telephone: (302) 645-6686
Web: www.capehenlopenschools.com

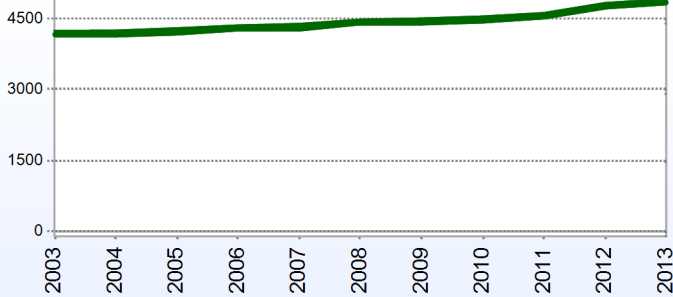
School Board Members

Sgt. Spencer Brittingham, President
Jennifer Burton, Board Member
Sandi Minard, Board Member
Dr. Sara Wilkinson, Board Member

Dr. Roni Posner, Vice President
Andrew Lewis, Board Member
Noble Prettyman, Board Member
Robert Fulton, Executive Secretary

District Information

Enrollment History



Students Who Reside in the District

	2013
Number of Students in Public Schools (Non Charter)	4,930
Percent of Students in Public Schools (Non Charter)	93.4%
Number of Students in Non-Public Schools	350
Percent of Students in Non-Public Schools	6.6%

Fall Enrollment

	2012	2013
Pre-Kindergarten	50	68
Kindergarten	410	413
Grade 1	408	445
Grade 2	409	388
Grade 3	406	406
Grade 4	360	395
Grade 5	399	361
Grade 6	379	380
Grade 7	350	386
Grade 8	292	348
Grade 9	399	326
Grade 10	379	360
Grade 11	328	370
Grade 12	276	284
Total	4,845	4,930

Enrollment by Race/Ethnicity

	2012	2013
African American	15.6%	15.3%
American Indian	0.6%	0.5%
Asian	1.9%	1.8%
Hawaiian	0.1%	0.1%
Hispanic/Latino	11.7%	12.2%
White	67.3%	66.9%
Multi-Racial	2.8%	3.2%

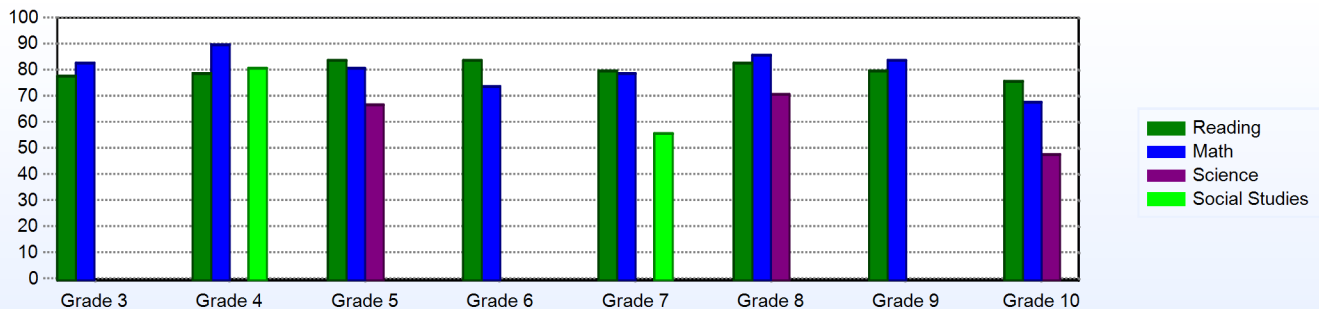
Other Student Characteristics

	2012	2013
English Language Learner	3.9%	3.6%
Low Income	49.0%	47.2%
Special Education	16.0%	16.4%
Enrolled for Full Year	100.0%	N/A%

Advanced Placement (AP)

	2012
Advanced Placement Courses	28
No. of Students Enrolled	204
No. of Exams Taken	259
Total No. of Exams Passed	81

Percentage of Students Meeting State Standards



District Staff

Number of Staff

	2013
Teachers	374
Librarians	1
Instructional Support	161
Pupil Support	66
Administrators	25
Secretaries	89
Food Service	47
Maintenance	60
Not Classified	14
Total	836

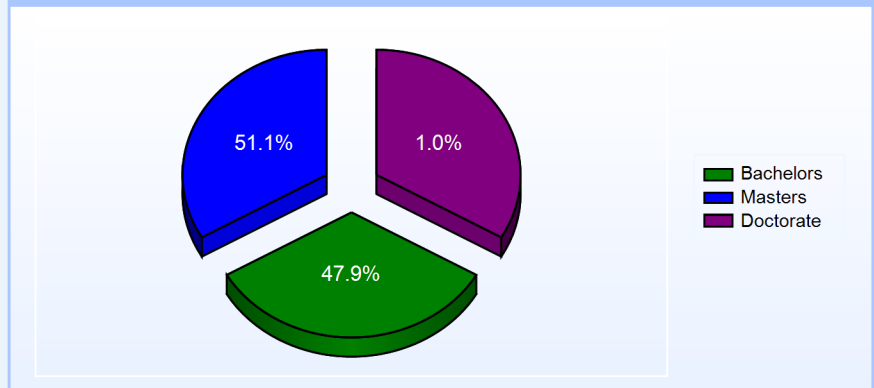
Percentage of Classes Taught by Highly Qualified Teachers

	Total Classes	% Highly Qualified
English	63	96.8%
Reading/ Language Arts	77	93.5%
Arts	130	100.0%
Foreign Languages	43	100.0%
Science	86	87.2%
Mathematics	137	94.2%
Geography	14	100.0%
Civics & Government	50	100.0%
Social Studies	37	78.4%
History	14	92.9%
Elementary General	185	95.7%

School Choice

	2014
Number of Schools with Choice Students:	7
Number of Local Choice Students: (choice students from the same district)	154
Number of State Choice Students: (choice students from another district)	173
Number of Federal Choice Students: (NCLB School Under Improvement)	0
Number of Federal Choice Students: (NCLB Unsafe School)	0
Number of Federal Choice Students: (NCLB Victim of a Violent Felony)	0

Education Level



Graduation Rate - ESEA 4 Year Adjusted

	2011	2012
	ESEA	ESEA
All Students	75.5%	80.7%
American Indian	66.7%	100.0%
African American	71.1%	73.2%
Asian American	83.3%	100.0%
Hispanic	68.8%	64.0%
White	77.4%	83.4%
English Language Learner	77.8%	53.8%
Special Education	51.6%	63.9%
Low Income	65.8%	74.6%

Year End Position

	Year-End Balance	Expenditures	Percentage
2008	\$5,308,651.00	\$63,285,807.00	8.4%
2009	\$5,276,338.00	\$67,957,345.00	7.8%
2010	\$5,294,801.00	\$72,556,936.00	7.3%
2011	\$8,237,330.00	\$73,910,571.00	11.1%
2012	\$11,182,160.00	\$70,072,643.00	16.0%

Persistently Dangerous School

The school district has no "Persistently Dangerous Schools"

District Information

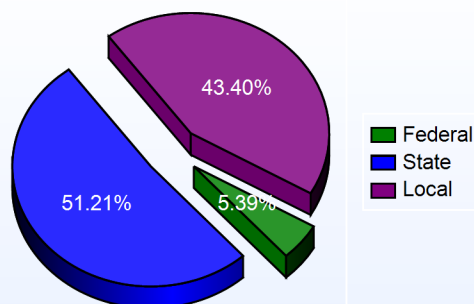
District DropOut Information						
	<u>2010</u>		<u>2011</u>		<u>2012</u>	
	<u>Count</u>	<u>Percent</u>	<u>Count</u>	<u>Percent</u>	<u>Count</u>	<u>Percent</u>
District	52	3.9%	64	4.8%	39	2.8%

Delaware Accountability		
<u>School Category</u>	<u>School</u>	<u>AYP</u>
Elementary	H. O. Brittingham Elementary School	Not Met
	Milton Elementary School	Met
	Rehoboth Elementary School	Met
	Shields (Richard A.) Elementary School	Met
Middle	Beacon Middle School	Met
	Mariner Middle School	Met
High School	Cape Henlopen High School	Met
Other	Sussex Consortium	Not Met

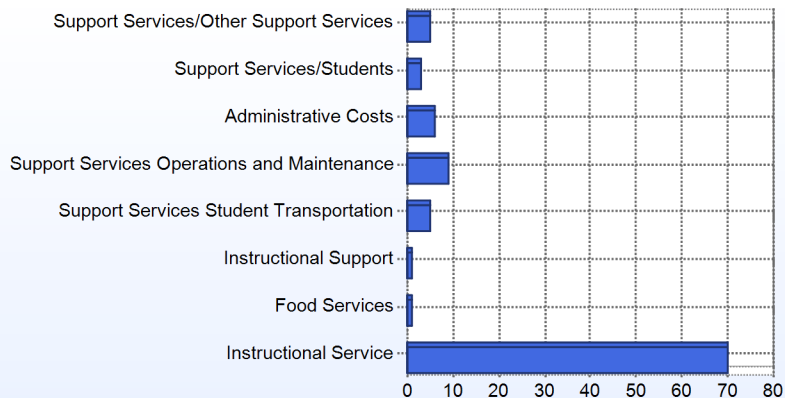
School Finances

District Expenditure per Pupil: \$14,463

District Sources of Revenue



Percent District Allocation of Current Expenses by Category



District Salary Allocation

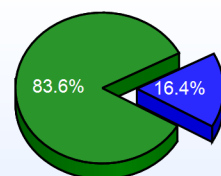
Instructional Service

	2013
Teachers	62.3%
Librarians	0.2%
Instructional Support	11.4%
Pupil Support	9.7%
Total	83.6%

Instructional Support

	2013
Administration	5.5%
Secretaries	3.3%
Food Services	2.2%
Maintenance	4.9%
Not Classified	0.5%
Total	16.4%

Instructional Vs Support



■ Instructional Service
■ Instructional Support

Snapshot of Average Teacher Salaries

	Bachelor		Master			Doctorate
	4 years or Less	15-19 Years	4 years or Less	15-19 Years	30 Years or More	15-19 Years
Snapshot of Average Teacher Salaries	\$40,858	\$51,422	\$47,001	\$69,739	\$73,095	\$81,615

For further information and detailed reports, visit

<http://profiles.doe.k12.de.us>

or contact your local district office.



Delaware Department of Education

John G. Townsend Building
 401 Federal Street, Suite #2
 Dove, Delaware, 19901 - 3639
 Phone: (302) 735-4000

District: Cape Henlopen School District
Address: 400 Mulberry Street, Milton DE 19968
Principal: Cristy Greaves
AYP: Not Met

Telephone: (302) 684-8522
Web: www.capehenlopeschools.com/education/school/school.php?sectionid=32

School Demographics

Fall Enrollment		
	2012	2013
Kindergarten	90	107
Grade 1	91	100
Grade 2	88	87
Grade 3	94	84
Grade 4	71	88
Grade 5	87	70
Total	521	536

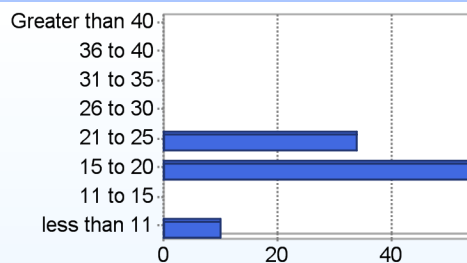
Enrollment by Race/Ethnicity		
	2012	2013
African American	26.5%	24.3%
American Indian	0.2%	0.2%
Asian	1.0%	0.6%
Hispanic/Latino	29.0%	30.8%
White	39.7%	39.2%
Multi-Racial	3.6%	5.0%

Other Student Characteristics		
	2012	2013
English Language Learner	15.0%	14.6%
Low Income	77.4%	77.4%
Special Education	10.9%	11.8%
Enrolled for Full Year	100.0%	N/A

Recently Arrived ELL Students	
	2013
Number of Students Not Tested on ELA Assessment	0

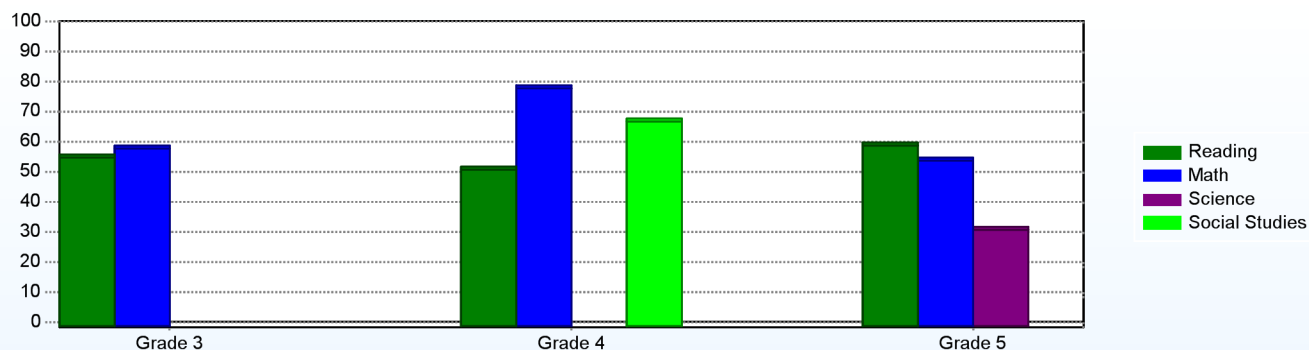
School Promotion by Grade	
	2012
Kindergarten	100.0%
Grade 1	95.6%
Grade 2	96.6%
Grade 3	100.0%
Grade 4	100.0%
Grade 5	98.9%

Class Size (Percentage by Range) (2012-2013)



Student Achievement

Percentage of Students Meeting State Standards (2012-2013)



Exemplary Programs

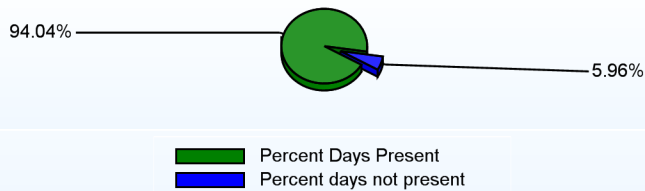
H.O. Brittingham offers many exciting opportunities for our students throughout the school year, among them are Math Olympiad, HOSTS, Read Aloud Delaware, Mini Society, Challenge 24, What in the World, Flight, 4th/5th Grade Chorus, and 5th Grade Instrumental Band. As a Title I school, we combine a variety of resources to enhance teaching and learning. We use our entire professional and para professional staff to provide students with additional instructional support throughout the day. Our Teacher/ Parent/ Student Compact ensures that everyone understands their role in helping students learn at home, endorsing teachers' high expectations, and helping to make the school a safe and caring place. We have a 21st Century Community Learning Center Grant partnering with Clear Space Productions to enhance our students' language skills through creative dramatics, song, dance, Odyssey Language Arts, Readers' theater, and Writing. The program runs two days a week afterschool during the school year.

Student - School Safety and Discipline

Number of Reported Offenses (2012-2013)

	<u>School</u>	<u>District</u>	<u>State</u>
School Crimes (Title 14, Delaware Code, §4112)		3	579
Department of Education (DOE) Offenses		134	10732
All School Safety Policy in Place	Yes		

Percent Days Present (2012-2013)



Suspensions and Expulsions

	<u>2013</u>
Number of Suspensions	48
Number of Expulsions	0
Count of Students Suspended/Expelled	22
September 30 Enrollment	536
Percent of Students Suspended/Expelled	4%
District Percentage	7%
State Percentage	14%

Our Staff

Number of Instructional Staff		Staff by Race/Ethnicity		Staffing Ratios	
	<u>2013</u>		<u>2013</u>		<u>2013</u>
Teachers	39	American Indian	0.0%	Students Per Teacher	14
Instructional Support	11	African American	7.0%	Students Per Administrator	268
Pupil Support	5	Asian American	0.0%	Students Per Instructional Staff	11
Total	55	Hispanic	5.3%	Students Per Pupil Support Staff	107
		White	87.7%	School Staff Per Administrator	34

Staff Qualifications

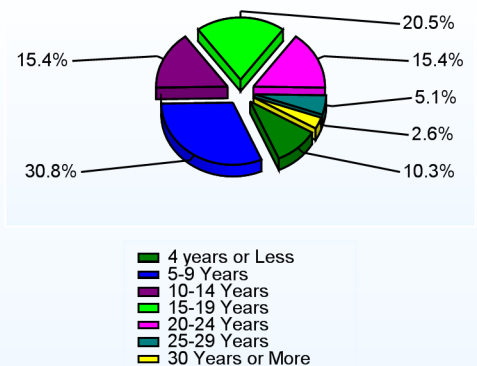
Percentage of Classes Taught by Highly Qualified Teachers (2012-2013)

	<u>Total Classes</u>	<u>% Highly Qualified</u>	<u>% Not Highly Qualified</u>
Reading/ Language Arts	1	100.0%	0.0%
Arts	2	100.0%	0.0%
Elementary General	28	100.0%	0.0%

Education Level

	<u>2013</u>
Percent with Masters Degree and Above	47.4%
Percent Holding National Board for Professional Teaching Standards	2.6%

Years of Teaching Experience (2012-2013)

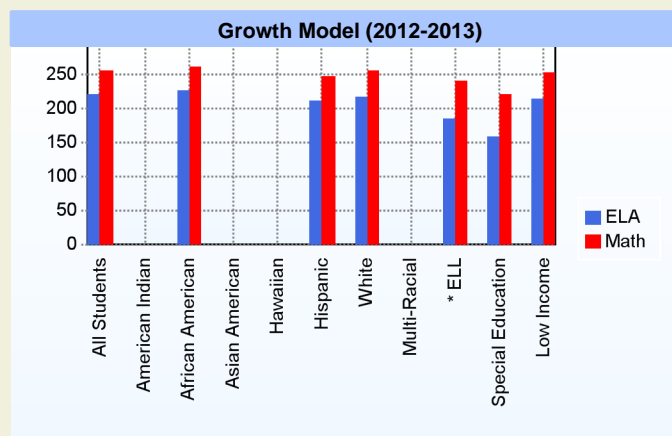
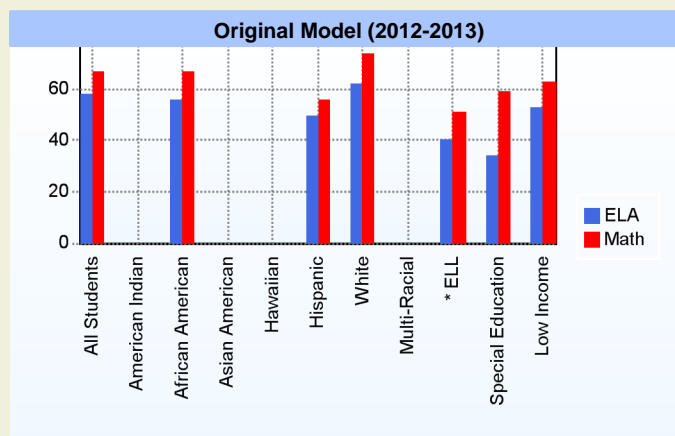


Curriculum Highlights

Every effort is made by teachers and staff to maintain high academic achievement of students. Special emphasis is given to reading, writing, and math skills. DCAS test scores show significant gains in all grades. Students have the support of an on-site Reading Specialist and Math Specialist who work with students and staff members to ensure the success of all. We continue to provide individualized instruction in reading through our HOSTS program utilizing the tremendous support of our community mentors. Students in grade 2-5 have 24/7 access to the online Odyssey Language Arts and Math programs.

AYP

Only groups with greater than 40 students are reported



* English Language Learner

* English Language Learner

% Test Participation (2012-2013)

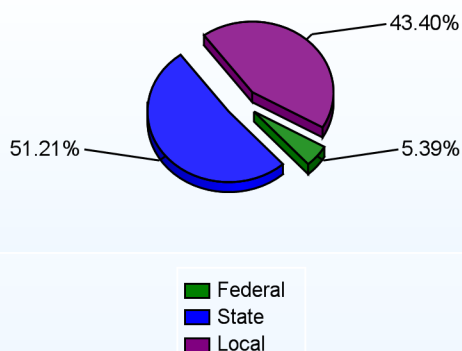
	<u>ELA</u>	<u>Math</u>	<u>ELA Goal</u>	<u>Math Goal</u>
All Students	100	100	95	95
American Indian	*	*	95	95
African American	100	100	95	95
Asian American	*	*	95	95
Hawaiian	*	*	95	95
Hispanic	100	100	95	95
White	99	100	95	95
Multi-Racial	*	*	95	95
English Language Learner	100	100	95	95
Special Education	97	100	95	95
Low Income	100	100	95	95



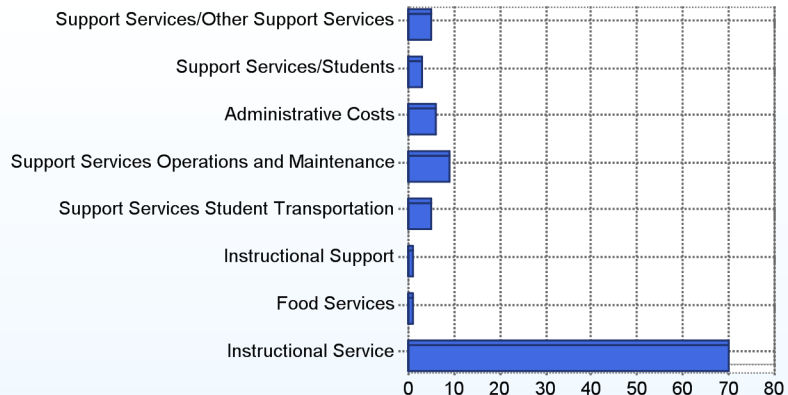
School Finances

District Expenditure per Pupil (2011-2012): \$14,463

District Sources of Revenue (2011-2012)



Percent District Allocation of Current Expenses by Category (2011-2012)



School Salary Allocation

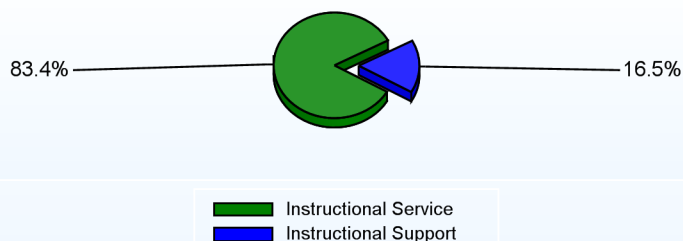
Instructional Service

	2013
Teachers	68.3%
Instructional Support	8.6%
Pupil Support	6.5%
Total	83.4%

Instructional Support

	2013
Administration	6.2%
Secretaries	2.0%
Food Services	3.2%
Maintenance	5.1%
Total	16.5%

Instructional vs. Support (2012-2013)



For further information and detailed reports, visit

<http://profiles.doe.k12.de.us>

or contact your local school district office.

Glossary: <http://profiles.doe.k12.de.us/glossary.aspx>



Delaware Department of Education

John G. Townsend Building
401 Federal Street, Suite #2
Dover, Delaware, 19901 - 3639
Phone: (302) 735-4000

Shields (Richard A.) Elementary School (School Year 2012-13)

Page 1 of 4

District: Cape Henlopen School District
Address: 910 Shields Avenue, Lewes DE 19958
Principal: Jennifer Nauman
AYP: Met

Telephone: (302) 645-7748
Web: www.capehenlopenschools.com/education/school/school.php?sectionid=36

School Demographics

Fall Enrollment		
	2012	2013
Kindergarten	123	107
Grade 1	101	138
Grade 2	105	102
Grade 3	109	115
Grade 4	104	115
Grade 5	93	104
Total	635	681

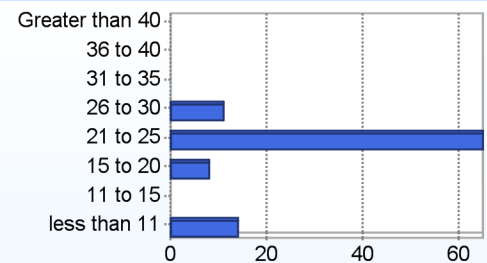
Enrollment by Race/Ethnicity		
	2012	2013
African American	10.9%	11.2%
American Indian	0.8%	0.7%
Asian	2.8%	2.6%
Hawaiian	0.2%	0.1%
Hispanic/Latino	8.7%	8.4%
White	71.5%	71.1%
Multi-Racial	5.2%	5.9%

Other Student Characteristics		
	2012	2013
English Language Learner	2.8%	2.6%
Low Income	40.5%	39.8%
Special Education	7.4%	7.0%
Enrolled for Full Year	100.0%	N/A

Recently Arrived ELL Students	
	2013
Number of Students Not Tested on ELA Assessment	1

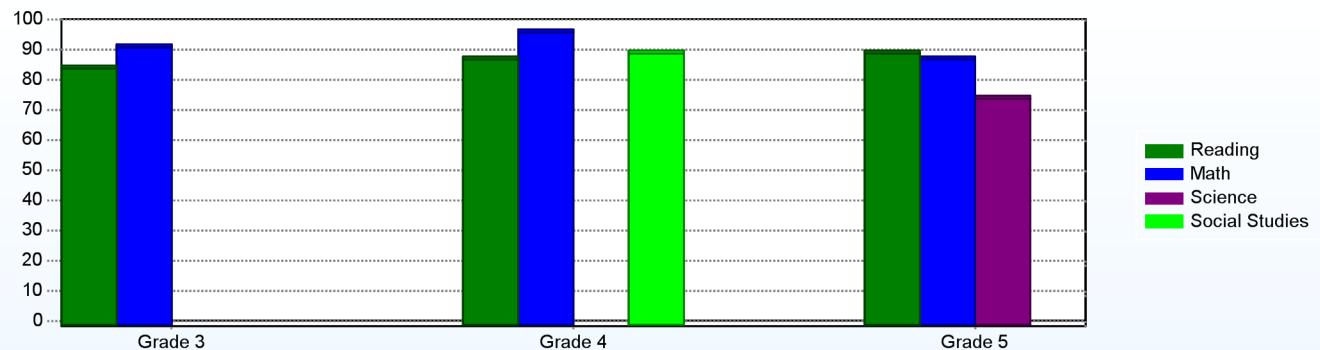
School Promotion by Grade	
	2012
Kindergarten	100.0%
Grade 1	98.0%
Grade 2	100.0%
Grade 3	100.0%
Grade 4	100.0%
Grade 5	100.0%

Class Size (Percentage by Range) (2012-2013)



Student Achievement

Percentage of Students Meeting State Standards (2012-2013)



Exemplary Programs

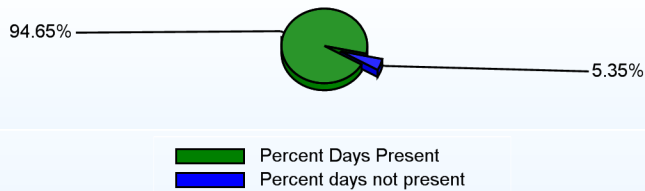
The Shields Elementary School staff continues to implement exemplary programs which meet students' needs in a variety of areas resulting in a well-rounded curriculum. In addition to outstanding instruction in the core subject areas, efforts are made to address positive reinforcement through PBS (Positive Behavior Supports), academic enrichment, technology in the classroom, grouping configurations, and integration of regular and special needs students. HOSTS reading program uses community volunteers to support reading instruction. Parent volunteers are welcomed and are present in the classrooms. Furthermore, our school unites parents and teachers to challenge our students with Odyssey of the Mind. This is an international educational program where team members apply their creativity to solve problems that require them to work collaboratively in a group. In order to further challenge our highly abled learners, students are exposed to Science Technology Engineering and Math (STEM) kits.

Student - School Safety and Discipline

Number of Reported Offenses (2012-2013)

	<u>School</u>	<u>District</u>	<u>State</u>
School Crimes (Title 14, Delaware Code, §4112)		3	579
Department of Education (DOE) Offenses		134	10732
All School Safety Policy in Place	Yes		

Percent Days Present (2012-2013)



Suspensions and Expulsions

	<u>2013</u>
Number of Suspensions	12
Number of Expulsions	0
Count of Students Suspended/Expelled	9
September 30 Enrollment	681
Percent of Students Suspended/Expelled	1%
District Percentage	7%
State Percentage	14%

Our Staff

Number of Instructional Staff

	<u>2013</u>
Teachers	39
Instructional Support	9
Pupil Support	8
Total	56

Staff by Race/Ethnicity

	<u>2013</u>
American Indian	0.0%
African American	3.4%
Asian American	0.0%
Hispanic	0.0%
White	96.6%

Staffing Ratios

	<u>2013</u>
Students Per Teacher	18
Students Per Administrator	341
Students Per Instructional Staff	14
Students Per Pupil Support Staff	85
School Staff Per Administrator	34

Staff Qualifications

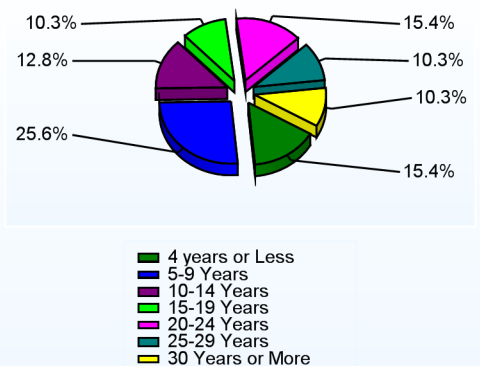
Percentage of Classes Taught by Highly Qualified Teachers (2012-2013)

	<u>Total Classes</u>	<u>% Highly Qualified</u>	<u>% Not Highly Qualified</u>
Reading/ Language Arts	1	100.0%	0.0%
Arts	2	100.0%	0.0%
Elementary General	35	97.1%	2.9%

Education Level

	<u>2013</u>
Percent with Masters Degree and Above	60.3%
Percent Holding National Board for Professional Teaching Standards	11.9%

Years of Teaching Experience (2012-2013)

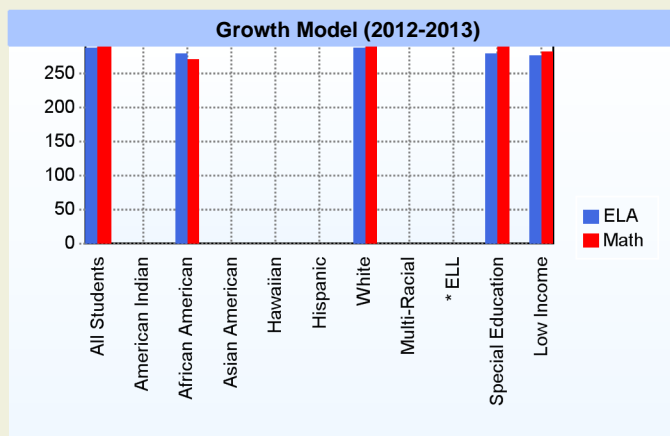
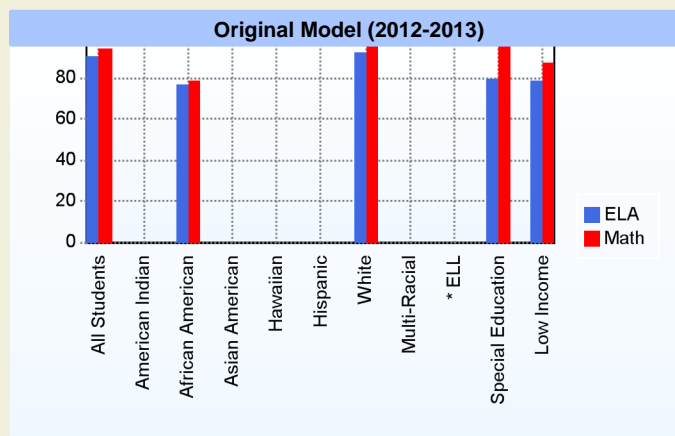


Curriculum Highlights

Shields uses the Open Court Reading program (@2009), Investigations for Math instruction, and the Smithsonian kits for Science instruction. The staff will use Learning Focused Strategies (Thompson, 2008) for lesson planning and implementation. Shields has placed 21st Century technology in all classes including state of the art computers, Smart Boards, and document cameras. Integration of curriculum and technology is necessary when providing and quality education for our students. Furthermore, a full-time Reading Specialist and Math Specialist provide direct services to students on both ends of the achievement spectrum allowing all students to be successful at Shields Elementary School.

AYP

Only groups with greater than 40 students are reported



* English Language Learner

* English Language Learner

% Test Participation (2012-2013)

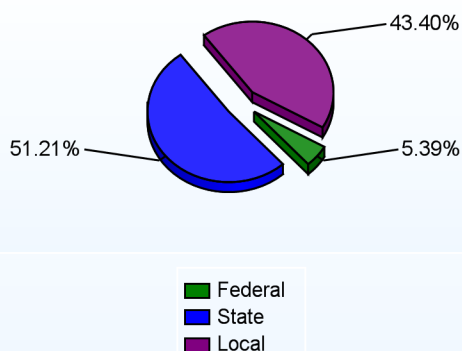
	ELA	Math	ELA Goal	Math Goal
All Students	99	100	95	95
American Indian	*	*	95	95
African American	100	100	95	95
Asian American	*	*	95	95
Hawaiian	*	*	95	95
Hispanic	*	*	95	95
White	99	100	95	95
Multi-Racial	*	*	95	95
English Language Learner	*	*	95	95
Special Education	97	100	95	95
Low Income	98	100	95	95



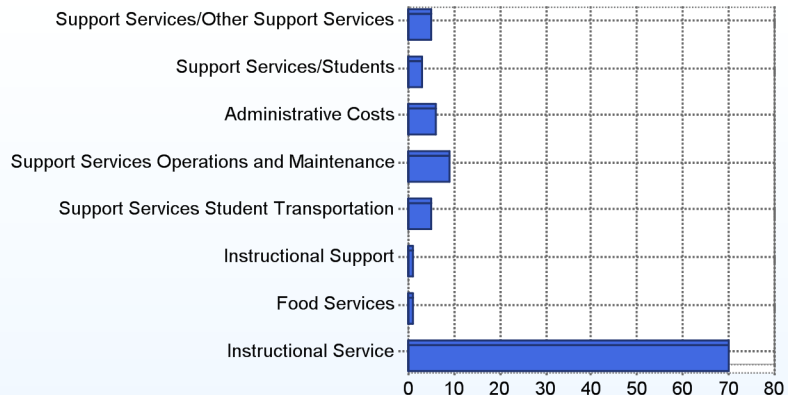
School Finances

District Expenditure per Pupil (2011-2012): \$14,463

District Sources of Revenue (2011-2012)



Percent District Allocation of Current Expenses by Category (2011-2012)



School Salary Allocation

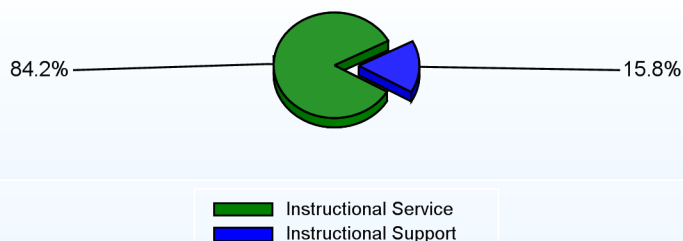
Instructional Service

	2013
Teachers	68.2%
Instructional Support	6.4%
Pupil Support	9.6%
Total	84.2%

Instructional Support

	2013
Administration	6.0%
Secretaries	1.9%
Food Services	2.9%
Maintenance	5.0%
Total	15.8%

Instructional vs. Support (2012-2013)



For further information and detailed reports, visit

<http://profiles.doe.k12.de.us>

or contact your local school district office.

Glossary: <http://profiles.doe.k12.de.us/glossary.aspx>



Delaware Department of Education

John G. Townsend Building
401 Federal Street, Suite #2
Dover, Delaware, 19901 - 3639
Phone: (302) 735-4000

District: Cape Henlopen School District
Address: 16391 Harbeson Rd., Milton DE 19968
Principal: Alfred Best
AYP: Met

Telephone: (302) 684-8516
Web: www.capehenlopenschools.com/education/school/school.php?sectionid=33

School Demographics

Fall Enrollment		
	2012	2013
Grade 6	173	170
Grade 7	151	183
Grade 8	141	155
Total	465	508

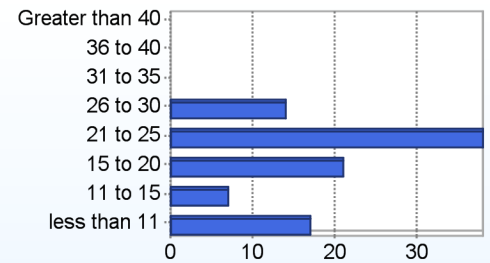
Recently Arrived ELL Students	
	2013
Number of Students Not Tested on ELA Assessment	0

Enrollment by Race/Ethnicity		
	2012	2013
African American	23.9%	23.8%
American Indian	1.1%	1.4%
Asian	0.9%	1.0%
Hawaiian		0.2%
Hispanic/Latino	17.6%	17.9%
White	55.7%	53.9%
Multi-Racial	0.9%	1.8%

School Promotion by Grade	
	2012
Grade 6	99.4%
Grade 7	98.0%
Grade 8	100.0%

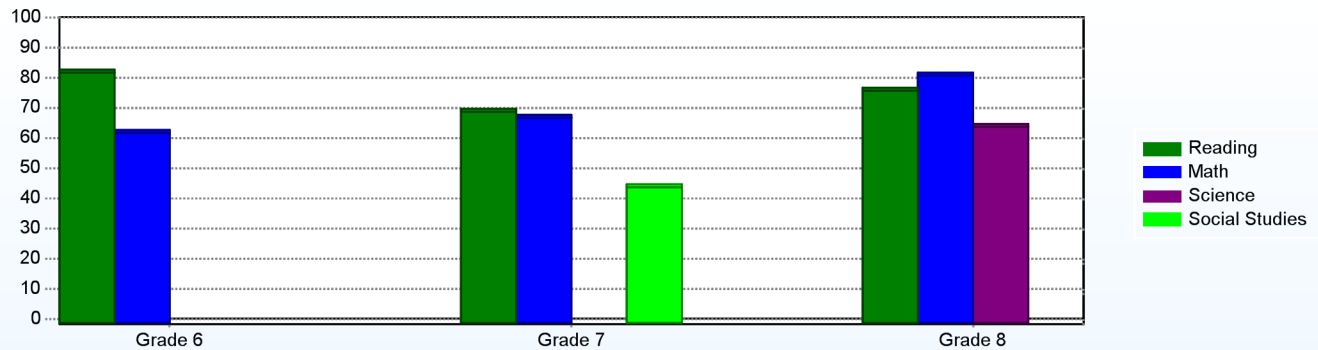
Other Student Characteristics		
	2012	2013
English Language Learner	3.9%	1.4%
Low Income	63.7%	61.0%
Special Education	18.1%	19.5%
Enrolled for Full Year	100.0%	N/A

Class Size (Percentage by Range) (2012-2013)



Student Achievement

Percentage of Students Meeting State Standards (2012-2013)



Exemplary Programs

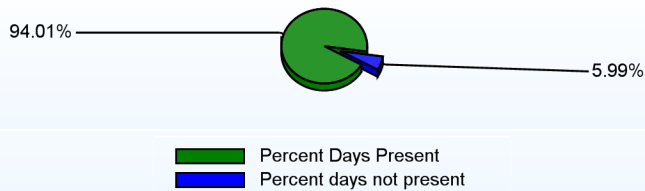
The Milton community is extremely proud of Mariner Middle School and all of the programs offered to our students and their families. Mariner was nominated by the Lt. Governor's Office during the 2008/2009 school year as a Model School of Excellence. We offer a variety of exemplary programs for students, staff, and parents. Our National Junior Honor Society and Student Government continue to raise money and provide support for a variety of local/national agencies and families. Staff, parents, and students at Mariner Middle School have helped to implement the following highly successful programs: Teacher Mentoring Program for At Risk Students, Peer Mentoring Program for all students, Positive Behavior Support Program, Student Portfolios with Achievement and Career Action Plans, Anti-Teasing Team, Lunch and Learn Program, Challenge Day & "To Be the Change Team". Our schedule emphasizes the four core subject areas of Language Arts, Math, Science, and Social Studies.

Student - School Safety and Discipline

Number of Reported Offenses (2012-2013)

	<u>School</u>	<u>District</u>	<u>State</u>
School Crimes (Title 14, Delaware Code, §4112)		3	579
Department of Education (DOE) Offenses	66	134	10732
All School Safety Policy in Place	Yes		

Percent Days Present (2012-2013)



Suspensions and Expulsions

	<u>2013</u>
Number of Suspensions	172
Number of Expulsions	0
Count of Students Suspended/Expelled	81
September 30 Enrollment	508
Percent of Students Suspended/Expelled	16%
District Percentage	7%
State Percentage	14%

Our Staff

Number of Instructional Staff

	<u>2013</u>
Teachers	39
Instructional Support	6
Pupil Support	3
Total	48

Staff by Race/Ethnicity

	<u>2013</u>
American Indian	0.0%
African American	4.2%
Asian American	0.0%
Hispanic	0.0%
White	95.8%

Staffing Ratios

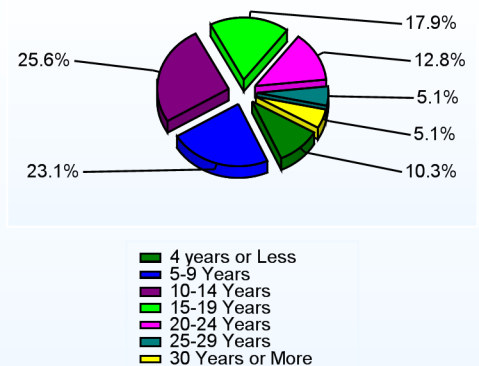
	<u>2013</u>
Students Per Teacher	13
Students Per Administrator	254
Students Per Instructional Staff	11
Students Per Pupil Support Staff	203
School Staff Per Administrator	30

Staff Qualifications

Percentage of Classes Taught by Highly Qualified Teachers (2012-2013)

	<u>Total Classes</u>	<u>% Highly Qualified</u>	<u>% Not Highly Qualified</u>
Reading/ Language Arts	40	97.5%	2.5%
Arts	43	100.0%	0.0%
Science	20	85.0%	15.0%
Mathematics	46	91.3%	8.7%
Social Studies	18	77.8%	22.2%
Elementary General	23	95.7%	4.3%

Years of Teaching Experience (2012-2013)



Education Level

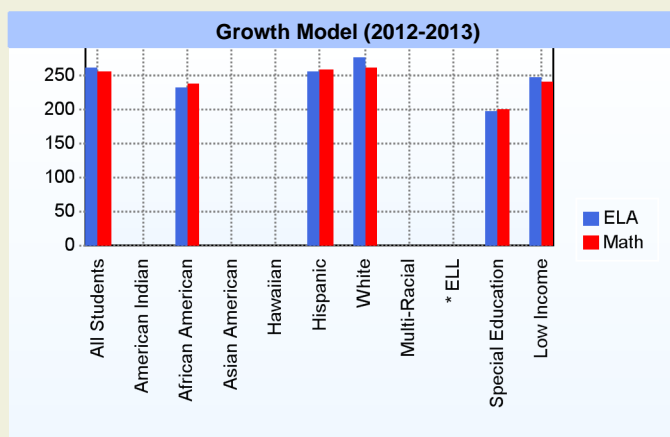
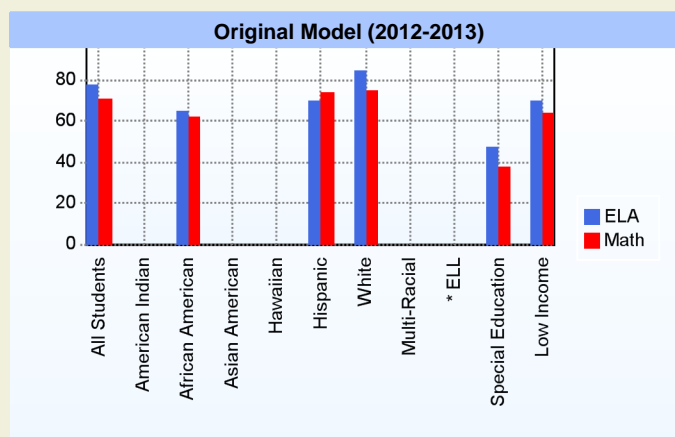
	<u>2013</u>
Percent with Masters Degree and Above	62.5%
Percent Holding National Board for Professional Teaching Standards	2.5%

Curriculum Highlights

Mariner Middle School offers a variety of programs and extra-curricular activities for students. Academic Challenge Courses in Math and English are offered at Del Tech College for 8th grade students who meet the district criteria. Enrichment courses that are designed to strengthen student's mastery in reading and math are taught by our Reading and Math Specialists. Over 200 sixth, seventh, and eighth grade students participate in our Concert Band, Chorus, and Drama Club. The Concert Band, Chorus, and Drama Club perform winter and spring shows in front of a large Cape Community Crowd. Many of these students will also participate in the annual talent shows. A majority of Mariner Students also participate in a variety of extra-curricular programs that include Football, Field hockey, Volleyball, Soccer, Cheerleading, Basketball, Wrestling, Track, Softball and Baseball.

AYP

Only groups with greater than 40 students are reported



* English Language Learner

* English Language Learner

% Test Participation (2012-2013)

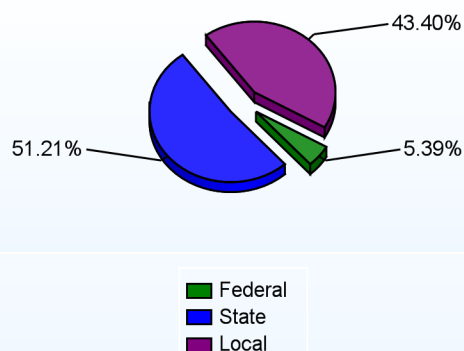
	<u>ELA</u>	<u>Math</u>	<u>ELA Goal</u>	<u>Math Goal</u>
All Students	100	100	95	95
American Indian	*	*	95	95
African American	100	100	95	95
Asian American	*	*	95	95
Hawaiian	*	*	95	95
Hispanic	100	100	95	95
White	100	100	95	95
Multi-Racial	*	*	95	95
English Language Learner	*	*	95	95
Special Education	99	100	95	95
Low Income	100	100	95	95



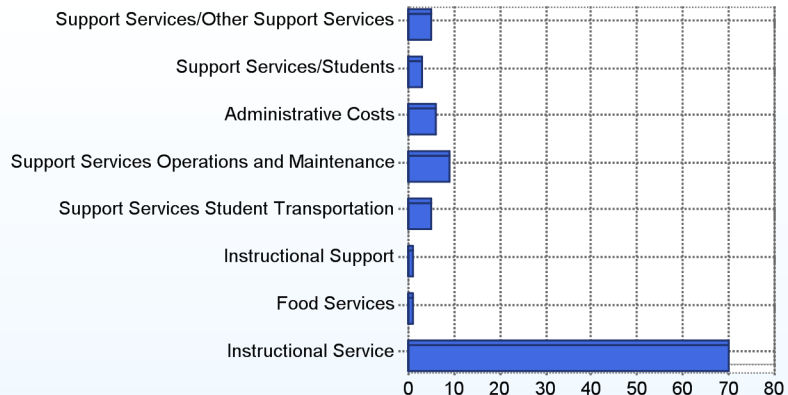
School Finances

District Expenditure per Pupil (2011-2012): \$14,463

District Sources of Revenue (2011-2012)



Percent District Allocation of Current Expenses by Category (2011-2012)



School Salary Allocation

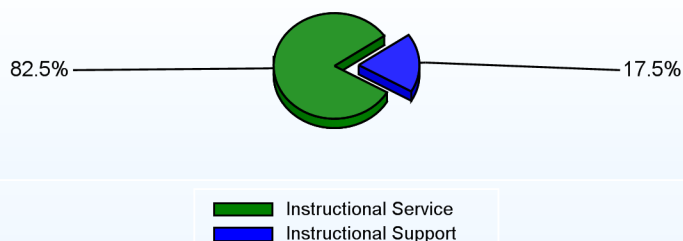
Instructional Service

	2013
Teachers	72.9%
Instructional Support	4.7%
Pupil Support	4.9%
Total	82.5%

Instructional Support

	2013
Administration	6.3%
Secretaries	2.4%
Food Services	3.6%
Maintenance	5.2%
Total	17.5%

Instructional vs. Support (2012-2013)



For further information and detailed reports, visit

<http://profiles.doe.k12.de.us>

or contact your local school district office.

Glossary: <http://profiles.doe.k12.de.us/glossary.aspx>



Delaware Department of Education

John G. Townsend Building
401 Federal Street, Suite #2
Dover, Delaware, 19901 - 3639
Phone: (302) 735-4000

District: Cape Henlopen School District
Address: 512 Federal Street, Milton DE 19968
Principal: Kevin Mumford
AYP: Met

Telephone: (302) 684-2516
Web: www.capehenlopeschools.com/education/school/school.php?sectionid=34

School Demographics

Fall Enrollment		
	2012	2013
Kindergarten	88	83
Grade 1	98	99
Grade 2	103	90
Grade 3	93	95
Grade 4	84	88
Grade 5	99	85
Total	565	540

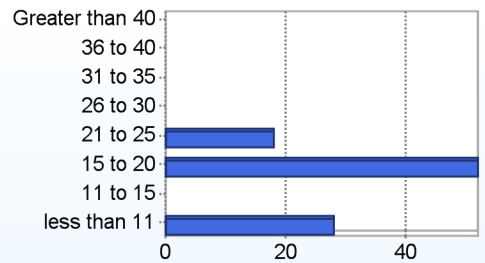
Enrollment by Race/Ethnicity		
	2012	2013
African American	11.0%	13.1%
American Indian	0.7%	0.4%
Asian	1.2%	0.9%
Hawaiian	0.2%	
Hispanic/Latino	8.8%	9.4%
White	73.8%	71.3%
Multi-Racial	4.2%	4.8%

Other Student Characteristics		
	2012	2013
English Language Learner	3.5%	4.1%
Low Income	43.0%	40.9%
Special Education	9.9%	9.8%
Enrolled for Full Year	100.0%	N/A

Recently Arrived ELL Students	
	2013
Number of Students Not Tested on ELA Assessment	0

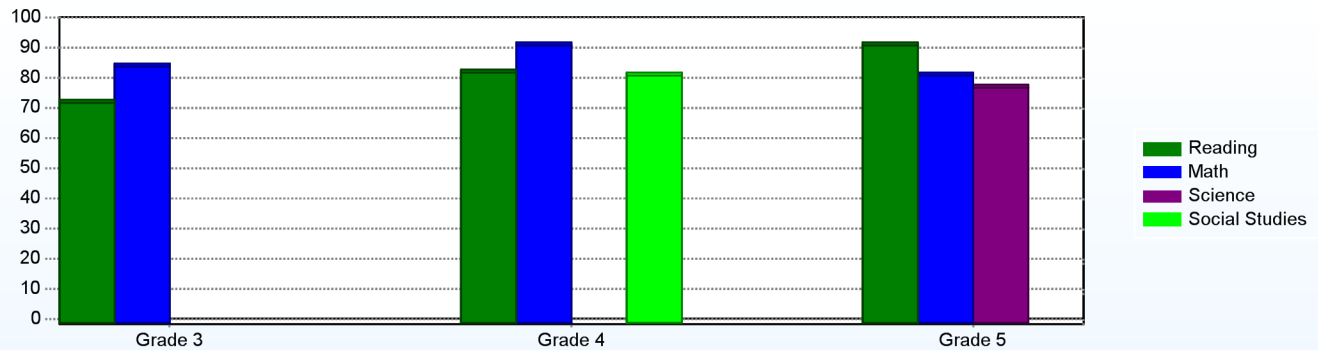
School Promotion by Grade	
	2012
Kindergarten	94.3%
Grade 1	87.8%
Grade 2	95.1%
Grade 3	96.8%
Grade 4	100.0%
Grade 5	99.0%

Class Size (Percentage by Range) (2012-2013)



Student Achievement

Percentage of Students Meeting State Standards (2012-2013)



Exemplary Programs

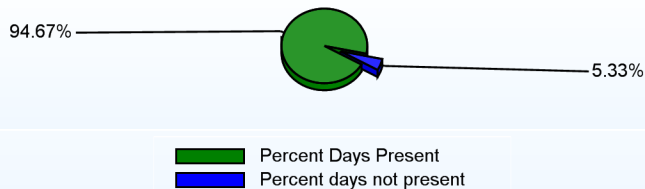
We are rated Superior by the DE DOE for test scores and AYP. We are a Positive Behavior Support Star School. Our 21st Century School Grant provides a summer camp and after-school enrichment and remediation. Young authors' Publishing Parties involve K-5 in writing, illustrating, and reading. The LEAP program helps primary students improve their reading skills. Two concerts are performed by 4th/5th grade chorus & 5th grade band; 2nd grade presents a theatrical production. We have Field Day & a Health Fair. PE Fitness Grams measure student flexibility, strength & cardio-endurance. We work closely with Nemours. Teachers and para are trained in CATCH, a program that increases physical fitness. Computer projects abound; grades 1-3 create books for classroom libraries. Students enter art & poetry in contests. A Safe Routes to School grant allows students to walk and bike to school. We are in Phase II of creating a Butterfly Garden with staff and community assistance.

Student - School Safety and Discipline

Number of Reported Offenses (2012-2013)

	<u>School</u>	<u>District</u>	<u>State</u>
School Crimes (Title 14, Delaware Code, §4112)		3	579
Department of Education (DOE) Offenses	4	134	10732
All School Safety Policy in Place	Yes		

Percent Days Present (2012-2013)



Suspensions and Expulsions

	<u>2013</u>
Number of Suspensions	19
Number of Expulsions	0
Count of Students Suspended/Expelled	13
September 30 Enrollment	540
Percent of Students Suspended/Expelled	2%
District Percentage	7%
State Percentage	14%

Our Staff

Number of Instructional Staff		Staff by Race/Ethnicity		Staffing Ratios	
	<u>2013</u>		<u>2013</u>		<u>2013</u>
Teachers	39	American Indian	0.0%	Students Per Teacher	14
Instructional Support	13	African American	8.5%	Students Per Administrator	270
Pupil Support	5	Asian American	3.4%	Students Per Instructional Staff	10
Total	57	Hispanic	1.7%	Students Per Pupil Support Staff	108
		White	86.4%	School Staff Per Administrator	36

Staff Qualifications

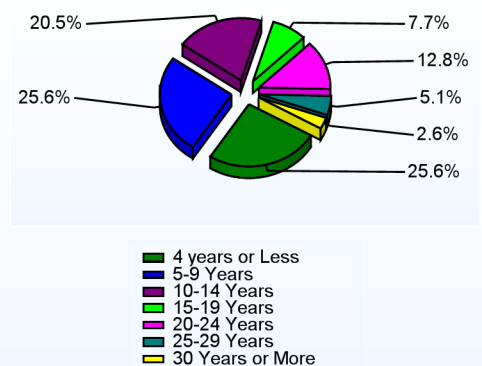
Percentage of Classes Taught by Highly Qualified Teachers (2012-2013)

	<u>Total Classes</u>	<u>% Highly Qualified</u>	<u>% Not Highly Qualified</u>
Arts	3	100.0%	0.0%
Elementary General	35	94.3%	5.7%

Education Level

	<u>2013</u>
Percent with Masters Degree and Above	52.5%
Percent Holding National Board for Professional Teaching Standards	4.8%

Years of Teaching Experience (2012-2013)

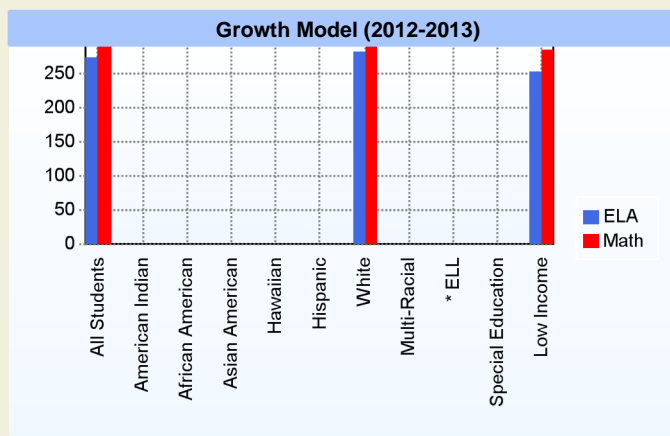
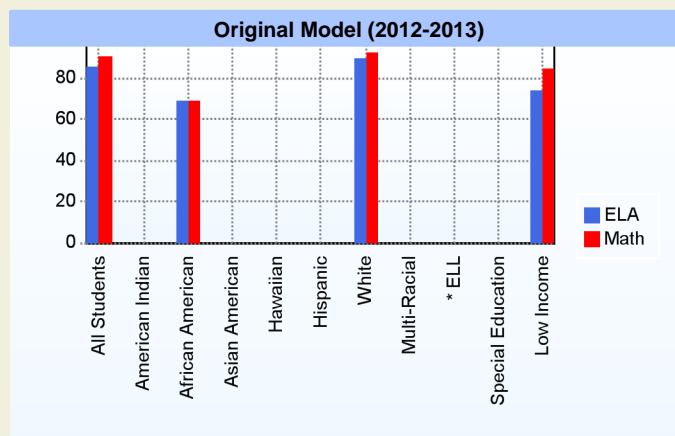


Curriculum Highlights

Students learn in an accepting and challenging environment to think critically, influence others positively and respect diversity. Our academic program is anchored on DE standards. Teachers use Open Court reading, Investigations math and Smithsonian science materials. Related Arts for K-5: Art, Music, Computers, PE and Library. H.O.S.T.S. provides individualized & small group reading instruction with voluntary mentors. Full-time Reading and Math Specialists provide direct services to students on both ends of the achievement spectrum. Cutting-edge technology is available & utilized in every classroom. Support is provided for special education and English language learners. The administration & highly qualified teachers promote an atmosphere of respect for individuality. Students are given opportunities to cultivate acquired knowledge through differentiated instruction and ongoing assessment. Max Thompson's Learning Focused Strategies are used for planning and instruction.

AYP

Only groups with greater than 40 students are reported



* English Language Learner

* English Language Learner

% Test Participation (2012-2013)

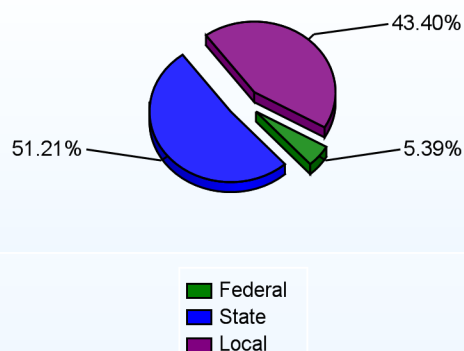
	<u>ELA</u>	<u>Math</u>	<u>ELA Goal</u>	<u>Math Goal</u>
All Students	99	100	95	95
American Indian	*	*	95	95
African American	100	100	95	95
Asian American	*	*	95	95
Hawaiian	*	*	95	95
Hispanic	*	*	95	95
White	99	100	95	95
Multi-Racial	*	*	95	95
English Language Learner	*	*	95	95
Special Education	*	*	95	95
Low Income	99	100	95	95



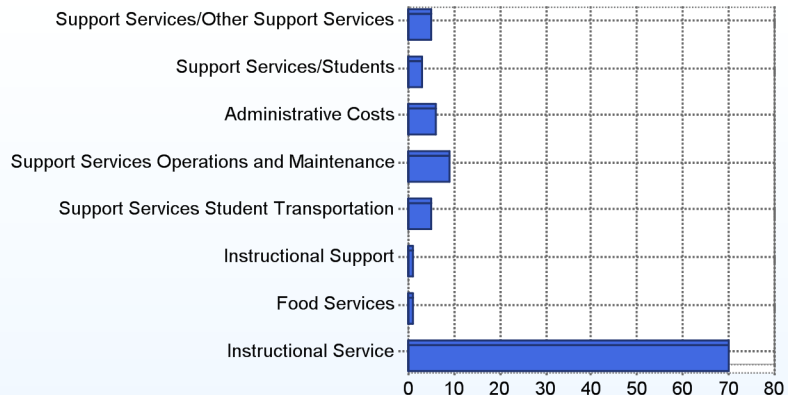
School Finances

District Expenditure per Pupil (2011-2012): \$14,463

District Sources of Revenue (2011-2012)



Percent District Allocation of Current Expenses by Category (2011-2012)



School Salary Allocation

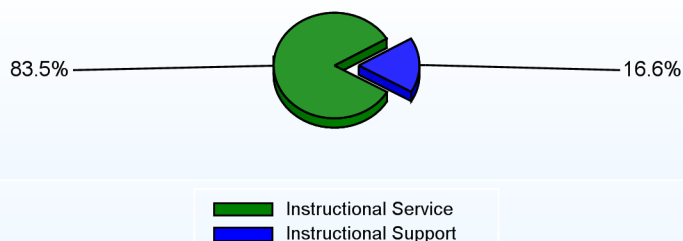
Instructional Service

	2013
Teachers	66.8%
Instructional Support	10.0%
Pupil Support	6.7%
Total	83.5%

Instructional Support

	2013
Administration	5.8%
Secretaries	1.8%
Food Services	3.0%
Maintenance	6.0%
Total	16.6%

Instructional vs. Support (2012-2013)



For further information and detailed reports, visit

<http://profiles.doe.k12.de.us>

or contact your local school district office.

Glossary: <http://profiles.doe.k12.de.us/glossary.aspx>



Delaware Department of Education

John G. Townsend Building
401 Federal Street, Suite #2
Dover, Delaware, 19901 - 3639
Phone: (302) 735-4000

District: Cape Henlopen School District

Telephone: (302) 227-2571

Address: 500 Stockley Street, Rehoboth Beach DE 19971

Web: www.capehenloopenschools.com/education/school/school.php?sectionid=35

Principal: Patricia Mumford

AYP: Met

School Demographics

Fall Enrollment		
	2012	2013
Kindergarten	96	107
Grade 1	109	97
Grade 2	98	100
Grade 3	96	95
Grade 4	82	89
Grade 5	102	82
Total	583	570

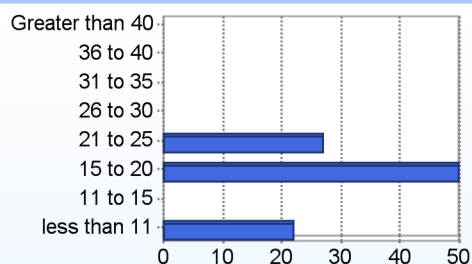
Enrollment by Race/Ethnicity		
	2012	2013
African American	9.9%	7.5%
American Indian	0.2%	0.4%
Asian	1.9%	1.8%
Hawaiian	0.2%	0.2%
Hispanic/Latino	11.5%	9.8%
White	72.0%	76.5%
Multi-Racial	4.3%	3.9%

Other Student Characteristics		
	2012	2013
English Language Learner	4.5%	4.7%
Low Income	43.2%	41.4%
Special Education	7.2%	8.1%
Enrolled for Full Year	100.0%	N/A

Recently Arrived ELL Students	
	2013
Number of Students Not Tested on ELA Assessment	2

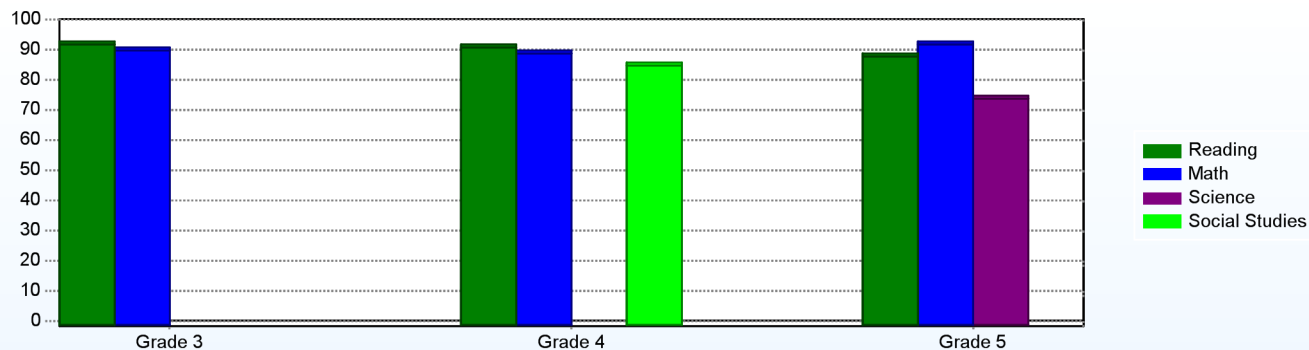
School Promotion by Grade	
	2012
Kindergarten	95.8%
Grade 1	97.2%
Grade 2	99.0%
Grade 3	100.0%
Grade 4	100.0%
Grade 5	100.0%

Class Size (Percentage by Range) (2012-2013)



Student Achievement

Percentage of Students Meeting State Standards (2012-2013)



Exemplary Programs

Rehoboth Elementary (RES) continues to implement the Positive Behavior Support program. Our school-wide expectations are Respect, Excellence and Safety. Students learn about the expectations for each area of the building through "Cool Tool" lessons. Expected behaviors are reinforced by awarding "Starfish" coupons. Rehoboth has a history of being an award winning Positive Behavior Support school.

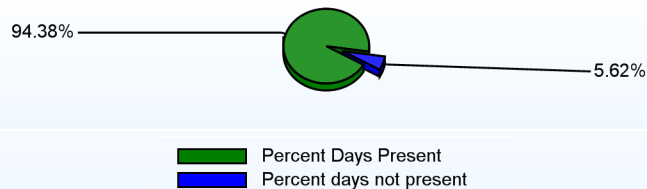
At Rehoboth Elementary we have a commitment to expose our students to a variety of fine arts opportunities. Every spring, students put on a Broadway-caliber musical featuring singing, dancing, and a beautiful set. One would never know that 3rd, 4th, and 5th graders are the main characters, ushers, and they run the light and sound equipment as it truly feels as if professionals are putting on the show. RES also features a top-notch general band, Jazz Band and Chorus which perform each season for students and the community.

Student - School Safety and Discipline

Number of Reported Offenses (2012-2013)

	<u>School</u>	<u>District</u>	<u>State</u>
School Crimes (Title 14, Delaware Code, §4112)		3	579
Department of Education (DOE) Offenses	1	134	10732
All School Safety Policy in Place	Yes		

Percent Days Present (2012-2013)



Suspensions and Expulsions

	<u>2013</u>
Number of Suspensions	14
Number of Expulsions	0
Count of Students Suspended/Expelled	8
September 30 Enrollment	570
Percent of Students Suspended/Expelled	1%
District Percentage	7%
State Percentage	14%

Our Staff

Number of Instructional Staff

	<u>2013</u>
Teachers	42
Instructional Support	13
Pupil Support	5
Total	60

Staff by Race/Ethnicity

	<u>2013</u>
American Indian	0.0%
African American	4.8%
Asian American	0.0%
Hispanic	0.0%
White	95.2%

Staffing Ratios

	<u>2013</u>
Students Per Teacher	14
Students Per Administrator	285
Students Per Instructional Staff	10
Students Per Pupil Support Staff	114
School Staff Per Administrator	37

Staff Qualifications

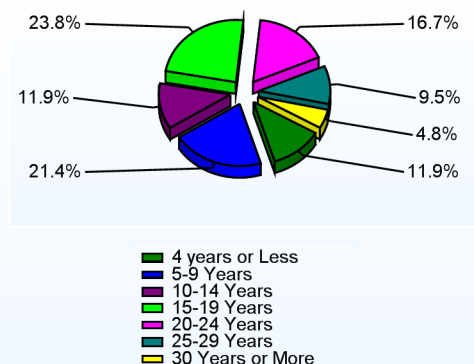
Percentage of Classes Taught by Highly Qualified Teachers (2012-2013)

	<u>Total Classes</u>	<u>% Highly Qualified</u>	<u>% Not Highly Qualified</u>
Reading/ Language Arts	1	100.0%	0.0%
Arts	2	100.0%	0.0%
Elementary General	34	97.1%	2.9%

Education Level

	<u>2013</u>
Percent with Masters Degree and Above	56.5%
Percent Holding National Board for Professional Teaching Standards	2.4%

Years of Teaching Experience (2012-2013)

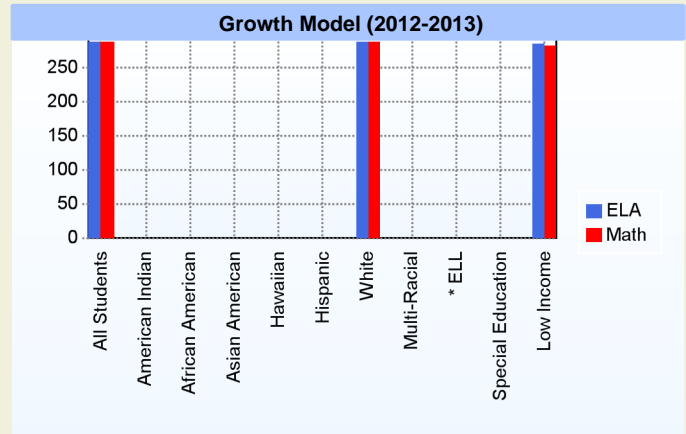
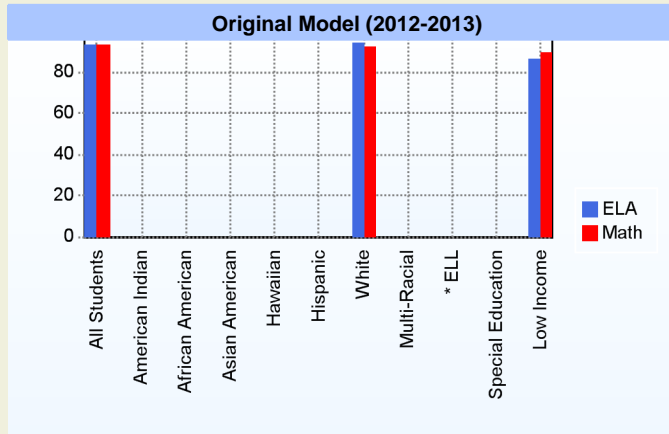


Curriculum Highlights

Our curriculum is based on Delaware and Common Core standards. We use the Imagine It reading series and Investigations math program to provide instruction for language arts and math respectively. To enhance our curriculum the students use Accelerated Reader (AR) which allows the students to read a book at their given reading level and take a computer-based comprehension/vocabulary quiz to check for understanding. With AR, almost every book in our library has an available quiz making it easy for students to find an AR book they enjoy. We reinforce basic math calculation with Math Facts in a Flash. Students use the web-based programs Reading Eggs and Study Island to practice the concepts taught through the curriculum for both reading and math. Students earn blue ribbons as they master the concepts. The use of technology in the forms of SmartBoards, laptops and the iPod touch engage students and make learning fun!

AYP

Only groups with greater than 40 students are reported



* English Language Learner

* English Language Learner

% Test Participation (2012-2013)

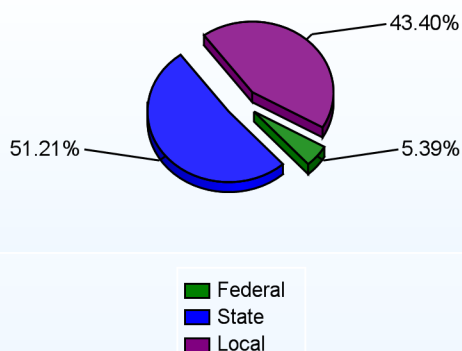
	<u>ELA</u>	<u>Math</u>	<u>ELA Goal</u>	<u>Math Goal</u>
All Students	99	100	95	95
American Indian	*	*	95	95
African American	*	*	95	95
Asian American	*	*	95	95
Hawaiian	*	*	95	95
Hispanic	*	*	95	95
White	100	100	95	95
Multi-Racial	*	*	95	95
English Language Learner	*	*	95	95
Special Education	*	*	95	95
Low Income	99	100	95	95



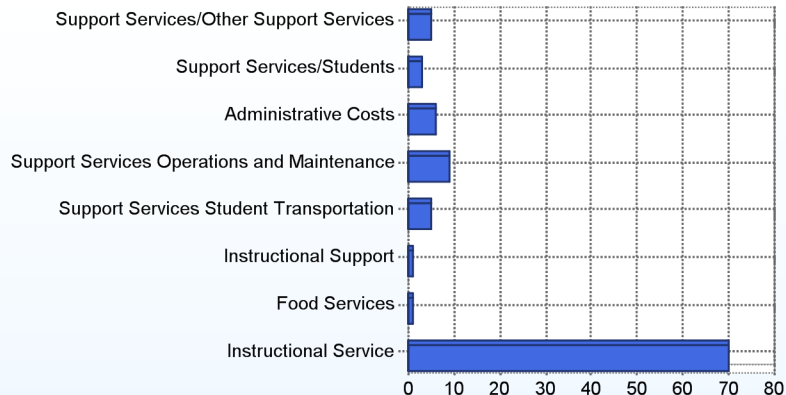
School Finances

District Expenditure per Pupil (2011-2012): \$14,463

District Sources of Revenue (2011-2012)



Percent District Allocation of Current Expenses by Category (2011-2012)



School Salary Allocation

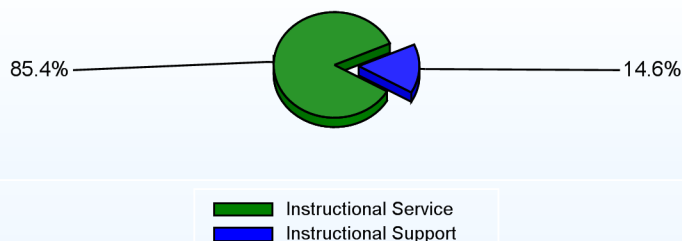
Instructional Service

	2013
Teachers	70.0%
Instructional Support	9.2%
Pupil Support	6.2%
Total	85.4%

Instructional Support

	2013
Administration	5.4%
Secretaries	1.9%
Food Services	2.7%
Maintenance	4.6%
Total	14.6%

Instructional vs. Support (2012-2013)



For further information and detailed reports, visit

<http://profiles.doe.k12.de.us>

or contact your local school district office.

Glossary: <http://profiles.doe.k12.de.us/glossary.aspx>



Delaware Department of Education

John G. Townsend Building
401 Federal Street, Suite #2
Dover, Delaware, 19901 - 3639
Phone: (302) 735-4000

District: Cape Henlopen School District

Telephone: (302) 645-6288

Address: 19483 John J. Williams Highway, Lewes DE 19958

Web: www.capehenlopeschools.com/education/school/school.php?sectionid=30

Principal: David Frederick

AYP: Met

School Demographics

Fall Enrollment		
	2012	2013
Grade 6	195	191
Grade 7	185	193
Grade 8	140	178
Total	520	562

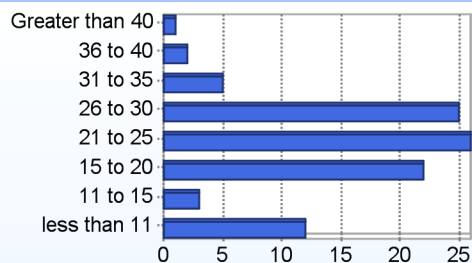
Recently Arrived ELL Students	
	2013
Number of Students Not Tested on ELA Assessment	0

Enrollment by Race/Ethnicity		
	2012	2013
African American	10.2%	9.6%
American Indian	0.4%	0.2%
Asian	2.9%	2.7%
Hispanic/Latino	8.8%	9.3%
White	73.1%	74.0%
Multi-Racial	4.6%	4.3%

School Promotion by Grade	
	2012
Grade 6	100.0%
Grade 7	100.0%
Grade 8	100.0%

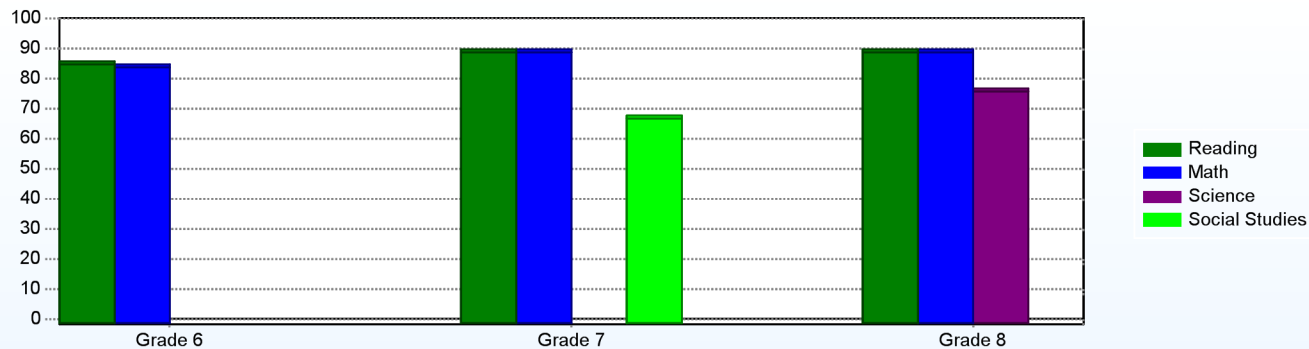
Other Student Characteristics		
	2012	2013
English Language Learner	1.7%	0.5%
Low Income	43.5%	40.0%
Special Education	18.1%	17.1%
Enrolled for Full Year	100.0%	N/A

Class Size (Percentage by Range) (2012-2013)



Student Achievement

Percentage of Students Meeting State Standards (2012-2013)



Exemplary Programs

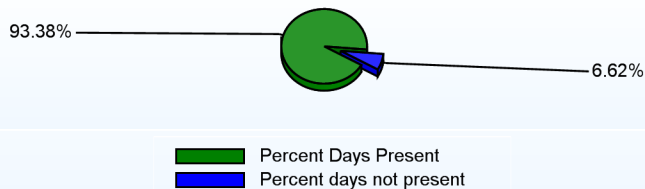
Beacon Middle School is comprised of grades six, seven, and eight. Each grade level is comprised of two teams. Because the intellectual, social, physical, and emotional needs of this age group are different from either elementary or high school students, a customized educational program is necessary. The middle school is a bridge between elementary school and high school. It is not an exaggerated elementary school nor a miniature high school, but a blend of the two. Since team teachers have the same planning period, they are able to plan for curriculum integration, interdisciplinary units, field trips and special activities for their students. Communication and support among teachers is much greater with this approach.

Student - School Safety and Discipline

Number of Reported Offenses (2012-2013)

	<u>School</u>	<u>District</u>	<u>State</u>
School Crimes (Title 14, Delaware Code, §4112)		3	579
Department of Education (DOE) Offenses	21	134	10732
All School Safety Policy in Place	Yes		

Percent Days Present (2012-2013)



Suspensions and Expulsions

	<u>2013</u>
Number of Suspensions	66
Number of Expulsions	0
Count of Students Suspended/Expelled	35
September 30 Enrollment	562
Percent of Students Suspended/Expelled	6%
District Percentage	7%
State Percentage	14%

Our Staff

Number of Instructional Staff

	<u>2013</u>
Teachers	39
Instructional Support	5
Pupil Support	3
Total	47

Staff by Race/Ethnicity

	<u>2013</u>
American Indian	0.0%
African American	6.4%
Asian American	0.0%
Hispanic	0.0%
White	93.6%

Staffing Ratios

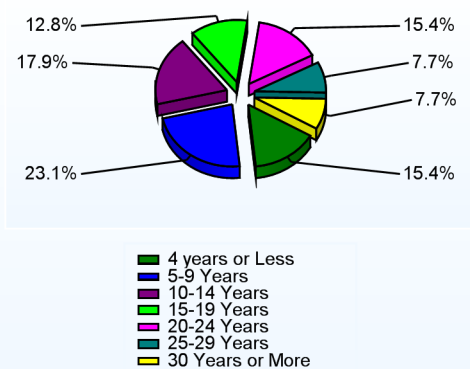
	<u>2013</u>
Students Per Teacher	14
Students Per Administrator	281
Students Per Instructional Staff	13
Students Per Pupil Support Staff	187
School Staff Per Administrator	29

Staff Qualifications

Percentage of Classes Taught by Highly Qualified Teachers (2012-2013)

	<u>Total Classes</u>	<u>% Highly Qualified</u>	<u>% Not Highly Qualified</u>
Reading/ Language Arts	29	86.2%	13.8%
Arts	42	100.0%	0.0%
Science	19	94.7%	5.3%
Mathematics	28	92.9%	7.1%
Social Studies	16	81.3%	18.8%
Elementary General	18	94.4%	5.6%

Years of Teaching Experience (2012-2013)



Education Level

	<u>2013</u>
Percent with Masters Degree and Above	72.3%
Percent Holding National Board for Professional Teaching Standards	2.6%

Curriculum Highlights

In addition to the core subject areas the following courses are offered:

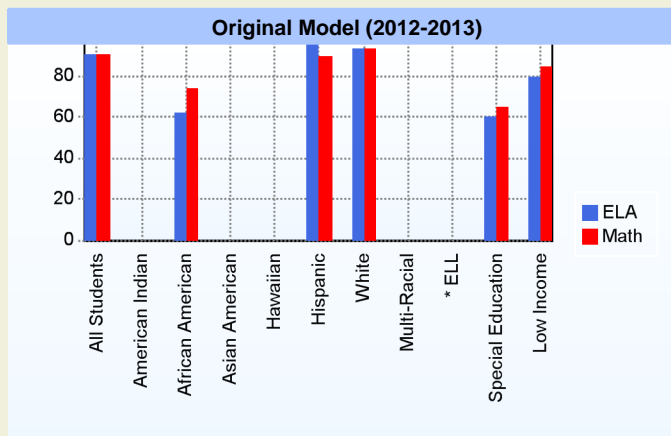
1. Accelerated coursework in Language Arts and Math at all grade levels.
2. Opportunity to participate in The Academic Challenge program in eighth grade for those who qualify.
3. Instrumental Band is offered to participating students every day all year.*
4. Chorus is offered every day all year.*
5. Technology Education-9 weeks (all students)
6. Business Education-9 weeks (all students)
7. Physical Education-9 weeks (all students)
8. Art -9 weeks
10. General Music-9 weeks
11. Reading and Research-9 weeks

* Students who participate in Band or Chorus will round out their exploratory schedules with the following courses: Physical Education, Technology Education, and Business Education.

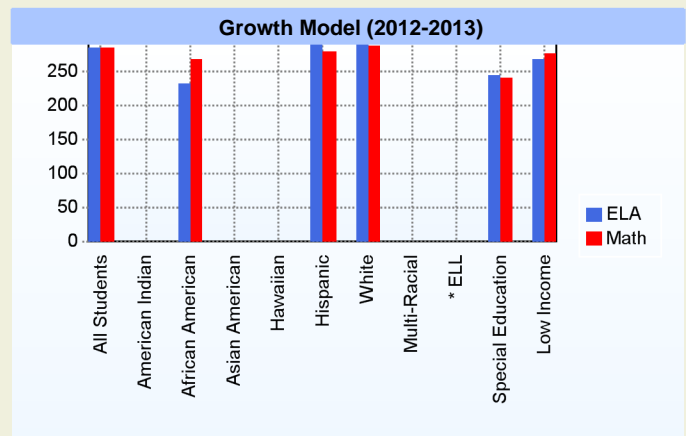
Extra Curricular: Football, Boys Soccer, Field Hockey, Intramural Volleyball (girls), Cheerleading, Boys Basketball, Girls Basketball, Wrestling, Baseball, Softball, Girls Soccer, Track and Field, Math League..

AYP

Only groups with greater than 40 students are reported



* English Language Learner



* English Language Learner

% Test Participation (2012-2013)

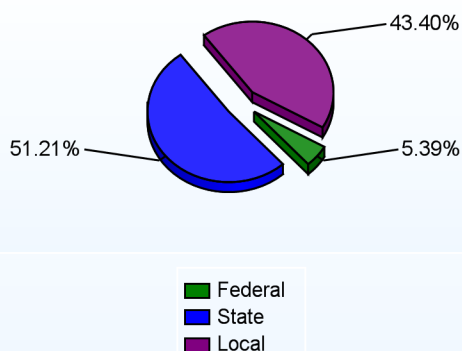
	<u>ELA</u>	<u>Math</u>	<u>ELA Goal</u>	<u>Math Goal</u>
All Students	100	100	95	95
American Indian	*	*	95	95
African American	100	98	95	95
Asian American	*	*	95	95
Hawaiian	*	*	95	95
Hispanic	100	100	95	95
White	100	100	95	95
Multi-Racial	*	*	95	95
English Language Learner	*	*	95	95
Special Education	100	100	95	95
Low Income	100	99	95	95



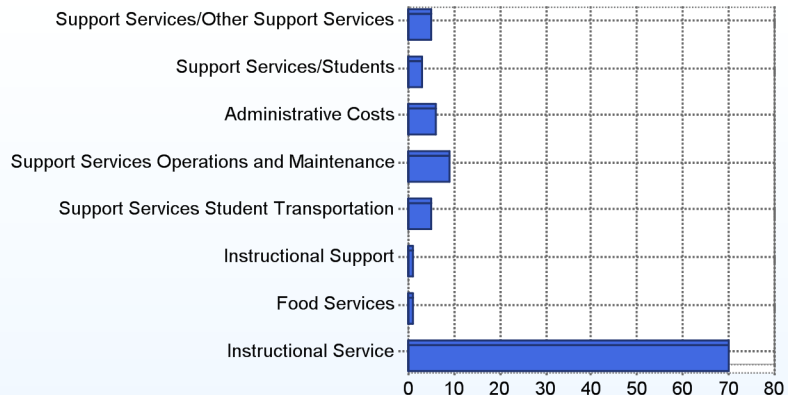
School Finances

District Expenditure per Pupil (2011-2012): \$14,463

District Sources of Revenue (2011-2012)



Percent District Allocation of Current Expenses by Category (2011-2012)



School Salary Allocation

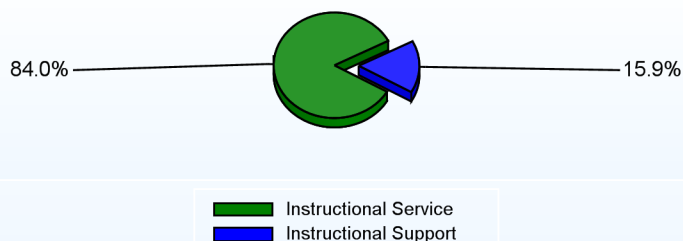
Instructional Service

	2013
Teachers	73.4%
Instructional Support	3.5%
Pupil Support	7.1%
Total	84.0%

Instructional Support

	2013
Administration	6.3%
Secretaries	2.1%
Food Services	2.5%
Maintenance	5.0%
Total	15.9%

Instructional vs. Support (2012-2013)



For further information and detailed reports, visit

<http://profiles.doe.k12.de.us>

or contact your local school district office.

Glossary: <http://profiles.doe.k12.de.us/glossary.aspx>



Delaware Department of Education

John G. Townsend Building
401 Federal Street, Suite #2
Dover, Delaware, 19901 - 3639
Phone: (302) 735-4000

District: Cape Henlopen School District
Address: 1250 Kings Highway, Lewes DE 19958
Principal: Brian Donahue
AYP: Met

Telephone: (302) 645-7711
Web: www.capehenlopenschools.com/education/school/school.php?sectionid=31

School Demographics

Fall Enrollment		
	2012	2013
Grade 9	382	318
Grade 10	364	344
Grade 11	313	355
Grade 12	243	247
Total	1302	1264

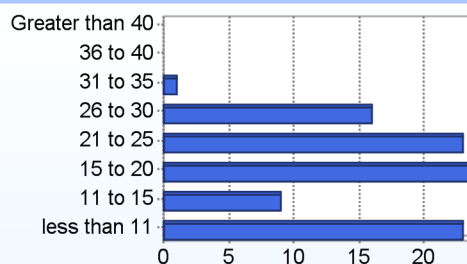
Recently Arrived ELL Students	
	2013
Number of Students Not Tested on ELA Assessment	8

Enrollment by Race/Ethnicity		
	2012	2013
African American	17.2%	16.8%
American Indian	0.7%	0.6%
Asian	2.3%	2.4%
Hawaiian	0.1%	0.1%
Hispanic/Latino	7.8%	8.9%
White	71.5%	70.6%
Multi-Racial	0.4%	0.6%

School Promotion by Grade	
	2012
Grade 9	95.0%
Grade 10	94.8%
Grade 11	92.3%
Grade 12	98.8%

Other Student Characteristics		
	2012	2013
English Language Learner	1.3%	1.6%
Low Income	42.7%	39.8%
Special Education	14.2%	15.0%
Enrolled for Full Year	100.0%	N/A

Class Size (Percentage by Range) (2012-2013)

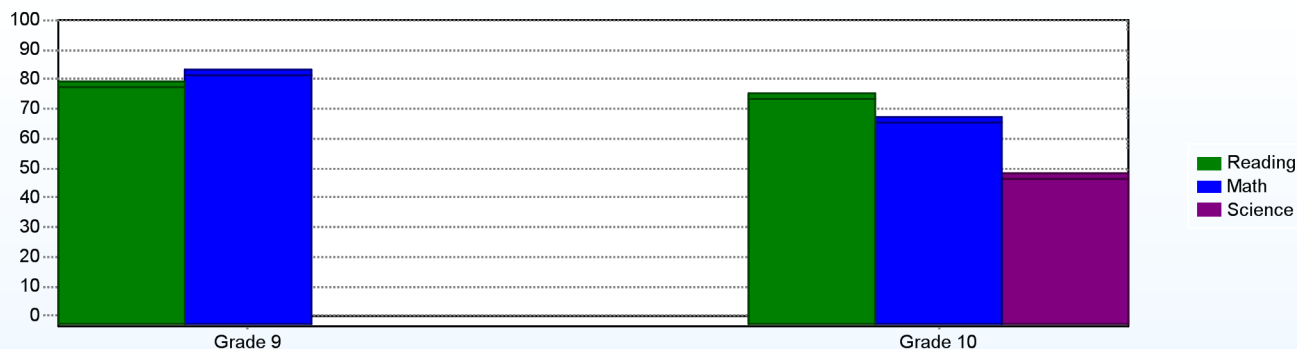


Student Achievement

Advanced Placement (AP) (2011-2012)	
	2012
Advanced Placement Courses	28
No. of Students Enrolled	204
No. of Exams Taken	259
Total No. of Exams Passed	81

Public School SAT Reasoning Test (Average Score) (2011-2012)				
	School	District	State	National
Math	453	453	447	514
Critical Reading	452	452	438	496
Writing	433	433	425	488
Total	1,338	1,338	1,310	1,498

Percentage of Students Meeting State Standards (2012-2013)



Exemplary Programs

Through a vibrant partnership with Del Tech and Beebe Hospital, students are able to earn a Certified Nursing Assistant certificate. This program includes rigorous and relevant internship opportunities.

JROTC students are extremely active in service to the school and the community. This leadership program is instrumental to the success of the school as a whole. The JROTC program received the Governor's highest volunteer award this past school year for their work in the Cape community.

Many Cape students have received local, state, and national recognition while participating in our theater and performing arts program. These programs provide students with a clear four year academy experience. Our band and choral students are recognized for excellence annually.

Cape Henlopen High School enjoys an outstanding athletic program to support student academic goals and interests.

Student - School Safety and Discipline

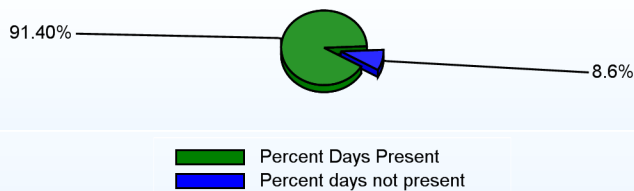
Number of Reported Offenses (2012-2013)

	<u>School</u>	<u>District</u>	<u>State</u>
School Crimes (Title 14, Delaware Code, §4112)	3	3	579
Department of Education (DOE) Offenses	38	134	10732
All School Safety Policy in Place	Yes		

Suspensions and Expulsions

	<u>2013</u>
Number of Suspensions	319
Number of Expulsions	0
Count of Students Suspended/Expelled	189
September 30 Enrollment	1264
Percent of Students Suspended/Expelled	15%
District Percentage	7%
State Percentage	14%

Percent Days Present (2012-2013)



Our Staff

Number of Instructional Staff

	<u>2013</u>
Teachers	85
Librarians	1
Instructional Support	19
Pupil Support	11
Total	116

Staff by Race/Ethnicity

	<u>2013</u>
American Indian	0.0%
African American	14.7%
Asian American	0.9%
Hispanic	0.9%
White	83.6%

Staffing Ratios

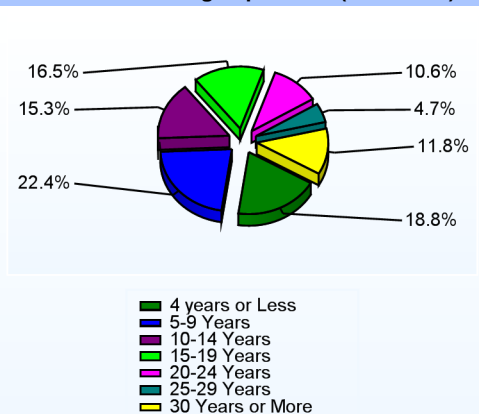
	<u>2013</u>
Students Per Teacher	15
Students Per Administrator	316
Students Per Instructional Staff	12
Students Per Pupil Support Staff	115
School Staff Per Administrator	39

Staff Qualifications

Percentage of Classes Taught by Highly Qualified Teachers (2012-2013)

	<u>Total Classes</u>	<u>% Highly Qualified</u>	<u>% Not Highly Qualified</u>
English	63	96.8%	3.2%
Reading/ Language Arts	5	100.0%	0.0%
Arts	36	100.0%	0.0%
Foreign Languages	43	100.0%	0.0%
Science	47	85.1%	14.9%
Mathematics	63	96.8%	3.2%
Geography	14	100.0%	0.0%
Civics & Government	50	100.0%	0.0%
Social Studies	3	66.7%	33.3%
History	14	92.9%	7.1%

Years of Teaching Experience (2012-2013)



Education Level

	<u>2013</u>
Percent with Masters Degree and Above	58.6%
Percent Holding National Board for Professional Teaching Standards	2.2%

Curriculum Highlights

The Honors Program serves the needs of academically-talented students by providing academic opportunities that rival college-level courses. Honors, AP courses, and the University of Delaware's English 110 course are offered.

While Cape Henlopen High School offers a variety of Career Pathways, the school is developing academies in areas which include the following:

Health Care and Human Services including the Certified Nursing Assistant Academy
 Leadership and JROTC
 Theater and Performing Arts
 Business, Finance and Technology
 Hospitality and Tourism
 World Languages

Staff development includes Learning Focused Strategy training and summer workshop initiatives which concentrate on curriculum alignment in core subject areas.

A variety of extra-curricular activities are available to students designed to support our academic mission, service opportunities, and student interests.

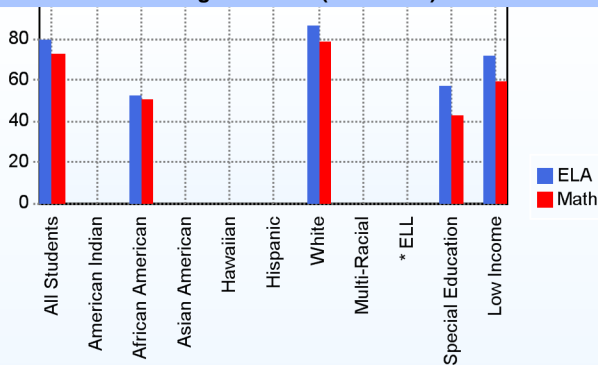
Graduation Rate - ESEA 4 Year Adjusted

	2011	2012
	<u>ESEA</u>	<u>ESEA</u>
All Students	79.1%	80.5%
American Indian	66.7%	100.0%
African American	73.0%	69.5%
Asian American	83.3%	100.0%
Hispanic	68.8%	64.0%
White	82.0%	84.1%
English Language Learner	77.8%	53.8%
Special Education	67.3%	68.4%
Low Income	69.6%	72.6%

AYP

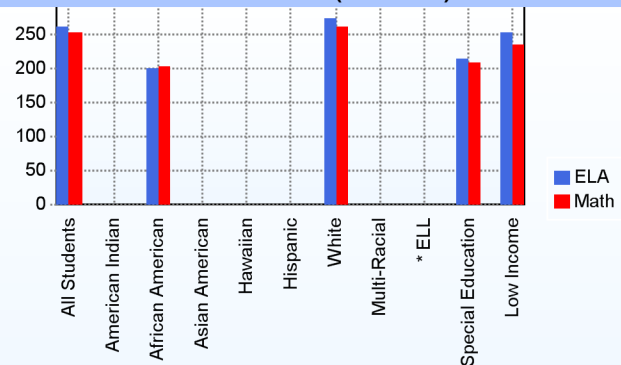
Only groups with greater than 40 students are reported

Original Model (2012-2013)



* English Language Learner

Growth Model (2012-2013)



* English Language Learner

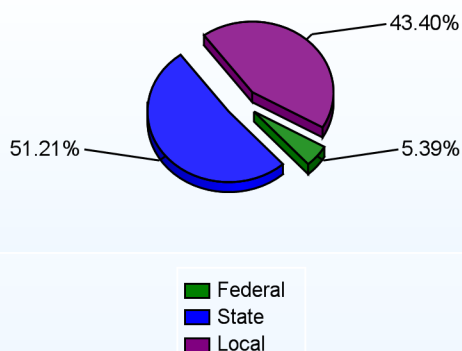
% Test Participation (2012-2013)

	<u>ELA</u>	<u>Math</u>	<u>ELA Goal</u>	<u>Math Goal</u>
All Students	99	100	95	95
American Indian	*	*	95	95
African American	100	100	95	95
Asian American	*	*	95	95
Hawaiian	*	*	95	95
Hispanic	*	*	95	95
White	99	100	95	95
Multi-Racial	*	*	95	95
English Language Learner	*	*	95	95
Special Education	100	100	95	95
Low Income	99	99	95	95

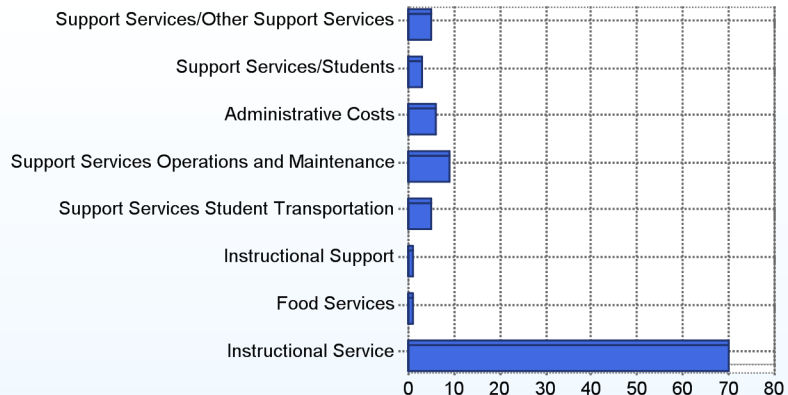
School Finances

District Expenditure per Pupil (2011-2012): \$14,463

District Sources of Revenue (2011-2012)



Percent District Allocation of Current Expenses by Category (2011-2012)



School Salary Allocation

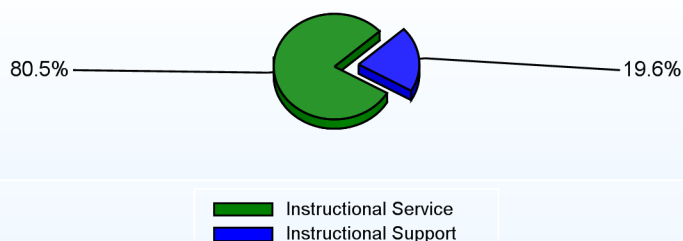
Instructional Service

	2013
Teachers	64.0%
Librarians	0.7%
Instructional Support	7.2%
Pupil Support	8.6%
Total	80.5%

Instructional Support

	2013
Administration	5.0%
Secretaries	2.3%
Food Services	2.3%
Maintenance	7.7%
Not Classified	2.3%
Total	19.6%

Instructional vs. Support (2012-2013)



For further information and detailed reports, visit

<http://profiles.doe.k12.de.us>

or contact your local school district office.

Glossary: <http://profiles.doe.k12.de.us/glossary.aspx>



Delaware Department of Education

John G. Townsend Building
401 Federal Street, Suite #2
Dover, Delaware, 19901 - 3639
Phone: (302) 735-4000

District: Cape Henlopen School District
Address: 520 duPont Avenue, Lewes DE 19958
Principal: Vivian Bush
AYP: Not Met

Telephone: (302) 645-7210
Web: cape.de.schoolwebpages.com/education/school/school.php?sectiondetailid=8363

School Demographics

Fall Enrollment		
	2012	2013
Pre-Kindergarten	50	68
Kindergarten	13	9
Grade 1	9	11
Grade 2	15	9
Grade 3	14	17
Grade 4	19	15
Grade 5	18	20
Grade 6	11	19
Grade 7	14	10
Grade 8	11	15
Grade 9	17	8
Grade 10	15	16
Grade 11	15	15
Grade 12	33	37
Total	254	269

Recently Arrived ELL Students	
	2013
Number of Students Not Tested on ELA Assessment	0

Enrollment by Race/Ethnicity		
	2012	2013
African American	16.9%	17.1%
American Indian	0.4%	0.4%
Asian	0.8%	0.7%
Hispanic/Latino	4.7%	6.3%
White	76.4%	74.7%
Multi-Racial	0.8%	0.7%

School Promotion by Grade	
	2012
Pre-Kindergarten	52.0%
Kindergarten	100.0%
Grade 1	100.0%
Grade 2	100.0%
Grade 3	100.0%
Grade 4	100.0%
Grade 5	100.0%
Grade 6	100.0%
Grade 7	100.0%
Grade 8	100.0%
Grade 9	100.0%
Grade 10	100.0%
Grade 11	100.0%
Grade 12	33.3%

Other Student Characteristics		
	2012	2013
English Language Learner	0.0%	0.0%
Low Income	56.4%	55.7%
Special Education	100.0%	100.0%
Enrolled for Full Year	100.0%	N/A



Exemplary Programs

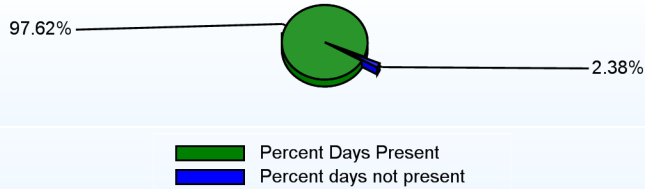
The Sussex Consortium is a comprehensive program, Pre-K through age 21, with a foundation in Applied Behavioral Analysis (ABA). Through specific methodology, the Sussex Consortium offers individualized instruction, preparing students for successful transitions toward a meaningful adult life. Schools from as far away as Japan and Australia have visited our program to see the model implemented.

Student - School Safety and Discipline

Number of Reported Offenses (2012-2013)

	<u>School</u>	<u>District</u>	<u>State</u>
School Crimes (Title 14, Delaware Code, §4112)		3	579
Department of Education (DOE) Offenses	4	134	10732
All School Safety Policy in Place	Yes		

Percent Days Present (2012-2013)



Suspensions and Expulsions

	<u>2013</u>
Number of Suspensions	5
Number of Expulsions	0
Count of Students Suspended/Expelled	5
September 30 Enrollment	269
Percent of Students Suspended/Expelled	2%
District Percentage	7%
State Percentage	14%

Our Staff

Number of Instructional Staff

	<u>2013</u>
Teachers	52
Instructional Support	80
Pupil Support	26
Total	158

Staff by Race/Ethnicity

	<u>2013</u>
American Indian	0.0%
African American	8.9%
Asian American	0.0%
Hispanic	1.3%
White	89.9%

Staffing Ratios

	<u>2013</u>
Students Per Teacher	5
Students Per Administrator	90
Students Per Instructional Staff	2
Students Per Pupil Support Staff	10
School Staff Per Administrator	64

Staff Qualifications

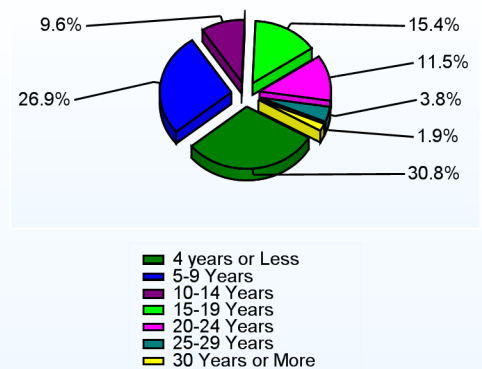
Percentage of Classes Taught by Highly Qualified Teachers (2012-2013)

	<u>Total Classes</u>	<u>% Highly Qualified</u>	<u>% Not Highly Qualified</u>
Elementary General	12	83.3%	16.7%

Education Level

	<u>2013</u>
Percent with Masters Degree and Above	34.8%
Percent Holding National Board for Professional Teaching Standards	0.0%

Years of Teaching Experience (2012-2013)



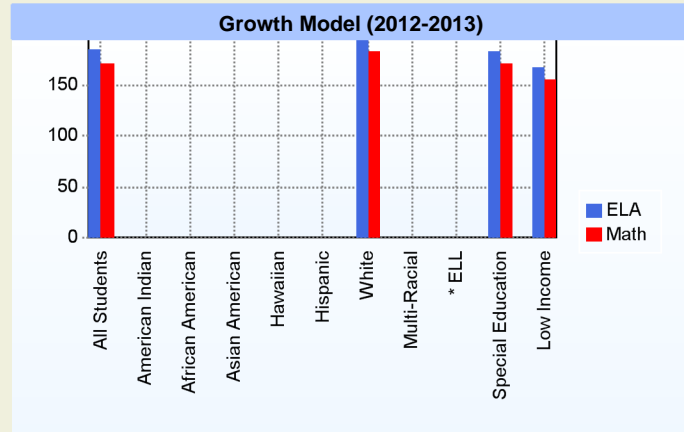
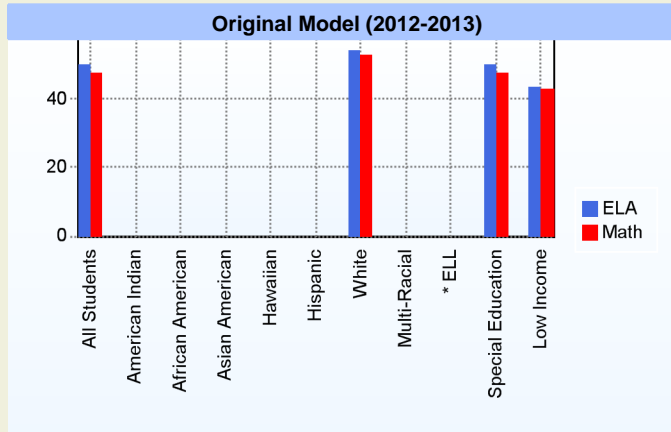
Curriculum Highlights

The Sussex Consortium has earned a variety of state and national accolades:

- In July of 2002, the Sussex Consortium was awarded the Wendy F. Miller Autism Society of America National Recognition Award as "Autism Program of the Year" at the ASA Conference in Indianapolis.
- In 2005 and 2010 the program was recognized by the Delaware Department of Education (DDOE) as a Commendable School. This is awarded to Delaware schools based on state and federal No Child Left Behind (NCLB) accountability data provided by annual assessments.
- From 2006 through 2009 and 2011, the Sussex Consortium received the state's highest accountability rating with a Superior by DDOE under the NCLB criteria.

AYP

Only groups with greater than 40 students are reported



* English Language Learner

* English Language Learner

% Test Participation (2012-2013)

	<u>ELA</u>	<u>Math</u>	<u>ELA Goal</u>	<u>Math Goal</u>
All Students	98	100	95	95
American Indian	*	*	95	95
African American	*	*	95	95
Asian American	*	*	95	95
Hawaiian	*	*	95	95
Hispanic	*	*	95	95
White	98	100	95	95
Multi-Racial	*	*	95	95
English Language Learner	*	*	95	95
Special Education	98	100	95	95
Low Income	98	100	95	95



Other

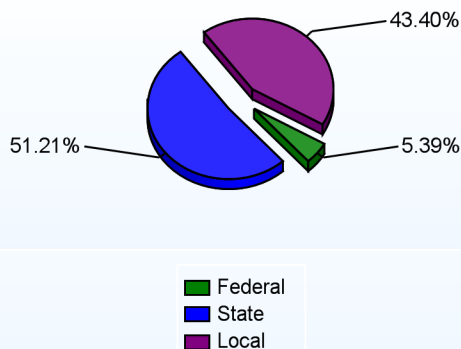
The Sussex Consortium has developed cooperative agreements with other Sussex County school districts and the rest of the Cape Henlopen schools for valuable mainstreaming purposes. The program also receives strong community support through a variety of area businesses and organizations. These partnerships assist us in providing opportunities in the classroom as well as offering community and vocational opportunities for our student body. A variety of vocational sites are available for students on and off student grounds. These opportunities are developed through the IEP process. Approximately 90 of our students work in over 30 different sites throughout the community in paid and volunteer positions.

At the beginning of the 2010-11 school year, the Sussex Consortium expanded its program in the Lewes School. Over 100 students are served at the building.

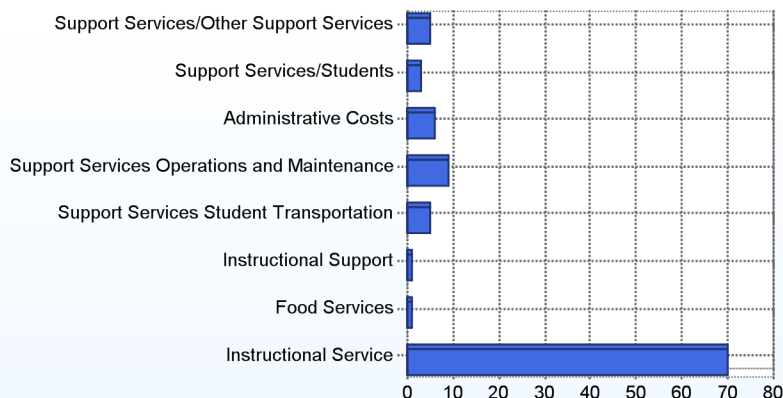
School Finances

District Expenditure per Pupil (2011-2012): \$14,463

District Sources of Revenue (2011-2012)



Percent District Allocation of Current Expenses by Category (2011-2012)



School Salary Allocation

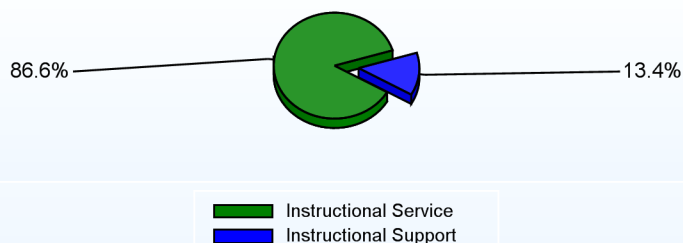
Instructional Service

	2013
Teachers	38.6%
Instructional Support	28.7%
Pupil Support	19.3%
Total	86.6%

Instructional Support

	2013
Administration	4.5%
Secretaries	7.9%
Maintenance	1.0%
Total	13.4%

Instructional vs. Support (2012-2013)



For further information and detailed reports, visit

<http://profiles.doe.k12.de.us>

or contact your local school district office.

Glossary: <http://profiles.doe.k12.de.us/glossary.aspx>



Delaware Department of Education

John G. Townsend Building
401 Federal Street, Suite #2
Dover, Delaware, 19901 - 3639
Phone: (302) 735-4000