



District: Cape Henlopen School District
Address: 1270 Kings Highway, Lewes DE 19958
School District Superintendent: Robert Fulton

Telephone: (302) 645-6686
Web: www.capehenlopenschools.com

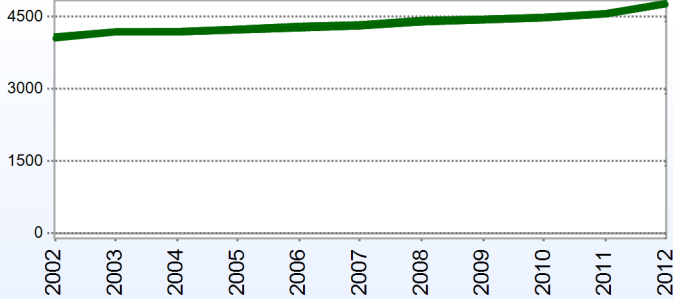
School Board Members

Andrew Lewis, President
Jennifer Burton
Dr. Roni Posner
Dr. Sara Wilkinson,

Sgt. Spencer Brittingham, Vice President
Sandi Minard
Noble Prettyman
Robert Fulton, Executive Secretary

District Information

Enrollment History



Students Who Reside in the District

	2012
Number of Students in Public Schools (Non Charter)	4,845
Percent of Students in Public Schools (Non Charter)	100%

Fall Enrollment

	2011	2012
Pre-Kindergarten	60	50
Kindergarten	381	410
Grade 1	387	408
Grade 2	377	409
Grade 3	344	406
Grade 4	385	360
Grade 5	373	399
Grade 6	351	379
Grade 7	280	350
Grade 8	357	292
Grade 9	385	399
Grade 10	376	379
Grade 11	328	328
Grade 12	250	276
Total	4,634	4,845

Enrollment by Race/Ethnicity

	2009	2010
American Indian	0.8%	0.9%
African American	19.6%	19.3%
Asian American	1.9%	1.9%
Hispanic	8.5%	9.1%
White	69.2%	68.8%

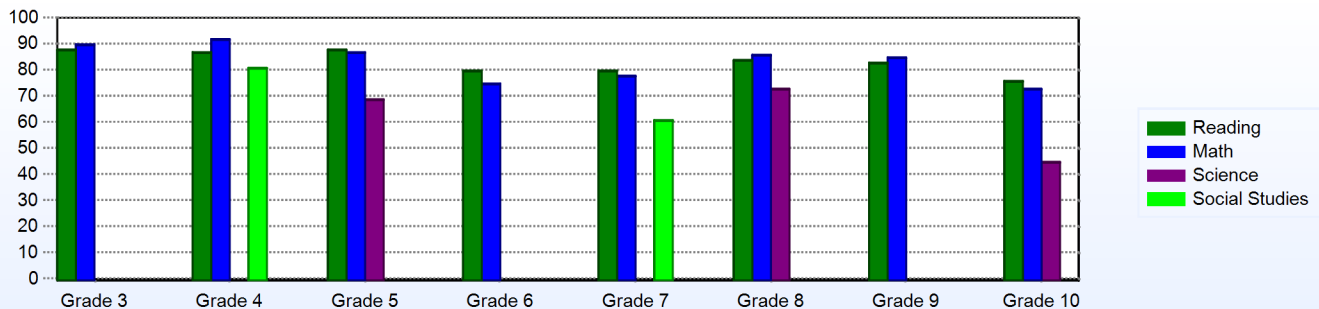
Advanced Placement (AP)

	2011
Advanced Placement Courses	22
No. of Students Enrolled	150
No. of Exams Taken	80
Total No. of Exams Passed	31

Other Student Characteristics

	2011	2012
English Language Learner	4.3%	3.9%
Low Income	45.8%	49.0%
Special Education	17.2%	16.0%
Enrolled for Full Year	91.0%	N/A%

Percentage of Students Meeting State Standards



District Staff

Number of Staff

	2012
Teachers	348
Librarians	1
Instructional Support	154
Pupil Support	59
Administrators	24
Secretaries	65
Food Service	46
Maintenance	60
Not Classified	15
Total	771

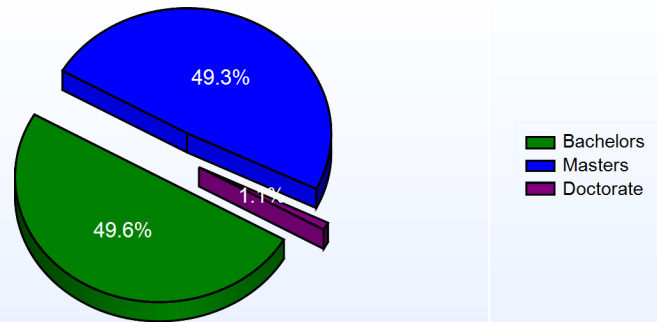
Percentage of Classes Taught by Highly Qualified Teachers

	Total Classes	% Highly Qualified
English	123	97.6%
Reading/ Language Arts	74	85.1%
Arts	163	100.0%
Foreign Languages	84	100.0%
Science	136	88.2%
Mathematics	181	95.6%
Geography	4	100.0%
Civics & Government	16	87.5%
Economics	15	93.3%
Social Studies	45	77.8%
History	58	100.0%
Elementary General	161	98.8%

School Choice

	2013
Number of Schools with Choice Students:	7
Number of Local Choice Students: (choice students from the same district)	164
Number of State Choice Students: (choice students from another district)	206
Number of Federal Choice Students: (NCLB School Under Improvement)	0
Number of Federal Choice Students: (NCLB Unsafe School)	0
Number of Federal Choice Students: (NCLB Victim of a Violent Felony)	0

Education Level



Graduation Rate - ESEA 4 Year Adjusted

	2010	2011
	ESEA	ESEA
All Students	76.3%	75.5%
American Indian	33.3%	66.7%
African American	67.1%	71.1%
Asian American	60.0%	83.3%
Hispanic	85.7%	68.8%
White	79.4%	77.4%
English Language Learner	80.0%	77.8%
Special Education	62.0%	51.6%
Low Income	70.5%	65.8%

Year End Position

	Year-End Balance	Expenditures	Percentage
2007		\$61,348,624.00	
2008	\$5,308,651.00	\$63,285,807.00	8.4%
2009	\$5,276,338.00	\$67,957,345.00	7.8%
2010	\$5,294,801.00	\$72,556,936.00	7.3%
2011	\$8,237,330.00	\$73,910,571.00	11.1%

Persistently Dangerous School

The school district has no "Persistently Dangerous Schools"

District Information

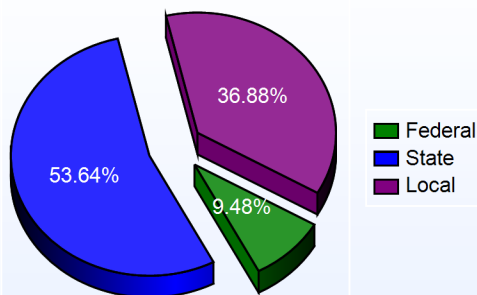
District DropOut Information						
	<u>2009</u>		<u>2010</u>		<u>2011</u>	
	<u>Count</u>	<u>Percent</u>	<u>Count</u>	<u>Percent</u>	<u>Count</u>	<u>Percent</u>
District	43	3.3%	52	3.9%	64	4.8%

Delaware Accountability		
<u>School Category</u>	<u>School</u>	<u>AYP</u>
Elementary	H. O. Brittingham Elementary School	Met
	Milton Elementary School	Met
	Rehoboth Elementary School	Met
	Shields (Richard A.) Elementary School	Met
Middle	Beacon Middle School	Met
	Mariner Middle School	Met
High School	Cape Henlopen High School	Met
Other	Sussex Consortium	Not Met

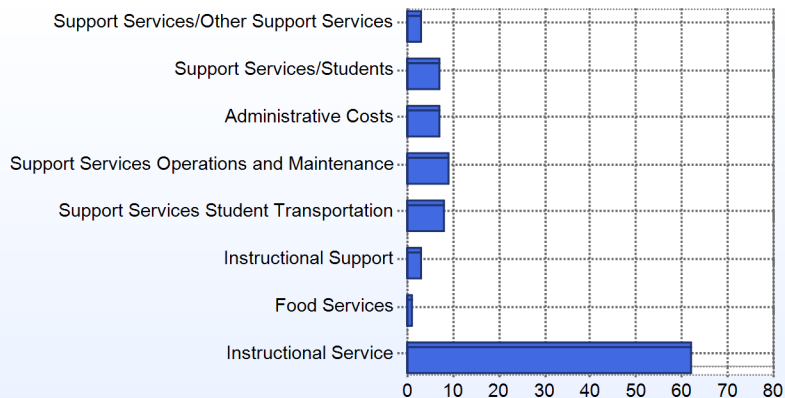
School Finances

District Expenditure per Pupil: \$16,064

District Sources of Revenue



Percent District Allocation of Current Expenses by Category



District Salary Allocation

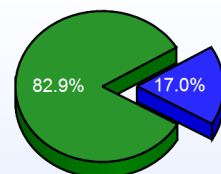
Instructional Service

	2012
Teachers	62.6%
Librarians	0.3%
Instructional Support	11.0%
Pupil Support	9.0%
Total	82.9%

Instructional Support

	2012
Administration	5.7%
Secretaries	3.5%
Food Services	2.3%
Maintenance	5.0%
Not Classified	0.5%
Total	17.0%

Instructional Vs Support



■ Instructional Service
■ Instructional Support

Scheduled Teacher Salaries

	Bachelor		Master		Doctorate	
	4 years or Less	15-19 Years	4 years or Less	15-19 Years	30 Years or More	15-19 Years
Scheduled Teacher Salaries	\$40,007	\$50,330	\$46,066	\$70,821	\$71,755	\$80,166

For further information and detailed reports, visit

<http://profiles.doe.k12.de.us>

or contact your local district office.



Delaware Department of Education

John G. Townsend Building
 401 Federal Street, Suite #2
 Dove, Delaware, 19901 - 3639
 Phone: (302) 735-4000

District: Cape Henlopen School District
Address: 400 Mulberry Street, Milton DE 19968
Principal: Cristy Greaves
AYP: Met

Telephone: (302) 684-8522
Web: www.capehenlopeschools.com/education/school/school.php?sectionid=32

School Demographics

Fall Enrollment		
	2011	2012
Kindergarten	89	90
Grade 1	79	91
Grade 2	87	88
Grade 3	66	94
Grade 4	77	71
Grade 5	83	87
Total	481	521

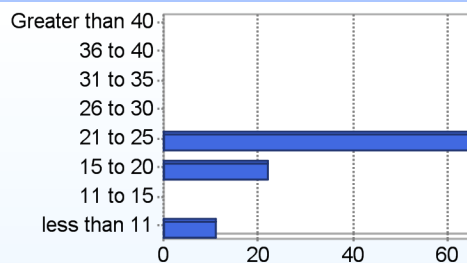
Recently Arrived ELL Students		
	2011	2012
Number of Students Not Tested on ELA Assessment		0

Enrollment by Race/Ethnicity		
	2011	2012
African American	26.8%	26.5%
American Indian	0.4%	0.2%
Asian	0.4%	1.0%
Hispanic/Latino	29.1%	29.0%
White	42.2%	39.7%
Multi-Racial	1.0%	3.6%

School Promotion by Grade		2011
Kindergarten		96.6%
Grade 1		96.2%
Grade 2		94.3%
Grade 3		98.5%
Grade 4		100.0%
Grade 5		98.8%

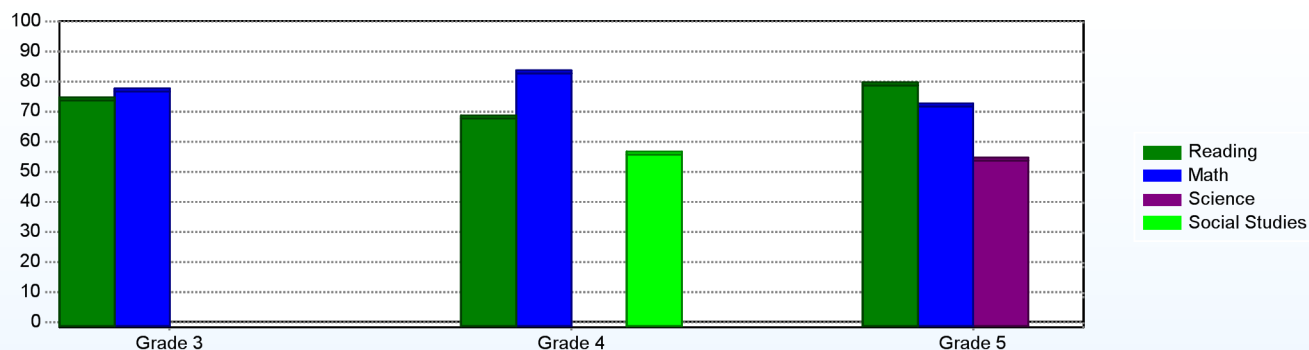
Other Student Characteristics		
	2011	2012
English Language Learner	16.6%	15.0%
Low Income	74.6%	77.4%
Special Education	9.4%	10.9%
Enrolled for Full Year	95.0%	N/A

Class Size (Percentage by Range) (2011-2012)



Student Achievement

Percentage of Students Meeting State Standards (2011-2012)



Exemplary Programs

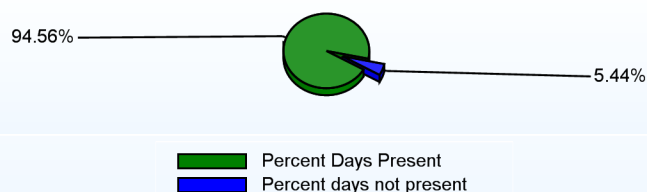
H.O. Brittingham offers many exciting opportunities for our students throughout the school year, among them are Math Olympiad, HOSTS, Read Aloud Delaware, Mini Society, Challenge 24, What in the World, Flight, 4th/5th Grade Chorus, and 5th Grade Instrumental Band. As a Title I school, we combine a variety of resources to enhance teaching and learning. We use our entire professional and para professional staff to provide students with additional instructional support throughout the day. Our Teacher/ Parent/ Student Compact ensures that everyone understands their role in helping students learn at home, endorsing teachers' high expectations, and helping to make the school a safe and caring place. We have a 21st Century Community Learning Center Grant partnering with Clear Space Productions to enhance our students' language skills through creative dramatics, song, dance, Odyssey Language Arts, Readers' theater, and Writing. The program runs two days a week afterschool during the school year.

Student - School Safety and Discipline

Number of Reported Offenses (2011-2012)

	<u>School</u>	<u>District</u>	<u>State</u>
School Crimes (Title 14, Delaware Code, §4112)	2	29	957
Department of Education (DOE) Offenses	7	187	10291
All School Safety Policy in Place	Yes		

Percent Days Present (2011-2012)



Suspensions and Expulsions

	<u>2012</u>
Number of Suspensions	85
Number of Expulsions	0
Count of Students Suspended/Expelled	45
September 30 Enrollment	521
Percent of Students Suspended/Expelled	9%
District Percentage	10%
State Percentage	15%

Our Staff

Number of Instructional Staff

	<u>2012</u>
Teachers	37
Pupil Support	4
Total	41

Staff by Race/Ethnicity

	<u>2012</u>
American Indian	0.0%
African American	7.0%
Asian American	0.0%
Hispanic	2.3%
White	90.7%

Staffing Ratios

	<u>2012</u>
Students Per Teacher	14
Students Per Administrator	174
Students Per Instructional Staff	11
Students Per Pupil Support Staff	130
School Staff Per Administrator	21

Staff Qualifications

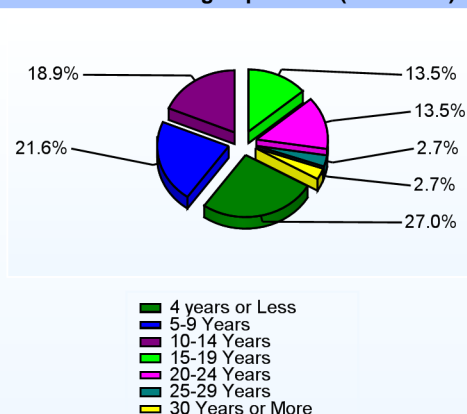
Percentage of Classes Taught by Highly Qualified Teachers (2011-2012)

	<u>Total Classes</u>	<u>% Highly Qualified</u>	<u>% Not Highly Qualified</u>
Reading/ Language Arts	1	100.0%	0.0%
Arts	2	100.0%	0.0%
Mathematics	1	100.0%	0.0%
Elementary General	27	100.0%	0.0%

Education Level

	<u>2012</u>
Percent with Masters Degree and Above	43.4%
Percent Holding National Board for Professional Teaching Standards	0.0%

Years of Teaching Experience (2011-2012)

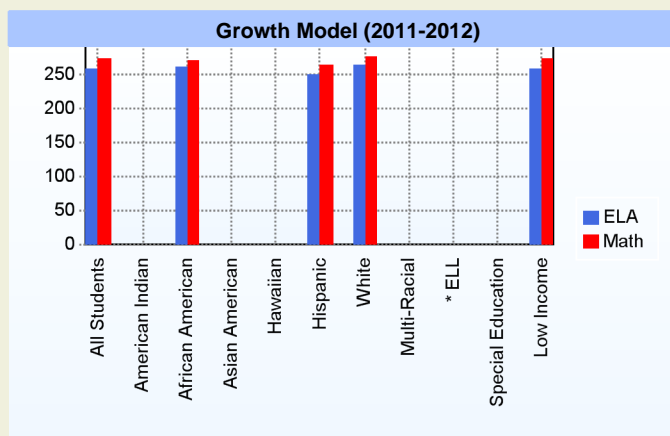
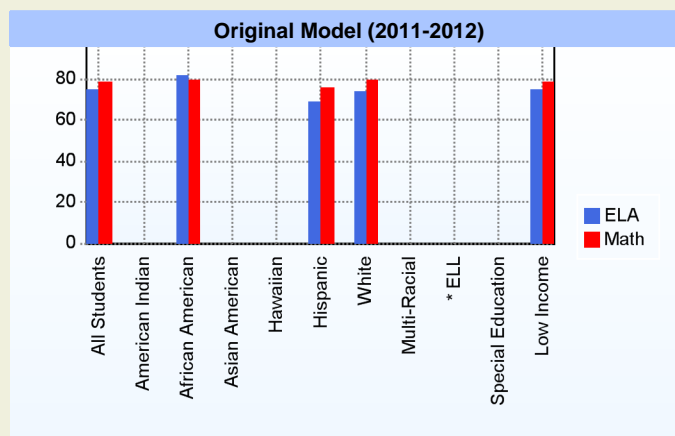


Curriculum Highlights

Every effort is made by teachers and staff to maintain high academic achievement of students. Special emphasis is given to reading, writing, and math skills. DCAS test scores show significant gains in all grades. Students have the support of an on-site Reading Specialist and Math Specialist who work with students and staff members to ensure the success of all. We continue to provide individualized instruction in reading through our HOSTS program utilizing the tremendous support of our community mentors. Students in grade 2-5 have 24/7 access to the online Odyssey Language Arts and Math programs.

AYP

Only groups with greater than 40 students are reported



* English Language Learner

* English Language Learner

% Test Participation (2011-2012)

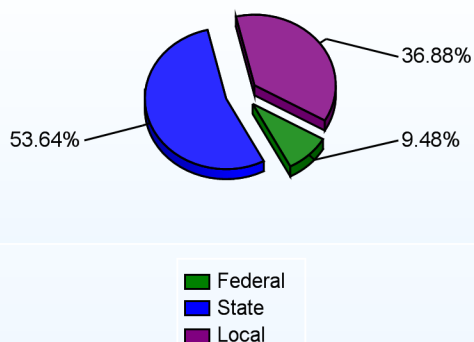
	<u>ELA</u>	<u>Math</u>	<u>ELA Goal</u>	<u>Math Goal</u>
All Students	100	100	95	95
American Indian	*	*	95	95
African American	100	100	95	95
Asian American	*	*	95	95
Hawaiian	*	*	95	95
Hispanic	100	100	95	95
White	100	100	95	95
Multi-Racial	*	*	95	95
English Language Learner	*	*	95	95
Special Education	*	*	95	95
Low Income	100	100	95	95



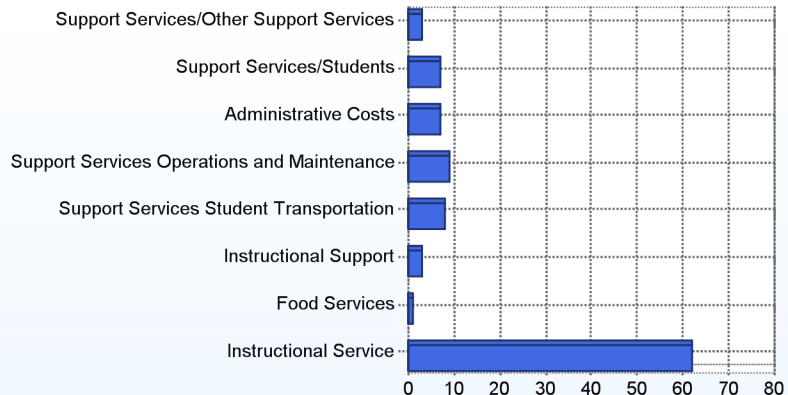
School Finances

District Expenditure per Pupil (2010-2011): \$16,064

District Sources of Revenue (2010-2011)



Percent District Allocation of Current Expenses by Category (2010-2011)



School Salary Allocation

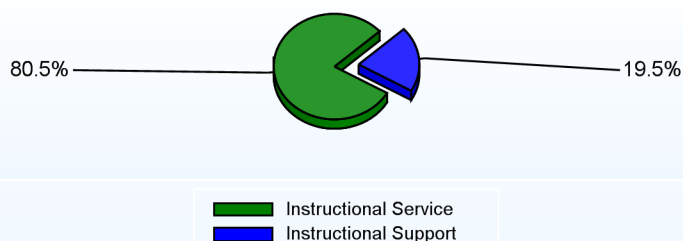
Instructional Service

	2012
Teachers	68.3%
Instructional Support	7.9%
Pupil Support	4.3%
Total	80.5%

Instructional Support

	2012
Administration	8.3%
Secretaries	2.2%
Food Services	3.5%
Maintenance	5.5%
Total	19.5%

Instructional vs. Support (2011-2012)



For further information and detailed reports, visit

<http://profiles.doe.k12.de.us>

or contact your local school district office.

Glossary: <http://profiles.doe.k12.de.us/glossary.aspx>



Delaware Department of Education

John G. Townsend Building
401 Federal Street, Suite #2
Dover, Delaware, 19901 - 3639
Phone: (302) 735-4000

District: Cape Henlopen School District
Address: 910 Shields Avenue, Lewes DE 19958
Principal: Jennifer Nauman
AYP: Met

Telephone: (302) 645-7748
Web: www.capehenlopenschools.com/education/school/school.php?sectionid=36

School Demographics

Fall Enrollment		
	2011	2012
Kindergarten	90	123
Grade 1	104	101
Grade 2	91	105
Grade 3	97	109
Grade 4	87	104
Grade 5	101	93
Total	570	635

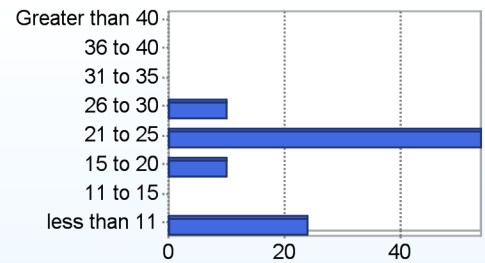
Enrollment by Race/Ethnicity		
	2011	2012
African American	12.1%	10.9%
American Indian	1.1%	0.8%
Asian	2.3%	2.8%
Hawaiian	0.2%	0.2%
Hispanic/Latino	7.5%	8.7%
White	74.6%	71.5%
Multi-Racial	2.3%	5.2%

Other Student Characteristics		
	2011	2012
English Language Learner	2.8%	2.8%
Low Income	38.8%	40.5%
Special Education	9.1%	7.4%
Enrolled for Full Year	98.1%	N/A

Recently Arrived ELL Students	
	2012
Number of Students Not Tested on ELA Assessment	1

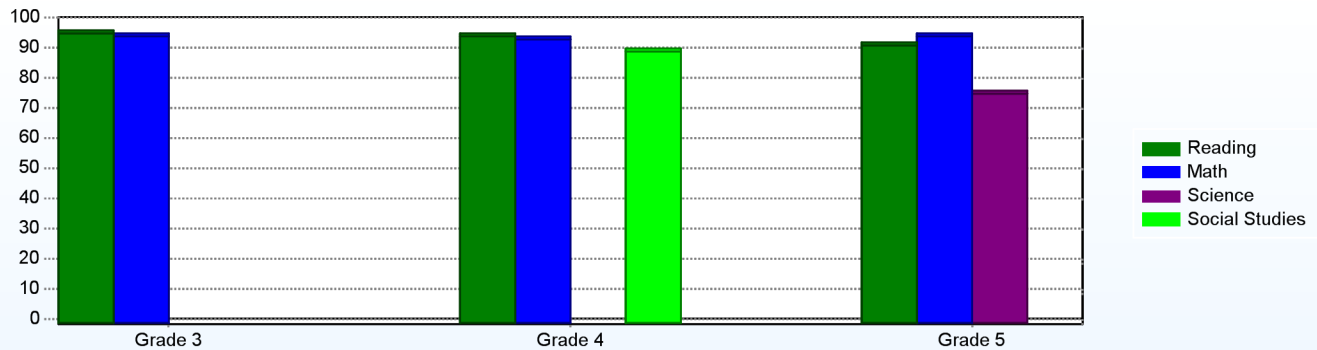
School Promotion by Grade	
	2011
Kindergarten	100.0%
Grade 1	100.0%
Grade 2	98.9%
Grade 3	100.0%
Grade 4	98.9%
Grade 5	100.0%

Class Size (Percentage by Range) (2011-2012)



Student Achievement

Percentage of Students Meeting State Standards (2011-2012)



Exemplary Programs

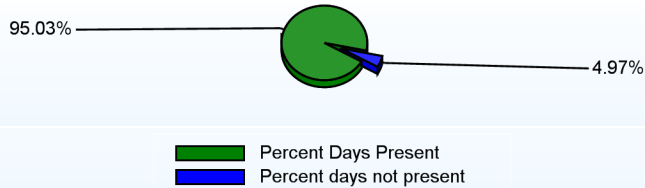
The Shields Elementary School staff continues to implement exemplary programs which meet students' needs in a variety of areas resulting in a well-rounded curriculum. In addition to outstanding instruction in the core subject areas, efforts are made to address positive reinforcement through PBS (Positive Behavior Supports), academic enrichment, technology in the classroom, grouping configurations, and integration of regular and special needs students. HOSTS reading program uses community volunteers to support reading instruction. Parent volunteers are welcomed and are present in the classrooms. Furthermore, our school unites parents and teachers to challenge our students with Odyssey of the Mind. This is an international educational program where team members apply their creativity to solve problems that require them to work collaboratively in a group. In order to further challenge our highly abled learners, students are exposed to Science Technology Engineering and Math (STEM) kits.

Student - School Safety and Discipline

Number of Reported Offenses (2011-2012)

	<u>School</u>	<u>District</u>	<u>State</u>
School Crimes (Title 14, Delaware Code, §4112)		29	957
Department of Education (DOE) Offenses	1	187	10291
All School Safety Policy in Place	Yes		

Percent Days Present (2011-2012)



Suspensions and Expulsions

	<u>2012</u>
Number of Suspensions	19
Number of Expulsions	0
Count of Students Suspended/Expelled	16
September 30 Enrollment	635
Percent of Students Suspended/Expelled	3%
District Percentage	10%
State Percentage	15%

Our Staff

Number of Instructional Staff

	<u>2012</u>
Teachers	35
Pupil Support	8
Total	43

Staff by Race/Ethnicity

	<u>2012</u>
American Indian	0.0%
African American	4.4%
Asian American	0.0%
Hispanic	0.0%
White	95.6%

Staffing Ratios

	<u>2012</u>
Students Per Teacher	18
Students Per Administrator	318
Students Per Instructional Staff	14
Students Per Pupil Support Staff	79
School Staff Per Administrator	34

Staff Qualifications

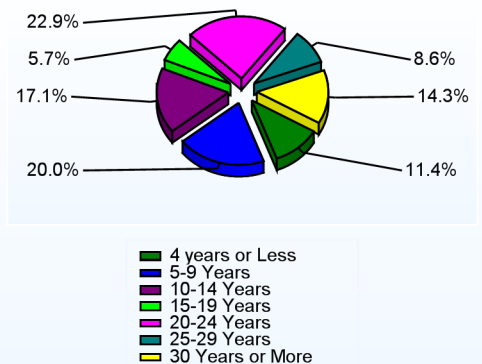
Percentage of Classes Taught by Highly Qualified Teachers (2011-2012)

	<u>Total Classes</u>	<u>% Highly Qualified</u>	<u>% Not Highly Qualified</u>
Reading/ Language Arts	1	100.0%	0.0%
Arts	2	100.0%	0.0%
Elementary General	33	97.0%	3.0%

Education Level

	<u>2012</u>
Percent with Masters Degree and Above	53.6%
Percent Holding National Board for Professional Teaching Standards	10.0%

Years of Teaching Experience (2011-2012)

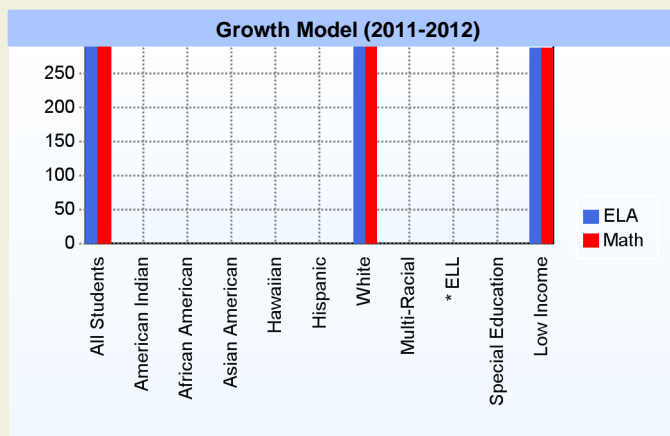
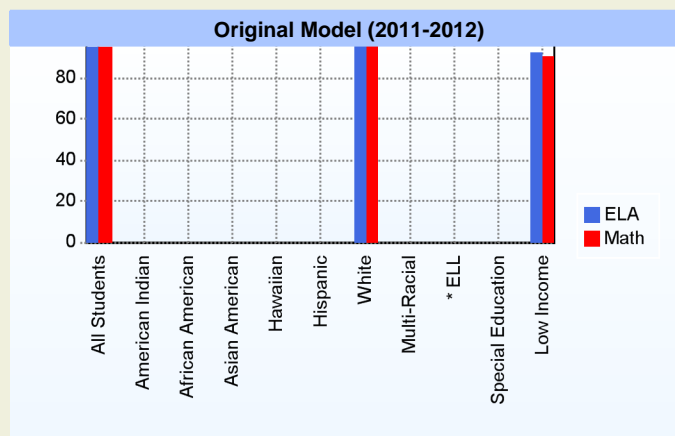


Curriculum Highlights

Shields uses the Open Court Reading program (@2009), Investigations for Math instruction, and the Smithsonian kits for Science instruction. The staff will use Learning Focused Strategies (Thompson, 2008) for lesson planning and implementation. Shields has placed 21st Century technology in all classes including state of the art computers, Smart Boards, and document cameras. Integration of curriculum and technology is necessary when providing and quality education for our students. Furthermore, a full-time Reading Specialist and Math Specialist provide direct services to students on both ends of the achievement spectrum allowing all students to be successful at Shields Elementary School.

AYP

Only groups with greater than 40 students are reported



* English Language Learner

* English Language Learner

% Test Participation (2011-2012)

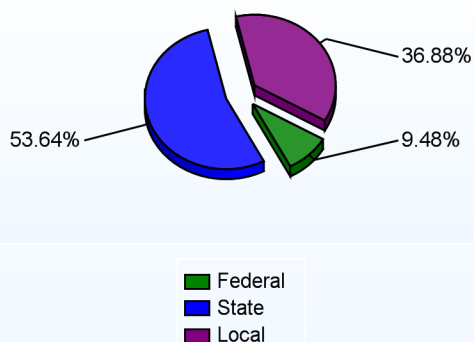
	<u>ELA</u>	<u>Math</u>	<u>ELA Goal</u>	<u>Math Goal</u>
All Students	100	100	95	95
American Indian	*	*	95	95
African American	*	*	95	95
Asian American	*	*	95	95
Hawaiian	*	*	95	95
Hispanic	*	*	95	95
White	100	100	95	95
Multi-Racial	*	*	95	95
English Language Learner	*	*	95	95
Special Education	*	*	95	95
Low Income	100	100	95	95



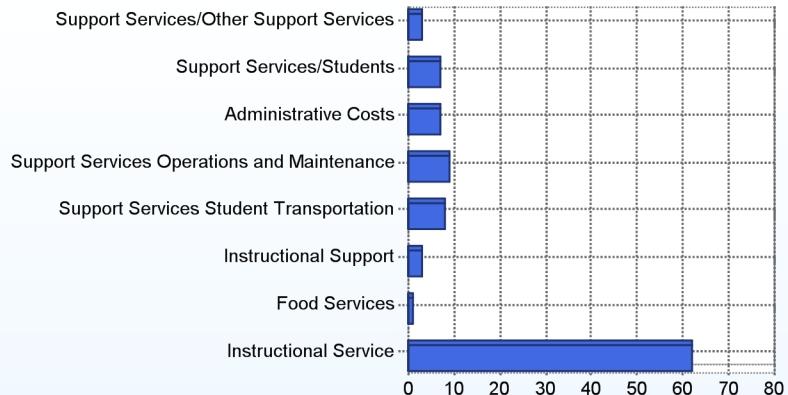
School Finances

District Expenditure per Pupil (2010-2011): \$16,064

District Sources of Revenue (2010-2011)



Percent District Allocation of Current Expenses by Category (2010-2011)



School Salary Allocation

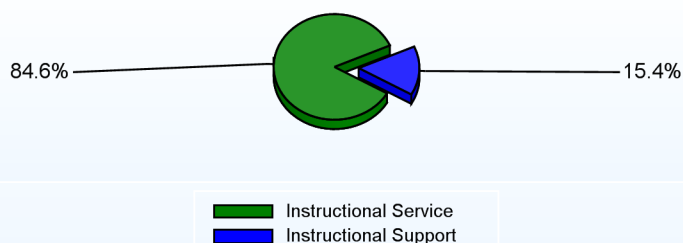
Instructional Service

	2012
Teachers	65.7%
Instructional Support	7.7%
Pupil Support	11.2%
Total	84.6%

Instructional Support

	2012
Administration	6.2%
Secretaries	1.9%
Food Services	3.1%
Maintenance	4.2%
Total	15.4%

Instructional vs. Support (2011-2012)



For further information and detailed reports, visit

<http://profiles.doe.k12.de.us>

or contact your local school district office.

Glossary: <http://profiles.doe.k12.de.us/glossary.aspx>



Delaware Department of Education

John G. Townsend Building
401 Federal Street, Suite #2
Dover, Delaware, 19901 - 3639
Phone: (302) 735-4000

District: Cape Henlopen School District
Address: 16391 Harbeson Rd., Milton DE 19968
Principal: Michael Dmiterchik
AYP: Met

Telephone: (302) 684-8516
Web: www.capehenlopeschools.com/education/school/school.php?sectionid=33

School Demographics

Fall Enrollment		
	2011	2012
Grade 6	149	173
Grade 7	127	151
Grade 8	163	141
Total	439	465

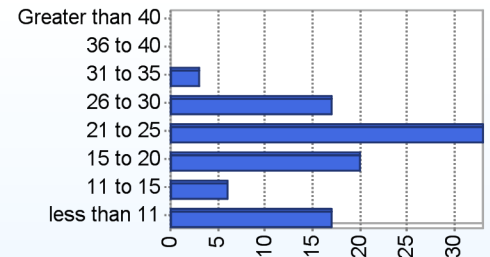
Recently Arrived ELL Students	
	2012
Number of Students Not Tested on ELA Assessment	0

Enrollment by Race/Ethnicity		
	2011	2012
African American	24.1%	23.9%
American Indian	0.7%	1.1%
Asian	0.9%	0.9%
Hispanic/Latino	12.8%	17.6%
White	61.3%	55.7%
Multi-Racial	0.2%	0.9%

School Promotion by Grade	
	2011
Grade 6	96.6%
Grade 7	98.4%
Grade 8	100.0%

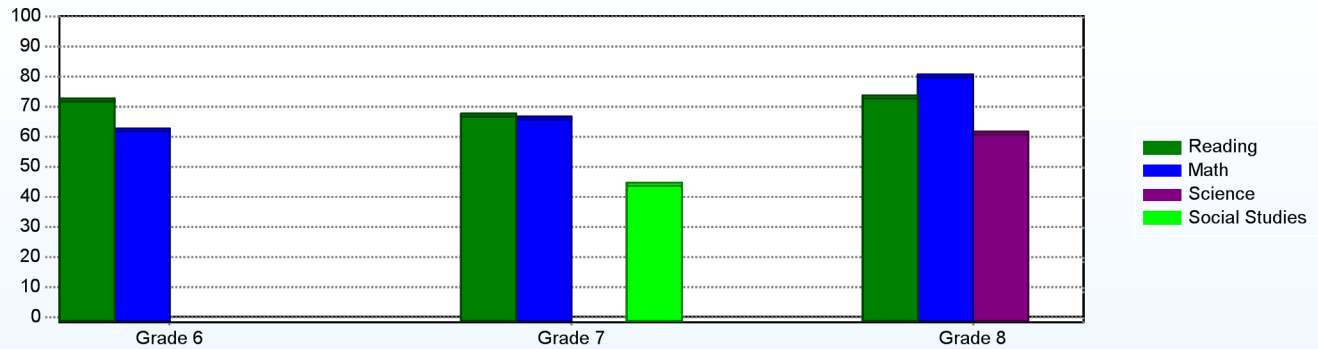
Other Student Characteristics		
	2011	2012
English Language Learner	2.7%	3.9%
Low Income	53.5%	63.7%
Special Education	15.7%	18.1%
Enrolled for Full Year	96.8%	N/A

Class Size (Percentage by Range) (2011-2012)



Student Achievement

Percentage of Students Meeting State Standards (2011-2012)



Exemplary Programs

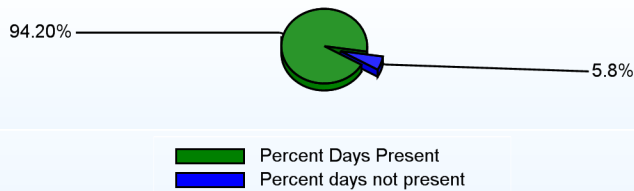
The Milton community is extremely proud of Mariner Middle School and all of the programs offered to our students and their families. Mariner was nominated by the Lt. Governor's Office during the 2008/2009 school year as a Model School of Excellence. We offer a variety of exemplary programs for students, staff, and parents. Our National Junior Honor Society and Student Government continue to raise money and provide support for a variety of local/national agencies and families. Staff, parents, and students at Mariner Middle School have helped to implement the following highly successful programs: Teacher Mentoring Program for At Risk Students, Peer Mentoring Program for all students, Positive Behavior Support Program, Student Portfolios with Achievement and Career Action Plans, Anti-Teasing Team, Lunch and Learn Program, Challenge Day & "To Be the Change Team". Our schedule emphasizes the four core subject areas of Language Arts, Math, Science, and Social Studies.

Student - School Safety and Discipline

Number of Reported Offenses (2011-2012)

	<u>School</u>	<u>District</u>	<u>State</u>
School Crimes (Title 14, Delaware Code, §4112)	4	29	957
Department of Education (DOE) Offenses	88	187	10291
All School Safety Policy in Place	Yes		

Percent Days Present (2011-2012)



Suspensions and Expulsions

	<u>2012</u>
Number of Suspensions	315
Number of Expulsions	0
Count of Students Suspended/Expelled	112
September 30 Enrollment	465
Percent of Students Suspended/Expelled	24%
District Percentage	10%
State Percentage	15%

Our Staff

Number of Instructional Staff

	<u>2012</u>
Teachers	36
Pupil Support	2
Total	38

Staff by Race/Ethnicity

	<u>2012</u>
American Indian	0.0%
African American	7.7%
Asian American	0.0%
Hispanic	0.0%
White	92.3%

Staffing Ratios

	<u>2012</u>
Students Per Teacher	13
Students Per Administrator	233
Students Per Instructional Staff	11
Students Per Pupil Support Staff	202
School Staff Per Administrator	29

Staff Qualifications

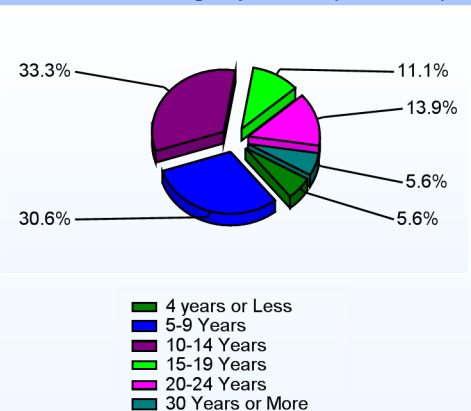
Percentage of Classes Taught by Highly Qualified Teachers (2011-2012)

	<u>Total Classes</u>	<u>% Highly Qualified</u>	<u>% Not Highly Qualified</u>
Reading/ Language Arts	36	94.4%	5.6%
Arts	41	100.0%	0.0%
Science	22	90.9%	9.1%
Mathematics	35	88.6%	11.4%
Social Studies	18	66.7%	33.3%
Elementary General	8	100.0%	0.0%

Education Level

	<u>2012</u>
Percent with Masters Degree and Above	65.9%
Percent Holding National Board for Professional Teaching Standards	2.7%

Years of Teaching Experience (2011-2012)

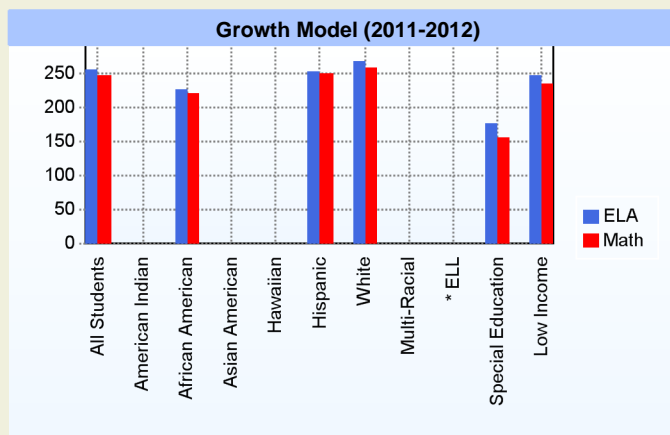
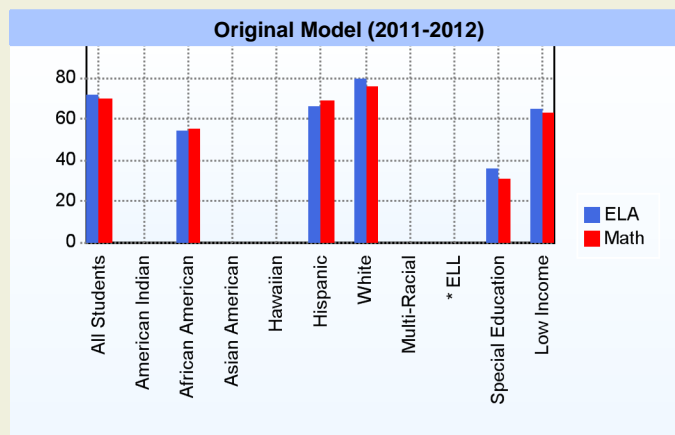


Curriculum Highlights

Mariner Middle School offers a variety of programs and extra-curricular activities for students. Academic Challenge Courses in Math and English are offered at Del Tech College for 8th grade students who meet the district criteria. Enrichment courses that are designed to strengthen student's mastery in reading and math are taught by our Reading and Math Specialists. Over 200 sixth, seventh, and eighth grade students participate in our Concert Band, Chorus, and Drama Club. The Concert Band, Chorus, and Drama Club perform winter and spring shows in front of a large Cape Community Crowd. Many of these students will also participate in the annual talent shows. A majority of Mariner Students also participate in a variety of extra-curricular programs that include Football, Field hockey, Volleyball, Soccer, Cheerleading, Basketball, Wrestling, Track, Softball and Baseball.

AYP

Only groups with greater than 40 students are reported



* English Language Learner

* English Language Learner

% Test Participation (2011-2012)

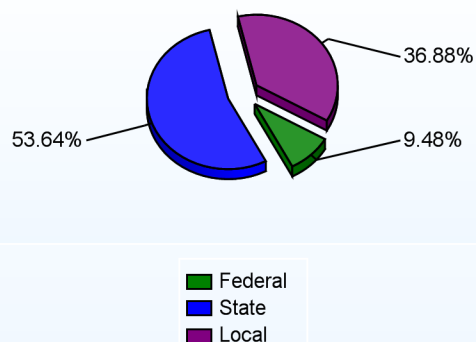
	<u>ELA</u>	<u>Math</u>	<u>ELA Goal</u>	<u>Math Goal</u>
All Students	100	100	95	95
American Indian	*	*	95	95
African American	100	100	95	95
Asian American	*	*	95	95
Hawaiian	*	*	95	95
Hispanic	100	100	95	95
White	100	100	95	95
Multi-Racial	*	*	95	95
English Language Learner	*	*	95	95
Special Education	100	100	95	95
Low Income	100	100	95	95



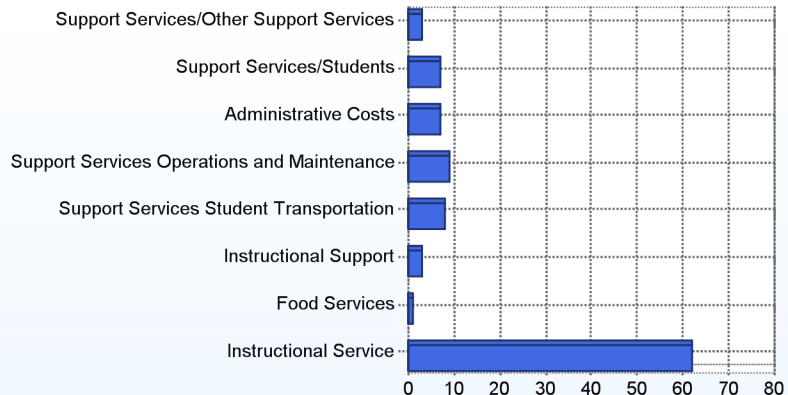
School Finances

District Expenditure per Pupil (2010-2011): \$16,064

District Sources of Revenue (2010-2011)



Percent District Allocation of Current Expenses by Category (2010-2011)



School Salary Allocation

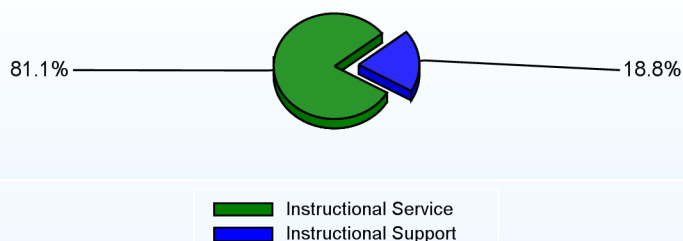
Instructional Service

	2012
Teachers	72.0%
Instructional Support	4.0%
Pupil Support	5.1%
Total	81.1%

Instructional Support

	2012
Administration	6.3%
Secretaries	2.4%
Food Services	3.9%
Maintenance	6.2%
Total	18.8%

Instructional vs. Support (2011-2012)



For further information and detailed reports, visit

<http://profiles.doe.k12.de.us>

or contact your local school district office.

Glossary: <http://profiles.doe.k12.de.us/glossary.aspx>



Delaware Department of Education

John G. Townsend Building
401 Federal Street, Suite #2
Dover, Delaware, 19901 - 3639
Phone: (302) 735-4000

District: Cape Henlopen School District
Address: 512 Federal Street, Milton DE 19968
Principal: Kevin Mumford
AYP: Met

Telephone: (302) 684-2516
Web: www.capehenlopeschools.com/education/school/school.php?sectionid=34

School Demographics

Fall Enrollment		
	2011	2012
Kindergarten	90	88
Grade 1	94	98
Grade 2	83	103
Grade 3	74	93
Grade 4	95	84
Grade 5	73	99
Total	509	565

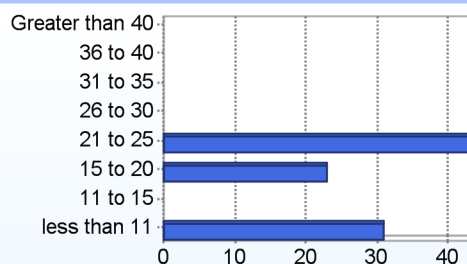
Enrollment by Race/Ethnicity		
	2011	2012
African American	11.2%	11.0%
American Indian	0.8%	0.7%
Asian	2.9%	1.2%
Hawaiian		0.2%
Hispanic/Latino	8.8%	8.8%
White	71.9%	73.8%
Multi-Racial	4.3%	4.2%

Other Student Characteristics		
	2011	2012
English Language Learner	5.3%	3.5%
Low Income	39.7%	43.0%
Special Education	8.1%	9.9%
Enrolled for Full Year	96.5%	N/A

Recently Arrived ELL Students	
	2012
Number of Students Not Tested on ELA Assessment	0

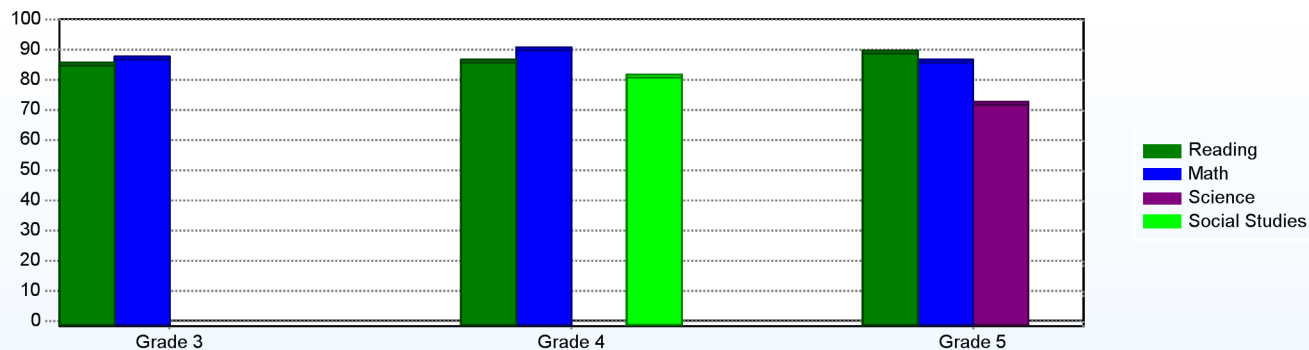
School Promotion by Grade	
	2011
Kindergarten	100.0%
Grade 1	94.7%
Grade 2	96.4%
Grade 3	100.0%
Grade 4	100.0%
Grade 5	100.0%

Class Size (Percentage by Range) (2011-2012)



Student Achievement

Percentage of Students Meeting State Standards (2011-2012)



Exemplary Programs

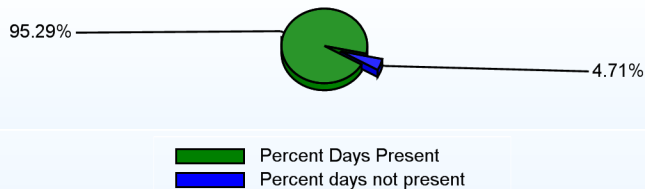
We are rated Superior by the DE DOE for test scores and AYP. We are a Positive Behavior Support Star School. Our 21st Century School Grant provides a summer camp and after-school enrichment and remediation. Young authors' Publishing Parties involve K-5 in writing, illustrating, and reading. The LEAP program helps primary students improve their reading skills. Two concerts are performed by 4th/5th grade chorus & 5th grade band; 2nd grade presents a theatrical production. We have Field Day & a Health Fair. PE Fitness Grams measure student flexibility, strength & cardio-endurance. We work closely with Nemours. Teachers and para are trained in CATCH, a program that increases physical fitness. Computer projects abound; grades 1-3 create books for classroom libraries. Students enter art & poetry in contests. A Safe Routes to School grant allows students to walk and bike to school. We are in Phase II of creating a Butterfly Garden with staff and community assistance.

Student - School Safety and Discipline

Number of Reported Offenses (2011-2012)

	<u>School</u>	<u>District</u>	<u>State</u>
School Crimes (Title 14, Delaware Code, §4112)	5	29	957
Department of Education (DOE) Offenses		187	10291
All School Safety Policy in Place	Yes		

Percent Days Present (2011-2012)



Suspensions and Expulsions

	<u>2012</u>
Number of Suspensions	23
Number of Expulsions	0
Count of Students Suspended/Expelled	18
September 30 Enrollment	565
Percent of Students Suspended/Expelled	3%
District Percentage	10%
State Percentage	15%

Our Staff

Number of Instructional Staff

	<u>2012</u>
Teachers	40
Pupil Support	5
Total	45

Staff by Race/Ethnicity

	<u>2012</u>
American Indian	0.0%
African American	6.4%
Asian American	4.3%
Hispanic	2.1%
White	87.2%

Staffing Ratios

	<u>2012</u>
Students Per Teacher	14
Students Per Administrator	188
Students Per Instructional Staff	11
Students Per Pupil Support Staff	126
School Staff Per Administrator	24

Staff Qualifications

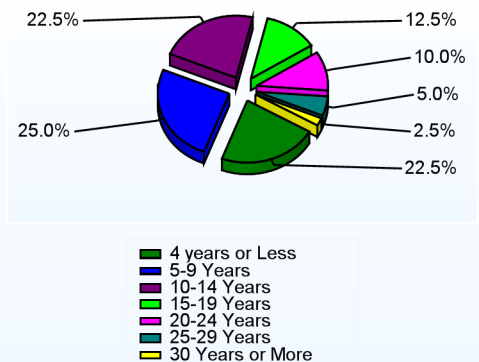
Percentage of Classes Taught by Highly Qualified Teachers (2011-2012)

	<u>Total Classes</u>	<u>% Highly Qualified</u>	<u>% Not Highly Qualified</u>
Reading/ Language Arts	1	100.0%	0.0%
Arts	3	100.0%	0.0%
Elementary General	35	100.0%	0.0%

Education Level

	<u>2012</u>
Percent with Masters Degree and Above	49.2%
Percent Holding National Board for Professional Teaching Standards	7.7%

Years of Teaching Experience (2011-2012)

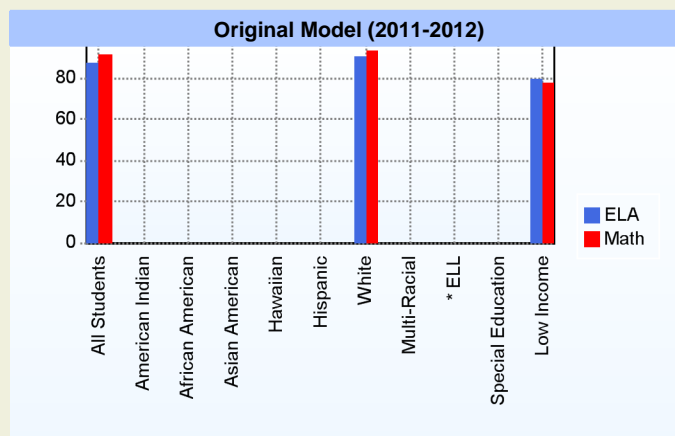


Curriculum Highlights

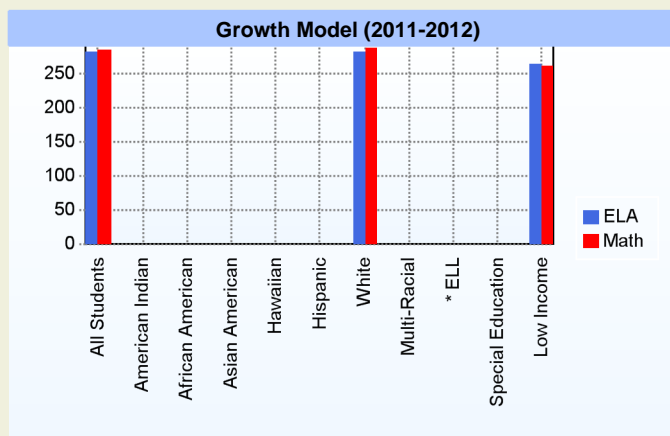
Students learn in an accepting and challenging environment to think critically, influence others positively and respect diversity. Our academic program is anchored on DE standards. Teachers use Open Court reading, Investigations math and Smithsonian science materials. Related Arts for K-5: Art, Music, Computers, PE and Library. H.O.S.T.S. provides individualized & small group reading instruction with voluntary mentors. Full-time Reading and Math Specialists provide direct services to students on both ends of the achievement spectrum. Cutting-edge technology is available & utilized in every classroom. Support is provided for special education and English language learners. The administration & highly qualified teachers promote an atmosphere of respect for individuality. Students are given opportunities to cultivate acquired knowledge through differentiated instruction and ongoing assessment. Max Thompson's Learning Focused Strategies are used for planning and instruction.

AYP

Only groups with greater than 40 students are reported



* English Language Learner



* English Language Learner

% Test Participation (2011-2012)

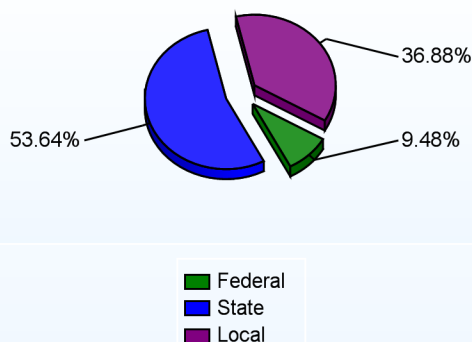
	<u>ELA</u>	<u>Math</u>	<u>ELA Goal</u>	<u>Math Goal</u>
All Students	100	100	95	95
American Indian	*	*	95	95
African American	*	*	95	95
Asian American	*	*	95	95
Hawaiian	*	*	95	95
Hispanic	*	*	95	95
White	100	100	95	95
Multi-Racial	*	*	95	95
English Language Learner	*	*	95	95
Special Education	*	*	95	95
Low Income	100	100	95	95



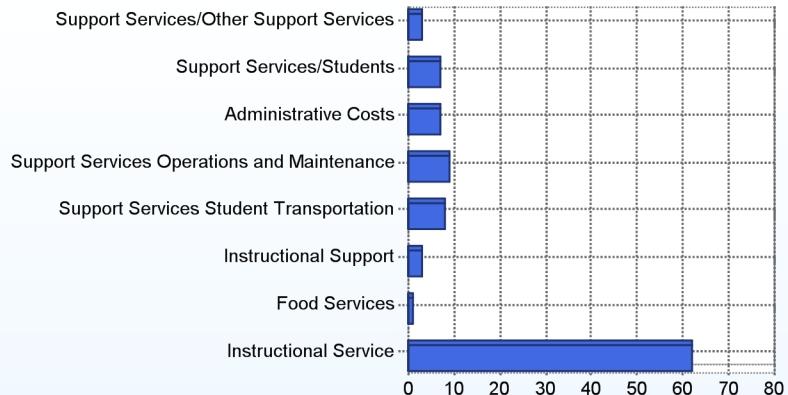
School Finances

District Expenditure per Pupil (2010-2011): \$16,064

District Sources of Revenue (2010-2011)



Percent District Allocation of Current Expenses by Category (2010-2011)



School Salary Allocation

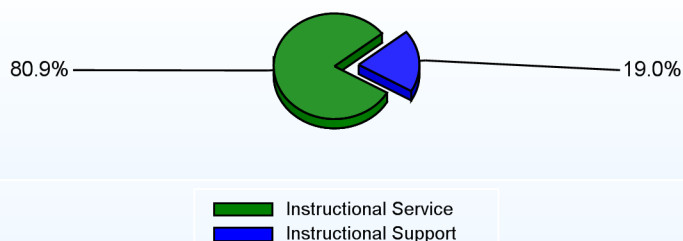
Instructional Service

	2012
Teachers	66.2%
Instructional Support	9.7%
Pupil Support	5.0%
Total	80.9%

Instructional Support

	2012
Administration	8.6%
Secretaries	2.1%
Food Services	3.1%
Maintenance	5.2%
Total	19.0%

Instructional vs. Support (2011-2012)



For further information and detailed reports, visit

<http://profiles.doe.k12.de.us>

or contact your local school district office.

Glossary: <http://profiles.doe.k12.de.us/glossary.aspx>



Delaware Department of Education

John G. Townsend Building
401 Federal Street, Suite #2
Dover, Delaware, 19901 - 3639
Phone: (302) 735-4000

District: Cape Henlopen School District

Telephone: (302) 227-2571

Address: 500 Stockley Street, Rehoboth Beach DE 19971

Web: www.capehenlopeschools.com/education/school/school.php?sectionid=35

Principal: Patricia Mumford

AYP: Met

School Demographics

Fall Enrollment		
	2011	2012
Kindergarten	100	96
Grade 1	93	109
Grade 2	97	98
Grade 3	79	96
Grade 4	102	82
Grade 5	88	102
Total	559	583

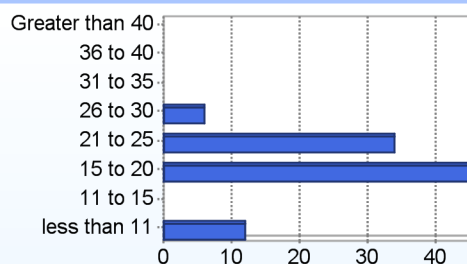
Enrollment by Race/Ethnicity		
	2011	2012
African American	10.2%	9.9%
American Indian	0.5%	0.2%
Asian	2.9%	1.9%
Hawaiian	0.2%	0.2%
Hispanic/Latino	10.6%	11.5%
White	70.8%	72.0%
Multi-Racial	4.8%	4.3%

Other Student Characteristics		
	2011	2012
English Language Learner	4.8%	4.5%
Low Income	41.1%	43.2%
Special Education	8.1%	7.2%
Enrolled for Full Year	96.6%	N/A

Recently Arrived ELL Students	
	2012
Number of Students Not Tested on ELA Assessment	0

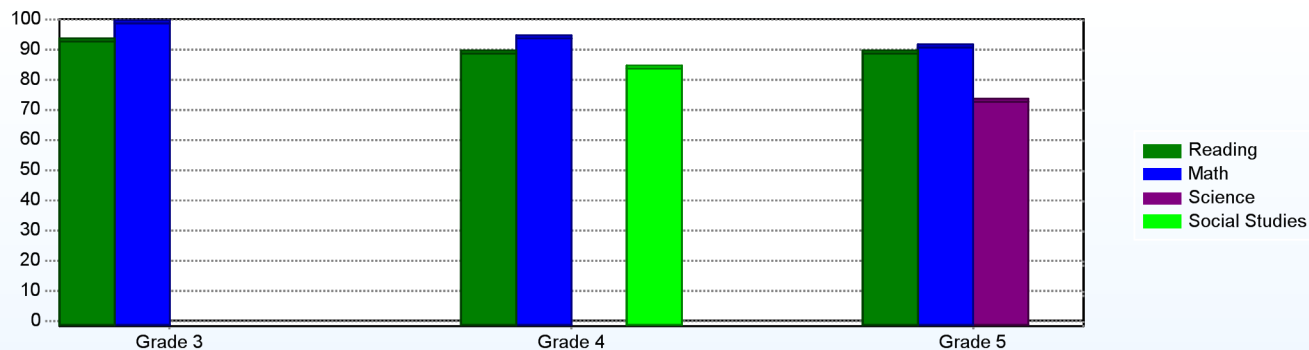
School Promotion by Grade	
	2011
Kindergarten	97.0%
Grade 1	94.6%
Grade 2	96.9%
Grade 3	100.0%
Grade 4	100.0%
Grade 5	100.0%

Class Size (Percentage by Range) (2011-2012)



Student Achievement

Percentage of Students Meeting State Standards (2011-2012)



Exemplary Programs

Rehoboth Elementary (RES) continues to implement the Positive Behavior Support program. Our school-wide expectations are Respect, Excellence and Safety. Students learn about the expectations for each area of the building through "Cool Tool" lessons. Expected behaviors are reinforced by awarding "Starfish" coupons. Rehoboth has a history of being an award winning Positive Behavior Support school.

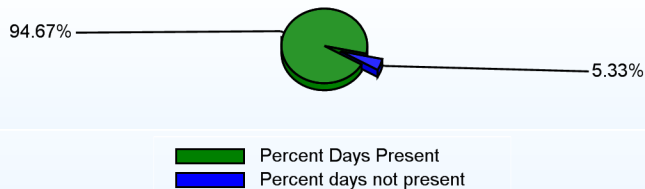
At Rehoboth Elementary we have a commitment to expose our students to a variety of fine arts opportunities. Every spring, students put on a Broadway-caliber musical featuring singing, dancing, and a beautiful set. One would never know that 3rd, 4th, and 5th graders are the main characters, ushers, and they run the light and sound equipment as it truly feels as if professionals are putting on the show. RES also features a top-notch general band, Jazz Band and Chorus which perform each season for students and the community.

Student - School Safety and Discipline

Number of Reported Offenses (2011-2012)

	<u>School</u>	<u>District</u>	<u>State</u>
School Crimes (Title 14, Delaware Code, §4112)		29	957
Department of Education (DOE) Offenses	3	187	10291
All School Safety Policy in Place	Yes		

Percent Days Present (2011-2012)



Suspensions and Expulsions

	<u>2012</u>
Number of Suspensions	31
Number of Expulsions	0
Count of Students Suspended/Expelled	14
September 30 Enrollment	583
Percent of Students Suspended/Expelled	2%
District Percentage	10%
State Percentage	15%

Our Staff

Number of Instructional Staff

	<u>2012</u>
Teachers	38
Pupil Support	5
Total	43

Staff by Race/Ethnicity

	<u>2012</u>
American Indian	0.0%
African American	2.3%
Asian American	0.0%
Hispanic	0.0%
White	97.7%

Staffing Ratios

	<u>2012</u>
Students Per Teacher	15
Students Per Administrator	292
Students Per Instructional Staff	12
Students Per Pupil Support Staff	130
School Staff Per Administrator	33

Staff Qualifications

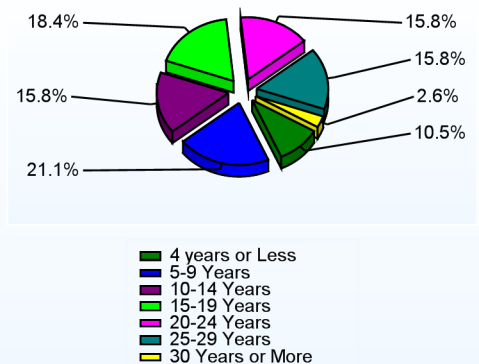
Percentage of Classes Taught by Highly Qualified Teachers (2011-2012)

	<u>Total Classes</u>	<u>% Highly Qualified</u>	<u>% Not Highly Qualified</u>
Reading/ Language Arts	1	100.0%	0.0%
Arts	2	100.0%	0.0%
Elementary General	34	100.0%	0.0%

Education Level

	<u>2012</u>
Percent with Masters Degree and Above	55.4%
Percent Holding National Board for Professional Teaching Standards	2.4%

Years of Teaching Experience (2011-2012)

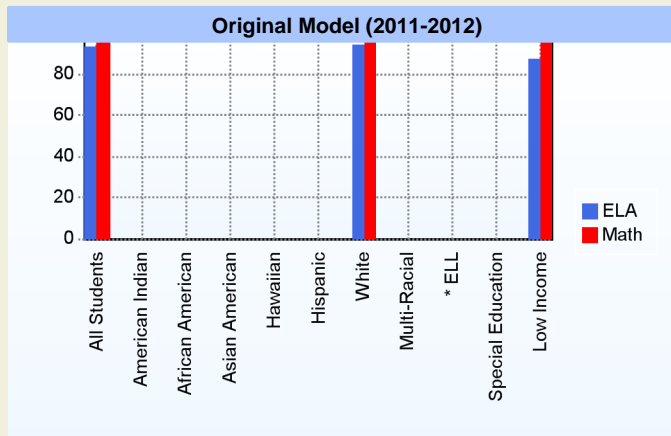


Curriculum Highlights

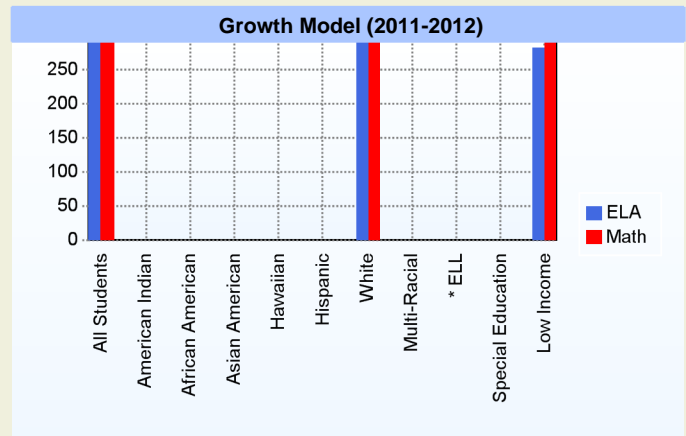
Our curriculum is based on Delaware and Common Core standards. We use the Imagine It reading series and Investigations math program to provide instruction for language arts and math respectively. To enhance our curriculum the students use Accelerated Reader (AR) which allows the students to read a book at their given reading level and take a computer-based comprehension/vocabulary quiz to check for understanding. With AR, almost every book in our library has an available quiz making it easy for students to find an AR book they enjoy. We reinforce basic math calculation with Math Facts in a Flash. Students use the web-based programs Reading Eggs and Study Island to practice the concepts taught through the curriculum for both reading and math. Students earn blue ribbons as they master the concepts. The use of technology in the forms of SmartBoards, laptops and the iPod touch engage students and make learning fun!

AYP

Only groups with greater than 40 students are reported



* English Language Learner



* English Language Learner

% Test Participation (2011-2012)

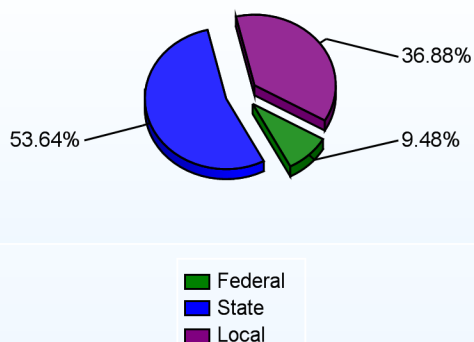
	<u>ELA</u>	<u>Math</u>	<u>ELA Goal</u>	<u>Math Goal</u>
All Students	100	100	95	95
American Indian	*	*	95	95
African American	*	*	95	95
Asian American	*	*	95	95
Hawaiian	*	*	95	95
Hispanic	*	*	95	95
White	100	100	95	95
Multi-Racial	*	*	95	95
English Language Learner	*	*	95	95
Special Education	*	*	95	95
Low Income	100	100	95	95



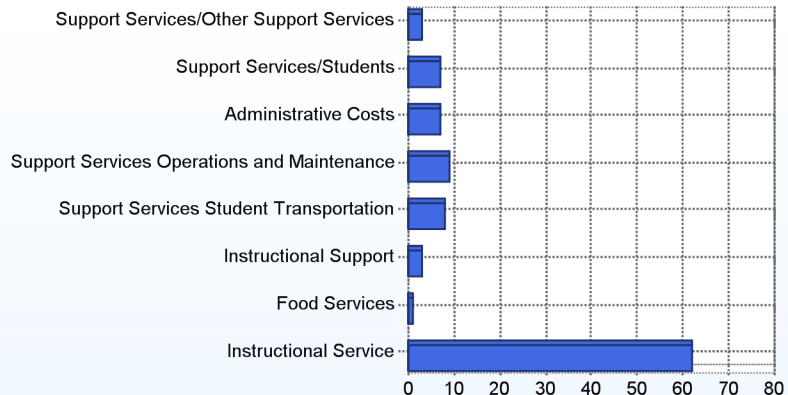
School Finances

District Expenditure per Pupil (2010-2011): \$16,064

District Sources of Revenue (2010-2011)



Percent District Allocation of Current Expenses by Category (2010-2011)



School Salary Allocation

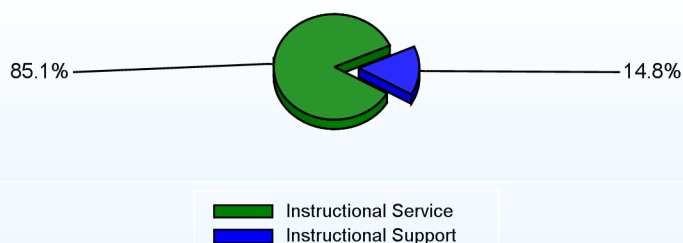
Instructional Service

	2012
Teachers	70.7%
Instructional Support	8.6%
Pupil Support	5.8%
Total	85.1%

Instructional Support

	2012
Administration	5.7%
Secretaries	2.0%
Food Services	2.3%
Maintenance	4.8%
Total	14.8%

Instructional vs. Support (2011-2012)



For further information and detailed reports, visit

<http://profiles.doe.k12.de.us>

or contact your local school district office.

Glossary: <http://profiles.doe.k12.de.us/glossary.aspx>



Delaware Department of Education

John G. Townsend Building
401 Federal Street, Suite #2
Dover, Delaware, 19901 - 3639
Phone: (302) 735-4000

District: Cape Henlopen School District

Telephone: (302) 645-6288

Address: 19483 John J. Williams Highway, Lewes DE 19958

Web: www.capehenlopeschools.com/education/school/school.php?sectionid=30

Principal: David Frederick

AYP: Met

School Demographics

Fall Enrollment		
	2011	2012
Grade 6	173	195
Grade 7	134	185
Grade 8	165	140
Total	472	520

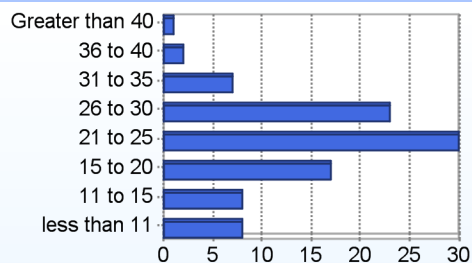
Recently Arrived ELL Students	
	2012
Number of Students Not Tested on ELA Assessment	3

Enrollment by Race/Ethnicity		
	2011	2012
African American	10.8%	10.2%
American Indian	0.6%	0.4%
Asian	3.0%	2.9%
Hispanic/Latino	8.1%	8.8%
White	73.9%	73.1%
Multi-Racial	3.6%	4.6%

School Promotion by Grade	
	2011
Grade 6	99.4%
Grade 7	99.3%
Grade 8	100.0%

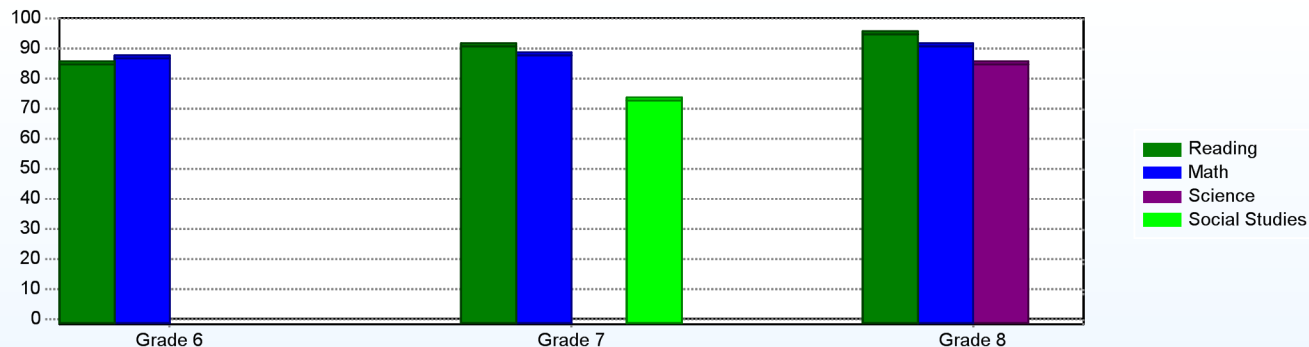
Other Student Characteristics		
	2011	2012
English Language Learner	0.8%	1.7%
Low Income	36.7%	43.5%
Special Education	15.3%	18.1%
Enrolled for Full Year	97.7%	N/A

Class Size (Percentage by Range) (2011-2012)



Student Achievement

Percentage of Students Meeting State Standards (2011-2012)



Exemplary Programs

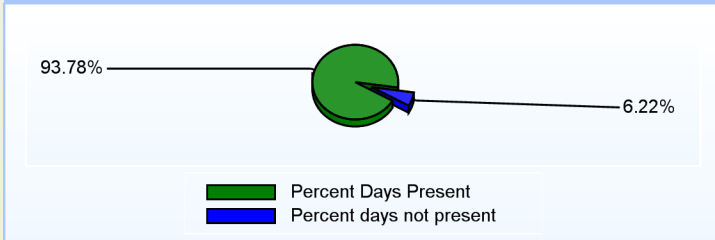
Beacon Middle School is comprised of grades six, seven, and eight. Each grade level is comprised of two teams. Because the intellectual, social, physical, and emotional needs of this age group are different from either elementary or high school students, a customized educational program is necessary. The middle school is a bridge between elementary school and high school. It is not an exaggerated elementary school nor a miniature high school, but a blend of the two. Since team teachers have the same planning period, they are able to plan for curriculum integration, interdisciplinary units, field trips and special activities for their students. Communication and support among teachers is much greater with this approach.

Student - School Safety and Discipline

Number of Reported Offenses (2011-2012)

	<u>School</u>	<u>District</u>	<u>State</u>
School Crimes (Title 14, Delaware Code, §4112)	4	29	957
Department of Education (DOE) Offenses	40	187	10291
All School Safety Policy in Place	Yes		

Percent Days Present (2011-2012)



Suspensions and Expulsions

	<u>2012</u>
Number of Suspensions	99
Number of Expulsions	0
Count of Students Suspended/Expelled	40
September 30 Enrollment	520
Percent of Students Suspended/Expelled	8%
District Percentage	10%
State Percentage	15%

Our Staff

Number of Instructional Staff

	<u>2012</u>
Teachers	37
Pupil Support	2
Total	39

Staff by Race/Ethnicity

	<u>2012</u>
American Indian	0.0%
African American	5.1%
Asian American	0.0%
Hispanic	0.0%
White	94.9%

Staffing Ratios

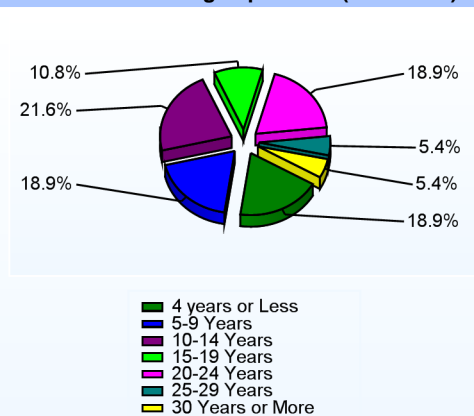
	<u>2012</u>
Students Per Teacher	14
Students Per Administrator	260
Students Per Instructional Staff	12
Students Per Pupil Support Staff	260
School Staff Per Administrator	29

Staff Qualifications

Percentage of Classes Taught by Highly Qualified Teachers (2011-2012)

	<u>Total Classes</u>	<u>% Highly Qualified</u>	<u>% Not Highly Qualified</u>
English	1	100.0%	0.0%
Reading/ Language Arts	30	70.0%	30.0%
Arts	42	100.0%	0.0%
Science	21	95.2%	4.8%
Mathematics	27	92.6%	7.4%
Social Studies	15	80.0%	20.0%
Elementary General	9	100.0%	0.0%

Years of Teaching Experience (2011-2012)



Education Level

	<u>2012</u>
Percent with Masters Degree and Above	68.2%
Percent Holding National Board for Professional Teaching Standards	2.7%

Curriculum Highlights

In addition to the core subject areas the following courses are offered:

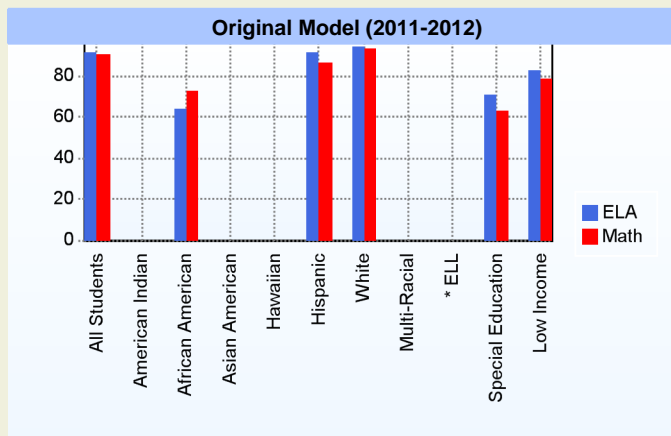
1. Accelerated coursework in Language Arts and Math at all grade levels.
2. Opportunity to participate in The Academic Challenge program in eighth grade for those who qualify.
3. Instrumental Band is offered to participating students every day all year.*
4. Chorus is offered every day all year.*
5. Technology Education-9 weeks (all students)
6. Business Education-9 weeks (all students)
7. Physical Education-9 weeks (all students)
8. Art -9 weeks
10. General Music-9 weeks
11. Reading and Research-9 weeks

* Students who participate in Band or Chorus will round out their exploratory schedules with the following courses: Physical Education, Technology Education, and Business Education.

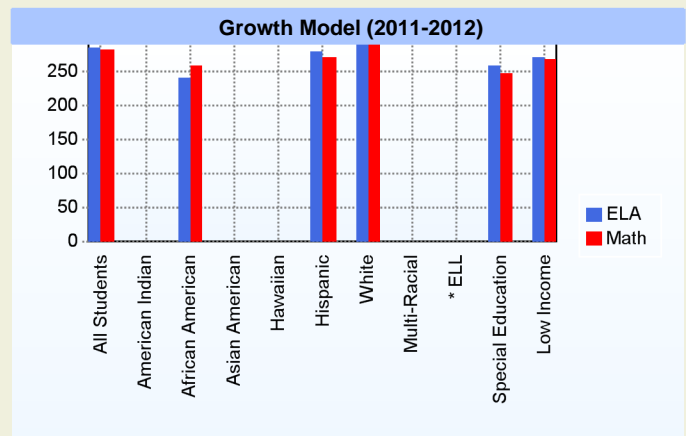
Extra Curricular: Football, Boys Soccer, Field Hockey, Intramural Volleyball (girls), Cheerleading, Boys Basketball, Girls Basketball, Wrestling, Baseball, Softball, Girls Soccer, Track and Field, Math League..

AYP

Only groups with greater than 40 students are reported



* English Language Learner



* English Language Learner

% Test Participation (2011-2012)

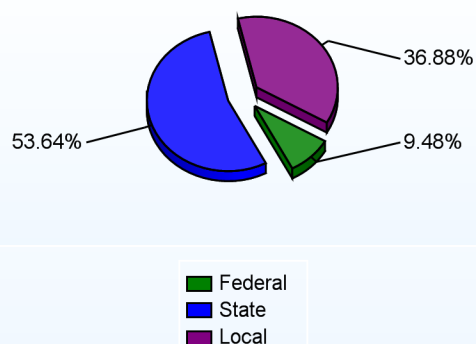
	<u>ELA</u>	<u>Math</u>	<u>ELA Goal</u>	<u>Math Goal</u>
All Students	100	100	95	95
American Indian	*	*	95	95
African American	100	100	95	95
Asian American	*	*	95	95
Hawaiian	*	*	95	95
Hispanic	100	100	95	95
White	100	100	95	95
Multi-Racial	*	*	95	95
English Language Learner	*	*	95	95
Special Education	100	100	95	95
Low Income	100	100	95	95



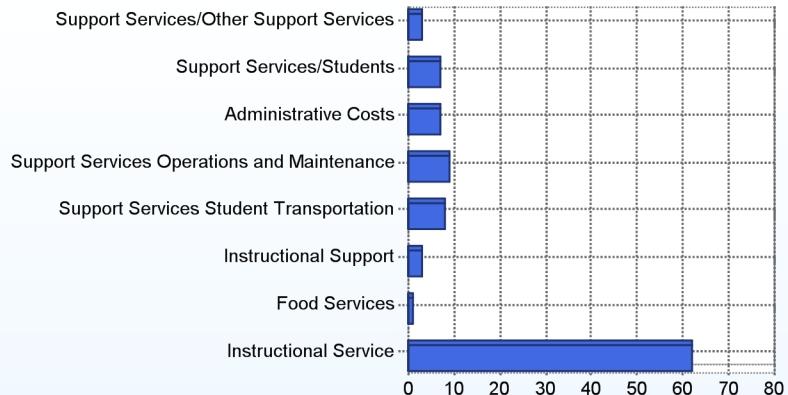
School Finances

District Expenditure per Pupil (2010-2011): \$16,064

District Sources of Revenue (2010-2011)



Percent District Allocation of Current Expenses by Category (2010-2011)



School Salary Allocation

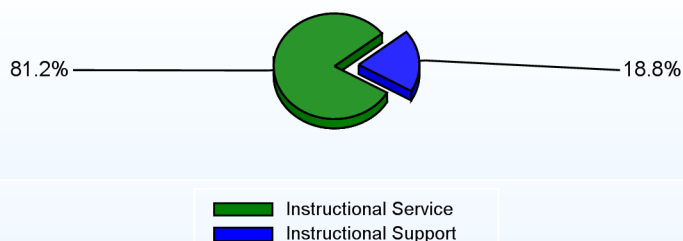
Instructional Service

	2012
Teachers	73.3%
Instructional Support	3.5%
Pupil Support	4.4%
Total	81.2%

Instructional Support

	2012
Administration	6.8%
Secretaries	2.7%
Food Services	3.4%
Maintenance	5.9%
Total	18.8%

Instructional vs. Support (2011-2012)



For further information and detailed reports, visit

<http://profiles.doe.k12.de.us>

or contact your local school district office.

Glossary: <http://profiles.doe.k12.de.us/glossary.aspx>



Delaware Department of Education

John G. Townsend Building
401 Federal Street, Suite #2
Dover, Delaware, 19901 - 3639
Phone: (302) 735-4000

Cape Henlopen High School (School Year 2011-12)

Page 1 of 4

District: Cape Henlopen School District
Address: 1250 Kings Highway, Lewes DE 19958
Principal: Brian Donahue
AYP: Met

Telephone: (302) 645-7711
Web: www.capehenlopenschools.com/education/school/school.php?sectionid=31

School Demographics

Fall Enrollment		
	2011	2012
Grade 9	367	382
Grade 10	352	364
Grade 11	312	313
Grade 12	206	243
Total	1237	1302

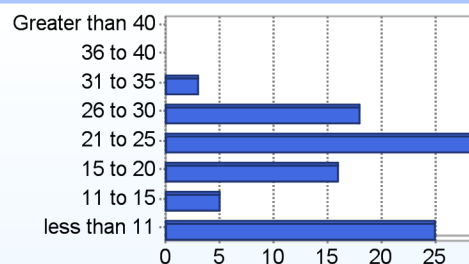
Recently Arrived ELL Students	
	2012
Number of Students Not Tested on ELA Assessment	5

Enrollment by Race/Ethnicity		
	2011	2012
African American	17.7%	17.2%
American Indian	1.1%	0.7%
Asian	1.9%	2.3%
Hawaiian	0.1%	0.1%
Hispanic/Latino	7.6%	7.8%
White	71.5%	71.5%
Multi-Racial	0.1%	0.4%

School Promotion by Grade	
	2011
Grade 9	90.7%
Grade 10	87.2%
Grade 11	94.9%
Grade 12	98.5%

Other Student Characteristics		
	2011	2012
English Language Learner	2.2%	1.3%
Low Income	38.8%	42.7%
Special Education	12.7%	14.2%
Enrolled for Full Year	94.6%	N/A

Class Size (Percentage by Range) (2011-2012)

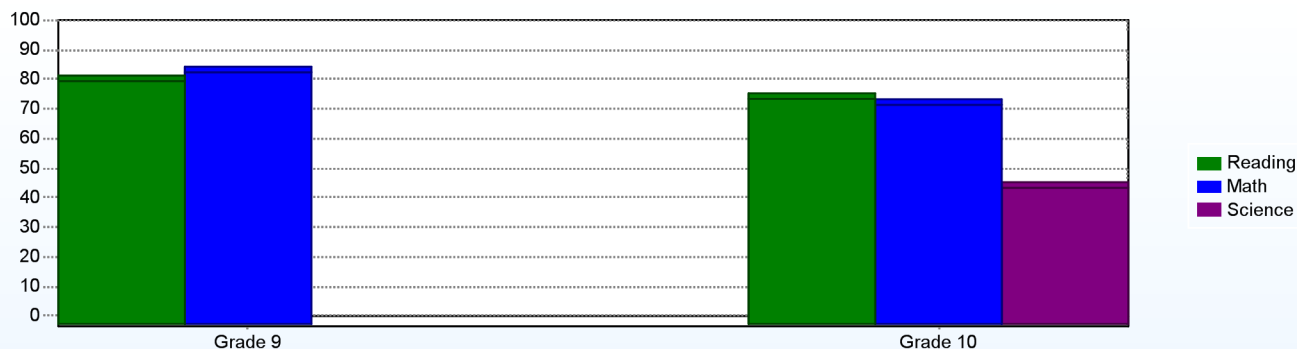


Student Achievement

Advanced Placement (AP) (2010-2011)	
	2011
Advanced Placement Courses	22
No. of Students Enrolled	150
No. of Exams Taken	80
Total No. of Exams Passed	31

Public School SAT Reasoning Test (Average Score) (2010-2011)				
	School	District	State	National
Math	491	490	477	514
Critical Reading	481	480	472	497
Writing	457	457	457	489
Total	1,429	1,427	1,406	1,500

Percentage of Students Meeting State Standards (2011-2012)



Exemplary Programs

Through a vibrant partnership with Del Tech and Beebe Hospital, students are able to earn a Certified Nursing Assistant certificate. This program includes rigorous and relevant internship opportunities.

JROTC students are extremely active in service to the school and the community. This leadership program is instrumental to the success of the school as a whole. The JROTC program received the Governor's highest volunteer award this past school year for their work in the Cape community.

Many Cape students have received local, state, and national recognition while participating in our theater and performing arts program. These programs provide students with a clear four year academy experience. Our band and choral students are recognized for excellence annually.

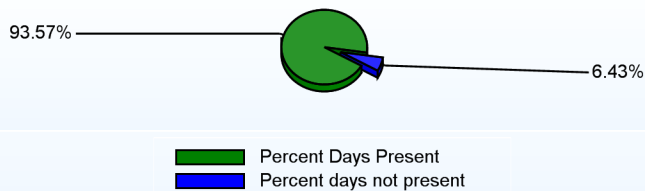
Cape Henlopen High School enjoys an outstanding athletic program to support student academic goals and interests.

Student - School Safety and Discipline

Number of Reported Offenses (2011-2012)

	<u>School</u>	<u>District</u>	<u>State</u>
School Crimes (Title 14, Delaware Code, §4112)	8	29	957
Department of Education (DOE) Offenses	48	187	10291
All School Safety Policy in Place	Yes		

Percent Days Present (2011-2012)



Suspensions and Expulsions

	<u>2012</u>
Number of Suspensions	449
Number of Expulsions	6
Count of Students Suspended/Expelled	229
September 30 Enrollment	1302
Percent of Students Suspended/Expelled	18%
District Percentage	10%
State Percentage	15%

Our Staff

Number of Instructional Staff

	<u>2012</u>
Teachers	85
Librarians	1
Pupil Support	11
Total	97

Staff by Race/Ethnicity

	<u>2012</u>
American Indian	0.0%
African American	9.3%
Asian American	1.0%
Hispanic	1.0%
White	88.7%

Staffing Ratios

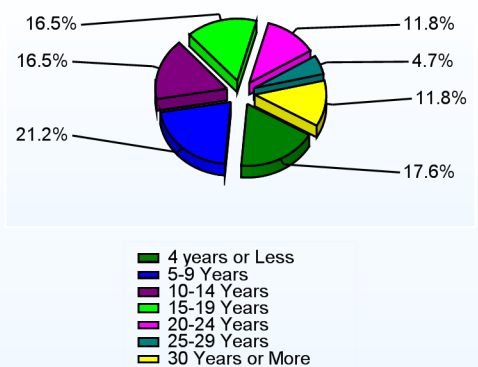
	<u>2012</u>
Students Per Teacher	15
Students Per Administrator	434
Students Per Instructional Staff	13
Students Per Pupil Support Staff	118
School Staff Per Administrator	50

Staff Qualifications

Percentage of Classes Taught by Highly Qualified Teachers (2011-2012)

	<u>Total Classes</u>	<u>% Highly Qualified</u>	<u>% Not Highly Qualified</u>
English	122	97.5%	2.5%
Reading/ Language Arts	4	100.0%	0.0%
Arts	71	100.0%	0.0%
Foreign Languages	84	100.0%	0.0%
Science	93	86.0%	14.0%
Mathematics	118	98.3%	1.7%
Geography	4	100.0%	0.0%
Civics & Government	16	87.5%	12.5%
Economics	15	93.3%	6.7%
Social Studies	12	91.7%	8.3%
History	58	100.0%	0.0%

Years of Teaching Experience (2011-2012)



Education Level

	<u>2012</u>
Percent with Masters Degree and Above	57.1%
Percent Holding National Board for Professional Teaching Standards	3.3%

Curriculum Highlights

The Honors Program serves the needs of academically-talented students by providing academic opportunities that rival college-level courses. Honors, AP courses, and the University of Delaware's English 110 course are offered.

While Cape Henlopen High School offers a variety of Career Pathways, the school is developing academies in areas which include the following:

Health Care and Human Services including the Certified Nursing Assistant Academy
 Leadership and JROTC
 Theater and Performing Arts
 Business, Finance and Technology
 Hospitality and Tourism
 World Languages

Staff development includes Learning Focused Strategy training and summer workshop initiatives which concentrate on curriculum alignment in core subject areas.

A variety of extra-curricular activities are available to students designed to support our academic mission, service opportunities, and student interests.

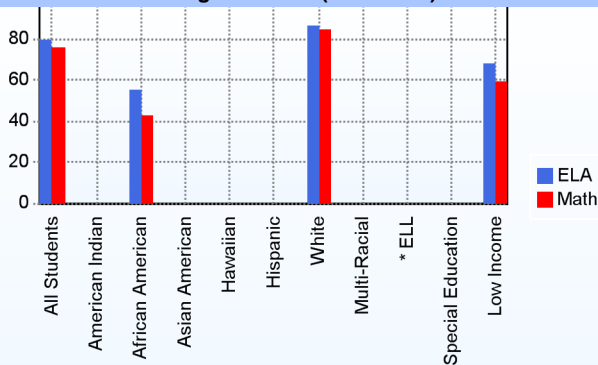
Graduation Rate - ESEA 4 Year Adjusted

	2010	2011
	<u>ESEA</u>	<u>ESEA</u>
All Students	76.8%	79.1%
American Indian	33.3%	66.7%
African American	68.1%	73.0%
Asian American	60.0%	83.3%
Hispanic	92.3%	68.8%
White	79.4%	82.0%
English Language Learner	88.9%	77.8%
Special Education	63.3%	67.3%
Low Income	71.5%	69.6%

AYP

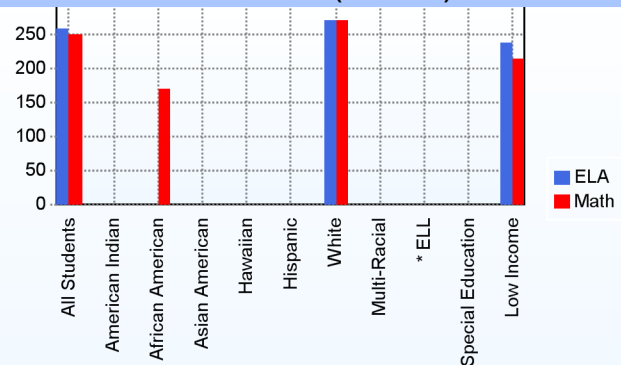
Only groups with greater than 40 students are reported

Original Model (2011-2012)



* English Language Learner

Growth Model (2011-2012)



* English Language Learner

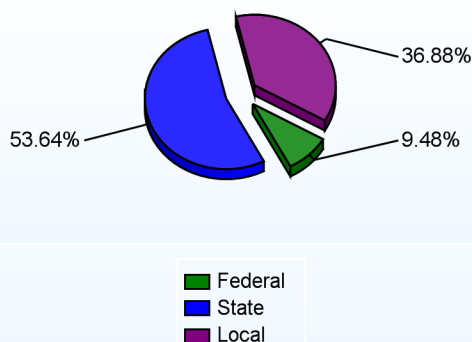
% Test Participation (2011-2012)

	<u>ELA</u>	<u>Math</u>	<u>ELA Goal</u>	<u>Math Goal</u>
All Students	100	100	95	95
American Indian	*	*	95	95
African American	100	100	95	95
Asian American	*	*	95	95
Hawaiian	*	*	95	95
Hispanic	*	*	95	95
White	100	100	95	95
Multi-Racial	*	*	95	95
English Language Learner	*	*	95	95
Special Education	*	*	95	95
Low Income	100	100	95	95

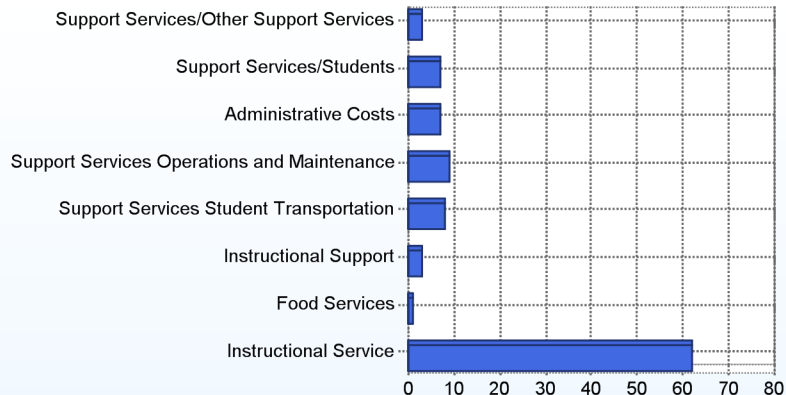
School Finances

District Expenditure per Pupil (2010-2011): \$16,064

District Sources of Revenue (2010-2011)



Percent District Allocation of Current Expenses by Category (2010-2011)



School Salary Allocation

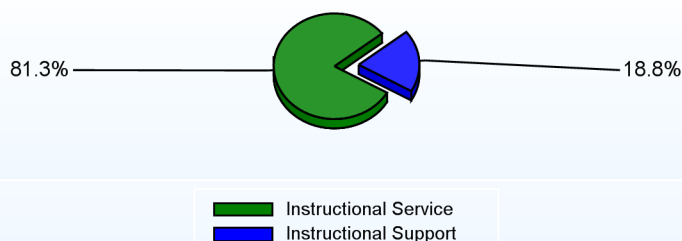
Instructional Service

	2012
Teachers	65.8%
Librarians	1.1%
Instructional Support	6.0%
Pupil Support	8.4%
Total	81.3%

Instructional Support

	2012
Administration	4.0%
Secretaries	3.1%
Food Services	1.9%
Maintenance	7.5%
Not Classified	2.3%
Total	18.8%

Instructional vs. Support (2011-2012)



For further information and detailed reports, visit

<http://profiles.doe.k12.de.us>

or contact your local school district office.

Glossary: <http://profiles.doe.k12.de.us/glossary.aspx>



Delaware Department of Education

John G. Townsend Building
401 Federal Street, Suite #2
Dover, Delaware, 19901 - 3639
Phone: (302) 735-4000

District: Cape Henlopen School District
Address: 520 duPont Avenue, Lewes DE 19958
Principal: Vivian Bush
AYP: Not Met

Telephone: (302) 645-7210
Web: cape.de.schoolwebpages.com/education/school/school.php?sectiondetailid=8363

School Demographics

Fall Enrollment		
	<u>2011</u>	<u>2012</u>
Pre-Kindergarten	60	50
Kindergarten	5	13
Grade 1	14	9
Grade 2	13	15
Grade 3	20	14
Grade 4	14	19
Grade 5	11	18
Grade 6	16	11
Grade 7	11	14
Grade 8	18	11
Grade 9	14	17
Grade 10	16	15
Grade 11	10	15
Grade 12	38	33
Total	260	254

Recently Arrived ELL Students	
	<u>2012</u>
Number of Students Not Tested on ELA Assessment	0

Enrollment by Race/Ethnicity		
	<u>2011</u>	<u>2012</u>
African American	14.6%	16.9%
American Indian	0.4%	0.4%
Asian	1.2%	0.8%
Hispanic/Latino	3.5%	4.7%
White	79.6%	76.4%
Multi-Racial	0.8%	0.8%

School Promotion by Grade	
	<u>2011</u>
Kindergarten	100.0%
Grade 1	100.0%
Grade 2	92.3%
Grade 3	100.0%
Grade 4	100.0%
Grade 5	100.0%
Grade 6	100.0%
Grade 7	100.0%
Grade 8	100.0%
Grade 9	100.0%
Grade 10	100.0%
Grade 11	100.0%
Grade 12	36.8%

Other Student Characteristics		
	<u>2011</u>	<u>2012</u>
English Language Learner	0.0%	0.0%
Low Income	52.0%	56.4%
Special Education	100.0%	100.0%
Enrolled for Full Year	30.0%	N/A

Student Achievement

Public School SAT Reasoning Test (Average Score) (2010-2011)				
	<u>School</u>	<u>District</u>	<u>State</u>	<u>National</u>
Math	330	490	477	514
Critical Reading	380	480	472	497
Writing	400	457	457	489
Total	1,110	1,427	1,406	1,500

Exemplary Programs

The Sussex Consortium is a comprehensive program, Pre-K through age 21, with a foundation in Applied Behavioral Analysis (ABA). Through specific methodology, the Sussex Consortium offers individualized instruction, preparing students for successful transitions toward a meaningful adult life. Schools from as far away as Japan and Australia have visited our program to see the model implemented.

Student - School Safety and Discipline

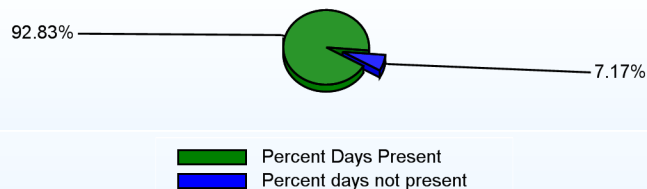
Number of Reported Offenses (2011-2012)

	<u>School</u>	<u>District</u>	<u>State</u>
School Crimes (Title 14, Delaware Code, §4112)	6	29	957
Department of Education (DOE) Offenses		187	10291
All School Safety Policy in Place	Yes		

Suspensions and Expulsions

	<u>2012</u>
September 30 Enrollment	254
District Percentage	10%
State Percentage	15%

Percent Days Present (2011-2012)



Our Staff

Number of Instructional Staff

	<u>2012</u>
Teachers	40
Pupil Support	22
Total	62

Staff by Race/Ethnicity

	<u>2012</u>
American Indian	0.0%
African American	1.6%
Asian American	0.0%
Hispanic	1.6%
White	96.8%

Staffing Ratios

	<u>2012</u>
Students Per Teacher	6
Students Per Administrator	127
Students Per Instructional Staff	2
Students Per Pupil Support Staff	12
School Staff Per Administrator	84

Staff Qualifications

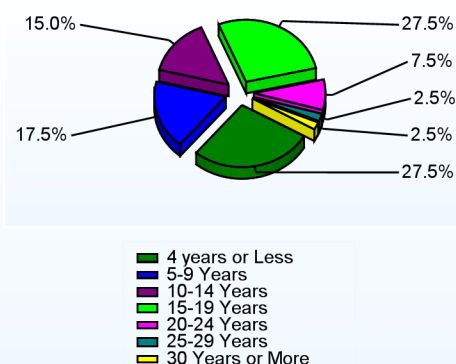
Percentage of Classes Taught by Highly Qualified Teachers (2011-2012)

	<u>Total Classes</u>	<u>% Highly Qualified</u>	<u>% Not Highly Qualified</u>
Elementary General	15	93.3%	6.7%

Education Level

	<u>2012</u>
Percent with Masters Degree and Above	34.1%
Percent Holding National Board for Professional Teaching Standards	0.0%

Years of Teaching Experience (2011-2012)



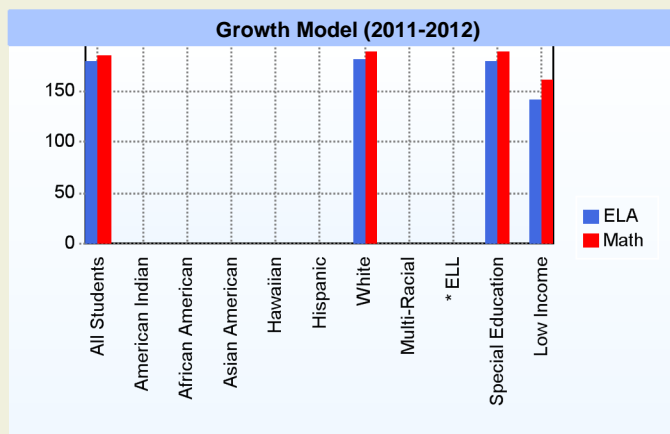
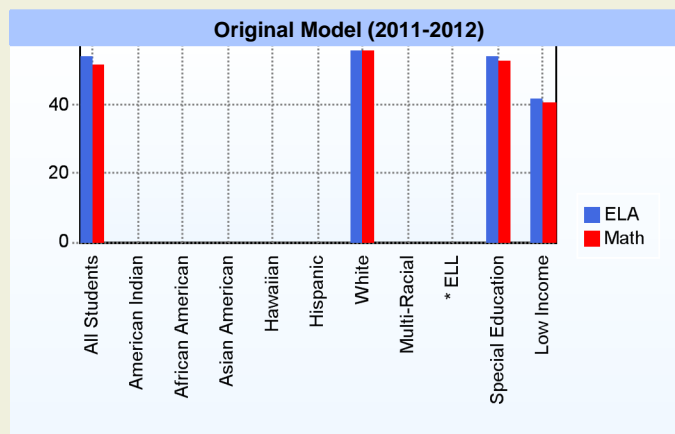
Curriculum Highlights

The Sussex Consortium has earned a variety of state and national accolades:

- In July of 2002, the Sussex Consortium was awarded the Wendy F. Miller Autism Society of America National Recognition Award as "Autism Program of the Year" at the ASA Conference in Indianapolis.
- In 2005 and 2010 the program was recognized by the Delaware Department of Education (DDOE) as a Commendable School. This is awarded to Delaware schools based on state and federal No Child Left Behind (NCLB) accountability data provided by annual assessments.
- From 2006 through 2009 and 2011, the Sussex Consortium received the state's highest accountability rating with a Superior by DDOE under the NCLB criteria.

AYP

Only groups with greater than 40 students are reported



* English Language Learner

* English Language Learner

% Test Participation (2011-2012)

	<u>ELA</u>	<u>Math</u>	<u>ELA Goal</u>	<u>Math Goal</u>
All Students	100	100	95	95
American Indian	*	*	95	95
African American	*	*	95	95
Asian American	*	*	95	95
Hawaiian	*	*	95	95
Hispanic	*	*	95	95
White	100	100	95	95
Multi-Racial	*	*	95	95
English Language Learner	*	*	95	95
Special Education	100	100	95	95
Low Income	*	*	95	95



Other

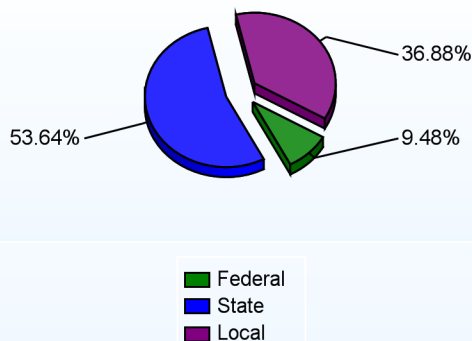
The Sussex Consortium has developed cooperative agreements with other Sussex County school districts and the rest of the Cape Henlopen schools for valuable mainstreaming purposes. The program also receives strong community support through a variety of area businesses and organizations. These partnerships assist us in providing opportunities in the classroom as well as offering community and vocational opportunities for our student body. A variety of vocational sites are available for students on and off student grounds. These opportunities are developed through the IEP process. Approximately 90 of our students work in over 30 different sites throughout the community in paid and volunteer positions.

At the beginning of the 2010-11 school year, the Sussex Consortium expanded its program in the Lewes School. Over 100 students are served at the building.

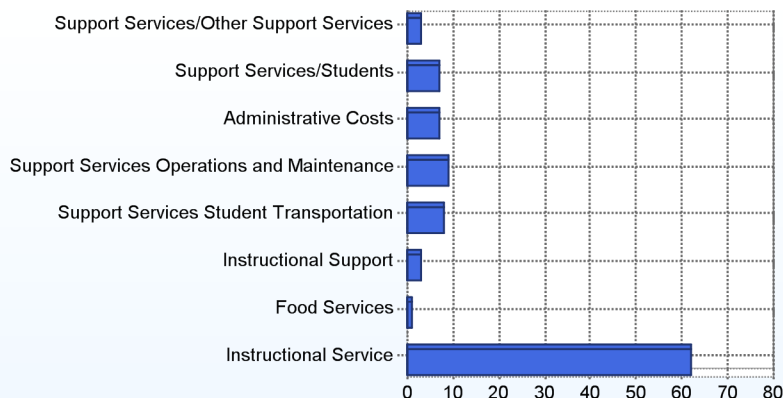
School Finances

District Expenditure per Pupil (2010-2011): \$16,064

District Sources of Revenue (2010-2011)



Percent District Allocation of Current Expenses by Category (2010-2011)



School Salary Allocation

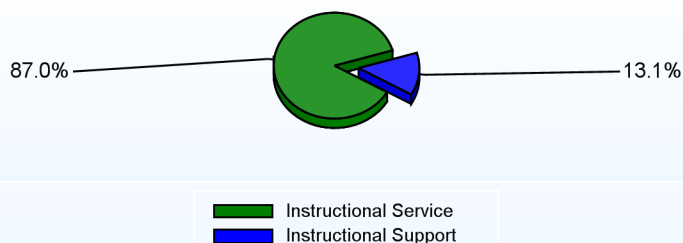
Instructional Service

	2012
Teachers	36.9%
Instructional Support	30.6%
Pupil Support	19.5%
Total	87.0%

Instructional Support

	2012
Administration	3.5%
Secretaries	8.4%
Maintenance	1.2%
Total	13.1%

Instructional vs. Support (2011-2012)



For further information and detailed reports, visit

<http://profiles.doe.k12.de.us>

or contact your local school district office.

Glossary: <http://profiles.doe.k12.de.us/glossary.aspx>



Delaware Department of Education

John G. Townsend Building
401 Federal Street, Suite #2
Dover, Delaware, 19901 - 3639
Phone: (302) 735-4000