



District: Caesar Rodney School District
Address: 7 Front Street, Wyoming DE 19934
School District Superintendent: Kevin Fitzgerald

Telephone: (302) 697-2173
Web: www.cr.k12.de.us

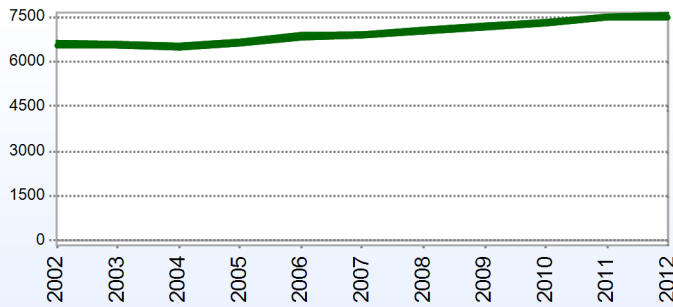
School Board Members

Kathleen Haynes, President
William Bush
Cheryl Precourt

David Henderson, Vice President
Melody Heavner
Kevin Fitzgerald, Executive Secretary

District Information

Enrollment History



Students Who Reside in the District

	2012
Number of Students in Public Schools (Non Charter)	7,632
Percent of Students in Public Schools (Non Charter)	100%

Fall Enrollment

	2011	2012
Pre-Kindergarten	80	94
Kindergarten	532	606
Grade 1	571	531
Grade 2	574	574
Grade 3	553	584
Grade 4	587	576
Grade 5	635	613
Grade 6	621	639
Grade 7	634	636
Grade 8	624	622
Grade 9	720	715
Grade 10	499	493
Grade 11	520	480
Grade 12	429	469
Total	7,579	7,632

Enrollment by Race/Ethnicity

	2009	2010
American Indian	0.5%	0.5%
African American	30.0%	29.7%
Asian American	3.5%	3.7%
Hispanic	5.0%	5.1%
White	61.0%	61.1%

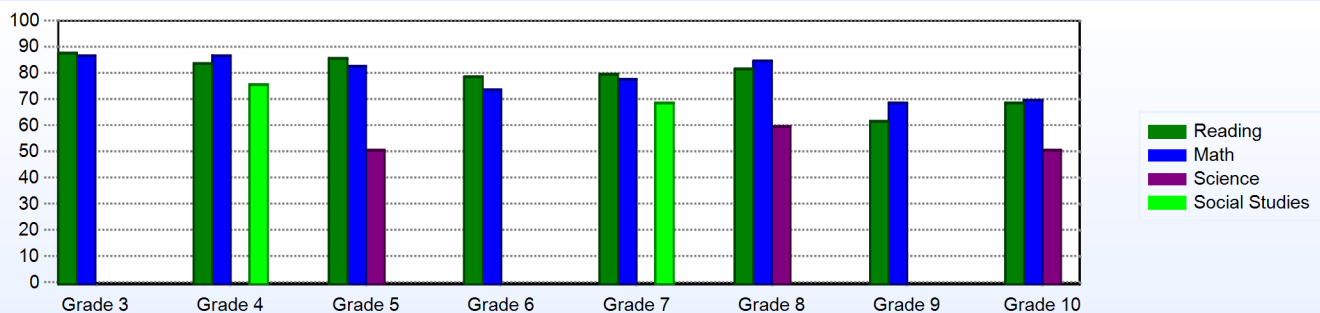
Other Student Characteristics

	2011	2012
English Language Learner	1.8%	1.8%
Low Income	41.1%	45.1%
Special Education	15.1%	14.4%
Enrolled for Full Year	91.4%	N/A%

Advanced Placement (AP)

	2011
Advanced Placement Courses	23
No. of Students Enrolled	300
No. of Exams Taken	434
Total No. of Exams Passed	247

Percentage of Students Meeting State Standards



District Staff

Number of Staff

	2012
Teachers	485
Librarians	11
Instructional Support	201
Pupil Support	61
Administrators	35
Secretaries	64
Food Service	67
Maintenance	68
Not Classified	1
Total	992

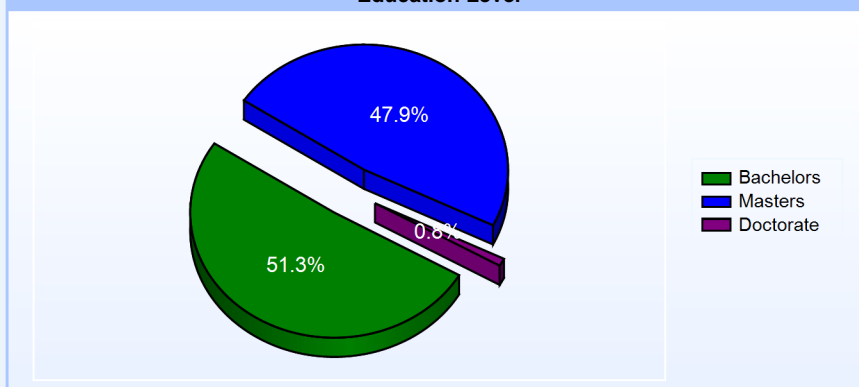
Percentage of Classes Taught by Highly Qualified Teachers

	Total Classes	% Highly Qualified
English	64	100.0%
Reading/ Language Arts	165	100.0%
Arts	162	100.0%
Foreign Languages	54	100.0%
Science	197	100.0%
Mathematics	204	100.0%
Geography	1	100.0%
Civics & Government	75	100.0%
Economics	1	100.0%
Social Studies	129	100.0%
History	43	100.0%
Elementary General	201	100.0%

School Choice

	2013
Number of Schools with Choice Students:	12
Number of Local Choice Students: (choice students from the same district)	311
Number of State Choice Students: (choice students from another district)	468
Number of Federal Choice Students: (NCLB School Under Improvement)	0
Number of Federal Choice Students: (NCLB Unsafe School)	0
Number of Federal Choice Students: (NCLB Victim of a Violent Felony)	0

Education Level



Graduation Rate - ESEA 4 Year Adjusted

	2010	2011
	ESEA	ESEA
All Students	76.0%	76.5%
American Indian	75.0%	50.0%
African American	72.5%	66.7%
Asian American	80.0%	91.7%
Hispanic	72.2%	73.1%
White	77.8%	81.3%
English Language Learner	76.9%	80.0%
Special Education	43.8%	49.5%
Low Income	60.3%	62.2%

Year End Position

	Year-End Balance	Expenditures	Percentage
2007		\$62,902,519.00	
2008	\$2,996,375.00	\$64,836,653.00	4.6%
2009	\$5,081,864.00	\$64,676,105.00	7.9%
2010	\$5,875,251.00	\$67,098,067.00	8.8%
2011	\$6,624,603.00	\$68,151,012.00	9.7%

Persistently Dangerous School

The school district has no "Persistently Dangerous Schools"

District Information

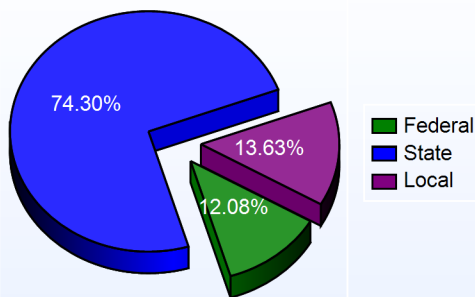
District DropOut Information						
	2009		2010		2011	
	Count	Percent	Count	Percent	Count	Percent
District	91	4.3%	89	4.2%	93	4.3%

Delaware Accountability		
<u>School Category</u>	<u>School</u>	<u>AYP</u>
Elementary	Brown (W. Reily) Elementary School	Met
	Frear (Allen) Elementary School	Met
	Simpson (W.B.) Elementary School	Met
	Star Hill Elementary School	Met
	Stokes (Nellie Hughes) Elementary School	Met
	Welch (Major George S.) Elementary School	Met
Other	McIlvaine (J. Ralph) Early Childhood Center	Met
	Charlton (John S.) School	Not Met
	Kent Elementary Intensive Learning Center	Met
Middle	Dover Air Force Base Middle School	Met
	Fifer (Fred) Middle School	Met
	Postlethwait (F. Niel) Middle School	Met
High School	Caesar Rodney High School	Met

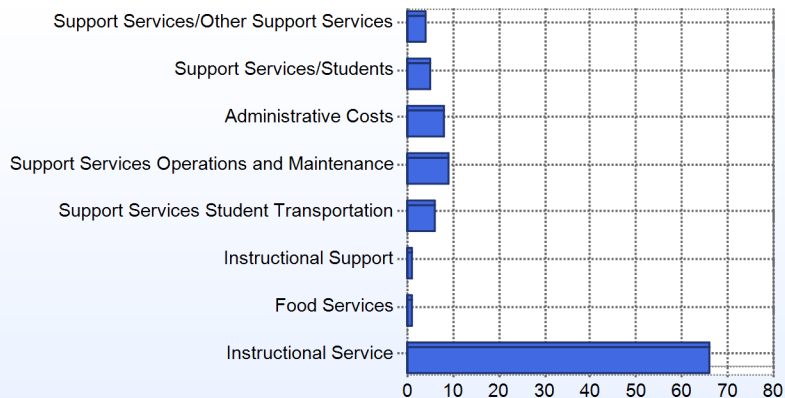
School Finances

District Expenditure per Pupil: \$9,762

District Sources of Revenue



Percent District Allocation of Current Expenses by Category



District Salary Allocation

Instructional Service

2012

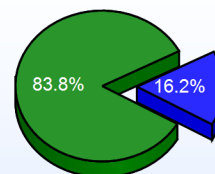
Teachers	61.9%
Librarians	1.6%
Instructional Support	14.2%
Pupil Support	6.1%
Total	83.8%

Instructional Support

2012

Administration	6.1%
Secretaries	2.7%
Food Services	2.7%
Maintenance	4.6%
Not Classified	0.1%
Total	16.2%

Instructional Vs Support



■ Instructional Service
■ Instructional Support

Scheduled Teacher Salaries

	Bachelor			Master		
	4 years or Less	15-19 Years	30 Years or More	4 years or Less	15-19 Years	30 Years or More
Scheduled Teacher Salaries	\$39,994	\$49,358	\$51,860	\$45,539	\$62,451	\$65,406

For further information and detailed reports, visit

<http://profiles.doe.k12.de.us>

or contact your local district office.



Delaware Department of Education

John G. Townsend Building
 401 Federal Street, Suite #2
 Dove, Delaware, 19901 - 3639
 Phone: (302) 735-4000

District: Caesar Rodney School District
Address: 950 Center Road, Dover DE 19901
Principal: Tara Faircloth
AYP: Met

Telephone: (302) 697-3279
Web: www.frear.cr.k12.de.us

School Demographics

Fall Enrollment		
	2011	2012
Grade 1	140	104
Grade 2	129	112
Grade 3	109	109
Grade 4	120	104
Grade 5	142	110
Total	640	539

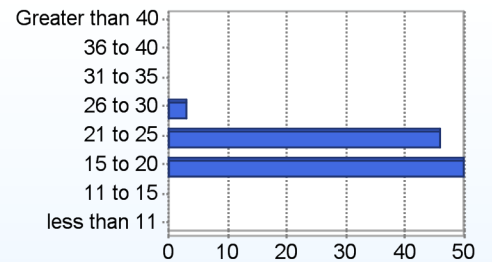
Enrollment by Race/Ethnicity		
	2011	2012
African American	26.3%	23.4%
American Indian	0.2%	0.9%
Asian	7.0%	6.9%
Hispanic/Latino	7.7%	6.9%
White	57.0%	57.3%
Multi-Racial	1.9%	4.6%

Other Student Characteristics		
	2011	2012
English Language Learner	7.0%	1.7%
Low Income	47.8%	47.1%
Special Education	9.5%	11.5%
Enrolled for Full Year	92.3%	N/A

Recently Arrived ELL Students	
	2012
Number of Students Not Tested on ELA Assessment	0

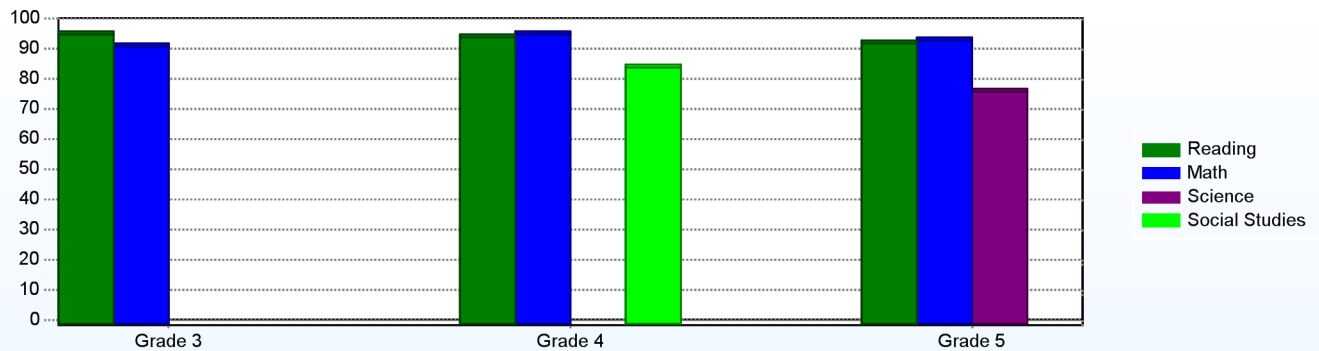
School Promotion by Grade	
	2011
Grade 1	95.7%
Grade 2	100.0%
Grade 3	100.0%
Grade 4	99.2%
Grade 5	100.0%

Class Size (Percentage by Range) (2011-2012)



Student Achievement

Percentage of Students Meeting State Standards (2011-2012)



Exemplary Programs

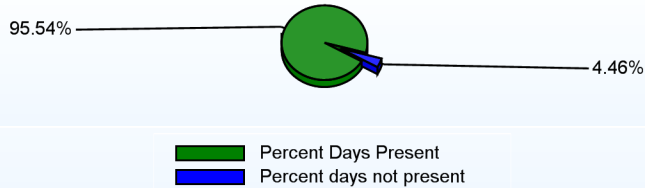
Allen Frear offers many programs to support growth in academics, behavior, and social development. We will continue to expand our PBS (Positive Behavior Support) program where students show their Rider Pride by following: Focus on Safety – Respect – Enthusiasm – Acceptance – Responsibility. To support students academically, teachers collect data and meet in professional learning communities (PLC) for 90 minutes per week to focus on individual academic needs. Instruction is differentiated to challenge our students on all levels. For our musical students, children have an opportunity to participate in the school chorus or the band. We also offer cup stacking and run club to students who choose to stay after school for fitness activities. This year, our related arts team will offer two, five week enrichment blocks for all of our students as well. In addition, we have implemented a DRIVE for success program to support students socially and academically. One Team, One Goal, No Limits!

Student - School Safety and Discipline

Number of Reported Offenses (2011-2012)

	<u>School</u>	<u>District</u>	<u>State</u>
School Crimes (Title 14, Delaware Code, §4112)	1	30	957
Department of Education (DOE) Offenses		389	10291
All School Safety Policy in Place	Yes		

Percent Days Present (2011-2012)



Suspensions and Expulsions

	<u>2012</u>
Number of Suspensions	37
Number of Expulsions	0
Count of Students Suspended/Expelled	23
September 30 Enrollment	539
Percent of Students Suspended/Expelled	4%
District Percentage	12%
State Percentage	15%

Our Staff

Number of Instructional Staff

	<u>2012</u>
Teachers	36
Librarians	1
Pupil Support	1
Total	38

Staff by Race/Ethnicity

	<u>2012</u>
American Indian	0.0%
African American	2.6%
Asian American	0.0%
Hispanic	0.0%
White	97.4%

Staffing Ratios

	<u>2012</u>
Students Per Teacher	15
Students Per Administrator	270
Students Per Instructional Staff	12
Students Per Pupil Support Staff	539
School Staff Per Administrator	29

Staff Qualifications

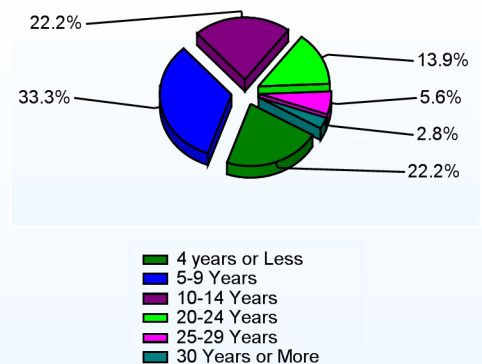
Percentage of Classes Taught by Highly Qualified Teachers (2011-2012)

	<u>Total Classes</u>	<u>% Highly Qualified</u>	<u>% Not Highly Qualified</u>
Reading/ Language Arts	3	100.0%	0.0%
Arts	3	100.0%	0.0%
Elementary General	26	100.0%	0.0%

Education Level

	<u>2012</u>
Percent with Masters Degree and Above	46.7%
Percent Holding National Board for Professional Teaching Standards	0.0%

Years of Teaching Experience (2011-2012)

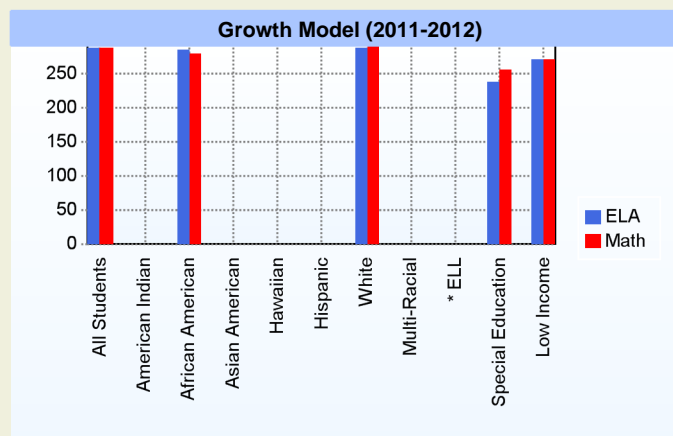
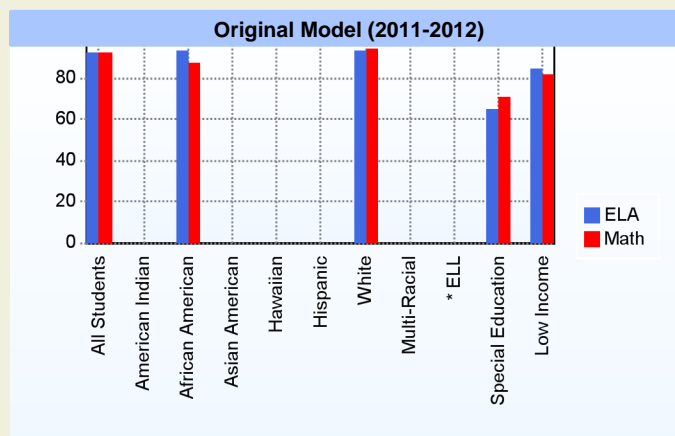


Curriculum Highlights

The Caesar Rodney School District established a curriculum development process which supports alignment to the existing Delaware State Standards and Grade Level Expectations. This process involves teacher and administrative input through a Curriculum Cabinet and Council process. The preparation of our students as life-long learners in a global community of the 21st century society is the unifying objective of this process. The curriculum not only identifies essential knowledge and skills, but also supports students' development in problem solving and gathering and using resources that will enable them to succeed. Each content area (English/Language Arts, Mathematics, Science, Social Studies, Visual and Performing Arts, World Languages, Physical Education, Health, and Family and Consumer Sciences) also has an Assessment of Learning and Assessment for Learning component to support students in the learning process and to determine specific performance relative to the State Standards.

AYP

Only groups with greater than 40 students are reported



* English Language Learner

* English Language Learner

% Test Participation (2011-2012)

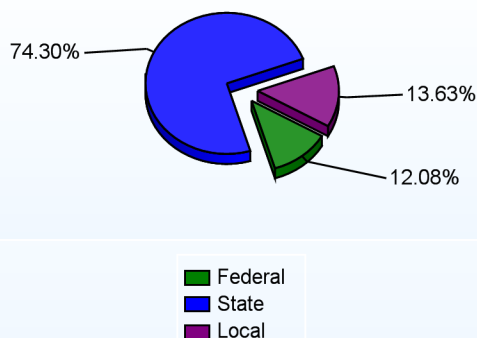
	<u>ELA</u>	<u>Math</u>	<u>ELA Goal</u>	<u>Math Goal</u>
All Students	100	100	95	95
American Indian	*	*	95	95
African American	99	99	95	95
Asian American	*	*	95	95
Hawaiian	*	*	95	95
Hispanic	*	*	95	95
White	100	100	95	95
Multi-Racial	*	*	95	95
English Language Learner	*	*	95	95
Special Education	100	100	95	95
Low Income	100	100	95	95



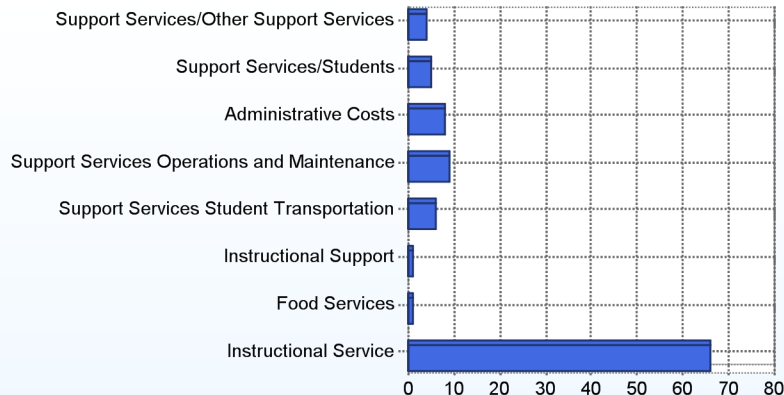
School Finances

District Expenditure per Pupil (2010-2011): \$9,762

District Sources of Revenue (2010-2011)



Percent District Allocation of Current Expenses by Category (2010-2011)



School Salary Allocation

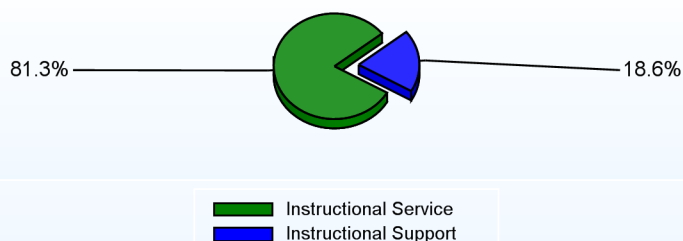
Instructional Service

	2012
Teachers	69.4%
Librarians	1.4%
Instructional Support	8.6%
Pupil Support	1.9%
Total	81.3%

Instructional Support

	2012
Administration	6.6%
Secretaries	2.6%
Food Services	4.1%
Maintenance	5.3%
Total	18.6%

Instructional vs. Support (2011-2012)



For further information and detailed reports, visit

<http://profiles.doe.k12.de.us>

or contact your local school district office.

Glossary: <http://profiles.doe.k12.de.us/glossary.aspx>



Delaware Department of Education

John G. Townsend Building
401 Federal Street, Suite #2
Dover, Delaware, 19901 - 3639
Phone: (302) 735-4000

District: Caesar Rodney School District

Telephone: (302) 335-5039

Address: Post Office Box 258, 11 East Walnut, Magnolia DE 19962

Web: www.mci.cr.k12.de.us/

Principal: Sherry Kijowski

AYP: Met

School Demographics

Fall Enrollment		
	2011	2012
Pre-Kindergarten	22	
Kindergarten	440	497
Total	462	497

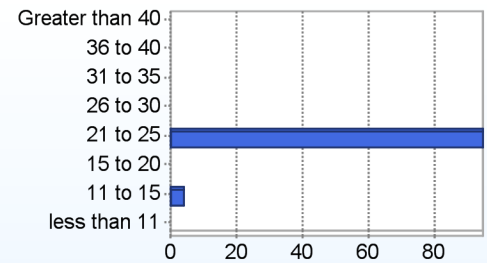
Recently Arrived ELL Students	
	2012
Number of Students Not Tested on ELA Assessment	0

Enrollment by Race/Ethnicity		
	2011	2012
African American	22.6%	22.9%
American Indian	2.2%	
Asian	3.0%	3.6%
Hawaiian	0.2%	
Hispanic/Latino	10.2%	6.2%
White	52.6%	61.6%
Multi-Racial	9.1%	5.6%

School Promotion by Grade	
	2011
Kindergarten	98.9%

Other Student Characteristics		
	2011	2012
English Language Learner	1.8%	0.0%
Low Income	49.1%	47.5%
Special Education	9.8%	9.5%
Enrolled for Full Year	93.2%	N/A

Class Size (Percentage by Range) (2011-2012)



Exemplary Programs

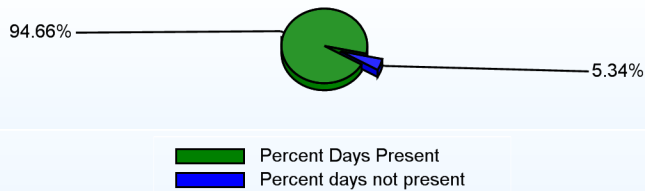
The J. Ralph McIlvaine Early Childhood Center (MECC) is home to the district's "Littlest Riders!" McIlvaine offers several exemplary programs for its school families that enhance the learning process. The school hosts monthly evening "Parent Parties" that provide hands-on, engaging activities connected to the school's curriculum. Additionally, the school nurse coordinates the annual Health and Safety fair every spring in conjunction with the Wesley College nursing department. It should also be noted that all classes participate in the same school-wide field trips, guest speakers, and special events. McIlvaine's daily academic program also provides vast opportunities for students to learn, grow, and succeed. Students meet with the teacher daily for small group reading instruction and all classrooms provide extensive journaling opportunities in math, ELA, and the other content areas. Instruction at McIlvaine focuses on Literacy, Critical thinking, and Problem Solving.

Student - School Safety and Discipline

Number of Reported Offenses (2011-2012)

	<u>School</u>	<u>District</u>	<u>State</u>
School Crimes (Title 14, Delaware Code, §4112)		30	957
Department of Education (DOE) Offenses	1	389	10291
All School Safety Policy in Place	Yes		

Percent Days Present (2011-2012)



Suspensions and Expulsions

	<u>2012</u>
Number of Suspensions	9
Number of Expulsions	0
Count of Students Suspended/Expelled	6
September 30 Enrollment	497
Percent of Students Suspended/Expelled	1%
District Percentage	12%
State Percentage	15%

Our Staff

Number of Instructional Staff

	<u>2012</u>
Teachers	28
Librarians	1
Pupil Support	2
Total	31

Staff by Race/Ethnicity

	<u>2012</u>
American Indian	0.0%
African American	3.2%
Asian American	0.0%
Hispanic	0.0%
White	96.8%

Staffing Ratios

	<u>2012</u>
Students Per Teacher	18
Students Per Administrator	497
Students Per Instructional Staff	12
Students Per Pupil Support Staff	249
School Staff Per Administrator	55

Staff Qualifications

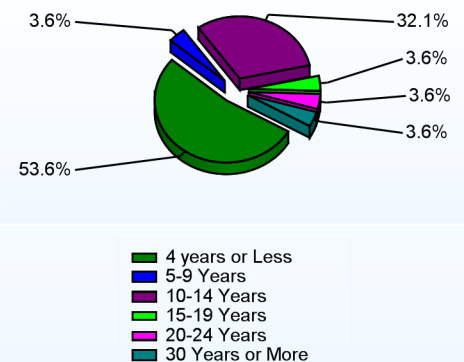
Percentage of Classes Taught by Highly Qualified Teachers (2011-2012)

	<u>Total Classes</u>	<u>% Highly Qualified</u>	<u>% Not Highly Qualified</u>
Reading/ Language Arts	3	100.0%	0.0%
Elementary General	21	100.0%	0.0%

Education Level

	<u>2012</u>
Percent with Masters Degree and Above	40.9%
Percent Holding National Board for Professional Teaching Standards	3.4%

Years of Teaching Experience (2011-2012)



Curriculum Highlights

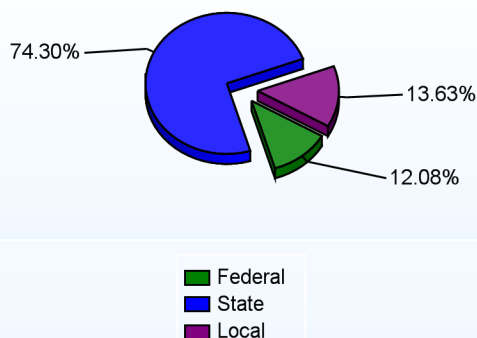
The Caesar Rodney School District has established a curriculum development process which supports alignment to the existing Delaware State Standards and Grade Level Expectations. This process involves teacher and administrative input through a Curriculum Cabinet and Council process. The preparation of our students as life-long learners in a global community of the 21st century society is the unifying objective of this process. The curriculum not only identifies essential knowledge and skills, but also supports students' development in problem solving and gathering and using resources that will enable them to succeed. Each content area (English/Language Arts, Mathematics, Science, Social Studies, Visual and Performing Arts, World Languages, Physical Education, Health, and Family and Consumer Sciences) also has an Assessment of Learning and Assessment for Learning component to support students in the learning process.



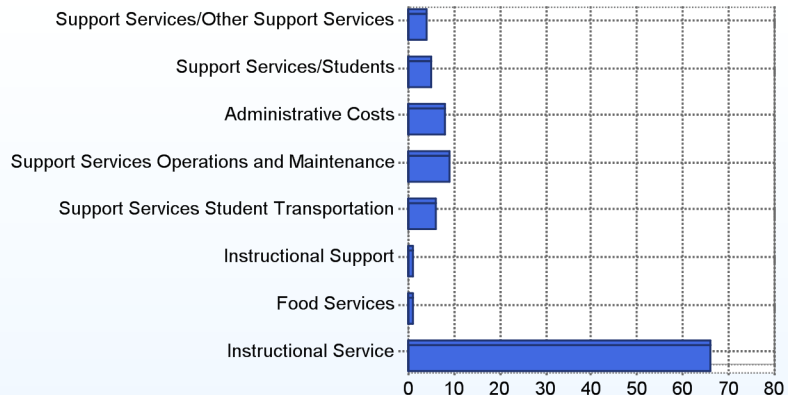
School Finances

District Expenditure per Pupil (2010-2011): \$9,762

District Sources of Revenue (2010-2011)



Percent District Allocation of Current Expenses by Category (2010-2011)



School Salary Allocation

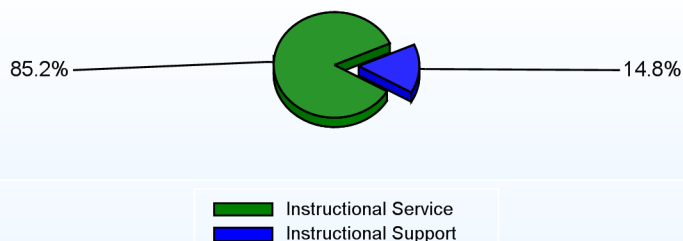
Instructional Service

	2012
Teachers	60.8%
Librarians	2.1%
Instructional Support	16.6%
Pupil Support	5.7%
Total	85.2%

Instructional Support

	2012
Administration	3.7%
Secretaries	2.8%
Food Services	3.6%
Maintenance	4.7%
Total	14.8%

Instructional vs. Support (2011-2012)



For further information and detailed reports, visit

<http://profiles.doe.k12.de.us>

or contact your local school district office.

Glossary: <http://profiles.doe.k12.de.us/glossary.aspx>



Delaware Department of Education

John G. Townsend Building
401 Federal Street, Suite #2
Dover, Delaware, 19901 - 3639
Phone: (302) 735-4000

District: Caesar Rodney School District
Address: 3100 Hawthorne Drive, Dover DE 19901
Principal: Alane Brown
AYP: Met

Telephone: (302) 674-9080
Web: www.welch.cr.k12.de.us

School Demographics

Fall Enrollment		
	2011	2012
Pre-Kindergarten	1	
Kindergarten	75	89
Grade 1	75	79
Grade 2	86	71
Grade 3	80	75
Grade 4	72	81
Grade 5	74	59
Total	463	454

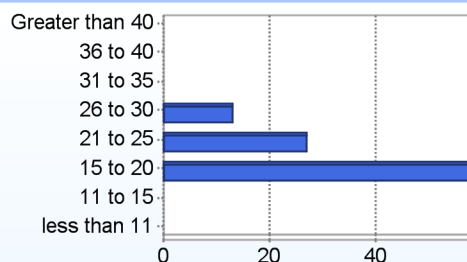
Enrollment by Race/Ethnicity		
	2011	2012
African American	17.1%	18.3%
American Indian	0.9%	0.4%
Asian	5.0%	4.0%
Hispanic/Latino	9.7%	11.5%
White	66.1%	63.2%
Multi-Racial	1.3%	2.6%

School Promotion by Grade	
	2011
Kindergarten	100.0%
Grade 1	100.0%
Grade 2	100.0%
Grade 3	98.8%
Grade 4	100.0%
Grade 5	100.0%

Other Student Characteristics		
	2011	2012
English Language Learner	2.2%	1.3%
Low Income	25.3%	32.6%
Special Education	6.7%	4.6%
Enrolled for Full Year	86.4%	N/A

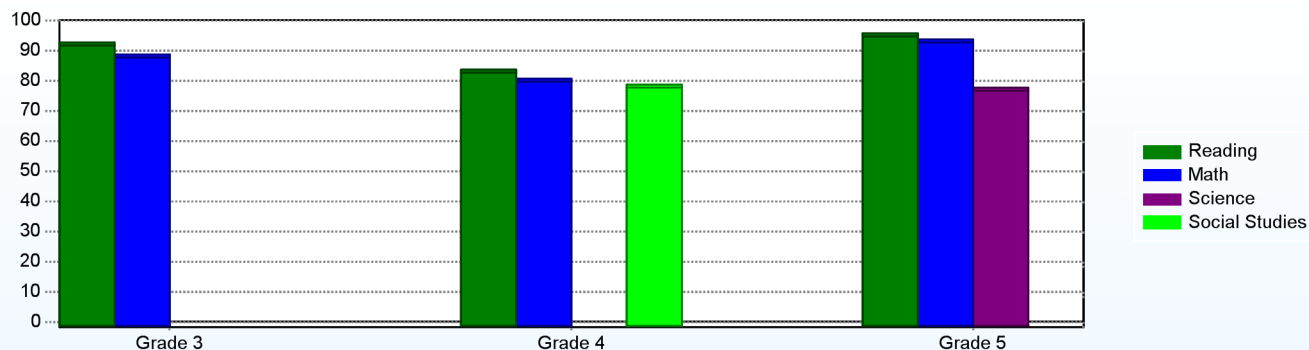
Recently Arrived ELL Students	
	2012
Number of Students Not Tested on ELA Assessment	0

Class Size (Percentage by Range) (2011-2012)



Student Achievement

Percentage of Students Meeting State Standards (2011-2012)



Exemplary Programs

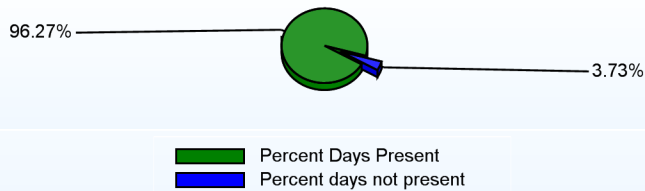
Our school mission statement is the driving force behind the design of all of our school programs. We believe that all programs that we incorporate into the fabric of our school must be exemplary in order to prepare students for a successful, productive, and purposeful life. Within these programs, we must promote caring attitudes throughout the school community and provide quality educational opportunities to meet the needs of all students. To promote caring attitudes throughout the school community, the FISH Philosophy is practiced, and the Welch Affirmation is recited daily. The affirmation emphasizes the importance of addressing others with respect and kindness; solving problems in a peaceful way; focusing on learning and doing one's best; and being proud as an individual, as well as a member of the group. The FISH Philosophy promotes bringing a positive, light-hearted attitude daily to work, while creating a climate of happiness, well-being and concern for one another.

Student - School Safety and Discipline

Number of Reported Offenses (2011-2012)

	<u>School</u>	<u>District</u>	<u>State</u>
School Crimes (Title 14, Delaware Code, §4112)		30	957
Department of Education (DOE) Offenses	9	389	10291
All School Safety Policy in Place	Yes		

Percent Days Present (2011-2012)



Suspensions and Expulsions

	<u>2012</u>
Number of Suspensions	12
Number of Expulsions	0
Count of Students Suspended/Expelled	10
September 30 Enrollment	454
Percent of Students Suspended/Expelled	2%
District Percentage	12%
State Percentage	15%

Our Staff

Number of Instructional Staff

	<u>2012</u>
Teachers	27
Librarians	1
Pupil Support	2
Total	30

Staff by Race/Ethnicity

	<u>2012</u>
American Indian	0.0%
African American	10.0%
Asian American	0.0%
Hispanic	0.0%
White	90.0%

Staffing Ratios

	<u>2012</u>
Students Per Teacher	17
Students Per Administrator	227
Students Per Instructional Staff	12
Students Per Pupil Support Staff	227
School Staff Per Administrator	22

Staff Qualifications

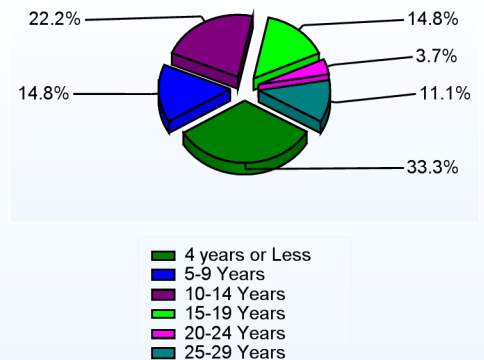
Percentage of Classes Taught by Highly Qualified Teachers (2011-2012)

	<u>Total Classes</u>	<u>% Highly Qualified</u>	<u>% Not Highly Qualified</u>
Reading/ Language Arts	1	100.0%	0.0%
Arts	2	100.0%	0.0%
Elementary General	22	100.0%	0.0%

Education Level

	<u>2012</u>
Percent with Masters Degree and Above	41.0%
Percent Holding National Board for Professional Teaching Standards	0.0%

Years of Teaching Experience (2011-2012)

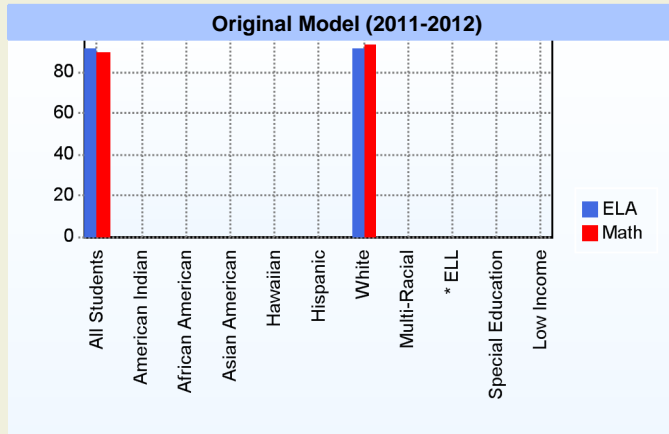


Curriculum Highlights

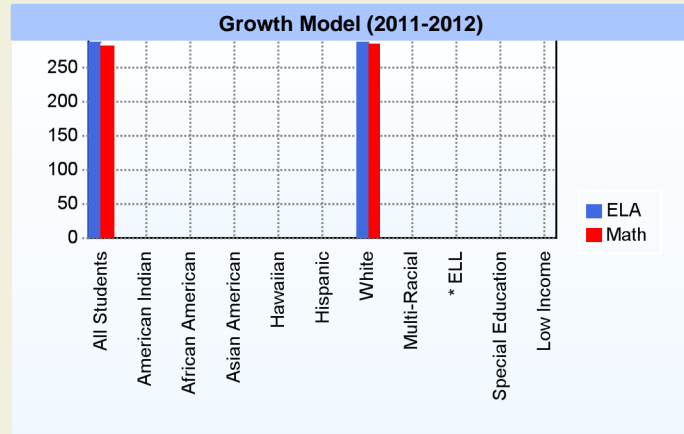
The District has established a curriculum development process which supports alignment to the existing Delaware State Standards and Grade Level Expectations. This process involves teacher and administrative input through a Curriculum Cabinet and Council process. The preparation of our students as life-long learners in a global community of the 21st century society is the unifying objective of this process. The curriculum not only identifies essential knowledge and skills, but also supports students' development in problem solving and gathering and using resources that will enable them to succeed. Each content area (English/Language Arts, Mathematics, Science, Social Studies, Visual and Performing Arts, World Languages, Physical Education, Health, and Family and Consumer Sciences) also has an Assessment of Learning and Assessment for Learning component to support students in the learning process and to determine specific performance relative to the State Standards.

AYP

Only groups with greater than 40 students are reported



* English Language Learner



* English Language Learner

% Test Participation (2011-2012)

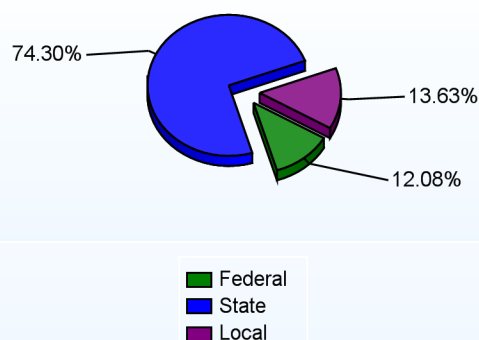
	<u>ELA</u>	<u>Math</u>	<u>ELA Goal</u>	<u>Math Goal</u>
All Students	100	100	95	95
American Indian	*	*	95	95
African American	100	100	95	95
Asian American	*	*	95	95
Hawaiian	*	*	95	95
Hispanic	*	*	95	95
White	100	100	95	95
Multi-Racial	*	*	95	95
English Language Learner	*	*	95	95
Special Education	*	*	95	95
Low Income	*	*	95	95



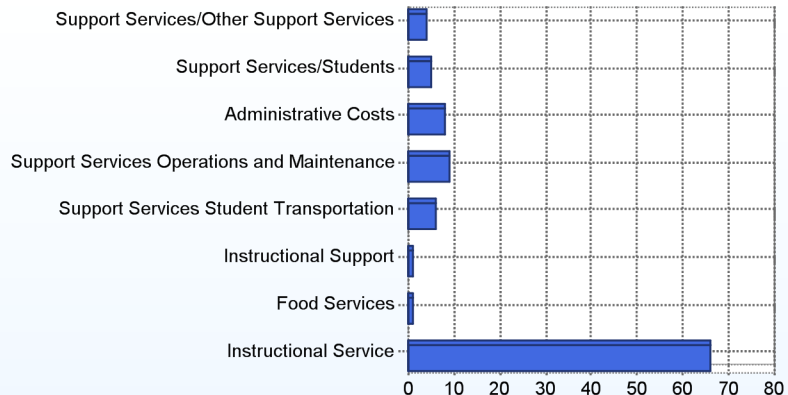
School Finances

District Expenditure per Pupil (2010-2011): \$9,762

District Sources of Revenue (2010-2011)



Percent District Allocation of Current Expenses by Category (2010-2011)



School Salary Allocation

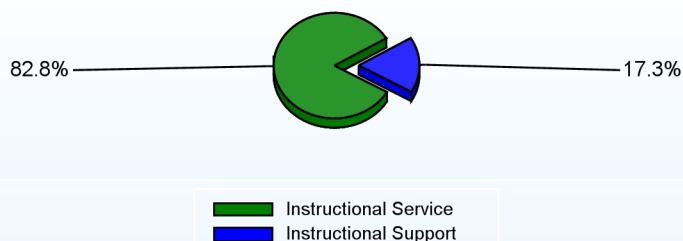
Instructional Service

	2012
Teachers	62.2%
Librarians	2.6%
Instructional Support	12.4%
Pupil Support	5.6%
Total	82.8%

Instructional Support

	2012
Administration	8.8%
Secretaries	3.2%
Maintenance	5.3%
Total	17.3%

Instructional vs. Support (2011-2012)



For further information and detailed reports, visit

<http://profiles.doe.k12.de.us>

or contact your local school district office.

Glossary: <http://profiles.doe.k12.de.us/glossary.aspx>



Delaware Department of Education

John G. Townsend Building
401 Federal Street, Suite #2
Dover, Delaware, 19901 - 3639
Phone: (302) 735-4000

District: Caesar Rodney School District
Address: 5 Old North Road, Camden DE 19934
Principal: Michael Kijowski
AYP: Met

Telephone: (302) 697-3504
Web:

School Demographics

Fall Enrollment		
	2011	2012
Kindergarten	3	4
Grade 1	1	3
Grade 2	8	6
Grade 3	7	7
Grade 4	12	7
Grade 5	13	12
Total	44	39

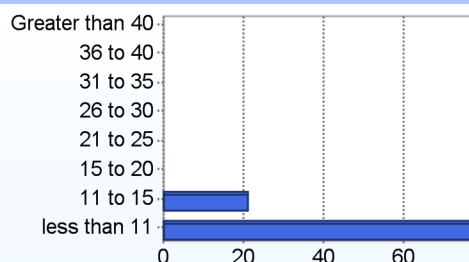
Recently Arrived ELL Students	
	2012
Number of Students Not Tested on ELA Assessment	0

Enrollment by Race/Ethnicity		
	2011	2012
African American	52.3%	51.3%
Asian	2.3%	
Hispanic/Latino	4.5%	5.1%
White	36.4%	35.9%
Multi-Racial	4.5%	7.7%

School Promotion by Grade	
	2011
Kindergarten	66.7%
Grade 1	100.0%
Grade 2	100.0%
Grade 3	100.0%
Grade 4	100.0%
Grade 5	100.0%

Other Student Characteristics		
	2011	2012
English Language Learner	4.5%	5.1%
Low Income	88.6%	89.7%
Special Education	100.0%	100.0%
Enrolled for Full Year	88.6%	N/A

Class Size (Percentage by Range) (2011-2012)

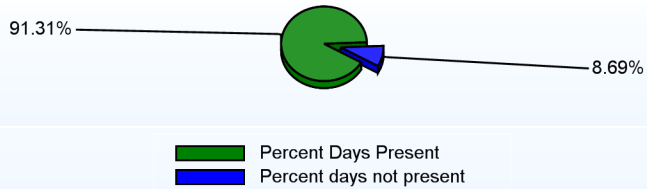


Student - School Safety and Discipline

Number of Reported Offenses (2011-2012)

	<u>School</u>	<u>District</u>	<u>State</u>
School Crimes (Title 14, Delaware Code, §4112)		30	957
Department of Education (DOE) Offenses	24	389	10291
All School Safety Policy in Place	Yes		

Percent Days Present (2011-2012)



Suspensions and Expulsions

	<u>2012</u>
Number of Suspensions	47
Number of Expulsions	0
Count of Students Suspended/Expelled	23
September 30 Enrollment	39
Percent of Students Suspended/Expelled	59%
District Percentage	12%
State Percentage	15%

Our Staff

Number of Instructional Staff

	<u>2012</u>
Teachers	5
Pupil Support	1
Total	6

Staff by Race/Ethnicity

	<u>2012</u>
American Indian	0.0%
African American	16.7%
Asian American	0.0%
Hispanic	0.0%
White	83.3%

Staffing Ratios

	<u>2012</u>
Students Per Teacher	8
Students Per Administrator	0
Students Per Instructional Staff	3
Students Per Pupil Support Staff	39
School Staff Per Administrator	0

Staff Qualifications

Percentage of Classes Taught by Highly Qualified Teachers (2011-2012)

	<u>Total Classes</u>	<u>% Highly Qualified</u>	<u>% Not Highly Qualified</u>
Arts	2	100.0%	0.0%
Elementary General	5	100.0%	0.0%

Education Level

	<u>2012</u>
Percent with Masters Degree and Above	33.3%
Percent Holding National Board for Professional Teaching Standards	0.0%

Years of Teaching Experience (2011-2012)



Curriculum Highlights

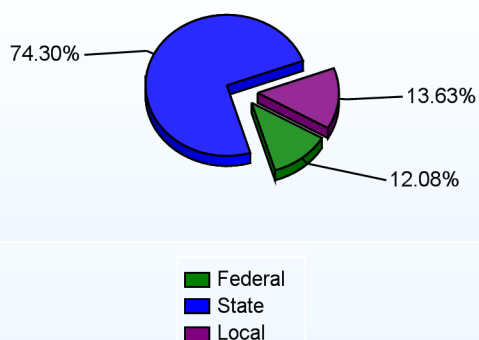
The District has established a curriculum development process which supports alignment to the existing Delaware State Standards and Grade Level Expectations. This process involves teacher and administrative input through a Curriculum Cabinet and Council process. The preparation of our students as life-long learners in a global community of the 21st century society is the unifying objective of this process. The curriculum not only identifies essential knowledge and skills, but also supports students' development in problem solving and gathering and using resources that will enable them to succeed. Each content area (English/Language Arts, Mathematics, Science, Social Studies, Visual and Performing Arts, World Languages, Physical Education, Health, and Family and Consumer Sciences) also has an Assessment of Learning and Assessment for Learning component to support students in the learning process and to determine specific performance relative to the State Standards.



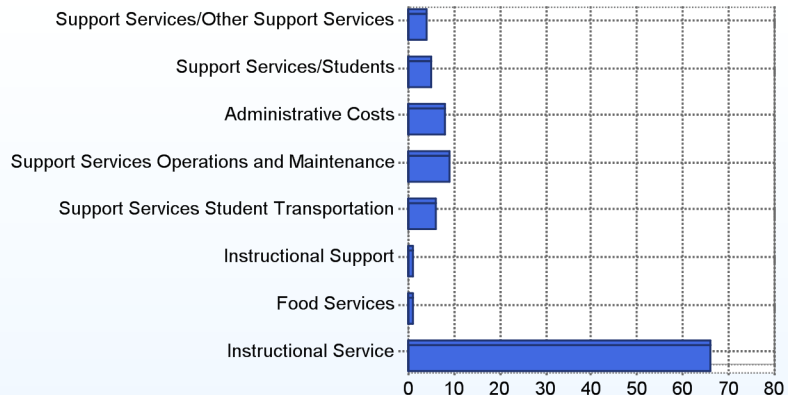
School Finances

District Expenditure per Pupil (2010-2011): \$9,762

District Sources of Revenue (2010-2011)



Percent District Allocation of Current Expenses by Category (2010-2011)

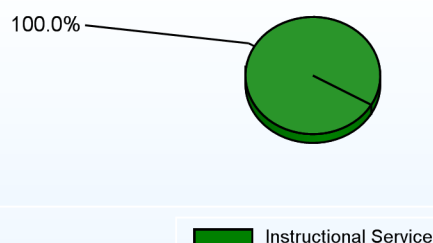


School Salary Allocation

Instructional Service

2012	
Teachers	40.8%
Instructional Support	48.6%
Pupil Support	10.6%
Total	100.0%

Instructional vs. Support (2011-2012)



For further information and detailed reports, visit

<http://profiles.doe.k12.de.us>

or contact your local school district office.

Glossary: <http://profiles.doe.k12.de.us/glossary.aspx>



Delaware Department of Education

John G. Townsend Building
401 Federal Street, Suite #2
Dover, Delaware, 19901 - 3639
Phone: (302) 735-4000

District: Caesar Rodney School District
Address: 3874 Upper King Road, Dover DE 19904
Principal: Nicole Jones
AYP: Met

Telephone: (302) 697-3205
Web: www.stokes.cr.k12.de.us

School Demographics

Fall Enrollment		
	2011	2012
Pre-Kindergarten		70
Grade 1	85	89
Grade 2	95	76
Grade 3	78	99
Grade 4	83	74
Grade 5	98	78
Total	439	486

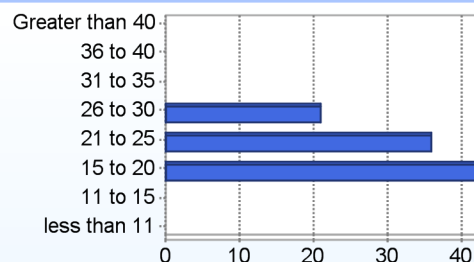
Recently Arrived ELL Students		
	2011	2012
Number of Students Not Tested on ELA Assessment		0

Enrollment by Race/Ethnicity		
	2011	2012
African American	29.0%	27.4%
American Indian	0.9%	0.4%
Asian	3.2%	3.9%
Hispanic/Latino	3.9%	4.1%
White	62.6%	61.3%
Multi-Racial	0.5%	2.9%

School Promotion by Grade	
	2011
Kindergarten	100.0%
Grade 1	97.6%
Grade 2	100.0%
Grade 3	100.0%
Grade 4	98.8%
Grade 5	100.0%

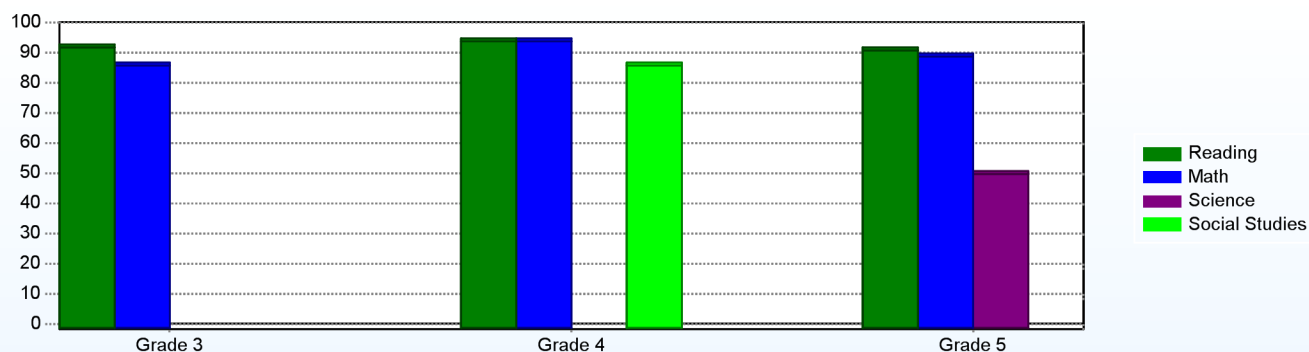
Other Student Characteristics		
	2011	2012
English Language Learner	0.5%	1.0%
Low Income	52.6%	56.5%
Special Education	11.4%	10.3%
Enrolled for Full Year	92.7%	N/A

Class Size (Percentage by Range) (2011-2012)



Student Achievement

Percentage of Students Meeting State Standards (2011-2012)



Exemplary Programs

Nellie Stokes Elementary offers a wide array of exemplary programs to support and compliment our student population. Student creativity is showcased through chorus, band, and WNHS morning news crew. Academic excellence is supported by our Odyssey of the Mind competition, a summer reading program, academic informational events, and our newly revamped TAG initiative. The importance of community is taught through the various activities of our Student Council, including annual donations to the SPCA and drives to support or armed forces. Family events, particularly our Father-Daughter Dance, generate much excitement and create lifelong memories. Our counselor, in conjunction with the Food Bank of Delaware, provides resources for our community members who may be in need.

Student - School Safety and Discipline

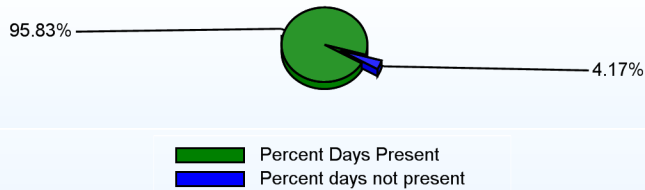
Number of Reported Offenses (2011-2012)

	<u>School</u>	<u>District</u>	<u>State</u>
School Crimes (Title 14, Delaware Code, §4112)	1	30	957
Department of Education (DOE) Offenses		389	10291
All School Safety Policy in Place	Yes		

Suspensions and Expulsions

	<u>2012</u>
Number of Suspensions	11
Number of Expulsions	0
Count of Students Suspended/Expelled	8
September 30 Enrollment	486
Percent of Students Suspended/Expelled	2%
District Percentage	12%
State Percentage	15%

Percent Days Present (2011-2012)



Our Staff

Number of Instructional Staff

	<u>2012</u>
Teachers	34
Librarians	1
Pupil Support	2
Total	37

Staff by Race/Ethnicity

	<u>2012</u>
American Indian	0.0%
African American	8.1%
Asian American	0.0%
Hispanic	0.0%
White	91.9%

Staffing Ratios

	<u>2012</u>
Students Per Teacher	14
Students Per Administrator	243
Students Per Instructional Staff	12
Students Per Pupil Support Staff	243
School Staff Per Administrator	28

Staff Qualifications

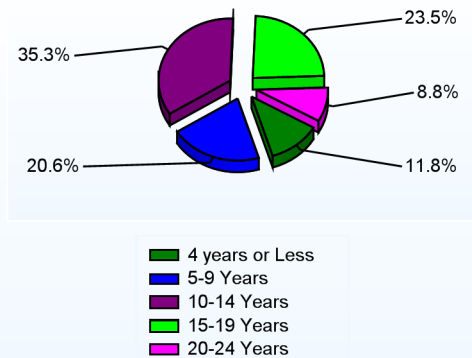
Percentage of Classes Taught by Highly Qualified Teachers (2011-2012)

	<u>Total Classes</u>	<u>% Highly Qualified</u>	<u>% Not Highly Qualified</u>
Reading/ Language Arts	1	100.0%	0.0%
Arts	3	100.0%	0.0%
Elementary General	20	100.0%	0.0%

Education Level

	<u>2012</u>
Percent with Masters Degree and Above	54.5%
Percent Holding National Board for Professional Teaching Standards	0.0%

Years of Teaching Experience (2011-2012)

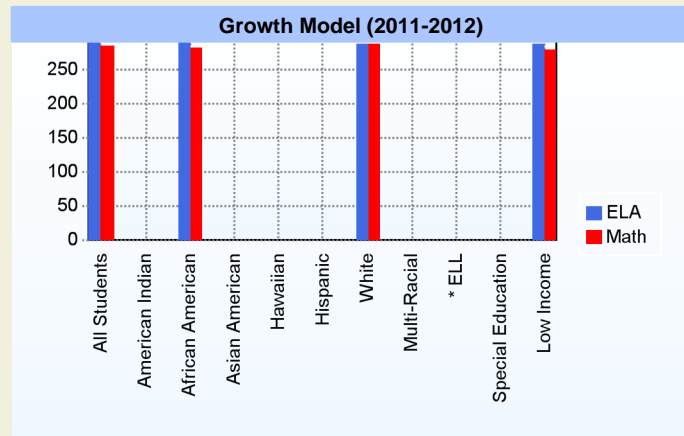
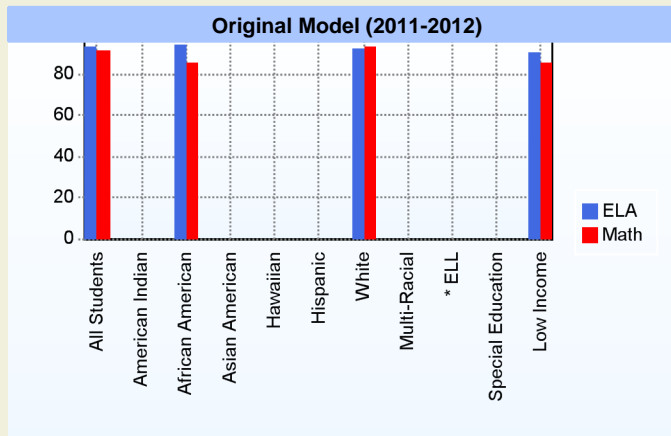


Curriculum Highlights

The District has established a curriculum development process which supports alignment to the existing Delaware State Standards and Grade Level Expectations. This process involves teacher and administrative input through a Curriculum Cabinet and Council process. The preparation of our students as life-long learners in a global community of the 21st century society is the unifying objective of this process. The curriculum not only identifies essential knowledge and skills, but also supports students' development in problem solving and gathering and using resources that will enable them to succeed. Each content area (English/Language Arts, Mathematics, Science, Social Studies, Visual and Performing Arts, World Languages, Physical Education, Health, and Family and Consumer Sciences) also has an Assessment of Learning and Assessment for Learning component to support students in the learning process and to determine specific performance relative to the State Standards.

AYP

Only groups with greater than 40 students are reported



* English Language Learner

* English Language Learner

% Test Participation (2011-2012)

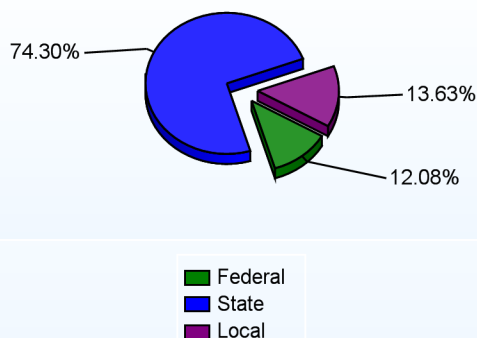
	<u>ELA</u>	<u>Math</u>	<u>ELA Goal</u>	<u>Math Goal</u>
All Students	100	100	95	95
American Indian	*	*	95	95
African American	100	100	95	95
Asian American	*	*	95	95
Hawaiian	*	*	95	95
Hispanic	*	*	95	95
White	100	100	95	95
Multi-Racial	*	*	95	95
English Language Learner	*	*	95	95
Special Education	*	*	95	95
Low Income	100	100	95	95



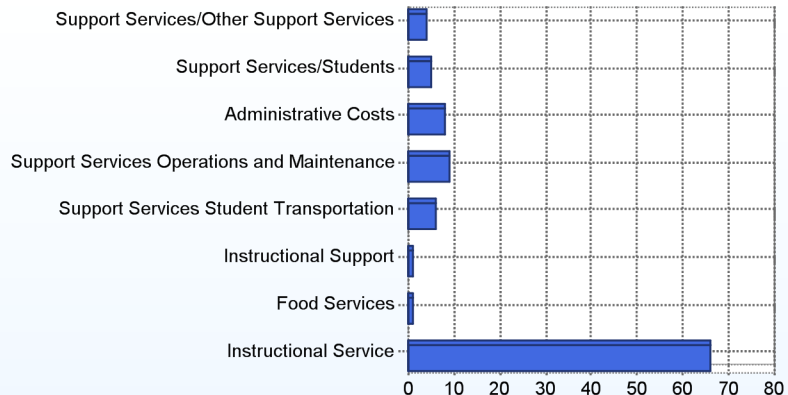
School Finances

District Expenditure per Pupil (2010-2011): \$9,762

District Sources of Revenue (2010-2011)



Percent District Allocation of Current Expenses by Category (2010-2011)



School Salary Allocation

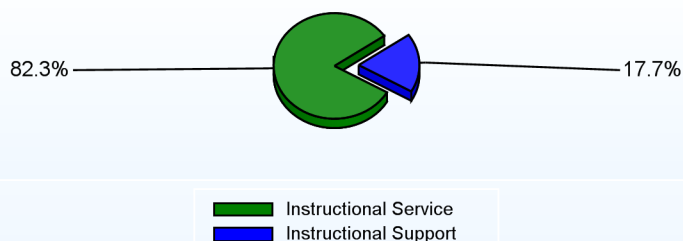
Instructional Service

	2012
Teachers	68.8%
Librarians	2.4%
Instructional Support	6.9%
Pupil Support	4.2%
Total	82.3%

Instructional Support

	2012
Administration	7.1%
Secretaries	2.5%
Food Services	3.2%
Maintenance	4.9%
Total	17.7%

Instructional vs. Support (2011-2012)



For further information and detailed reports, visit

<http://profiles.doe.k12.de.us>

or contact your local school district office.

Glossary: <http://profiles.doe.k12.de.us/glossary.aspx>



Delaware Department of Education

John G. Townsend Building
401 Federal Street, Suite #2
Dover, Delaware, 19901 - 3639
Phone: (302) 735-4000

District: Caesar Rodney School District

Telephone: (302) 697-6117

Address: 594 Voshells Mill/Star Hill Road, Dover DE 19901

Web: www.starhill.cr.k12.de.us

Principal: Chester Cox

AYP: Met

School Demographics

Fall Enrollment		
	2011	2012
Grade 1	75	102
Grade 2	91	93
Grade 3	86	108
Grade 4	110	99
Grade 5	115	126
Total	477	528

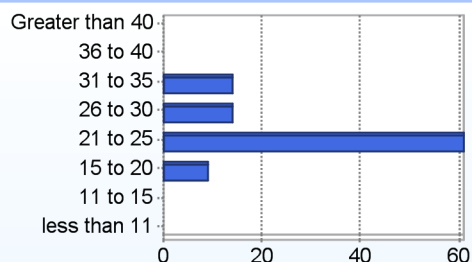
Enrollment by Race/Ethnicity		
	2011	2012
African American	31.0%	28.8%
American Indian	0.8%	1.1%
Asian	3.1%	3.0%
Hispanic/Latino	5.5%	8.3%
White	59.5%	57.6%
Multi-Racial		1.1%

Other Student Characteristics		
	2011	2012
English Language Learner	1.9%	6.4%
Low Income	32.3%	37.1%
Special Education	8.0%	8.5%
Enrolled for Full Year	95.6%	N/A

Recently Arrived ELL Students	
	2012
Number of Students Not Tested on ELA Assessment	6

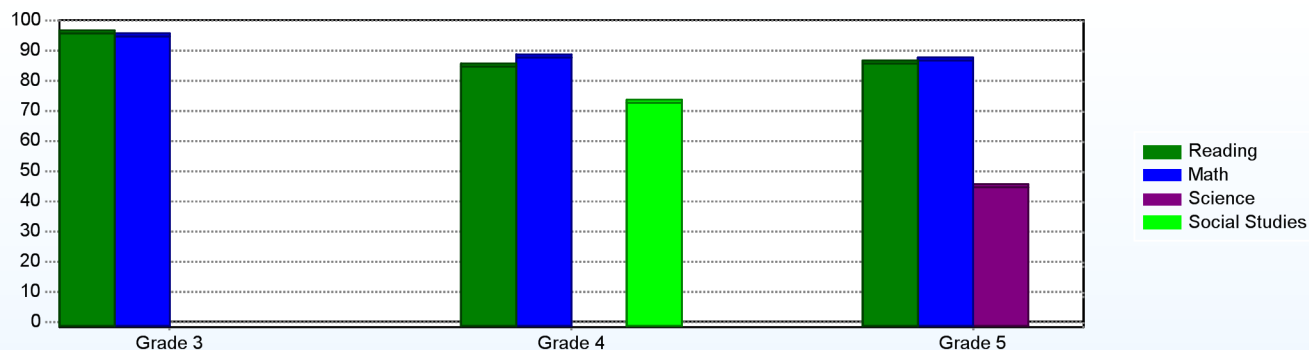
School Promotion by Grade	
	2011
Grade 1	100.0%
Grade 2	98.9%
Grade 3	100.0%
Grade 4	100.0%
Grade 5	100.0%

Class Size (Percentage by Range) (2011-2012)



Student Achievement

Percentage of Students Meeting State Standards (2011-2012)



Exemplary Programs

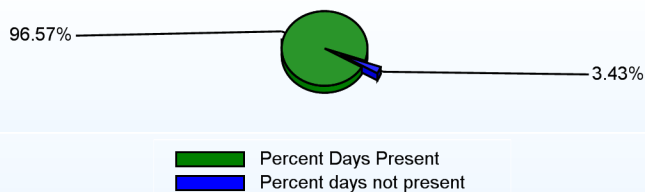
At Star Hill, we believe in each one of our students and we have a vested interest in them. During the past two school years, we implemented our S.T.A.R.S. program which was designed to acknowledge our students who choose to make the right decisions in school. When students have difficulty with a subject area, we reteach the content, or find another way to reach that child. Managing students is no different. If a child makes a wrong choice, it is our obligation to teach that child to make an appropriate decision the next time he/she is in the same situation. We also encourage students to maintain a healthy lifestyle through our walking program in which students can walk an eighth of a mile track on our playground. Throughout the year, we reward students who reach various mileage milestones by presenting them with walking awards. At the end of the year, the top walkers of the school receive a new pair of sneakers!

Student - School Safety and Discipline

Number of Reported Offenses (2011-2012)

	<u>School</u>	<u>District</u>	<u>State</u>
School Crimes (Title 14, Delaware Code, §4112)		30	957
Department of Education (DOE) Offenses	2	389	10291
All School Safety Policy in Place	Yes		

Percent Days Present (2011-2012)



Suspensions and Expulsions

	<u>2012</u>
Number of Suspensions	22
Number of Expulsions	0
Count of Students Suspended/Expelled	8
September 30 Enrollment	528
Percent of Students Suspended/Expelled	2%
District Percentage	12%
State Percentage	15%

Our Staff

Number of Instructional Staff

	<u>2012</u>
Teachers	31
Librarians	1
Pupil Support	2
Total	34

Staff by Race/Ethnicity

	<u>2012</u>
American Indian	0.0%
African American	2.9%
Asian American	0.0%
Hispanic	5.9%
White	91.2%

Staffing Ratios

	<u>2012</u>
Students Per Teacher	17
Students Per Administrator	264
Students Per Instructional Staff	14
Students Per Pupil Support Staff	264
School Staff Per Administrator	25

Staff Qualifications

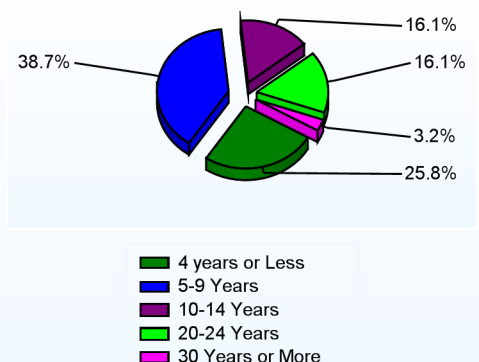
Percentage of Classes Taught by Highly Qualified Teachers (2011-2012)

	<u>Total Classes</u>	<u>% Highly Qualified</u>	<u>% Not Highly Qualified</u>
Reading/ Language Arts	1	100.0%	0.0%
Arts	2	100.0%	0.0%
Elementary General	22	100.0%	0.0%

Education Level

	<u>2012</u>
Percent with Masters Degree and Above	47.5%
Percent Holding National Board for Professional Teaching Standards	0.0%

Years of Teaching Experience (2011-2012)

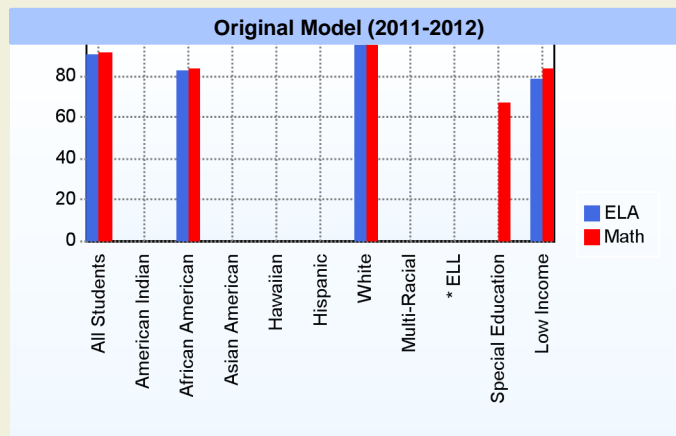


Curriculum Highlights

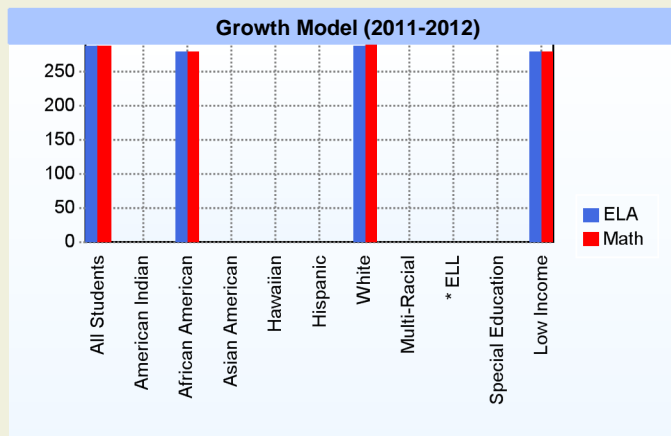
The Caesar Rodney School District has established a curriculum development process which supports alignment to the existing Delaware State Standards and Grade Level Expectations. This process involves teacher and administrative input through a Curriculum Cabinet and Council process. The preparation of our students as life-long learners in a global community of the 21st century society is the unifying objective of this process. The curriculum not only identifies essential knowledge and skills, but also supports students' development in problem solving and gathering and using resources that will enable them to succeed. Each content area (English/Language Arts, Mathematics, Science, Social Studies, Visual and Performing Arts, World Languages, Physical Education, Health, and Family and Consumer Sciences) also has an Assessment of Learning and Assessment for Learning component to support students in the learning process and to determine specific performance relative to the standards.

AYP

Only groups with greater than 40 students are reported



* English Language Learner



* English Language Learner

% Test Participation (2011-2012)

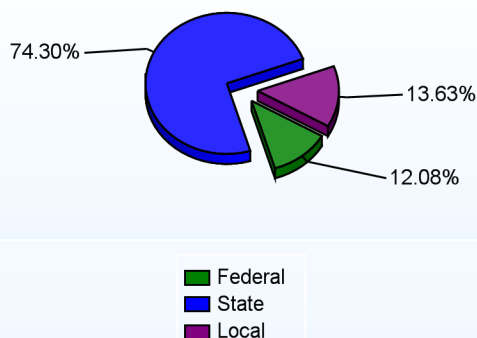
	<u>ELA</u>	<u>Math</u>	<u>ELA Goal</u>	<u>Math Goal</u>
All Students	100	100	95	95
American Indian	*	*	95	95
African American	100	100	95	95
Asian American	*	*	95	95
Hawaiian	*	*	95	95
Hispanic	*	*	95	95
White	100	100	95	95
Multi-Racial	*	*	95	95
English Language Learner	*	*	95	95
Special Education	*	100	95	95
Low Income	100	100	95	95



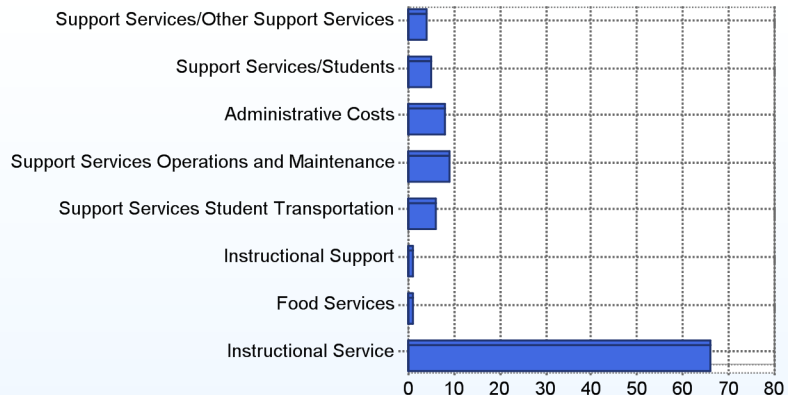
School Finances

District Expenditure per Pupil (2010-2011): \$9,762

District Sources of Revenue (2010-2011)



Percent District Allocation of Current Expenses by Category (2010-2011)



School Salary Allocation

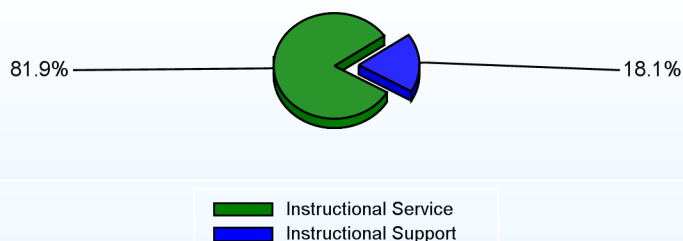
Instructional Service

	2012
Teachers	65.9%
Librarians	2.9%
Instructional Support	8.3%
Pupil Support	4.8%
Total	81.9%

Instructional Support

	2012
Administration	7.5%
Secretaries	3.0%
Food Services	3.6%
Maintenance	4.0%
Total	18.1%

Instructional vs. Support (2011-2012)



For further information and detailed reports, visit

<http://profiles.doe.k12.de.us>

or contact your local school district office.

Glossary: <http://profiles.doe.k12.de.us/glossary.aspx>



Delaware Department of Education

John G. Townsend Building
401 Federal Street, Suite #2
Dover, Delaware, 19901 - 3639
Phone: (302) 735-4000

District: Caesar Rodney School District
Address: 5 Old North Road, Camden DE 19934
Principal: Michael Kijowski
AYP: Met

Telephone: (302) 697-3207
Web: www.simpson.cr.k12.de.us

School Demographics

Fall Enrollment		
	2011	2012
Grade 1	89	79
Grade 2	71	105
Grade 3	88	86
Grade 4	92	96
Grade 5	80	116
Total	420	482

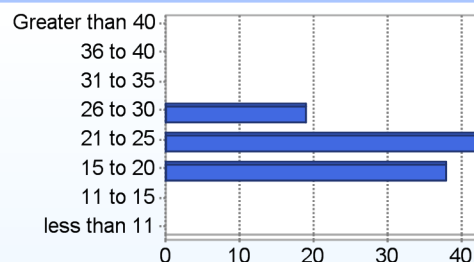
Enrollment by Race/Ethnicity		
	2011	2012
African American	15.7%	15.6%
American Indian	0.5%	0.6%
Asian	2.1%	2.1%
Hispanic/Latino	5.0%	8.1%
White	69.0%	67.4%
Multi-Racial	7.6%	6.2%

Other Student Characteristics		
	2011	2012
English Language Learner	0.5%	1.0%
Low Income	41.2%	47.3%
Special Education	7.6%	8.7%
Enrolled for Full Year	95.2%	N/A

Recently Arrived ELL Students	
	2012
Number of Students Not Tested on ELA Assessment	0

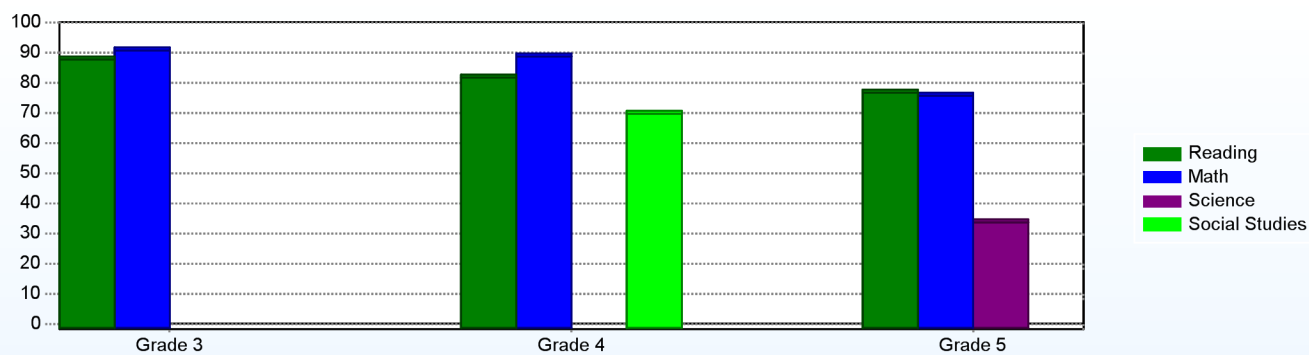
School Promotion by Grade	
	2011
Grade 1	100.0%
Grade 2	100.0%
Grade 3	100.0%
Grade 4	100.0%
Grade 5	100.0%

Class Size (Percentage by Range) (2011-2012)



Student Achievement

Percentage of Students Meeting State Standards (2011-2012)



Exemplary Programs

Extra Curricular Activities:

We offer various extra-curricular activities at W.B. Simpson Elementary. Some of these activities include: Student Council, Math League, Chorus, Uni-Cycle, Safety Patrol and Recycling Club. These activities are open to all students at the appropriate grade levels.

Co-Curricular Activities:

At W.B. Simpson Elementary, a variety of co-curricular activities are offered. Some of these are: Spelling Bee, Odyssey of the Mind, Read Across America, Reading Challenge, and Instrumental Band. These activities are open to all students at the appropriate grade levels.

Student - School Safety and Discipline

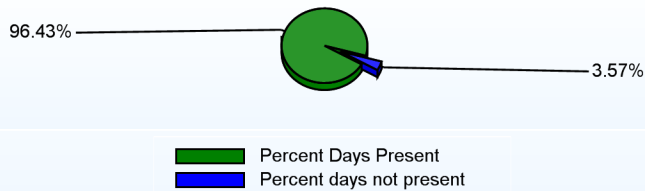
Number of Reported Offenses (2011-2012)

	<u>School</u>	<u>District</u>	<u>State</u>
School Crimes (Title 14, Delaware Code, §4112)		30	957
Department of Education (DOE) Offenses	18	389	10291
All School Safety Policy in Place	Yes		

Suspensions and Expulsions

	<u>2012</u>
Number of Suspensions	42
Number of Expulsions	0
Count of Students Suspended/Expelled	23
September 30 Enrollment	482
Percent of Students Suspended/Expelled	5%
District Percentage	12%
State Percentage	15%

Percent Days Present (2011-2012)



Our Staff

Number of Instructional Staff

	<u>2012</u>
Teachers	28
Librarians	1
Pupil Support	3
Total	32

Staff by Race/Ethnicity

	<u>2012</u>
American Indian	0.0%
African American	0.0%
Asian American	3.1%
Hispanic	6.3%
White	90.6%

Staffing Ratios

	<u>2012</u>
Students Per Teacher	17
Students Per Administrator	241
Students Per Instructional Staff	15
Students Per Pupil Support Staff	193
School Staff Per Administrator	24

Staff Qualifications

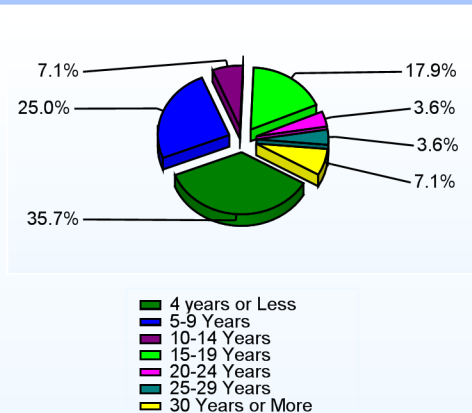
Percentage of Classes Taught by Highly Qualified Teachers (2011-2012)

	<u>Total Classes</u>	<u>% Highly Qualified</u>	<u>% Not Highly Qualified</u>
Reading/ Language Arts	1	100.0%	0.0%
Arts	3	100.0%	0.0%
Elementary General	21	100.0%	0.0%

Education Level

	<u>2012</u>
Percent with Masters Degree and Above	52.8%
Percent Holding National Board for Professional Teaching Standards	6.9%

Years of Teaching Experience (2011-2012)

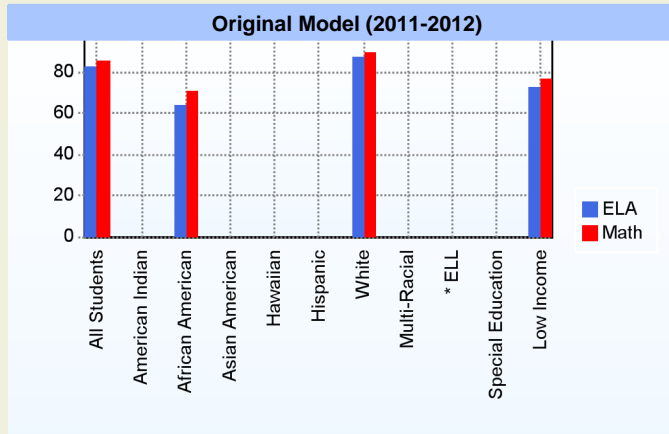


Curriculum Highlights

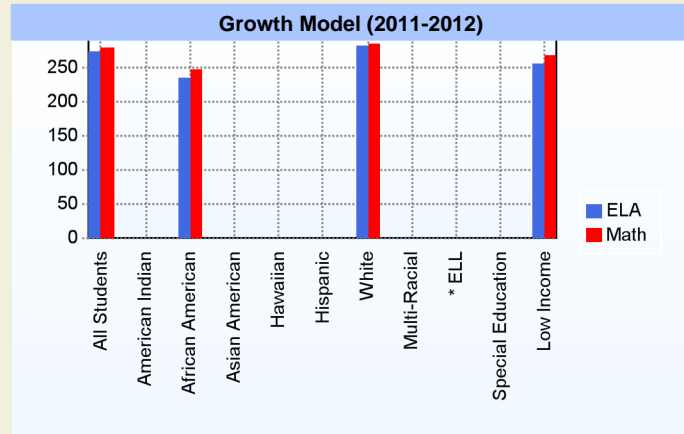
The District has established a curriculum development process which supports alignment to the existing Delaware State Standards and Grade Level Expectations. This process involves teacher and administrative input through a Curriculum Cabinet and Council process. The preparation of our students as life-long learners in a global community of the 21st century society is the unifying objective of this process. The curriculum not only identifies essential knowledge and skills, but also supports students' development in problem solving and gathering and using resources that will enable them to succeed. Each content area (English/Language Arts, Mathematics, Science, Social Studies, Visual and Performing Arts, World Languages, Physical Education, Health, and Family and Consumer Sciences) also has an Assessment of Learning and Assessment for Learning component to support students in the learning process and to determine specific performance relative to the State Standards.

AYP

Only groups with greater than 40 students are reported



* English Language Learner



* English Language Learner

% Test Participation (2011-2012)

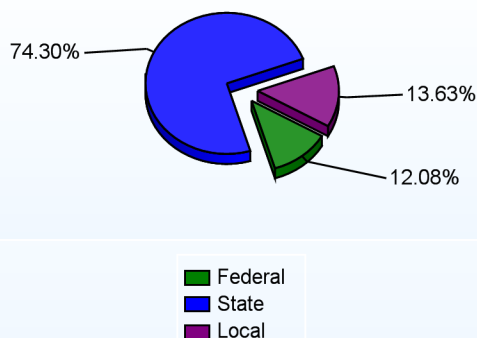
	<u>ELA</u>	<u>Math</u>	<u>ELA Goal</u>	<u>Math Goal</u>
All Students	100	100	95	95
American Indian	*	*	95	95
African American	100	100	95	95
Asian American	*	*	95	95
Hawaiian	*	*	95	95
Hispanic	*	*	95	95
White	100	100	95	95
Multi-Racial	*	*	95	95
English Language Learner	*	*	95	95
Special Education	*	*	95	95
Low Income	100	100	95	95



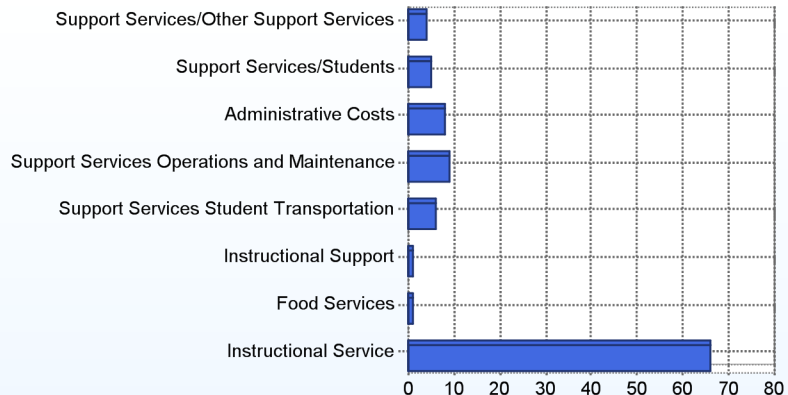
School Finances

District Expenditure per Pupil (2010-2011): \$9,762

District Sources of Revenue (2010-2011)



Percent District Allocation of Current Expenses by Category (2010-2011)



School Salary Allocation

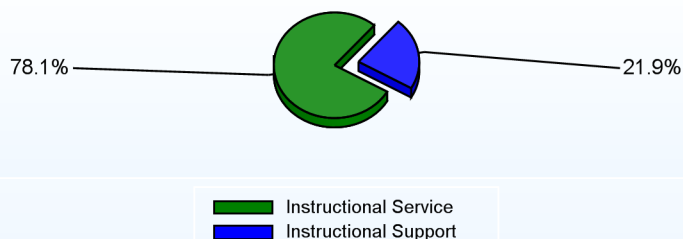
Instructional Service

	2012
Teachers	62.5%
Librarians	3.3%
Instructional Support	6.3%
Pupil Support	6.0%
Total	78.1%

Instructional Support

	2012
Administration	8.4%
Secretaries	3.2%
Food Services	3.8%
Maintenance	6.5%
Total	21.9%

Instructional vs. Support (2011-2012)



For further information and detailed reports, visit

<http://profiles.doe.k12.de.us>

or contact your local school district office.

Glossary: <http://profiles.doe.k12.de.us/glossary.aspx>



Delaware Department of Education

John G. Townsend Building
401 Federal Street, Suite #2
Dover, Delaware, 19901 - 3639
Phone: (302) 735-4000

District: Caesar Rodney School District
Address: 2841 South State Street, Camden DE 19934
Principal: Jason Payne
AYP: Met

Telephone: (302) 698-8410
Web: www.pms.cr.k12.de.us

School Demographics

Fall Enrollment		
	2011	2012
Grade 6	223	274
Grade 7	277	257
Grade 8	234	278
Total	734	809

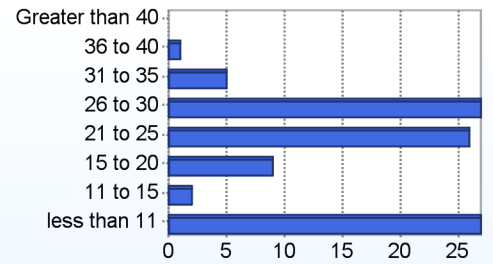
Recently Arrived ELL Students	
	2012
Number of Students Not Tested on ELA Assessment	2

Enrollment by Race/Ethnicity		
	2011	2012
African American	27.7%	27.3%
American Indian	0.8%	0.6%
Asian	3.0%	4.4%
Hawaiian		0.1%
Hispanic/Latino	5.9%	5.4%
White	62.7%	61.7%
Multi-Racial		0.4%

School Promotion by Grade	
	2011
Grade 6	100.0%
Grade 7	97.5%
Grade 8	100.0%

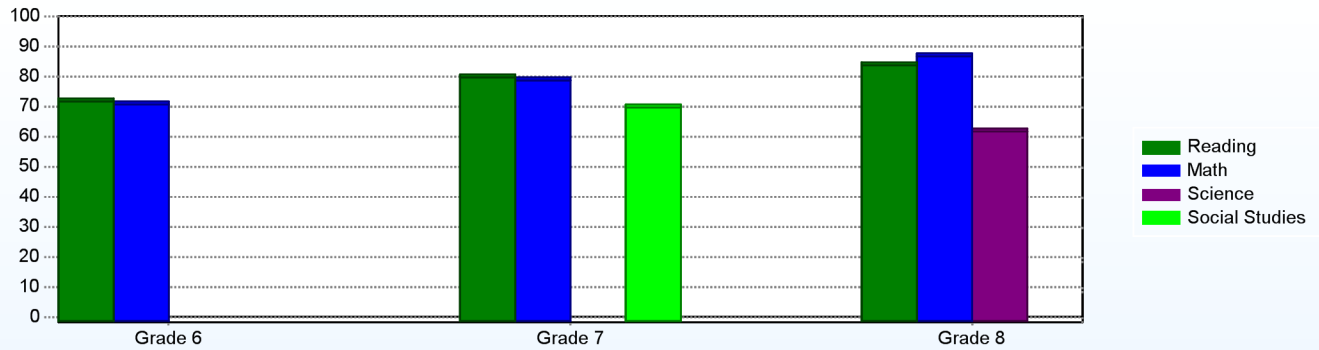
Other Student Characteristics		
	2011	2012
English Language Learner	1.4%	1.5%
Low Income	33.7%	42.6%
Special Education	6.5%	10.8%
Enrolled for Full Year	96.7%	N/A

Class Size (Percentage by Range) (2011-2012)



Student Achievement

Percentage of Students Meeting State Standards (2011-2012)



Exemplary Programs

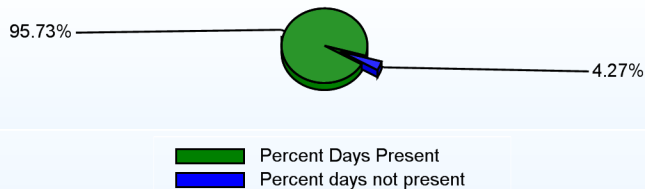
Postlethwait Middle School continues to invite our students to be apart of award winning and exemplary opportunities academically, artistically and athletically. Our Business Professionals of America, Technology Student Association, Math League, Science Olympiad and Odyssey of the Mind teams continue to be top contenders on the local and state level. As service to our community the Junior Honor Society volunteers weekly through peer mentoring our neighbors at the Charlton Program. We also boast a regionally distinctive Concert Band, Women's Choir and Jazz Band. Green conscious students of our Eco-Team have created and maintain a living classroom located in the rear of our campus. Winning with CR Pride, our sports teams are shining examples of our tradition of excellence. Parents are invited to participate in the activities of the school. Daily emails from the administration are sent to parents via our PTO to assist in maintaining communication and parent involvement.

Student - School Safety and Discipline

Number of Reported Offenses (2011-2012)

	<u>School</u>	<u>District</u>	<u>State</u>
School Crimes (Title 14, Delaware Code, §4112)	8	30	957
Department of Education (DOE) Offenses	129	389	10291
All School Safety Policy in Place	Yes		

Percent Days Present (2011-2012)



Suspensions and Expulsions

	<u>2012</u>
Number of Suspensions	272
Number of Expulsions	0
Count of Students Suspended/Expelled	142
September 30 Enrollment	809
Percent of Students Suspended/Expelled	18%
District Percentage	12%
State Percentage	15%

Our Staff

Number of Instructional Staff

	<u>2012</u>
Teachers	48
Librarians	1
Pupil Support	3
Total	52

Staff by Race/Ethnicity

	<u>2012</u>
American Indian	0.0%
African American	15.4%
Asian American	0.0%
Hispanic	1.9%
White	82.7%

Staffing Ratios

	<u>2012</u>
Students Per Teacher	17
Students Per Administrator	405
Students Per Instructional Staff	14
Students Per Pupil Support Staff	270
School Staff Per Administrator	38

Staff Qualifications

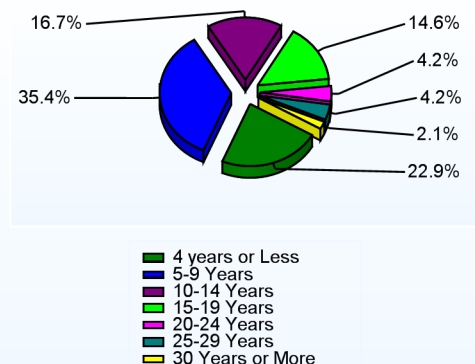
Percentage of Classes Taught by Highly Qualified Teachers (2011-2012)

	<u>Total Classes</u>	<u>% Highly Qualified</u>	<u>% Not Highly Qualified</u>
Reading/ Language Arts	59	100.0%	0.0%
Arts	52	100.0%	0.0%
Science	59	100.0%	0.0%
Mathematics	59	100.0%	0.0%
Social Studies	61	100.0%	0.0%

Education Level

	<u>2012</u>
Percent with Masters Degree and Above	57.1%
Percent Holding National Board for Professional Teaching Standards	0.0%

Years of Teaching Experience (2011-2012)

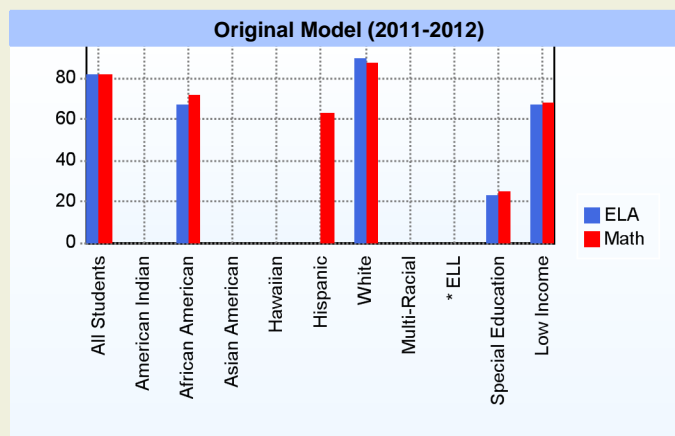


Curriculum Highlights

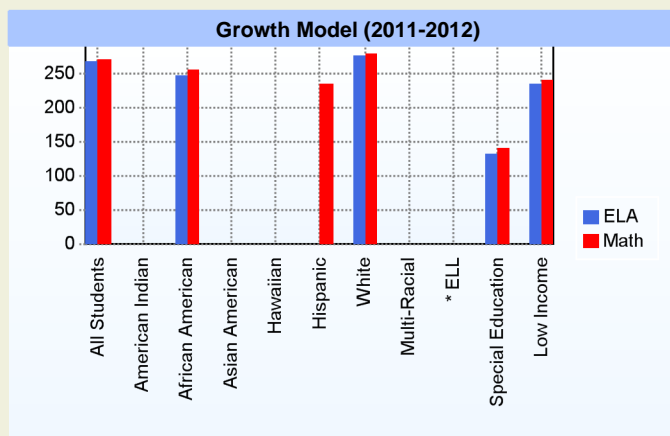
The CR School District has established a curriculum development process which supports alignment to the existing Common Core Standards and Grade Level Expectations. This process involves teacher and administrative input through a Curriculum Cabinet and Council process. The preparation of our students as life-long learners in a global community of the 21st century society is the unifying objective of this process. The curriculum not only identifies essential knowledge and skills, but also supports students' development in problem solving, as well as gathering and using resources that will enable them to succeed. Each content area (English/Language Arts, Mathematics, Science, Social Studies, Visual and Performing Arts, World Languages, Physical Education, Health, and Family and Consumer Sciences) also has an Assessment of Learning and Assessment for Learning component which offers immediate feedback and data driven assessments aligned with state standards.

AYP

Only groups with greater than 40 students are reported



* English Language Learner



* English Language Learner

% Test Participation (2011-2012)

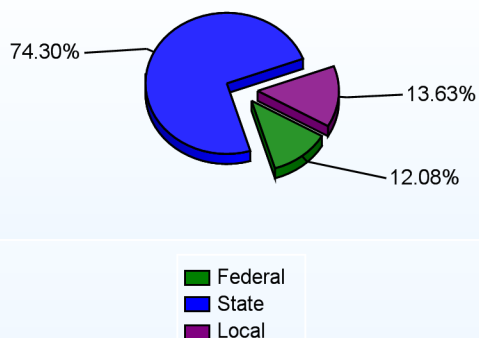
	ELA	Math	ELA Goal	Math Goal
All Students	100	100	95	95
American Indian	*	*	95	95
African American	100	100	95	95
Asian American	*	*	95	95
Hawaiian	*	*	95	95
Hispanic	100	100	95	95
White	100	100	95	95
Multi-Racial	*	*	95	95
English Language Learner	*	*	95	95
Special Education	100	100	95	95
Low Income	100	100	95	95



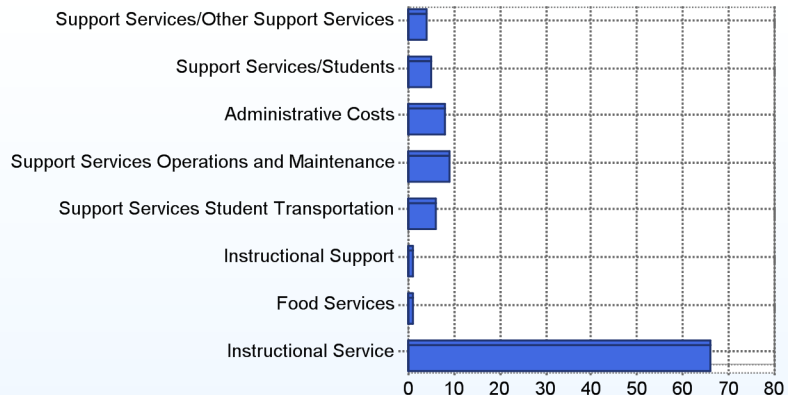
School Finances

District Expenditure per Pupil (2010-2011): \$9,762

District Sources of Revenue (2010-2011)



Percent District Allocation of Current Expenses by Category (2010-2011)



School Salary Allocation

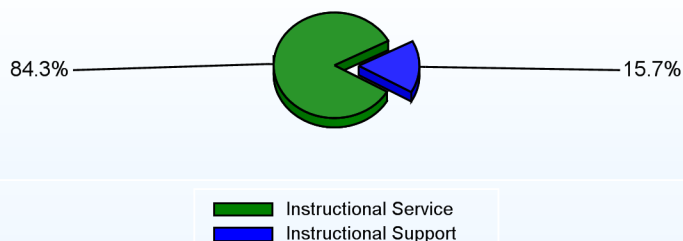
Instructional Service

	2012
Teachers	67.6%
Librarians	1.7%
Instructional Support	10.0%
Pupil Support	5.0%
Total	84.3%

Instructional Support

	2012
Administration	5.5%
Secretaries	2.7%
Food Services	2.6%
Maintenance	4.9%
Total	15.7%

Instructional vs. Support (2011-2012)



For further information and detailed reports, visit

<http://profiles.doe.k12.de.us>

or contact your local school district office.

Glossary: <http://profiles.doe.k12.de.us/glossary.aspx>



Delaware Department of Education

John G. Townsend Building
401 Federal Street, Suite #2
Dover, Delaware, 19901 - 3639
Phone: (302) 735-4000

District: Caesar Rodney School District
Address: 360 Webbs Lane, Dover DE 19904
Principal: Craig Wearden
AYP: Met

Telephone: (302) 697-2101
Web: www.brown.cr.k12.de.us

School Demographics

Fall Enrollment		
	2011	2012
Grade 1	89	60
Grade 2	74	99
Grade 3	73	87
Grade 4	77	91
Grade 5	93	99
Total	406	436

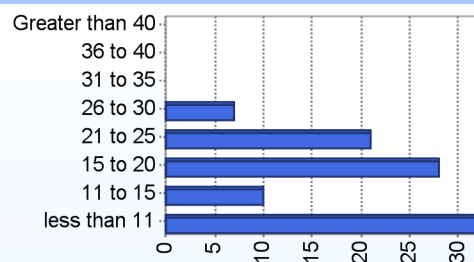
Enrollment by Race/Ethnicity		
	2011	2012
African American	45.3%	44.0%
Asian	1.7%	1.8%
Hispanic/Latino	5.9%	7.6%
White	47.0%	45.2%
Multi-Racial		1.4%

Other Student Characteristics		
	2011	2012
English Language Learner	1.0%	1.8%
Low Income	60.1%	69.3%
Special Education	12.1%	20.2%
Enrolled for Full Year	94.1%	N/A

Recently Arrived ELL Students	
	2012
Number of Students Not Tested on ELA Assessment	0

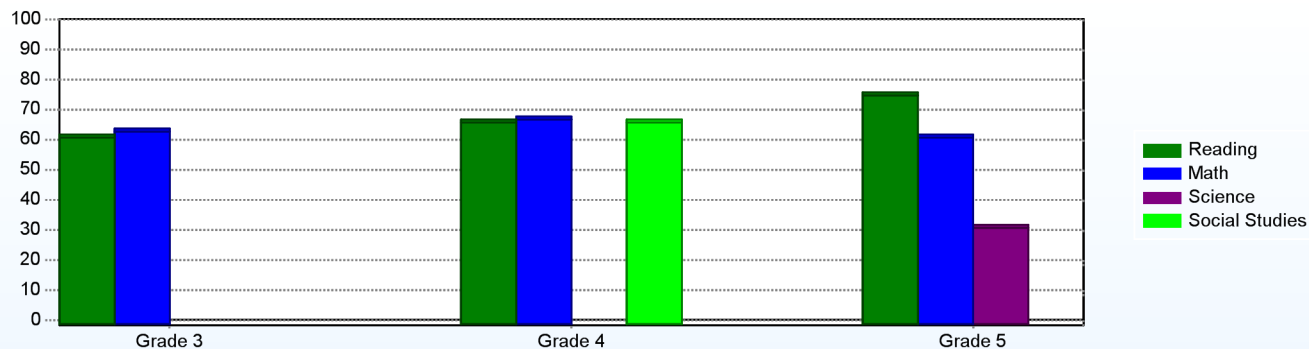
School Promotion by Grade	
	2011
Grade 1	100.0%
Grade 2	100.0%
Grade 3	98.6%
Grade 4	100.0%
Grade 5	100.0%

Class Size (Percentage by Range) (2011-2012)



Student Achievement

Percentage of Students Meeting State Standards (2011-2012)



Exemplary Programs

W. Reily Brown Elementary is proud of its many exemplary programs! Qualified students participate in our Talented and Gifted (TAG) program, which includes the annual Odyssey of the Mind competition at the University of Delaware. Fourth and fifth graders have the opportunity to serve on Student Council, which conducts school spirit days and runs the school store. Third graders make and sell their own products during Market Day. WRB also hosts an annual Art Fair, several chorus & band concerts, and quarterly movie nights for students and family members. Our annual Wax Museum, featuring famous historical figures live and in costume, is a must-see! Students at our school finish out the year with their families at the annual Read and Relax Picnic on the last day of school.

Student - School Safety and Discipline

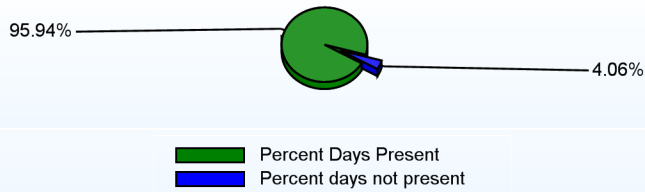
Number of Reported Offenses (2011-2012)

	<u>School</u>	<u>District</u>	<u>State</u>
School Crimes (Title 14, Delaware Code, §4112)		30	957
Department of Education (DOE) Offenses	19	389	10291
All School Safety Policy in Place	Yes		

Suspensions and Expulsions

	<u>2012</u>
Number of Suspensions	64
Number of Expulsions	0
Count of Students Suspended/Expelled	35
September 30 Enrollment	436
Percent of Students Suspended/Expelled	8%
District Percentage	12%
State Percentage	15%

Percent Days Present (2011-2012)



Our Staff

Number of Instructional Staff

	<u>2012</u>
Teachers	32
Librarians	1
Pupil Support	3
Total	36

Staff by Race/Ethnicity

	<u>2012</u>
American Indian	0.0%
African American	2.8%
Asian American	0.0%
Hispanic	0.0%
White	97.2%

Staffing Ratios

	<u>2012</u>
Students Per Teacher	14
Students Per Administrator	218
Students Per Instructional Staff	10
Students Per Pupil Support Staff	145
School Staff Per Administrator	28

Staff Qualifications

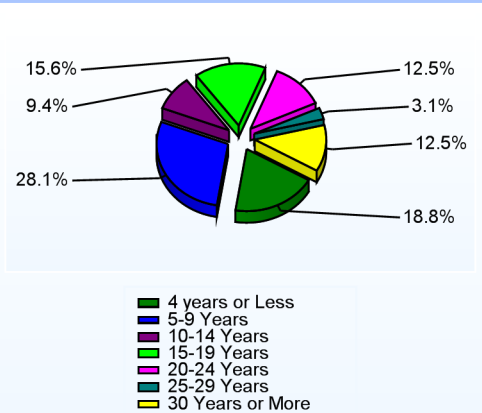
Percentage of Classes Taught by Highly Qualified Teachers (2011-2012)

	<u>Total Classes</u>	<u>% Highly Qualified</u>	<u>% Not Highly Qualified</u>
Reading/ Language Arts	1	100.0%	0.0%
Arts	2	100.0%	0.0%
Elementary General	30	100.0%	0.0%

Education Level

	<u>2012</u>
Percent with Masters Degree and Above	48.9%
Percent Holding National Board for Professional Teaching Standards	0.0%

Years of Teaching Experience (2011-2012)

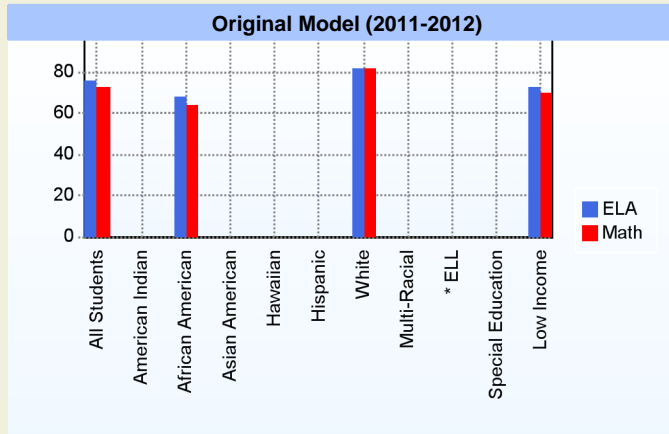


Curriculum Highlights

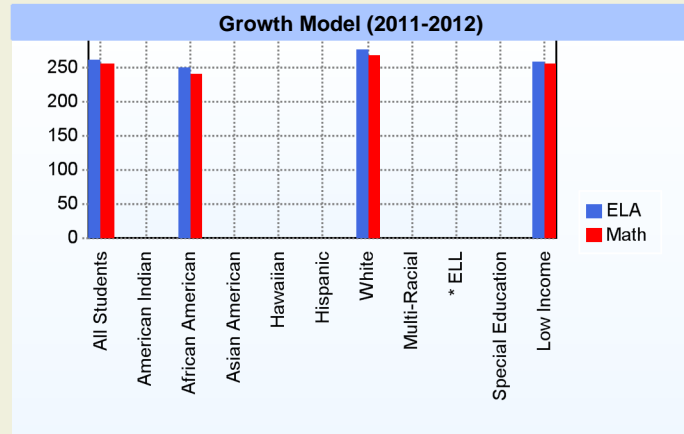
The CR School District has established a curriculum development process which supports alignment to the existing Delaware State Standards and Grade Level Expectations. This process involves teacher and administrative input through a Curriculum Cabinet and Council process. The preparation of our students as life-long learners in a global community of the 21st century society is the unifying objective of this process. The curriculum not only identifies essential knowledge and skills, but also supports students' development in problem solving and gathering and using resources that will enable them to succeed. Each content area (English/Language Arts, Mathematics, Science, Social Studies, Visual and Performing Arts, World Languages, Physical Education, Health, and Family and Consumer Sciences) also has an Assessment of Learning and Assessment for Learning component to support students in the learning process and to determine specific performance relative to the State Standards.

AYP

Only groups with greater than 40 students are reported



* English Language Learner



* English Language Learner

% Test Participation (2011-2012)

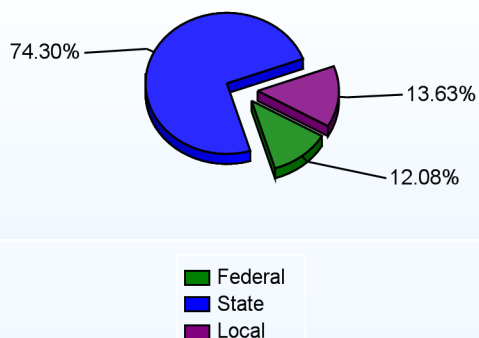
	<u>ELA</u>	<u>Math</u>	<u>ELA Goal</u>	<u>Math Goal</u>
All Students	100	100	95	95
American Indian	*	*	95	95
African American	100	100	95	95
Asian American	*	*	95	95
Hawaiian	*	*	95	95
Hispanic	*	*	95	95
White	100	100	95	95
Multi-Racial	*	*	95	95
English Language Learner	*	*	95	95
Special Education	*	*	95	95
Low Income	100	100	95	95



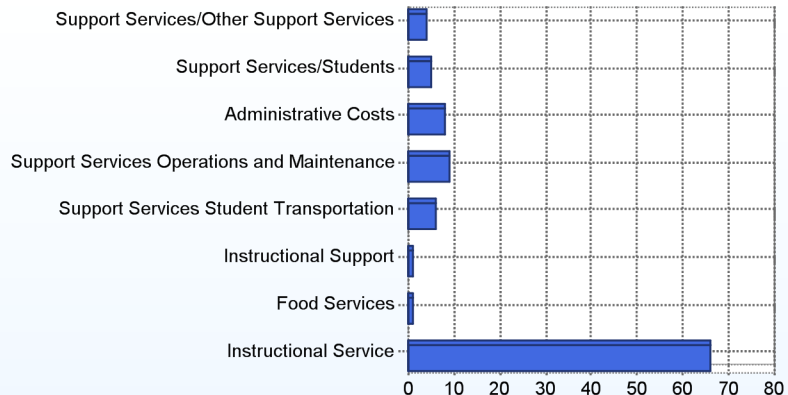
School Finances

District Expenditure per Pupil (2010-2011): \$9,762

District Sources of Revenue (2010-2011)



Percent District Allocation of Current Expenses by Category (2010-2011)



School Salary Allocation

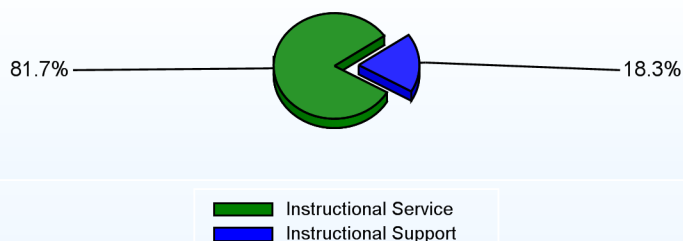
Instructional Service

	2012
Teachers	62.8%
Librarians	1.7%
Instructional Support	11.2%
Pupil Support	6.0%
Total	81.7%

Instructional Support

	2012
Administration	7.2%
Secretaries	2.4%
Food Services	3.3%
Maintenance	5.4%
Total	18.3%

Instructional vs. Support (2011-2012)



For further information and detailed reports, visit

<http://profiles.doe.k12.de.us>

or contact your local school district office.

Glossary: <http://profiles.doe.k12.de.us/glossary.aspx>



Delaware Department of Education

John G. Townsend Building
401 Federal Street, Suite #2
Dover, Delaware, 19901 - 3639
Phone: (302) 735-4000

District: Caesar Rodney School District

Telephone: (302) 698-8400

Address: 109 East Camden-Wyoming Avenue, Camden DE 19934

Web: www.fms.cr.k12.de.us

Principal: Jessilene Corbett

AYP: Met

School Demographics

Fall Enrollment		
	2011	2012
Grade 6	269	286
Grade 7	266	292
Grade 8	285	282
Total	820	860

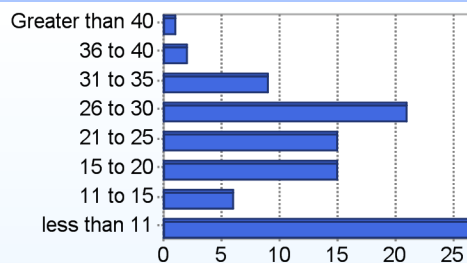
Recently Arrived ELL Students	
	2012
Number of Students Not Tested on ELA Assessment	2

Enrollment by Race/Ethnicity		
	2011	2012
African American	34.8%	32.4%
American Indian	0.4%	0.3%
Asian	3.5%	3.4%
Hispanic/Latino	3.5%	4.9%
White	57.7%	58.4%
Multi-Racial	0.1%	0.6%

School Promotion by Grade	
	2011
Grade 6	100.0%
Grade 7	100.0%
Grade 8	99.3%

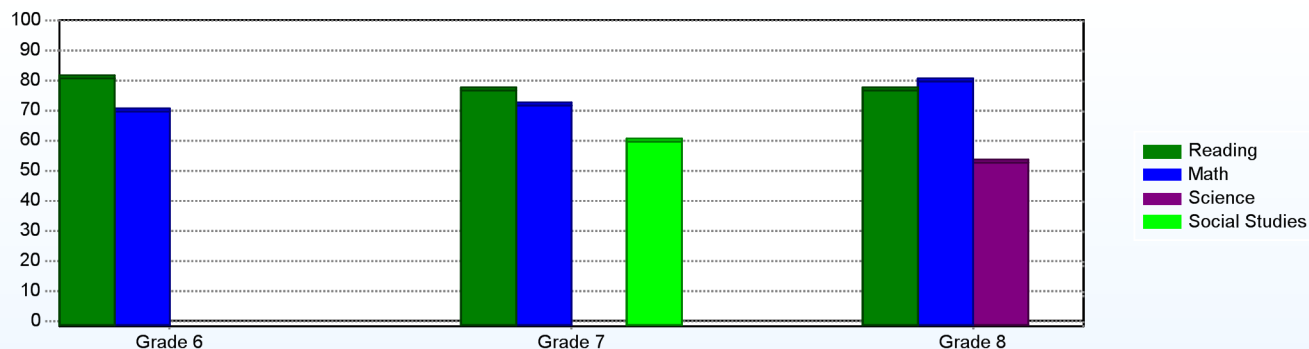
Other Student Characteristics		
	2011	2012
English Language Learner	1.3%	2.0%
Low Income	46.2%	49.7%
Special Education	9.9%	13.7%
Enrolled for Full Year	94.3%	N/A

Class Size (Percentage by Range) (2011-2012)



Student Achievement

Percentage of Students Meeting State Standards (2011-2012)



Exemplary Programs

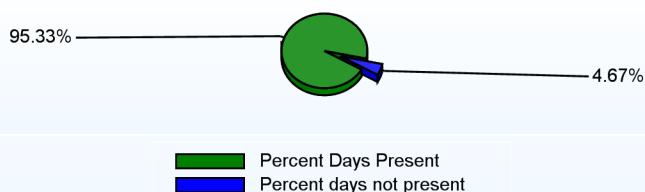
Fifer is proud to continue CR's strong traditions of excellence. Fifer's Athletic Program had some shining moments during the 2011-2012 school year. Best season records include: boys' soccer 8-3, wrestling 9-2, and for the third consecutive year the girls' soccer team was undefeated with a record of 10-0. In addition to all our existing fall, winter, and spring sports, FMS was able to offer two intramural sports this year--girls' volleyball and boys' lacrosse. Academically, the staff continues to use technology as a means for students to access the curriculum/instructional resources. In-class phones, SMART Boards and school-wide video distribution systems also bring important resources into classroom. We have also introduced the Bank At School Program. This program allows students to start a savings account by making deposits at school. They learn the importance of money management, reaching financial goals, and banking procedures.

Student - School Safety and Discipline

Number of Reported Offenses (2011-2012)

	<u>School</u>	<u>District</u>	<u>State</u>
School Crimes (Title 14, Delaware Code, §4112)	3	30	957
Department of Education (DOE) Offenses	92	389	10291
All School Safety Policy in Place	Yes		

Percent Days Present (2011-2012)



Suspensions and Expulsions

	<u>2012</u>
Number of Suspensions	353
Number of Expulsions	0
Count of Students Suspended/Expelled	174
September 30 Enrollment	860
Percent of Students Suspended/Expelled	20%
District Percentage	12%
State Percentage	15%

Our Staff

Number of Instructional Staff

	<u>2012</u>
Teachers	54
Librarians	1
Pupil Support	3
Total	58

Staff by Race/Ethnicity

	<u>2012</u>
American Indian	0.0%
African American	12.1%
Asian American	1.7%
Hispanic	0.0%
White	86.2%

Staffing Ratios

	<u>2012</u>
Students Per Teacher	16
Students Per Administrator	430
Students Per Instructional Staff	13
Students Per Pupil Support Staff	287
School Staff Per Administrator	43

Staff Qualifications

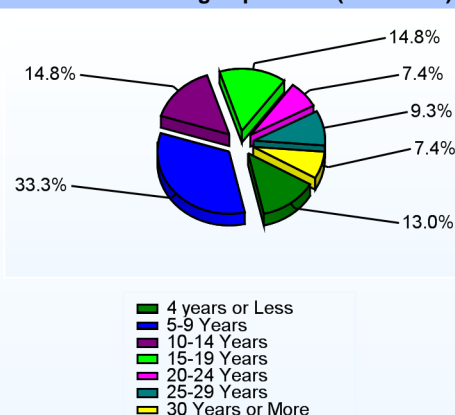
Percentage of Classes Taught by Highly Qualified Teachers (2011-2012)

	<u>Total Classes</u>	<u>% Highly Qualified</u>	<u>% Not Highly Qualified</u>
Reading/ Language Arts	48	100.0%	0.0%
Arts	54	100.0%	0.0%
Science	36	100.0%	0.0%
Mathematics	33	100.0%	0.0%
Social Studies	35	100.0%	0.0%

Education Level

	<u>2012</u>
Percent with Masters Degree and Above	59.2%
Percent Holding National Board for Professional Teaching Standards	5.6%

Years of Teaching Experience (2011-2012)

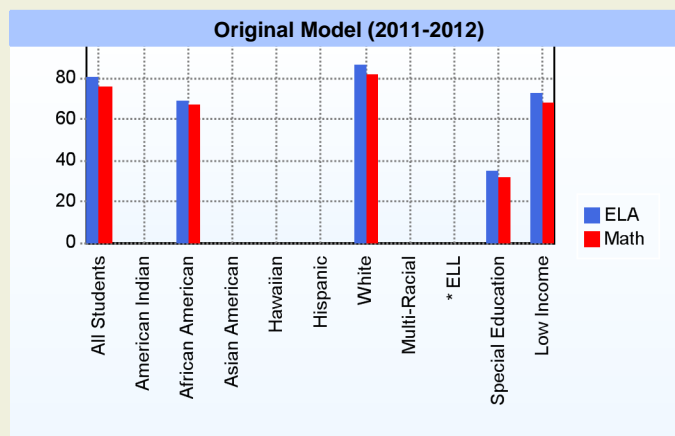


Curriculum Highlights

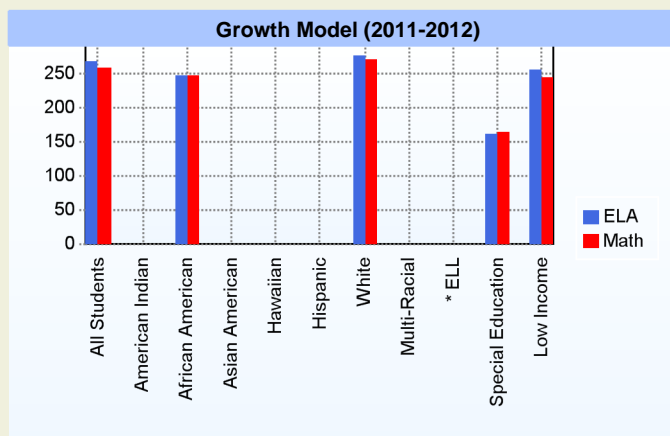
Caesar Rodney Schools have established a curriculum development process which supports alignment to the existing Delaware State Standards, CCSS, and GLEs. This process involves teacher and administrative input through a Curriculum Cabinet and Council process. The preparation of our students as life-long learners in a global community of the 21st century society is the unifying objective of this process. The curriculum not only identifies essential knowledge and skills, but also supports students' development in problem solving and gathering and using resources that will enable them to succeed. Each content area (English/Language Arts, Mathematics, Science, Social Studies, Visual and Performing Arts, World Languages, Physical Education, Health, and Family and Consumer Sciences) also has an Assessment of Learning and Assessment for Learning component to support students in the learning process and to determine specific performance relative to the State Standards.

AYP

Only groups with greater than 40 students are reported



* English Language Learner



* English Language Learner

% Test Participation (2011-2012)

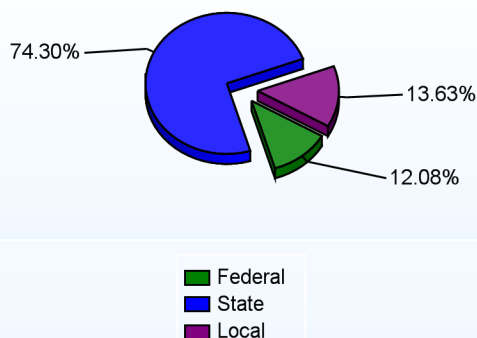
	<u>ELA</u>	<u>Math</u>	<u>ELA Goal</u>	<u>Math Goal</u>
All Students	100	100	95	95
American Indian	*	*	95	95
African American	100	100	95	95
Asian American	*	*	95	95
Hawaiian	*	*	95	95
Hispanic	*	*	95	95
White	100	100	95	95
Multi-Racial	*	*	95	95
English Language Learner	*	*	95	95
Special Education	100	100	95	95
Low Income	100	100	95	95



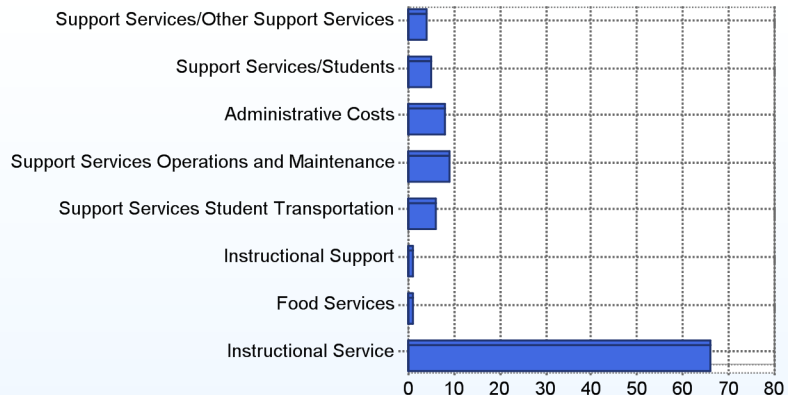
School Finances

District Expenditure per Pupil (2010-2011): \$9,762

District Sources of Revenue (2010-2011)



Percent District Allocation of Current Expenses by Category (2010-2011)



School Salary Allocation

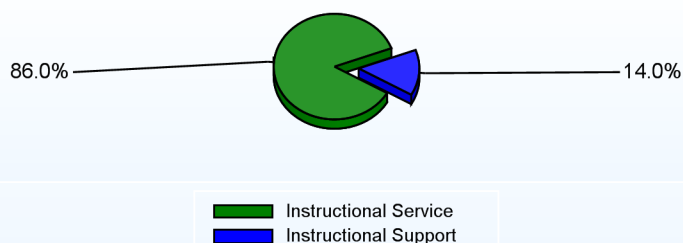
Instructional Service

	2012
Teachers	70.2%
Librarians	1.3%
Instructional Support	10.5%
Pupil Support	4.0%
Total	86.0%

Instructional Support

	2012
Administration	4.8%
Secretaries	2.1%
Food Services	2.5%
Maintenance	4.6%
Total	14.0%

Instructional vs. Support (2011-2012)



For further information and detailed reports, visit

<http://profiles.doe.k12.de.us>

or contact your local school district office.

Glossary: <http://profiles.doe.k12.de.us/glossary.aspx>



Delaware Department of Education

John G. Townsend Building
401 Federal Street, Suite #2
Dover, Delaware, 19901 - 3639
Phone: (302) 735-4000

District: Caesar Rodney School District
Address: 239 Old North Road, Camden DE 19934
Principal: Elvina Knight
AYP: Met

Telephone: (302) 697-2161
Web: www.crhs.cr.k12.de.us

School Demographics

Fall Enrollment		
	2011	2012
Grade 9	710	705
Grade 10	485	482
Grade 11	502	470
Grade 12	370	410
Total	2067	2067

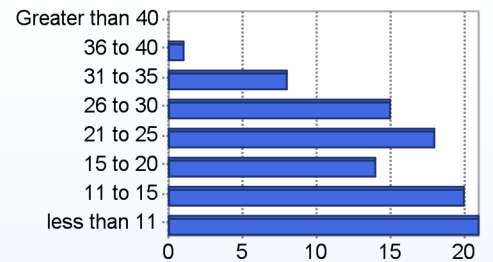
Enrollment by Race/Ethnicity		
	2011	2012
African American	31.2%	32.1%
American Indian	0.3%	0.4%
Asian	4.1%	4.1%
Hispanic/Latino	4.6%	4.7%
White	59.8%	58.6%
Multi-Racial	0.0%	0.1%

Other Student Characteristics		
	2011	2012
English Language Learner	1.0%	1.7%
Low Income	36.3%	40.5%
Special Education	13.8%	12.3%
Enrolled for Full Year	92.5%	N/A

Recently Arrived ELL Students	
	2012
Number of Students Not Tested on ELA Assessment	4

School Promotion by Grade	
	2011
Grade 9	77.5%
Grade 10	96.1%
Grade 11	97.4%
Grade 12	99.2%

Class Size (Percentage by Range) (2011-2012)

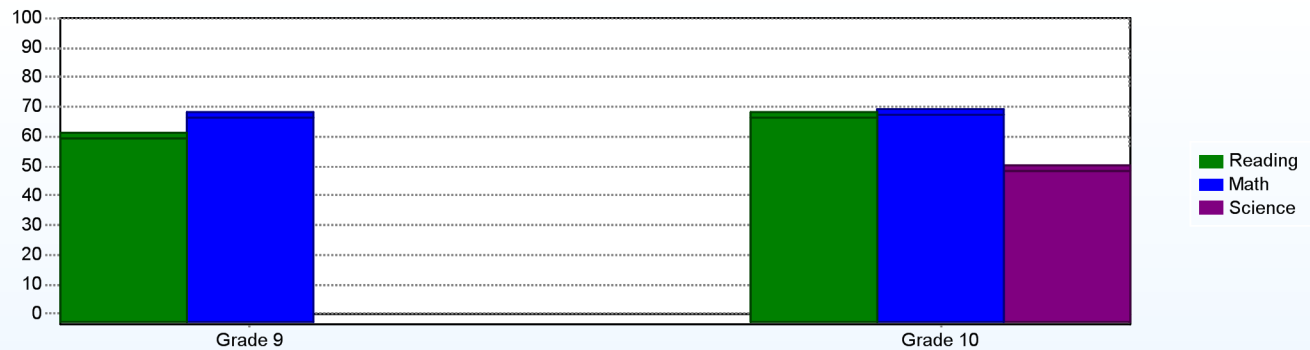


Student Achievement

Advanced Placement (AP) (2010-2011)	
	2011
Advanced Placement Courses	23
No. of Students Enrolled	300
No. of Exams Taken	434
Total No. of Exams Passed	247

Public School SAT Reasoning Test (Average Score) (2010-2011)				
	School	District	State	National
Math	481	481	477	514
Critical Reading	485	485	472	497
Writing	464	464	457	489
Total	1,430	1,430	1,406	1,500

Percentage of Students Meeting State Standards (2011-2012)



Exemplary Programs

The CRHS community has made a commitment to excellence through the development of exemplary programs in the areas of academics, arts, and athletics. Caesar Rodney High School has been a recipient of the Siemans Foundation Award for Advanced Placement, and the Lt. Governor's Model of Educational Excellence Award. In addition, Caesar Rodney High School was nationally recognized in 1994, by Redbook Magazine as Delaware's best high school for the Performing Arts. The student's in Fine Arts, Vocational, and Athletic programs have garnered state and national recognition for their outstanding work. CRHS has also been the recipient of the Founders Cup Trophy in athletics for the past thirteen years. CRHS is known for its commitment to the 4 A's which consist of : Academics, Arts, Athletics, and Atmosphere.

Student - School Safety and Discipline

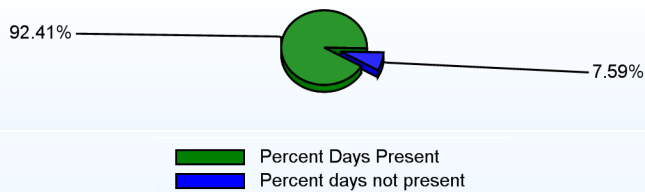
Number of Reported Offenses (2011-2012)

	<u>School</u>	<u>District</u>	<u>State</u>
School Crimes (Title 14, Delaware Code, §4112)	17	30	957
Department of Education (DOE) Offenses	91	389	10291
All School Safety Policy in Place	Yes		

Suspensions and Expulsions

	<u>2012</u>
Number of Suspensions	1064
Number of Expulsions	0
Count of Students Suspended/Expelled	413
September 30 Enrollment	2067
Percent of Students Suspended/Expelled	20%
District Percentage	12%
State Percentage	15%

Percent Days Present (2011-2012)



Our Staff

Number of Instructional Staff

	<u>2012</u>
Teachers	130
Librarians	1
Pupil Support	8
Total	139

Staff by Race/Ethnicity

	<u>2012</u>
American Indian	0.7%
African American	9.4%
Asian American	1.4%
Hispanic	0.7%
White	87.8%

Staffing Ratios

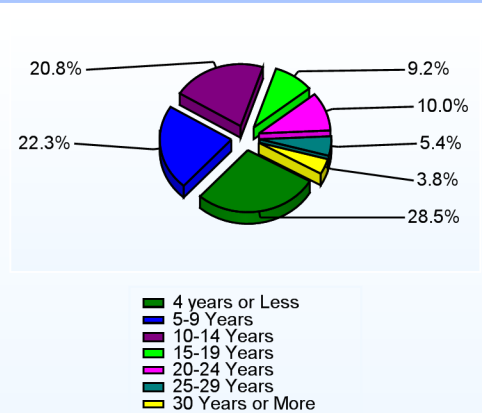
	<u>2012</u>
Students Per Teacher	16
Students Per Administrator	413
Students Per Instructional Staff	14
Students Per Pupil Support Staff	258
School Staff Per Administrator	38

Staff Qualifications

Percentage of Classes Taught by Highly Qualified Teachers (2011-2012)

	<u>Total Classes</u>	<u>% Highly Qualified</u>	<u>% Not Highly Qualified</u>
English	64	100.0%	0.0%
Reading/ Language Arts	33	100.0%	0.0%
Arts	17	100.0%	0.0%
Foreign Languages	54	100.0%	0.0%
Science	90	100.0%	0.0%
Mathematics	100	100.0%	0.0%
Geography	1	100.0%	0.0%
Civics & Government	75	100.0%	0.0%
Economics	1	100.0%	0.0%
Social Studies	24	100.0%	0.0%
History	43	100.0%	0.0%

Years of Teaching Experience (2011-2012)



Education Level

	<u>2012</u>
Percent with Masters Degree and Above	60.5%
Percent Holding National Board for Professional Teaching Standards	3.0%

Curriculum Highlights

The School District has established a curriculum development process which supports alignment to the existing Delaware State Standards and Grade Level Expectations. This process involves teacher and administrative input through a Curriculum Cabinet and Council process. The preparation of our students as life-long learners in a global community of the 21st century society is the unifying objective of this process. The curriculum not only identifies essential knowledge and skills, but also supports students' development in problem solving and gathering and using resources that will enable them to succeed. Each content area also has an Assessment of Learning and Assessment for Learning component to support students in the learning process and to determine specific performance relative to the State Standards.

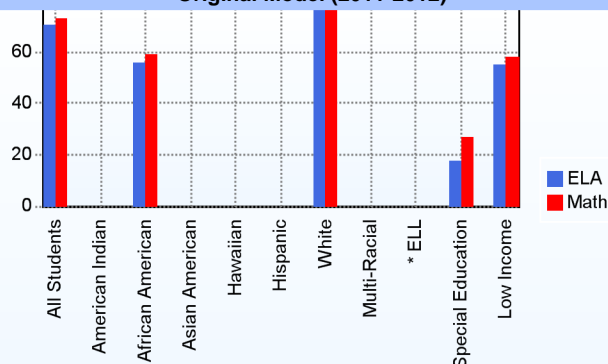
Graduation Rate - ESEA 4 Year Adjusted

	2010	2011
	ESEA	ESEA
All Students	77.3%	79.4%
American Indian	75.0%	50.0%
African American	74.3%	71.4%
Asian American	80.0%	95.7%
Hispanic	72.2%	73.1%
White	79.0%	83.2%
English Language Learner	76.9%	100.0%
Special Education	47.9%	61.7%
Low Income	62.8%	66.0%

AYP

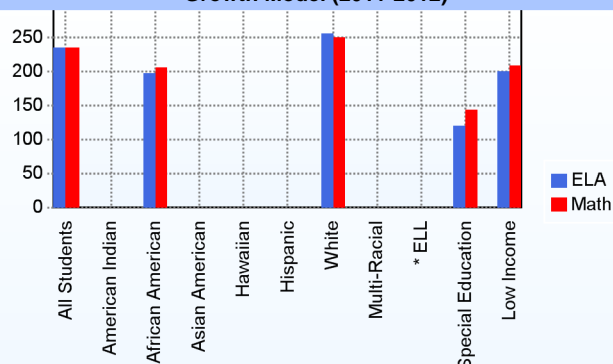
Only groups with greater than 40 students are reported

Original Model (2011-2012)



* English Language Learner

Growth Model (2011-2012)



* English Language Learner

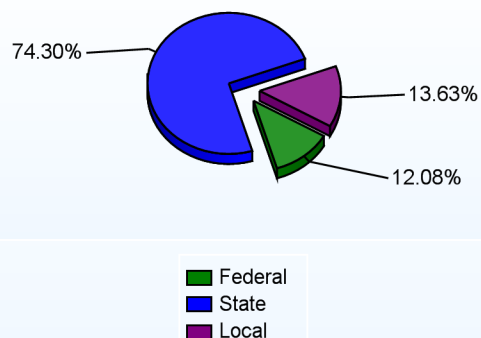
% Test Participation (2011-2012)

	ELA	Math	ELA Goal	Math Goal
All Students	100	100	95	95
American Indian	*	*	95	95
African American	100	100	95	95
Asian American	*	*	95	95
Hawaiian	*	*	95	95
Hispanic	*	*	95	95
White	100	100	95	95
Multi-Racial	*	*	95	95
English Language Learner	*	*	95	95
Special Education	100	100	95	95
Low Income	100	100	95	95

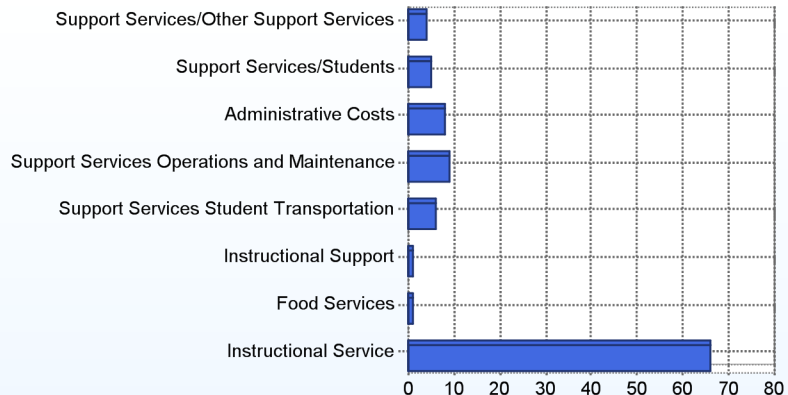
School Finances

District Expenditure per Pupil (2010-2011): \$9,762

District Sources of Revenue (2010-2011)



Percent District Allocation of Current Expenses by Category (2010-2011)



School Salary Allocation

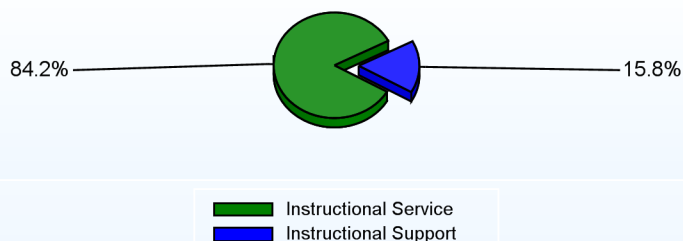
Instructional Service

	2012
Teachers	74.2%
Librarians	0.7%
Instructional Support	4.3%
Pupil Support	5.0%
Total	84.2%

Instructional Support

	2012
Administration	5.1%
Secretaries	3.0%
Food Services	2.7%
Maintenance	4.5%
Not Classified	0.5%
Total	15.8%

Instructional vs. Support (2011-2012)



For further information and detailed reports, visit

<http://profiles.doe.k12.de.us>

or contact your local school district office.

Glossary: <http://profiles.doe.k12.de.us/glossary.aspx>



Delaware Department of Education

John G. Townsend Building
401 Federal Street, Suite #2
Dover, Delaware, 19901 - 3639
Phone: (302) 735-4000

District: Caesar Rodney School District
Address: 3100 Hawthorne Drive, Dover DE 19901
Principal: David Santore
AYP: Met

Telephone: (302) 674-3284
Web: www.dabm.cr.k12.de.us/

School Demographics

Fall Enrollment		
	2011	2012
Grade 6	71	66
Grade 7	60	72
Grade 8	69	54
Total	200	192

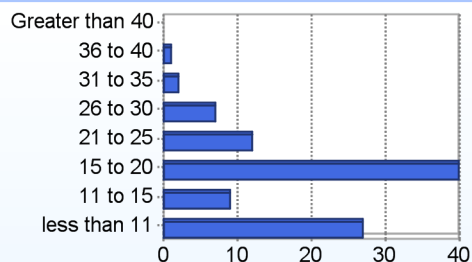
Recently Arrived ELL Students	
	2012
Number of Students Not Tested on ELA Assessment	0

Enrollment by Race/Ethnicity		
	2011	2012
African American	21.5%	14.1%
American Indian	2.0%	0.5%
Asian	1.0%	2.6%
Hawaiian	0.5%	
Hispanic/Latino	10.5%	10.9%
White	55.5%	64.1%
Multi-Racial	9.0%	7.8%

School Promotion by Grade	
	2011
Grade 6	100.0%
Grade 7	100.0%
Grade 8	100.0%

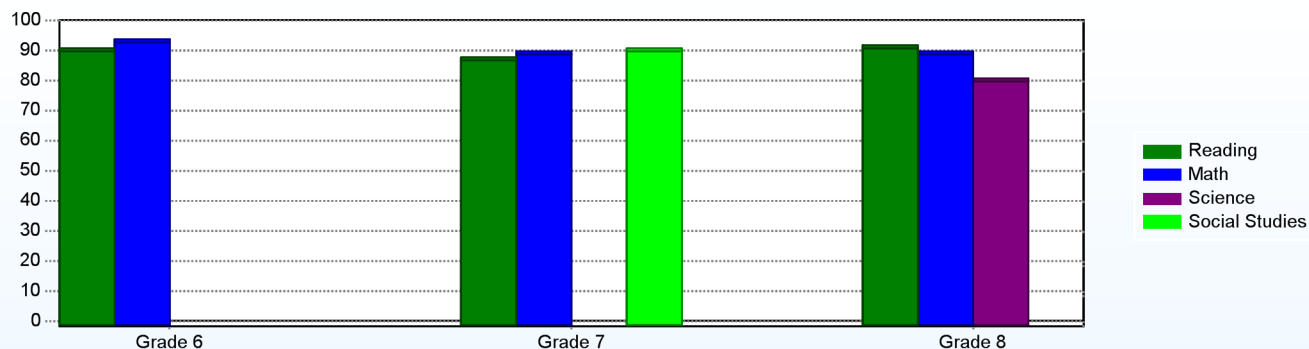
Other Student Characteristics		
	2011	2012
English Language Learner	0.0%	0.5%
Low Income	17.5%	23.4%
Special Education	11.5%	12.0%
Enrolled for Full Year	91.5%	N/A

Class Size (Percentage by Range) (2011-2012)



Student Achievement

Percentage of Students Meeting State Standards (2011-2012)



Exemplary Programs

Dover AFB Middle School is committed to promoting cultural awareness through academic excellence. We have established an international sister-city exchange program with Iwanuma City Middle School, located in the Miyagi Prefecture, north of Tokyo, Japan. Dover AFB Middle and Iwanuma City Middle School students and teachers are involved in cultural and educational exchange. International exchange programs such as this one focus on promoting life-long learning and greater cultural understanding through global and ethnocentric exchange. Teachers, students, and parents travel to our sister-city and they in-turn visit our school. We participate in a variety of classroom hands-on demonstrations, food tastings, and explore the different games that each country has to offer. We share our similarities and differences by promoting global awareness.

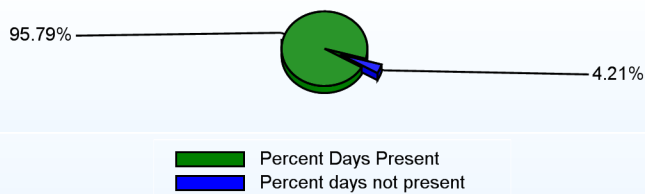
Our summer reading program encourages and promotes year around teaching and learning. Students and teachers are able to blog on-line.

Student - School Safety and Discipline

Number of Reported Offenses (2011-2012)

	<u>School</u>	<u>District</u>	<u>State</u>
School Crimes (Title 14, Delaware Code, §4112)		30	957
Department of Education (DOE) Offenses	4	389	10291
All School Safety Policy in Place	Yes		

Percent Days Present (2011-2012)



Suspensions and Expulsions

	<u>2012</u>
Number of Suspensions	41
Number of Expulsions	0
Count of Students Suspended/Expelled	28
September 30 Enrollment	192
Percent of Students Suspended/Expelled	15%
District Percentage	12%
State Percentage	15%

Our Staff

Number of Instructional Staff

	<u>2012</u>
Teachers	11
Librarians	1
Pupil Support	3
Total	15

Staff by Race/Ethnicity

	<u>2012</u>
American Indian	0.0%
African American	6.7%
Asian American	0.0%
Hispanic	0.0%
White	93.3%

Staffing Ratios

	<u>2012</u>
Students Per Teacher	18
Students Per Administrator	192
Students Per Instructional Staff	12
Students Per Pupil Support Staff	64
School Staff Per Administrator	30

Staff Qualifications

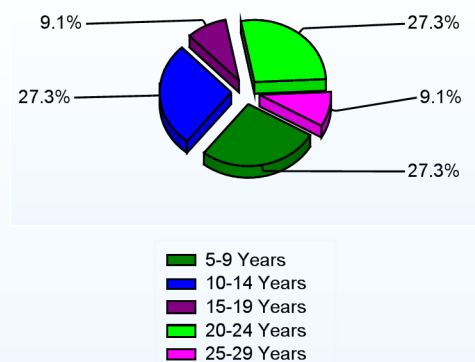
Percentage of Classes Taught by Highly Qualified Teachers (2011-2012)

	<u>Total Classes</u>	<u>% Highly Qualified</u>	<u>% Not Highly Qualified</u>
Reading/ Language Arts	14	100.0%	0.0%
Arts	22	100.0%	0.0%
Science	12	100.0%	0.0%
Mathematics	12	100.0%	0.0%
Social Studies	9	100.0%	0.0%

Education Level

	<u>2012</u>
Percent with Masters Degree and Above	63.2%
Percent Holding National Board for Professional Teaching Standards	15.4%

Years of Teaching Experience (2011-2012)

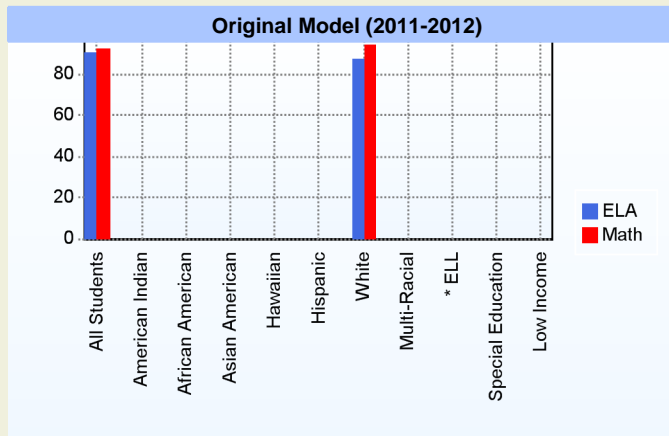


Curriculum Highlights

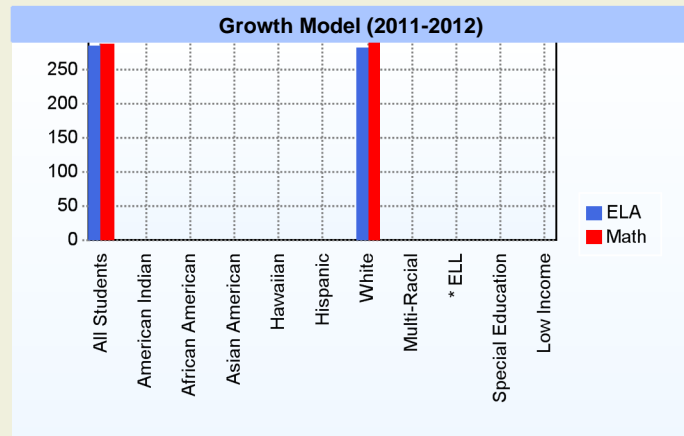
Our district has established a curriculum development process which supports alignment to the existing Delaware State Standards and Grade Level Expectations. This process involves teacher and administrative input through a Curriculum Cabinet and Council process. The preparation of our students as life-long learners in a global community of the 21st century society is the unifying objective of this process. The curriculum not only identifies essential knowledge and skills, but also supports students' development in problem solving and gathering, and using resources that will enable them to succeed. Each content area (English/Language Arts, Mathematics, Science, Social Studies, Visual and Performing Arts, World Languages, Physical Education, Health, and Family and Consumer Sciences) also has an Assessment of Learning and Assessment for Learning component to support students in the learning process and to determine specific performance relative to the State Standards.

AYP

Only groups with greater than 40 students are reported



* English Language Learner



* English Language Learner

% Test Participation (2011-2012)

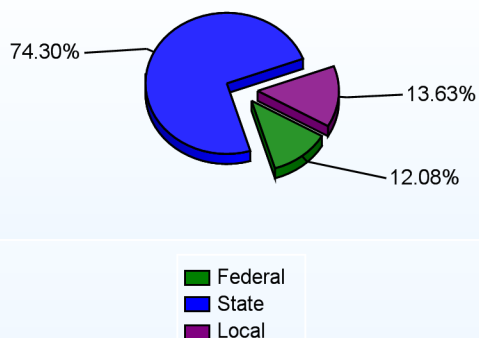
	<u>ELA</u>	<u>Math</u>	<u>ELA Goal</u>	<u>Math Goal</u>
All Students	100	100	95	95
American Indian	*	*	95	95
African American	*	*	95	95
Asian American	*	*	95	95
Hawaiian	*	*	95	95
Hispanic	*	*	95	95
White	100	100	95	95
Multi-Racial	*	*	95	95
English Language Learner	*	*	95	95
Special Education	*	*	95	95
Low Income	*	*	95	95



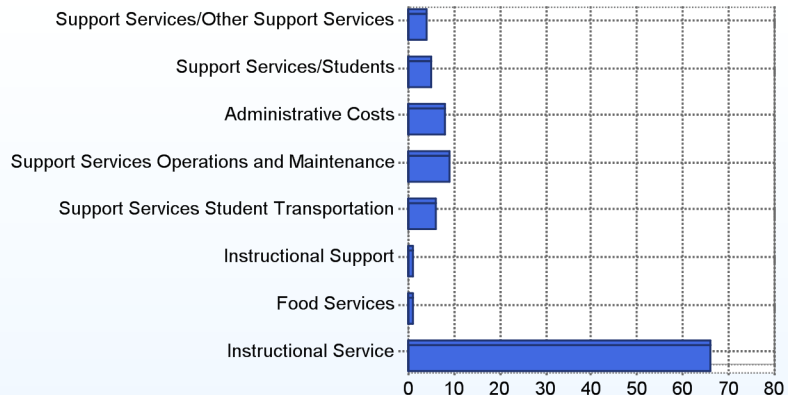
School Finances

District Expenditure per Pupil (2010-2011): \$9,762

District Sources of Revenue (2010-2011)



Percent District Allocation of Current Expenses by Category (2010-2011)



School Salary Allocation

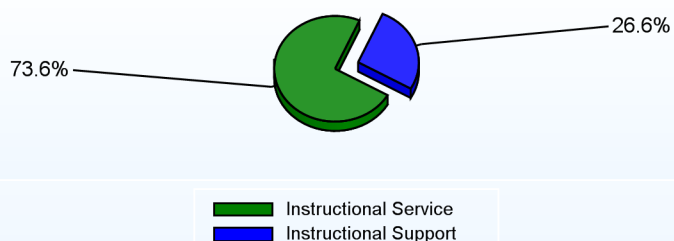
Instructional Service

	2012
Teachers	46.7%
Librarians	4.3%
Instructional Support	11.5%
Pupil Support	11.1%
Total	73.6%

Instructional Support

	2012
Administration	7.9%
Secretaries	4.7%
Food Services	7.7%
Maintenance	6.3%
Total	26.6%

Instructional vs. Support (2011-2012)



For further information and detailed reports, visit

<http://profiles.doe.k12.de.us>

or contact your local school district office.

Glossary: <http://profiles.doe.k12.de.us/glossary.aspx>



Delaware Department of Education

John G. Townsend Building
401 Federal Street, Suite #2
Dover, Delaware, 19901 - 3639
Phone: (302) 735-4000

District: Caesar Rodney School District

Telephone: (302) 697-3103

Address: 278 Sorghum Mill Road, Camden-Wyoming DE 19901

Web: www.charlton.cr.k12.de.us/

Principal: Pamela Atchison

AYP: Not Met

School Demographics

Fall Enrollment		
	<u>2011</u>	<u>2012</u>
Pre-Kindergarten	57	24
Kindergarten	14	16
Grade 1	8	15
Grade 2	14	12
Grade 3	20	13
Grade 4	12	24
Grade 5	13	13
Grade 6	14	13
Grade 7	8	15
Grade 8	11	8
Grade 9	10	10
Grade 10	14	11
Grade 11	18	10
Grade 12	59	59
Total	272	243

Recently Arrived ELL Students	
	<u>2012</u>
Number of Students Not Tested on ELA Assessment	0

Enrollment by Race/Ethnicity		
	<u>2011</u>	<u>2012</u>
African American	34.2%	35.8%
Asian	1.8%	2.1%
Hispanic/Latino	4.8%	7.4%
White	58.8%	53.1%
Multi-Racial	0.4%	1.6%

School Promotion by Grade	
	<u>2011</u>
Kindergarten	92.9%
Grade 1	100.0%
Grade 2	100.0%
Grade 3	100.0%
Grade 4	100.0%
Grade 5	100.0%
Grade 6	100.0%
Grade 7	100.0%
Grade 8	90.9%
Grade 9	100.0%
Grade 10	100.0%
Grade 11	100.0%
Grade 12	30.5%

Other Student Characteristics		
	<u>2011</u>	<u>2012</u>
English Language Learner	1.9%	1.8%
Low Income	41.9%	49.8%
Special Education	100.0%	100.0%
Enrolled for Full Year	89.8%	N/A



Exemplary Programs

The John S. Charlton Program is designed for students with special needs throughout Kent County, Delaware. The Program serves students, 2 to 21 years of age, who have a need to learn functional life skills, via modification of the Common Core State Standards following the Extended Standards and Grade Level Expectations, in order to enhance their level of independence. Students at the John S. Charlton Program receive special education services. John S. Charlton is the Kent County Center for the Delaware Autism Program. Students are served at the John S. Charlton Program throughout schools in the Caesar Rodney School District and at Delaware State University and Wesley College.

Student - School Safety and Discipline

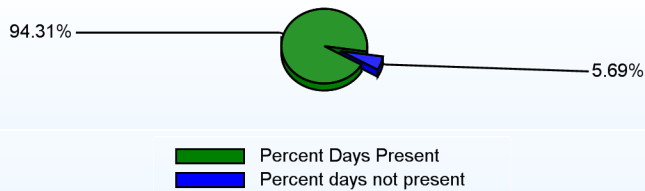
Number of Reported Offenses (2011-2012)

	<u>School</u>	<u>District</u>	<u>State</u>
School Crimes (Title 14, Delaware Code, §4112)		30	957
Department of Education (DOE) Offenses		389	10291
All School Safety Policy in Place	Yes		

Suspensions and Expulsions

	<u>2012</u>
September 30 Enrollment	243
District Percentage	12%
State Percentage	15%

Percent Days Present (2011-2012)



Our Staff

Number of Instructional Staff

	<u>2012</u>
Teachers	20
Pupil Support	12
Total	32

Staff by Race/Ethnicity

	<u>2012</u>
American Indian	0.0%
African American	7.7%
Asian American	0.0%
Hispanic	0.0%
White	92.3%

Staffing Ratios

	<u>2012</u>
Students Per Teacher	12
Students Per Administrator	81
Students Per Instructional Staff	2
Students Per Pupil Support Staff	20
School Staff Per Administrator	41

Staff Qualifications

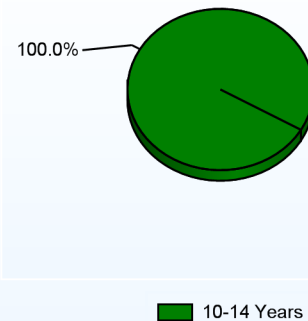
Percentage of Classes Taught by Highly Qualified Teachers (2011-2012)

	<u>Total Classes</u>	<u>% Highly Qualified</u>	<u>% Not Highly Qualified</u>
Elementary General	34	100.0%	0.0%

Education Level

	<u>2012</u>
Percent with Masters Degree and Above	25.0%
Percent Holding National Board for Professional Teaching Standards	0.0%

Years of Teaching Experience (2011-2012)

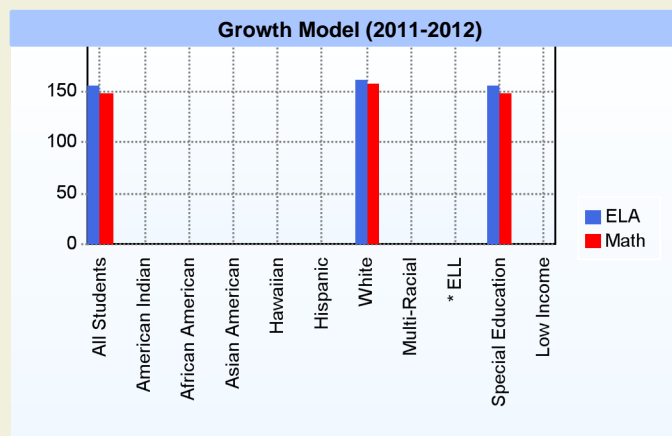
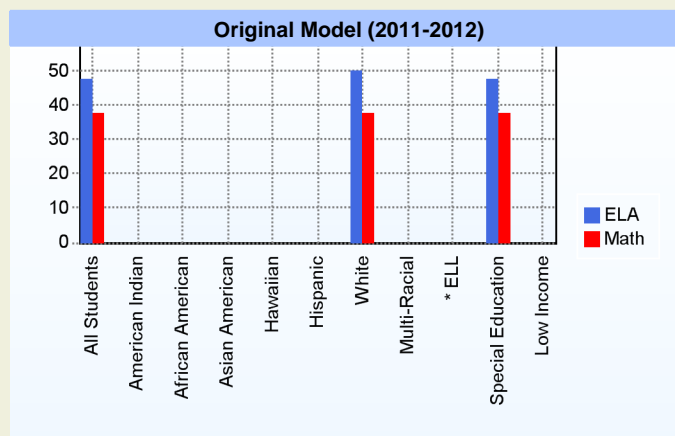


Curriculum Highlights

The Caesar Rodney School District has established a curriculum development process which supports alignment to the existing Common Core State Standards and Grade Level Expectations. This process involves teacher and administrative input through a Curriculum Cabinet and Council process. The preparation of our students as life-long learners in a global community of the 21st century society is the unifying objective of this process. The curriculum not only identifies essential knowledge and skills, but also supports students' development in problem solving and gathering and using resources that will enable them to succeed. Each content area (English/Language Arts, Mathematics, Science, Social Studies, Visual and Performing Arts, Physical Education, Health, and Family and Consumer Sciences) also has an Assessment of Learning and Assessment for Learning component to support students in the learning process and to determine specific performance relative to the State Standard.

AYP

Only groups with greater than 40 students are reported



* English Language Learner

* English Language Learner

% Test Participation (2011-2012)

	<u>ELA</u>	<u>Math</u>	<u>ELA Goal</u>	<u>Math Goal</u>
All Students	*	*	95	95
American Indian	*	*	95	95
African American	*	*	95	95
Asian American	*	*	95	95
Hawaiian	*	*	95	95
Hispanic	*	*	95	95
White	*	*	95	95
Multi-Racial	*	*	95	95
English Language Learner	*	*	95	95
Special Education	*	*	95	95
Low Income	*	*	95	95



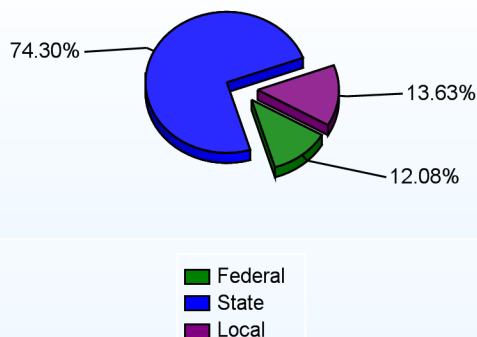
Other

Students at the John S. Charlton Program participate in community visitations, vocational placements, Special Olympics, and the Positive Behavior Support Initiative. During the 2006-2007 through the 2010-2011 school years, the Program achieved the Positive Behavior Support STAR status. In addition, the Program has achieved a Superior School rating three years in a row! One hundred percent of the students in the Program are involved in inclusion opportunities with their typical peers. The Program sponsors Family Fun Nights every other month. Parents are active in many of our events, such as the monthly Positive Behavior Support Celebrations, the School Success Planning Committee, and the Autism Parent Advisory Committee, that meets every month.

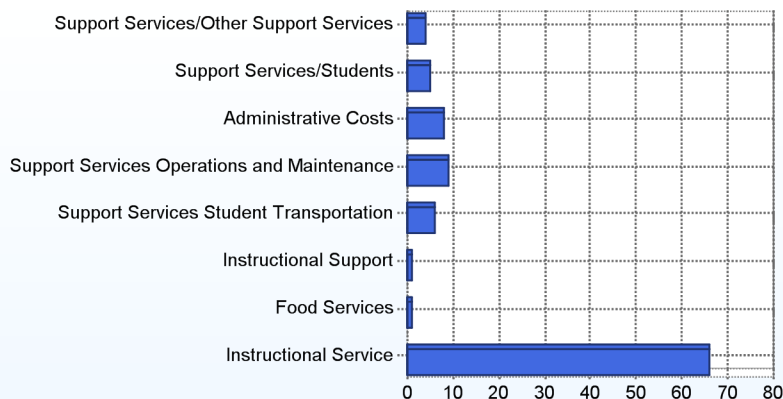
School Finances

District Expenditure per Pupil (2010-2011): \$9,762

District Sources of Revenue (2010-2011)



Percent District Allocation of Current Expenses by Category (2010-2011)



School Salary Allocation

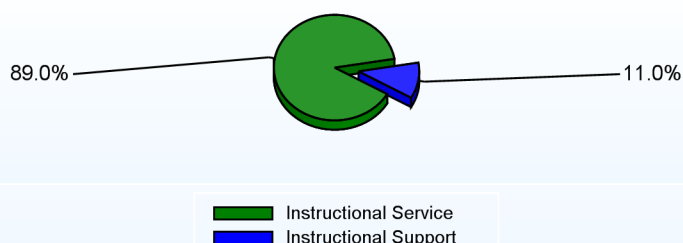
Instructional Service

	2012
Teachers	21.6%
Instructional Support	53.3%
Pupil Support	14.1%
Total	89.0%

Instructional Support

	2012
Administration	6.4%
Secretaries	2.0%
Maintenance	2.6%
Total	11.0%

Instructional vs. Support (2011-2012)



For further information and detailed reports, visit

<http://profiles.doe.k12.de.us>

or contact your local school district office.

Glossary: <http://profiles.doe.k12.de.us/glossary.aspx>



Delaware Department of Education

John G. Townsend Building
401 Federal Street, Suite #2
Dover, Delaware, 19901 - 3639
Phone: (302) 735-4000