



**District:** Brandywine School District

**Address:** 1311 Brandywine Boulevard, Wilmington DE 19809

**School District Superintendent:** Mark Holodick

**Telephone:** (302) 793-5000

**Web:** www.bsd.k12.de.us

## School Board Members

**Olivia Johnson-Harris, President**

**Ralph Ackerman**

**Audrey Noble**

**John Skrobot**

**Patricia Hearn, Vice President**

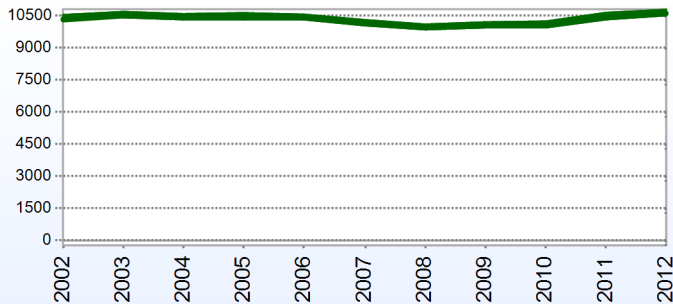
**Joseph Brumskill**

**Cheryl Siskin**

**Mark Holodick, Executive Secretary**

## District Information

### Enrollment History



### Students Who Reside in the District

	<b>2012</b>
Number of Students in Public Schools (Non Charter)	10,801
Percent of Students in Public Schools (Non Charter)	100%

### Fall Enrollment

	<b>2011</b>	<b>2012</b>
Pre-Kindergarten	134	157
Kindergarten	806	795
Grade 1	827	840
Grade 2	782	824
Grade 3	778	811
Grade 4	820	788
Grade 5	794	828
Grade 6	831	848
Grade 7	832	840
Grade 8	807	827
Grade 9	879	924
Grade 10	837	768
Grade 11	782	763
Grade 12	748	788
<b>Total</b>	<b>10,657</b>	<b>10,801</b>

### Enrollment by Race/Ethnicity

	<b>2009</b>	<b>2010</b>
American Indian	0.2%	0.1%
African American	39.7%	38.4%
Asian American	4.8%	5.0%
Hispanic	3.7%	4.1%
White	51.7%	52.3%

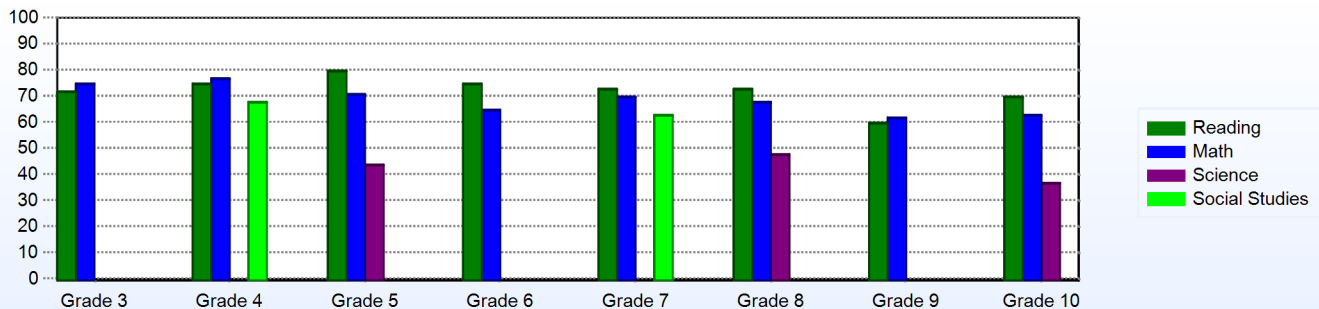
### Advanced Placement (AP)

	<b>2011</b>
Advanced Placement Courses	53
No. of Students Enrolled	668
No. of Exams Taken	464
Total No. of Exams Passed	220

### Other Student Characteristics

	<b>2011</b>	<b>2012</b>
English Language Learner	3.5%	3.4%
Low Income	41.9%	42.7%
Special Education	11.4%	10.7%
Enrolled for Full Year	94.6%	N/A%

## Percentage of Students Meeting State Standards



## District Staff

## Number of Staff

	<b>2012</b>
Teachers	758
Librarians	14
Instructional Support	91
Pupil Support	87
Administrators	84
Secretaries	159
Food Service	105
Maintenance	125
Not Classified	5
<b>Total</b>	<b>1,428</b>

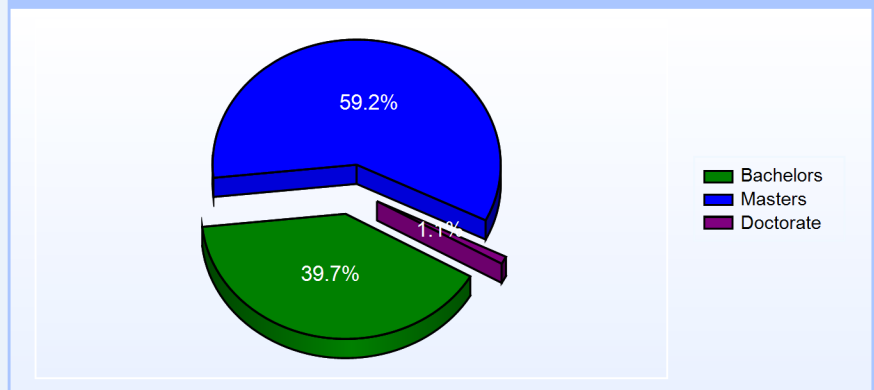
## Percentage of Classes Taught by Highly Qualified Teachers

	<b>Total Classes</b>	<b>% Highly Qualified</b>
English	166	100.0%
Reading/ Language Arts	131	100.0%
Arts	335	100.0%
Foreign Languages	141	93.6%
Science	258	100.0%
Mathematics	299	99.3%
Geography	24	83.3%
Civics & Government	7	100.0%
Social Studies	64	96.9%
History	148	100.0%
Elementary General	280	99.3%

## School Choice

	<b>2013</b>
Number of Schools with Choice Students:	15
Number of Local Choice Students: (choice students from the same district)	1,169
Number of State Choice Students: (choice students from another district)	564
Number of Federal Choice Students: (NCLB School Under Improvement)	1
Number of Federal Choice Students: (NCLB Unsafe School)	0
Number of Federal Choice Students: (NCLB Victim of a Violent Felony)	0

## Education Level



## Graduation Rate - ESEA 4 Year Adjusted

	<b>2010</b>	<b>2011</b>
	<b>ESEA</b>	<b>ESEA</b>
All Students	80.1%	81.6%
American Indian	100.0%	50.0%
African American	70.5%	76.2%
Asian American	84.2%	92.6%
Hispanic	69.6%	73.9%
White	87.5%	85.6%
Multi-Racial		80.0%
English Language Learner	64.7%	78.9%
Special Education	49.1%	51.8%
Low Income	65.7%	71.6%

## Year End Position

	<b>Year-End Balance</b>	<b>Expenditures</b>	<b>Percentage</b>
<b>2007</b>		\$126,454,292.00	
<b>2008</b>	\$4,417,228.00	\$130,676,389.00	3.4%
<b>2009</b>	\$3,605,465.00	\$138,017,536.00	2.6%
<b>2010</b>	\$3,634,928.00	\$139,166,099.00	2.6%
<b>2011</b>	\$3,936,882.00	\$139,712,808.00	2.8%

## Persistently Dangerous School

The school district has no "Persistently Dangerous Schools"

## District Information

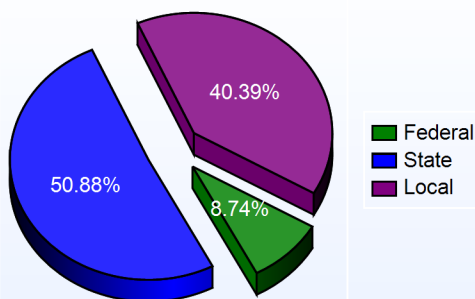
District DropOut Information						
	2009		2010		2011	
	Count	Percent	Count	Percent	Count	Percent
District	193	5.8%	83	2.6%	66	2.0%

Delaware Accountability		
<u>School Category</u>	<u>School</u>	<u>AYP</u>
<b>Elementary</b>	Carrcroft Elementary School	Met
	Claymont Elementary School	Met
	Forwood Elementary School	Met
	Hanby Elementary School	Met
	Harlan (David W. ) Elementary School	Met
	Lancashire Elementary School	Met
	Lombardy Elementary School	Met
	Maple Lane Elementary School	Met
	Mount Pleasant Elementary School	Met
<b>Middle</b>	duPont (Pierre S.) Middle School	Not Met
	Springer Middle School	Met
	Talley Middle School	Not Met
<b>High School</b>	Brandywine High School	Not Met
	Concord High School	Met
	Mount Pleasant High School	Met

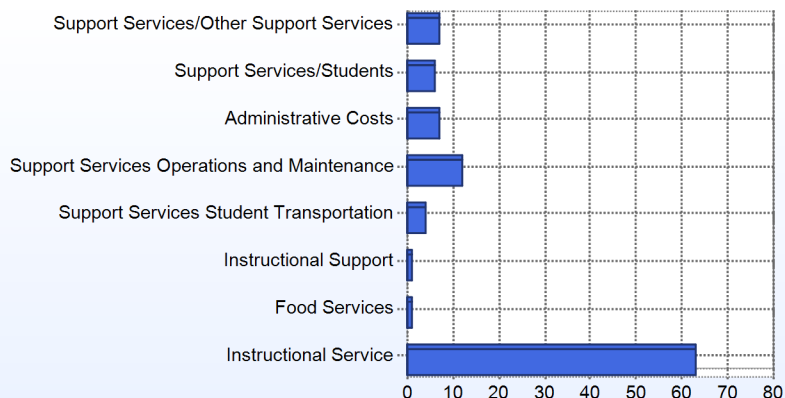
## School Finances

District Expenditure per Pupil: \$13,250

## District Sources of Revenue



## Percent District Allocation of Current Expenses by Category



## District Salary Allocation

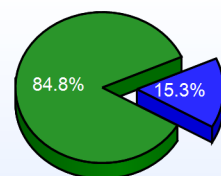
## Instructional Service

	2012
Teachers	72.1%
Librarians	1.4%
Instructional Support	2.9%
Pupil Support	8.4%
Total	84.8%

## Instructional Support

	2012
Administration	5.9%
Secretaries	2.2%
Food Services	2.1%
Maintenance	4.9%
Not Classified	0.2%
Total	15.3%

## Instructional Vs Support



■ Instructional Service  
■ Instructional Support

## Scheduled Teacher Salaries

	Bachelor			Master			Doctorate		
	4 years or Less	15-19 Years	30 Years or More	4 years or Less	15-19 Years	30 Years or More	4 years or Less	15-19 Years	30 Years or More
Scheduled Teacher Salaries	\$42,019	\$62,231	\$66,244	\$50,185	\$75,569	\$78,216	\$86,173	\$84,952	\$87,273

For further information and detailed reports, visit

<http://profiles.doe.k12.de.us>

or contact your local district office.



## Delaware Department of Education

John G. Townsend Building  
 401 Federal Street, Suite #2  
 Dove, Delaware, 19901 - 3639  
 Phone: (302) 735-4000

**District:** Brandywine School District  
**Address:** 2523 Berwyn Road, Wilmington DE 19810  
**Principal:** Veronica Wilkie  
**AYP:** Met

**Telephone:** (302) 479-2220  
**Web:** [www.brandywineschools.org/brandywood/site/](http://www.brandywineschools.org/brandywood/site/)

## School Demographics

Fall Enrollment		
	2011	2012
Kindergarten	90	94
Grade 1	86	89
Grade 2	77	89
Grade 3	80	75
Grade 4	95	83
Grade 5	93	96
Total	521	526

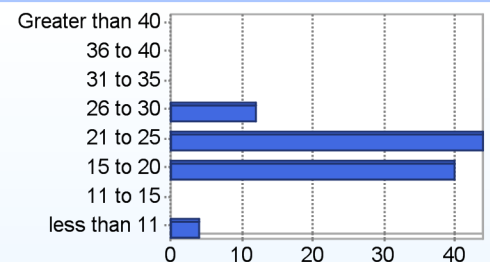
Enrollment by Race/Ethnicity		
	2011	2012
African American	22.1%	24.5%
American Indian	0.4%	0.2%
Asian	7.1%	8.4%
Hawaiian		0.2%
Hispanic/Latino	1.9%	2.9%
White	68.5%	63.7%
Multi-Racial		0.2%

Other Student Characteristics		
	2011	2012
English Language Learner	3.8%	4.2%
Low Income	25.1%	28.3%
Special Education	10.7%	9.9%
Enrolled for Full Year	95.4%	N/A

Recently Arrived ELL Students	
	2012
Number of Students Not Tested on ELA Assessment	2

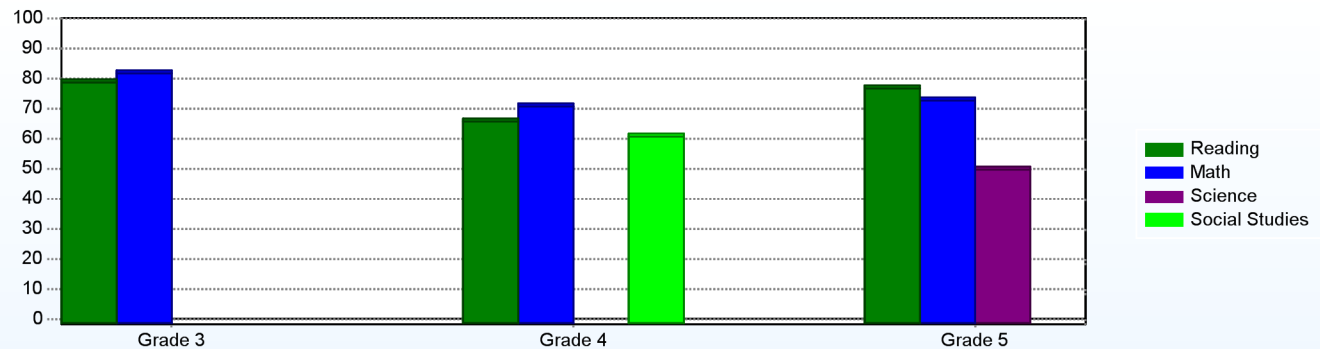
School Promotion by Grade	
	2011
Kindergarten	98.9%
Grade 1	100.0%
Grade 2	98.7%
Grade 3	97.5%
Grade 4	100.0%
Grade 5	100.0%

Class Size (Percentage by Range) (2011-2012)



## Student Achievement

Percentage of Students Meeting State Standards (2011-2012)



## Exemplary Programs

The Instructional Support Team (IST) is an innovative program whose goals are to maximize individual student success in the regular classroom, while at the same time serving as a screening process for students who may be in need of special education services. The program shifts the critical question in education from asking, "What's wrong with the student?" to asking, "What resources can we use to increase the student's chances for success?" This team approach provides for greater cohesiveness, coordination, and instructional continuity, and complements existing curriculum and instructional programs.

Response to Intervention (RTI) is a multi-step approach to providing services and interventions to struggling learners at increasing levels of intensity. In addition to classroom instruction, struggling students work in small groups on specific areas to enhance their particular area of difficulty.

## Student - School Safety and Discipline

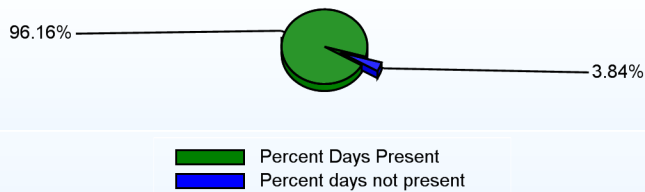
## Number of Reported Offenses (2011-2012)

	<u>School</u>	<u>District</u>	<u>State</u>
School Crimes (Title 14, Delaware Code, §4112)	6	124	957
Department of Education (DOE) Offenses	95	1544	10291
All School Safety Policy in Place	Yes		

## Suspensions and Expulsions

	<u>2012</u>
Number of Suspensions	143
Number of Expulsions	0
Count of Students Suspended/Expelled	50
September 30 Enrollment	526
Percent of Students Suspended/Expelled	10%
District Percentage	16%
State Percentage	15%

## Percent Days Present (2011-2012)



## Our Staff

## Number of Instructional Staff

	<u>2012</u>
Teachers	35
Librarians	1
Pupil Support	3
Total	38

## Staff by Race/Ethnicity

	<u>2012</u>
American Indian	0.0%
African American	7.7%
Asian American	0.0%
Hispanic	0.0%
White	92.3%

## Staffing Ratios

	<u>2012</u>
Students Per Teacher	15
Students Per Administrator	263
Students Per Instructional Staff	14
Students Per Pupil Support Staff	195
School Staff Per Administrator	24

## Staff Qualifications

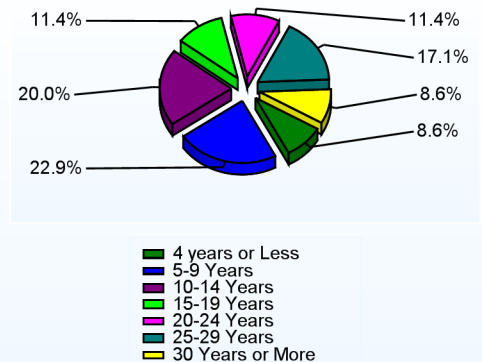
## Percentage of Classes Taught by Highly Qualified Teachers (2011-2012)

	<u>Total Classes</u>	<u>% Highly Qualified</u>	<u>% Not Highly Qualified</u>
Arts	2	100.0%	0.0%
Elementary General	25	100.0%	0.0%

## Education Level

	<u>2012</u>
Percent with Masters Degree and Above	64.3%
Percent Holding National Board for Professional Teaching Standards	5.4%

## Years of Teaching Experience (2011-2012)

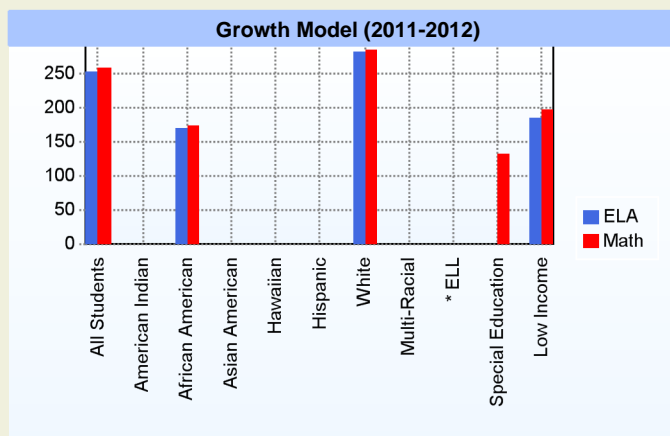
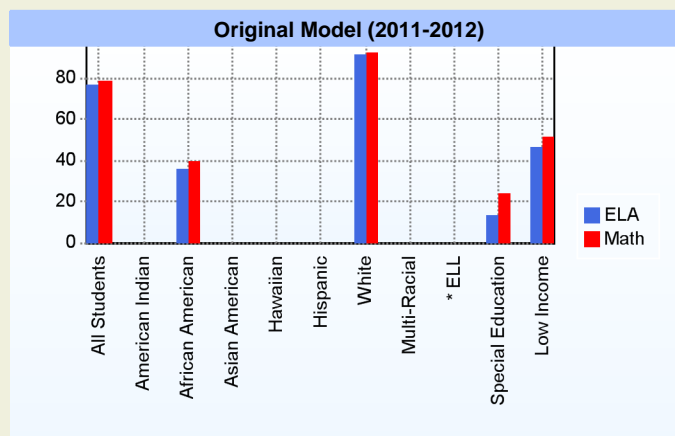


## Curriculum Highlights

At Hanby Elementary we believe that students do not learn in isolation, therefore several curriculum areas are implemented in each subject. Our staff utilizes the computer lab as a means of teaching and reinforcing Language Arts/Reading and Math skills. Our art, music, library science and physical education staff collaborates with the classroom teachers to bring what is being taught in the classrooms to their medium. During a typical social studies unit students will learn about the topic in their classroom, conduct additional research in library, draw a picture or do a project on the topic in art and learn some of the songs of that time in music. Our physical education classes can be seen learning time and number facts while rotating from exercise stations. This multi-step process gives our students the opportunity to review and reinforce other areas of knowledge. Be it fun day, an art show, name that book or a concert, you can always find math and reading incorporated into the activ

## AYP

Only groups with greater than 40 students are reported



\* English Language Learner

\* English Language Learner

## % Test Participation (2011-2012)

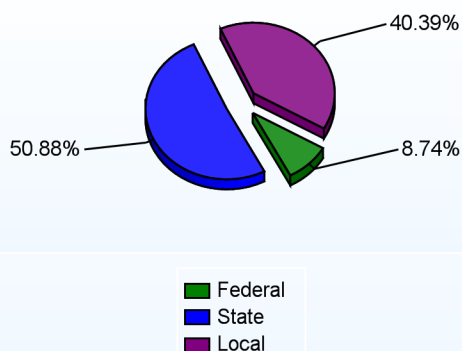
	<u>ELA</u>	<u>Math</u>	<u>ELA Goal</u>	<u>Math Goal</u>
All Students	100	100	95	95
American Indian	*	*	95	95
African American	100	100	95	95
Asian American	*	*	95	95
Hawaiian	*	*	95	95
Hispanic	*	*	95	95
White	100	100	95	95
Multi-Racial	*	*	95	95
English Language Learner	*	*	95	95
Special Education	100	100	95	95
Low Income	100	100	95	95



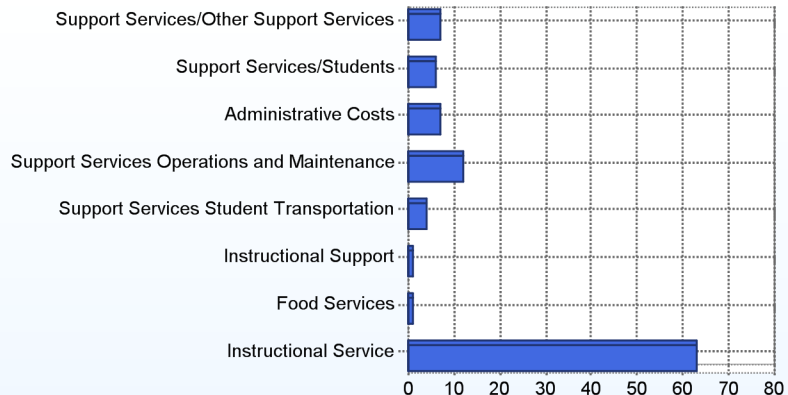
### School Finances

District Expenditure per Pupil (2010-2011): \$13,250

District Sources of Revenue (2010-2011)



Percent District Allocation of Current Expenses by Category (2010-2011)



### School Salary Allocation

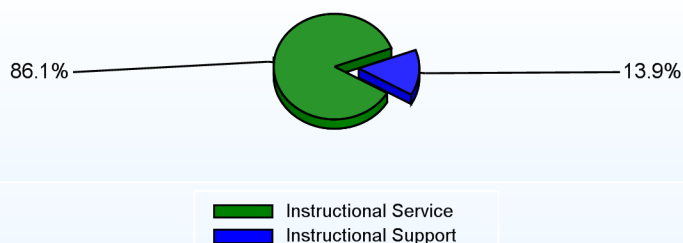
Instructional Service

	2012
Teachers	74.5%
Librarians	2.6%
Instructional Support	2.2%
Pupil Support	6.8%
Total	86.1%

Instructional Support

	2012
Administration	6.7%
Secretaries	2.4%
Food Services	1.3%
Maintenance	3.5%
Total	13.9%

Instructional vs. Support (2011-2012)



For further information and detailed reports, visit

<http://profiles.doe.k12.de.us>

or contact your local school district office.

Glossary: <http://profiles.doe.k12.de.us/glossary.aspx>



#### Delaware Department of Education

John G. Townsend Building  
401 Federal Street, Suite #2  
Dover, Delaware, 19901 - 3639  
Phone: (302) 735-4000



**District:** Brandywine School District  
**Address:** 503 Crest Road, Wilmington DE 19803  
**Principal:** Carol Norman  
**AYP:** Met

**Telephone:** (302) 762-7165  
**Web:** [www.brandywineschools.org/carrcroft/site/](http://www.brandywineschools.org/carrcroft/site/)

## School Demographics

Fall Enrollment		
	2011	2012
Kindergarten	81	93
Grade 1	70	101
Grade 2	72	60
Grade 3	101	80
Grade 4	71	87
Grade 5	93	72
Total	488	493

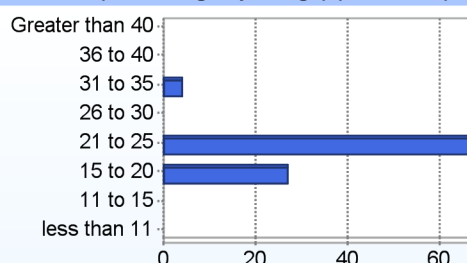
Recently Arrived ELL Students	
	2012
Number of Students Not Tested on ELA Assessment	0

Enrollment by Race/Ethnicity		
	2011	2012
African American	43.6%	41.8%
American Indian	0.2%	0.2%
Asian	3.3%	3.4%
Hispanic/Latino	3.5%	3.4%
White	48.2%	49.3%
Multi-Racial	1.2%	1.8%

School Promotion by Grade	
	2011
Kindergarten	97.5%
Grade 1	85.7%
Grade 2	100.0%
Grade 3	99.0%
Grade 4	100.0%
Grade 5	100.0%

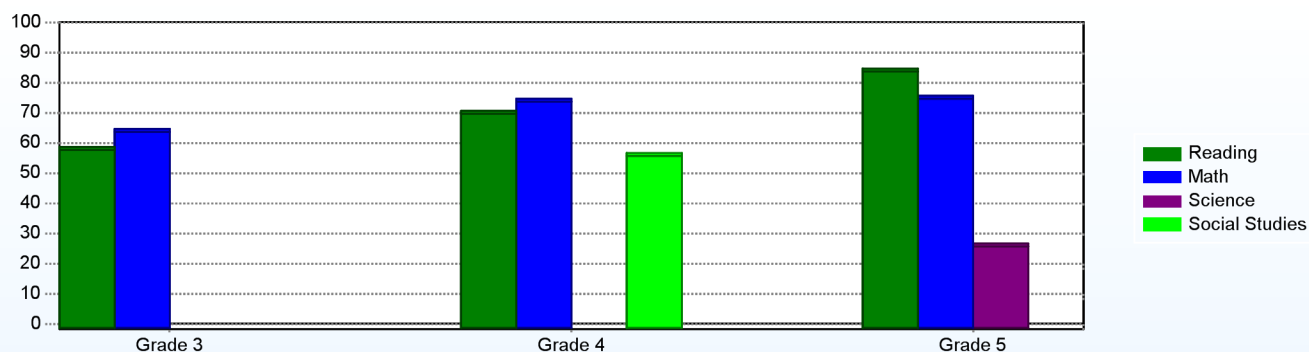
Other Student Characteristics		
	2011	2012
English Language Learner	2.0%	2.0%
Low Income	44.7%	47.5%
Special Education	11.7%	10.5%
Enrolled for Full Year	95.1%	N/A

Class Size (Percentage by Range) (2011-2012)



## Student Achievement

Percentage of Students Meeting State Standards (2011-2012)



## Exemplary Programs

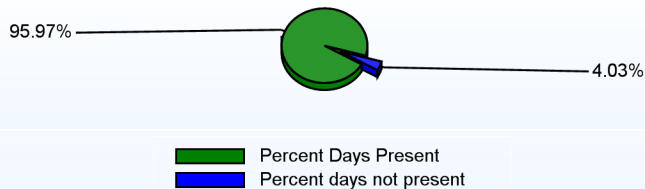
Carrcroft School has diverse programs to help meet the academic, social, and emotional needs of children including Odyssey of the Mind, an educational program that provides creative problem-solving opportunities; Positive Behavior System, students meeting the expectations of being responsible, respectful, peaceful, and safe; Instructional Support Team, collegial support to better meet the needs of all students; Responsible Riders, to promote safe bus riders; Creative Mentoring, focused on nurturance from a caring adult; Compass Learning, aligned intervention/enrichment with classroom instruction and state standards; Sunshine Math, a challenging problem solving program and additional reading activities to encourage and motivate readers, including Book It, M.S. Read-a-Thon, Accelerated Reader, and Delaware Diamonds. In addition, Carrcroft also offers Leadership Core, Geography Bee, Spelling Bee, and St. Jude Math-a-Thon.

## Student - School Safety and Discipline

## Number of Reported Offenses (2011-2012)

	<u>School</u>	<u>District</u>	<u>State</u>
School Crimes (Title 14, Delaware Code, §4112)	4	124	957
Department of Education (DOE) Offenses	32	1544	10291
All School Safety Policy in Place	Yes		

## Percent Days Present (2011-2012)



## Suspensions and Expulsions

	<u>2012</u>
Number of Suspensions	58
Number of Expulsions	0
Count of Students Suspended/Expelled	40
September 30 Enrollment	493
Percent of Students Suspended/Expelled	8%
District Percentage	16%
State Percentage	15%

## Our Staff

## Number of Instructional Staff

	<u>2012</u>
Teachers	32
Librarians	1
Pupil Support	3
Total	36

## Staff by Race/Ethnicity

	<u>2012</u>
American Indian	0.0%
African American	7.9%
Asian American	0.0%
Hispanic	0.0%
White	92.1%

## Staffing Ratios

	<u>2012</u>
Students Per Teacher	16
Students Per Administrator	247
Students Per Instructional Staff	13
Students Per Pupil Support Staff	154
School Staff Per Administrator	24

## Staff Qualifications

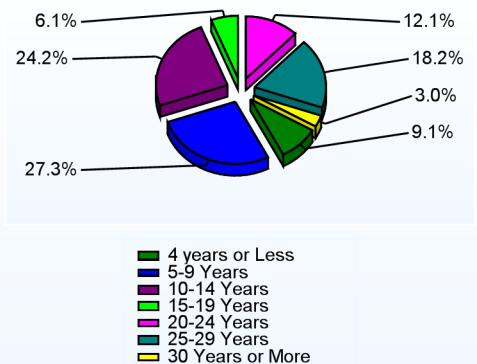
## Percentage of Classes Taught by Highly Qualified Teachers (2011-2012)

	<u>Total Classes</u>	<u>% Highly Qualified</u>	<u>% Not Highly Qualified</u>
Elementary General	22	100.0%	0.0%

## Education Level

	<u>2012</u>
Percent with Masters Degree and Above	54.8%
Percent Holding National Board for Professional Teaching Standards	7.9%

## Years of Teaching Experience (2011-2012)



## Curriculum Highlights

The core curriculum at Carrcroft is taught using the Harcourt Brace anthology reading program, Singapore math, Open Court, and Storytown. Social Studies topics are taught with Scott Foresman, and all teachers use the Smithsonian science kits.

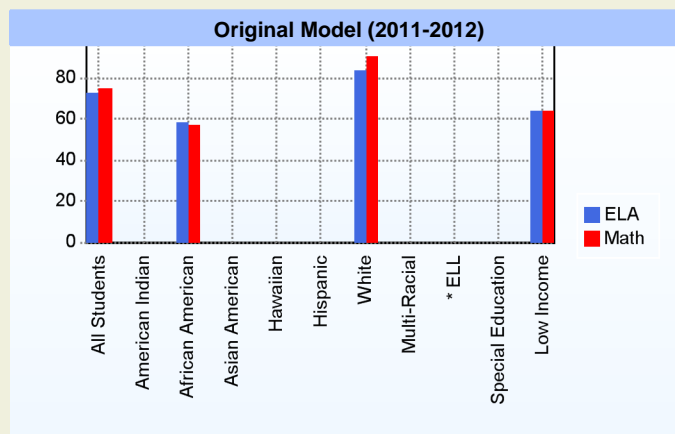
Instruction is guided by state standards, and the district and building improvement plans. Goals are established based on analyzing data from many sources (formative and summative curriculum assessments, DCAS, and STAR Reading and Math) are used to refine and target instruction.

Teachers select and implement strategies that reflect current research. To reach all learners, teachers employ best practice strategies of flexible and/or leveled grouping, guided and independent practice, vocabulary instruction, and reading comprehension strategies.

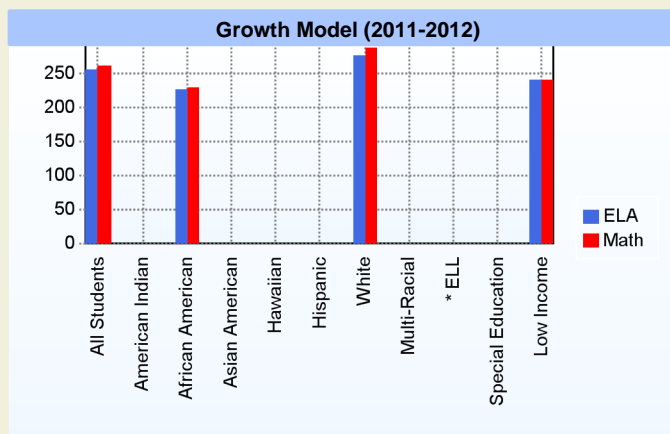
In addition to whole group and small group leveled reading instruction, supplemental small group instruction may be provided by a reading specialist.

## AYP

Only groups with greater than 40 students are reported



\* English Language Learner



\* English Language Learner

## % Test Participation (2011-2012)

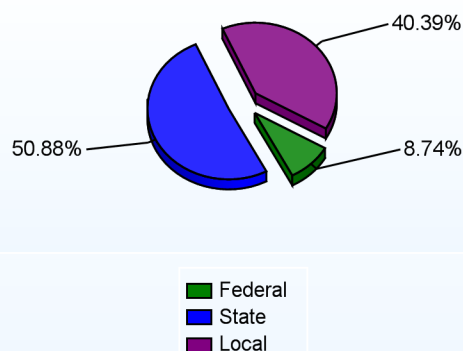
	<u>ELA</u>	<u>Math</u>	<u>ELA Goal</u>	<u>Math Goal</u>
All Students	100	100	95	95
American Indian	*	*	95	95
African American	100	100	95	95
Asian American	*	*	95	95
Hawaiian	*	*	95	95
Hispanic	*	*	95	95
White	100	100	95	95
Multi-Racial	*	*	95	95
English Language Learner	*	*	95	95
Special Education	*	*	95	95
Low Income	100	100	95	95



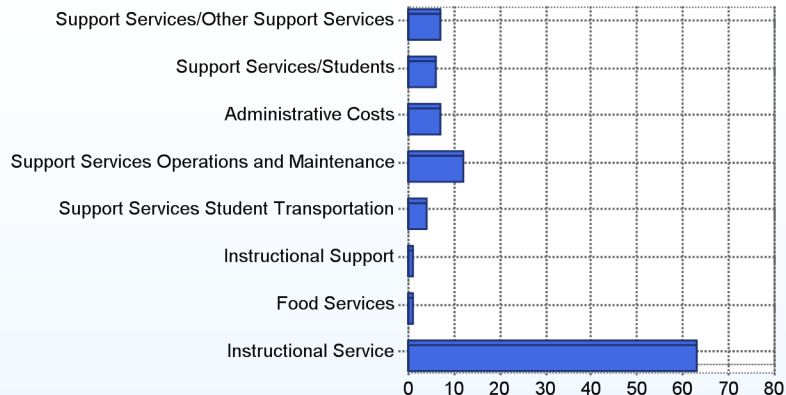
### School Finances

District Expenditure per Pupil (2010-2011): \$13,250

District Sources of Revenue (2010-2011)



Percent District Allocation of Current Expenses by Category (2010-2011)



### School Salary Allocation

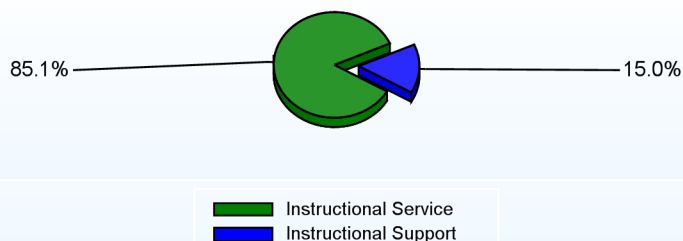
Instructional Service

	2012
Teachers	71.3%
Librarians	1.3%
Instructional Support	3.4%
Pupil Support	9.1%
Total	85.1%

Instructional Support

	2012
Administration	6.7%
Secretaries	3.2%
Food Services	1.3%
Maintenance	3.8%
Total	15.0%

Instructional vs. Support (2011-2012)



For further information and detailed reports, visit

<http://profiles.doe.k12.de.us>

or contact your local school district office.

Glossary: <http://profiles.doe.k12.de.us/glossary.aspx>



#### Delaware Department of Education

John G. Townsend Building  
401 Federal Street, Suite #2  
Dover, Delaware, 19901 - 3639  
Phone: (302) 735-4000

**District:** Brandywine School District  
**Address:** 1900 Westminster Drive, Wilmington DE 19810  
**Principal:** Enid Van Such  
**AYP:** Met

**Telephone:** (302) 475-3956  
**Web:** [www.brandywineschools.org/forwood/site/](http://www.brandywineschools.org/forwood/site/)

## School Demographics

Fall Enrollment		
	2011	2012
Kindergarten	65	77
Grade 1	68	63
Grade 2	74	72
Grade 3	68	79
Grade 4	89	74
Grade 5	61	90
Total	425	455

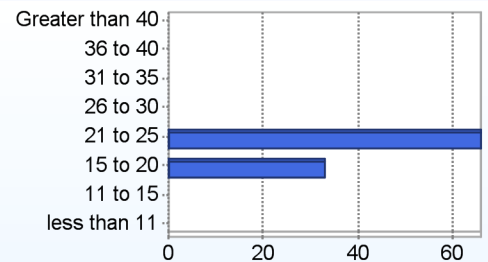
Recently Arrived ELL Students	
	2012
Number of Students Not Tested on ELA Assessment	1

Enrollment by Race/Ethnicity		
	2011	2012
African American	18.1%	17.4%
Asian	6.6%	9.2%
Hispanic/Latino	2.6%	5.5%
White	72.7%	66.6%
Multi-Racial		1.3%

School Promotion by Grade	
	2011
Kindergarten	93.8%
Grade 1	98.5%
Grade 2	98.6%
Grade 3	98.5%
Grade 4	100.0%
Grade 5	100.0%

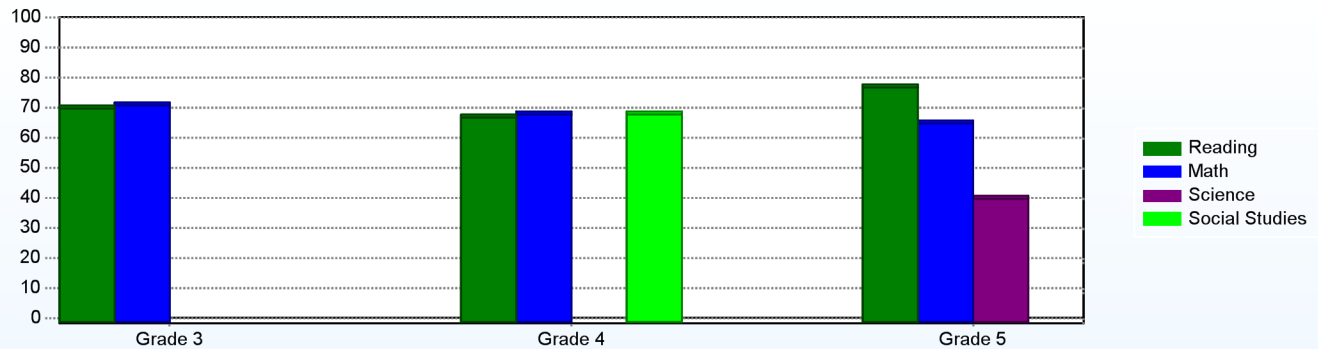
Other Student Characteristics		
	2011	2012
English Language Learner	5.4%	7.7%
Low Income	29.2%	30.5%
Special Education	9.6%	9.0%
Enrolled for Full Year	96.7%	N/A

Class Size (Percentage by Range) (2011-2012)



## Student Achievement

Percentage of Students Meeting State Standards (2011-2012)



## Exemplary Programs

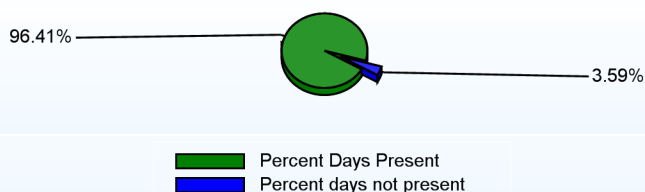
Monthly Family Engagement Activities abound at Forwood Elementary School to involve students and their families in learning during and beyond the school day, inclusive of Accelerated Reader Nights, Poetry Shares, Classroom Presentations, Singapore Math Nights, Family Science Nights, Author Teas, and our Annual Science Fair. Students also engage in intergenerational activities and develop friendships with our neighbors through our Community Outreach Partnership with Forwood Manor. Our Positive Behavior Support programming encourages students to model safe, responsible and respectful behavior daily. Social Thinking Skills groups teach our students strategies for developing positive peer relationships, effective communication skills, and conflict resolution/problem solving techniques. Leadership and enrichment opportunities are provided through Leader Corp and participation in the Scripps Spelling Bee. After-school enrichment opportunities include Young Rembrandts and Girls On the Run.

## Student - School Safety and Discipline

## Number of Reported Offenses (2011-2012)

	<u>School</u>	<u>District</u>	<u>State</u>
School Crimes (Title 14, Delaware Code, §4112)	2	124	957
Department of Education (DOE) Offenses	17	1544	10291
All School Safety Policy in Place	Yes		

## Percent Days Present (2011-2012)



## Suspensions and Expulsions

	<u>2012</u>
Number of Suspensions	31
Number of Expulsions	0
Count of Students Suspended/Expelled	18
September 30 Enrollment	455
Percent of Students Suspended/Expelled	4%
District Percentage	16%
State Percentage	15%

## Our Staff

## Number of Instructional Staff

	<u>2012</u>
Teachers	30
Librarians	1
Pupil Support	3
Total	34

## Staff by Race/Ethnicity

	<u>2012</u>
American Indian	0.0%
African American	5.6%
Asian American	0.0%
Hispanic	2.8%
White	91.7%

## Staffing Ratios

	<u>2012</u>
Students Per Teacher	15
Students Per Administrator	455
Students Per Instructional Staff	14
Students Per Pupil Support Staff	152
School Staff Per Administrator	41

## Staff Qualifications

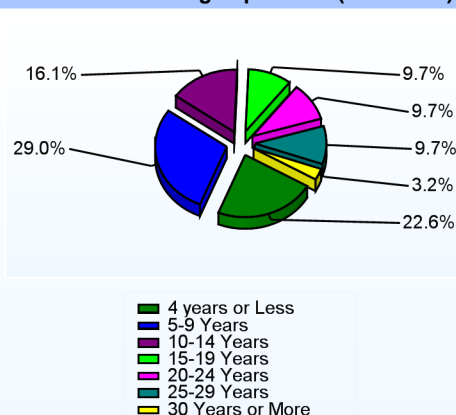
## Percentage of Classes Taught by Highly Qualified Teachers (2011-2012)

	<u>Total Classes</u>	<u>% Highly Qualified</u>	<u>% Not Highly Qualified</u>
Arts	2	100.0%	0.0%
Elementary General	23	95.7%	4.3%

## Education Level

	<u>2012</u>
Percent with Masters Degree and Above	52.6%
Percent Holding National Board for Professional Teaching Standards	14.3%

## Years of Teaching Experience (2011-2012)

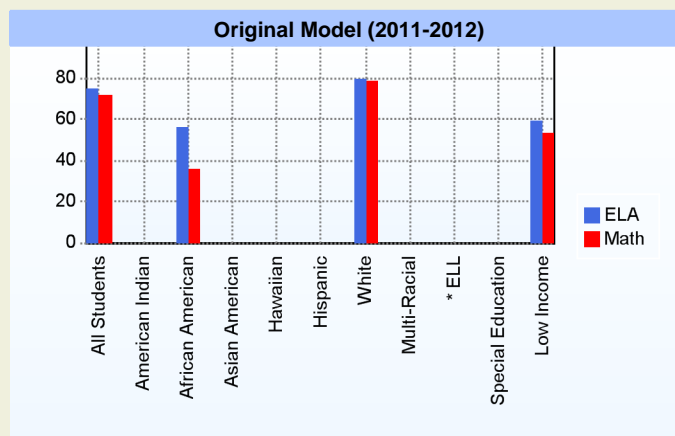


## Curriculum Highlights

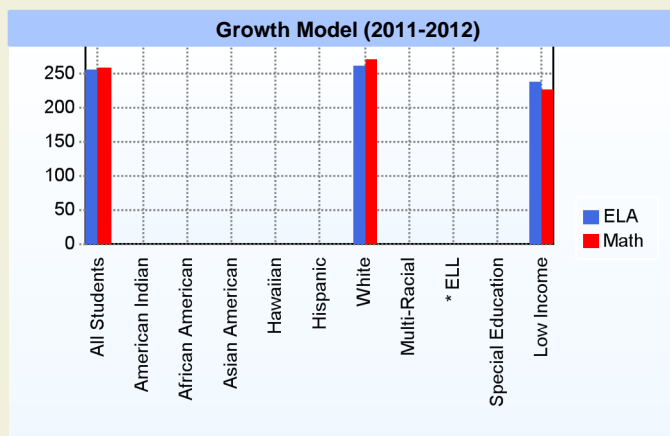
Classroom instruction, aligned with the Common Core State Standards, is designed to develop strong readers and mathematically minded problem solvers who are able to communicate effectively, both orally and in writing. All students receive instruction in reading/language arts, math, science, social studies, music, art, library science, physical education, and computer science. Curriculum and instructional resources/strategies utilized include KidWriting, StoryTown Reading Program, Open Court Phonics, Harcourt Reading Program, 90 minute Language Arts Block, Paratore Model for Reading, Singapore Math Program, Smithsonian Science Kits, Scott Foresman Social Studies Series, and the Learning Focused Solutions Framework. Collegial collaboration among members of our Instructional Support, Response to Intervention, and Targeted Teams guides interventions and support to address the diverse needs of our students. Teachers utilize the web-based Compass Learning site to support, extend and enhance.

## AYP

Only groups with greater than 40 students are reported



\* English Language Learner



\* English Language Learner

## % Test Participation (2011-2012)

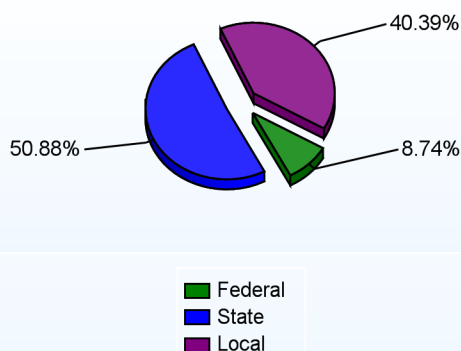
	ELA	Math	ELA Goal	Math Goal
All Students	100	100	95	95
American Indian	*	*	95	95
African American	100	100	95	95
Asian American	*	*	95	95
Hawaiian	*	*	95	95
Hispanic	*	*	95	95
White	100	100	95	95
Multi-Racial	*	*	95	95
English Language Learner	*	*	95	95
Special Education	*	*	95	95
Low Income	100	100	95	95



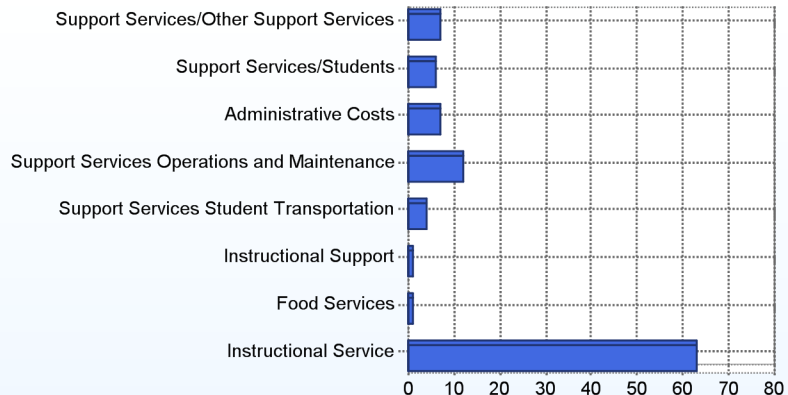
### School Finances

District Expenditure per Pupil (2010-2011): \$13,250

District Sources of Revenue (2010-2011)



Percent District Allocation of Current Expenses by Category (2010-2011)



### School Salary Allocation

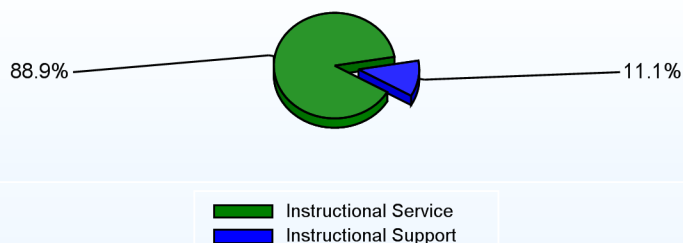
Instructional Service

	2012
Teachers	72.5%
Librarians	2.7%
Instructional Support	2.0%
Pupil Support	11.7%
Total	88.9%

Instructional Support

	2012
Administration	4.3%
Secretaries	1.9%
Food Services	0.8%
Maintenance	4.1%
Total	11.1%

Instructional vs. Support (2011-2012)



For further information and detailed reports, visit

<http://profiles.doe.k12.de.us>

or contact your local school district office.

Glossary: <http://profiles.doe.k12.de.us/glossary.aspx>



#### Delaware Department of Education

John G. Townsend Building  
401 Federal Street, Suite #2  
Dover, Delaware, 19901 - 3639  
Phone: (302) 735-4000



**District:** Brandywine School District  
**Address:** 2000 Naamans Road, Wilmington DE 19810  
**Principal:** Ned Gladfelter  
**AYP:** Met

**Telephone:** (302) 475-3990  
**Web:** [www.brandywineschools.org/lancashire/site/](http://www.brandywineschools.org/lancashire/site/)

## School Demographics

Fall Enrollment		
	2011	2012
Kindergarten	90	90
Grade 1	97	84
Grade 2	79	103
Grade 3	76	86
Grade 4	80	73
Grade 5	88	82
Total	510	518

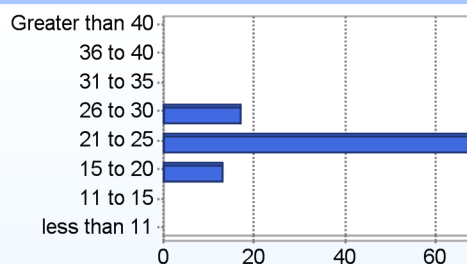
Enrollment by Race/Ethnicity		
	2011	2012
African American	25.9%	22.2%
American Indian	0.2%	0.2%
Asian	11.6%	11.2%
Hawaiian		0.2%
Hispanic/Latino	4.1%	5.6%
White	57.8%	59.5%
Multi-Racial	0.4%	1.2%

Other Student Characteristics		
	2011	2012
English Language Learner	4.1%	4.1%
Low Income	33.5%	34.2%
Special Education	9.2%	8.7%
Enrolled for Full Year	96.1%	N/A

Recently Arrived ELL Students	
	2012
Number of Students Not Tested on ELA Assessment	1

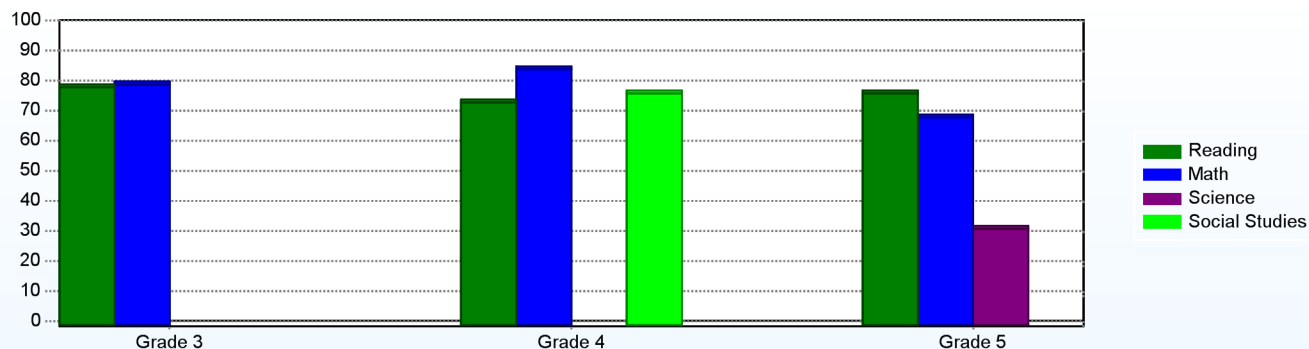
School Promotion by Grade	
	2011
Kindergarten	96.7%
Grade 1	99.0%
Grade 2	100.0%
Grade 3	100.0%
Grade 4	100.0%
Grade 5	100.0%

Class Size (Percentage by Range) (2011-2012)



## Student Achievement

Percentage of Students Meeting State Standards (2011-2012)



## Exemplary Programs

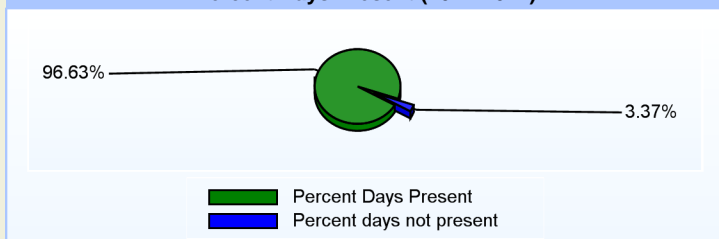
The school offers an outstanding, after-school enrichment program (Lancashire Enrichment Opportunities or LEO) which provides enrichment activities in the following areas: Bricks4Kidz Lego Group, Chess, Chinese Language Lessons, Cubscouts, Girls on the Run, Dance, Musical Theatre, Piano Keyboard Lessons, Young Rembrandts (Art), and Odyssey of the Mind.

## Student - School Safety and Discipline

## Number of Reported Offenses (2011-2012)

	<u>School</u>	<u>District</u>	<u>State</u>
School Crimes (Title 14, Delaware Code, §4112)		124	957
Department of Education (DOE) Offenses	73	1544	10291
All School Safety Policy in Place	Yes		

## Percent Days Present (2011-2012)



## Suspensions and Expulsions

	<u>2012</u>
Number of Suspensions	15
Number of Expulsions	0
Count of Students Suspended/Expelled	12
September 30 Enrollment	518
Percent of Students Suspended/Expelled	2%
District Percentage	16%
State Percentage	15%

## Our Staff

## Number of Instructional Staff

	<u>2012</u>
Teachers	31
Librarians	1
Pupil Support	3
Total	35

## Staff by Race/Ethnicity

	<u>2012</u>
American Indian	0.0%
African American	8.6%
Asian American	2.9%
Hispanic	0.0%
White	88.6%

## Staffing Ratios

	<u>2012</u>
Students Per Teacher	17
Students Per Administrator	259
Students Per Instructional Staff	15
Students Per Pupil Support Staff	207
School Staff Per Administrator	22

## Staff Qualifications

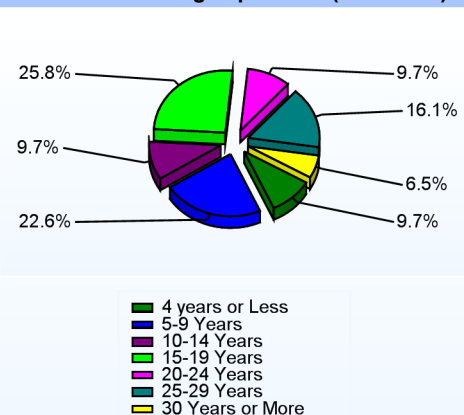
## Percentage of Classes Taught by Highly Qualified Teachers (2011-2012)

	<u>Total Classes</u>	<u>% Highly Qualified</u>	<u>% Not Highly Qualified</u>
Arts	2	100.0%	0.0%
Elementary General	23	100.0%	0.0%

## Education Level

	<u>2012</u>
Percent with Masters Degree and Above	62.2%
Percent Holding National Board for Professional Teaching Standards	5.4%

## Years of Teaching Experience (2011-2012)

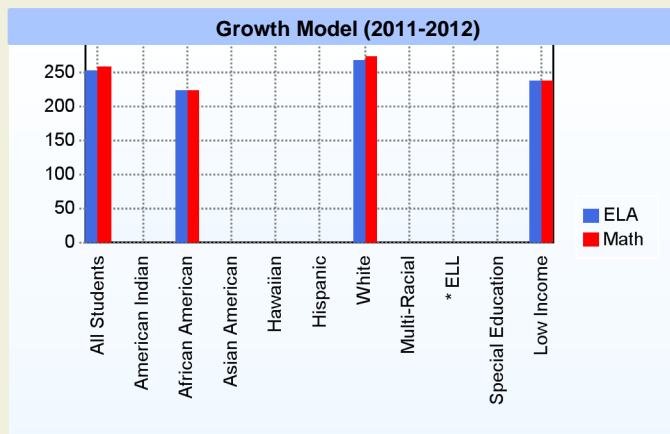
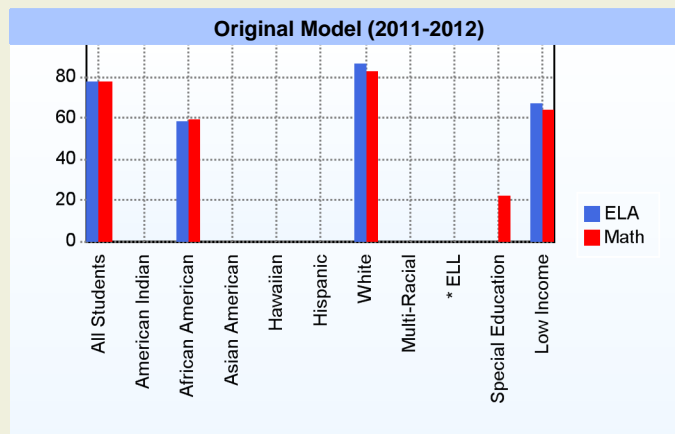


## Curriculum Highlights

Instruction is differentiated in each classroom so that students at all levels are challenged and enriched. The school is piloting the "Journeys" curriculum for reading and language arts during the 2012-13 school year. In addition, the Singapore Math curriculum is utilized in grades K-5.

## AYP

Only groups with greater than 40 students are reported



\* English Language Learner

\* English Language Learner

## % Test Participation (2011-2012)

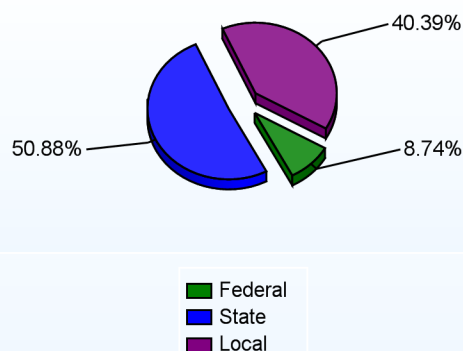
	<u>ELA</u>	<u>Math</u>	<u>ELA Goal</u>	<u>Math Goal</u>
All Students	100	100	95	95
American Indian	*	*	95	95
African American	100	100	95	95
Asian American	*	*	95	95
Hawaiian	*	*	95	95
Hispanic	*	*	95	95
White	100	100	95	95
Multi-Racial	*	*	95	95
English Language Learner	*	*	95	95
Special Education	*	*	95	95
Low Income	100	100	95	95



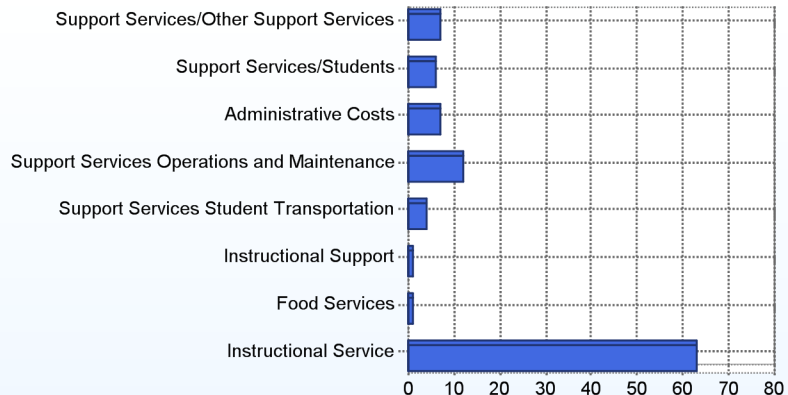
### School Finances

District Expenditure per Pupil (2010-2011): \$13,250

District Sources of Revenue (2010-2011)



Percent District Allocation of Current Expenses by Category (2010-2011)



### School Salary Allocation

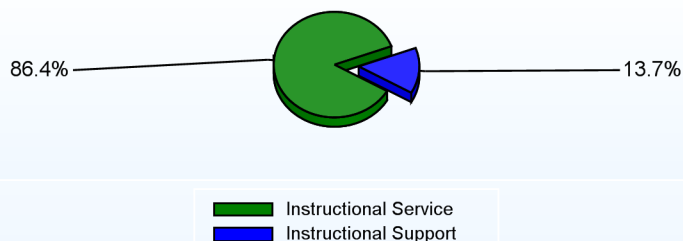
Instructional Service

	2012
Teachers	73.7%
Librarians	2.7%
Instructional Support	1.7%
Pupil Support	8.3%
Total	86.4%

Instructional Support

	2012
Administration	7.1%
Secretaries	1.5%
Food Services	1.5%
Maintenance	3.6%
Total	13.7%

Instructional vs. Support (2011-2012)



For further information and detailed reports, visit

<http://profiles.doe.k12.de.us>

or contact your local school district office.

Glossary: <http://profiles.doe.k12.de.us/glossary.aspx>



#### Delaware Department of Education

John G. Townsend Building  
401 Federal Street, Suite #2  
Dover, Delaware, 19901 - 3639  
Phone: (302) 735-4000

**District:** Brandywine School District  
**Address:** 412 Foulk Road, Wilmington DE 19803  
**Principal:** Lynn Sharps  
**AYP:** Met

**Telephone:** (302) 762-7190  
**Web:** [www.brandywineschools.org/lombardy/site/](http://www.brandywineschools.org/lombardy/site/)

## School Demographics

Fall Enrollment		
	2011	2012
Kindergarten	94	84
Grade 1	87	100
Grade 2	87	79
Grade 3	88	96
Grade 4	78	93
Grade 5	81	80
Total	515	532

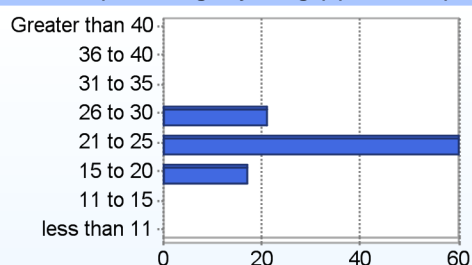
Recently Arrived ELL Students		
	2011	2012
Number of Students Not Tested on ELA Assessment		2

Enrollment by Race/Ethnicity		
	2011	2012
African American	21.9%	19.4%
American Indian		0.2%
Asian	7.0%	6.2%
Hispanic/Latino	4.9%	4.7%
White	64.1%	67.3%
Multi-Racial	2.1%	2.3%

School Promotion by Grade	
	2011
Kindergarten	93.6%
Grade 1	95.4%
Grade 2	98.9%
Grade 3	98.9%
Grade 4	100.0%
Grade 5	100.0%

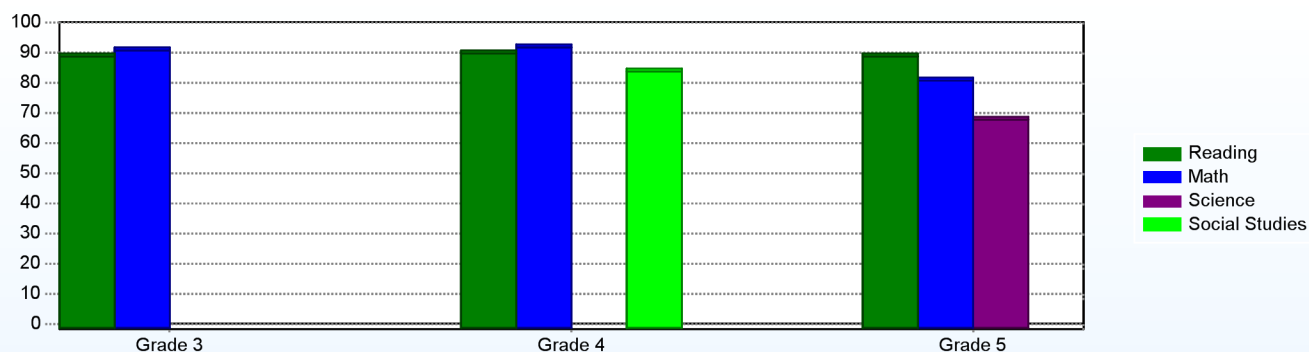
Other Student Characteristics		
	2011	2012
English Language Learner	6.4%	6.4%
Low Income	29.5%	29.5%
Special Education	10.3%	11.1%
Enrolled for Full Year	93.8%	N/A

Class Size (Percentage by Range) (2011-2012)



## Student Achievement

Percentage of Students Meeting State Standards (2011-2012)



## Exemplary Programs

Lombardy Elementary School is committed to offering the best educational experience for our diverse population by involving students in a variety of activities that challenge their academic and creative skills. We strive to build responsibility and promote teamwork and cooperation among our students. Utilization of curriculum and instruction aligned with State Standards ensures that our students are provided a high quality education. Use of formative assessment measures and ongoing data analysis allows us to make informed instructional decisions based on student needs. Research-based instructional strategies support differentiation to meet the learning styles of our students. Our staff works diligently to meet school goals by employing a framework of best teaching practices that focus on student success.

The following exemplary programs have been implemented to support our students: Accelerated Reader, Tiger Tutoring, Positive Behavior Support, Creative Mentoring.

## Student - School Safety and Discipline

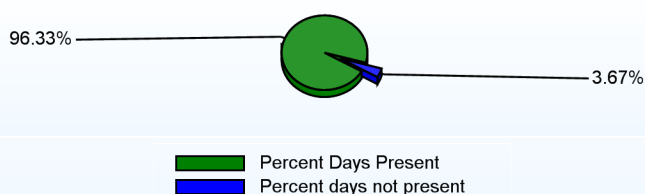
## Number of Reported Offenses (2011-2012)

	<u>School</u>	<u>District</u>	<u>State</u>
School Crimes (Title 14, Delaware Code, §4112)	1	124	957
Department of Education (DOE) Offenses	102	1544	10291
All School Safety Policy in Place	Yes		

## Suspensions and Expulsions

	<u>2012</u>
Number of Suspensions	87
Number of Expulsions	0
Count of Students Suspended/Expelled	31
September 30 Enrollment	532
Percent of Students Suspended/Expelled	6%
District Percentage	16%
State Percentage	15%

## Percent Days Present (2011-2012)



## Our Staff

## Number of Instructional Staff

	<u>2012</u>
Teachers	34
Librarians	1
Pupil Support	2
Total	37

## Staff by Race/Ethnicity

	<u>2012</u>
American Indian	0.0%
African American	2.7%
Asian American	2.7%
Hispanic	0.0%
White	94.6%

## Staffing Ratios

	<u>2012</u>
Students Per Teacher	16
Students Per Administrator	266
Students Per Instructional Staff	13
Students Per Pupil Support Staff	266
School Staff Per Administrator	25

## Staff Qualifications

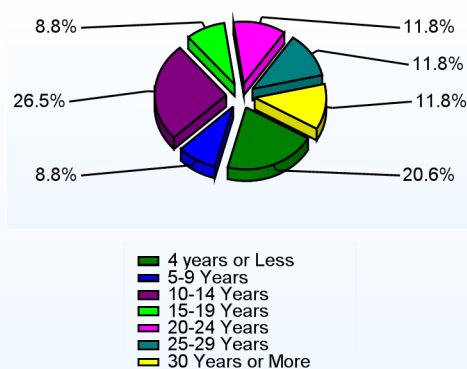
## Percentage of Classes Taught by Highly Qualified Teachers (2011-2012)

	<u>Total Classes</u>	<u>% Highly Qualified</u>	<u>% Not Highly Qualified</u>
Arts	2	100.0%	0.0%
Elementary General	25	100.0%	0.0%

## Education Level

	<u>2012</u>
Percent with Masters Degree and Above	44.2%
Percent Holding National Board for Professional Teaching Standards	8.3%

## Years of Teaching Experience (2011-2012)



## Curriculum Highlights

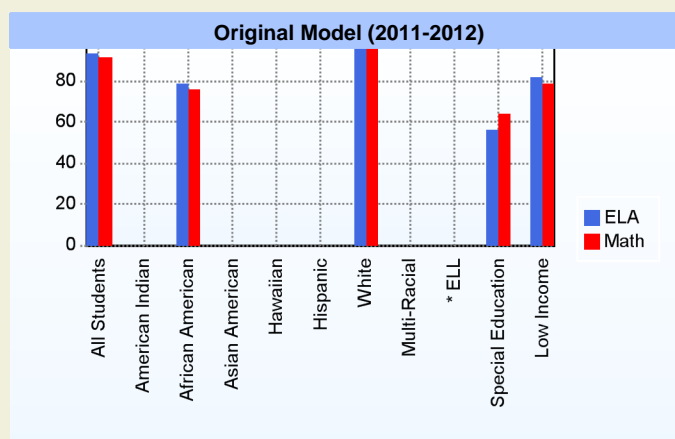
Our instruction is focused on developing strong readers that are mathematically minded problem solvers able to effectively communicate both orally and in writing. Students develop this knowledge and skills through instruction in Language Arts, Mathematics, Science, Social Studies, Art, Physical Education, Library, Music and Technology.

The following curricular programs are examples of resources/strategies used during instruction:

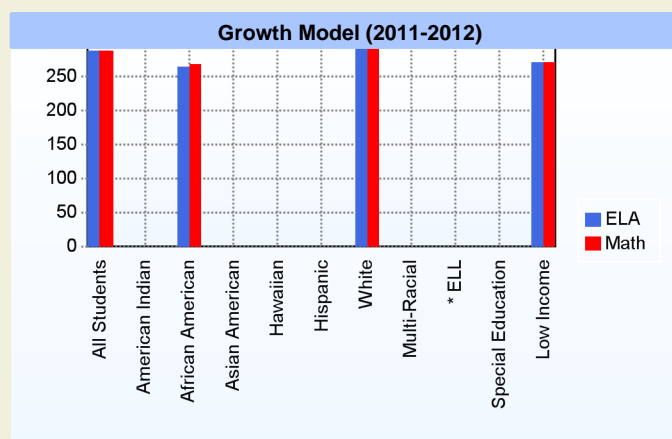
- 90 minute Language Arts block
- Paratore Model
- Singapore Math (K-5)
- Smithsonian/Foss Science (Inquiry-Based)
- Scott Foresman Social Studies Series
- Harcourt Journeys Reading Series
- Kid Writing
- Breakthrough to Literacy

## AYP

Only groups with greater than 40 students are reported



\* English Language Learner



\* English Language Learner

## % Test Participation (2011-2012)

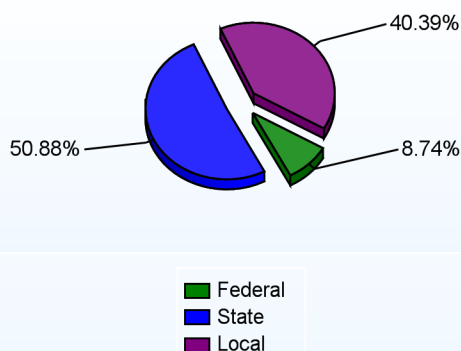
	ELA	Math	ELA Goal	Math Goal
All Students	100	100	95	95
American Indian	*	*	95	95
African American	100	100	95	95
Asian American	*	*	95	95
Hawaiian	*	*	95	95
Hispanic	*	*	95	95
White	100	100	95	95
Multi-Racial	*	*	95	95
English Language Learner	*	*	95	95
Special Education	*	100	95	95
Low Income	100	100	95	95



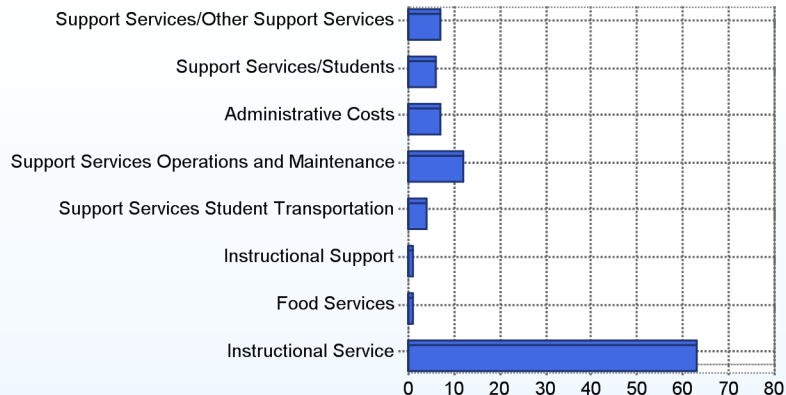
### School Finances

District Expenditure per Pupil (2010-2011): \$13,250

District Sources of Revenue (2010-2011)



Percent District Allocation of Current Expenses by Category (2010-2011)



### School Salary Allocation

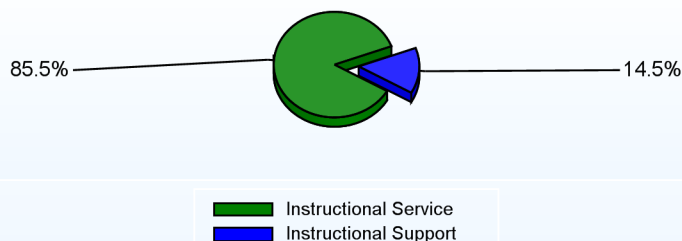
Instructional Service

	2012
Teachers	72.5%
Librarians	2.4%
Instructional Support	4.9%
Pupil Support	5.7%
Total	85.5%

Instructional Support

	2012
Administration	6.9%
Secretaries	1.6%
Food Services	1.3%
Maintenance	4.7%
Total	14.5%

Instructional vs. Support (2011-2012)



For further information and detailed reports, visit

<http://profiles.doe.k12.de.us>

or contact your local school district office.

Glossary: <http://profiles.doe.k12.de.us/glossary.aspx>



#### Delaware Department of Education

John G. Townsend Building  
401 Federal Street, Suite #2  
Dover, Delaware, 19901 - 3639  
Phone: (302) 735-4000



**District:** Brandywine School District  
**Address:** 100 Maple Lane, Claymont DE 19703  
**Principal:** Yulonda Murray  
**AYP:** Met

**Telephone:** (302) 792-3906  
**Web:** [www.brandywineschools.org/maple/site/](http://www.brandywineschools.org/maple/site/)

## School Demographics

Fall Enrollment		
	2011	2012
Kindergarten	75	76
Grade 1	78	74
Grade 2	73	84
Grade 3	65	71
Grade 4	63	73
Grade 5	61	65
Total	415	443

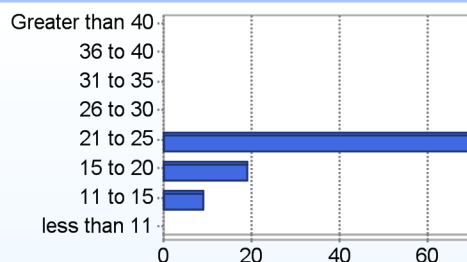
Recently Arrived ELL Students	
	2012
Number of Students Not Tested on ELA Assessment	2

Enrollment by Race/Ethnicity		
	2011	2012
African American	36.4%	34.8%
Asian	3.9%	3.2%
Hispanic/Latino	12.8%	14.0%
White	47.0%	48.1%

School Promotion by Grade	
	2011
Kindergarten	98.7%
Grade 1	93.6%
Grade 2	100.0%
Grade 3	96.9%
Grade 4	100.0%
Grade 5	100.0%

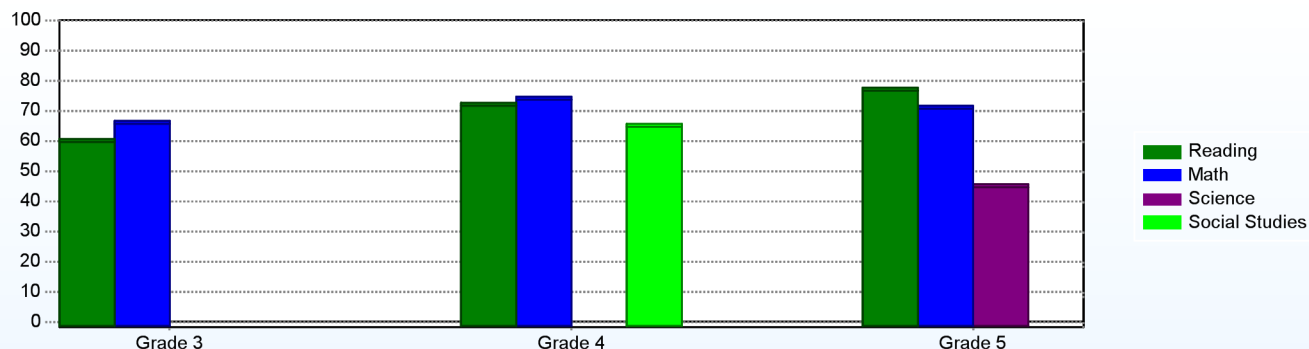
Other Student Characteristics		
	2011	2012
English Language Learner	9.9%	8.8%
Low Income	60.2%	60.5%
Special Education	9.9%	9.0%
Enrolled for Full Year	94.2%	N/A

## Class Size (Percentage by Range) (2011-2012)



## Student Achievement

### Percentage of Students Meeting State Standards (2011-2012)



## Exemplary Programs

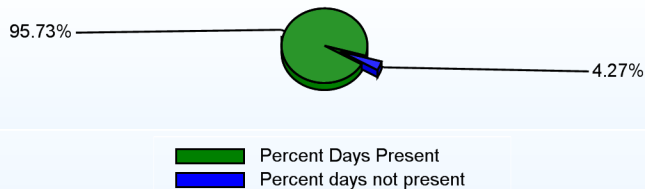
Celebrating the achievements of students and supporting their development are beliefs exhibited daily at Maple Lane. We do "whatever it takes" to help children become successful. Our Balanced Calendar, which shortens the summer break, helps us address summer learning loss. Intersessions are periods of time when part of the traditional summer vacation is redistributed throughout the year. During these "vacation weeks", enrichment and remedial classes are held in our school. Our Instructional Support Team is a collaborative problem-solving process which supports teachers in the classroom and helps focus on instructional matches for children. We are a Positive Behavior Support School. This program teaches children the behaviors that are expected at school. Students who follow rules and make the right choices are praised and rewarded. We maintain a consistent, fair and positive environment. We are a Positive Behavior Support Star School.

## Student - School Safety and Discipline

## Number of Reported Offenses (2011-2012)

	<u>School</u>	<u>District</u>	<u>State</u>
School Crimes (Title 14, Delaware Code, §4112)	3	124	957
Department of Education (DOE) Offenses	133	1544	10291
All School Safety Policy in Place	Yes		

## Percent Days Present (2011-2012)



## Suspensions and Expulsions

	<u>2012</u>
Number of Suspensions	54
Number of Expulsions	0
Count of Students Suspended/Expelled	31
September 30 Enrollment	443
Percent of Students Suspended/Expelled	7%
District Percentage	16%
State Percentage	15%

## Our Staff

## Number of Instructional Staff

	<u>2012</u>
Teachers	28
Librarians	1
Pupil Support	3
Total	32

## Staff by Race/Ethnicity

	<u>2012</u>
American Indian	0.0%
African American	0.0%
Asian American	0.0%
Hispanic	0.0%
White	100.0%

## Staffing Ratios

	<u>2012</u>
Students Per Teacher	16
Students Per Administrator	443
Students Per Instructional Staff	13
Students Per Pupil Support Staff	177
School Staff Per Administrator	42

## Staff Qualifications

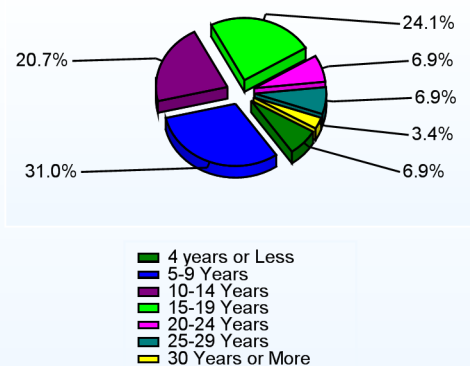
## Percentage of Classes Taught by Highly Qualified Teachers (2011-2012)

	<u>Total Classes</u>	<u>% Highly Qualified</u>	<u>% Not Highly Qualified</u>
Arts	4	100.0%	0.0%
Elementary General	20	100.0%	0.0%

## Education Level

	<u>2012</u>
Percent with Masters Degree and Above	73.7%
Percent Holding National Board for Professional Teaching Standards	9.4%

## Years of Teaching Experience (2011-2012)

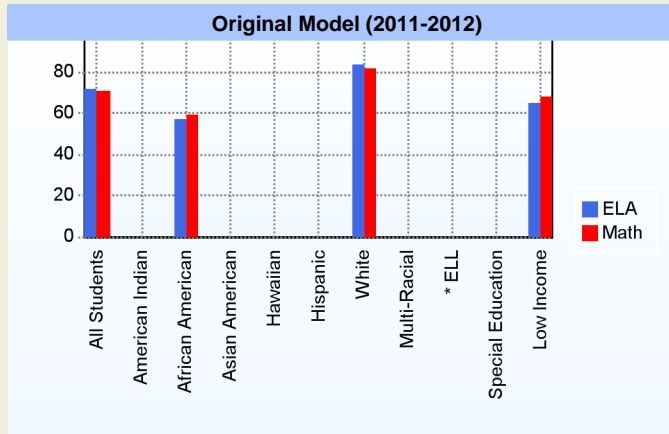


## Curriculum Highlights

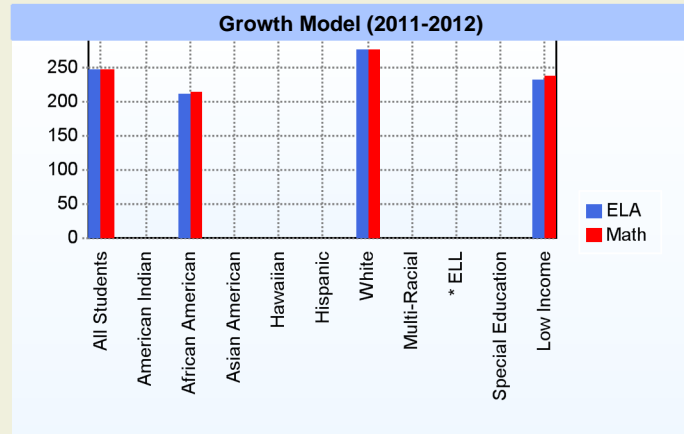
Academic goals begin with State Standards and district pacing guides. Data drives our instruction. Results from assessments help determine instructional goals for students. Our Title I Program provides the services of a reading specialist who offers additional, small group language arts instruction for at-risk students. The Early Reading Intervention Program is a supplemental program giving selected 1st grade students extra support in reading. This program uses Breakthrough to Literacy and Reading Success From the Start and is under the guidance of our reading specialist. Teachers embrace the Meet The Challenge Program which requires children to reflect on their answers and improve if necessary. In an MTC exercise, teachers re-teach students who need to improve their responses. Our message to our students is that we will not give up on them, they will be successful, and we have faith in them. Our school embraces the Special Education Inclusion Model to support all students.

## AYP

Only groups with greater than 40 students are reported



\* English Language Learner



\* English Language Learner

## % Test Participation (2011-2012)

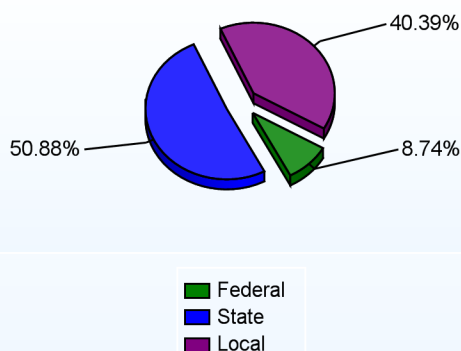
	<u>ELA</u>	<u>Math</u>	<u>ELA Goal</u>	<u>Math Goal</u>
All Students	100	100	95	95
American Indian	*	*	95	95
African American	99	99	95	95
Asian American	*	*	95	95
Hawaiian	*	*	95	95
Hispanic	*	*	95	95
White	100	100	95	95
Multi-Racial	*	*	95	95
English Language Learner	*	*	95	95
Special Education	*	*	95	95
Low Income	99	99	95	95



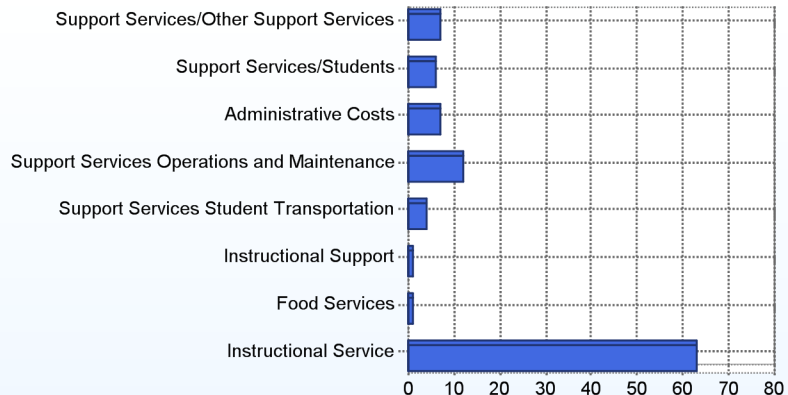
### School Finances

District Expenditure per Pupil (2010-2011): \$13,250

District Sources of Revenue (2010-2011)



Percent District Allocation of Current Expenses by Category (2010-2011)



### School Salary Allocation

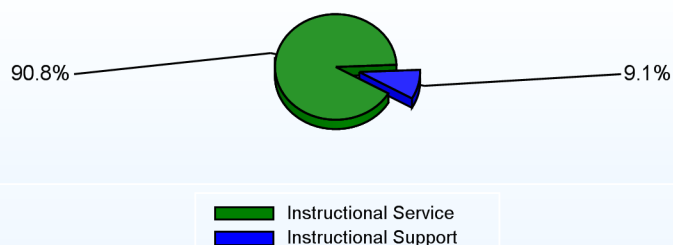
Instructional Service

	2012
Teachers	75.8%
Librarians	1.8%
Instructional Support	5.2%
Pupil Support	8.0%
Total	90.8%

Instructional Support

	2012
Administration	4.1%
Secretaries	1.7%
Food Services	1.5%
Maintenance	1.8%
Total	9.1%

Instructional vs. Support (2011-2012)



For further information and detailed reports, visit

<http://profiles.doe.k12.de.us>

or contact your local school district office.

Glossary: <http://profiles.doe.k12.de.us/glossary.aspx>



#### Delaware Department of Education

John G. Townsend Building  
401 Federal Street, Suite #2  
Dover, Delaware, 19901 - 3639  
Phone: (302) 735-4000

**District:** Brandywine School District  
**Address:** 3401 Green Street, Claymont DE 19703  
**Principal:** James Grant  
**AYP:** Met

**Telephone:** (302) 792-3880  
**Web:** [www.bandywineschools.org/claymont/site/](http://www.bandywineschools.org/claymont/site/)

## School Demographics

Fall Enrollment		
	2011	2012
Kindergarten	103	100
Grade 1	104	109
Grade 2	84	100
Grade 3	89	82
Grade 4	185	172
Grade 5	172	188
Total	737	751

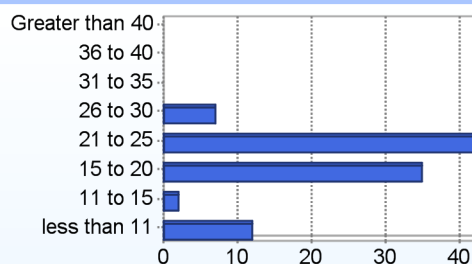
Enrollment by Race/Ethnicity		
	2011	2012
African American	40.3%	36.6%
American Indian	0.5%	0.8%
Asian	9.2%	9.9%
Hawaiian		0.1%
Hispanic/Latino	8.8%	7.9%
White	39.6%	43.7%
Multi-Racial	1.5%	1.1%

Other Student Characteristics		
	2011	2012
English Language Learner	11.8%	10.1%
Low Income	60.0%	57.4%
Special Education	11.4%	10.9%
Enrolled for Full Year	95.0%	N/A

Recently Arrived ELL Students	
	2012
Number of Students Not Tested on ELA Assessment	0

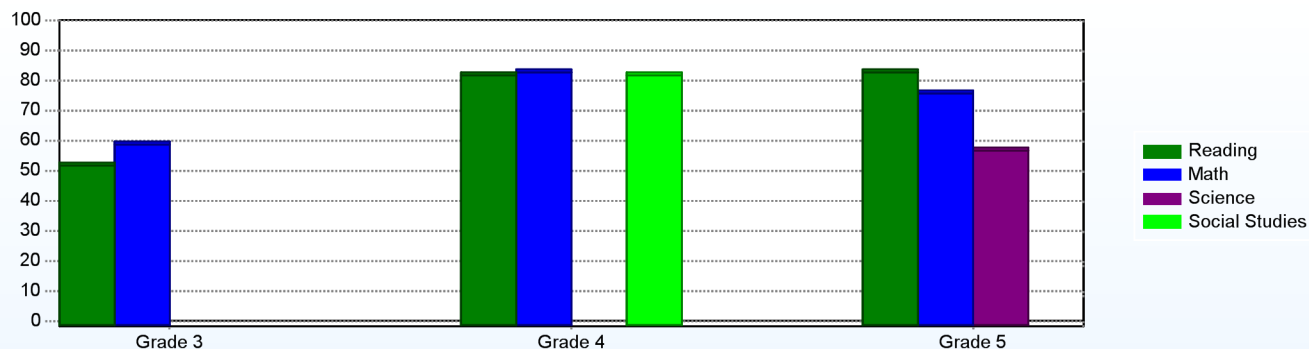
School Promotion by Grade	
	2011
Kindergarten	100.0%
Grade 1	95.2%
Grade 2	97.6%
Grade 3	98.9%
Grade 4	98.9%
Grade 5	100.0%

Class Size (Percentage by Range) (2011-2012)



## Student Achievement

Percentage of Students Meeting State Standards (2011-2012)



## Exemplary Programs

Our mission at Claymont Elementary is to help all students excel. As part of that plan, students receive differentiated instruction in flexible groupings. Inclusion classes help students with special needs and English language acquisition. In addition to the regular day, some students participate in After School Academy, which is held three days a week from October through March. In the summer, a nine day summer school is held to work with specialized populations in an attempt to reduce the achievement gap. Our counseling staff offers highly innovative social skills training programs to help improve student academics, behavior, and social adjustment. Claymont is a Positive Behavior Support Star School and as part of that program, students have an opportunity to participate in many community and charitable outreach programs.

## Student - School Safety and Discipline

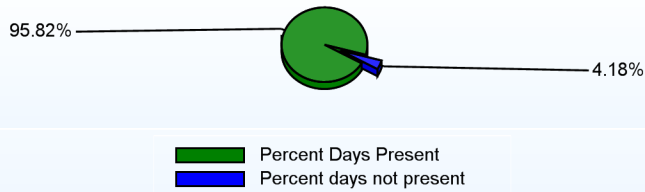
## Number of Reported Offenses (2011-2012)

	<u>School</u>	<u>District</u>	<u>State</u>
School Crimes (Title 14, Delaware Code, §4112)	7	124	957
Department of Education (DOE) Offenses	89	1544	10291
All School Safety Policy in Place	Yes		

## Suspensions and Expulsions

	<u>2012</u>
Number of Suspensions	226
Number of Expulsions	0
Count of Students Suspended/Expelled	83
September 30 Enrollment	751
Percent of Students Suspended/Expelled	11%
District Percentage	16%
State Percentage	15%

## Percent Days Present (2011-2012)



## Our Staff

## Number of Instructional Staff

	<u>2012</u>
Teachers	51
Librarians	1
Pupil Support	7
Total	60

## Staff by Race/Ethnicity

	<u>2012</u>
American Indian	0.0%
African American	12.9%
Asian American	0.0%
Hispanic	0.0%
White	87.1%

## Staffing Ratios

	<u>2012</u>
Students Per Teacher	15
Students Per Administrator	376
Students Per Instructional Staff	12
Students Per Pupil Support Staff	104
School Staff Per Administrator	45

## Staff Qualifications

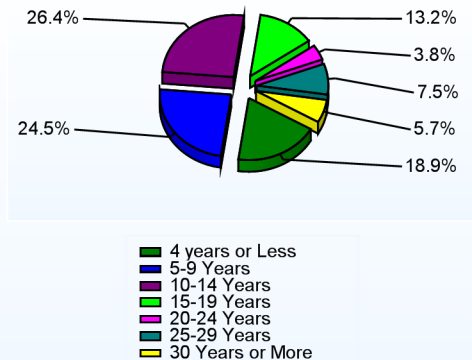
## Percentage of Classes Taught by Highly Qualified Teachers (2011-2012)

	<u>Total Classes</u>	<u>% Highly Qualified</u>	<u>% Not Highly Qualified</u>
Arts	10	100.0%	0.0%
Elementary General	39	97.4%	2.6%

## Education Level

	<u>2012</u>
Percent with Masters Degree and Above	49.3%
Percent Holding National Board for Professional Teaching Standards	6.8%

## Years of Teaching Experience (2011-2012)



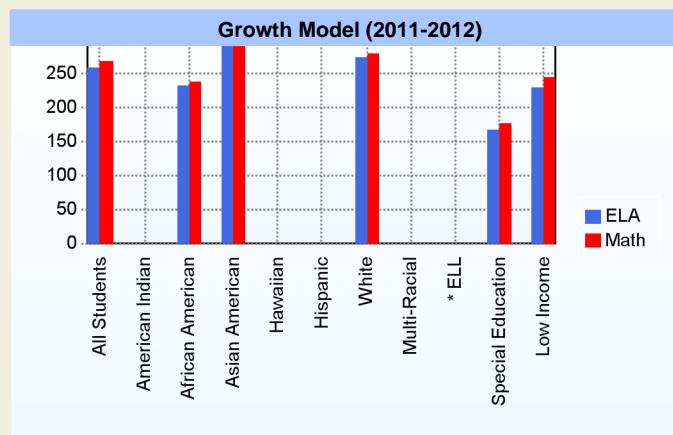
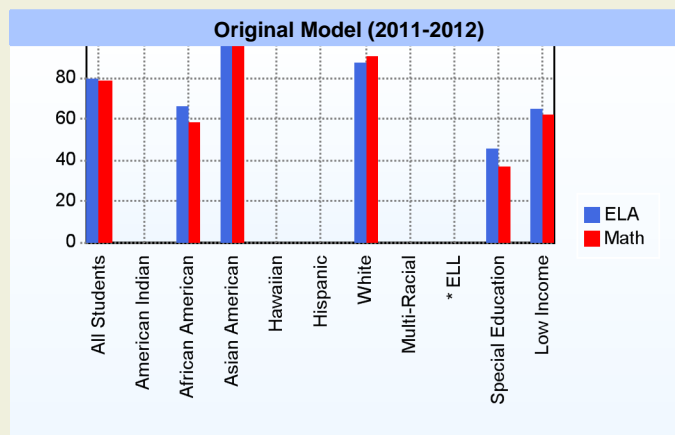
## Curriculum Highlights

Claymont Elementary has several programs designed to raise achievement for all of our students:

- \* Use of Multiple Intelligence and interest surveys to tailor instruction
- \* Multiple assessment information is used to design and implement instruction around student need
- \* NCS Lab for additional support in math and reading
- \* Math and Reading Specialists "push in" to classrooms to support instruction
- \* Use of the Rosetta Stone program to meet the needs of ELL learners

## AYP

Only groups with greater than 40 students are reported



\* English Language Learner

\* English Language Learner

## % Test Participation (2011-2012)

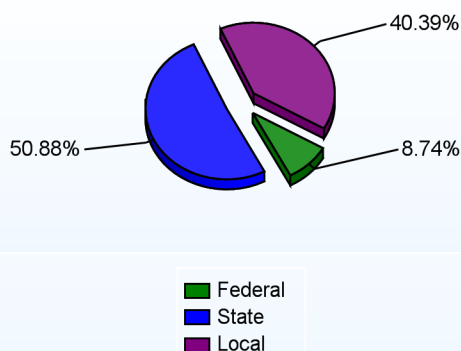
	<u>ELA</u>	<u>Math</u>	<u>ELA Goal</u>	<u>Math Goal</u>
All Students	100	100	95	95
American Indian	*	*	95	95
African American	100	100	95	95
Asian American	100	100	95	95
Hawaiian	*	*	95	95
Hispanic	*	*	95	95
White	100	100	95	95
Multi-Racial	*	*	95	95
English Language Learner	*	*	95	95
Special Education	100	100	95	95
Low Income	100	100	95	95



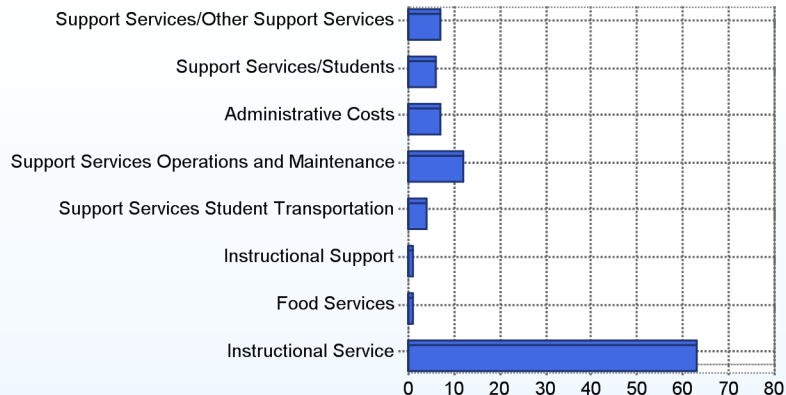
### School Finances

District Expenditure per Pupil (2010-2011): \$13,250

District Sources of Revenue (2010-2011)



Percent District Allocation of Current Expenses by Category (2010-2011)



### School Salary Allocation

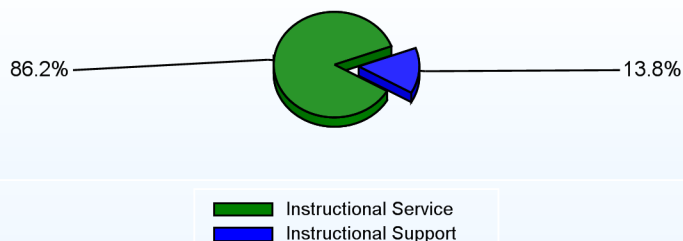
Instructional Service

	2012
Teachers	68.6%
Librarians	1.6%
Instructional Support	5.5%
Pupil Support	10.5%
Total	86.2%

Instructional Support

	2012
Administration	4.5%
Secretaries	1.6%
Food Services	2.6%
Maintenance	5.1%
Total	13.8%

Instructional vs. Support (2011-2012)



For further information and detailed reports, visit

<http://profiles.doe.k12.de.us>

or contact your local school district office.

Glossary: <http://profiles.doe.k12.de.us/glossary.aspx>



#### Delaware Department of Education

John G. Townsend Building  
401 Federal Street, Suite #2  
Dover, Delaware, 19901 - 3639  
Phone: (302) 735-4000



**District:** Brandywine School District  
**Address:** 3601 Jefferson Street , Wilmington DE 19802  
**Principal:** Marqueia Davis  
**AYP:** Met

**Telephone:** (302) 762-7156  
**Web:** [www.bandywineschools.org/harlan/site/](http://www.bandywineschools.org/harlan/site/)

## School Demographics

Fall Enrollment		
	2011	2012
Kindergarten	76	50
Grade 1	73	74
Grade 2	50	66
Grade 3	39	55
Grade 4	78	44
Grade 5	67	74
Total	383	363

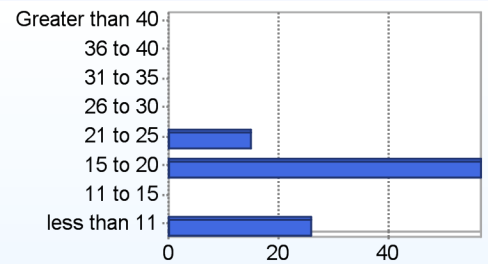
Enrollment by Race/Ethnicity		
	2011	2012
African American	81.7%	84.8%
American Indian	0.3%	0.6%
Asian	1.0%	1.1%
Hawaiian		0.3%
Hispanic/Latino	5.7%	5.8%
White	10.4%	6.9%
Multi-Racial	0.8%	0.6%

Other Student Characteristics		
	2011	2012
English Language Learner	2.9%	2.5%
Low Income	73.1%	77.1%
Special Education	16.7%	16.8%
Enrolled for Full Year	95.8%	N/A

Recently Arrived ELL Students	
	2012
Number of Students Not Tested on ELA Assessment	0

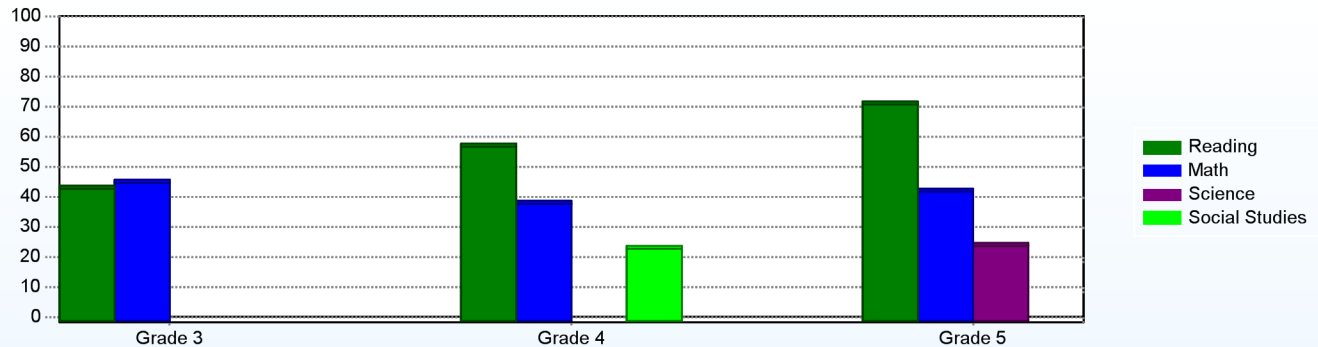
School Promotion by Grade	
	2011
Kindergarten	97.4%
Grade 1	97.3%
Grade 2	98.0%
Grade 3	100.0%
Grade 4	100.0%
Grade 5	100.0%

Class Size (Percentage by Range) (2011-2012)



## Student Achievement

Percentage of Students Meeting State Standards (2011-2012)



## Exemplary Programs

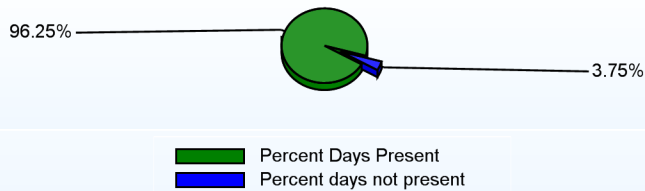
The Harlan staff is committed to developing and promoting balanced achievement through research based educational best practices. Our goal is to connect learning to the real world as we prepare our students to become global citizens. In our efforts to become an exemplary school we utilize a Learning Focus Solution framework to address the diverse learning needs of our students. We are presently seeking accreditation as an International Baccalaureate World School. We offer heterogeneously grouped classes in grades K-5. We are a community minded school that understands the importance of strong relationships as we work with students and families. Students have the opportunity to participate in a foreign language (Spanish) as part of the International Baccalaureate Program. We also offer Odyssey of the Mind, Community Service Club, and Girls on the Run, band, chorus and many other enrichment programs to help foster student achievement.

## Student - School Safety and Discipline

## Number of Reported Offenses (2011-2012)

	<u>School</u>	<u>District</u>	<u>State</u>
School Crimes (Title 14, Delaware Code, §4112)	2	124	957
Department of Education (DOE) Offenses	154	1544	10291
All School Safety Policy in Place	Yes		

## Percent Days Present (2011-2012)



## Suspensions and Expulsions

	<u>2012</u>
Number of Suspensions	147
Number of Expulsions	0
Count of Students Suspended/Expelled	65
September 30 Enrollment	363
Percent of Students Suspended/Expelled	18%
District Percentage	16%
State Percentage	15%

## Our Staff

## Number of Instructional Staff

	<u>2012</u>
Teachers	36
Librarians	1
Pupil Support	5
Total	42

## Staff by Race/Ethnicity

	<u>2012</u>
American Indian	0.0%
African American	23.8%
Asian American	0.0%
Hispanic	2.4%
White	73.8%

## Staffing Ratios

	<u>2012</u>
Students Per Teacher	10
Students Per Administrator	182
Students Per Instructional Staff	8
Students Per Pupil Support Staff	73
School Staff Per Administrator	32

## Staff Qualifications

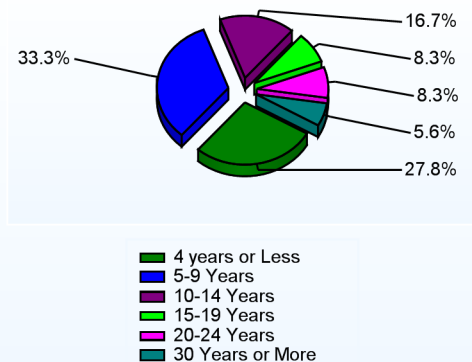
## Percentage of Classes Taught by Highly Qualified Teachers (2011-2012)

	<u>Total Classes</u>	<u>% Highly Qualified</u>	<u>% Not Highly Qualified</u>
Arts	2	100.0%	0.0%
Foreign Languages	1	100.0%	0.0%
Elementary General	23	100.0%	0.0%

## Education Level

	<u>2012</u>
Percent with Masters Degree and Above	57.7%
Percent Holding National Board for Professional Teaching Standards	0.0%

## Years of Teaching Experience (2011-2012)



## Curriculum Highlights

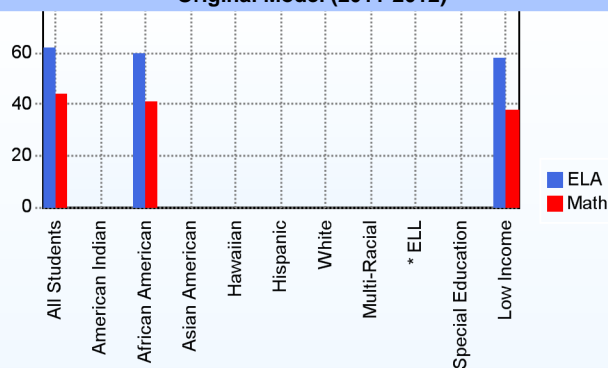
## International Baccalaureate Candidate School

The Primary Years Programme (PYP) focuses on the whole child as we address social, physical, emotional, cultural and most important academic needs of every child. The traditional academic subjects are valued. Grades 3-5 participate in Singapore math while grades K-2 utilize the TERC investigative math curriculum. Science is taught utilizing the Smithsonian Science kits. We teach utilizing a 90 minute reading block via Paratore model of instruction. We incorporate lots of small group instruction to ensure that individual learning needs are met as we work to challenge all ability levels. The PYP enables children to develop understanding of multiple perspectives through the curriculum, attributes and the expectation of socially responsible action as a result of the learning experiences. For more information go to [www.ibo.org](http://www.ibo.org).

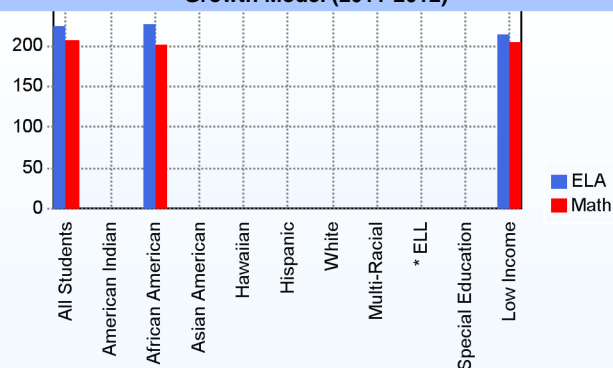
## AYP

Only groups with greater than 40 students are reported

Original Model (2011-2012)



Growth Model (2011-2012)



\* English Language Learner

\* English Language Learner

% Test Participation (2011-2012)

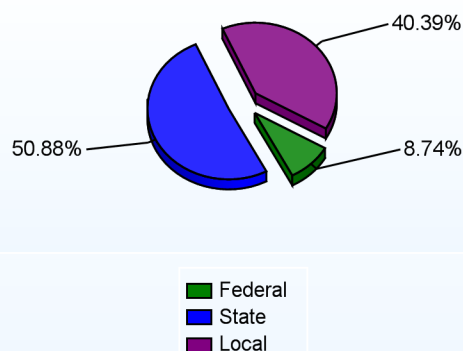
	<u>ELA</u>	<u>Math</u>	<u>ELA Goal</u>	<u>Math Goal</u>
All Students	100	100	95	95
American Indian	*	*	95	95
African American	100	100	95	95
Asian American	*	*	95	95
Hawaiian	*	*	95	95
Hispanic	*	*	95	95
White	*	*	95	95
Multi-Racial	*	*	95	95
English Language Learner	*	*	95	95
Special Education	*	*	95	95
Low Income	100	100	95	95



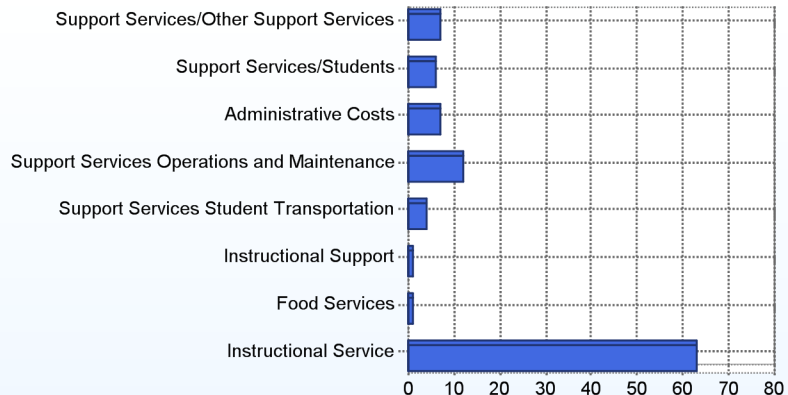
### School Finances

District Expenditure per Pupil (2010-2011): \$13,250

District Sources of Revenue (2010-2011)



Percent District Allocation of Current Expenses by Category (2010-2011)



### School Salary Allocation

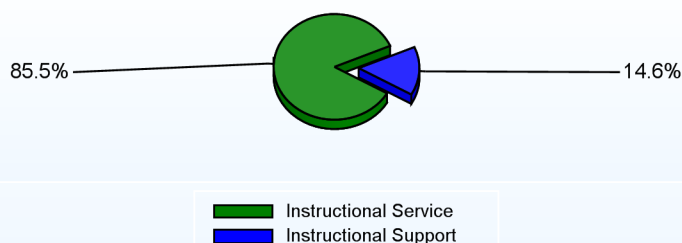
Instructional Service

	2012
Teachers	65.1%
Librarians	2.5%
Instructional Support	6.9%
Pupil Support	11.0%
Total	85.5%

Instructional Support

	2012
Administration	6.1%
Secretaries	1.5%
Food Services	2.8%
Maintenance	4.2%
Total	14.6%

Instructional vs. Support (2011-2012)



For further information and detailed reports, visit

<http://profiles.doe.k12.de.us>

or contact your local school district office.

Glossary: <http://profiles.doe.k12.de.us/glossary.aspx>



#### Delaware Department of Education

John G. Townsend Building  
401 Federal Street, Suite #2  
Dover, Delaware, 19901 - 3639  
Phone: (302) 735-4000

**District:** Brandywine School District  
**Address:** 701 West 34th Street, Wilmington DE 19802  
**Principal:** Lewis Cheatwood  
**AYP:** Not Met

**Telephone:** (302) 762-7146  
**Web:** [www.brandywineschools.org/psdupont/](http://www.brandywineschools.org/psdupont/)

### School Demographics

Fall Enrollment		
	2011	2012
Pre-Kindergarten	2	4
Grade 6	319	300
Grade 7	313	321
Grade 8	245	325
Total	879	950

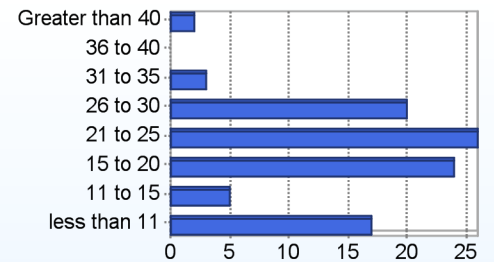
Enrollment by Race/Ethnicity		
	2011	2012
African American	53.8%	52.4%
American Indian	0.3%	0.1%
Asian	3.5%	4.9%
Hispanic/Latino	4.8%	4.2%
White	37.5%	37.4%
Multi-Racial		0.9%

Other Student Characteristics		
	2011	2012
English Language Learner	2.2%	1.7%
Low Income	51.0%	50.8%
Special Education	16.6%	14.7%
Enrolled for Full Year	94.9%	N/A

Recently Arrived ELL Students	
	2012
Number of Students Not Tested on ELA Assessment	1

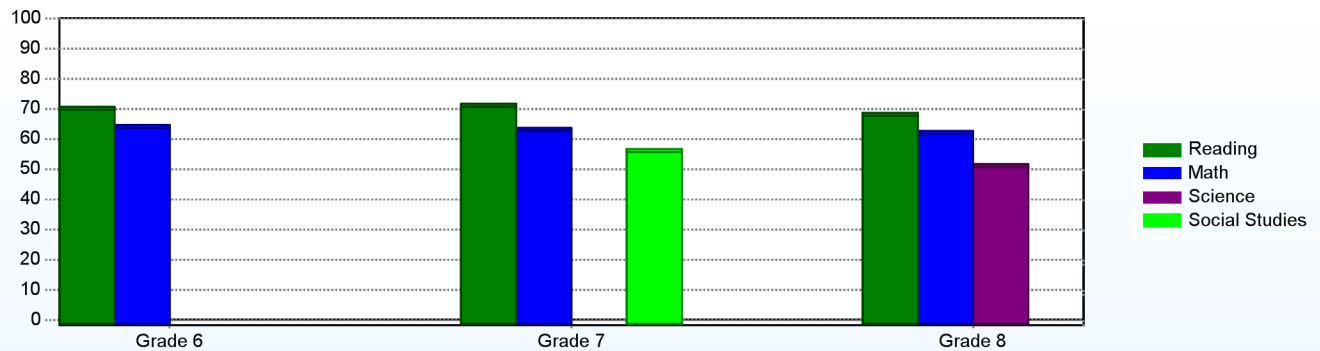
School Promotion by Grade	
	2011
Grade 6	98.1%
Grade 7	98.1%
Grade 8	98.8%

Class Size (Percentage by Range) (2011-2012)



### Student Achievement

Percentage of Students Meeting State Standards (2011-2012)

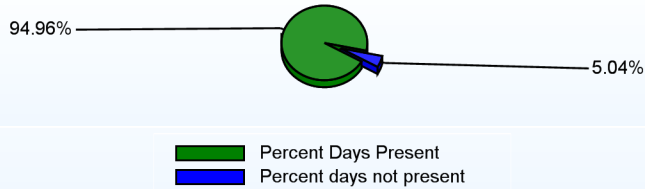


## Student - School Safety and Discipline

## Number of Reported Offenses (2011-2012)

	<u>School</u>	<u>District</u>	<u>State</u>
School Crimes (Title 14, Delaware Code, §4112)	22	124	957
Department of Education (DOE) Offenses	163	1544	10291
All School Safety Policy in Place	Yes		

## Percent Days Present (2011-2012)



## Suspensions and Expulsions

	<u>2012</u>
Number of Suspensions	861
Number of Expulsions	0
Count of Students Suspended/Expelled	247
September 30 Enrollment	950
Percent of Students Suspended/Expelled	26%
District Percentage	16%
State Percentage	15%

## Our Staff

## Number of Instructional Staff

	<u>2012</u>
Teachers	73
Librarians	1
Pupil Support	9
Total	83

## Staff by Race/Ethnicity

	<u>2012</u>
American Indian	1.2%
African American	13.3%
Asian American	2.4%
Hispanic	1.2%
White	81.9%

## Staffing Ratios

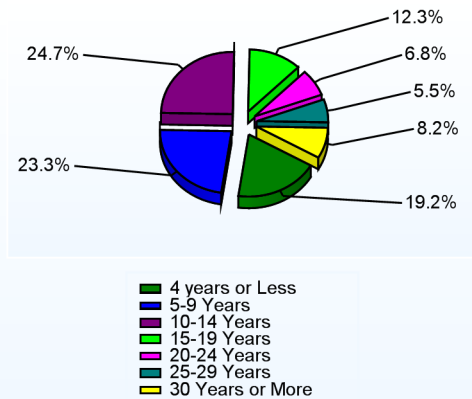
	<u>2012</u>
Students Per Teacher	13
Students Per Administrator	317
Students Per Instructional Staff	11
Students Per Pupil Support Staff	106
School Staff Per Administrator	39

## Staff Qualifications

## Percentage of Classes Taught by Highly Qualified Teachers (2011-2012)

	<u>Total Classes</u>	<u>% Highly Qualified</u>	<u>% Not Highly Qualified</u>
Reading/ Language Arts	39	100.0%	0.0%
Arts	40	100.0%	0.0%
Foreign Languages	7	100.0%	0.0%
Science	35	100.0%	0.0%
Mathematics	48	100.0%	0.0%
Geography	9	55.6%	44.4%
Social Studies	18	88.9%	11.1%
History	9	100.0%	0.0%
Elementary General	14	100.0%	0.0%

## Years of Teaching Experience (2011-2012)

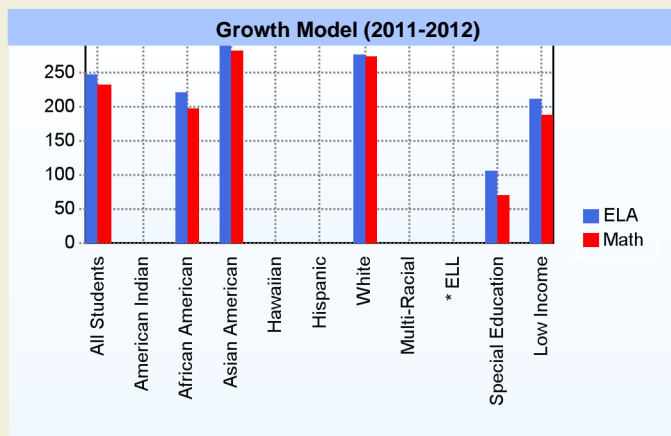
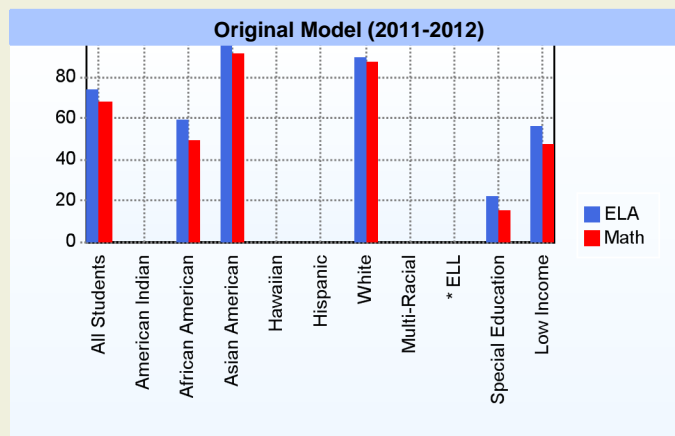


## Education Level

	<u>2012</u>
Percent with Masters Degree and Above	60.6%
Percent Holding National Board for Professional Teaching Standards	1.3%

## AYP

Only groups with greater than 40 students are reported



\* English Language Learner

\* English Language Learner

## % Test Participation (2011-2012)

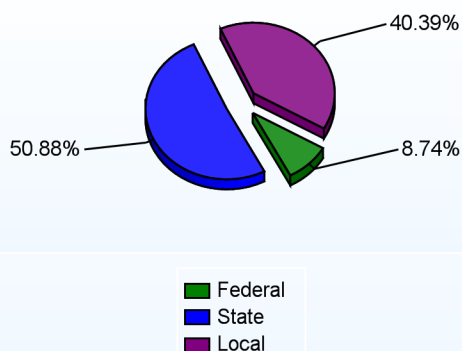
	<u>ELA</u>	<u>Math</u>	<u>ELA Goal</u>	<u>Math Goal</u>
All Students	100	100	95	95
American Indian	*	*	95	95
African American	100	100	95	95
Asian American	100	100	95	95
Hawaiian	*	*	95	95
Hispanic	*	*	95	95
White	100	100	95	95
Multi-Racial	*	*	95	95
English Language Learner	*	*	95	95
Special Education	100	100	95	95
Low Income	100	100	95	95



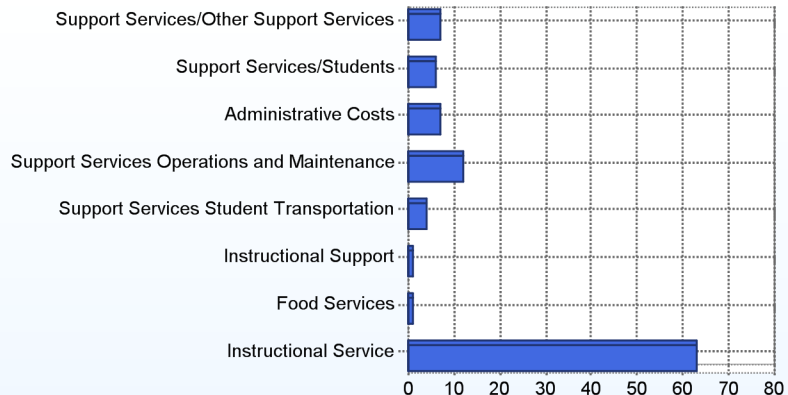
### School Finances

District Expenditure per Pupil (2010-2011): \$13,250

District Sources of Revenue (2010-2011)



Percent District Allocation of Current Expenses by Category (2010-2011)



### School Salary Allocation

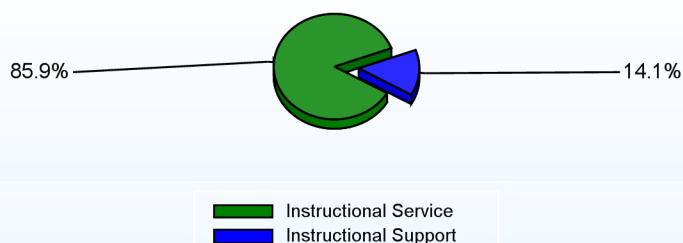
Instructional Service

	2012
Teachers	71.4%
Librarians	1.1%
Instructional Support	4.3%
Pupil Support	9.1%
Total	85.9%

Instructional Support

	2012
Administration	4.7%
Secretaries	2.1%
Food Services	2.0%
Maintenance	5.3%
Total	14.1%

Instructional vs. Support (2011-2012)



For further information and detailed reports, visit

<http://profiles.doe.k12.de.us>

or contact your local school district office.

Glossary: <http://profiles.doe.k12.de.us/glossary.aspx>



#### Delaware Department of Education

John G. Townsend Building  
401 Federal Street, Suite #2  
Dover, Delaware, 19901 - 3639  
Phone: (302) 735-4000



**District:** Brandywine School District  
**Address:** 500 Duncan Road, Wilmington DE 19809  
**Principal:** Joyce Skrobot  
**AYP:** Met

**Telephone:** (302) 762-7120  
**Web:** [www.bandywineschools.org/mpe/site/](http://www.bandywineschools.org/mpe/site/)

## School Demographics

Fall Enrollment		
	2011	2012
Kindergarten	132	131
Grade 1	164	146
Grade 2	186	171
Grade 3	172	187
Grade 4	81	89
Grade 5	78	81
Total	813	805

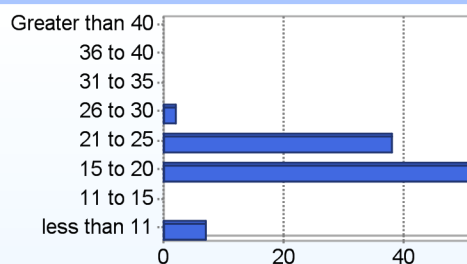
Enrollment by Race/Ethnicity		
	2011	2012
African American	39.2%	39.0%
American Indian	0.1%	0.2%
Asian	4.8%	5.5%
Hawaiian	0.1%	
Hispanic/Latino	4.7%	4.7%
White	47.1%	46.6%
Multi-Racial	3.9%	4.0%

Other Student Characteristics		
	2011	2012
English Language Learner	3.9%	4.5%
Low Income	45.5%	44.8%
Special Education	9.8%	8.9%
Enrolled for Full Year	92.3%	N/A

Recently Arrived ELL Students	
	2012
Number of Students Not Tested on ELA Assessment	0

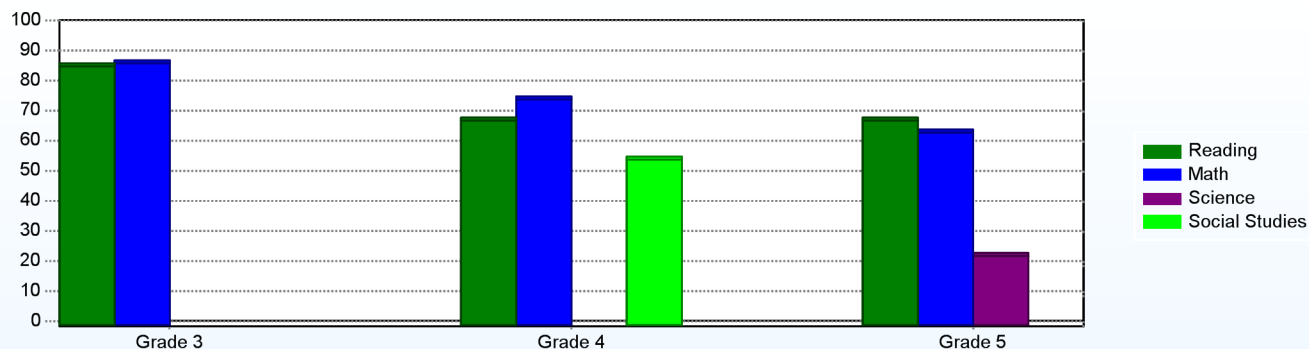
School Promotion by Grade	
	2011
Kindergarten	98.5%
Grade 1	98.2%
Grade 2	98.4%
Grade 3	100.0%
Grade 4	100.0%
Grade 5	98.7%

Class Size (Percentage by Range) (2011-2012)



## Student Achievement

Percentage of Students Meeting State Standards (2011-2012)



## Exemplary Programs

At Mount Pleasant Elementary School, the Responsive Classroom approach to teaching and learning helps create learning environments where children thrive academically, socially, and emotionally. Practical strategies are utilized to bring together social and academic learning throughout the school day, and focus is on classroom management, which increases instructional time while building a caring, social community for learning. The Responsive Classroom approach includes daily Morning Meetings, Guided Discovery, Rules with Logical Consequences, Classroom Organization, Academic Choice, and Assessment and Reporting to Parents.

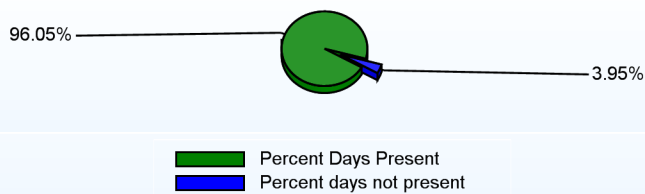
The following exemplary programs have been developed to meet the needs of the diverse student population in the school:  
PM Academy, Enrichment Clusters, Creative Mentoring, Title I Reading Support.

## Student - School Safety and Discipline

## Number of Reported Offenses (2011-2012)

	<u>School</u>	<u>District</u>	<u>State</u>
School Crimes (Title 14, Delaware Code, §4112)	8	124	957
Department of Education (DOE) Offenses	276	1544	10291
All School Safety Policy in Place	Yes		

## Percent Days Present (2011-2012)



## Suspensions and Expulsions

	<u>2012</u>
Number of Suspensions	124
Number of Expulsions	0
Count of Students Suspended/Expelled	56
September 30 Enrollment	805
Percent of Students Suspended/Expelled	7%
District Percentage	16%
State Percentage	15%

## Our Staff

## Number of Instructional Staff

	<u>2012</u>
Teachers	56
Librarians	1
Pupil Support	6
Total	63

## Staff by Race/Ethnicity

	<u>2012</u>
American Indian	0.0%
African American	3.1%
Asian American	0.0%
Hispanic	1.6%
White	95.3%

## Staffing Ratios

	<u>2012</u>
Students Per Teacher	15
Students Per Administrator	268
Students Per Instructional Staff	13
Students Per Pupil Support Staff	134
School Staff Per Administrator	28

## Staff Qualifications

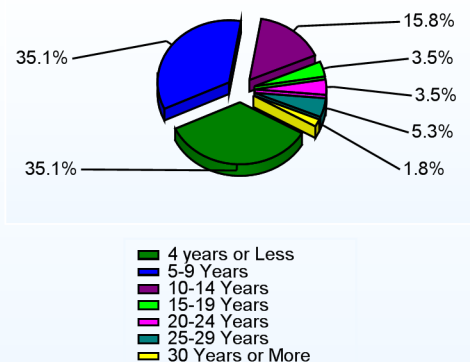
## Percentage of Classes Taught by Highly Qualified Teachers (2011-2012)

	<u>Total Classes</u>	<u>% Highly Qualified</u>	<u>% Not Highly Qualified</u>
Arts	3	100.0%	0.0%
Elementary General	41	100.0%	0.0%

## Education Level

	<u>2012</u>
Percent with Masters Degree and Above	62.0%
Percent Holding National Board for Professional Teaching Standards	8.3%

## Years of Teaching Experience (2011-2012)



## Curriculum Highlights

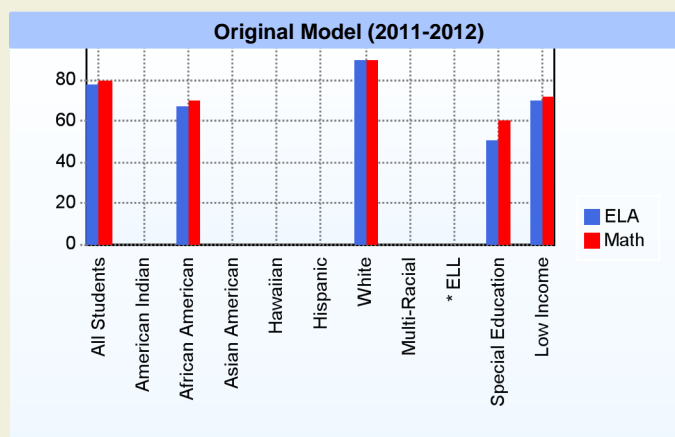
Classroom instruction at Mount Pleasant Elementary is focused on teaching children to become strong readers, writers and to use mathematics effectively, while functioning successfully in a social, school environment. In addition to these core areas of instruction, students receive computer instruction, physical education, music, art and library instruction. Hands-on learning and projects in science and social studies, encourage students to collect, organize, and communicate information to others. The topics of study focus on the Common Core Standards. The Learning Focused Solutions philosophy helps guide instruction.

The following curricular programs are examples of some of the materials used within the school environment:

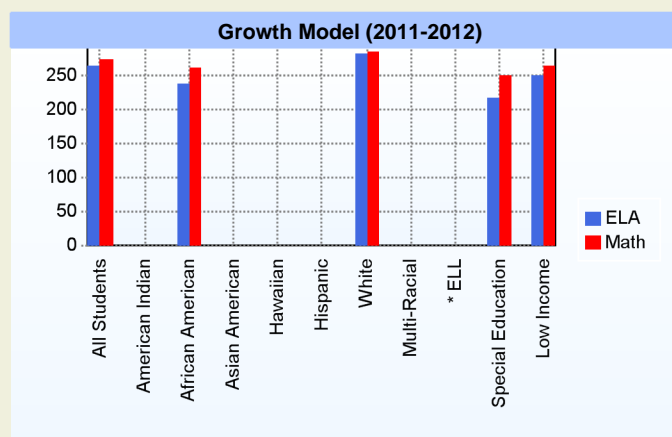
- Kid Writing
- Writer's Workshop
- Breakthrough to Literacy
- Harcourt Reading Series
- Junior Great Books
- Reader's Workshop
- Singapore Math
- Inquiry-Based Science Kits
- Scott Foresman Social Studies Series

## AYP

Only groups with greater than 40 students are reported



\* English Language Learner



\* English Language Learner

## % Test Participation (2011-2012)

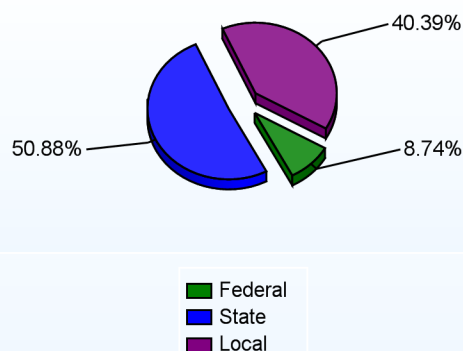
	<u>ELA</u>	<u>Math</u>	<u>ELA Goal</u>	<u>Math Goal</u>
All Students	100	100	95	95
American Indian	*	*	95	95
African American	100	100	95	95
Asian American	*	*	95	95
Hawaiian	*	*	95	95
Hispanic	*	*	95	95
White	100	100	95	95
Multi-Racial	*	*	95	95
English Language Learner	*	*	95	95
Special Education	100	100	95	95
Low Income	100	100	95	95



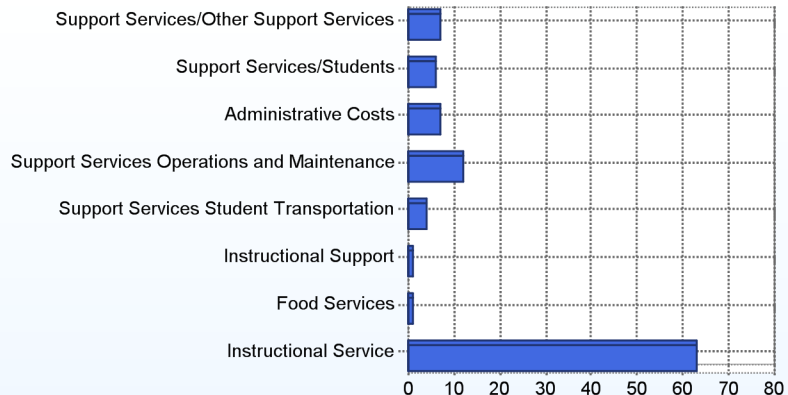
### School Finances

District Expenditure per Pupil (2010-2011): \$13,250

District Sources of Revenue (2010-2011)



Percent District Allocation of Current Expenses by Category (2010-2011)



### School Salary Allocation

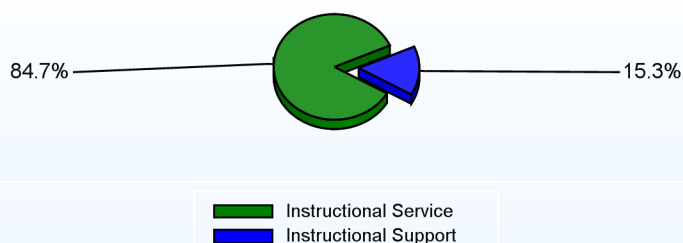
Instructional Service

	2012
Teachers	69.7%
Librarians	1.1%
Instructional Support	3.8%
Pupil Support	10.1%
Total	84.7%

Instructional Support

	2012
Administration	6.8%
Secretaries	1.8%
Food Services	1.2%
Maintenance	5.5%
Total	15.3%

Instructional vs. Support (2011-2012)



For further information and detailed reports, visit

<http://profiles.doe.k12.de.us>

or contact your local school district office.

Glossary: <http://profiles.doe.k12.de.us/glossary.aspx>



#### Delaware Department of Education

John G. Townsend Building  
401 Federal Street, Suite #2  
Dover, Delaware, 19901 - 3639  
Phone: (302) 735-4000

**District:** Brandywine School District  
**Address:** 2220 Shipley Road, Wilmington DE 19803  
**Principal:** Jacquelyn Biggs  
**AYP:** Met

**Telephone:** (302) 479-1621  
**Web:** [www.brandywineschools.org/springer/site/](http://www.brandywineschools.org/springer/site/)

## School Demographics

Fall Enrollment		
	2011	2012
Grade 6	258	269
Grade 7	294	263
Grade 8	322	286
Total	874	818

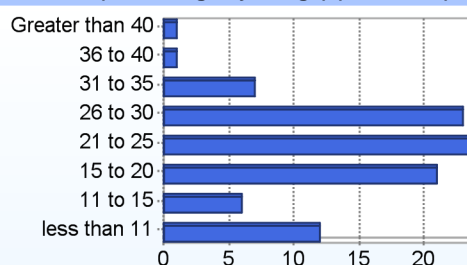
Recently Arrived ELL Students	
	2012
Number of Students Not Tested on ELA Assessment	3

Enrollment by Race/Ethnicity		
	2011	2012
African American	28.9%	28.6%
American Indian	0.2%	0.2%
Asian	3.5%	3.8%
Hispanic/Latino	2.6%	2.7%
White	63.0%	63.3%
Multi-Racial	1.6%	1.3%

School Promotion by Grade	
	2011
Grade 6	96.9%
Grade 7	97.6%
Grade 8	99.7%

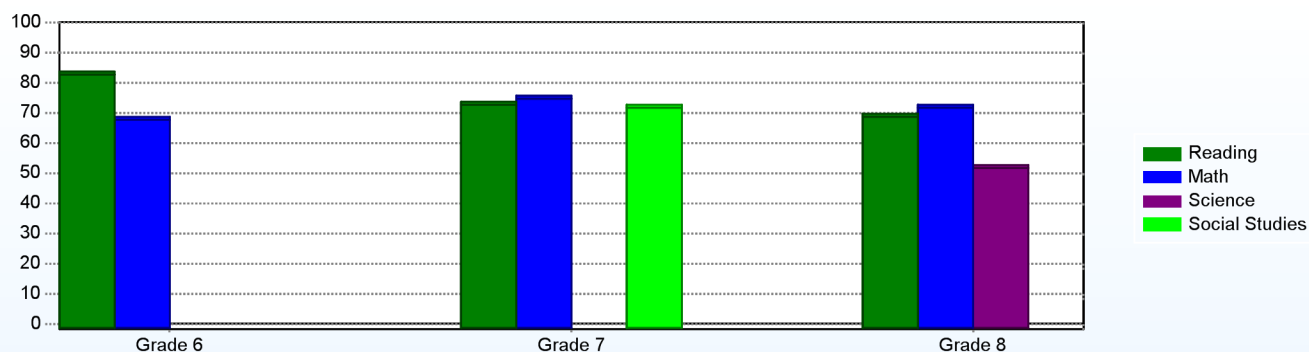
Other Student Characteristics		
	2011	2012
English Language Learner	0.8%	0.9%
Low Income	32.2%	35.5%
Special Education	11.7%	11.1%
Enrolled for Full Year	94.9%	N/A

Class Size (Percentage by Range) (2011-2012)



## Student Achievement

Percentage of Students Meeting State Standards (2011-2012)



## Exemplary Programs

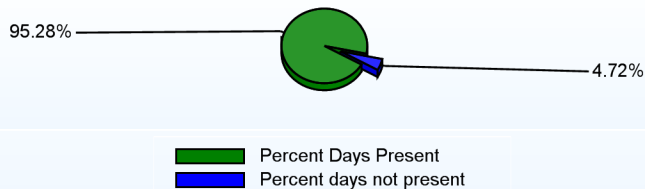
Springer offers a variety of programs that contribute to our students' growth and development. Advancement Via Individual Determination (AVID) provides selected students strategies and tools necessary to be successful in college. The Springer BARK Program is a positive behavior support (PBS) system that recognizes students for following principles that reflect good Springer citizenship. Best Effort, Academic Achievement, Responsible Actions and Kind Gestures (BARK) has contributed to Springer achieving "Star School" status for the past three years. Springer's Technology Student Association, involving pre-engineering and technology education, consistently receives top awards in national competitions. Springer's Healthy Foods for Healthy Kids Program affords students the opportunity to grow, cook and enjoy fresh foods and emphasizes the importance of a healthy diet. Springer's band and chorus have performed extremely well in numerous regional and national competitions.

## Student - School Safety and Discipline

## Number of Reported Offenses (2011-2012)

	<u>School</u>	<u>District</u>	<u>State</u>
School Crimes (Title 14, Delaware Code, §4112)	6	124	957
Department of Education (DOE) Offenses	106	1544	10291
All School Safety Policy in Place	Yes		

## Percent Days Present (2011-2012)



## Suspensions and Expulsions

	<u>2012</u>
Number of Suspensions	645
Number of Expulsions	4
Count of Students Suspended/Expelled	177
September 30 Enrollment	818
Percent of Students Suspended/Expelled	22%
District Percentage	16%
State Percentage	15%

## Our Staff

## Number of Instructional Staff

	<u>2012</u>
Teachers	60
Pupil Support	4
Total	64

## Staff by Race/Ethnicity

	<u>2012</u>
American Indian	0.0%
African American	4.7%
Asian American	0.0%
Hispanic	0.0%
White	95.3%

## Staffing Ratios

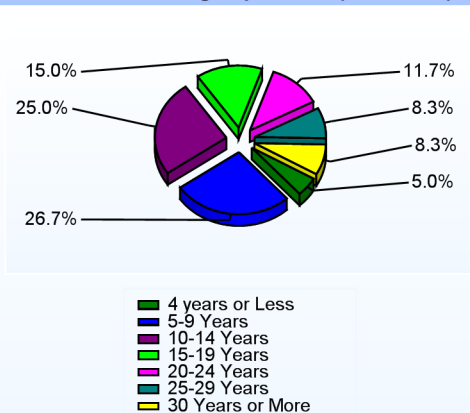
	<u>2012</u>
Students Per Teacher	14
Students Per Administrator	273
Students Per Instructional Staff	13
Students Per Pupil Support Staff	205
School Staff Per Administrator	29

## Staff Qualifications

## Percentage of Classes Taught by Highly Qualified Teachers (2011-2012)

	<u>Total Classes</u>	<u>% Highly Qualified</u>	<u>% Not Highly Qualified</u>
Reading/ Language Arts	44	100.0%	0.0%
Arts	43	100.0%	0.0%
Foreign Languages	6	100.0%	0.0%
Science	34	100.0%	0.0%
Mathematics	40	100.0%	0.0%
Geography	10	100.0%	0.0%
Social Studies	7	100.0%	0.0%
History	12	100.0%	0.0%
Elementary General	15	100.0%	0.0%

## Years of Teaching Experience (2011-2012)



## Education Level

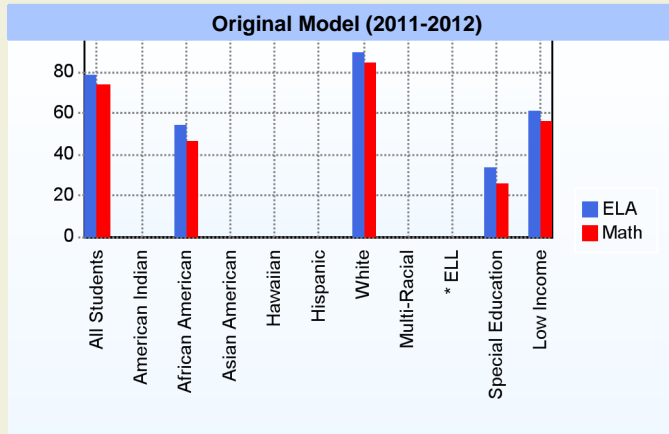
	<u>2012</u>
Percent with Masters Degree and Above	72.1%
Percent Holding National Board for Professional Teaching Standards	6.6%

## Curriculum Highlights

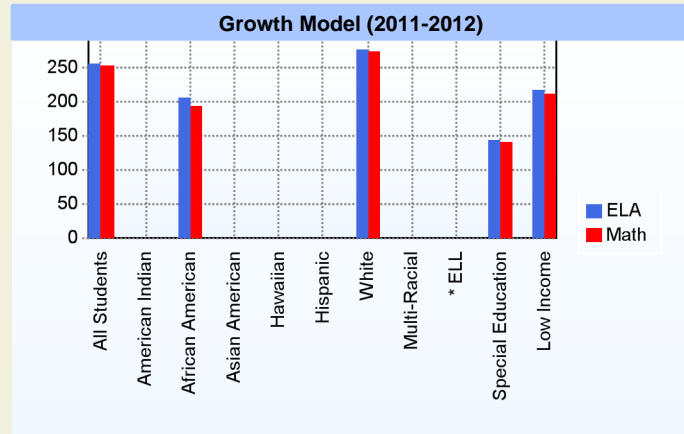
Springer is committed to providing each student an exemplary educational program that fosters critical thinking skills and positive peer interactions. The math program offers courses from high school geometry to academic enrichment opportunities to help students progress to meeting and exceeding the State Standards. The Language Arts program emphasizes analytical thinking skills, reading strategies and writing skills across various contexts. Students participate in sustained silent reading every morning and those requiring more support are provided with a class to help nurture their developing skills. Science at Springer uses an inquiry-based, laboratory approach to explore concepts that include Life Science, Earth Science, Physical Science, Astronomy, and Chemistry. Springer's Social Studies courses focus on History, Civics/Government, Economics and Geography using a variety of methods. Each subject area uses pre-college strategies and tools such as Cornell Notes and Journaling.

## AYP

Only groups with greater than 40 students are reported



\* English Language Learner



\* English Language Learner

## % Test Participation (2011-2012)

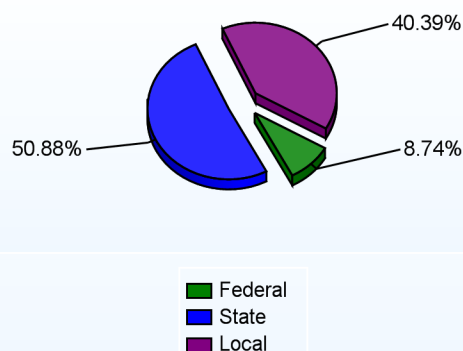
	ELA	Math	ELA Goal	Math Goal
All Students	100	100	95	95
American Indian	*	*	95	95
African American	100	100	95	95
Asian American	*	*	95	95
Hawaiian	*	*	95	95
Hispanic	*	*	95	95
White	100	100	95	95
Multi-Racial	*	*	95	95
English Language Learner	*	*	95	95
Special Education	100	100	95	95
Low Income	100	100	95	95



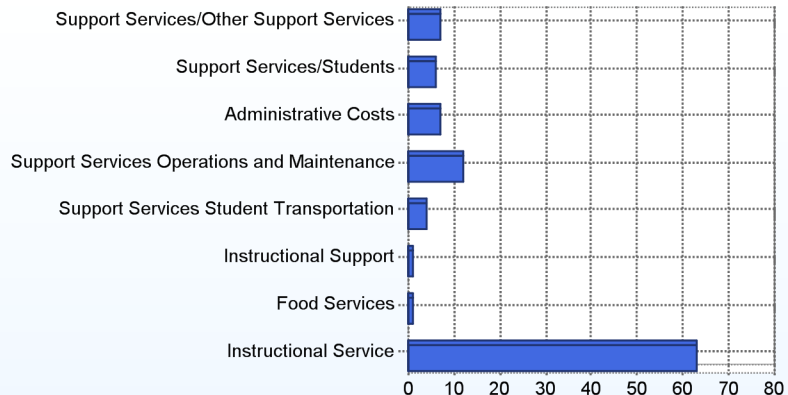
### School Finances

District Expenditure per Pupil (2010-2011): \$13,250

District Sources of Revenue (2010-2011)



Percent District Allocation of Current Expenses by Category (2010-2011)



### School Salary Allocation

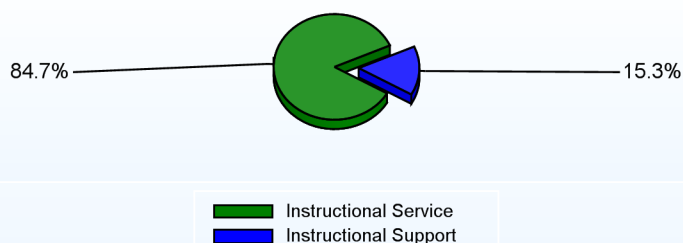
Instructional Service

	2012
Teachers	76.7%
Instructional Support	2.0%
Pupil Support	6.0%
Total	84.7%

Instructional Support

	2012
Administration	5.9%
Secretaries	2.8%
Food Services	2.8%
Maintenance	3.8%
Total	15.3%

Instructional vs. Support (2011-2012)



For further information and detailed reports, visit

<http://profiles.doe.k12.de.us>

or contact your local school district office.

Glossary: <http://profiles.doe.k12.de.us/glossary.aspx>



#### Delaware Department of Education

John G. Townsend Building  
401 Federal Street, Suite #2  
Dover, Delaware, 19901 - 3639  
Phone: (302) 735-4000



**District:** Brandywine School District

**Telephone:** (302) 475-3976

**Address:** 1110 Cypress Road, Wilmington DE 19810

**Web:** [www.brandywineschools.org/talley/site/](http://www.brandywineschools.org/talley/site/)

**Principal:** Richard Carter

**AYP:** Not Met

### School Demographics

Fall Enrollment		
	2011	2012
Grade 6	254	279
Grade 7	225	256
Grade 8	240	216
Total	719	751

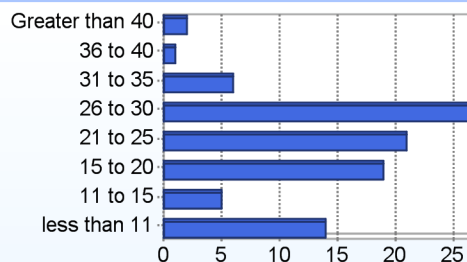
Recently Arrived ELL Students	
	2012
Number of Students Not Tested on ELA Assessment	5

Enrollment by Race/Ethnicity		
	2011	2012
African American	37.6%	37.5%
American Indian		0.1%
Asian	5.7%	5.7%
Hawaiian		0.1%
Hispanic/Latino	6.3%	5.2%
White	50.5%	50.9%
Multi-Racial		0.4%

School Promotion by Grade	
	2011
Grade 6	99.6%
Grade 7	99.6%
Grade 8	99.6%

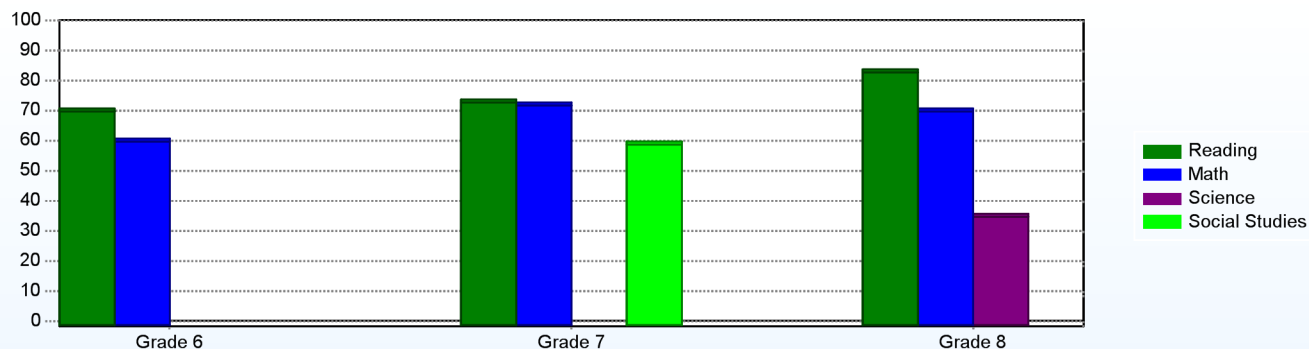
Other Student Characteristics		
	2011	2012
English Language Learner	2.9%	2.0%
Low Income	51.3%	48.5%
Special Education	11.3%	10.3%
Enrolled for Full Year	95.1%	N/A

Class Size (Percentage by Range) (2011-2012)



### Student Achievement

Percentage of Students Meeting State Standards (2011-2012)



## Exemplary Programs

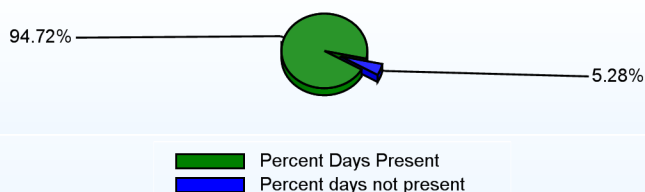
Respect it, Own it, Achieve it, Repeat it (or R.O.A.R.) helped students to understand how their behaviors affect their educational experiences. School-wide meetings are used to share information and formally recognize individual students for outstanding efforts. Our academic programs reflect and reinforce State -Standards. Units and lessons are delivered through differentiated instructional approaches and flexible groupings based upon specific data-identified needs. Cooperative tasks and creative performance assignments, often based on local, national, and global circumstances, offer enhanced opportunities for pupil achievement. A variety of programs and clubs, such as Art Club, Advancement Via Individual Determination (AVID), Business Club, Concert Band, Drama Club, FCCLA Club, Glee Club, International Baccalaureate (IB), Jazz Band, Math League, Science Olympiad, Student Government, Tri-M Honor Society, TSA Club, and Yearbook challenge students to achieve individually, and collectively.

## Student - School Safety and Discipline

## Number of Reported Offenses (2011-2012)

	<u>School</u>	<u>District</u>	<u>State</u>
School Crimes (Title 14, Delaware Code, §4112)	10	124	957
Department of Education (DOE) Offenses	95	1544	10291
All School Safety Policy in Place	Yes		

## Percent Days Present (2011-2012)



## Suspensions and Expulsions

	<u>2012</u>
Number of Suspensions	260
Number of Expulsions	1
Count of Students Suspended/Expelled	129
September 30 Enrollment	751
Percent of Students Suspended/Expelled	17%
District Percentage	16%
State Percentage	15%

## Our Staff

## Number of Instructional Staff

	<u>2012</u>
Teachers	51
Librarians	1
Pupil Support	5
Total	57

## Staff by Race/Ethnicity

	<u>2012</u>
American Indian	0.0%
African American	26.3%
Asian American	0.0%
Hispanic	0.0%
White	73.7%

## Staffing Ratios

	<u>2012</u>
Students Per Teacher	15
Students Per Administrator	250
Students Per Instructional Staff	14
Students Per Pupil Support Staff	150
School Staff Per Administrator	25

## Staff Qualifications

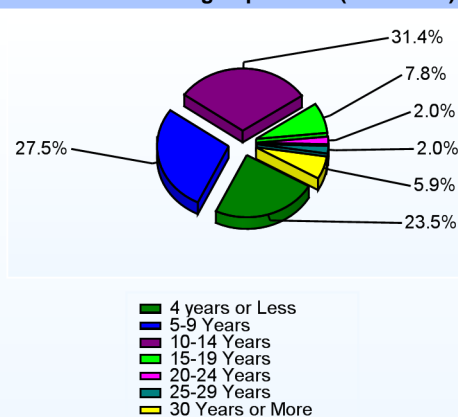
## Percentage of Classes Taught by Highly Qualified Teachers (2011-2012)

	<u>Total Classes</u>	<u>% Highly Qualified</u>	<u>% Not Highly Qualified</u>
Reading/ Language Arts	48	100.0%	0.0%
Arts	40	100.0%	0.0%
Foreign Languages	20	100.0%	0.0%
Science	31	100.0%	0.0%
Mathematics	38	94.7%	5.3%
Geography	5	100.0%	0.0%
Social Studies	6	100.0%	0.0%
History	10	100.0%	0.0%
Elementary General	10	100.0%	0.0%

## Education Level

	<u>2012</u>
Percent with Masters Degree and Above	50.0%
Percent Holding National Board for Professional Teaching Standards	5.8%

## Years of Teaching Experience (2011-2012)

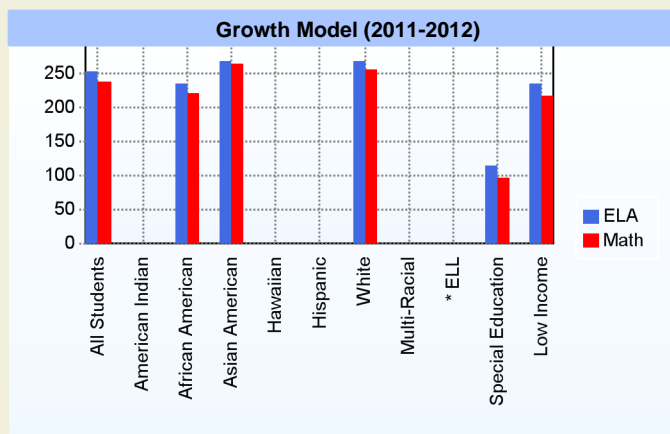
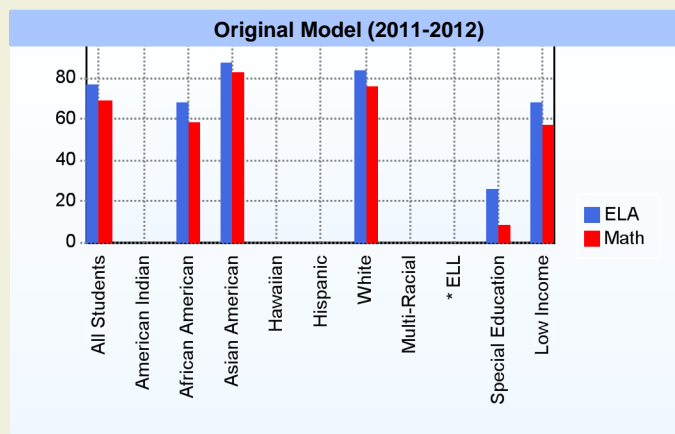


## Curriculum Highlights

We experience consistent improvement on State-wide examination, which resulted from school-wide use of best teaching and learning processes. For example, Talley earned an 84% DCAS proficiency rating among 8th graders in reading during the 2011-2012 school year. Also, inquiry-based learning led Science Olympiad, Math League, and History Day students to success in State-wide competitions.

## AYP

Only groups with greater than 40 students are reported



\* English Language Learner

\* English Language Learner

## % Test Participation (2011-2012)

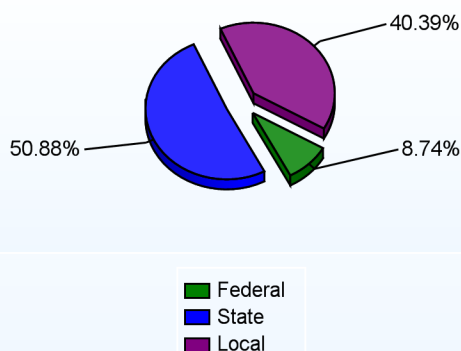
	<u>ELA</u>	<u>Math</u>	<u>ELA Goal</u>	<u>Math Goal</u>
All Students	100	100	95	95
American Indian	*	*	95	95
African American	100	100	95	95
Asian American	100	100	95	95
Hawaiian	*	*	95	95
Hispanic	100	100	95	95
White	100	100	95	95
Multi-Racial	*	*	95	95
English Language Learner	*	*	95	95
Special Education	100	100	95	95
Low Income	100	100	95	95



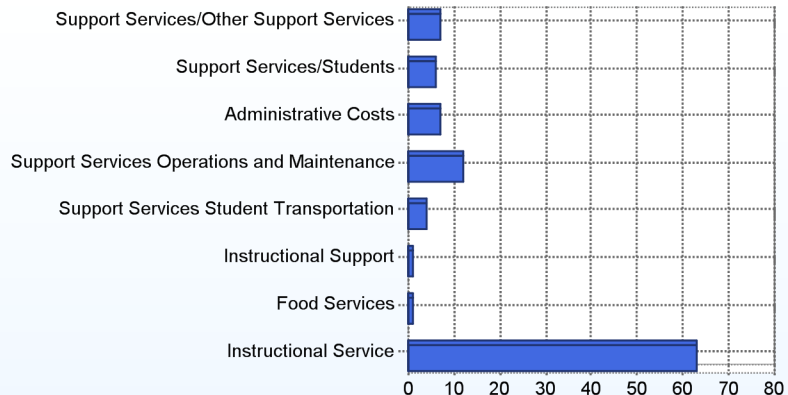
### School Finances

District Expenditure per Pupil (2010-2011): \$13,250

District Sources of Revenue (2010-2011)



Percent District Allocation of Current Expenses by Category (2010-2011)



### School Salary Allocation

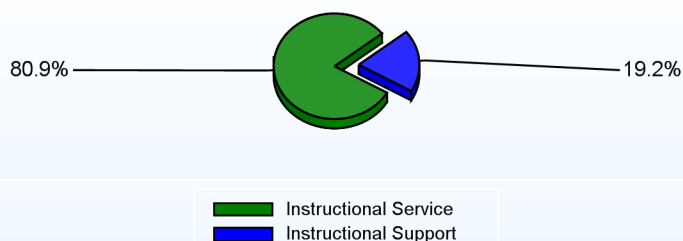
Instructional Service

	2012
Teachers	71.4%
Librarians	1.0%
Instructional Support	0.6%
Pupil Support	7.9%
Total	80.9%

Instructional Support

	2012
Administration	7.2%
Secretaries	3.4%
Food Services	3.1%
Maintenance	5.5%
Total	19.2%

Instructional vs. Support (2011-2012)



For further information and detailed reports, visit

<http://profiles.doe.k12.de.us>

or contact your local school district office.

Glossary: <http://profiles.doe.k12.de.us/glossary.aspx>



#### Delaware Department of Education

John G. Townsend Building  
401 Federal Street, Suite #2  
Dover, Delaware, 19901 - 3639  
Phone: (302) 735-4000

**District:** Brandywine School District  
**Address:** 1400 Foulk Road, Wilmington DE 19803  
**Principal:** Mike Gliniak  
**AYP:** Not Met

**Telephone:** (302) 479-1600  
**Web:** [www.brandywineschools.org/brandywine/site/](http://www.brandywineschools.org/brandywine/site/)

## School Demographics

Fall Enrollment		
	2011	2012
Grade 9	271	295
Grade 10	266	236
Grade 11	260	238
Grade 12	229	230
Total	1026	999

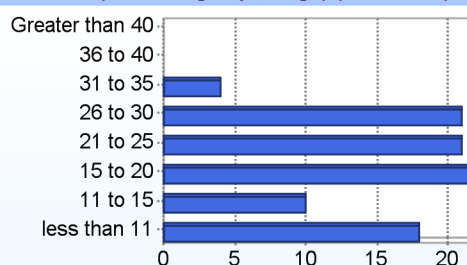
Enrollment by Race/Ethnicity		
	2011	2012
African American	45.0%	43.3%
American Indian	0.2%	0.3%
Asian	3.3%	4.0%
Hispanic/Latino	3.0%	3.3%
White	47.6%	48.0%
Multi-Racial	0.9%	1.0%

Other Student Characteristics		
	2011	2012
English Language Learner	1.8%	2.2%
Low Income	42.9%	43.3%
Special Education	11.0%	11.0%
Enrolled for Full Year	93.1%	N/A

Recently Arrived ELL Students	
	2012
Number of Students Not Tested on ELA Assessment	3

School Promotion by Grade	
	2011
Grade 9	87.1%
Grade 10	91.7%
Grade 11	95.4%
Grade 12	97.4%

Class Size (Percentage by Range) (2011-2012)

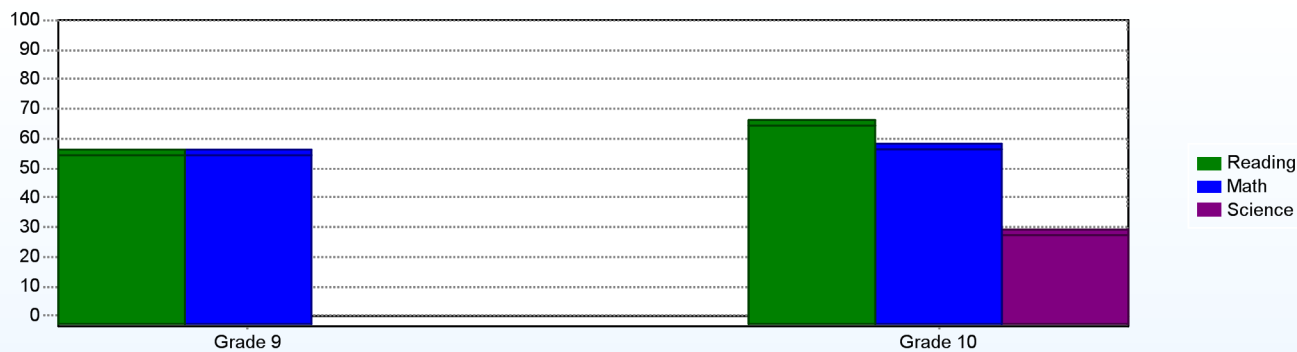


## Student Achievement

Advanced Placement (AP) (2010-2011)	
	2011
Advanced Placement Courses	29
No. of Students Enrolled	210
No. of Exams Taken	136
Total No. of Exams Passed	74

Public School SAT Reasoning Test (Average Score) (2010-2011)				
	School	District	State	National
Math	482	487	477	514
Critical Reading	479	481	472	497
Writing	458	466	457	489
Total	1,419	1,434	1,406	1,500

Percentage of Students Meeting State Standards (2011-2012)



## Exemplary Programs

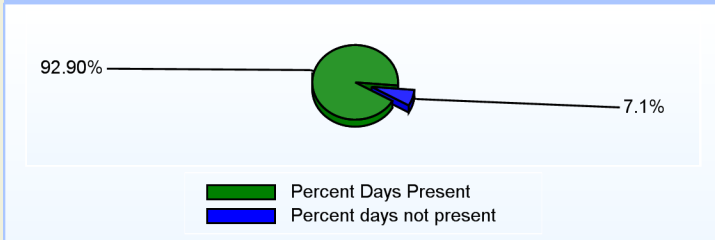
Brandywine High School has several exemplary programs. Currently, Brandywine High School offers 16 Advanced Placement courses, and 21 Honors level courses. Advanced Placement courses include: English 11 (Language) and 12 (Literature), United States History, Modern European History, Government & Politics: US, Studio Art, Calculus AB, Calculus BC, Statistics, Physics, Biology, Chemistry, Environmental Science, French, Spanish, and Psychology. Fine Arts, Dance, Culinary Arts and Business are very popular with Brandywine students, and the award-winning Band Program has received widespread recognition for its outstanding performances.

## Student - School Safety and Discipline

## Number of Reported Offenses (2011-2012)

	<u>School</u>	<u>District</u>	<u>State</u>
School Crimes (Title 14, Delaware Code, §4112)	17	124	957
Department of Education (DOE) Offenses	67	1544	10291
All School Safety Policy in Place	Yes		

## Percent Days Present (2011-2012)



## Suspensions and Expulsions

	<u>2012</u>
Number of Suspensions	1385
Number of Expulsions	1
Count of Students Suspended/Expelled	349
September 30 Enrollment	999
Percent of Students Suspended/Expelled	35%
District Percentage	16%
State Percentage	15%

## Our Staff

## Number of Instructional Staff

	<u>2012</u>
Teachers	71
Librarians	1
Pupil Support	6
Total	78

## Staff by Race/Ethnicity

	<u>2012</u>
American Indian	1.3%
African American	12.8%
Asian American	1.3%
Hispanic	2.6%
White	82.1%

## Staffing Ratios

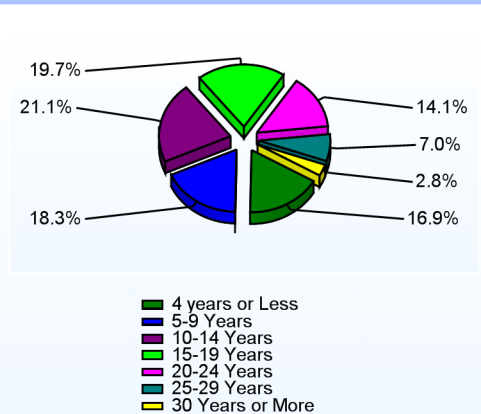
	<u>2012</u>
Students Per Teacher	14
Students Per Administrator	333
Students Per Instructional Staff	14
Students Per Pupil Support Staff	182
School Staff Per Administrator	35

## Staff Qualifications

## Percentage of Classes Taught by Highly Qualified Teachers (2011-2012)

	<u>Total Classes</u>	<u>% Highly Qualified</u>	<u>% Not Highly Qualified</u>
English	48	100.0%	0.0%
Arts	61	100.0%	0.0%
Foreign Languages	31	80.6%	19.4%
Science	52	100.0%	0.0%
Mathematics	51	100.0%	0.0%
Social Studies	16	100.0%	0.0%
History	31	100.0%	0.0%

## Years of Teaching Experience (2011-2012)



## Education Level

	<u>2012</u>
Percent with Masters Degree and Above	58.8%
Percent Holding National Board for Professional Teaching Standards	5.6%

## Curriculum Highlights

Fast Math—students begin their math program with Algebra II in 9th grade and can graduate with up to 6 credits in math, including 4 credits of A.P. math. Culinary Arts and Business Education are popular with students and offer pathways that lead to work after high school and college. The Fine Arts Program has an excellent reputation, and offers a wide variety of courses. Marching band has been Chapter Nine Champions in the Tournament of Bands Program for 14 of the last 18 years. They have also been in the top ten at the Atlantic Coast Championships 13 of the last 18 years; the band program hosts several recognized competitions including the Annual Jazz Festival, now in its 35th year, and the Annual Band Classic, now in its 18th year.

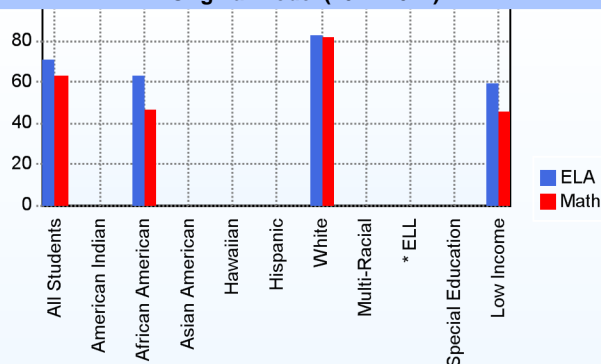
## Graduation Rate - ESEA 4 Year Adjusted

	2010	2011
	ESEA	ESEA
All Students	81.7%	79.4%
American Indian	0.0%	0.0%
African American	68.2%	68.3%
Asian American	75.0%	100.0%
Hispanic	77.8%	64.3%
White	92.7%	88.7%
Multi-Racial		66.7%
English Language Learner	62.5%	66.7%
Special Education	57.5%	53.8%
Low Income	67.7%	66.0%

## AYP

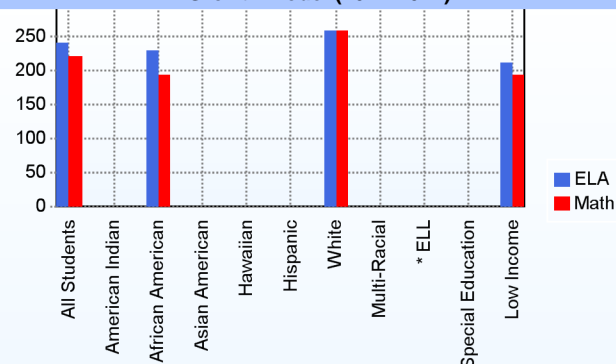
Only groups with greater than 40 students are reported

Original Model (2011-2012)



\* English Language Learner

Growth Model (2011-2012)



\* English Language Learner

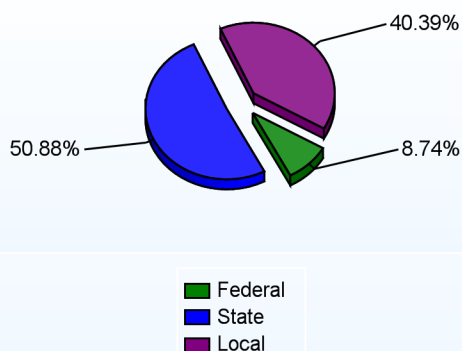
## % Test Participation (2011-2012)

	ELA	Math	ELA Goal	Math Goal
All Students	100	100	95	95
American Indian	*	*	95	95
African American	100	100	95	95
Asian American	*	*	95	95
Hawaiian	*	*	95	95
Hispanic	*	*	95	95
White	100	100	95	95
Multi-Racial	*	*	95	95
English Language Learner	*	*	95	95
Special Education	*	*	95	95
Low Income	100	100	95	95

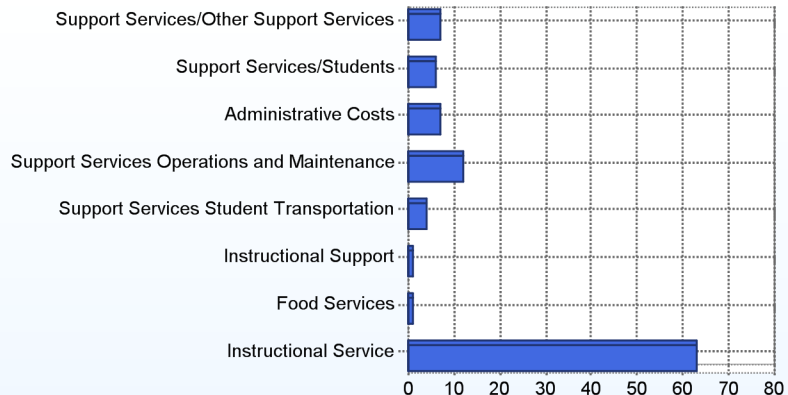
### School Finances

District Expenditure per Pupil (2010-2011): \$13,250

District Sources of Revenue (2010-2011)



Percent District Allocation of Current Expenses by Category (2010-2011)



### School Salary Allocation

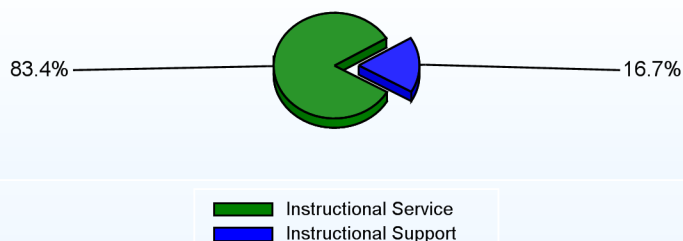
Instructional Service

	2012
Teachers	75.1%
Librarians	1.3%
Instructional Support	0.8%
Pupil Support	6.2%
Total	83.4%

Instructional Support

	2012
Administration	5.3%
Secretaries	2.4%
Food Services	2.7%
Maintenance	6.3%
Total	16.7%

Instructional vs. Support (2011-2012)



For further information and detailed reports, visit

<http://profiles.doe.k12.de.us>

or contact your local school district office.

Glossary: <http://profiles.doe.k12.de.us/glossary.aspx>



#### Delaware Department of Education

John G. Townsend Building  
401 Federal Street, Suite #2  
Dover, Delaware, 19901 - 3639  
Phone: (302) 735-4000



**District:** Brandywine School District  
**Address:** 2501 Ebright Road, Wilmington DE 19810  
**Principal:** Anne Lambert  
**AYP:** Met

**Telephone:** (302) 475-3951  
**Web:** [www.brandywineschools.org/concord/site/](http://www.brandywineschools.org/concord/site/)

## School Demographics

Fall Enrollment		
	2011	2012
Grade 9	374	308
Grade 10	361	344
Grade 11	325	341
Grade 12	293	322
Total	1353	1315

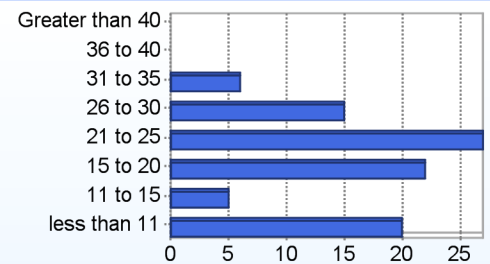
Enrollment by Race/Ethnicity		
	2011	2012
African American	31.2%	31.1%
American Indian	0.4%	0.2%
Asian	5.2%	5.9%
Hispanic/Latino	2.1%	2.9%
White	60.2%	58.9%
Multi-Racial	0.9%	0.9%

Other Student Characteristics		
	2011	2012
English Language Learner	0.6%	0.8%
Low Income	25.6%	29.0%
Special Education	6.6%	6.8%
Enrolled for Full Year	96.3%	N/A

Recently Arrived ELL Students	
	2012
Number of Students Not Tested on ELA Assessment	2

School Promotion by Grade	
	2011
Grade 9	90.6%
Grade 10	96.7%
Grade 11	98.2%
Grade 12	98.3%

Class Size (Percentage by Range) (2011-2012)

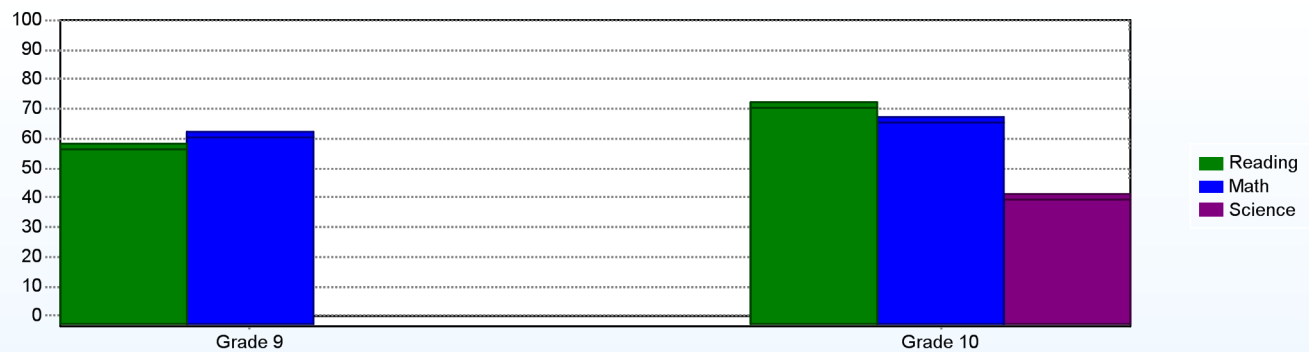


## Student Achievement

Advanced Placement (AP) (2010-2011)	
	2011
Advanced Placement Courses	29
No. of Students Enrolled	307
No. of Exams Taken	248
Total No. of Exams Passed	125

Public School SAT Reasoning Test (Average Score) (2010-2011)				
	School	District	State	National
Math	497	487	477	514
Critical Reading	487	481	472	497
Writing	475	466	457	489
Total	1,459	1,434	1,406	1,500

Percentage of Students Meeting State Standards (2011-2012)



## Exemplary Programs

The Community-Based Program is designed to meet the educational needs of students with serious and profound learning disabilities. The program provides opportunities for students to get vocational training in community work-study in addition to their regular academic program.

The Visual Arts and Photography programs provide instruction in Art orientation, Ceramics, Sculpture, Drawing, Jewelry, Airbrush, and Photography. The instrumental music program includes Marching, Symphonic, and Jazz bands. The choral music program includes chorus, concert choir, chorale, and madrigals.

Sigma Beta Jr. Fraternity and Alpha Sigma Beta Jr. Sorority are two different clubs designed for primarily African American youth grades 9-12. The goal of the two groups is to learn how to make good choices, develop character, and get involved in the community.

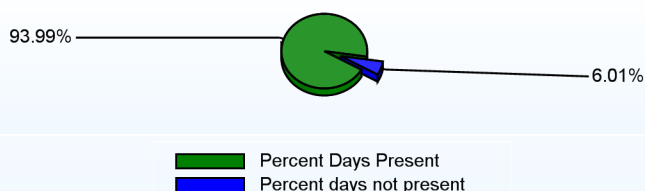
The Sportsmanship Program encourages student-athletes to develop school activities related to sportsmanship and help support our athletic programs.

## Student - School Safety and Discipline

## Number of Reported Offenses (2011-2012)

	<u>School</u>	<u>District</u>	<u>State</u>
School Crimes (Title 14, Delaware Code, §4112)	18	124	957
Department of Education (DOE) Offenses	69	1544	10291
All School Safety Policy in Place	Yes		

## Percent Days Present (2011-2012)



## Suspensions and Expulsions

	<u>2012</u>
Number of Suspensions	558
Number of Expulsions	0
Count of Students Suspended/Expelled	202
September 30 Enrollment	1315
Percent of Students Suspended/Expelled	15%
District Percentage	16%
State Percentage	15%

## Our Staff

## Number of Instructional Staff

	<u>2012</u>
Teachers	81
Librarians	1
Pupil Support	8
Total	89

## Staff by Race/Ethnicity

	<u>2012</u>
American Indian	0.0%
African American	12.2%
Asian American	0.0%
Hispanic	2.2%
White	85.6%

## Staffing Ratios

	<u>2012</u>
Students Per Teacher	16
Students Per Administrator	329
Students Per Instructional Staff	16
Students Per Pupil Support Staff	175
School Staff Per Administrator	29

## Staff Qualifications

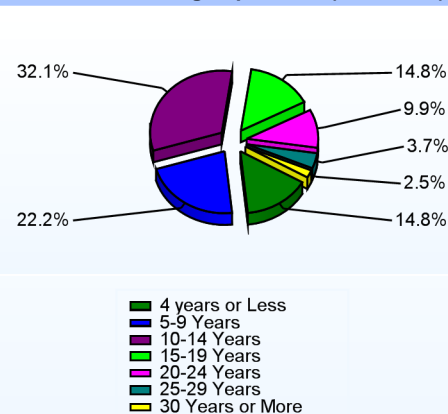
## Percentage of Classes Taught by Highly Qualified Teachers (2011-2012)

	<u>Total Classes</u>	<u>% Highly Qualified</u>	<u>% Not Highly Qualified</u>
English	64	100.0%	0.0%
Arts	74	100.0%	0.0%
Foreign Languages	47	100.0%	0.0%
Science	58	100.0%	0.0%
Mathematics	65	100.0%	0.0%
Civics & Government	2	100.0%	0.0%
Social Studies	10	100.0%	0.0%
History	46	100.0%	0.0%

## Education Level

	<u>2012</u>
Percent with Masters Degree and Above	68.5%
Percent Holding National Board for Professional Teaching Standards	4.7%

## Years of Teaching Experience (2011-2012)



## Curriculum Highlights

Concord has many exemplary programs. Outstanding academic programs are the cornerstone of Concord's success. Over a quarter of our students are on academic Honor Roll each marking period. Each of the curriculum areas has award winning teachers and students. Exemplary elective programs include: visual arts, choral and instrumental music, drama, and technology. We also operate a successful Jobs for Delaware Grads Program, Co-operative Work Experience Program, and an outstanding Community-Based Program to meet the needs of students with exceptional needs. The Science Olympiad, Math League, Academic Bowl, Raider Reader, Leader Corps, National Honor Society, National Science Honor Society, Fall Play, and Spring Musical are among our outstanding co-curricular activities. Every student is encouraged to develop their special area of excellence.

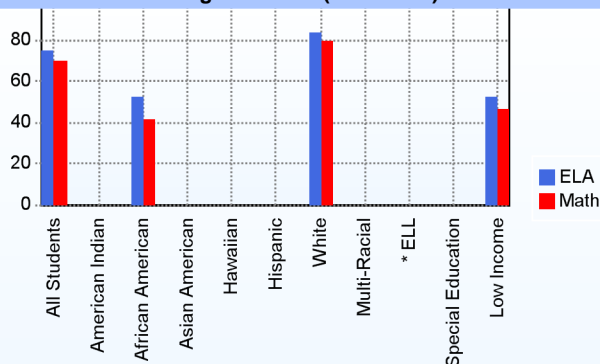
## Graduation Rate - ESEA 4 Year Adjusted

	2010	2011
	ESEA	ESEA
All Students	82.4%	84.2%
American Indian	100.0%	100.0%
African American	72.0%	80.7%
Asian American	90.9%	84.6%
Hispanic	57.1%	75.0%
White	87.4%	86.1%
Multi-Racial		100.0%
English Language Learner	75.0%	80.0%
Special Education	42.4%	54.2%
Low Income	62.8%	72.5%

## AYP

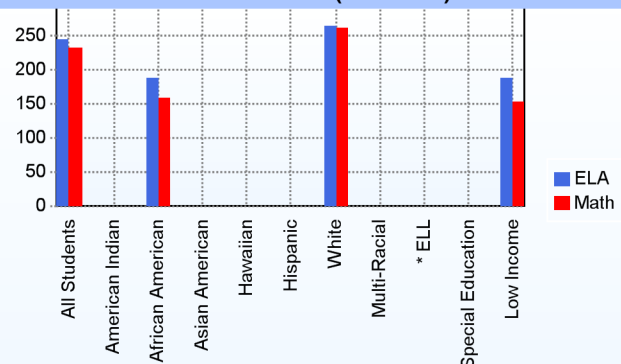
Only groups with greater than 40 students are reported

## Original Model (2011-2012)



\* English Language Learner

## Growth Model (2011-2012)



\* English Language Learner

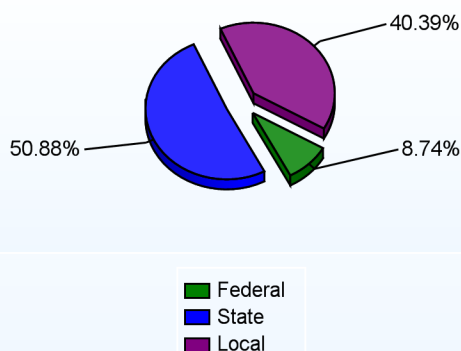
## % Test Participation (2011-2012)

	ELA	Math	ELA Goal	Math Goal
All Students	100	100	95	95
American Indian	*	*	95	95
African American	100	100	95	95
Asian American	*	*	95	95
Hawaiian	*	*	95	95
Hispanic	*	*	95	95
White	100	100	95	95
Multi-Racial	*	*	95	95
English Language Learner	*	*	95	95
Special Education	*	*	95	95
Low Income	100	100	95	95

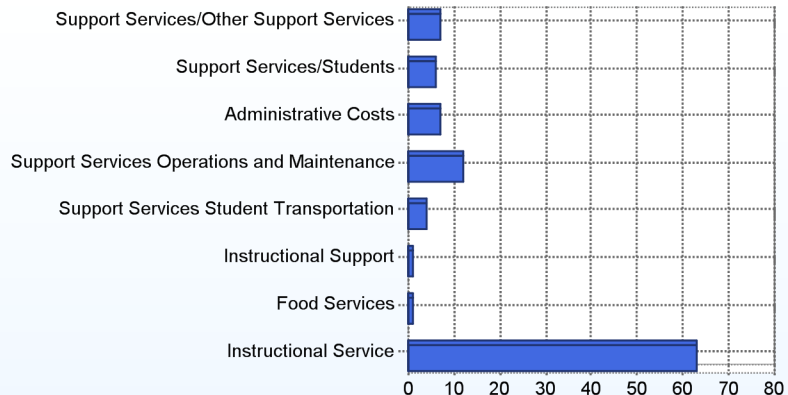
### School Finances

District Expenditure per Pupil (2010-2011): \$13,250

District Sources of Revenue (2010-2011)



Percent District Allocation of Current Expenses by Category (2010-2011)



### School Salary Allocation

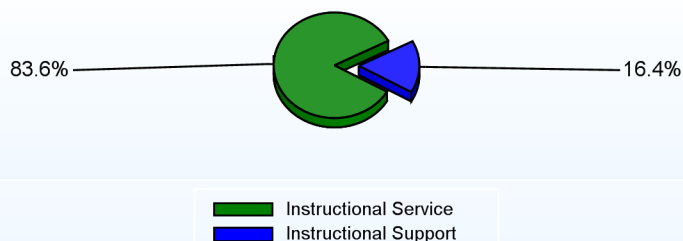
Instructional Service

	2012
Teachers	73.6%
Librarians	1.2%
Instructional Support	0.8%
Pupil Support	8.0%
Total	83.6%

Instructional Support

	2012
Administration	5.9%
Secretaries	2.1%
Food Services	2.3%
Maintenance	6.1%
Total	16.4%

Instructional vs. Support (2011-2012)



For further information and detailed reports, visit

<http://profiles.doe.k12.de.us>

or contact your local school district office.

Glossary: <http://profiles.doe.k12.de.us/glossary.aspx>



#### Delaware Department of Education

John G. Townsend Building  
401 Federal Street, Suite #2  
Dover, Delaware, 19901 - 3639  
Phone: (302) 735-4000

**District:** Brandywine School District

**Telephone:** (302) 762-7125

**Address:** 5201 Washington Street Extension, Wilmington DE 19809

**Web:** [www.brandywineschools.org/mphs/site/](http://www.brandywineschools.org/mphs/site/)

**Principal:** James Simmons

**AYP:** Met

## School Demographics

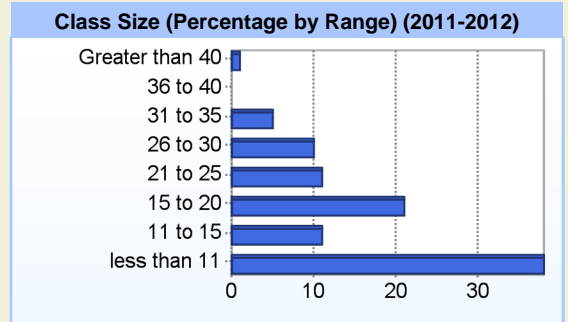
Fall Enrollment		
	2011	2012
Grade 9	234	321
Grade 10	210	188
Grade 11	197	184
Grade 12	226	236
Total	867	929

Enrollment by Race/Ethnicity		
	2011	2012
African American	46.4%	44.5%
American Indian	0.2%	0.2%
Asian	3.2%	3.0%
Hispanic/Latino	4.6%	5.2%
White	45.4%	46.8%
Multi-Racial	0.1%	0.3%

Other Student Characteristics		
	2011	2012
English Language Learner	1.6%	1.2%
Low Income	44.4%	42.9%
Special Education	16.6%	13.6%
Enrolled for Full Year	92.6%	N/A

Recently Arrived ELL Students	
	2012
Number of Students Not Tested on ELA Assessment	0

School Promotion by Grade	
	2011
Grade 9	79.5%
Grade 10	94.3%
Grade 11	99.5%
Grade 12	91.2%

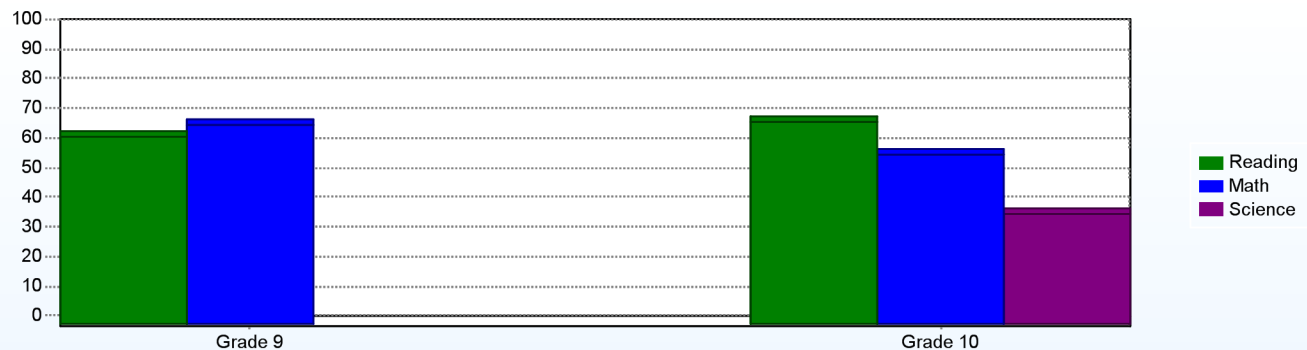


## Student Achievement

Advanced Placement (AP) (2010-2011)	
	2011
Advanced Placement Courses	14
No. of Students Enrolled	151
No. of Exams Taken	80
Total No. of Exams Passed	21

Public School SAT Reasoning Test (Average Score) (2010-2011)				
	School	District	State	National
Math	477	487	477	514
Critical Reading	473	481	472	497
Writing	460	466	457	489
Total	1,410	1,434	1,406	1,500

## Percentage of Students Meeting State Standards (2011-2012)



## Exemplary Programs

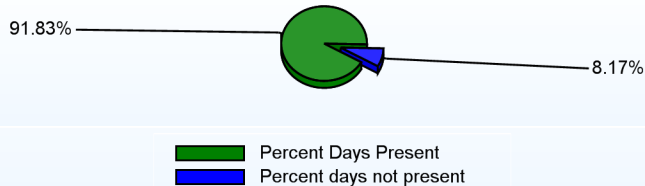
Over 100 students participated in AP exams, while 220 IB examinations were taken in the spring of 2008. Mount Pleasant High School has an outstanding teaching staff, with over sixty five percent holding masters or doctoral degrees. Our school hosts the district's only JROTC magnet program which has U.S. Army affiliation. With our Advancement Via Individual Determination (AVID) program, students are assisted and mentored in their effort towards post-secondary study while taking a higher level rigorous curriculum. The Fine Arts programs continually demonstrate continued excellence while representing the school in our community with outreach programs such as the Meals on Wheels program. And, our athletic teams are consistently successful throughout both conference and state competition. Mount Pleasant also offers the International Baccalaureate Diploma Program in conjunction with the district's IB Middle Years Program housed at Talley Middle School.

## Student - School Safety and Discipline

## Number of Reported Offenses (2011-2012)

	<u>School</u>	<u>District</u>	<u>State</u>
School Crimes (Title 14, Delaware Code, §4112)	18	124	957
Department of Education (DOE) Offenses	72	1544	10291
All School Safety Policy in Place	Yes		

## Percent Days Present (2011-2012)



## Suspensions and Expulsions

	<u>2012</u>
Number of Suspensions	729
Number of Expulsions	0
Count of Students Suspended/Expelled	285
September 30 Enrollment	929
Percent of Students Suspended/Expelled	31%
District Percentage	16%
State Percentage	15%

## Our Staff

## Number of Instructional Staff

	<u>2012</u>
Teachers	67
Librarians	1
Pupil Support	9
Total	77

## Staff by Race/Ethnicity

	<u>2012</u>
American Indian	0.0%
African American	14.1%
Asian American	0.0%
Hispanic	0.0%
White	85.9%

## Staffing Ratios

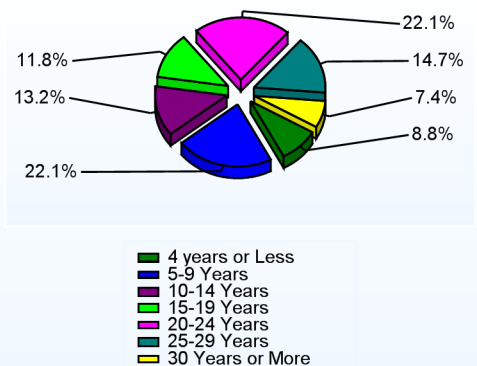
	<u>2012</u>
Students Per Teacher	14
Students Per Administrator	232
Students Per Instructional Staff	13
Students Per Pupil Support Staff	107
School Staff Per Administrator	27

## Staff Qualifications

## Percentage of Classes Taught by Highly Qualified Teachers (2011-2012)

	<u>Total Classes</u>	<u>% Highly Qualified</u>	<u>% Not Highly Qualified</u>
English	54	100.0%	0.0%
Arts	50	100.0%	0.0%
Foreign Languages	29	89.7%	10.3%
Science	48	100.0%	0.0%
Mathematics	57	100.0%	0.0%
Civics & Government	5	100.0%	0.0%
Social Studies	7	100.0%	0.0%
History	40	100.0%	0.0%

## Years of Teaching Experience (2011-2012)



## Education Level

	<u>2012</u>
Percent with Masters Degree and Above	65.5%
Percent Holding National Board for Professional Teaching Standards	4.4%

## Curriculum Highlights

Mount Pleasant High School is a comprehensive high school located in the northern suburbs of Wilmington, Delaware. The 980 students are enrolled in grades nine through twelve. Approximately \$4,650,000 was awarded in grants and scholarships to the graduating class of 2008 who will attend institutions of higher learning such as: The United States Naval Academy, Harvard University, Colorado College, the University of Southern California, Swarthmore College, the University of North Carolina, Georgetown University, the University of Delaware, Delaware Technical College, Wilmington University and other institutions.

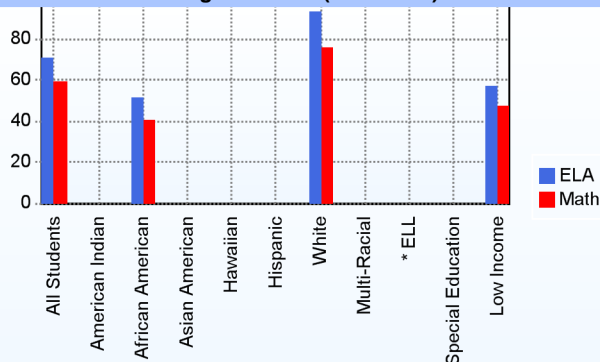
## Graduation Rate - ESEA 4 Year Adjusted

	2010	2011
	<u>ESEA</u>	<u>ESEA</u>
All Students	74.8%	80.3%
African American	72.1%	78.6%
Asian American	75.0%	100.0%
Hispanic	71.4%	100.0%
White	78.1%	80.4%
English Language Learner	60.0%	100.0%
Special Education	45.9%	48.6%
Low Income	65.9%	75.4%

## AYP

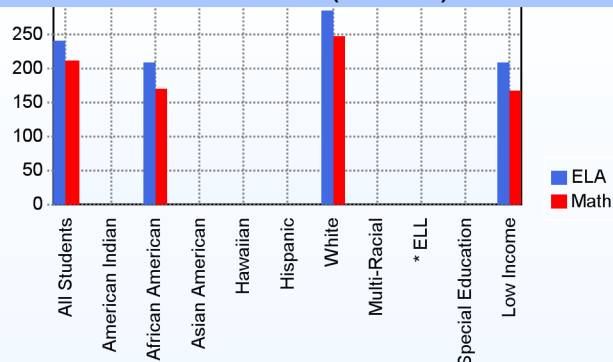
Only groups with greater than 40 students are reported

## Original Model (2011-2012)



\* English Language Learner

## Growth Model (2011-2012)



\* English Language Learner

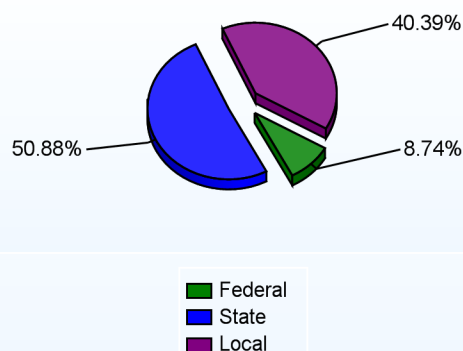
## % Test Participation (2011-2012)

	<u>ELA</u>	<u>Math</u>	<u>ELA Goal</u>	<u>Math Goal</u>
All Students	100	100	95	95
American Indian	*	*	95	95
African American	100	100	95	95
Asian American	*	*	95	95
Hawaiian	*	*	95	95
Hispanic	*	*	95	95
White	100	100	95	95
Multi-Racial	*	*	95	95
English Language Learner	*	*	95	95
Special Education	*	*	95	95
Low Income	100	100	95	95

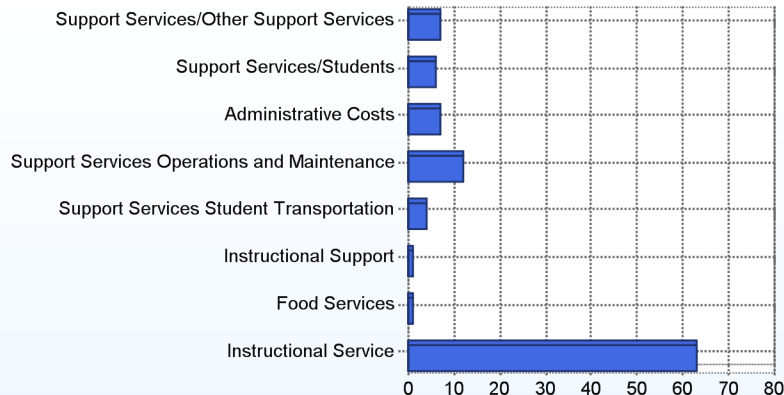
### School Finances

District Expenditure per Pupil (2010-2011): \$13,250

District Sources of Revenue (2010-2011)



Percent District Allocation of Current Expenses by Category (2010-2011)



### School Salary Allocation

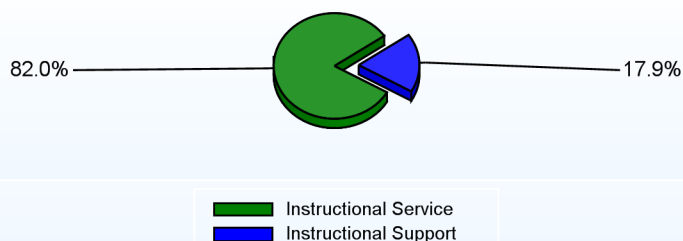
Instructional Service

	2012
Teachers	69.8%
Librarians	1.1%
Instructional Support	2.2%
Pupil Support	8.9%
Total	82.0%

Instructional Support

	2012
Administration	6.3%
Secretaries	2.4%
Food Services	2.0%
Maintenance	5.4%
Not Classified	1.8%
Total	17.9%

Instructional vs. Support (2011-2012)



For further information and detailed reports, visit

<http://profiles.doe.k12.de.us>

or contact your local school district office.

Glossary: <http://profiles.doe.k12.de.us/glossary.aspx>



#### Delaware Department of Education

John G. Townsend Building  
401 Federal Street, Suite #2  
Dover, Delaware, 19901 - 3639  
Phone: (302) 735-4000