



District: Appoquinimink School District

Telephone: (302) 376-4128

Address: Tony Marchio Building, 313 South Fifth Street, Odessa DE 19730

Web: www.apposchooldistrict.com/

School District Superintendent: Matt Burrows

School Board Members

Julie Johnson, President

Charlisa Edelin

Edna Cale

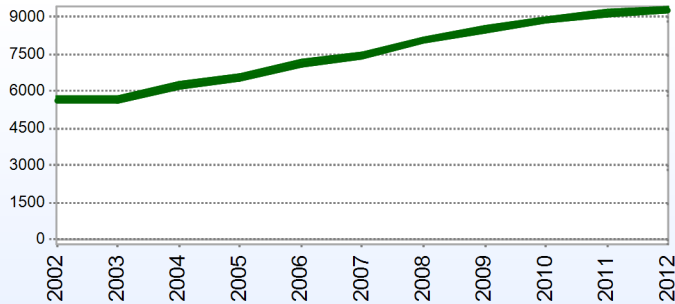
Norman Abrams, Vice President

Richard Forsten

Matt Burrows, Executive Secretary

District Information

Enrollment History



Students Who Reside in the District

	2012
Number of Students in Public Schools (Non Charter)	9,433
Percent of Students in Public Schools (Non Charter)	100%

Fall Enrollment

	2011	2012
Pre-Kindergarten	99	93
Kindergarten	642	625
Grade 1	736	695
Grade 2	770	731
Grade 3	763	784
Grade 4	737	778
Grade 5	718	755
Grade 6	763	766
Grade 7	709	780
Grade 8	739	713
Grade 9	760	761
Grade 10	706	726
Grade 11	614	646
Grade 12	563	580
Total	9,319	9,433

Enrollment by Race/Ethnicity

	2009	2010
American Indian	0.5%	0.4%
African American	24.6%	25.3%
Asian American	4.3%	4.4%
Hispanic	4.5%	4.4%
White	66.1%	65.5%

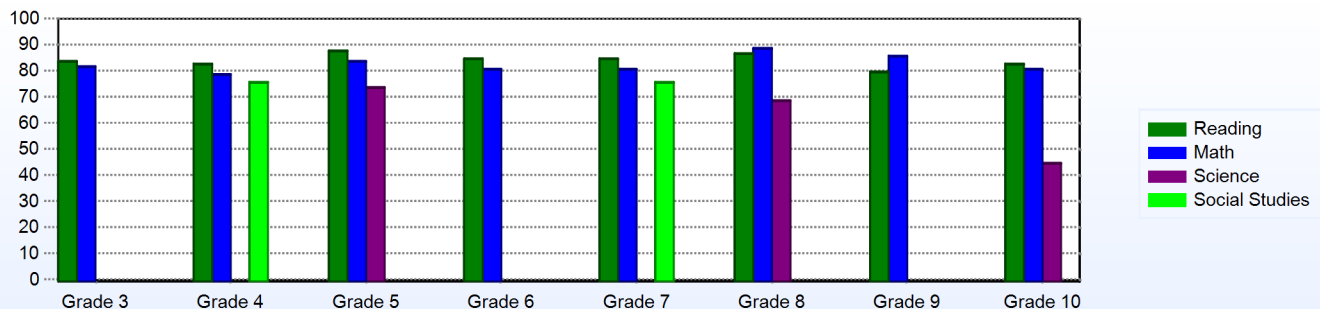
Other Student Characteristics

	2011	2012
English Language Learner	1.6%	1.3%
Low Income	20.8%	21.7%
Special Education	9.4%	9.3%
Enrolled for Full Year	94.9%	N/A%

Advanced Placement (AP)

	2011
Advanced Placement Courses	24
No. of Students Enrolled	357
No. of Exams Taken	342
Total No. of Exams Passed	256

Percentage of Students Meeting State Standards



District Staff

Number of Staff

	2012
Teachers	581
Librarians	9
Instructional Support	112
Pupil Support	68
Administrators	49
Secretaries	51
Food Service	67
Maintenance	92
Not Classified	11
Total	1,040

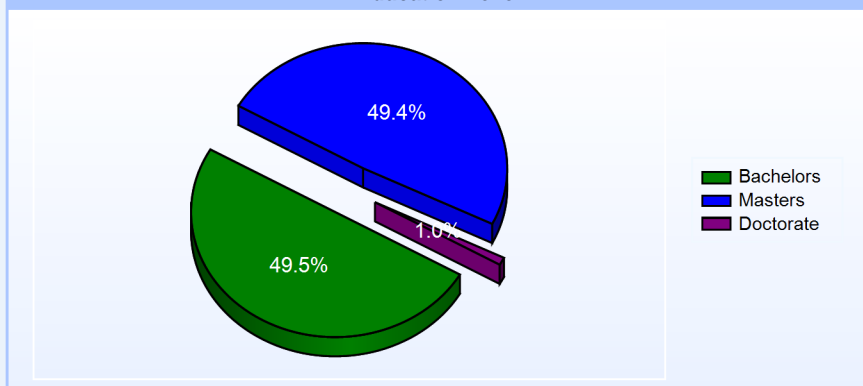
Percentage of Classes Taught by Highly Qualified Teachers

	Total Classes	% Highly Qualified
English	124	100.0%
Reading/ Language Arts	97	100.0%
Arts	197	100.0%
Foreign Languages	280	97.9%
Science	209	99.5%
Mathematics	218	99.1%
Economics	1	100.0%
Social Studies	196	94.9%
History	11	100.0%
Elementary General	199	100.0%

School Choice

	2013
Number of Schools with Choice Students:	15
Number of Local Choice Students: (choice students from the same district)	431
Number of State Choice Students: (choice students from another district)	96
Number of Federal Choice Students: (NCLB School Under Improvement)	1
Number of Federal Choice Students: (NCLB Unsafe School)	0
Number of Federal Choice Students: (NCLB Victim of a Violent Felony)	1

Education Level



Graduation Rate - ESEA 4 Year Adjusted

	2010	2011
	ESEA	ESEA
All Students	82.3%	86.8%
American Indian	100.0%	100.0%
African American	81.1%	83.6%
Asian American	88.2%	88.9%
Hispanic	58.3%	85.7%
White	83.8%	87.8%
Multi-Racial		100.0%
English Language Learner	50.0%	83.3%
Special Education	62.1%	55.9%
Low Income	64.1%	75.7%

Year End Position

	Year-End Balance	Expenditures	Percentage
2007		\$68,923,009.00	
2008	\$4,267,808.00	\$77,916,291.00	5.5%
2009	\$5,396,828.00	\$83,606,510.00	6.5%
2010	\$5,177,303.00	\$86,314,559.00	6.0%
2011	\$3,499,215.00	\$92,385,670.00	3.8%

Persistently Dangerous School

The school district has no "Persistently Dangerous Schools"

District Information

District DropOut Information

	<u>2009</u>		<u>2010</u>		<u>2011</u>	
	<u>Count</u>	<u>Percent</u>	<u>Count</u>	<u>Percent</u>	<u>Count</u>	<u>Percent</u>
District	60	2.5%	102	4.1%	63	2.4%

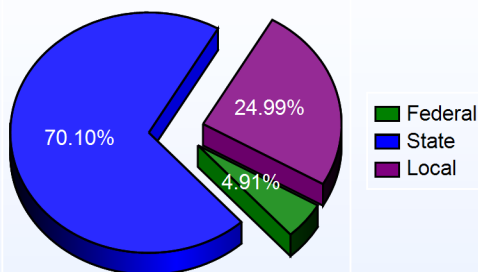
Delaware Accountability

<u>School Category</u>	<u>School</u>	<u>AYP</u>
Other	Appoquinimink Early Childhood Center	Met
	Cedar Lane Early Childhood Center	Met
	Townsend Early Childhood Center	Met
Elementary	Brick Mill Elementary School	Met
	Cedar Lane Elementary School	Met
	Loss (Olive B.) Elementary School	Met
	Silver Lake Elementary School	Met
	Townsend Elementary School	Met
Middle	Meredith (Everett) Middle School	Met
	Redding (Louis L.) Middle School	Met
	Waters (Alfred G.) Middle School	Met
High School	Appoquinimink High School	Met
	Middletown High School	Met

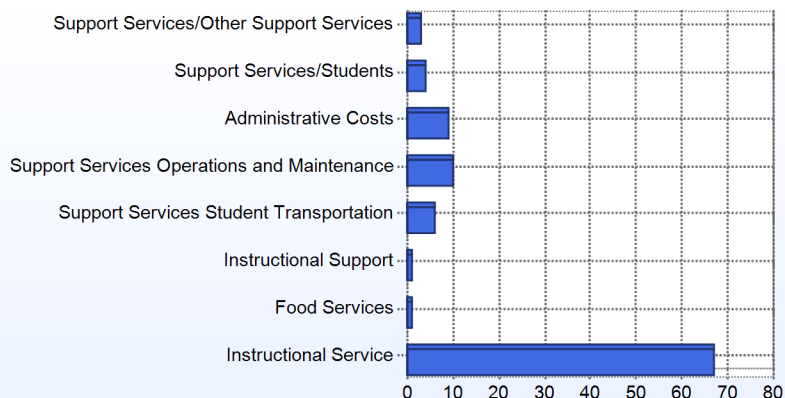
School Finances

District Expenditure per Pupil: \$9,973

District Sources of Revenue



Percent District Allocation of Current Expenses by Category



District Salary Allocation

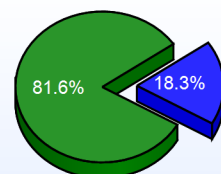
Instructional Service

	2012
Teachers	66.7%
Librarians	1.2%
Instructional Support	6.7%
Pupil Support	7.0%
Total	81.6%

Instructional Support

	2012
Administration	6.1%
Secretaries	3.0%
Food Services	2.7%
Maintenance	6.0%
Not Classified	0.5%
Total	18.3%

Instructional Vs Support



Instructional Service
Instructional Support

Scheduled Teacher Salaries

	Bachelor		Master			Doctorate	
	4 years or Less	15-19 Years	4 years or Less	15-19 Years	30 Years or More	15-19 Years	30 Years or More
Scheduled Teacher Salaries	\$39,363	\$56,776	\$45,448	\$69,224	\$68,825	\$79,066	\$92,565

For further information and detailed reports, visit

<http://profiles.doe.k12.de.us>

or contact your local district office.



Delaware Department of Education

John G. Townsend Building
401 Federal Street, Suite #2
Dove, Delaware, 19901 - 3639
Phone: (302) 735-4000

District: Appoquinimink School District

Telephone: (302) 378-5023

Address: 200 East Cochran Street, Middletown DE 19709

Web: www.sleschool.org/

Principal: Cyndi Clay

AYP: Met

School Demographics

Fall Enrollment		
	2011	2012
Grade 1	97	117
Grade 2	109	93
Grade 3	115	108
Grade 4	84	122
Grade 5	93	81
Total	498	521

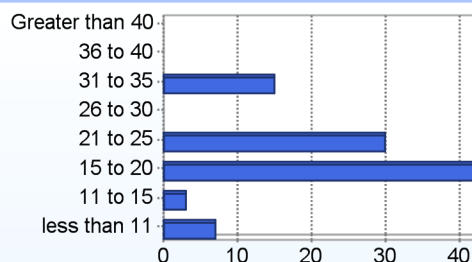
Enrollment by Race/Ethnicity		
	2011	2012
African American	30.9%	28.2%
American Indian	0.6%	0.4%
Asian	2.2%	2.7%
Hispanic/Latino	7.6%	7.9%
White	56.2%	57.0%
Multi-Racial	2.4%	3.8%

Other Student Characteristics		
	2011	2012
English Language Learner	3.0%	2.3%
Low Income	34.5%	35.7%
Special Education	9.4%	9.6%
Enrolled for Full Year	96.2%	N/A

Recently Arrived ELL Students	
	2012
Number of Students Not Tested on ELA Assessment	2

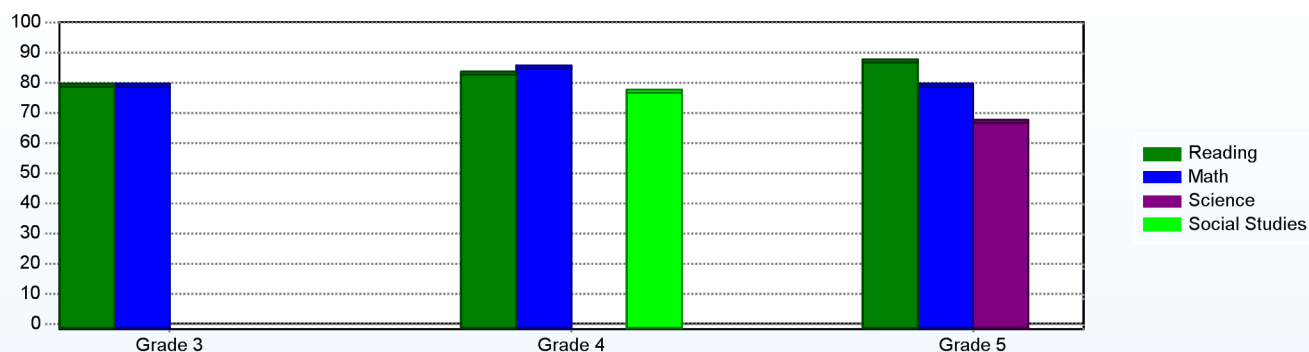
School Promotion by Grade	
	2011
Grade 1	94.8%
Grade 2	100.0%
Grade 3	100.0%
Grade 4	100.0%
Grade 5	100.0%

Class Size (Percentage by Range) (2011-2012)



Student Achievement

Percentage of Students Meeting State Standards (2011-2012)



Exemplary Programs

Vegetables anyone?

One of Silver Lake's Talent Development Clusters was Healthy Food + Healthy Exercise= Healthy Me. A group of 4th and 5th graders under the facilitation of 2 teachers and members of St. Paul's United Methodist Church built two raised garden beds. The vegetables that are growing are carrots, zucchini, strawberries, string beans, tomatoes, and types of lettuce. This will be continued during the 2011-12 school year.

Mentoring Program

This year each staff member was trained by Creative Mentoring at the beginning of the year and selected a student to mentor. This extended through our cafeteria staff, administrative team, and secretary. The students were mentored for 30 minutes at least once a week. We also had fifteen St. Andrew's students and eight St. Paul's UMC members mentoring making a total of 78 students being mentored. Students looked forward to their weekly interaction of making a crafts, talking, or reviewing school work.

Student - School Safety and Discipline

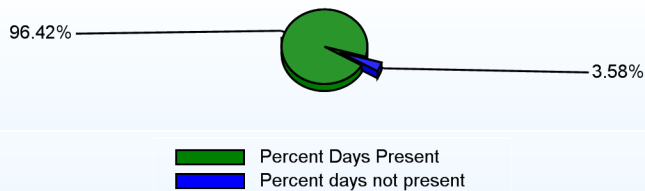
Number of Reported Offenses (2011-2012)

	<u>School</u>	<u>District</u>	<u>State</u>
School Crimes (Title 14, Delaware Code, §4112)	4	71	957
Department of Education (DOE) Offenses	37	658	10291
All School Safety Policy in Place	Yes		

Suspensions and Expulsions

	<u>2012</u>
Number of Suspensions	112
Number of Expulsions	0
Count of Students Suspended/Expelled	46
September 30 Enrollment	521
Percent of Students Suspended/Expelled	9%
District Percentage	11%
State Percentage	15%

Percent Days Present (2011-2012)



Our Staff

Number of Instructional Staff

	<u>2012</u>
Teachers	33
Librarians	1
Pupil Support	5
Total	39

Staff by Race/Ethnicity

	<u>2012</u>
American Indian	0.0%
African American	5.0%
Asian American	0.0%
Hispanic	0.0%
White	95.0%

Staffing Ratios

	<u>2012</u>
Students Per Teacher	16
Students Per Administrator	261
Students Per Instructional Staff	12
Students Per Pupil Support Staff	116
School Staff Per Administrator	30

Staff Qualifications

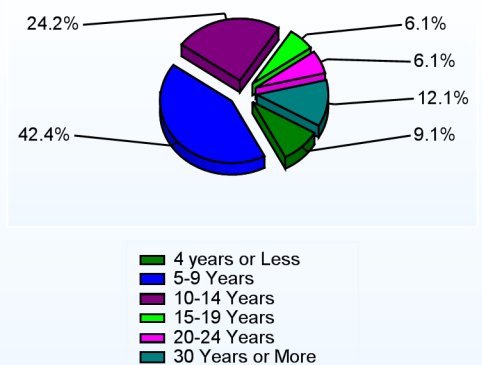
Percentage of Classes Taught by Highly Qualified Teachers (2011-2012)

	<u>Total Classes</u>	<u>% Highly Qualified</u>	<u>% Not Highly Qualified</u>
Arts	4	100.0%	0.0%
Foreign Languages	3	100.0%	0.0%
Elementary General	26	100.0%	0.0%

Education Level

	<u>2012</u>
Percent with Masters Degree and Above	48.0%

Years of Teaching Experience (2011-2012)



Curriculum Highlights

Words on Wheels

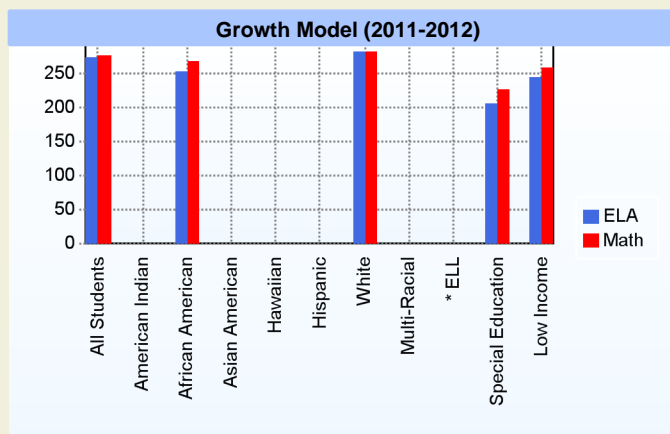
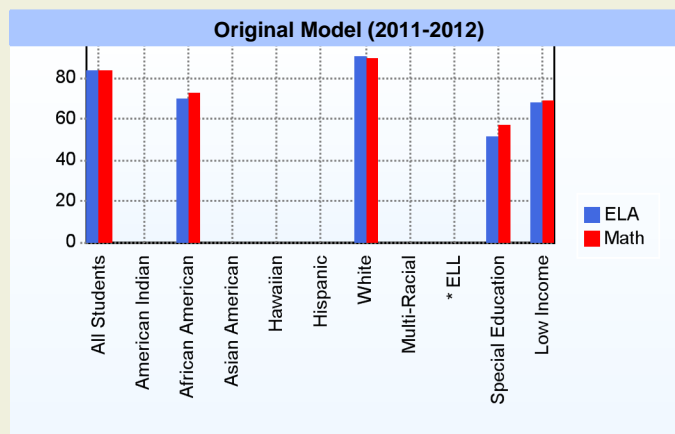
At Silver Lake students "Learn to Read, Read to Think, and Think to Lead". We are implementing Learning Focused Strategies that are used to teach the common core curriculum. Our staff uses technology and other 21st Century Skills to make our students successful and have purchased 10 l pads this year for student use. Silver Lake's Bookmobile also served over 600 students this summer in 4 different community locations.

7 Habits

Following Covey's "The 7 Habits of Highly Effective People", SLE's vision is to empower our students to become successful learners and leaders. Some of our fifth graders, known as the "Bee Team", are responsible for giving tours to new students and orientating them to Silver Lake. Additionally, each student at Silver Lake has a data notebook for goal setting and assessment recording. Grade level teams work in professional learning communities to look at the assessment data and adjust their teaching to reach the students' needs.

AYP

Only groups with greater than 40 students are reported



* English Language Learner

* English Language Learner

% Test Participation (2011-2012)

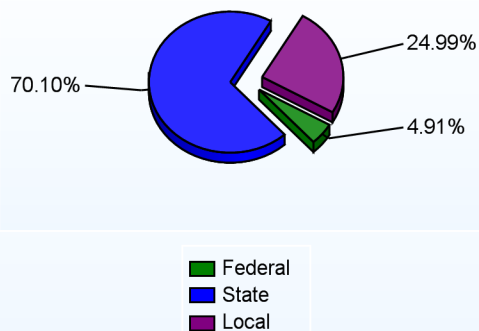
	<u>ELA</u>	<u>Math</u>	<u>ELA Goal</u>	<u>Math Goal</u>
All Students	100	100	95	95
American Indian	*	*	95	95
African American	100	100	95	95
Asian American	*	*	95	95
Hawaiian	*	*	95	95
Hispanic	*	*	95	95
White	100	100	95	95
Multi-Racial	*	*	95	95
English Language Learner	*	*	95	95
Special Education	100	100	95	95
Low Income	100	100	95	95



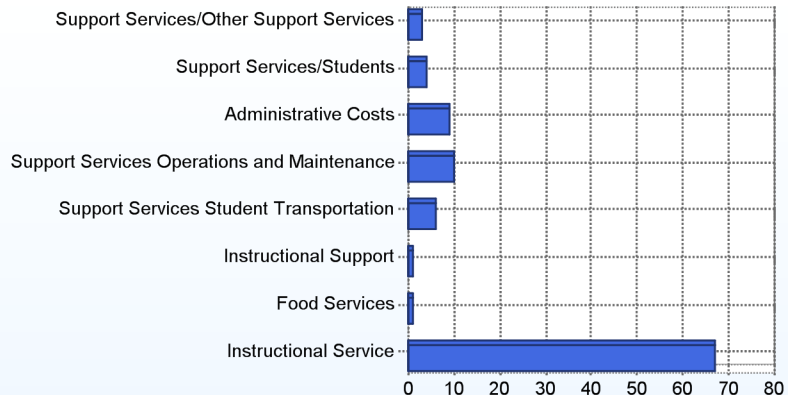
School Finances

District Expenditure per Pupil (2010-2011): \$9,973

District Sources of Revenue (2010-2011)



Percent District Allocation of Current Expenses by Category (2010-2011)



School Salary Allocation

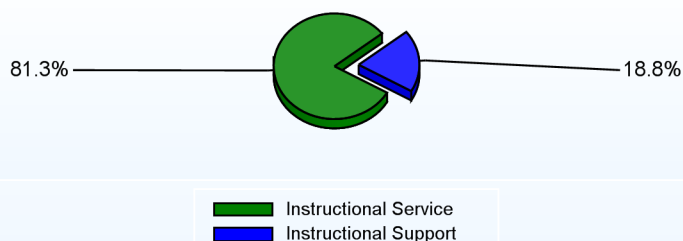
Instructional Service

	2012
Teachers	64.3%
Librarians	2.1%
Instructional Support	8.9%
Pupil Support	6.0%
Total	81.3%

Instructional Support

	2012
Administration	6.9%
Secretaries	3.0%
Food Services	3.5%
Maintenance	5.4%
Total	18.8%

Instructional vs. Support (2011-2012)



For further information and detailed reports, visit

<http://profiles.doe.k12.de.us>

or contact your local school district office.

Glossary: <http://profiles.doe.k12.de.us/glossary.aspx>



Delaware Department of Education

John G. Townsend Building
401 Federal Street, Suite #2
Dover, Delaware, 19901 - 3639
Phone: (302) 735-4000

District: Appoquinimink School District

Telephone: (302) 378-5045

Address: 1259 Cedar Lane Road, Middletown DE 19709

Web: www.cedarlaneschool.org/

Principal: Donna Kolakowski

AYP: Met

School Demographics

Fall Enrollment		
	2011	2012
Grade 1	127	112
Grade 2	123	139
Grade 3	117	133
Grade 4	113	119
Grade 5	135	121
Total	615	624

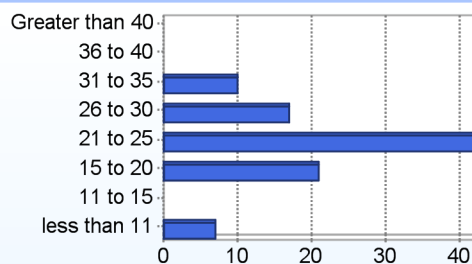
Enrollment by Race/Ethnicity		
	2011	2012
African American	13.5%	14.6%
American Indian	0.2%	0.5%
Asian	2.8%	2.7%
Hispanic/Latino	2.6%	2.6%
White	78.5%	77.4%
Multi-Racial	2.4%	2.2%

Other Student Characteristics		
	2011	2012
English Language Learner	1.0%	0.8%
Low Income	11.5%	11.5%
Special Education	7.0%	6.4%
Enrolled for Full Year	98.7%	N/A

Recently Arrived ELL Students	
	2012
Number of Students Not Tested on ELA Assessment	1

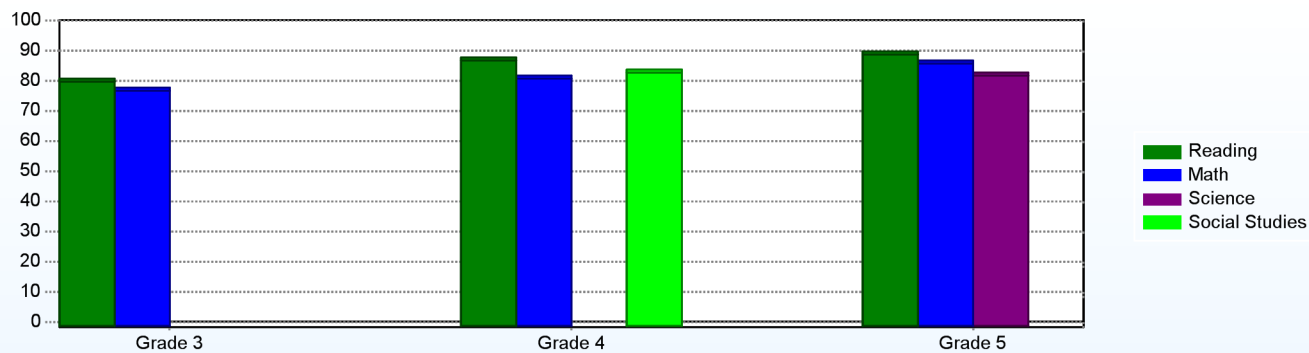
School Promotion by Grade	
	2011
Grade 1	100.0%
Grade 2	100.0%
Grade 3	99.1%
Grade 4	100.0%
Grade 5	100.0%

Class Size (Percentage by Range) (2011-2012)



Student Achievement

Percentage of Students Meeting State Standards (2011-2012)



Exemplary Programs

The everyday learning experiences in which our students are involved constitute CLE's most exemplary programs. Enthusiasm is nurtured in both students and staff. We are committed to providing each student with the means for continuous learning. Our lessons are designed to be interesting and relevant to real life. We challenge our students by planning projects, activities, and assessments, which tap a wide range of learning styles and talents. We offer Talent Development courses for grades one through five. The goal of talent development is to extend the learning opportunities to all students in places where they excel and have an interest. Hands-on learning and continuous progress are stressed through an integrated curriculum. Technology is used as a learning tool.

Student - School Safety and Discipline

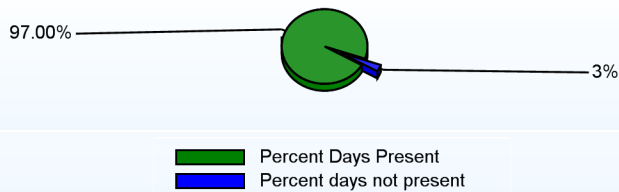
Number of Reported Offenses (2011-2012)

	<u>School</u>	<u>District</u>	<u>State</u>
School Crimes (Title 14, Delaware Code, §4112)		71	957
Department of Education (DOE) Offenses	8	658	10291
All School Safety Policy in Place	Yes		

Suspensions and Expulsions

	<u>2012</u>
Number of Suspensions	2
Number of Expulsions	0
Count of Students Suspended/Expelled	2
September 30 Enrollment	624
Percent of Students Suspended/Expelled	0%
District Percentage	11%
State Percentage	15%

Percent Days Present (2011-2012)



Our Staff

Number of Instructional Staff

	<u>2012</u>
Teachers	38
Librarians	1
Pupil Support	4
Total	43

Staff by Race/Ethnicity

	<u>2012</u>
American Indian	0.0%
African American	2.2%
Asian American	0.0%
Hispanic	2.2%
White	95.6%

Staffing Ratios

	<u>2012</u>
Students Per Teacher	16
Students Per Administrator	312
Students Per Instructional Staff	14
Students Per Pupil Support Staff	142
School Staff Per Administrator	31

Staff Qualifications

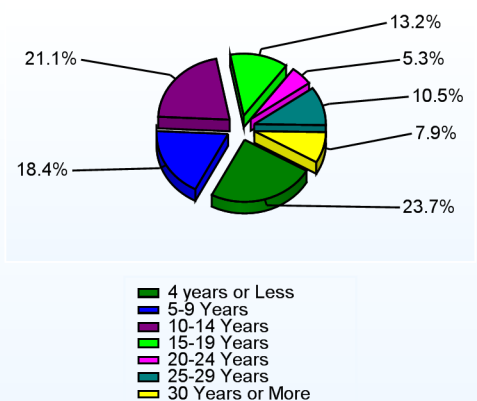
Percentage of Classes Taught by Highly Qualified Teachers (2011-2012)

	<u>Total Classes</u>	<u>% Highly Qualified</u>	<u>% Not Highly Qualified</u>
Arts	4	100.0%	0.0%
Foreign Languages	3	100.0%	0.0%
Elementary General	27	100.0%	0.0%

Education Level

	<u>2012</u>
Percent with Masters Degree and Above	51.9%

Years of Teaching Experience (2011-2012)

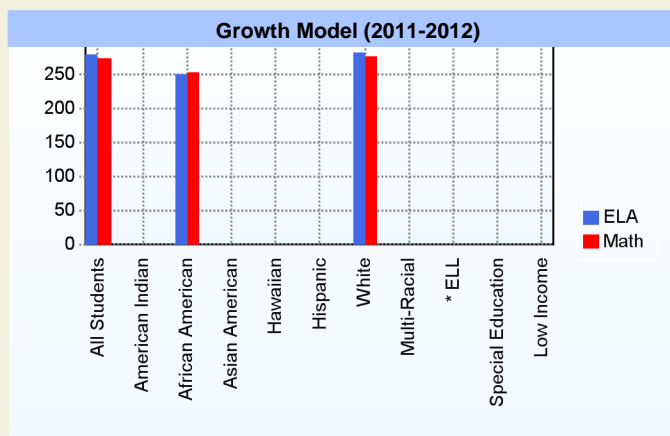
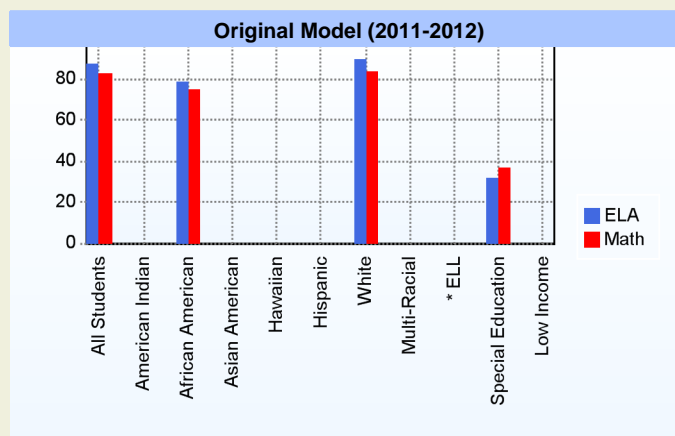


Curriculum Highlights

Cedar Lane Elementary implements consistent and developmentally-appropriate curriculum and methodologies to meet the needs of all students. Our best practices include: active, hands-on learning across the curriculum, integrated and thematic learning, cooperative learning, authentic assessment, full inclusion, multiple intelligences, school/parent/community links, technology as a learning tool, flexible grouping to meet student needs, and establishing benchmarks for quality work. We work to meet the needs of all students, and provide enriching learning experiences.

AYP

Only groups with greater than 40 students are reported



* English Language Learner

* English Language Learner

% Test Participation (2011-2012)

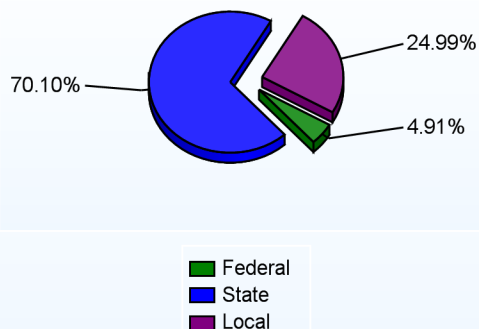
	<u>ELA</u>	<u>Math</u>	<u>ELA Goal</u>	<u>Math Goal</u>
All Students	100	100	95	95
American Indian	*	*	95	95
African American	100	100	95	95
Asian American	*	*	95	95
Hawaiian	*	*	95	95
Hispanic	*	*	95	95
White	100	100	95	95
Multi-Racial	*	*	95	95
English Language Learner	*	*	95	95
Special Education	*	*	95	95
Low Income	*	*	95	95



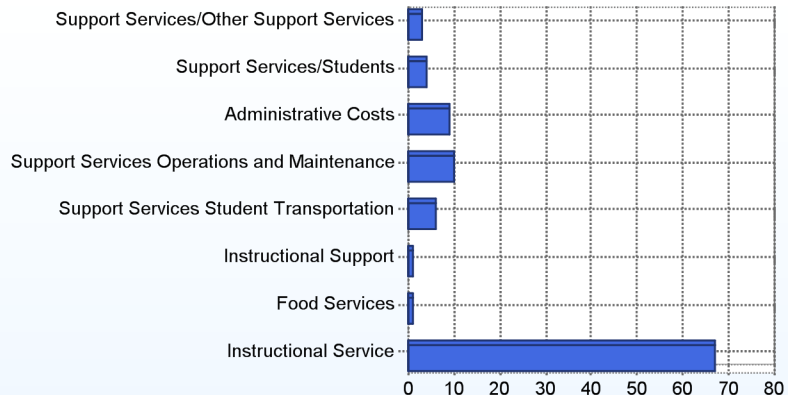
School Finances

District Expenditure per Pupil (2010-2011): \$9,973

District Sources of Revenue (2010-2011)



Percent District Allocation of Current Expenses by Category (2010-2011)



School Salary Allocation

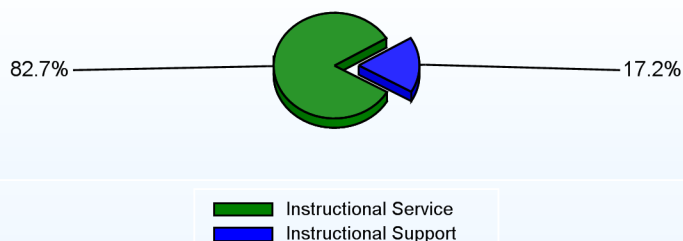
Instructional Service

	2012
Teachers	65.5%
Librarians	1.9%
Instructional Support	7.8%
Pupil Support	7.5%
Total	82.7%

Instructional Support

	2012
Administration	6.2%
Secretaries	3.0%
Food Services	2.8%
Maintenance	5.2%
Total	17.2%

Instructional vs. Support (2011-2012)



For further information and detailed reports, visit

<http://profiles.doe.k12.de.us>

or contact your local school district office.

Glossary: <http://profiles.doe.k12.de.us/glossary.aspx>



Delaware Department of Education

John G. Townsend Building
401 Federal Street, Suite #2
Dover, Delaware, 19901 - 3639
Phone: (302) 735-4000

District: Appoquinimink School District

Telephone: (302) 376-4400

Address: 502 South Broad Street, Middletown DE 19709

Web: www.apposchooldistrict.com/schools/childhood.cfm

Principal: Rene Nolan

AYP: Met

School Demographics

Fall Enrollment		
	2011	2012
Pre-Kindergarten	43	18
Kindergarten	200	192
Total	243	210

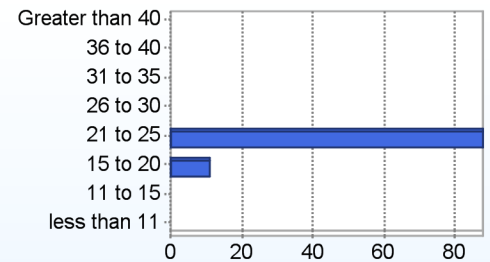
Recently Arrived ELL Students	
	2012
Number of Students Not Tested on ELA Assessment	0

Enrollment by Race/Ethnicity		
	2011	2012
African American	21.8%	24.8%
American Indian		0.5%
Asian	2.9%	1.9%
Hispanic/Latino	5.8%	12.4%
White	61.3%	54.3%
Multi-Racial	8.2%	6.2%

School Promotion by Grade	
	2011
Kindergarten	99.5%

Other Student Characteristics		
	2011	2012
English Language Learner	4.5%	5.7%
Low Income	30.0%	38.0%
Special Education	4.0%	2.6%
Enrolled for Full Year	95.0%	N/A

Class Size (Percentage by Range) (2011-2012)



Exemplary Programs

The Appoquinimink ECC serves a portion of the kindergarten population in the Appoquinimink School District. An inclusive pre-kindergarten program is provided for three and four year old children. The faculty is trained in meeting the specific needs of young children and provide for those needs in a child-centered, nurturing, environment that is filled with a wealth of concrete, open-ended instructional materials. Daily opportunities are provided for the children to choose from a wide range of activities and experiences. Family Fun Reading Nights allow parents to learn ways to help children at home learn to read. Volunteers are a regular part of the day at the center and give of their time to work in the classrooms and serve on various committees. The goal of the center is to provide young children with a foundation that will make all formal education more effective.

Student - School Safety and Discipline

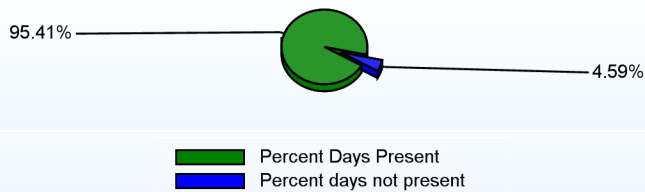
Number of Reported Offenses (2011-2012)

	<u>School</u>	<u>District</u>	<u>State</u>
School Crimes (Title 14, Delaware Code, §4112)		71	957
Department of Education (DOE) Offenses		658	10291
All School Safety Policy in Place	Yes		

Suspensions and Expulsions

	<u>2012</u>
September 30 Enrollment	210
District Percentage	11%
State Percentage	15%

Percent Days Present (2011-2012)



Our Staff

Number of Instructional Staff

	<u>2012</u>
Teachers	14
Pupil Support	5
Total	19

Staff by Race/Ethnicity

	<u>2012</u>
American Indian	0.0%
African American	5.3%
Asian American	0.0%
Hispanic	5.3%
White	89.5%

Staffing Ratios

	<u>2012</u>
Students Per Teacher	15
Students Per Administrator	210
Students Per Instructional Staff	11
Students Per Pupil Support Staff	47
School Staff Per Administrator	30

Staff Qualifications

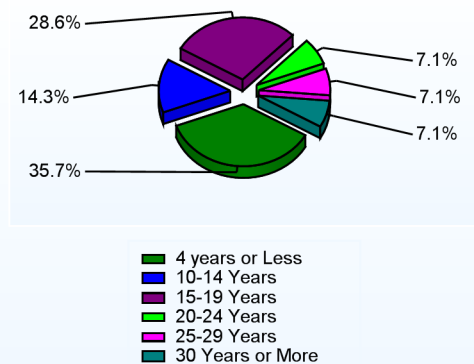
Percentage of Classes Taught by Highly Qualified Teachers (2011-2012)

	<u>Total Classes</u>	<u>% Highly Qualified</u>	<u>% Not Highly Qualified</u>
Arts	2	100.0%	0.0%
Elementary General	9	100.0%	0.0%

Education Level

	<u>2012</u>
Percent with Masters Degree and Above	52.0%

Years of Teaching Experience (2011-2012)



Curriculum Highlights

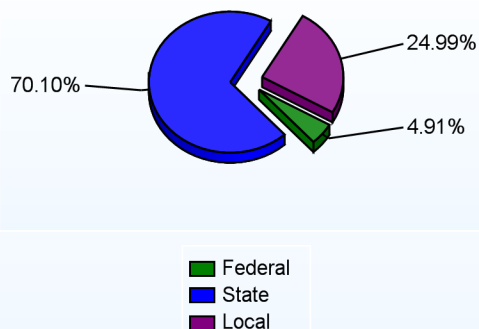
The Appoquinimink Early Childhood Center offers a full-day Kindergarten program. Socialization is an important focus throughout the day as students participate in centers, large and small group activities, lunch, recess and various field trips through the year. Students are provided opportunities in the areas of Reading, Mathematics, Science, Social Studies, Music and Art.



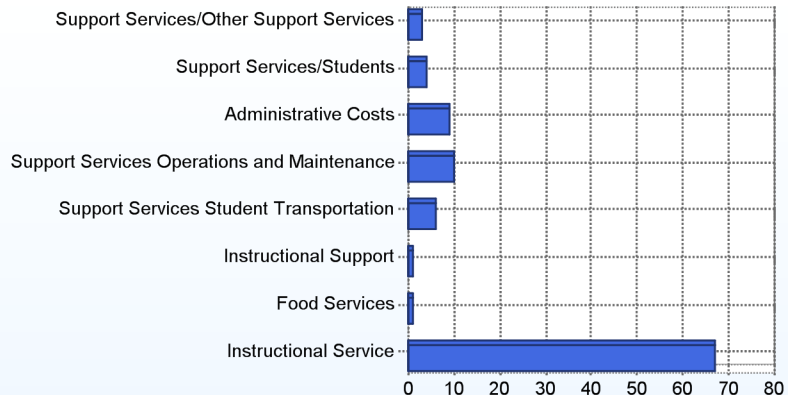
School Finances

District Expenditure per Pupil (2010-2011): \$9,973

District Sources of Revenue (2010-2011)



Percent District Allocation of Current Expenses by Category (2010-2011)



School Salary Allocation

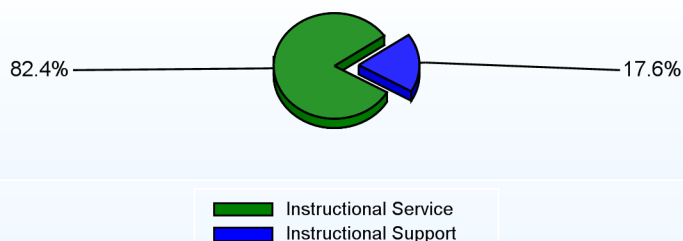
Instructional Service

	2012
Teachers	52.1%
Instructional Support	11.5%
Pupil Support	18.8%
Total	82.4%

Instructional Support

	2012
Administration	6.5%
Secretaries	6.2%
Food Services	2.3%
Maintenance	2.6%
Total	17.6%

Instructional vs. Support (2011-2012)



For further information and detailed reports, visit

<http://profiles.doe.k12.de.us>

or contact your local school district office.

Glossary: <http://profiles.doe.k12.de.us/glossary.aspx>



Delaware Department of Education

John G. Townsend Building
401 Federal Street, Suite #2
Dover, Delaware, 19901 - 3639
Phone: (302) 735-4000

District: Appoquinimink School District

Telephone: (302) 378-5020

Address: PO Box 369, 126 Main Street, Townsend DE 19734

Web: www.townsendthunderbirds.org/

Principal: Don Davis

AYP: Met

School Demographics

Fall Enrollment		
	2011	2012
Grade 1	78	73
Grade 2	83	70
Grade 3	85	89
Grade 4	80	76
Grade 5	74	81
Total	400	389

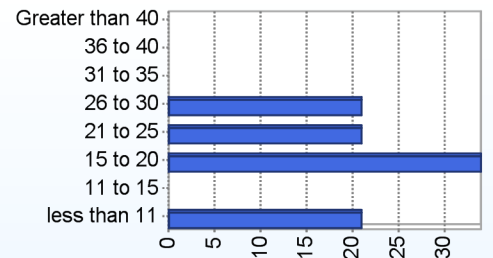
Enrollment by Race/Ethnicity		
	2011	2012
African American	21.8%	20.3%
American Indian	0.3%	0.5%
Asian	1.5%	0.5%
Hispanic/Latino	6.3%	6.2%
White	69.8%	71.0%
Multi-Racial	0.5%	1.5%

Other Student Characteristics		
	2011	2012
English Language Learner	1.0%	1.0%
Low Income	31.8%	32.1%
Special Education	7.5%	9.0%
Enrolled for Full Year	95.0%	N/A

Recently Arrived ELL Students	
	2012
Number of Students Not Tested on ELA Assessment	0

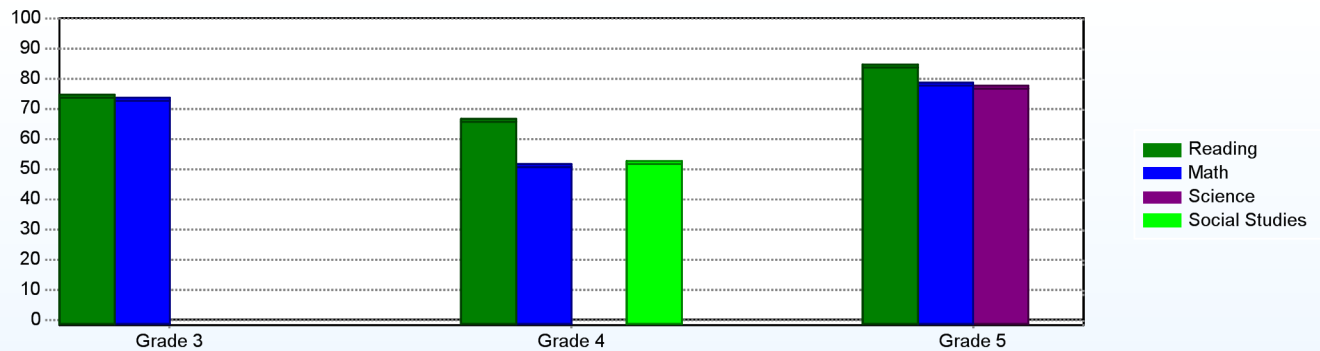
School Promotion by Grade	
	2011
Grade 1	97.4%
Grade 2	100.0%
Grade 3	100.0%
Grade 4	100.0%
Grade 5	100.0%

Class Size (Percentage by Range) (2011-2012)



Student Achievement

Percentage of Students Meeting State Standards (2011-2012)



Exemplary Programs

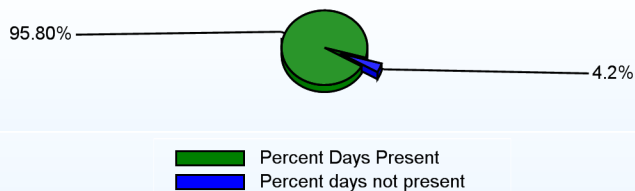
Townsend Elementary School currently offers a School Play, Chorus, Band, and a Strings Program in addition to the core subject areas. We have a strong mentoring program that supports academic as well as social development. A student run newscast each morning keeps students and staff up to date with what is going on in the building. Tessie, our Thunderbird mascot, helps with our strong Positive Behavior Support program that is the backbone of the positive climate at TES. A newly developed Wee-Deliver student mail system will allow students to stay in touch with friends throughout the building while developing their Writing skills.

Student - School Safety and Discipline

Number of Reported Offenses (2011-2012)

	<u>School</u>	<u>District</u>	<u>State</u>
School Crimes (Title 14, Delaware Code, §4112)		71	957
Department of Education (DOE) Offenses	51	658	10291
All School Safety Policy in Place	Yes		

Percent Days Present (2011-2012)



Suspensions and Expulsions

	<u>2012</u>
Number of Suspensions	43
Number of Expulsions	0
Count of Students Suspended/Expelled	30
September 30 Enrollment	389
Percent of Students Suspended/Expelled	8%
District Percentage	11%
State Percentage	15%

Our Staff

Number of Instructional Staff

	<u>2012</u>
Teachers	30
Librarians	1
Pupil Support	6
Total	37

Staff by Race/Ethnicity

	<u>2012</u>
American Indian	0.0%
African American	7.9%
Asian American	0.0%
Hispanic	5.3%
White	86.8%

Staffing Ratios

	<u>2012</u>
Students Per Teacher	13
Students Per Administrator	389
Students Per Instructional Staff	9
Students Per Pupil Support Staff	71
School Staff Per Administrator	59

Staff Qualifications

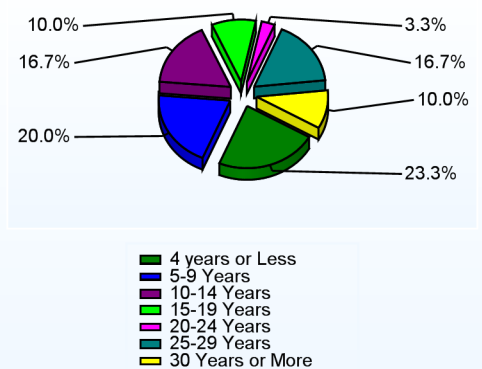
Percentage of Classes Taught by Highly Qualified Teachers (2011-2012)

	<u>Total Classes</u>	<u>% Highly Qualified</u>	<u>% Not Highly Qualified</u>
Reading/ Language Arts	1	100.0%	0.0%
Arts	3	100.0%	0.0%
Foreign Languages	3	100.0%	0.0%
Elementary General	21	100.0%	0.0%

Education Level

	<u>2012</u>
Percent with Masters Degree and Above	44.0%

Years of Teaching Experience (2011-2012)

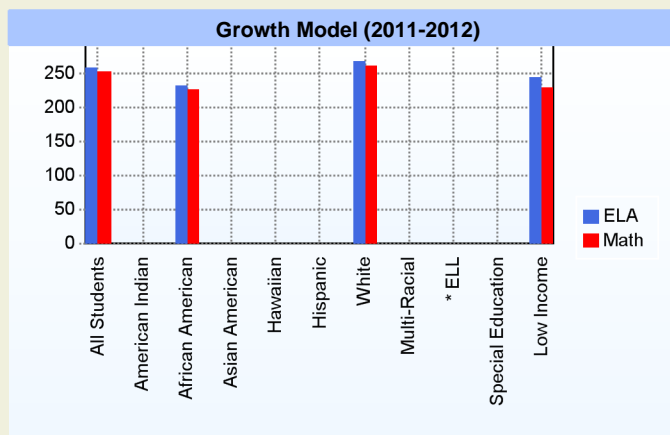
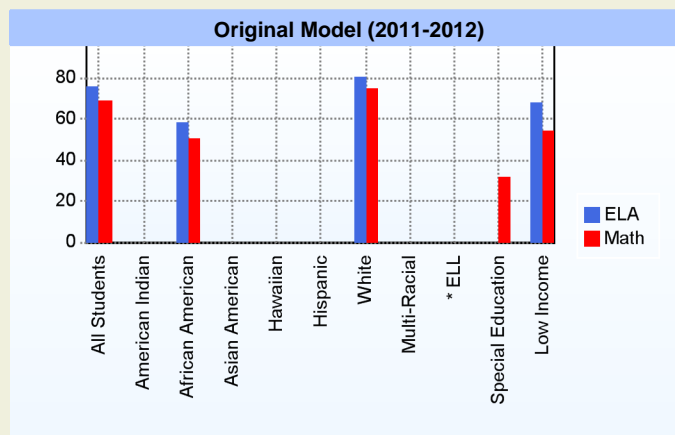


Curriculum Highlights

Our building follows the district-mandated curriculum. Language Arts is taught via the Four Blocks Model that breaks Language Arts down into four distinct blocks. These are Guided Reading, Self Selected Reading, Working With Words, and a Writing Block. The Writing Block follows the Six Traits Writing Model. Critical thinking and math problem solving strategies are taught using TERC materials. The Smithsonian Kits provide students with opportunities to discover and research scientific concepts. For Social Studies, we use a blend of text and supplements to touch on Economics, Geography, History, and Civics. Training in Differentiated Instruction allows our staff to meet the needs of all learners. Talent Development programs allow students to explore talents in areas outside the regular curriculum.

AYP

Only groups with greater than 40 students are reported



* English Language Learner

* English Language Learner

% Test Participation (2011-2012)

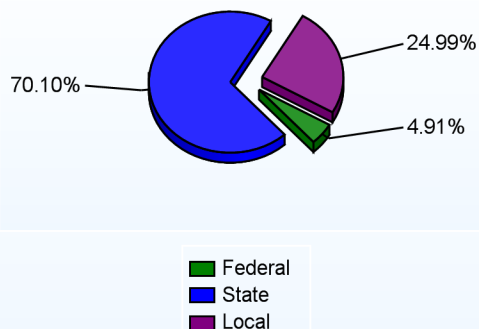
	<u>ELA</u>	<u>Math</u>	<u>ELA Goal</u>	<u>Math Goal</u>
All Students	100	100	95	95
American Indian	*	*	95	95
African American	100	100	95	95
Asian American	*	*	95	95
Hawaiian	*	*	95	95
Hispanic	*	*	95	95
White	100	100	95	95
Multi-Racial	*	*	95	95
English Language Learner	*	*	95	95
Special Education	*	*	95	95
Low Income	100	100	95	95



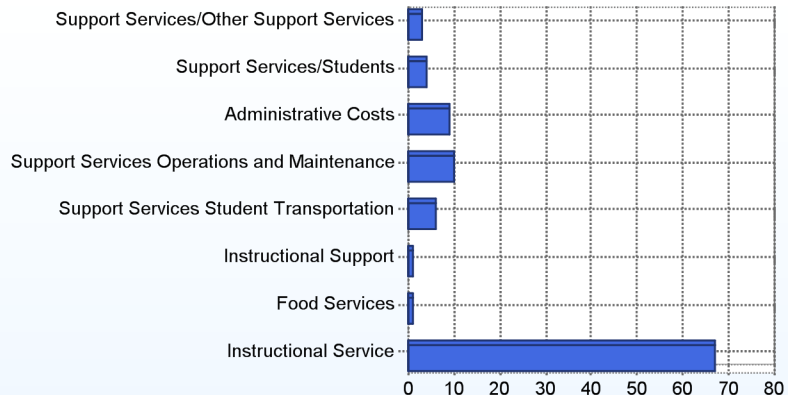
School Finances

District Expenditure per Pupil (2010-2011): \$9,973

District Sources of Revenue (2010-2011)



Percent District Allocation of Current Expenses by Category (2010-2011)



School Salary Allocation

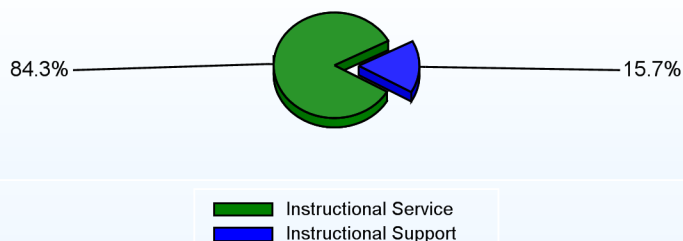
Instructional Service

	2012
Teachers	60.2%
Librarians	2.5%
Instructional Support	12.2%
Pupil Support	9.4%
Total	84.3%

Instructional Support

	2012
Administration	3.9%
Secretaries	3.3%
Food Services	3.0%
Maintenance	5.5%
Total	15.7%

Instructional vs. Support (2011-2012)



For further information and detailed reports, visit

<http://profiles.doe.k12.de.us>

or contact your local school district office.

Glossary: <http://profiles.doe.k12.de.us/glossary.aspx>



Delaware Department of Education

John G. Townsend Building
401 Federal Street, Suite #2
Dover, Delaware, 19901 - 3639
Phone: (302) 735-4000

District: Appoquinimink School District
Address: 201 New Street, Middletown DE 19709
Principal: Chris Beck
AYP: Met

Telephone: (302) 378-5030
Web: www.reddingms.org/

School Demographics

Fall Enrollment		
	2011	2012
Grade 6	243	277
Grade 7	217	237
Grade 8	249	229
Total	709	743

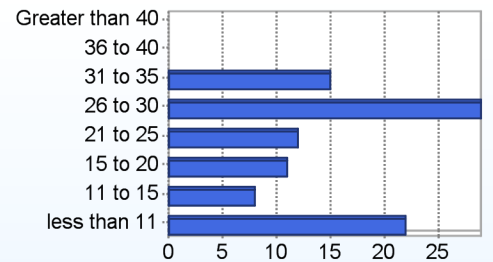
Recently Arrived ELL Students	
	2012
Number of Students Not Tested on ELA Assessment	0

Enrollment by Race/Ethnicity		
	2011	2012
African American	33.6%	33.9%
American Indian		0.1%
Asian	3.7%	3.4%
Hispanic/Latino	5.4%	7.3%
White	56.1%	53.4%
Multi-Racial	1.3%	1.9%

School Promotion by Grade	
	2011
Grade 6	96.3%
Grade 7	95.9%
Grade 8	96.0%

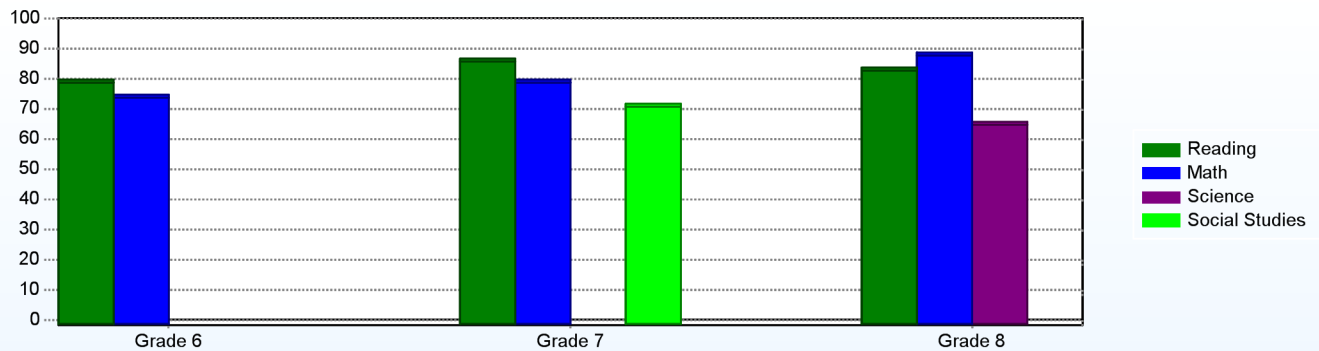
Other Student Characteristics		
	2011	2012
English Language Learner	0.4%	0.5%
Low Income	28.8%	28.9%
Special Education	11.1%	13.1%
Enrolled for Full Year	96.2%	N/A

Class Size (Percentage by Range) (2011-2012)



Student Achievement

Percentage of Students Meeting State Standards (2011-2012)



Exemplary Programs

Students at Redding are provided opportunities that complement daily instruction in the areas of academics, athletics, service, and performing arts. Our drama club performed Willie Wonka Jr. The Student Council provides activities all throughout the year to involve students in the school and community. The after school Academic Academy provides a safe and supportive environment for students to work with parent volunteers, teachers, and other students four days a week. The music program includes an after school jazz band that enables the students to excel musically. After school opportunities include intramurals, Science Olympiad, BPA, Odyssey of the Mind, Talent Development, National Junior Honor Society, drama club, FFA, computer club, Redding Idol stage crew and various other programs.

Student - School Safety and Discipline

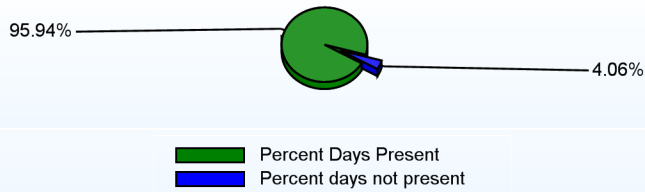
Number of Reported Offenses (2011-2012)

	<u>School</u>	<u>District</u>	<u>State</u>
School Crimes (Title 14, Delaware Code, §4112)	11	71	957
Department of Education (DOE) Offenses	133	658	10291
All School Safety Policy in Place	Yes		

Suspensions and Expulsions

	<u>2012</u>
Number of Suspensions	482
Number of Expulsions	3
Count of Students Suspended/Expelled	131
September 30 Enrollment	743
Percent of Students Suspended/Expelled	18%
District Percentage	11%
State Percentage	15%

Percent Days Present (2011-2012)



Our Staff

Number of Instructional Staff

	<u>2012</u>
Teachers	51
Librarians	1
Pupil Support	4
Total	56

Staff by Race/Ethnicity

	<u>2012</u>
American Indian	0.0%
African American	12.5%
Asian American	0.0%
Hispanic	0.0%
White	87.5%

Staffing Ratios

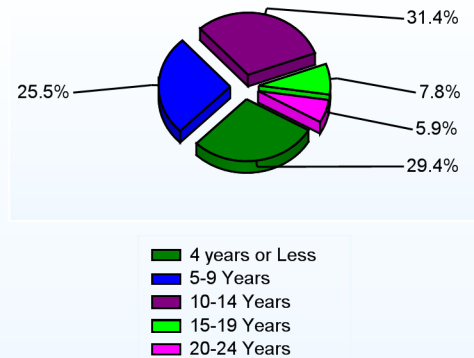
	<u>2012</u>
Students Per Teacher	15
Students Per Administrator	372
Students Per Instructional Staff	13
Students Per Pupil Support Staff	186
School Staff Per Administrator	37

Staff Qualifications

Percentage of Classes Taught by Highly Qualified Teachers (2011-2012)

	<u>Total Classes</u>	<u>% Highly Qualified</u>	<u>% Not Highly Qualified</u>
Reading/ Language Arts	29	100.0%	0.0%
Arts	52	100.0%	0.0%
Foreign Languages	60	100.0%	0.0%
Science	28	96.4%	3.6%
Mathematics	28	100.0%	0.0%
Social Studies	28	92.9%	7.1%

Years of Teaching Experience (2011-2012)



Education Level

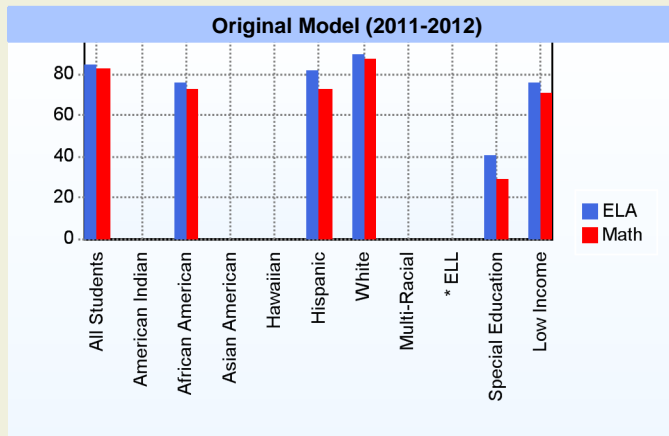
	<u>2012</u>
Percent with Masters Degree and Above	50.0%

Curriculum Highlights

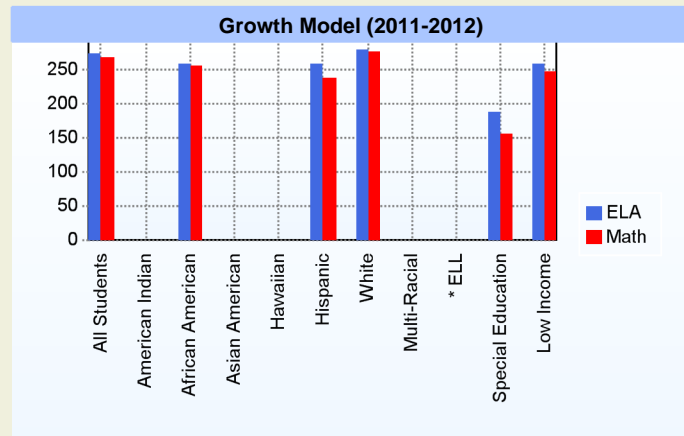
The language arts program helps students to develop and practice literacy strategies. Redding students stress reading and writing. Reading programs start with summer reading and continuing with the Accelerated Reader program. We approach writing using a variety of tools and techniques to help students communicate. The math curriculum supports the Delaware State Standards. Real-life situations act as starting points. Problem-solving and critical thinking strategies are developed, compared and analyzed. Ideas are spiraled and advanced through the curriculum, enhancing mastery. The science rooms are places for our students to observe, experiment, and to think critically and qualitatively. The Social Studies curriculum starts in sixth grade with historical societies and their relationships and influence on the world. As eighth graders, they focus on United States history that stresses the social, economic, and political evolution.

AYP

Only groups with greater than 40 students are reported



* English Language Learner



* English Language Learner

% Test Participation (2011-2012)

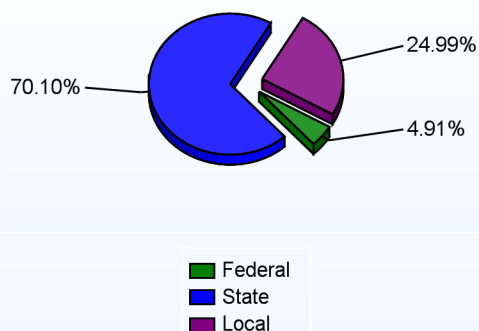
	ELA	Math	ELA Goal	Math Goal
All Students	100	100	95	95
American Indian	*	*	95	95
African American	100	100	95	95
Asian American	*	*	95	95
Hawaiian	*	*	95	95
Hispanic	100	100	95	95
White	100	100	95	95
Multi-Racial	*	*	95	95
English Language Learner	*	*	95	95
Special Education	100	100	95	95
Low Income	100	100	95	95



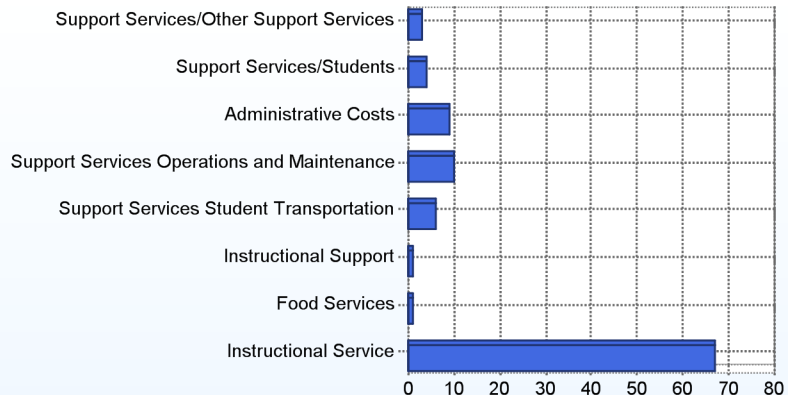
School Finances

District Expenditure per Pupil (2010-2011): \$9,973

District Sources of Revenue (2010-2011)



Percent District Allocation of Current Expenses by Category (2010-2011)



School Salary Allocation

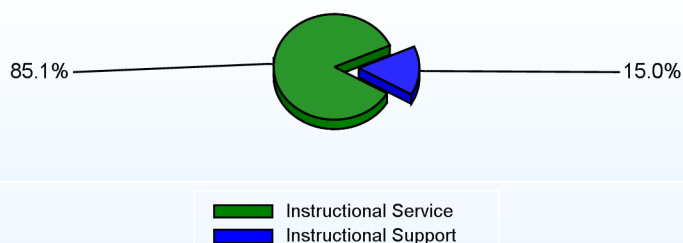
Instructional Service

	2012
Teachers	71.7%
Librarians	1.7%
Instructional Support	5.3%
Pupil Support	6.4%
Total	85.1%

Instructional Support

	2012
Administration	5.3%
Secretaries	2.4%
Food Services	2.7%
Maintenance	4.6%
Total	15.0%

Instructional vs. Support (2011-2012)



For further information and detailed reports, visit

<http://profiles.doe.k12.de.us>

or contact your local school district office.

Glossary: <http://profiles.doe.k12.de.us/glossary.aspx>



Delaware Department of Education

John G. Townsend Building
401 Federal Street, Suite #2
Dover, Delaware, 19901 - 3639
Phone: (302) 735-4000

District: Appoquinimink School District

Telephone: (302) 378-5001

Address: 504 South Broad Street, Middletown DE 19709

Web: www.meredithmiddle.org/

Principal: T.J. Vari

AYP: Met

School Demographics

Fall Enrollment		
	2011	2012
Grade 6	240	209
Grade 7	221	260
Grade 8	182	212
Total	643	681

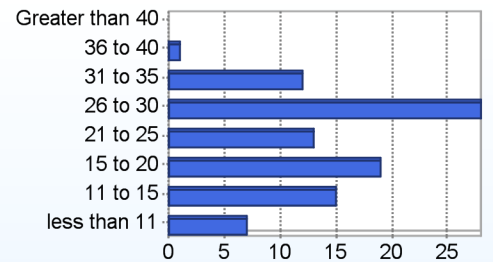
Recently Arrived ELL Students	
	2012
Number of Students Not Tested on ELA Assessment	0

Enrollment by Race/Ethnicity		
	2011	2012
African American	33.9%	32.7%
American Indian	0.3%	0.3%
Asian	1.9%	1.0%
Hispanic/Latino	6.4%	7.5%
White	56.6%	57.1%
Multi-Racial	0.9%	1.3%

School Promotion by Grade	
	2011
Grade 6	98.3%
Grade 7	94.1%
Grade 8	100.0%

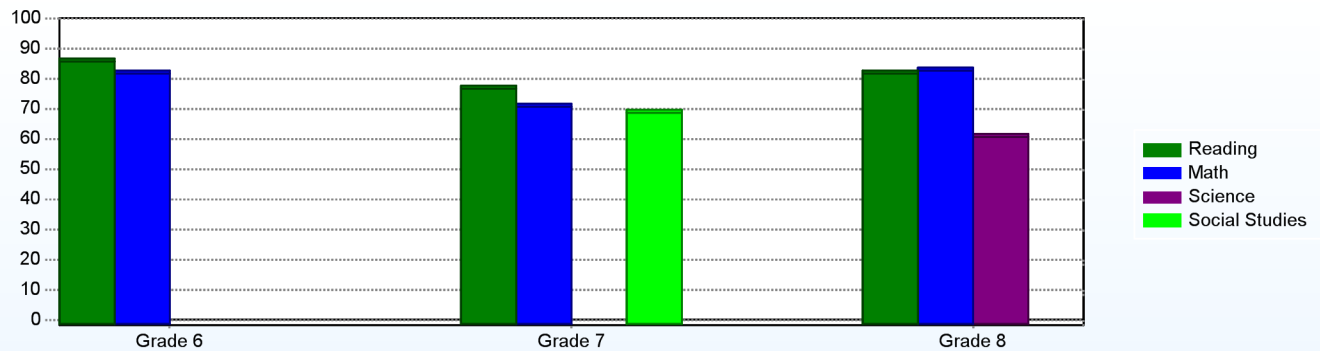
Other Student Characteristics		
	2011	2012
English Language Learner	1.4%	0.4%
Low Income	28.8%	28.8%
Special Education	11.2%	11.9%
Enrolled for Full Year	96.6%	N/A

Class Size (Percentage by Range) (2011-2012)



Student Achievement

Percentage of Students Meeting State Standards (2011-2012)



Exemplary Programs

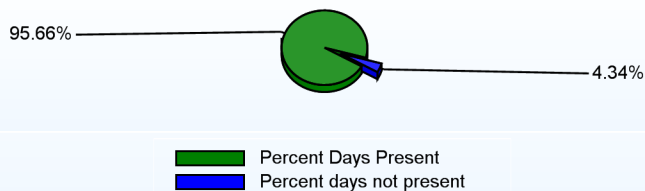
The National Junior Honor Society recognizes scholarship, leadership, character, and service. The Business Professionals of America affords students the opportunity to learn business principles in real-life settings. The Peer Leadership Program trains individuals to lead and support others academically and socially. The Website Design Team introduces the school and community to a wealth of information on the "super highway." The State acknowledges the Student Council for its leadership and achievement and the FFA as one of the top agriscience programs in the region. The Intervention Department creates programs to develop social-emotional skills, prevent negative behavior, and resolve conflicts.

Student - School Safety and Discipline

Number of Reported Offenses (2011-2012)

	<u>School</u>	<u>District</u>	<u>State</u>
School Crimes (Title 14, Delaware Code, §4112)	7	71	957
Department of Education (DOE) Offenses	176	658	10291
All School Safety Policy in Place	Yes		

Percent Days Present (2011-2012)



Suspensions and Expulsions

	<u>2012</u>
Number of Suspensions	249
Number of Expulsions	1
Count of Students Suspended/Expelled	103
September 30 Enrollment	681
Percent of Students Suspended/Expelled	15%
District Percentage	11%
State Percentage	15%

Our Staff

Number of Instructional Staff

	<u>2012</u>
Teachers	42
Librarians	1
Pupil Support	3
Total	46

Staff by Race/Ethnicity

	<u>2012</u>
American Indian	0.0%
African American	2.2%
Asian American	0.0%
Hispanic	6.5%
White	91.3%

Staffing Ratios

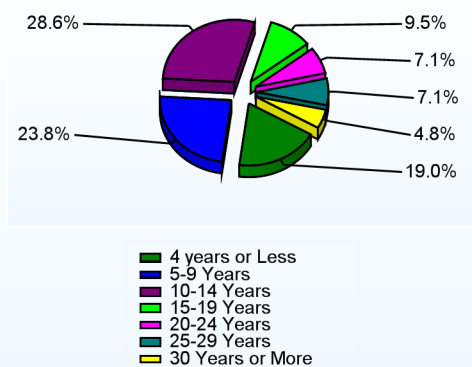
	<u>2012</u>
Students Per Teacher	16
Students Per Administrator	341
Students Per Instructional Staff	15
Students Per Pupil Support Staff	227
School Staff Per Administrator	33

Staff Qualifications

Percentage of Classes Taught by Highly Qualified Teachers (2011-2012)

	<u>Total Classes</u>	<u>% Highly Qualified</u>	<u>% Not Highly Qualified</u>
Reading/ Language Arts	34	100.0%	0.0%
Arts	33	100.0%	0.0%
Foreign Languages	52	88.5%	11.5%
Science	30	100.0%	0.0%
Mathematics	34	94.1%	5.9%
Social Studies	30	86.7%	13.3%

Years of Teaching Experience (2011-2012)



Education Level

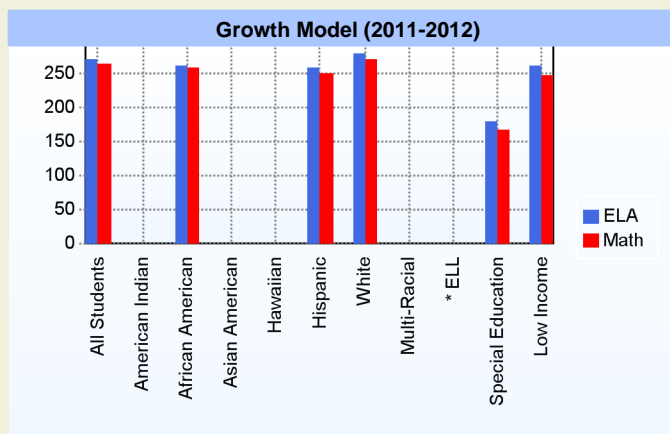
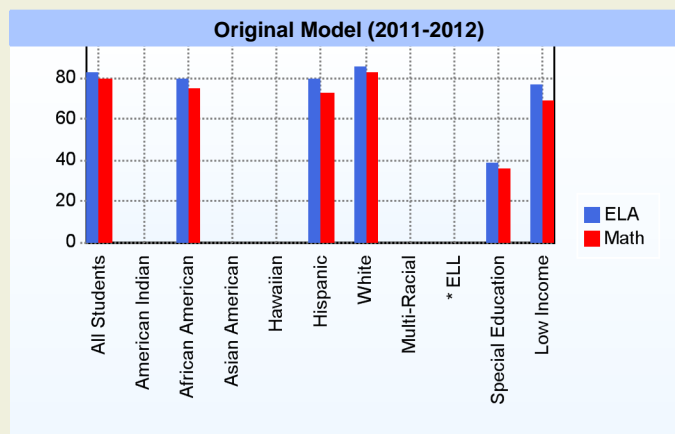
	<u>2012</u>
Percent with Masters Degree and Above	50.0%

Curriculum Highlights

Regular and accelerated standards-based Mathematics courses stress modeling, Problem-Solving, Critical thinking, and Cooperative learning. An interdisciplinary, connected curriculum stresses Reading, Writing, and communication in the real world. Special academic and behavioral programs are in place.

AYP

Only groups with greater than 40 students are reported



* English Language Learner

* English Language Learner

% Test Participation (2011-2012)

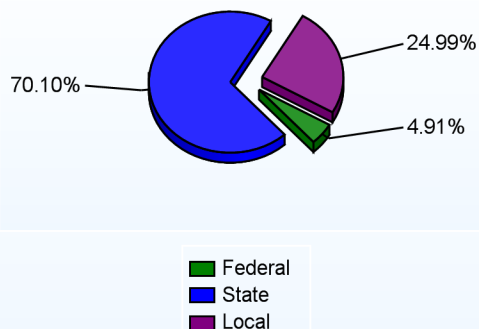
	<u>ELA</u>	<u>Math</u>	<u>ELA Goal</u>	<u>Math Goal</u>
All Students	100	100	95	95
American Indian	*	*	95	95
African American	100	100	95	95
Asian American	*	*	95	95
Hawaiian	*	*	95	95
Hispanic	100	100	95	95
White	100	100	95	95
Multi-Racial	*	*	95	95
English Language Learner	*	*	95	95
Special Education	100	100	95	95
Low Income	100	100	95	95



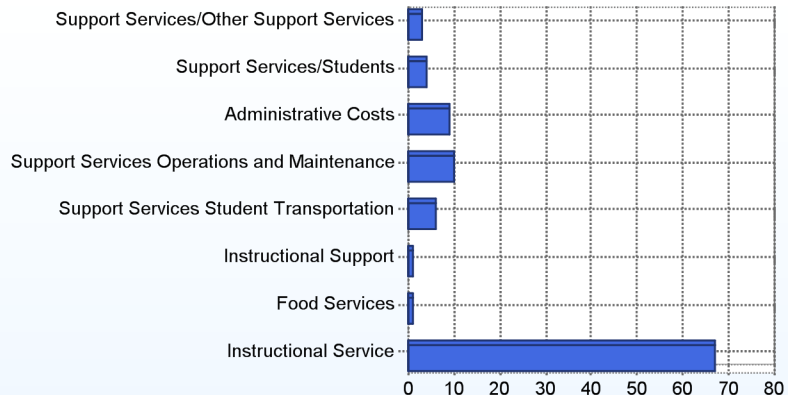
School Finances

District Expenditure per Pupil (2010-2011): \$9,973

District Sources of Revenue (2010-2011)



Percent District Allocation of Current Expenses by Category (2010-2011)



School Salary Allocation

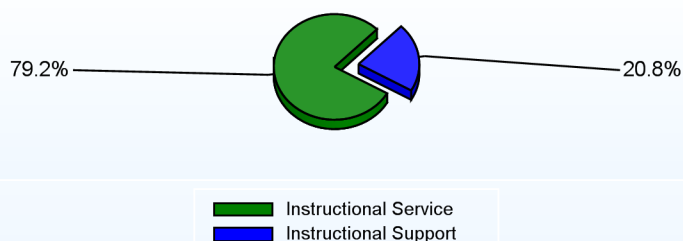
Instructional Service

	2012
Teachers	68.7%
Librarians	1.4%
Instructional Support	3.9%
Pupil Support	5.2%
Total	79.2%

Instructional Support

	2012
Administration	5.8%
Secretaries	2.9%
Food Services	2.4%
Maintenance	9.7%
Total	20.8%

Instructional vs. Support (2011-2012)



For further information and detailed reports, visit

<http://profiles.doe.k12.de.us>

or contact your local school district office.

Glossary: <http://profiles.doe.k12.de.us/glossary.aspx>



Delaware Department of Education

John G. Townsend Building
401 Federal Street, Suite #2
Dover, Delaware, 19901 - 3639
Phone: (302) 735-4000

District: Appoquinimink School District
Address: 120 Silver Lake Road, Middletown DE 19709
Principal: Matthew Donovan
AYP: Met

Telephone: (302) 376-4141
Web: www.middletownhs.org/

School Demographics

Fall Enrollment		
	2011	2012
Grade 9	334	340
Grade 10	314	328
Grade 11	270	257
Grade 12	275	239
Total	1193	1164

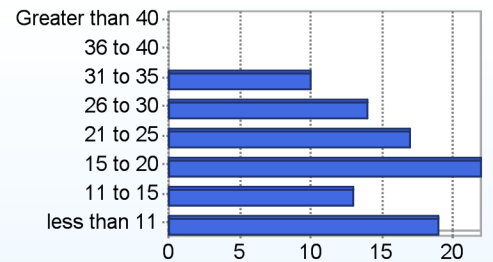
Enrollment by Race/Ethnicity		
	2011	2012
African American	25.6%	28.4%
American Indian	0.3%	0.3%
Asian	3.4%	3.9%
Hispanic/Latino	6.2%	5.7%
White	63.3%	60.4%
Multi-Racial	1.2%	1.4%

Other Student Characteristics		
	2011	2012
English Language Learner	0.9%	0.5%
Low Income	18.4%	19.1%
Special Education	7.4%	7.5%
Enrolled for Full Year	95.0%	N/A

Recently Arrived ELL Students	
	2012
Number of Students Not Tested on ELA Assessment	0

School Promotion by Grade	
	2011
Grade 9	87.4%
Grade 10	85.0%
Grade 11	93.0%
Grade 12	99.3%

Class Size (Percentage by Range) (2011-2012)

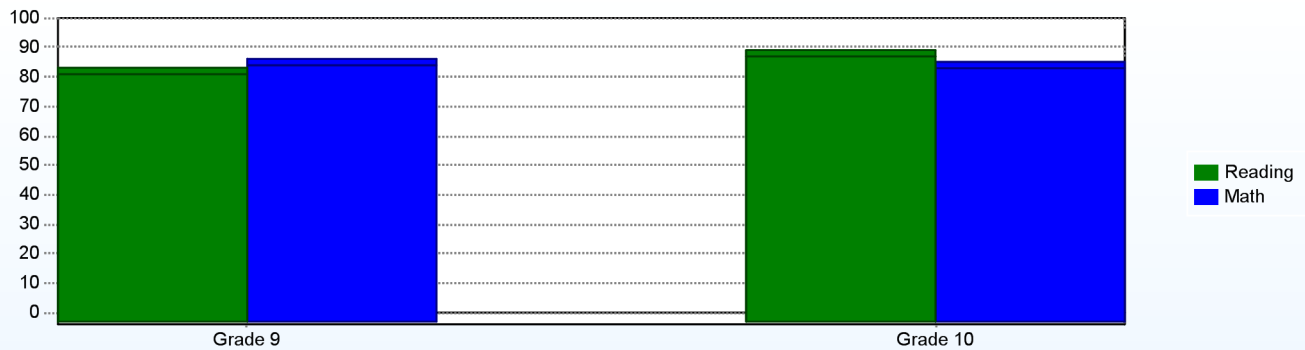


Student Achievement

Advanced Placement (AP) (2010-2011)	
	2011
Advanced Placement Courses	19
No. of Students Enrolled	169
No. of Exams Taken	178
Total No. of Exams Passed	143

Public School SAT Reasoning Test (Average Score) (2010-2011)				
	School	District	State	National
Math	493	493	477	514
Critical Reading	489	488	472	497
Writing	478	477	457	489
Total	1,460	1,458	1,406	1,500

Percentage of Students Meeting State Standards (2011-2012)



Exemplary Programs

MHS, in partnership with College Board, provides opportunities to earn college credits in 18 rigorous course offerings. MHS offers students the following classes: Art History, Biology, Calculus AB, Chemistry, Computer Science A and AB, English Language and Comp., English Literature and Comp., Environmental Science, Government and Political Science-US, Microeconomics, Music Theory, Physics B, Psychology, Spanish Language, Statistics, Studio Art, United States History and World History. MHS is committed to providing these opportunities to all students who are interested in pursuing these courses. We are very proud of the steady improvement in our advanced placement calculus, statistics, chemistry, biology, psychology, English, U.S. History, and Humanities programs.

Student - School Safety and Discipline

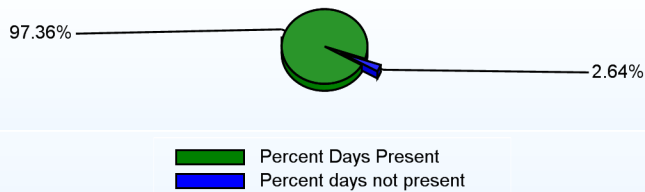
Number of Reported Offenses (2011-2012)

	<u>School</u>	<u>District</u>	<u>State</u>
School Crimes (Title 14, Delaware Code, §4112)	25	71	957
Department of Education (DOE) Offenses	64	658	10291
All School Safety Policy in Place	Yes		

Suspensions and Expulsions

	<u>2012</u>
Number of Suspensions	364
Number of Expulsions	3
Count of Students Suspended/Expelled	162
September 30 Enrollment	1164
Percent of Students Suspended/Expelled	14%
District Percentage	11%
State Percentage	15%

Percent Days Present (2011-2012)



Our Staff

Number of Instructional Staff

	<u>2012</u>
Teachers	77
Librarians	1
Pupil Support	7
Total	85

Staff by Race/Ethnicity

	<u>2012</u>
American Indian	2.4%
African American	8.2%
Asian American	2.4%
Hispanic	0.0%
White	87.1%

Staffing Ratios

	<u>2012</u>
Students Per Teacher	15
Students Per Administrator	291
Students Per Instructional Staff	13
Students Per Pupil Support Staff	166
School Staff Per Administrator	32

Staff Qualifications

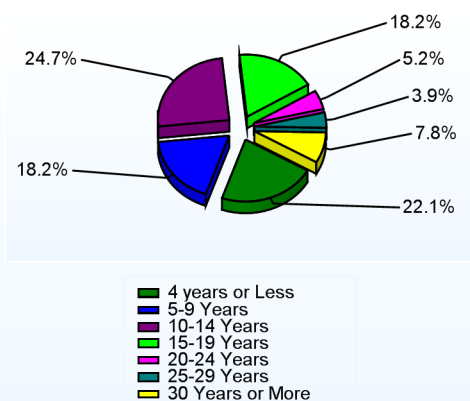
Percentage of Classes Taught by Highly Qualified Teachers (2011-2012)

	<u>Total Classes</u>	<u>% Highly Qualified</u>	<u>% Not Highly Qualified</u>
English	54	100.0%	0.0%
Arts	19	100.0%	0.0%
Foreign Languages	53	100.0%	0.0%
Science	52	100.0%	0.0%
Mathematics	57	100.0%	0.0%
Social Studies	47	100.0%	0.0%
History	4	100.0%	0.0%

Education Level

	<u>2012</u>
Percent with Masters Degree and Above	61.2%

Years of Teaching Experience (2011-2012)



Curriculum Highlights

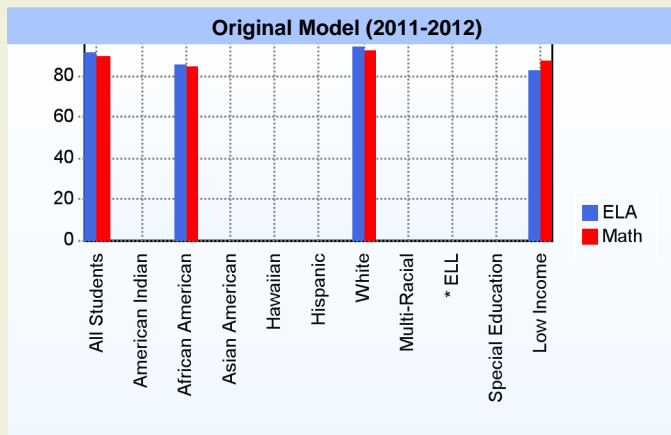
The MHS Creative and Performing Arts Department provides a wide variety of educational opportunities. The spring musical, Hairspray, featured over 100 students who sang and danced to sell-out crowds. The Cavalier Marching Band obtained its highest competition scores in its history and performed its final show in Disneyworld. A new addition to the choral program was the "Manchoir", a chorus comprised of middle and high school young men. The FCCLA programs have blossomed with the new professional culinary arts kitchen and numerous community service projects sponsored by the Students in the Human and Child Development. Operated by students with teacher oversight, Cavalier Bank powered by M & T and Wilmington Trust, represents a unique opportunity for teens to explore the fundamentals of banking, money management, and the financial industry. The MHS AFJR ROTC unit received a rating of "Exceeds Standards" on its Head Quarters Inspection for the second year.

Graduation Rate - ESEA 4 Year Adjusted

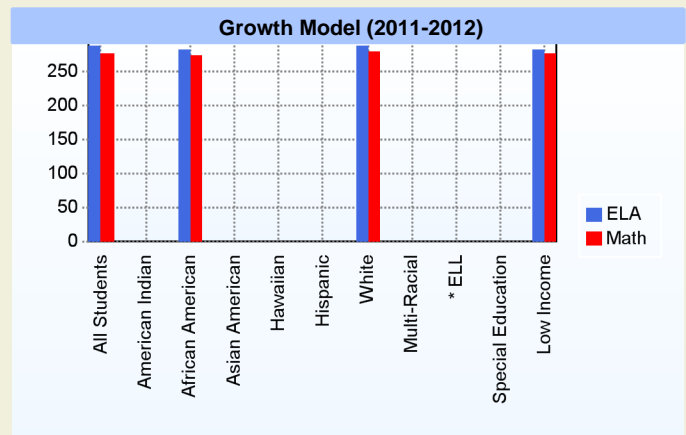
	2010	2011
	<u>ESEA</u>	<u>ESEA</u>
All Students	83.1%	85.4%
American Indian	100.0%	100.0%
African American	81.7%	84.9%
Asian American	88.2%	81.8%
Hispanic	60.9%	79.2%
White	84.6%	86.2%
Multi-Racial		100.0%
English Language Learner	50.0%	75.0%
Special Education	64.3%	39.4%
Low Income	66.0%	71.1%

AYP

Only groups with greater than 40 students are reported



* English Language Learner



* English Language Learner

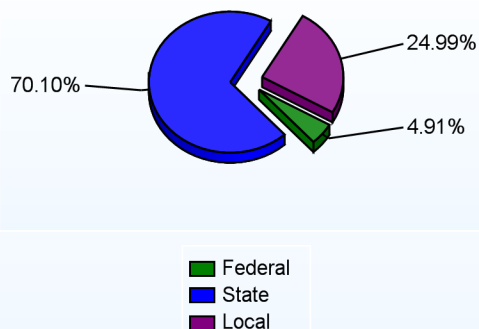
% Test Participation (2011-2012)

	<u>ELA</u>	<u>Math</u>	<u>ELA Goal</u>	<u>Math Goal</u>
All Students	100	100	95	95
American Indian	*	*	95	95
African American	100	100	95	95
Asian American	*	*	95	95
Hawaiian	*	*	95	95
Hispanic	*	*	95	95
White	100	100	95	95
Multi-Racial	*	*	95	95
English Language Learner	*	*	95	95
Special Education	*	*	95	95
Low Income	100	100	95	95

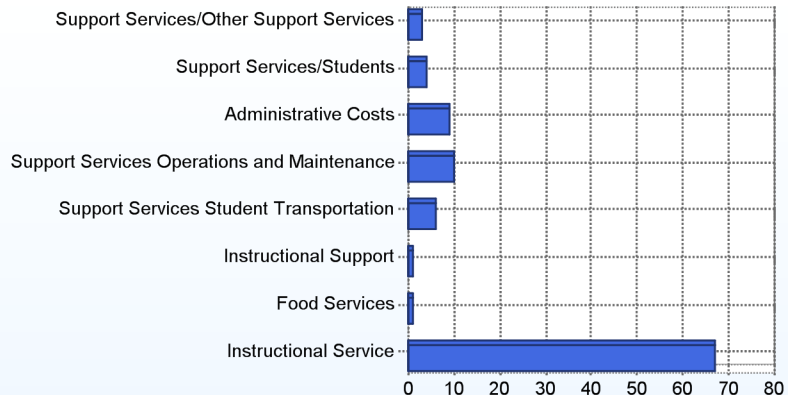
School Finances

District Expenditure per Pupil (2010-2011): \$9,973

District Sources of Revenue (2010-2011)



Percent District Allocation of Current Expenses by Category (2010-2011)



School Salary Allocation

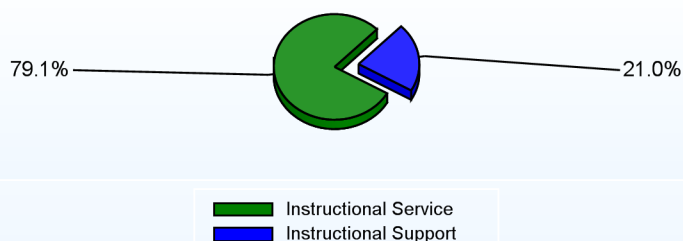
Instructional Service

	2012
Teachers	66.1%
Librarians	1.0%
Instructional Support	5.8%
Pupil Support	6.2%
Total	79.1%

Instructional Support

	2012
Administration	6.2%
Secretaries	3.4%
Food Services	2.4%
Maintenance	7.1%
Not Classified	1.9%
Total	21.0%

Instructional vs. Support (2011-2012)



For further information and detailed reports, visit

<http://profiles.doe.k12.de.us>

or contact your local school district office.

Glossary: <http://profiles.doe.k12.de.us/glossary.aspx>



Delaware Department of Education

John G. Townsend Building
401 Federal Street, Suite #2
Dover, Delaware, 19901 - 3639
Phone: (302) 735-4000

Loss (Olive B.) Elementary School (School Year 2011-12)

Page 1 of 4

District: Appoquinimink School District
Address: 200 Brennan Boulevard, Bear DE 19701
Principal: Lorraine Lybarger
AYP: Met

Telephone: (302) 832-1343

Web: www.olivebloss.org/

School Demographics

Fall Enrollment		
	2011	2012
Grade 1	151	128
Grade 2	139	150
Grade 3	116	136
Grade 4	161	120
Grade 5	125	163
Total	692	697

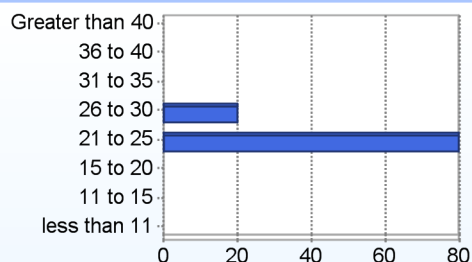
Enrollment by Race/Ethnicity		
	2011	2012
African American	17.3%	15.8%
American Indian	0.6%	0.3%
Asian	13.4%	15.1%
Hispanic/Latino	2.6%	4.2%
White	63.4%	63.1%
Multi-Racial	2.6%	1.6%

Other Student Characteristics		
	2011	2012
English Language Learner	1.6%	1.7%
Low Income	10.3%	10.2%
Special Education	5.2%	5.3%
Enrolled for Full Year	99.1%	N/A

Recently Arrived ELL Students	
	2012
Number of Students Not Tested on ELA Assessment	0

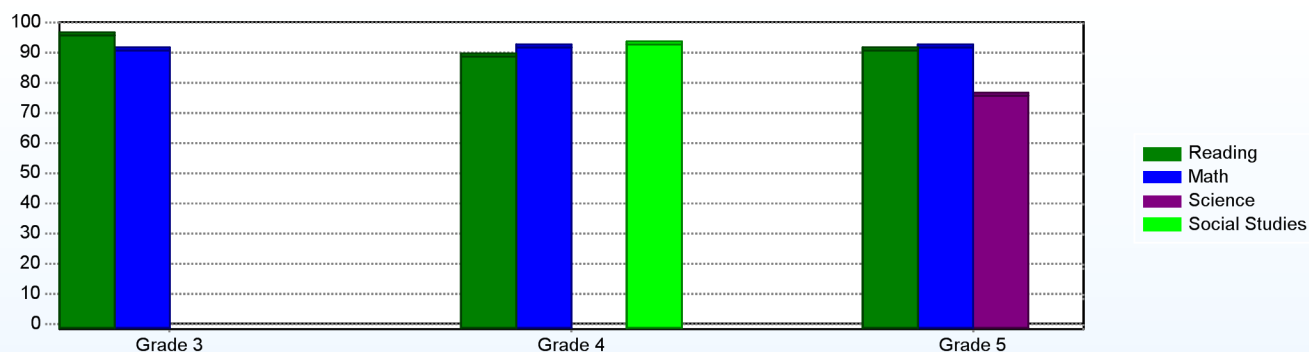
School Promotion by Grade	
	2011
Grade 1	97.4%
Grade 2	98.6%
Grade 3	99.1%
Grade 4	100.0%
Grade 5	100.0%

Class Size (Percentage by Range) (2011-2012)



Student Achievement

Percentage of Students Meeting State Standards (2011-2012)



Exemplary Programs

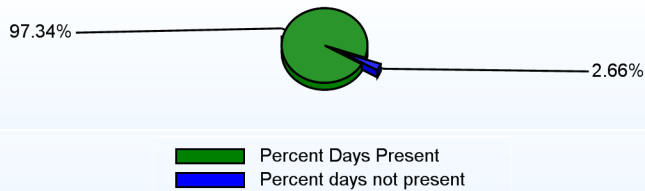
Academic excellence in all curricular areas is the goal of Olive B. Loss School. Our Language Arts program is research based and incorporates the Four Blocks Model. Our classrooms provide literature rich environments in which reading is modeled and enjoyed on a daily basis. The school wide Accelerated Reader program affords students the opportunity to read a large variety of fiction and nonfiction at their independent reading level. Beginning in first grade, emphasis is placed on writing daily. Skills for writing across the curriculum are developed and refined through the Six Traits Analytical Assessment Model. Critical thinking and math problem solving strategies are taught using TERC materials. The Smithsonian Kits provide students with opportunities to discover and research scientific concepts. Training in Differentiated Instruction equips our staff with techniques and skills to meet the needs of all students including the gifted/talented and special needs students.

Student - School Safety and Discipline

Number of Reported Offenses (2011-2012)

	<u>School</u>	<u>District</u>	<u>State</u>
School Crimes (Title 14, Delaware Code, §4112)		71	957
Department of Education (DOE) Offenses	9	658	10291
All School Safety Policy in Place	Yes		

Percent Days Present (2011-2012)



Suspensions and Expulsions

	<u>2012</u>
Number of Suspensions	11
Number of Expulsions	0
Count of Students Suspended/Expelled	8
September 30 Enrollment	697
Percent of Students Suspended/Expelled	1%
District Percentage	11%
State Percentage	15%

Our Staff

Number of Instructional Staff

	<u>2012</u>
Teachers	39
Pupil Support	3
Total	42

Staff by Race/Ethnicity

	<u>2012</u>
American Indian	0.0%
African American	2.3%
Asian American	0.0%
Hispanic	2.3%
White	95.5%

Staffing Ratios

	<u>2012</u>
Students Per Teacher	18
Students Per Administrator	349
Students Per Instructional Staff	16
Students Per Pupil Support Staff	279
School Staff Per Administrator	29

Staff Qualifications

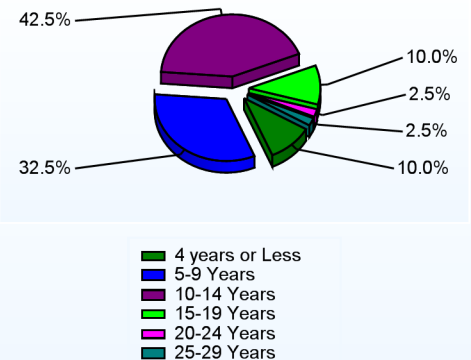
Percentage of Classes Taught by Highly Qualified Teachers (2011-2012)

	<u>Total Classes</u>	<u>% Highly Qualified</u>	<u>% Not Highly Qualified</u>
Arts	3	100.0%	0.0%
Foreign Languages	3	100.0%	0.0%
Elementary General	30	100.0%	0.0%

Education Level

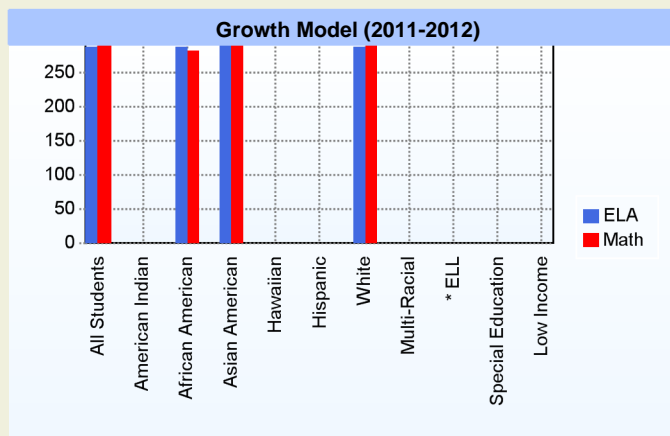
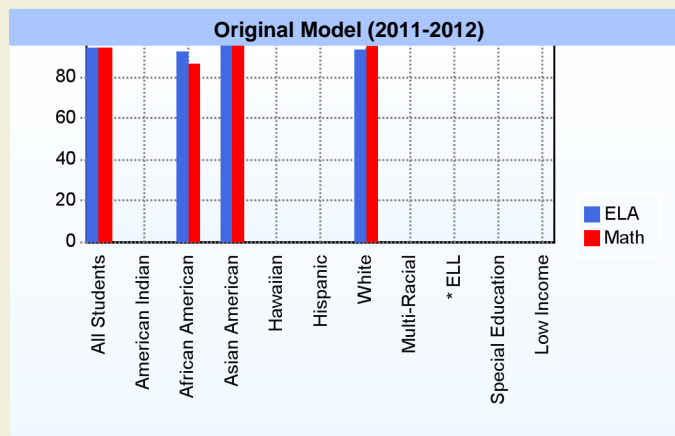
	<u>2012</u>
Percent with Masters Degree and Above	55.1%

Years of Teaching Experience (2011-2012)



AYP

Only groups with greater than 40 students are reported



* English Language Learner

* English Language Learner

% Test Participation (2011-2012)

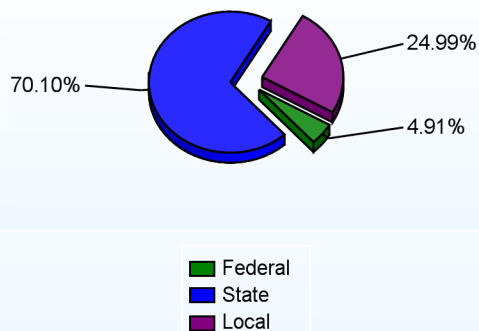
	<u>ELA</u>	<u>Math</u>	<u>ELA Goal</u>	<u>Math Goal</u>
All Students	100	100	95	95
American Indian	*	*	95	95
African American	100	100	95	95
Asian American	100	100	95	95
Hawaiian	*	*	95	95
Hispanic	*	*	95	95
White	100	100	95	95
Multi-Racial	*	*	95	95
English Language Learner	*	*	95	95
Special Education	*	*	95	95
Low Income	*	*	95	95



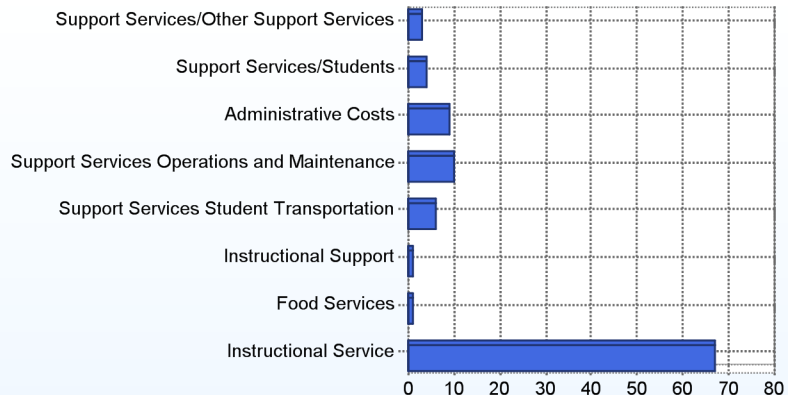
School Finances

District Expenditure per Pupil (2010-2011): \$9,973

District Sources of Revenue (2010-2011)



Percent District Allocation of Current Expenses by Category (2010-2011)



School Salary Allocation

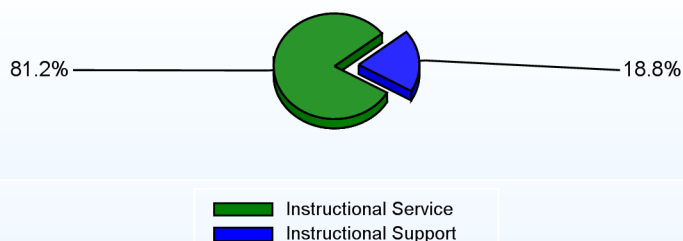
Instructional Service

	2012
Teachers	74.5%
Instructional Support	3.0%
Pupil Support	3.7%
Total	81.2%

Instructional Support

	2012
Administration	6.8%
Secretaries	3.0%
Food Services	3.5%
Maintenance	5.5%
Total	18.8%

Instructional vs. Support (2011-2012)



For further information and detailed reports, visit

<http://profiles.doe.k12.de.us>

or contact your local school district office.

Glossary: <http://profiles.doe.k12.de.us/glossary.aspx>



Delaware Department of Education

John G. Townsend Building
401 Federal Street, Suite #2
Dover, Delaware, 19901 - 3639
Phone: (302) 735-4000

District: Appoquinimink School District
Address: 378 Brick Mill Road, Middletown DE 19709
Principal: Rebecca Feathers
AYP: Met

Telephone: (302) 378-5288
Web: www.brickmilldolphins.org/

School Demographics

Fall Enrollment		
	2011	2012
Grade 1	136	137
Grade 2	151	137
Grade 3	175	148
Grade 4	146	168
Grade 5	142	151
Total	750	741

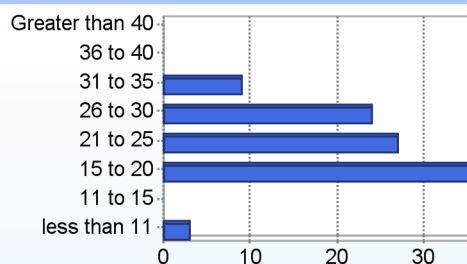
Enrollment by Race/Ethnicity		
	2011	2012
African American	28.7%	26.0%
American Indian		0.1%
Asian	4.8%	5.0%
Hawaiian		0.1%
Hispanic/Latino	6.4%	6.6%
White	57.5%	58.6%
Multi-Racial	2.7%	3.5%

Other Student Characteristics		
	2011	2012
English Language Learner	2.5%	2.3%
Low Income	25.3%	25.6%
Special Education	6.9%	8.4%
Enrolled for Full Year	98.4%	N/A

Recently Arrived ELL Students	
	2012
Number of Students Not Tested on ELA Assessment	0

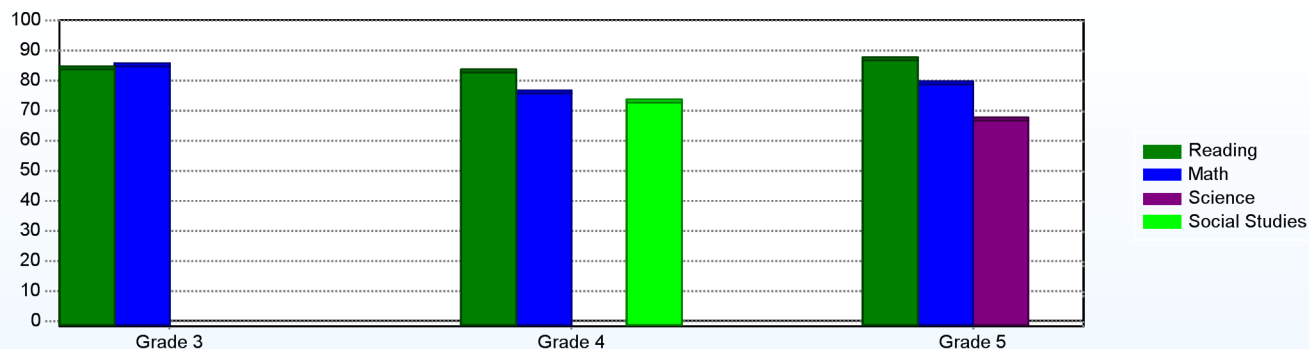
School Promotion by Grade	
	2011
Grade 1	99.3%
Grade 2	98.7%
Grade 3	99.4%
Grade 4	99.3%
Grade 5	99.3%

Class Size (Percentage by Range) (2011-2012)



Student Achievement

Percentage of Students Meeting State Standards (2011-2012)



Exemplary Programs

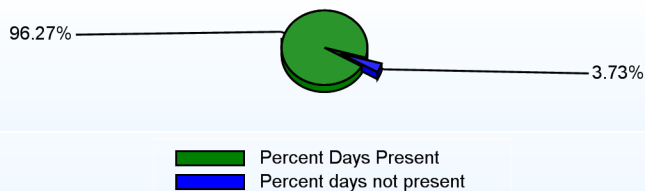
Exemplary programming exists in the daily routine at Brick Mill Elementary. Data drives our teaching. Teachers access data to drive instruction. Our Highly Qualified teachers attend rigorous training in best practices. Current best practices are included in the frameworks of Four Blocks literacy model, 6 Traits Writing, TERC Math Program, hands-on Social Studies units, and Smithsonian/Foss Science kits. These best practices give the teachers effective methods of helping each student meet the Appoquinimink District and State Standards. Each child learns strategies for life-long learning. Integrated curriculum and differentiation are embedded in our educational programs.

Student - School Safety and Discipline

Number of Reported Offenses (2011-2012)

	<u>School</u>	<u>District</u>	<u>State</u>
School Crimes (Title 14, Delaware Code, §4112)	6	71	957
Department of Education (DOE) Offenses	40	658	10291
All School Safety Policy in Place	Yes		

Percent Days Present (2011-2012)



Suspensions and Expulsions

	<u>2012</u>
Number of Suspensions	34
Number of Expulsions	0
Count of Students Suspended/Expelled	15
September 30 Enrollment	741
Percent of Students Suspended/Expelled	2%
District Percentage	11%
State Percentage	15%

Our Staff

Number of Instructional Staff

	<u>2012</u>
Teachers	47
Librarians	1
Pupil Support	5
Total	53

Staff by Race/Ethnicity

	<u>2012</u>
American Indian	0.0%
African American	5.5%
Asian American	1.8%
Hispanic	0.0%
White	92.7%

Staffing Ratios

	<u>2012</u>
Students Per Teacher	16
Students Per Administrator	371
Students Per Instructional Staff	13
Students Per Pupil Support Staff	143
School Staff Per Administrator	38

Staff Qualifications

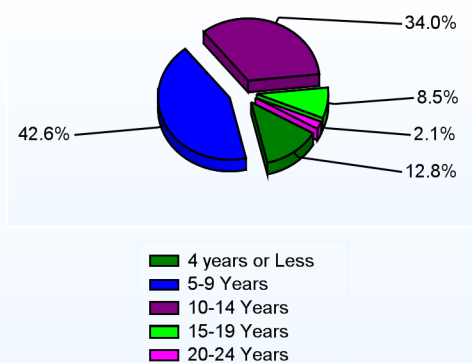
Percentage of Classes Taught by Highly Qualified Teachers (2011-2012)

	<u>Total Classes</u>	<u>% Highly Qualified</u>	<u>% Not Highly Qualified</u>
Arts	5	100.0%	0.0%
Foreign Languages	3	100.0%	0.0%
Elementary General	35	100.0%	0.0%

Education Level

	<u>2012</u>
Percent with Masters Degree and Above	43.9%

Years of Teaching Experience (2011-2012)

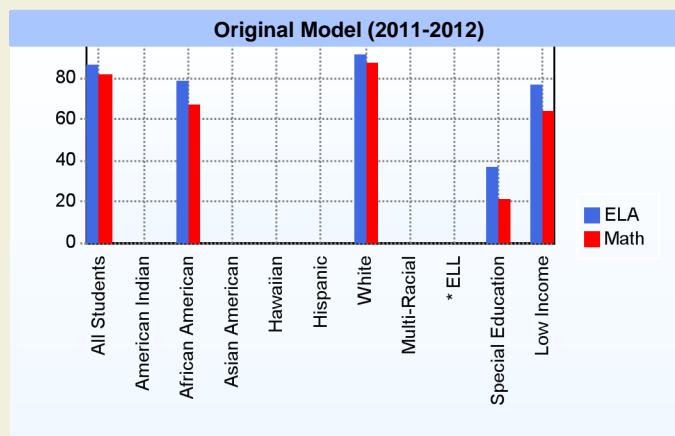


Curriculum Highlights

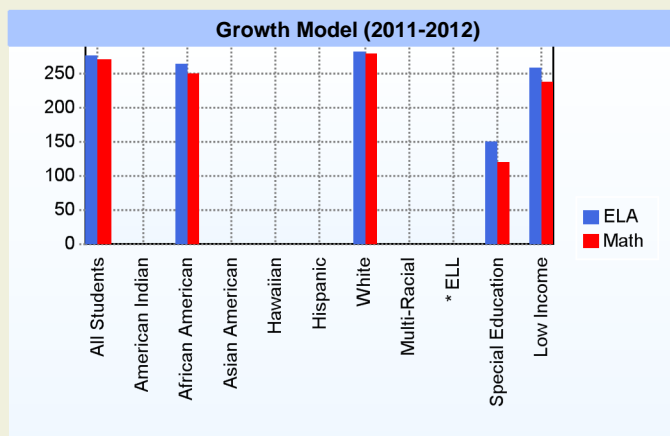
Brick Mill Elementary is joining the global community. We offer French, Spanish, Japanese, Chinese, and Sign Language to our fourth and fifth graders. Technology has been added and updated to move our students toward the 21st Century. Brick Mill's Instructional Focus will be a whole school coordinated effort to have all Brick Mill Elementary students show measurable growth in their ability to write across the curriculum for a variety of audiences and purposes through the implementation of the 6-Traits Model as determined by the analysis of each child's growth on the DSTP, school-wide writing assessments, and the students' ability to meet Delaware State Standards. Teachers will focus on Stand Alone and Text Based writing. Writing will be integrated into Math, Social Studies, Science, and Reading lessons. Students' progress in writing will be monitored throughout the year so that teachers will be able to determine student needs and track their growth in writing.

AYP

Only groups with greater than 40 students are reported



* English Language Learner



* English Language Learner

% Test Participation (2011-2012)

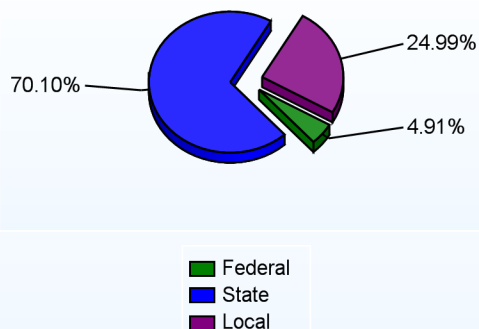
	ELA	Math	ELA Goal	Math Goal
All Students	100	100	95	95
American Indian	*	*	95	95
African American	100	100	95	95
Asian American	*	*	95	95
Hawaiian	*	*	95	95
Hispanic	*	*	95	95
White	100	100	95	95
Multi-Racial	*	*	95	95
English Language Learner	*	*	95	95
Special Education	100	100	95	95
Low Income	100	100	95	95



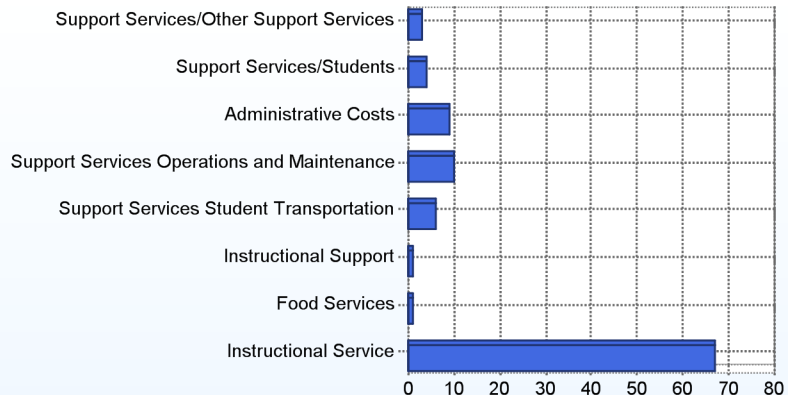
School Finances

District Expenditure per Pupil (2010-2011): \$9,973

District Sources of Revenue (2010-2011)



Percent District Allocation of Current Expenses by Category (2010-2011)



School Salary Allocation

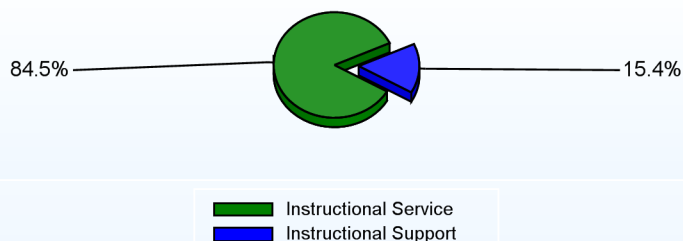
Instructional Service

	2012
Teachers	67.0%
Librarians	2.0%
Instructional Support	8.5%
Pupil Support	7.0%
Total	84.5%

Instructional Support

	2012
Administration	5.6%
Secretaries	2.5%
Food Services	2.6%
Maintenance	4.7%
Total	15.4%

Instructional vs. Support (2011-2012)



For further information and detailed reports, visit

<http://profiles.doe.k12.de.us>

or contact your local school district office.

Glossary: <http://profiles.doe.k12.de.us/glossary.aspx>



Delaware Department of Education

John G. Townsend Building
401 Federal Street, Suite #2
Dover, Delaware, 19901 - 3639
Phone: (302) 735-4000

District: Appoquinimink School District

Telephone: (302) 449-5873

Address: 1221 Cedar Lane Road, Middletown DE 19709

Web: www.apposchooldistrict.com/schools/clecc.cfm

Principal:

AYP: Met

School Demographics

Fall Enrollment		
	2011	2012
Pre-Kindergarten	27	20
Kindergarten	250	224
Total	277	244

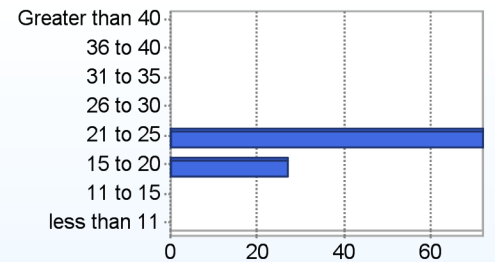
Recently Arrived ELL Students	
	2012
Number of Students Not Tested on ELA Assessment	0

Enrollment by Race/Ethnicity		
	2011	2012
African American	17.0%	21.7%
American Indian	0.7%	
Asian	9.0%	5.7%
Hispanic/Latino	4.3%	3.3%
White	64.6%	66.4%
Multi-Racial	4.3%	2.9%

School Promotion by Grade	
	2011
Kindergarten	98.8%

Other Student Characteristics		
	2011	2012
English Language Learner	6.0%	4.0%
Low Income	17.6%	21.0%
Special Education	2.4%	5.8%
Enrolled for Full Year	97.2%	N/A

Class Size (Percentage by Range) (2011-2012)



Exemplary Programs

Full-day kindergarten allows children and teachers more time to explore topics in depth by reducing the transitions kindergarteners experience in a typical day. It provides an environment that favors a child-centered, developmentally appropriate approach to curriculum. We understand that students come to school with a variety of comfort levels about being away from familiar caregivers. Children are changing, growing and adapting rapidly at this point in their lives. This change, while sometimes hard for parents, is a positive one in a student's development.

Student - School Safety and Discipline

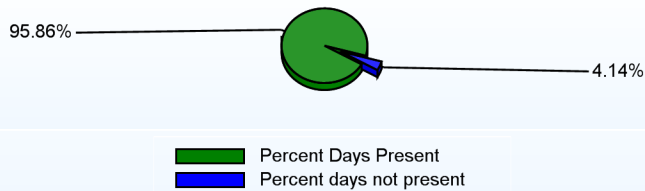
Number of Reported Offenses (2011-2012)

	<u>School</u>	<u>District</u>	<u>State</u>
School Crimes (Title 14, Delaware Code, §4112)		71	957
Department of Education (DOE) Offenses		658	10291
All School Safety Policy in Place	Yes		

Suspensions and Expulsions

	<u>2012</u>
September 30 Enrollment	244
District Percentage	11%
State Percentage	15%

Percent Days Present (2011-2012)



Our Staff

Number of Instructional Staff

	<u>2012</u>
Teachers	16
Pupil Support	3
Total	19

Staff by Race/Ethnicity

	<u>2012</u>
American Indian	0.0%
African American	10.5%
Asian American	5.3%
Hispanic	0.0%
White	84.2%

Staffing Ratios

	<u>2012</u>
Students Per Teacher	15
Students Per Administrator	244
Students Per Instructional Staff	11
Students Per Pupil Support Staff	98
School Staff Per Administrator	30

Staff Qualifications

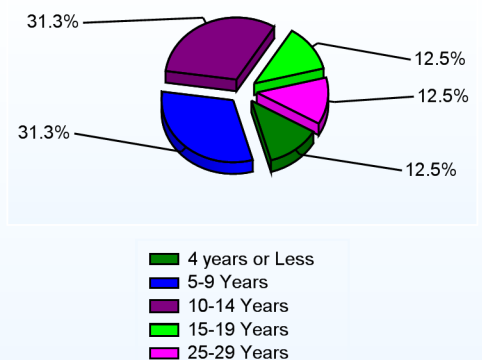
Percentage of Classes Taught by Highly Qualified Teachers (2011-2012)

	<u>Total Classes</u>	<u>% Highly Qualified</u>	<u>% Not Highly Qualified</u>
Arts	2	100.0%	0.0%
Elementary General	11	100.0%	0.0%

Education Level

	<u>2012</u>
Percent with Masters Degree and Above	40.0%

Years of Teaching Experience (2011-2012)



Curriculum Highlights

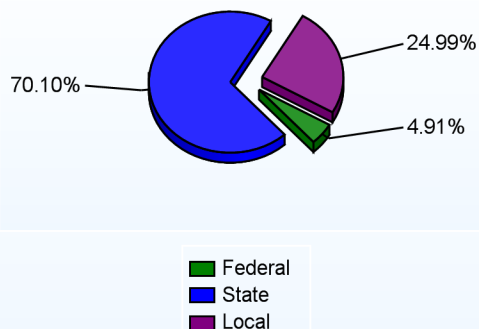
Full-day kindergarten includes field trips as an extension of curriculum and class experiences, math discovery and inquiry, Kid Writing, shared and guided reading, hands-on Science, Social Studies awareness, Learning centers, lunch and recess, Music and Movement class, Art Enrichment program, Enrichment assemblies, and Extra Curricular activities.



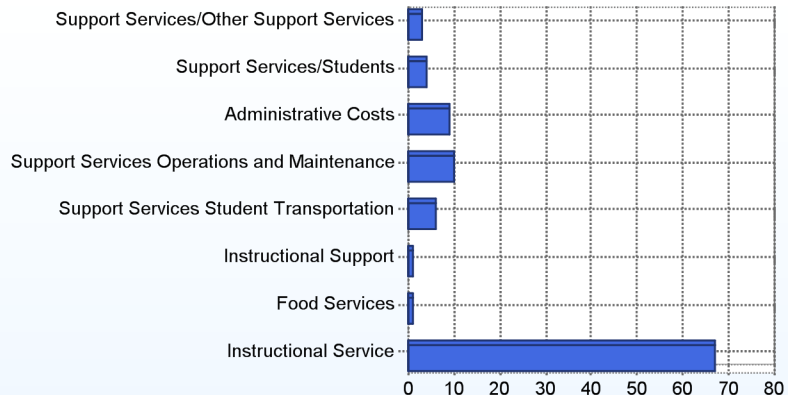
School Finances

District Expenditure per Pupil (2010-2011): \$9,973

District Sources of Revenue (2010-2011)



Percent District Allocation of Current Expenses by Category (2010-2011)



School Salary Allocation

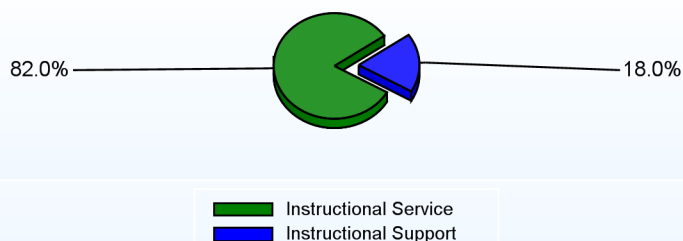
Instructional Service

	2012
Teachers	63.2%
Instructional Support	9.7%
Pupil Support	9.1%
Total	82.0%

Instructional Support

	2012
Administration	7.7%
Secretaries	5.1%
Food Services	1.8%
Maintenance	3.4%
Total	18.0%

Instructional vs. Support (2011-2012)



For further information and detailed reports, visit

<http://profiles.doe.k12.de.us>

or contact your local school district office.

Glossary: <http://profiles.doe.k12.de.us/glossary.aspx>



Delaware Department of Education

John G. Townsend Building
401 Federal Street, Suite #2
Dover, Delaware, 19901 - 3639
Phone: (302) 735-4000

District: Appoquinimink School District
Address: 1235 Cedar Lane Road, Middletown DE 19709
Principal: Victoir Cahoon
AYP: Met

Telephone: (302) 449-3490
Web: www.agwaters.org/

School Demographics

Fall Enrollment		
	2011	2012
Grade 6	261	271
Grade 7	246	269
Grade 8	292	251
Total	799	791

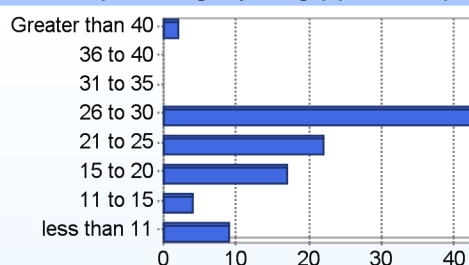
Recently Arrived ELL Students	
	2012
Number of Students Not Tested on ELA Assessment	2

Enrollment by Race/Ethnicity		
	2011	2012
African American	15.8%	15.4%
American Indian	1.0%	1.0%
Asian	6.3%	6.1%
Hispanic/Latino	2.3%	3.0%
White	74.5%	73.1%
Multi-Racial	0.3%	1.4%

School Promotion by Grade	
	2011
Grade 6	99.6%
Grade 7	100.0%
Grade 8	99.7%

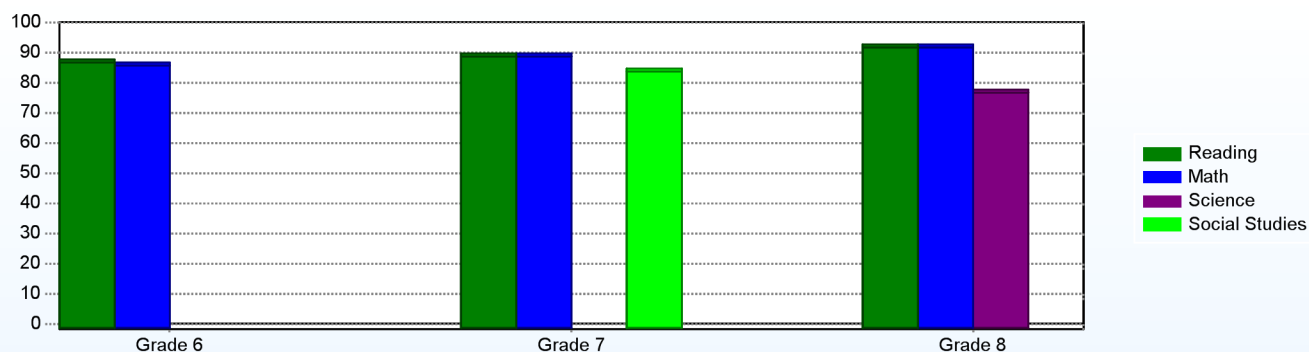
Other Student Characteristics		
	2011	2012
English Language Learner	0.1%	0.3%
Low Income	9.0%	10.7%
Special Education	6.5%	5.8%
Enrolled for Full Year	98.7%	N/A

Class Size (Percentage by Range) (2011-2012)



Student Achievement

Percentage of Students Meeting State Standards (2011-2012)



Exemplary Programs

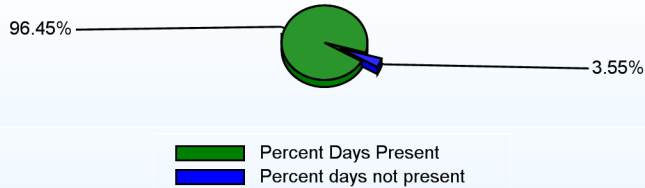
Students at Waters are provided opportunities that complement daily instruction in the areas of academics, athletics, service, and performing arts. The Student Council provides activities all throughout the year to involve students in the school and community. The music program includes an after school jazz band, an district honor band, a new 6th grade strings program and opportunities that enables the students to excel musically. After school opportunities include intramurals, Science Olympiad, BPA, Odyssey of the Mind, Talent Development, National Junior Honor Society, FFA, computer club, CREW (PBS student group), AGW Idol, Math 24, Math League, and various other programs.

Student - School Safety and Discipline

Number of Reported Offenses (2011-2012)

	<u>School</u>	<u>District</u>	<u>State</u>
School Crimes (Title 14, Delaware Code, §4112)	2	71	957
Department of Education (DOE) Offenses	78	658	10291

Percent Days Present (2011-2012)



Suspensions and Expulsions

	<u>2012</u>
Number of Suspensions	133
Number of Expulsions	0
Count of Students Suspended/Expelled	75
September 30 Enrollment	791
Percent of Students Suspended/Expelled	9%
District Percentage	11%
State Percentage	15%

Our Staff

Number of Instructional Staff

	<u>2012</u>
Teachers	47
Librarians	1
Pupil Support	4
Total	52

Staff by Race/Ethnicity

	<u>2012</u>
American Indian	0.0%
African American	5.8%
Asian American	0.0%
Hispanic	3.8%
White	90.4%

Staffing Ratios

	<u>2012</u>
Students Per Teacher	17
Students Per Administrator	396
Students Per Instructional Staff	14
Students Per Pupil Support Staff	198
School Staff Per Administrator	38

Staff Qualifications

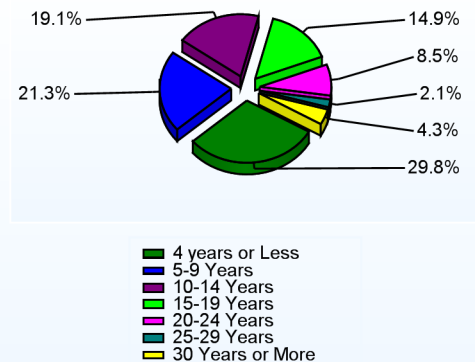
Percentage of Classes Taught by Highly Qualified Teachers (2011-2012)

	<u>Total Classes</u>	<u>% Highly Qualified</u>	<u>% Not Highly Qualified</u>
English	1	100.0%	0.0%
Reading/ Language Arts	33	100.0%	0.0%
Arts	32	100.0%	0.0%
Foreign Languages	49	100.0%	0.0%
Science	31	100.0%	0.0%
Mathematics	33	100.0%	0.0%
Social Studies	30	86.7%	13.3%

Education Level

	<u>2012</u>
Percent with Masters Degree and Above	57.4%

Years of Teaching Experience (2011-2012)

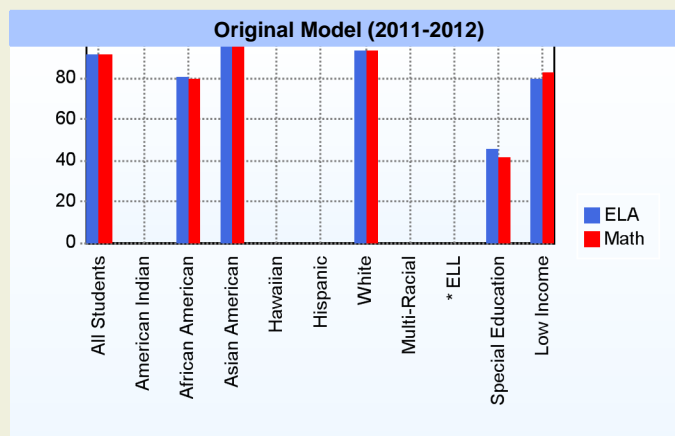


Curriculum Highlights

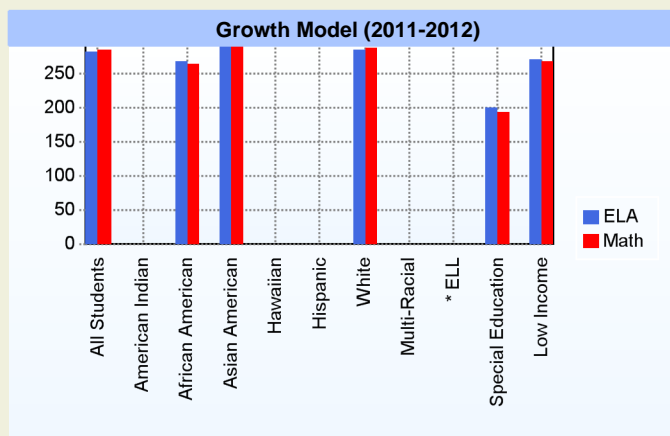
The language arts program helps students to develop and practice literacy strategies. At Waters, we stress reading and writing. Reading programs start with summer reading and continue with the Accelerated Reader program. We approach writing using a variety of tools and techniques to help students communicate. The math curriculum supports the Delaware State Standards, yet use real-life situations to act as starting points. Problem-solving and critical thinking strategies are developed, compared and analyzed. Ideas are spiraled and advanced through the curriculum, enhancing mastery. Science rooms are places for our students to observe, experiment, and to think critically. The Social Studies curriculum starts in sixth grade with historical societies and their relationships and influence on the world. Eighth graders focus on United States history with an emphasis on social, economic, and political evolution. Our students are being prepared for a 21st century global market place.

AYP

Only groups with greater than 40 students are reported



* English Language Learner



* English Language Learner

% Test Participation (2011-2012)

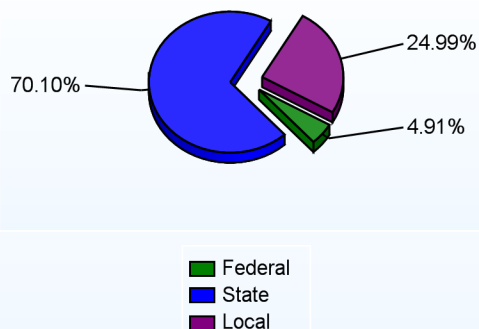
	<u>ELA</u>	<u>Math</u>	<u>ELA Goal</u>	<u>Math Goal</u>
All Students	100	100	95	95
American Indian	*	*	95	95
African American	100	100	95	95
Asian American	100	100	95	95
Hawaiian	*	*	95	95
Hispanic	*	*	95	95
White	100	100	95	95
Multi-Racial	*	*	95	95
English Language Learner	*	*	95	95
Special Education	100	100	95	95
Low Income	100	100	95	95



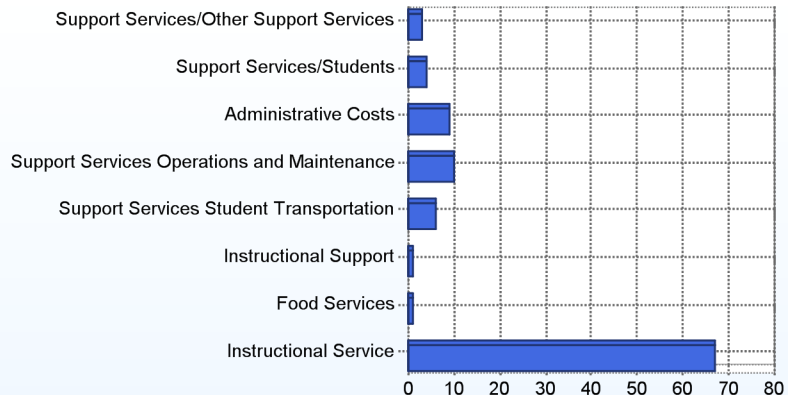
School Finances

District Expenditure per Pupil (2010-2011): \$9,973

District Sources of Revenue (2010-2011)



Percent District Allocation of Current Expenses by Category (2010-2011)



School Salary Allocation

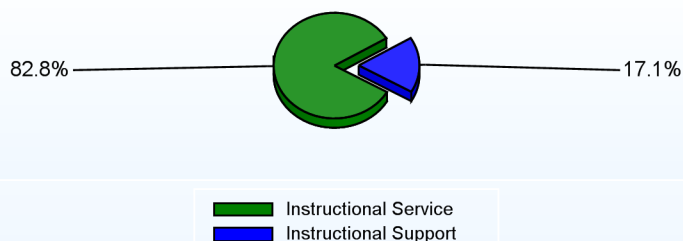
Instructional Service

	2012
Teachers	69.8%
Librarians	1.1%
Instructional Support	5.7%
Pupil Support	6.2%
Total	82.8%

Instructional Support

	2012
Administration	5.4%
Secretaries	2.3%
Food Services	3.1%
Maintenance	6.3%
Total	17.1%

Instructional vs. Support (2011-2012)



For further information and detailed reports, visit

<http://profiles.doe.k12.de.us>

or contact your local school district office.

Glossary: <http://profiles.doe.k12.de.us/glossary.aspx>



Delaware Department of Education

John G. Townsend Building
401 Federal Street, Suite #2
Dover, Delaware, 19901 - 3639
Phone: (302) 735-4000

District: Appoquinimink School District
Address: 1080 Bunker Hill Road, Middletown DE 19709
Principal: Gayle Rutter
AYP: Met

Telephone: (302) 449-3840

Web: www.appohigh.org/

School Demographics

Fall Enrollment		
	2011	2012
Grade 9	409	405
Grade 10	378	386
Grade 11	328	378
Grade 12	266	323
Total	1381	1492

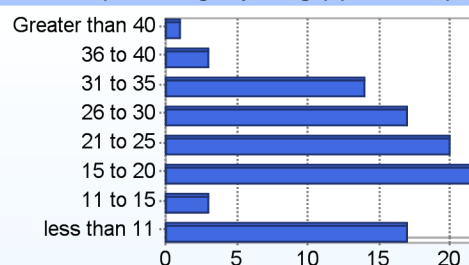
Enrollment by Race/Ethnicity		
	2011	2012
African American	24.7%	25.3%
American Indian	0.2%	0.1%
Asian	3.7%	4.0%
Hispanic/Latino	4.9%	4.4%
White	65.8%	65.3%
Multi-Racial	0.7%	0.8%

Other Student Characteristics		
	2011	2012
English Language Learner	1.2%	0.8%
Low Income	16.4%	17.8%
Special Education	7.5%	6.3%
Enrolled for Full Year	97.5%	N/A

Recently Arrived ELL Students	
	2012
Number of Students Not Tested on ELA Assessment	0

School Promotion by Grade	
	2011
Grade 9	96.1%
Grade 10	98.4%
Grade 11	97.3%
Grade 12	100.0%

Class Size (Percentage by Range) (2011-2012)

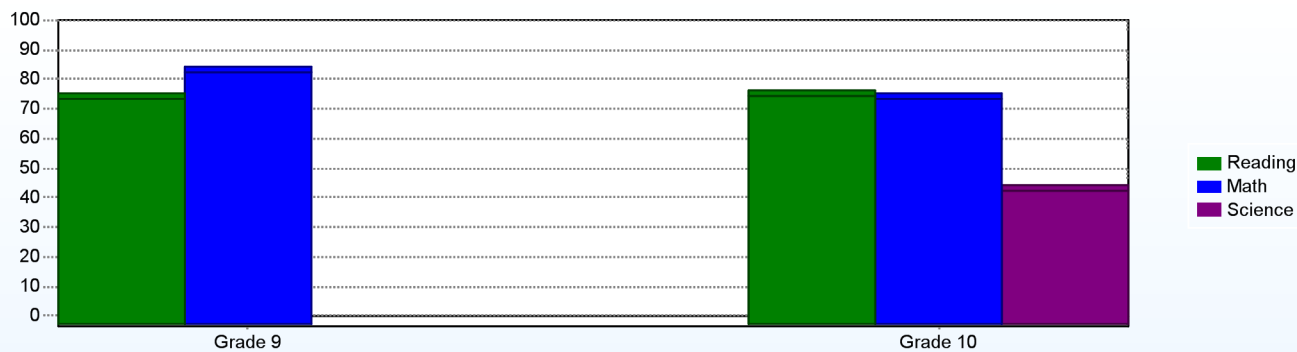


Student Achievement

Advanced Placement (AP) (2010-2011)	
	2011
Advanced Placement Courses	16
No. of Students Enrolled	188
No. of Exams Taken	164
Total No. of Exams Passed	113

Public School SAT Reasoning Test (Average Score) (2010-2011)				
	School	District	State	National
Math	460	493	477	514
Critical Reading	410	488	472	497
Writing	370	477	457	489
Total	1,240	1,458	1,406	1,500

Percentage of Students Meeting State Standards (2011-2012)



Exemplary Programs

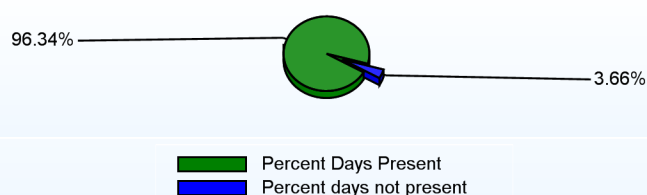
The AHS JRPTC program grew tremendously under the leadership of Chief Hiram Benitez and Master Chief Carl Suddler. The Army JROTC Jaguar Battalion competed in 8 challenges/competitions this year. They earned two first place, three 2nd place and four 3rd place finished. The ROTC also participated in many service activities such as placing US flags on the grave markers at the Delaware Veterans Memorial Cemetery in November, ran a "Stockings for Soldiers" campaign drive, and supported the Blood Drive at AHS.

Student - School Safety and Discipline

Number of Reported Offenses (2011-2012)

	<u>School</u>	<u>District</u>	<u>State</u>
School Crimes (Title 14, Delaware Code, §4112)	15	71	957
Department of Education (DOE) Offenses	58	658	10291
All School Safety Policy in Place	Yes		

Percent Days Present (2011-2012)



Suspensions and Expulsions

	<u>2012</u>
Number of Suspensions	1330
Number of Expulsions	0
Count of Students Suspended/Expelled	418
September 30 Enrollment	1492
Percent of Students Suspended/Expelled	28%
District Percentage	11%
State Percentage	15%

Our Staff

Number of Instructional Staff

	<u>2012</u>
Teachers	82
Librarians	1
Pupil Support	8
Total	91

Staff by Race/Ethnicity

	<u>2012</u>
American Indian	0.0%
African American	9.9%
Asian American	1.1%
Hispanic	1.1%
White	87.9%

Staffing Ratios

	<u>2012</u>
Students Per Teacher	18
Students Per Administrator	373
Students Per Instructional Staff	16
Students Per Pupil Support Staff	187
School Staff Per Administrator	32

Staff Qualifications

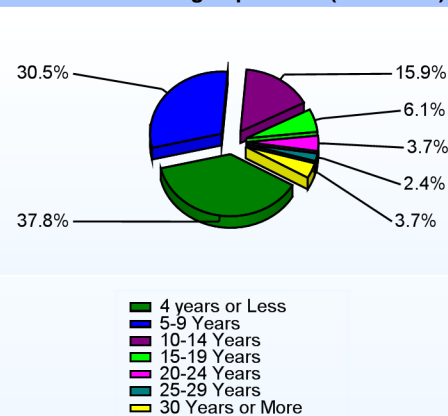
Percentage of Classes Taught by Highly Qualified Teachers (2011-2012)

	<u>Total Classes</u>	<u>% Highly Qualified</u>	<u>% Not Highly Qualified</u>
English	69	100.0%	0.0%
Arts	30	100.0%	0.0%
Foreign Languages	51	100.0%	0.0%
Science	68	100.0%	0.0%
Mathematics	66	100.0%	0.0%
Economics	1	100.0%	0.0%
Social Studies	61	100.0%	0.0%
History	7	100.0%	0.0%

Education Level

	<u>2012</u>
Percent with Masters Degree and Above	47.1%

Years of Teaching Experience (2011-2012)



Curriculum Highlights

- AHS has added seven Advanced Placement courses to include: Calculus, Literature & Language, Music Theory, World History, Psychology, Physics and Chemistry.
- Leading up to graduation our seniors completed their Senior Projects which include academic research, creative components and service. There was a large concentration of projects that were dedicated to service in the community. Students raised money and dedicated their time to such causes as Relay for Life, Autism, Food Banks, and community centers throughout New Castle County
- The AHS Science Olympiad Team earned 32 medals and its first 1st place medal in school history.
- Our 11th grade science students designed and planted a native plant butterfly garden. Students used supplies donated from DonorChoose.org to complete this project.

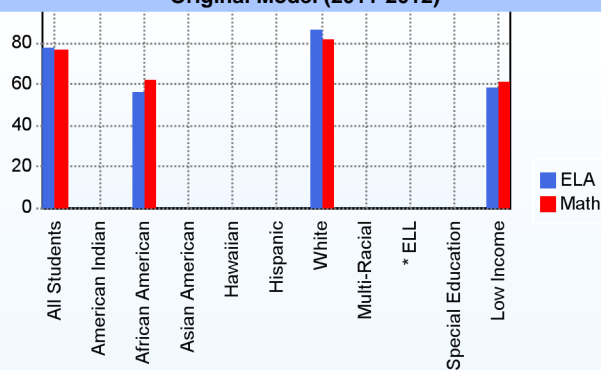
Graduation Rate - ESEA 4 Year Adjusted

	2010	2011
	ESEA	ESEA
All Students	0.0%	88.2%
American Indian		100.0%
African American	0.0%	82.6%
Asian American		100.0%
Hispanic	0.0%	94.4%
White	0.0%	89.6%
Multi-Racial		100.0%
English Language Learner		87.5%
Special Education	0.0%	71.4%
Low Income	0.0%	80.6%

AYP

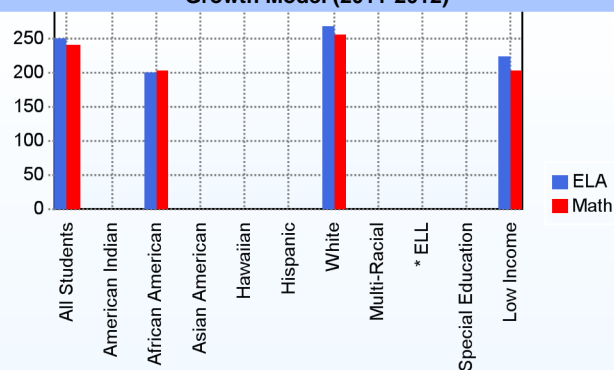
Only groups with greater than 40 students are reported

Original Model (2011-2012)



* English Language Learner

Growth Model (2011-2012)



* English Language Learner

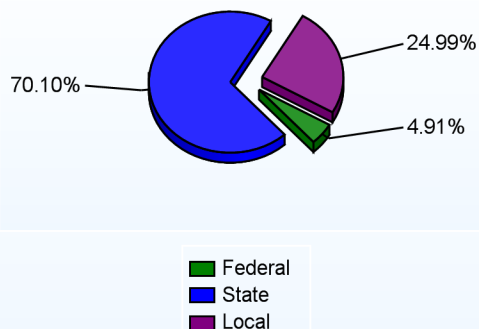
% Test Participation (2011-2012)

	ELA	Math	ELA Goal	Math Goal
All Students	100	100	95	95
American Indian	*	*	95	95
African American	100	100	95	95
Asian American	*	*	95	95
Hawaiian	*	*	95	95
Hispanic	*	*	95	95
White	100	100	95	95
Multi-Racial	*	*	95	95
English Language Learner	*	*	95	95
Special Education	*	*	95	95
Low Income	100	100	95	95

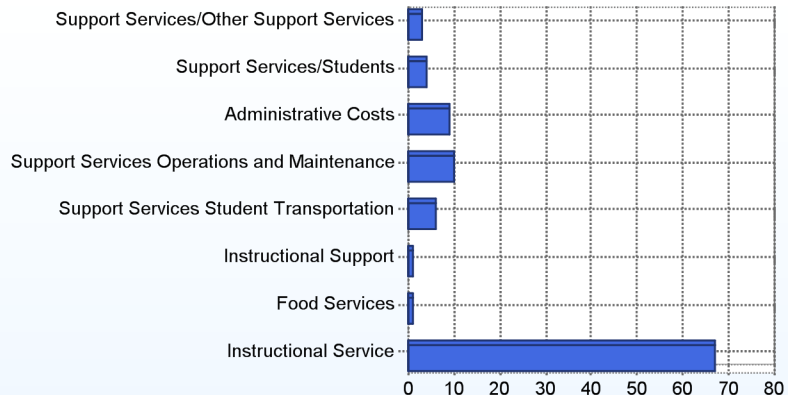
School Finances

District Expenditure per Pupil (2010-2011): \$9,973

District Sources of Revenue (2010-2011)



Percent District Allocation of Current Expenses by Category (2010-2011)



School Salary Allocation

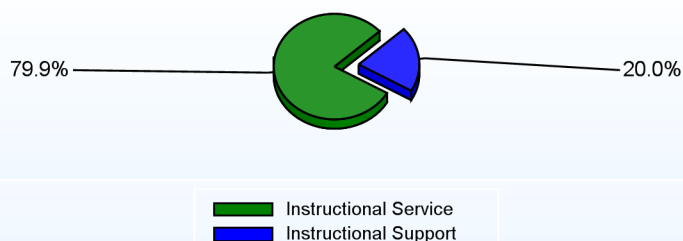
Instructional Service

	2012
Teachers	66.4%
Librarians	1.1%
Instructional Support	5.2%
Pupil Support	7.2%
Total	79.9%

Instructional Support

	2012
Administration	6.5%
Secretaries	2.6%
Food Services	2.1%
Maintenance	6.9%
Not Classified	1.9%
Total	20.0%

Instructional vs. Support (2011-2012)



For further information and detailed reports, visit

<http://profiles.doe.k12.de.us>

or contact your local school district office.

Glossary: <http://profiles.doe.k12.de.us/glossary.aspx>



Delaware Department of Education

John G. Townsend Building
401 Federal Street, Suite #2
Dover, Delaware, 19901 - 3639
Phone: (302) 735-4000

District: Appoquinimink School District
Address: 10 Brook Ramble Lane, Townsend DE 19734
Principal: Lucia Weathers
AYP: Met

Telephone: (302) 378-9960
Web: www.apposchooldistrict.com/schools/tecc.cfm

School Demographics

Fall Enrollment		
	2011	2012
Pre-Kindergarten	26	3
Kindergarten	183	199
Total	209	202

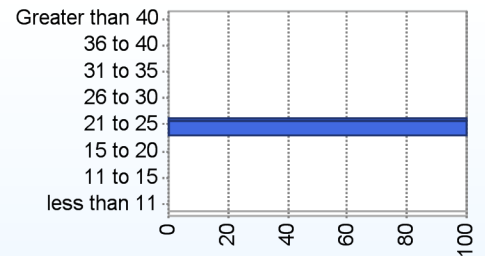
Recently Arrived ELL Students	
	2012
Number of Students Not Tested on ELA Assessment	0

Enrollment by Race/Ethnicity		
	2011	2012
African American	16.3%	13.9%
American Indian	1.0%	
Asian		2.0%
Hispanic/Latino	3.3%	5.0%
White	75.6%	73.3%
Multi-Racial	3.8%	5.9%

School Promotion by Grade	
	2011
Kindergarten	98.9%

Other Student Characteristics		
	2011	2012
English Language Learner	1.1%	3.5%
Low Income	23.0%	20.1%
Special Education	6.6%	8.0%
Enrolled for Full Year	97.3%	N/A

Class Size (Percentage by Range) (2011-2012)



Exemplary Programs

Townsend Early Childhood Center provides developmentally appropriate learning experiences for some of the district's youngest students. There are half day sessions for early intervention and full day kindergarten classes for all students. The kindergarten curriculum includes Language and Literacy, hands on activities in Science and Mathematics, and weekly classes for Visual and Performing Arts. The entire teaching staff at TECC is Highly Qualified implementing current strategies and interventions to meet the needs of every student.

Student - School Safety and Discipline

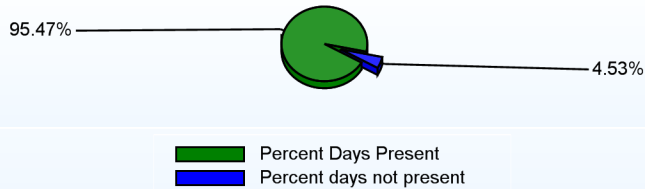
Number of Reported Offenses (2011-2012)

	<u>District</u>	<u>State</u>
School Crimes (Title 14, Delaware Code, §4112)	71	957
Department of Education (DOE) Offenses	658	10291

Suspensions and Expulsions

	<u>2012</u>
September 30 Enrollment	202
District Percentage	11%
State Percentage	15%

Percent Days Present (2011-2012)



Our Staff

Number of Instructional Staff

	<u>2012</u>
Teachers	13
Pupil Support	2
Total	15

Staff by Race/Ethnicity

	<u>2012</u>
American Indian	0.0%
African American	0.0%
Asian American	0.0%
Hispanic	0.0%
White	100.0%

Staffing Ratios

	<u>2012</u>
Students Per Teacher	15
Students Per Administrator	202
Students Per Instructional Staff	11
Students Per Pupil Support Staff	135
School Staff Per Administrator	23

Staff Qualifications

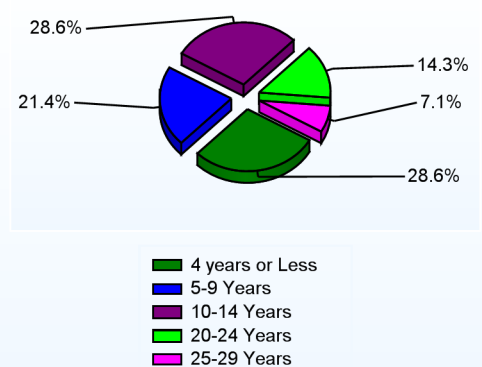
Percentage of Classes Taught by Highly Qualified Teachers (2011-2012)

	<u>Total Classes</u>	<u>% Highly Qualified</u>	<u>% Not Highly Qualified</u>
Arts	2	100.0%	0.0%
Elementary General	9	100.0%	0.0%

Education Level

	<u>2012</u>
Percent with Masters Degree and Above	33.3%

Years of Teaching Experience (2011-2012)



Curriculum Highlights

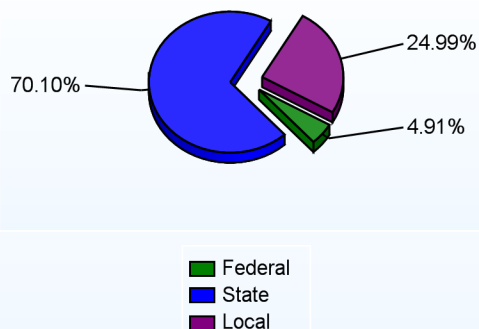
TECC's full day kindergarten renders comprehensive learning experiences to enhance academic achievement and to improve social and emotional skills. More time at school allows for appropriate challenges in reading and math for intervention and for students who are advanced. During a full day of school, there is ample time for teachers to interact with students and for students to become actively engaged in meaningful projects.



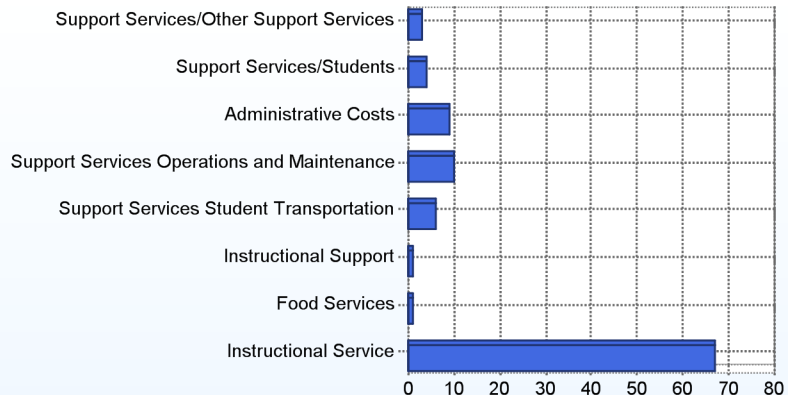
School Finances

District Expenditure per Pupil (2010-2011): \$9,973

District Sources of Revenue (2010-2011)



Percent District Allocation of Current Expenses by Category (2010-2011)



School Salary Allocation

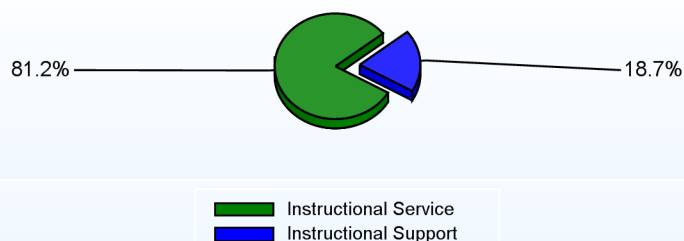
Instructional Service

	2012
Teachers	64.1%
Instructional Support	11.3%
Pupil Support	5.8%
Total	81.2%

Instructional Support

	2012
Administration	8.9%
Secretaries	3.9%
Food Services	2.2%
Maintenance	3.7%
Total	18.7%

Instructional vs. Support (2011-2012)



For further information and detailed reports, visit

<http://profiles.doe.k12.de.us>

or contact your local school district office.

Glossary: <http://profiles.doe.k12.de.us/glossary.aspx>



Delaware Department of Education

John G. Townsend Building
401 Federal Street, Suite #2
Dover, Delaware, 19901 - 3639
Phone: (302) 735-4000

District: Appoquinimink School District
Address: 1070 Bunker Hill Road, Middletown DE 19709
Principal: Jeff Davis
AYP: Met

Telephone: (302) 378-5135
Web: www.bunkerhillelem.org/

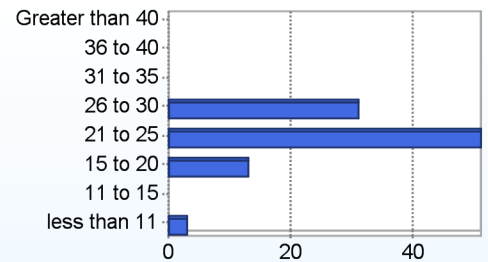
School Demographics

Fall Enrollment		
	2012	2013
Grade 1	125	92
Grade 2	137	119
Grade 3	155	141
Grade 4	156	166
Grade 5	142	149
Total	715	667

Enrollment by Race/Ethnicity		
	2012	2013
African American	26.9%	25.6%
American Indian	0.1%	
Asian	2.7%	2.8%
Hispanic/Latino	6.4%	6.4%
White	62.0%	62.4%
Multi-Racial	2.0%	2.7%

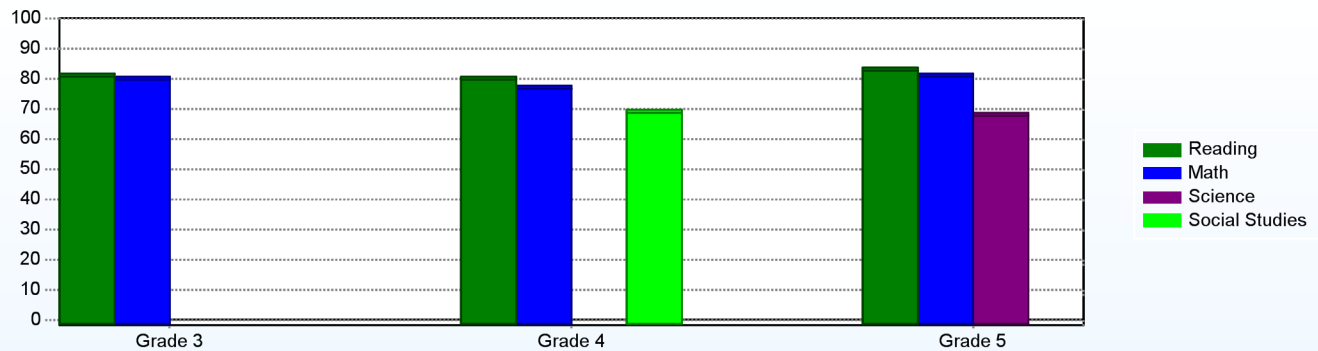
School Promotion by Grade	
	2012
Grade 1	100.0%
Grade 2	100.0%
Grade 3	100.0%
Grade 4	99.4%
Grade 5	100.0%

Class Size (Percentage by Range) (2012-2013)



Student Achievement

Percentage of Students Meeting State Standards (2011-2012)



Exemplary Programs

(1) Our first-ever BHE Drama Club was a huge success! 4th and 5th grade students put on a spectacular production of "Dear Edwina Jr.". Under the superb direction of Britni Lassiter (BHE school secretary) and Amanda Ostrusky (BHE music teacher), 20 students sang, danced, and amazed their audiences!

(2) BHE started Girls On The Run and "Bulldog Runners", two popular after-school running clubs. Parents were very pleased that BHE offered these exercise activities to students and noted their students' improved confidence & interest in healthy living. Both activities culminated with student/staff 5K runs.

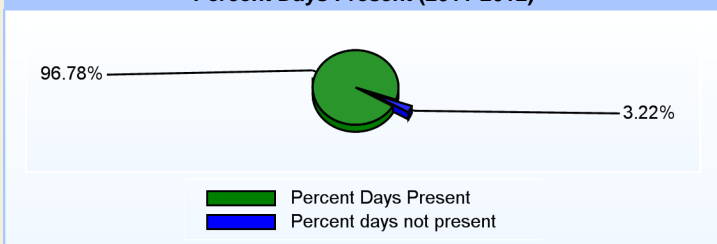
(3) BHE students received 310 positive referrals to the office in 2010-2011, well exceeding their yearly goal of 300! Positive referrals are one of BHE's highest honors and occur when a teacher sees a student going above and beyond our already-high PBS expectations. Students receive a written referral, and parents are called to let them in on the good news!

Student - School Safety and Discipline

Number of Reported Offenses (2011-2012)

	<u>School</u>	<u>District</u>	<u>State</u>
School Crimes (Title 14, Delaware Code, §4112)	1	71	957
Department of Education (DOE) Offenses	4	658	10291

Percent Days Present (2011-2012)



Suspensions and Expulsions

	<u>2012</u>
Number of Suspensions	44
Number of Expulsions	0
Count of Students Suspended/Expelled	29
September 30 Enrollment	715
Percent of Students Suspended/Expelled	4%
District Percentage	11%
State Percentage	15%

Our Staff

Number of Instructional Staff

	<u>2013</u>
Teachers	40
Pupil Support	4
Total	44

Staff by Race/Ethnicity

	<u>2013</u>
American Indian	0.0%
African American	13.6%
Asian American	0.0%
Hispanic	2.3%
White	84.1%

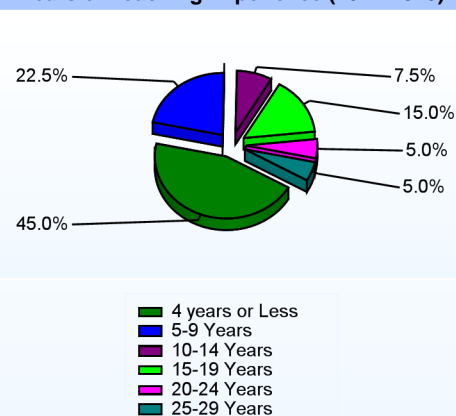
Staffing Ratios

	<u>2013</u>
Students Per Teacher	17
Students Per Administrator	334
Students Per Instructional Staff	14
Students Per Pupil Support Staff	191
School Staff Per Administrator	32

Education Level

	<u>2013</u>
Percent with Masters Degree and Above	52.8%

Years of Teaching Experience (2012-2013)



Curriculum Highlights

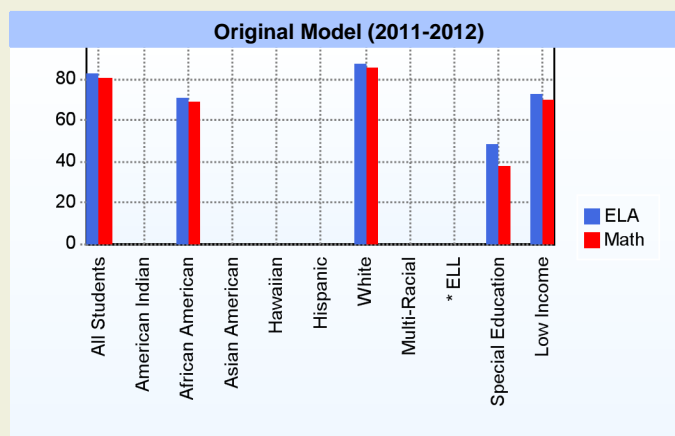
Here at Bunker Hill, students have the chance to work with the latest technology in their classrooms. We have sound amplification systems, LCD projectors, SMART Boards, document cameras, DVD players, and Internet capability in each of our 35 classrooms. Students take Technology education as a related Arts class, along with Music, P.E., and Art.

Bunker Hill also offers Foreign languages to our 4th & 5th graders. Students learn 8 weeks each of Japanese, Chinese, French, and Spanish throughout the year. Students also participate in Talent Development activities once a week for enrichment – everything from exercise classes to arts & crafts!

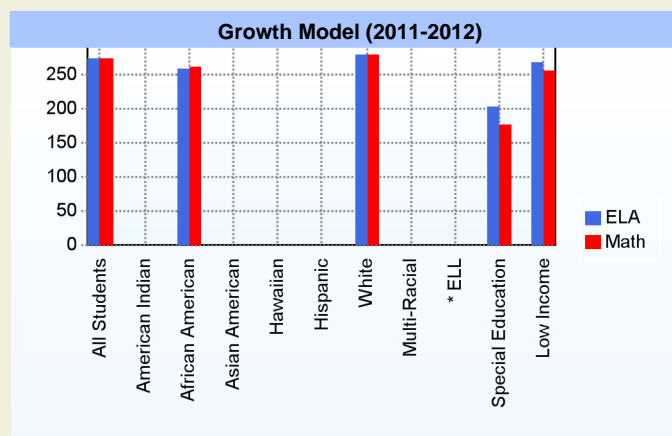
But that's just part of the story. Our real strength is in the diversity of our students, parents, and staff. Our parents and PTA are top-notch, always helping out at the school or working at home with their students. Our teachers are well-trained in their profession, and they always put students first!

AYP

Only groups with greater than 40 students are reported



* English Language Learner



* English Language Learner

% Test Participation (2011-2012)

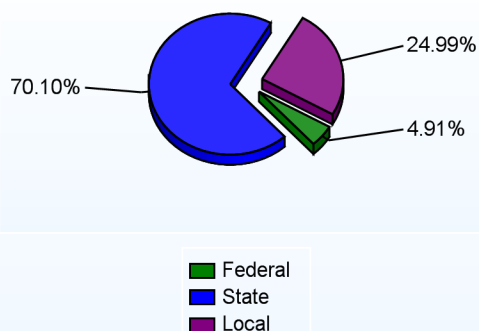
	<u>ELA</u>	<u>Math</u>	<u>ELA Goal</u>	<u>Math Goal</u>
All Students	100	100	95	95
American Indian	*	*	95	95
African American	100	100	95	95
Asian American	*	*	95	95
Hawaiian	*	*	95	95
Hispanic	*	*	95	95
White	100	100	95	95
Multi-Racial	*	*	95	95
English Language Learner	*	*	95	95
Special Education	*	*	95	95
Low Income	100	100	95	95



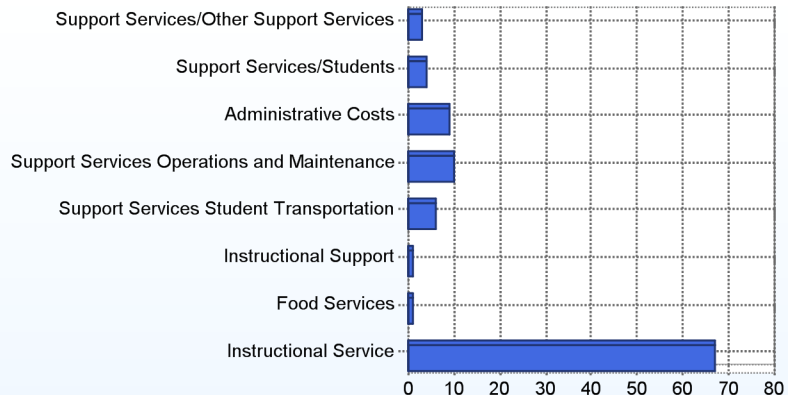
School Finances

District Expenditure per Pupil (2010-2011): \$9,973

District Sources of Revenue (2010-2011)



Percent District Allocation of Current Expenses by Category (2010-2011)



School Salary Allocation

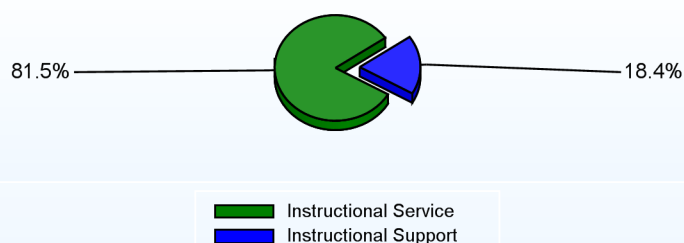
Instructional Service

	2013
Teachers	67.9%
Instructional Support	7.2%
Pupil Support	6.4%
Total	81.5%

Instructional Support

	2013
Administration	6.7%
Secretaries	2.4%
Food Services	3.5%
Maintenance	5.8%
Total	18.4%

Instructional vs. Support (2012-2013)



For further information and detailed reports, visit

<http://profiles.doe.k12.de.us>

or contact your local school district office.

Glossary: <http://profiles.doe.k12.de.us/glossary.aspx>



Delaware Department of Education

John G. Townsend Building
401 Federal Street, Suite #2
Dover, Delaware, 19901 - 3639
Phone: (302) 735-4000