

District: Delaware Academy of Public Safety and Security
Address: 801 North DuPont Highway, New Castle DE 19720
Principal: Herbert Sheldon
AYP: Met

Telephone: (302) 322-6050
Web: www.dapsscharterschool.org

School Demographics

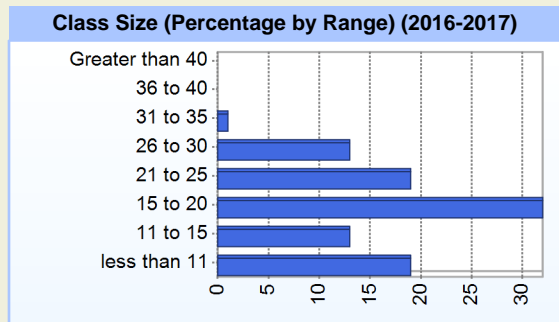
Fall Enrollment		
	2016	2017
Grade 9	78	76
Grade 10	71	83
Grade 11	74	53
Grade 12	80	58
Total	303	270

Enrollment by Race/Ethnicity		
	2016	2017
African American	30.7%	38.5%
American Indian	0.3%	0.4%
Asian	1.3%	0.7%
Hawaiian		0.4%
Hispanic/Latino	17.5%	17.4%
White	49.8%	41.9%
Multi-Racial	0.3%	0.7%

Other Student Characteristics		
	2016	2017
English Language Learner	3.6%	2.6%
Low Income	32.3%	37.4%
Special Education	19.5%	25.2%
Enrolled for Full Year	100.0%	N/A

Recently Arrived ELL Students	
	2017
Number of Students Not Tested on ELA Assessment	0

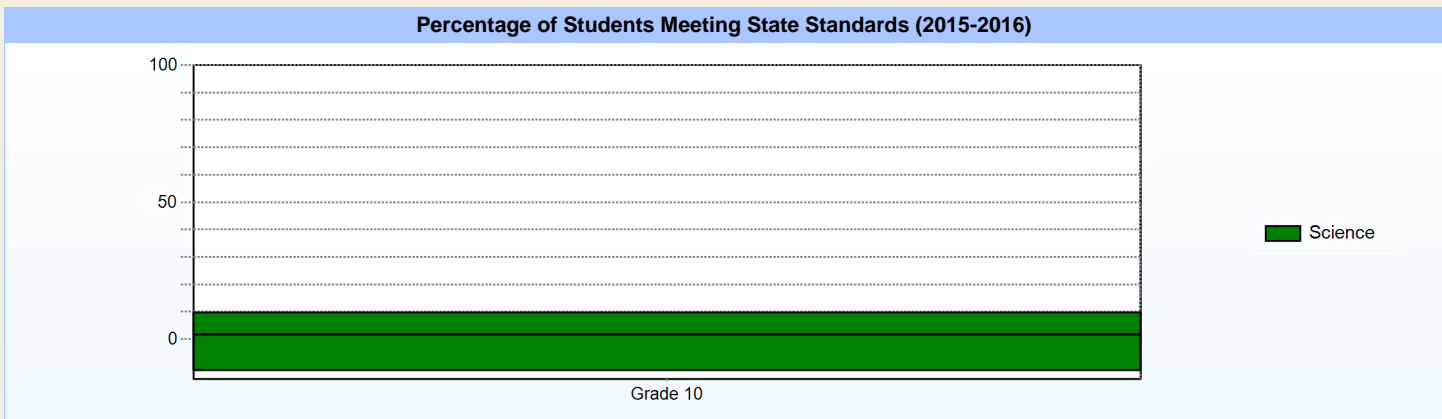
School Promotion by Grade	
	2015
Grade 9	82.9%
Grade 10	89.4%
Grade 11	96.0%
Grade 12	98.7%



Student Achievement

Advanced Placement (AP) (2015-2016)	
	2016
Advanced Placement Courses	1
No. of Students Enrolled	9
No. of Exams Taken	7
Total No. of Exams Passed	1

SAT: Average Scores for the Class of (2015-2016)			
	School	District	State
Math	383	383	442
Critical Reading	403	403	437
Writing	350	350	406
Total	1,136	1,136	1,285



Exemplary Programs

The Delaware Academy of Public Safety and Security (DAPSS) is a charter high school dedicated to providing a rigorous academic curriculum that meets State of Delaware standards as well as providing cadets practical career training in the public safety field.

As a model of excellence in the public safety field, DAPSS will strive to earn the respect of the community. DAPSS will develop disciplined and responsive individuals that will become the trusted and preferred choice of public safety organizations and/or post-secondary institutions. DAPSS graduates will exhibit the core values of fidelity to others, diligence to succeed, and scholarship in the classroom.

Student - School Safety and Discipline

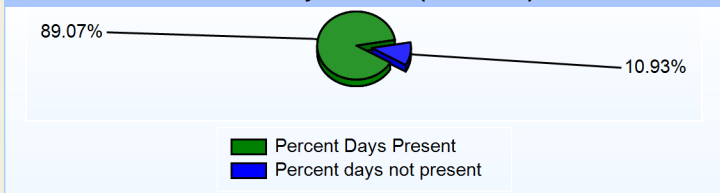
Number of Reported Offenses (2015-2016)

	<u>School</u>	<u>District</u>	<u>State</u>
School Crimes (Title 14, Delaware Code, §4112)	8	8	793
Department of Education (DOE) Offenses	42	42	12978
All School Safety Policy in Place	N/A		

Suspensions and Expulsions

	<u>2016</u>
Number of Suspensions	171
Number of Expulsions	3
Count of Students Suspended/Expelled	87
September 30 Enrollment	303
Percent of Students Suspended/Expelled	29%
District Percentage	29%
State Percentage	13%

Percent Days Present (2016-2017)



Our Staff

Number of Instructional Staff

	<u>2017</u>
Teachers	20
Instructional Support	5
Pupil Support	2
Total	27

Staff by Race/Ethnicity

	<u>2017</u>
American Indian	0.0%
African American	22.2%
Asian American	0.0%
Hispanic	11.1%
White	66.7%

Staffing Ratios

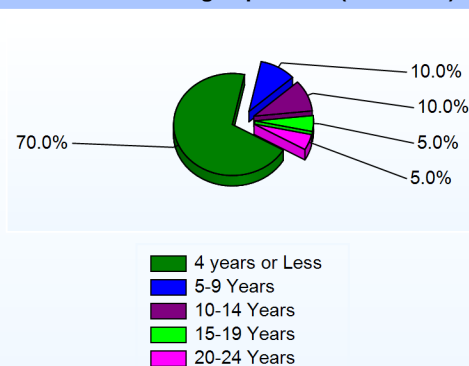
	<u>2017</u>
Students Per Teacher	14
Students Per Administrator	270
Students Per Instructional Staff	11
Students Per Pupil Support Staff	135
School Staff Per Administrator	40

Staff Qualifications

Percentage of Classes Taught by Highly Qualified Teachers (2015-2016)

	<u>Total Classes</u>	<u>% Highly Qualified</u>	<u>% Not Highly Qualified</u>
English	17	94.1%	5.9%
Arts	1	0.0%	100.0%
Foreign Languages	11	100.0%	0.0%
Science	17	94.1%	5.9%
Mathematics	18	100.0%	0.0%
Geography	4	100.0%	0.0%
Civics & Government	4	50.0%	50.0%
History	8	50.0%	50.0%

Years of Teaching Experience (2016-2017)



Education Level

	<u>2017</u>
Percent with Masters Degree and Above	25.9%
Percent Holding National Board for Professional Teaching Standards	0.0%

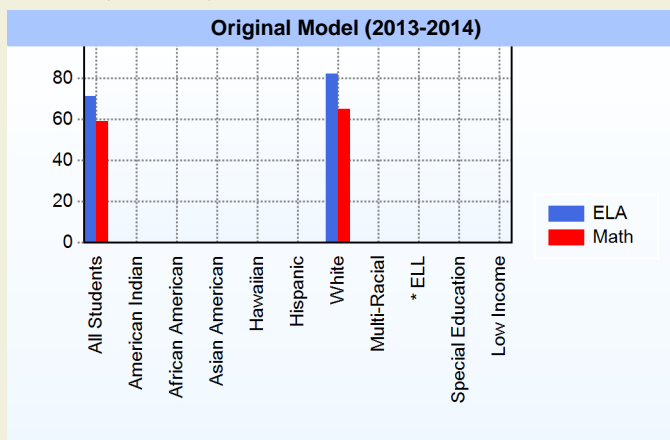
Graduation Rate - ESEA 4 Year Adjusted

	2015	2016
	<u>ESEA</u>	<u>ESEA</u>
All Students	76.9%	81.6%
African American	66.7%	77.4%
Asian American	100.0%	100.0%
Hawaiian	100.0%	
Hispanic	75.0%	100.0%
White	78.6%	79.6%
English Language Learner	33.3%	100.0%
Special Education	61.5%	76.9%
Low Income	69.6%	71.0%

AYP

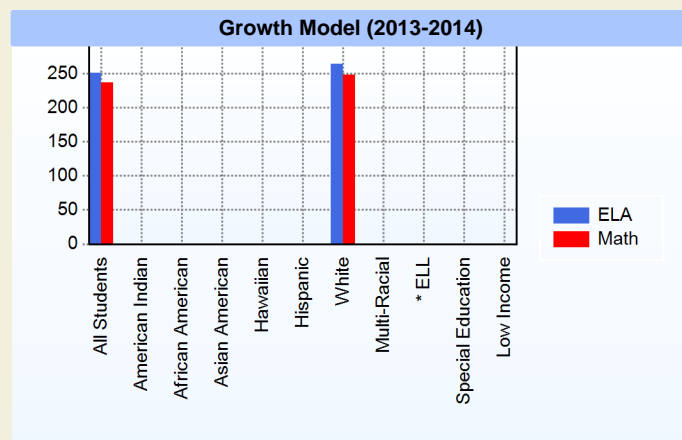
Only groups with greater than 40 students are reported

Original Model (2013-2014)



* English Language Learner

Growth Model (2013-2014)



* English Language Learner

% Test Participation (2013-2014)

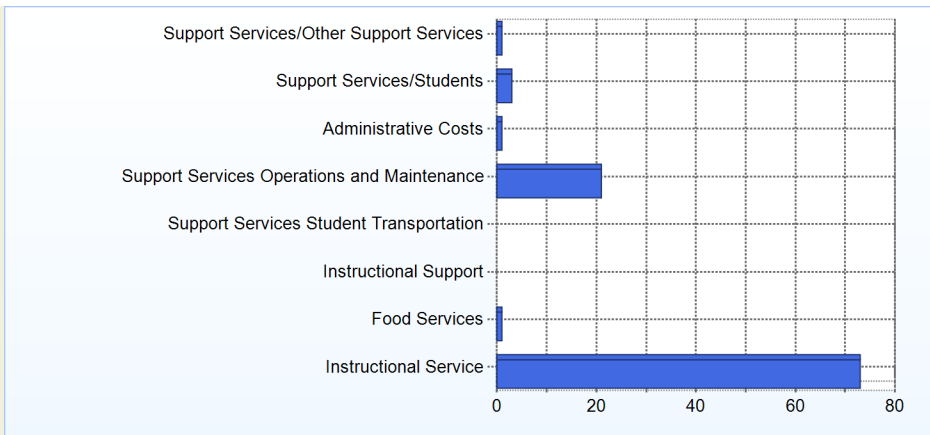
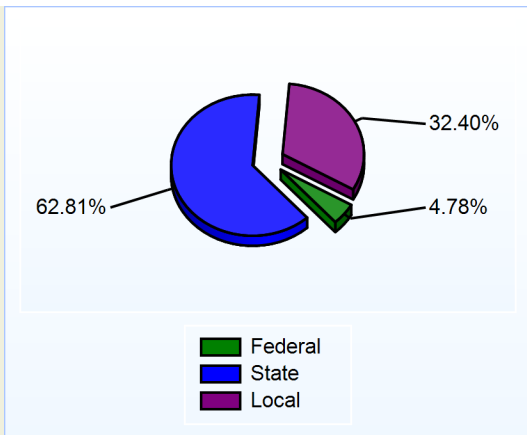
	<u>ELA</u>	<u>Math</u>	<u>ELA Goal</u>	<u>Math Goal</u>
All Students	100	100	95	95
American Indian	*	*	95	95
African American	*	*	95	95
Asian American	*	*	95	95
Hawaiian	*	*	95	95
Hispanic	*	*	95	95
White	100	100	95	95
Multi-Racial	*	*	95	95
English Language Learner	*	*	95	95
Special Education	*	*	95	95
Low Income	*	*	95	95

School Finances

District Expenditure per Pupil (2015-2016): \$13,212

District Sources of Revenue (2015-2016)

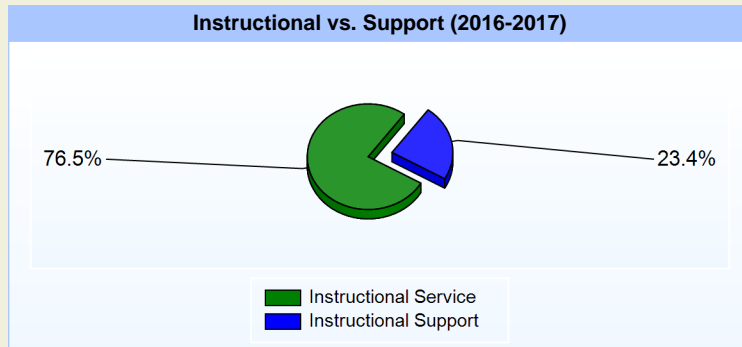
Percent District Allocation of Current Expenses by Category (2015-2016)



School Salary Allocation

Instructional Service	
2017	
Teachers	58.0%
Instructional Support	12.7%
Pupil Support	5.8%
Total	76.5%

Instructional Support	
2017	
Administration	5.5%
Secretaries	12.1%
Food Services	2.9%
Maintenance	2.9%
Total	23.4%



For further information and detailed reports, visit

<http://profiles.doe.k12.de.us>

or contact your local school district office.

Glossary: <http://profiles.doe.k12.de.us/glossary.aspx>



Delaware Department of Education

John G. Townsend Building
401 Federal Street, Suite #2
Dover, Delaware, 19901 - 3639
Phone: (302) 735-4000