



2019-2020 Delaware Dropout Summary



Report Prepared by:

Delaware Department of Education
401 Federal Street, Suite 2
Dover, Delaware 19901

Officers of the Department of Education

Susan Bunting, Secretary of Education
Christine Alois, Deputy Secretary
Emily Cunningham, Chief of Staff
Monica Gant, Academic Support
Kim Klein, Operations Support
Jon Neubauer, Educator Support
Michael Rodriguez, Student Support
Yvette Sanchez Fuentes, Early Childhood Support
James Simmons, Office of Equity and Innovation

The Department of Education is an equal opportunity employer. It does not discriminate on the basis of race, color, religion, national origin, sex, sexual orientation, gender identity, marital status, disability, age, genetic information, or veteran's status in employment or its programs and activities. Inquiries should be directed to the Department's Human Resource Officer, 401 Federal Street, Suite 2, Dover, Delaware 19901. Telephone Number: (302) 735-4030.

Ensuring Confidentiality of Individual Student Data

The Delaware Department of Education is legally required to protect the confidentiality of data that could be used to identify individual students. Legal requirements for protecting the data are detailed in the Family Education Rights and Privacy Act (FERPA) (20 U.S.C. § 1232G; 34 CFR Part 99). FERPA requires that these data be protected to ensure they cannot be used to identify the attributes of any individual student. Beyond the natural barriers to precise identification, including differential time frames and net transfer effects, additional disclosure mitigation methods have been applied to these data to ensure confidentiality.

Executive Summary

The Delaware Department of Education (DDOE) report on dropouts is from data collected annually. Delaware collects data from all public schools including grades 7 through 12, but calculates the yearly dropout rate from grades 9 through 12, as is prescribed by the National Center for Educational Statistics (NCES), which provides data to the federal reporting system.

In accordance with NCES requirements, Delaware uses the event dropout rate, which measures the proportion of students who drop out in a single school year. This is the rate the State has reported since 1994. See Appendix A for additional details about the dropout calculation.

This report does not contain data reflecting private or home school students in Delaware. The State does gather information from families that home school their children as well as from private schools, but only does so to verify the transfer of a student from public to private and home schools.

Highlights

- Last year, out of 42,734 students enrolled in grades 9-12, 560 students left school.
- The statewide annual dropout rate for school year 2019-2020 was 1.3%. This is flat from school year 2018-2019 when the dropout rate was also 1.3%.
- Of the 560 dropouts, 62.7% were male and 37.3% were female.
- The largest number of dropouts were from students enrolled in the 9th grade (174 students). Students enrolled in 12th grade represented the lowest proportion of students who dropped out (100 students).
- Academic, personal and economic reasons were cited by students as the reasons they dropped out.

Table 1
Dropout Summary Statistics
Dropout Rates of 9-12 Grade Students, School Years 2018-2020

| | 2017-2018 | | | 2018-2019 | | | 2019-2020 | | |
|----------------------------------|----------------|------------------|--------------|----------------|------------------|--------------|----------------|------------------|--------------|
| | Total Students | Dropout Students | Dropout Rate | Total Students | Dropout Students | Dropout Rate | Total Students | Dropout Students | Dropout Rate |
| <u>State Average</u> | 41,593 | 699 | 1.7% | 41,965 | 559 | 1.3% | 42,734 | 560 | 1.3% |
| <u>Gender</u> | | | | | | | | | |
| Female | 20,288 | 267 | 1.3% | 20,546 | 203 | 1.0% | 21,035 | 209 | 1.0% |
| Male | 21,305 | 432 | 2.0% | 21,419 | 356 | 1.7% | 21,700 | 351 | 1.6% |
| <u>Race/Ethnicity</u> | | | | | | | | | |
| African American | 13,138 | 258 | 2.0% | 13,208 | 205 | 1.6% | 13,276 | 205 | 1.5% |
| Asian American | * | * | 0.5% | * | * | 0.4% | * | * | 0.2% |
| Hispanic or Latino | 6,468 | 159 | 2.5% | 6,832 | 152 | 2.2% | 7,362 | 132 | 1.8% |
| Multi-Racial | * | * | 1.2% | * | * | 1.0% | * | * | 1.0% |
| Native American | * | * | 4.2% | * | * | 1.3% | * | * | 1.7% |
| Native Hawaiian/Pacific Islander | * | * | 2.0% | 49 | 0 | 0.0% | 47 | 0 | 0.0% |
| White | 19,156 | 253 | 1.3% | 18,949 | 183 | 1.0% | 18,684 | 201 | 1.1% |
| <u>Age</u> | | | | | | | | | |
| Less than 15 | * | * | 0.0% | * | * | 0.0% | * | * | 15.4% |
| Age 15 | * | * | 0.5% | * | * | 0.1% | * | * | 0.3% |
| Age 16 | 10,140 | 142 | 1.4% | 10,206 | 17 | 0.2% | 9,993 | 94 | 1.0% |
| Age 17 and over | 12,709 | 502 | 3.9% | 26,358 | 541 | 2.1% | 28,182 | 448 | 1.6% |

*Information suppressed to protect student privacy.

Figure 1
Delaware Dropout Summary Statistics, 10 Year History

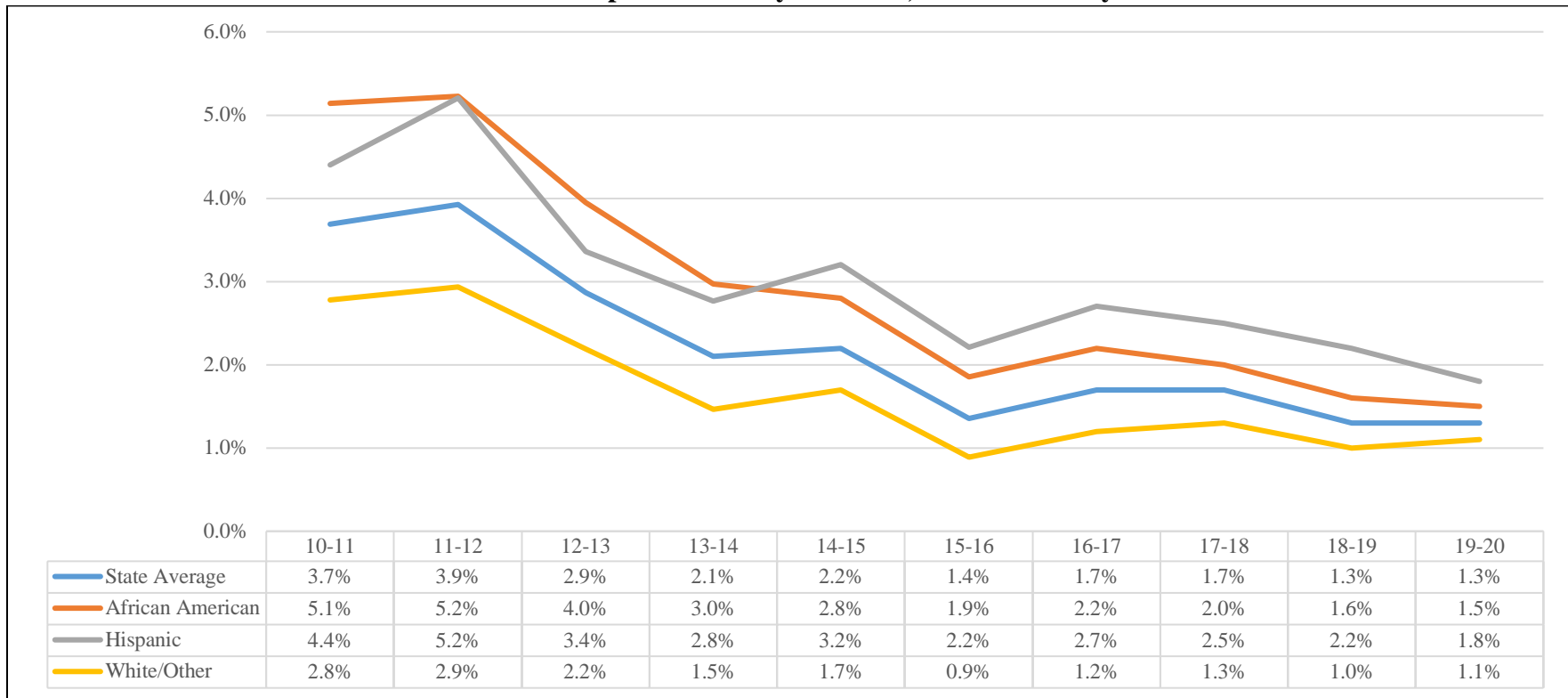


Table 2
Dropouts by Race and Grade, School Year 2019-2020

| Grade | African American | | | Hispanic or Latino | | | White/Other | | | All | | |
|--------------|------------------|------------------|--------------|--------------------|------------------|--------------|----------------|------------------|--------------|----------------|------------------|--------------|
| | Total Students | Dropout Students | Dropout Rate | Total Students | Dropout Students | Dropout Rate | Total Students | Dropout Students | Dropout Rate | Total Students | Dropout Students | Dropout Rate |
| 9 | 4,011 | 66 | 1.6% | 2,342 | 57 | 2.4% | 5,963 | 51 | 0.9% | 12,316 | 174 | 1.4% |
| 10 | 3,460 | 50 | 1.4% | 1,830 | 33 | 1.8% | 5,618 | 61 | 1.1% | 10,908 | 144 | 1.3% |
| 11 | 2,927 | 51 | 1.7% | 1,681 | 26 | 1.5% | 5,355 | 65 | 1.2% | 9,963 | 142 | 1.4% |
| 12 | 2,878 | 38 | 1.3% | 1,509 | 16 | 1.1% | 5,160 | 46 | 0.9% | 9,547 | 100 | 1.0% |
| Total | 13,276 | 205 | 1.5% | 7,362 | 132 | 1.8% | 22,096 | 223 | 1.0% | 42,734 | 560 | 1.3% |

Figure 2
Number of Dropouts by Race and Grade, School Year 2019-2020

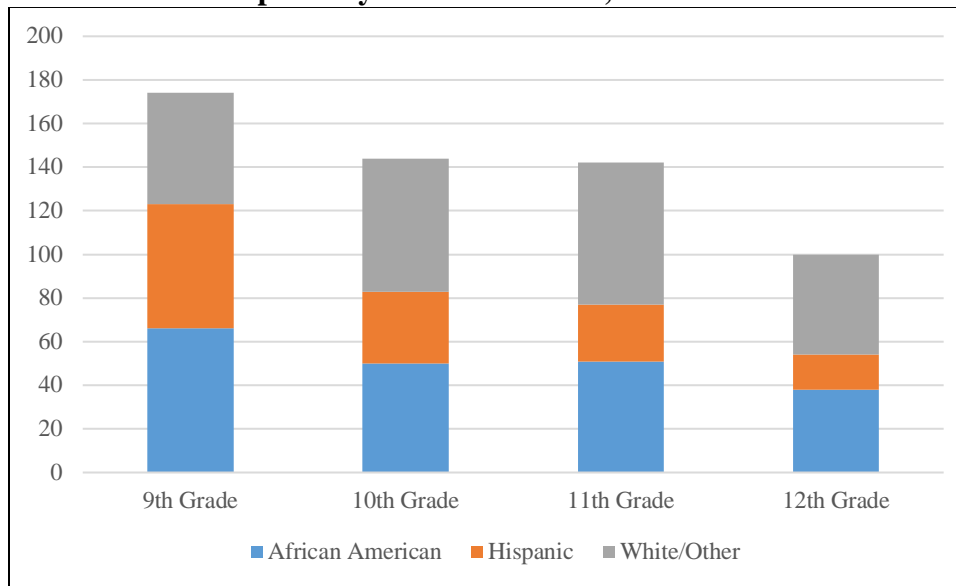


Table 3
Dropouts by Race and Gender, School Year 2019-2020

| Gender | African American | | | Hispanic or Latino | | | White/Other | | | All | | |
|--------------|------------------|------------------|--------------|--------------------|------------------|--------------|----------------|------------------|--------------|----------------|------------------|--------------|
| | Total Students | Dropout Students | Dropout Rate | Total Students | Dropout Students | Dropout Rate | Total Students | Dropout Students | Dropout Rate | Total Students | Dropout Students | Dropout Rate |
| Male | 6,611 | 78 | 1.2% | 3,588 | 43 | 1.2% | 10,836 | 88 | 0.8% | 21,035 | 209 | 1.0% |
| Female | 6,665 | 127 | 1.9% | 3,774 | 89 | 2.4% | 11,260 | 135 | 1.2% | 21,699 | 351 | 1.6% |
| Total | 13,276 | 205 | 1.5% | 7,362 | 132 | 1.8% | 22,096 | 223 | 1.0% | 42,734 | 560 | 1.3% |

Figure 3
Number of Dropouts by Race and Gender, School Year 2019-2020

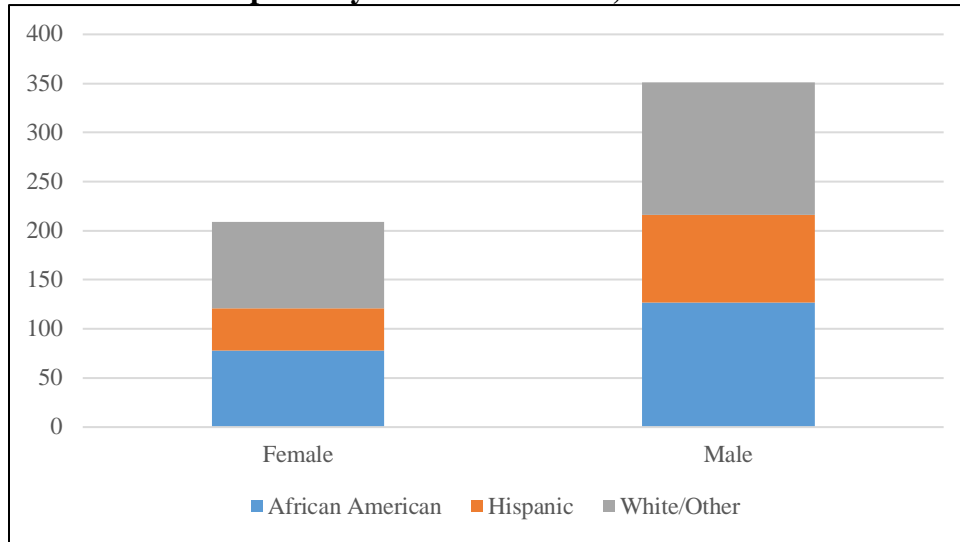


Table 4
Dropout Summary by County, School Years 2018-2020

| County | 2017-2018 Dropout Rate | 2018-2019 Dropout Rate | 2019-2020 Dropout Rate |
|------------|------------------------------|------------------------------|------------------------------|
| New Castle | 1.5% | 1.0% | 1.0% |
| Kent | 1.6% | 1.5% | 1.4% |
| Sussex | 2.2% | 2.1% | 1.9% |

Figure 4
Dropout Summary by County, School Years 2018-2020

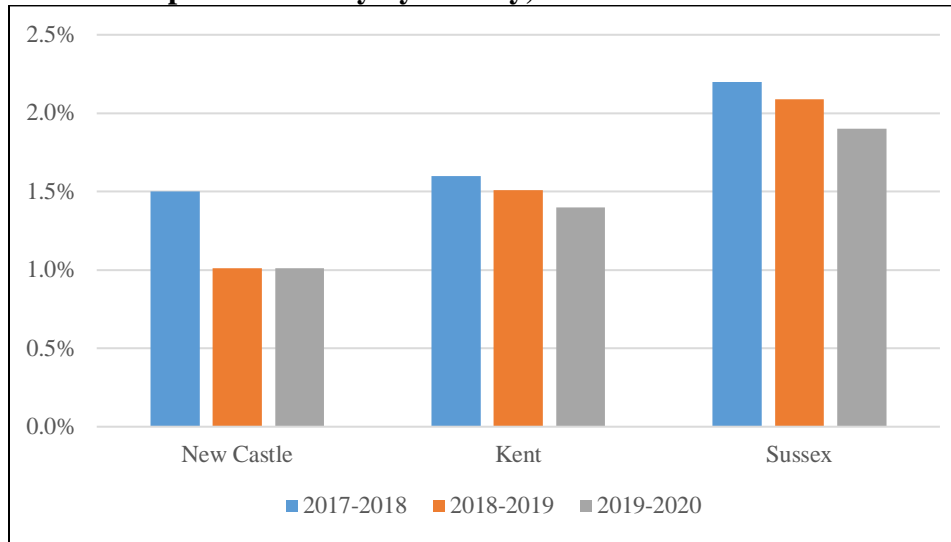


Table 5
Reasons for Dropping Out, School Year 2019-2020

| Reason | Number | Percent |
|-------------------------------------|------------|-------------|
| School-Related | 11 | 2.0% |
| Economic-Related | 50 | 8.9% |
| Personal | 52 | 9.3% |
| School/District Did Not Report Data | 447 | 45.6% |
| Total | 560 | 100% |

Figure 5
Reasons for Dropping Out, School Year 2019-2020

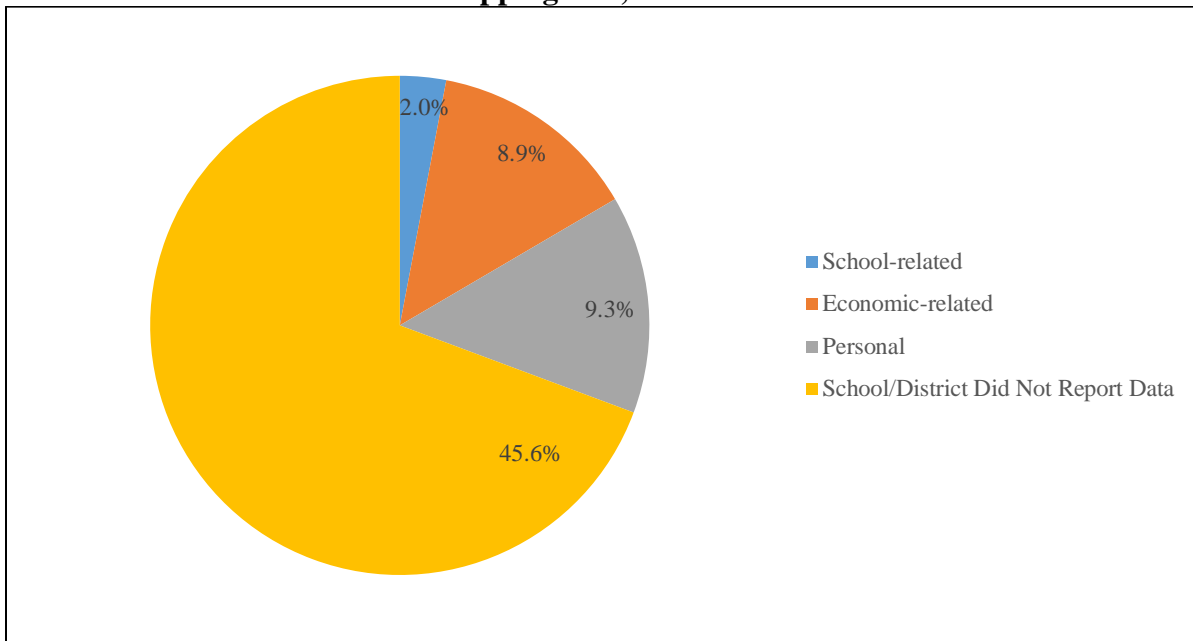
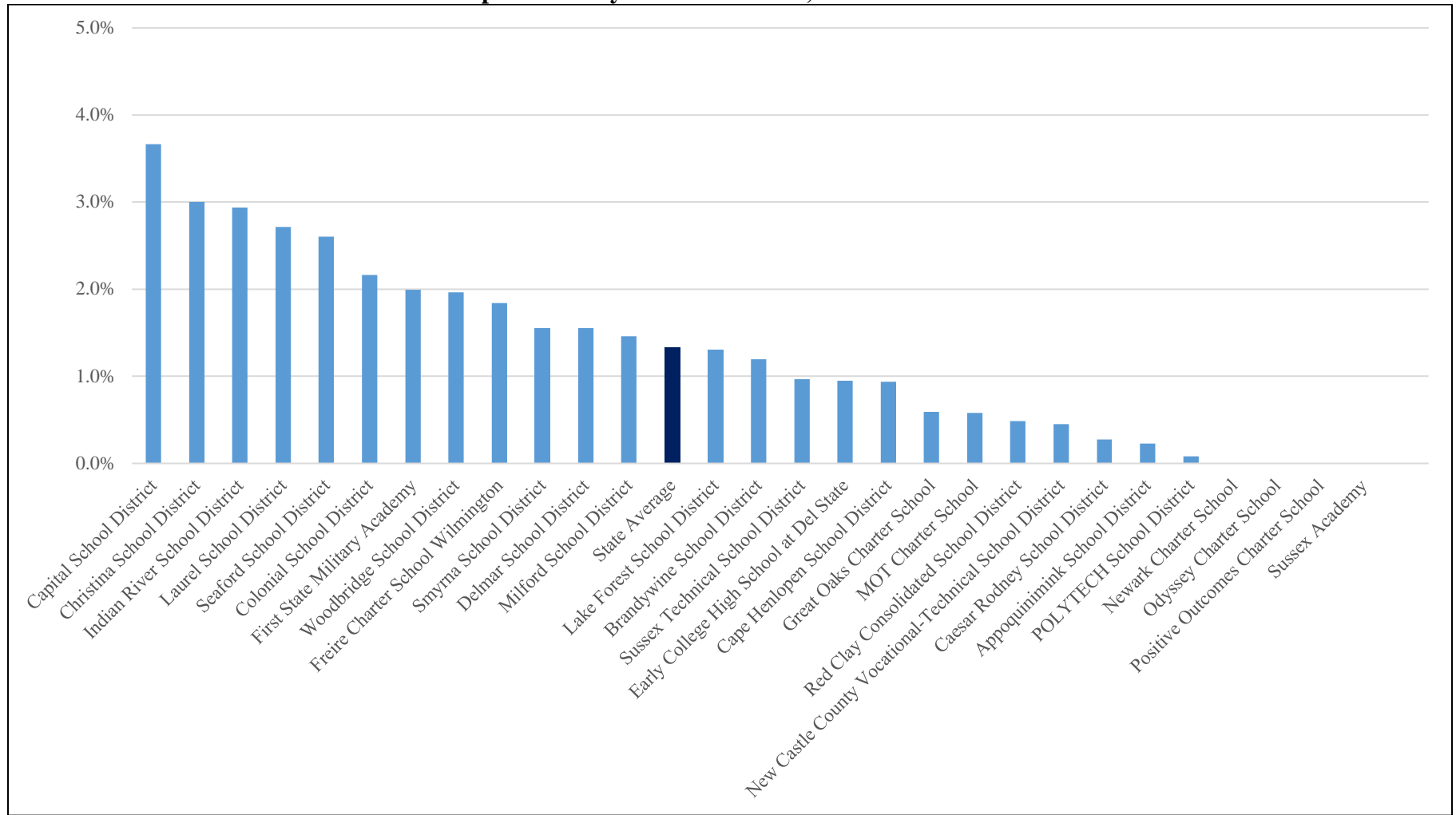


Table 6
Annual Dropout Rate by District/Charter, School Years 2018-2020

| District/Charter | 2017-2018 Dropout Rate | 2018-2019 Dropout Rate | 2019-2020 Dropout Rate |
|---|------------------------------|------------------------------|------------------------------|
| Appoquinimink School District | 0.5% | 0.2% | 0.2% |
| Brandywine School District | 1.6% | 1.7% | 1.2% |
| Caesar Rodney School District | 0.9% | 0.9% | 0.3% |
| Cape Henlopen School District | 1.2% | 1.8% | 0.9% |
| Capital School District | 3.4% | 3.2% | 3.7% |
| Christina School District | 4.4% | 1.6% | 3.0% |
| Colonial School District | 2.9% | 1.3% | 2.2% |
| Delmar School District | 0.6% | 1.5% | 1.6% |
| Early College High School at Del State | 0.0% | 0.3% | 1.0% |
| First State Military Academy | 1.5% | 2.1% | 2.0% |
| Freire Charter School | 0.7% | 0.3% | 1.8% |
| Great Oaks Charter School | 0.0% | 0.0% | 0.6% |
| Indian River School District | 2.7% | 2.7% | 2.9% |
| Lake Forest School District | 2.7% | 1.2% | 1.3% |
| Laurel School District | 3.3% | 3.7% | 2.7% |
| Milford School District | 2.6% | 2.6% | 1.5% |
| MOT Charter School | 0.2% | 0.0% | 0.6% |
| New Castle County Vocational-Technical School | 0.5% | 0.3% | 0.4% |
| Newark Charter School | 0.0% | 0.0% | 0.0% |
| Odyssey Charter School | 0.0% | 0.0% | 0.0% |
| POLYTECH School District | 0.1% | 0.2% | 0.1% |
| Positive Outcomes Charter School | 4.5% | 3.5% | 0.0% |
| Red Clay Consolidated School District | 0.8% | 1.6% | 0.5% |
| Seaford School District | 2.6% | 2.5% | 2.6% |
| Smyrna School District | 1.1% | 1.4% | 1.6% |
| Sussex Academy | 0.3% | 0.0% | 0.0% |
| Sussex Technical School District | 1.0% | 0.2% | 1.0% |
| Woodbridge School District | 4.8% | 2.5% | 2.0% |

Notes: • Red Clay Consolidated School District includes Charter School of Wilmington and Delaware Military Academy.
• Special Schools and ILCs are included in district dropout summary statistics.

Figure 6
Annual Dropout Rate by District/Charter, School Year 2019-2020



**Table 7
Annual Dropout Rate by School, School Years 2018-2020**

| High Schools | 17-18 Dropout Rate | 18-19 Dropout Rate | 19-20 Dropout Rate |
|--|--------------------------|--------------------------|--------------------------|
| A. I. duPont High | 0.6% | 3.0% | 1.9% |
| Appoquinimink High School | 0.7% | 0.1% | 0.1% |
| Brandywine High School | 2.5% | 3.3% | 1.2% |
| Brennen School (The) | 0.0% | 0.0% | 0.0% |
| Caesar Rodney High School | 0.9% | 0.8% | 0.2% |
| Calloway (Cab) School of the Arts | 0.0% | 0.0% | 0.0% |
| Cape Henlopen High School | 1.2% | 1.8% | 1.0% |
| Charter School of Wilmington | 0.1% | 0.0% | 0.0% |
| Christiana High School | 4.1% | 2.7% | 6.6% |
| Concord High School | 1.4% | 1.0% | 0.9% |
| Conrad Schools of Science | 0.0% | 0.0% | 0.0% |
| Delaware Military Academy | 0.2% | 0.2% | 0.0% |
| Delaware School for the Deaf School (DSD) | 0.0% | 0.0% | 0.0% |
| Delcastle Technical High School | 0.8% | 0.3% | 0.6% |
| Delmar High School | 0.6% | 1.5% | 1.6% |
| Dickinson (John) School | 4.3% | 5.9% | 0.5% |
| Dover High School | 2.7% | 2.8% | 2.8% |
| Early College High School at Del State | 0.0% | 0.3% | 1.0% |
| Ennis (Howard T.) School | 0.0% | 1.7% | 1.8% |
| First State Military Academy | 1.5% | 2.1% | 2.0% |
| First State School | 0.0% | 0.0% | 9.1% |
| Freire Charter School | 0.7% | 0.3% | 1.8% |
| Glasgow High School | 2.9% | 1.7% | 3.5% |
| Great Oaks Charter School | 0.0% | 0.0% | 0.6% |
| Hodgson (Paul M.) Vocational Technical High School | 0.4% | 0.2% | 0.4% |
| Howard High School of Technology | 0.9% | 0.7% | 0.8% |
| Indian River High School | 1.8% | 2.0% | 1.9% |
| John S. Charlton School | 0.0% | 3.1% | 2.0% |
| Kent County Community School | 1.8% | 3.6% | 31.8% |
| Kent County Secondary | 21.6% | 14.3% | 0.0% |
| Lake Forest High School | 2.7% | 1.2% | 1.3% |

| High School | 17-18 Dropout Rate | 18-19 Dropout Rate | 19-20 Dropout Rate |
|-----------------------------------|--------------------------|--------------------------|--------------------------|
| Laurel Senior High School | 3.3% | 3.7% | 2.7% |
| Leach (John G.) School | 0.0% | 0.0% | 0.0% |
| McKean (Thomas) High School | 0.8% | 2.6% | 0.7% |
| Meadowood Program | 0.0% | 0.0% | 0.0% |
| Middletown High School | 0.3% | 0.2% | 0.4% |
| Milford Senior High School | 2.7% | 2.6% | 1.5% |
| MOT Charter School | 0.2% | 0.0% | 0.6% |
| Mount Pleasant High School | 1.2% | 1.2% | 1.5% |
| Newark Charter School | 0.0% | 0.0% | 0.0% |
| Newark High School | 4.6% | 1.5% | 1.4% |
| Odyssey Charter School | 0.0% | 0.0% | 0.0% |
| Penn (William) High School | 2.3% | 1.1% | 1.5% |
| POLYTECH High School | 0.1 | 0.2% | 0.1% |
| Positive Outcomes Charter School | 4.5% | 3.5% | 0.0% |
| Seaford Senior High School | 2.6% | 2.5% | 2.7% |
| Smyrna High School | 1.1% | 1.4% | 1.6% |
| St. Georges Technical High School | 0.0% | 0.0% | 0.1% |
| Sussex Academy | 0.3% | 0.0% | 0.0% |
| Sussex Central High School | 3.0% | 3.1% | 3.5% |
| Sussex Consortium | 1.2% | 1.0% | 0.0% |
| Sussex Technical High School | 1.0% | 0.2% | 1.0% |
| Wallace Wallin School | 16.3% | 5.6% | 16.1% |
| Woodbridge High School | 4.8% | 2.5% | 2.0% |

Notes: • Special Schools and ILCs are included in district dropout summary statistics.

Table 8
Students with Disabilities Dropout Summary Statistics, School Years 2018-2020

| Race/Ethnicity | 2017-2018 | | | 2018-2019 | | | 2019-2020 | | |
|------------------|----------------|---------------|--------------|----------------|---------------|--------------|----------------|---------------|--------------|
| | Total Enrolled | Total Dropout | Dropout Rate | Total Enrolled | Total Dropout | Dropout Rate | Total Enrolled | Total Dropout | Dropout Rate |
| African American | 2,714 | 72 | 2.7% | 2,732 | 64 | 2.3% | 2,837 | 56 | 2.0% |
| Hispanic | 894 | 21 | 2.3% | 973 | 15 | 1.5% | 1,055 | 16 | 1.5% |
| White/Other | 2,861 | 75 | 2.6% | 2,909 | 56 | 1.9% | 2,975 | 72 | 2.4% |
| Total | 6,469 | 168 | 2.6% | 6,614 | 135 | 2.0% | 6,867 | 144 | 2.1% |

Figure 7
Students with Disabilities Dropout Summary Statistics, School Years 2018-2020

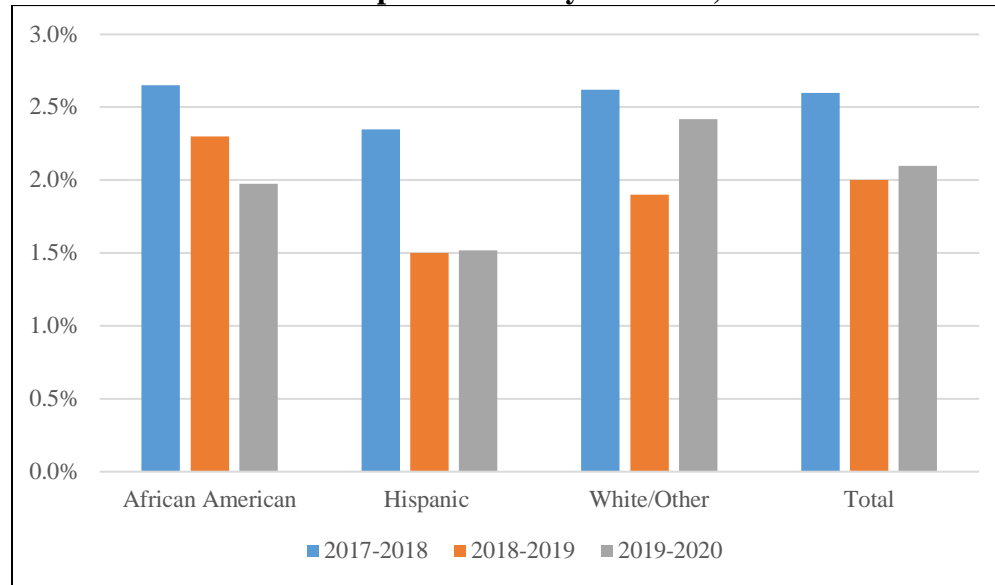
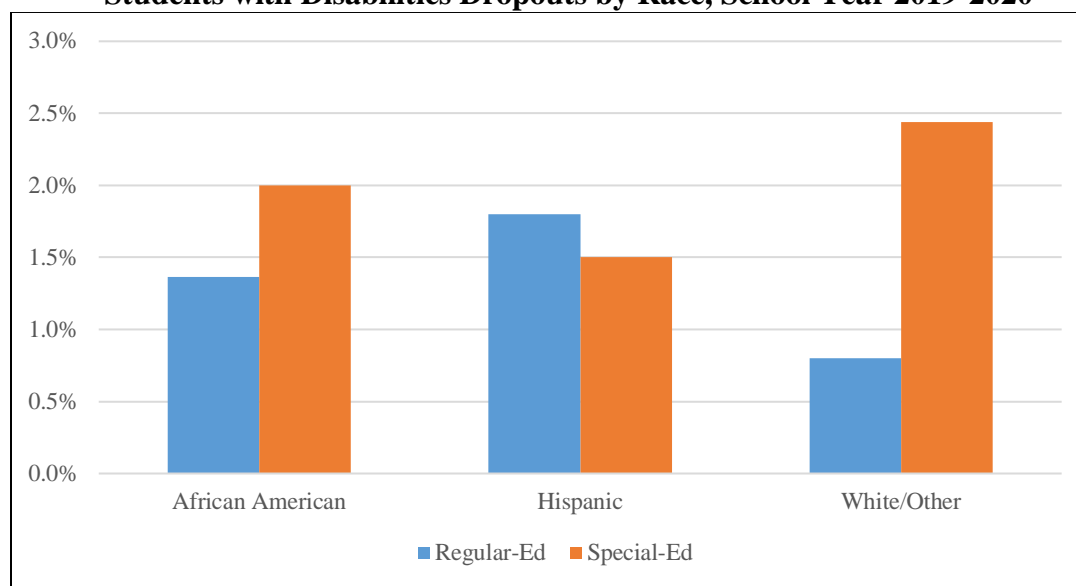


Table 9
Students with Disabilities Dropouts by Race, School Year 2019-2020

| | African American | | | Hispanic or Latino | | | White/Other | | | All | | |
|--------------|------------------|------------------|--------------|--------------------|------------------|--------------|----------------|------------------|--------------|----------------|------------------|--------------|
| | Total Students | Dropout Students | Dropout Rate | Total Students | Dropout Students | Dropout Rate | Total Students | Dropout Students | Dropout Rate | Total Students | Dropout Students | Dropout Rate |
| Regular-Ed | 10,439 | 149 | 1.4% | 6,307 | 116 | 1.8% | 19,121 | 151 | 0.8% | 35,867 | 416 | 1.2% |
| Special-Ed | 2,837 | 56 | 2.0% | 1,055 | 16 | 1.5% | 2,975 | 72 | 2.4% | 6,867 | 144 | 2.1% |
| Total | 13,276 | 205 | 1.5% | 7,362 | 132 | 1.8% | 22,096 | 223 | 1.0% | 42,734 | 560 | 1.3% |

Figure 8
Students with Disabilities Dropouts by Race, School Year 2019-2020



Appendix A

Criteria for being identified as a dropout:

- A student who completed the previous school year and who did not reach his or her 16th birthday by the beginning of the current school and did not attend any days of the current school year is considered dropout underage from the receiving school. This student should be coded in eSchoolPLUS as Dropout-Underage. This underage dropout should have a withdrawal date that is the same as the entry date (i.e., first day of school of the reporting year).
- A student who completed the previous school year and who did reach his or her 16th birthday by the beginning of the current school and did not attend any days of the current school year is considered "dropout-truancy" from the receiving school. This student should be coded in eSchoolPLUS as Dropout-Truancy. This dropout should have a withdrawal date that is the same as the entry date (i.e., first day of school of the reporting year).
- If a student has moved and there is no official documentation that he or she has transferred to another school, he or she is counted as a dropout and code in eSchoolPLUS as DropoutUnderage or Dropout-Truancy depending on age.
- A student who transfers to James H. Groves Adult High School during the current school year and is not in attendance (enrolled) by September 30 of the next school year, is counted as Dropout-Academic from the home school.
- A student who transfers to James H. Groves Adult Basic Education (ABE) programs during the current school year is counted as Dropout-Academic from the home school.
- An expelled student is counted as a dropout if he or she does not return at the end of the disciplinary period. This student should be coded in eSchoolPLUS as Dropout-Behavior.
- A school leaver who has joined the military is counted as a dropout. This student should be coded in eSchoolPLUS as Dropout-Military.
- A school leaver who has joined Job Corps is counted as a dropout. This student should be coded in eSchoolPLUS as Dropout-Employment.
- A student withdrawn because of truancy is counted as a dropout. This student shall be coded in eSchoolPLUS as Dropout-Underage or Dropout- Truancy depending on age. (A student with an active truancy case with the Justice of the Peace Court shall not be withdrawn from eSchoolPLUS.)

Criteria for not being identified as a dropout:

- A student who remains enrolled in a public school in the State.
- A student who receives a diploma or in the case of a special education student a district or charter school issued Certificate, or a diploma of alternate achievement standards should not be reported as a dropout.
- A student who transfers to another public or private school should not be reported as a dropout. Documentation of transfer needs to be preserved.
- A student who moves out of state should not be reported as a dropout. Documentation of the move needs to be preserved.
- A students who dies should not be reported as a dropout.
- A school leaver who is in a correctional institution or other state agency placement should not be counted as a dropout.
- A student who leaves the United States is not considered to be a dropout even if the school district cannot document the student's subsequent enrollment in school.