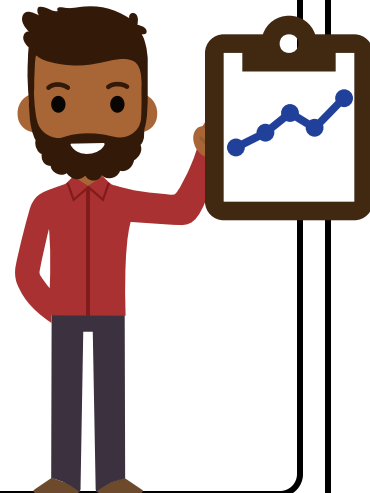


DE-MTSS Essential Component: Data-Based Decision Making

Data-based decision making is a process that uses all data relevant to the whole child to make informed decisions about academic and nonacademic instruction and supports. Data are used at multiple levels of the system to (a) guide the selection and implementation of core instruction and evidence-based intervention, (b) understand student responsiveness, and (c) determine the adaptation of intervention for students requiring additional supports. Data-based decision making requires a team approach to collect all applicable data and analyze, evaluate, and plan for improvement while engaging families throughout the process.

Data-based decision making:

- Ensures that all students have an appropriately challenging and culturally relevant learning environment.
- Involves a variety of data sources (e.g., screening, diagnostic, progress monitoring, fidelity, and outcome assessments) to understand individual and group strengths and needs, how systems operate, and how practices are implemented.
- Occurs on an ongoing basis throughout the school year to evaluate the effectiveness of core instruction and universal supports, Tier 2 and Tier 3 interventions and practices, and school- or districtwide MTSS implementation.
- Includes an integrated approach to academic and nonacademic data to ensure that all student needs are considered when developing and implementing instruction, intervention, and supports.



Example Implementation Actions*

- Analyze schoolwide data (e.g., fidelity data, aggregated student assessment data, school discipline data) monthly to determine the effectiveness of instruction and practices across the tiers.
- Analyze student-level screening data at least three times per school year to determine which students require additional supports (i.e., Tier 2 or Tier 3 interventions) and identify students who would benefit from planned enrichment opportunities and activities.
- Review grade-level or content area data monthly to identify if changes are needed to core instruction and supports.

*Refer to the [DE-MTSS regulations](#) for more information.

