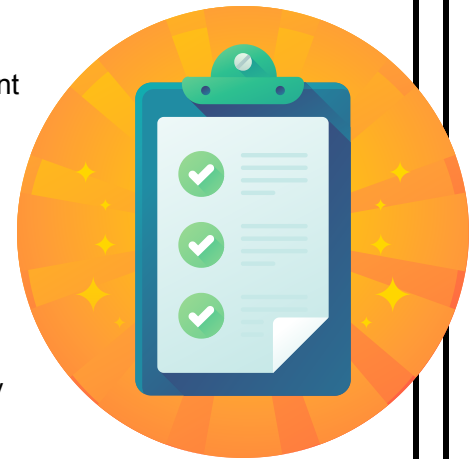


DE-MTSS Essential Component: Comprehensive Assessment System

A comprehensive assessment system uses a balance of formative and summative assessments, including screening, diagnostic, and progress monitoring measures, each being valid and reliable for its intended purpose and administered at specific intervals or as needed. All assessments within the system help educators make informed instructional and programmatic decisions based on the strengths and needs of the whole child, while providing families with regular updates on student progress.

A comprehensive assessment system:

- Produces actionable data to evaluate the effectiveness of programs and the extent to which students are progressing toward academic and nonacademic goals.
- Includes both informal assessments and processes (e.g., analysis of existing progress monitoring data) and formal tools (e.g., norm-referenced tools).
- Informs programmatic decisions about core instruction and universal practices and interventions.
- Provides information to support the identification of students who may be at risk for academic and nonacademic difficulties.
- Informs student-level problem solving for students identified as at risk, which may include collecting and analyzing diagnostic data.



Example Implementation Actions*

- Use a universal screening process within the first four weeks of the school year or the student's entry into school to identify students at risk for academic and nonacademic difficulties.
- Conduct a second stage of screening to increase the likelihood that students identified as at risk in the first stage of the process are in need of additional interventions and supports.
- Use progress monitoring to determine if students receiving intervention are responding to instruction and supports across tiers.
- Use diagnostic and functional assessments to determine specific areas of need for individuals receiving intervention and identify strategies to intensify their intervention.
- Conduct universal screening at least three times during the school year.



*Refer to the [DE-MTSS regulations](#) for more information.