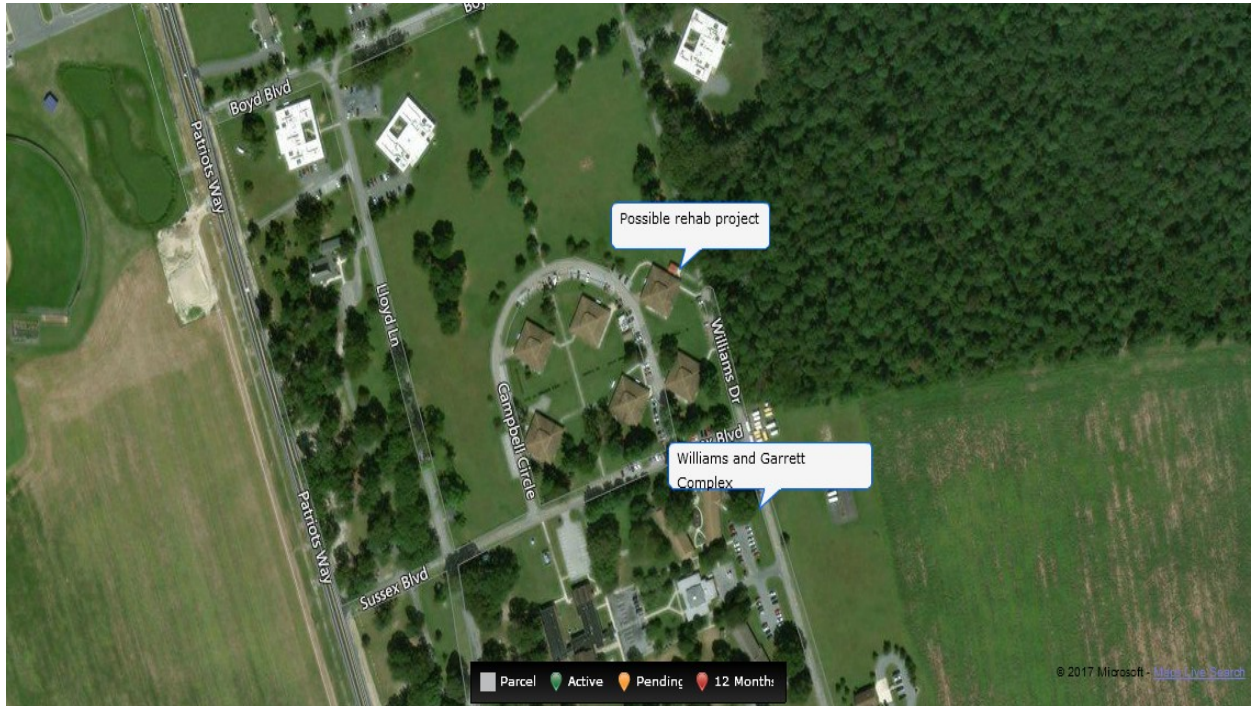
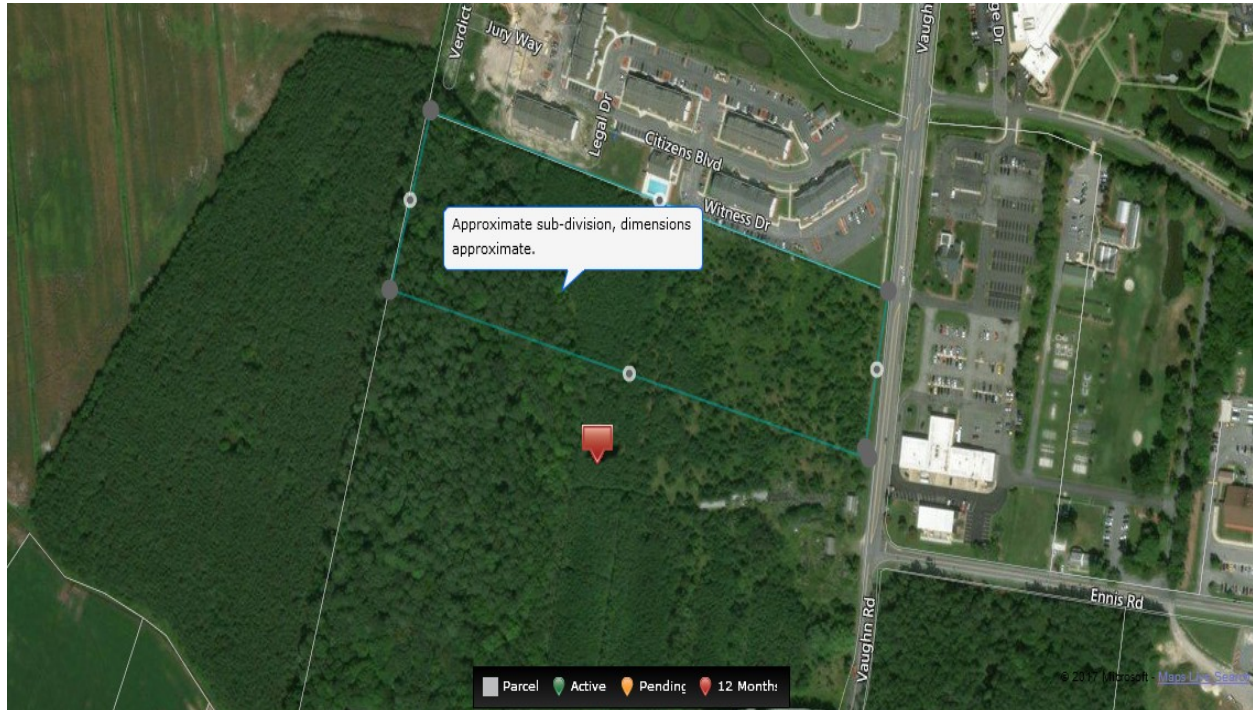
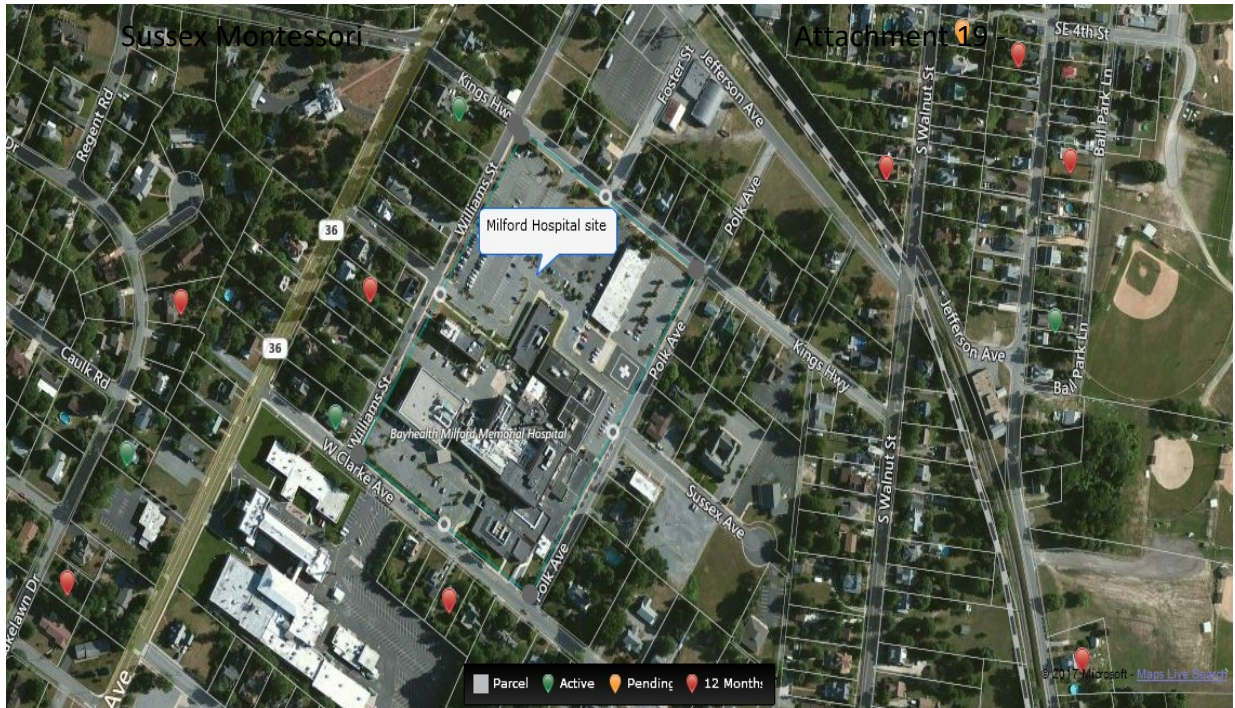


SMS Potential Site #1 - Described in Section 1.9 Facilities Question 2b.

Located on a publicly managed 750-acre campus roughly halfway between Georgetown and Millsboro just off of Route 113. The site is close to other buildings serving public needs, is well maintained, all utilities are present and electrical service is provided underground. The existing road network provides easy access to the site. The campus has excellent access to a 307-acre nature preserve. The site consists of a several buildings that could be re-purposed to create a Sussex Montessori School Campus. Funds secured from the Longwood Foundation and financing through NCALL (Letters in Attachment 15) will support the renovation work for this site. Preliminary conversations have been held regarding this site. Please see application section 1.9 for more details.

SMS Potential Site #2 - Described in Section 1.9 Facilities Question 2b.

Site 2 is non-developed land centrally located in Georgetown. The roadways in the area provide for easy access with water and sewer connections existing close by. This property provides an opportunity to create gardens and a campus in a natural setting supporting the Montessori curriculum. Located between routes 113 and 13, this property is easily accessible for families in Western Sussex County, (a target audience). The school would begin with modular units on this site. Funds secured from the Longwood Foundation (Letters in Attachment 15) would support site improvements and installation costs. Please see application section 1.9 for more details.

SMS Potential Site #3 - Described in Section 1.9 Facilities Question 2b

Site #3 - This site, located further north in Sussex County is still accessible to county residents. This would be a re- purposing of a facility being developed by Nationwide Health Care Services. This site has a building that has been targeted for educational purposes. It is a potential site for the first years of the school if sites 1 and 2 do not materialize as viable options. Funds secured from the Longwood Foundation and financing through NCALL (Letters in Attachment 15) will support the renovation work for this site. Preliminary conversations have been held with Nationwide representatives (letter in Attachment 15). Please see application section 1.9 for more details.