

DELAWARE READINESS TEAMS

# Delaware Parent Survey Results

July 29, 2020



DELAWARE READINESS TEAMS

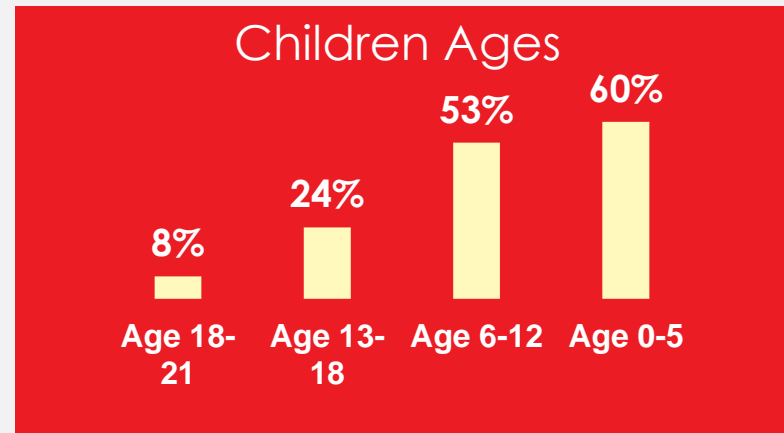
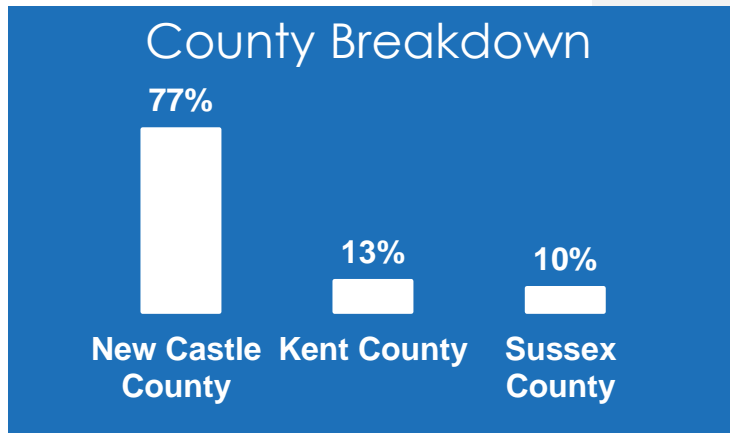
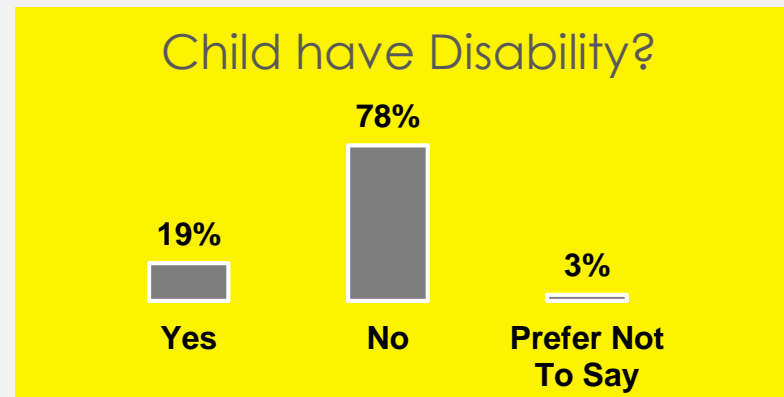
# About the Delaware Parent Survey



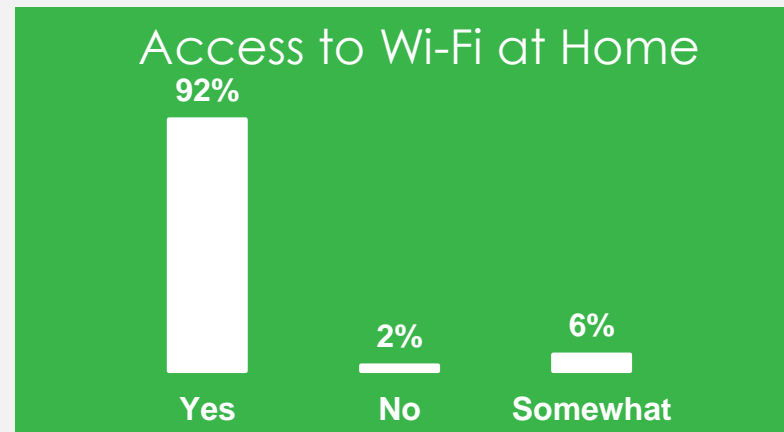
DELAWARE READINESS TEAMS

- Parents, caregivers and families are dealing with a lot during the COVID-19 crisis, and many questions remain about the summer and fall.
- More than 1,000 Delaware parents shared their thoughts on COVID-19, including appraisals of the just-concluded spring semester, as well as their concerns about returning to classrooms in the fall. Parents weighed in on topics ranging from childcare to health screenings to economic stress.
- This non-scientific survey was distributed through email and social media between May 26 and June 22. Governor Carney's initial Declaration of a State of Emergency was March 12.
- The survey aimed to gather information from parents so Rodel, the Delaware Readiness Teams, and our partners can better serve families during and after the crisis.

# Survey Demographics

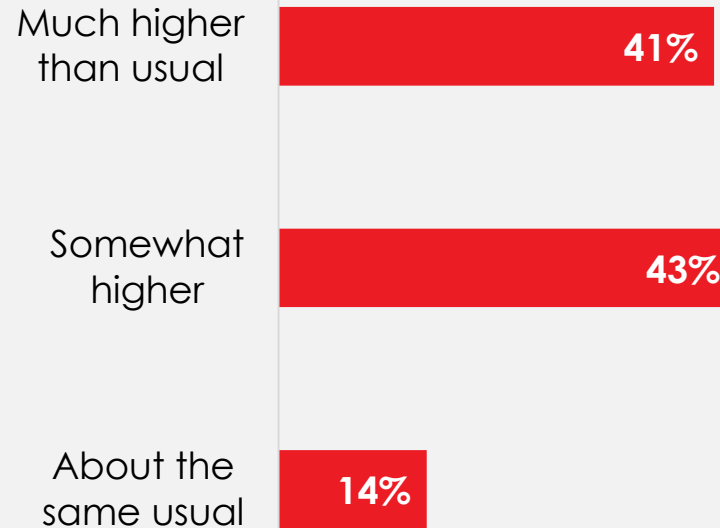


DELAWARE READINESS TEAMS



# Parents are More Stressed than Usual

## Stress Level As a Parent

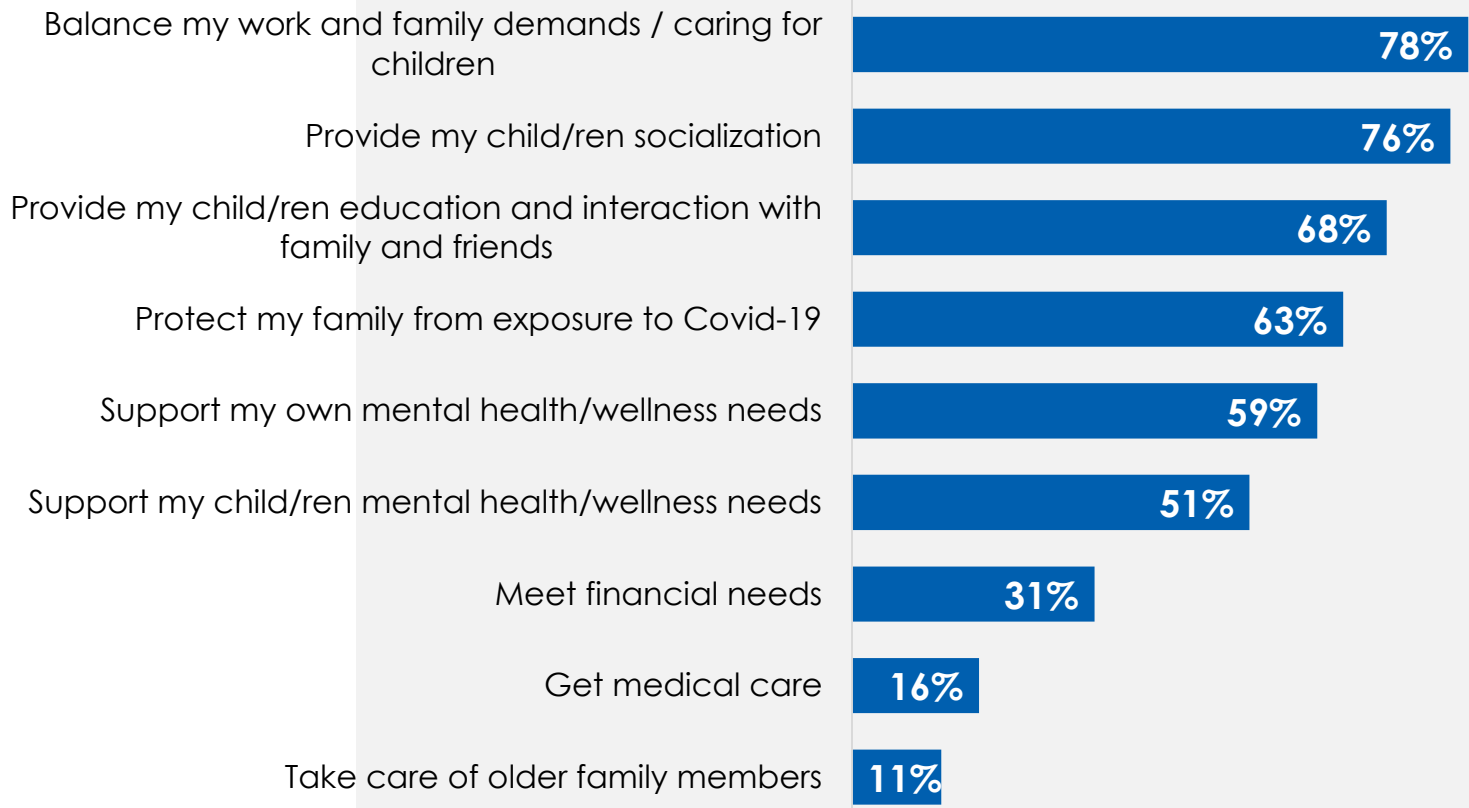


**84%** of parents of children ages **0-5** reported their stress level was much higher than usual or somewhat higher than usual



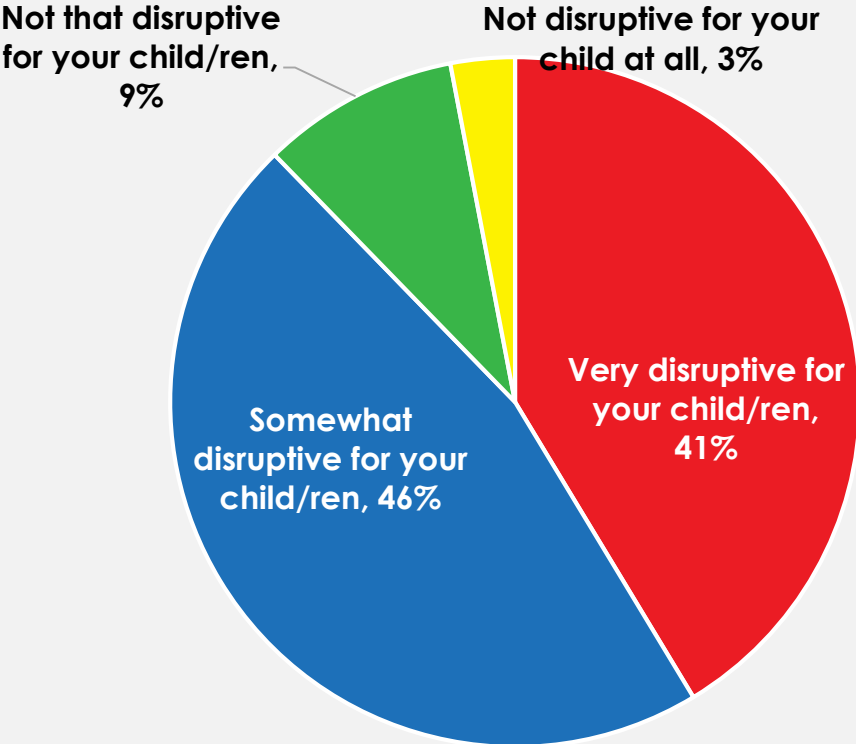
# Parent Concerns Ages 0- 5

What are your biggest concerns not being able to (select all that apply)



# Changes to Family Routines

Would you say the changes to your routine as a result of the COVID-19 crisis have been



**87% of parents** of children ages 0-5 say changes to their routine have been very or somewhat disruptive for their children



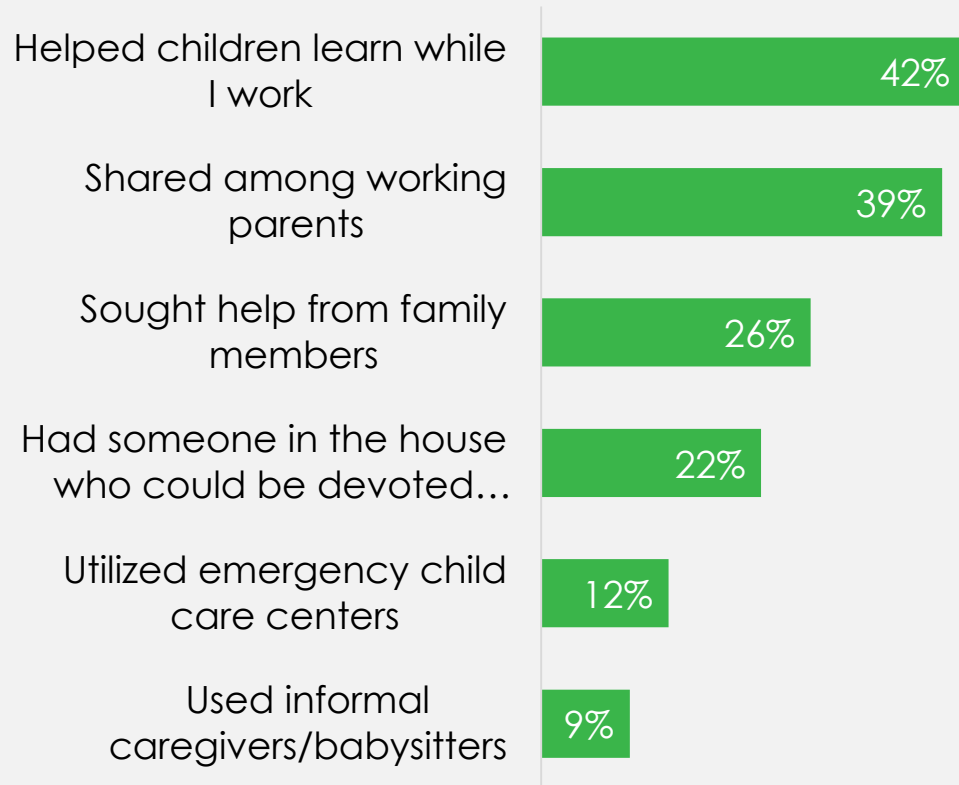
# How Are Parents Managing Childcare?

Since March, parents have had to find creative ways to care for their children.



DELAWARE READINESS TEAMS

## How have you managed caring for your children since March?



**42% of parents** of children ages 0-5 have had to help their children learn while working

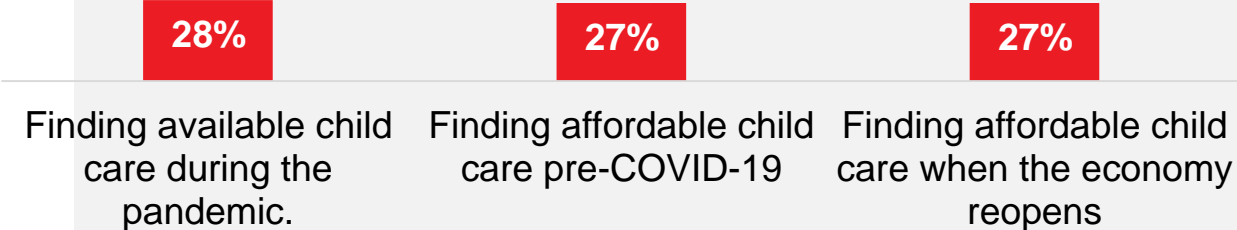


# Childcare Remains a Concern for Families

**More than a quarter of parents (28%) said finding available childcare during the pandemic was somewhat or very difficult.** Similarly finding affordable childcare was noted by 27% of parents as somewhat or very difficult both pre-COVID-10 and when the economy opens.

Rate how challenging the following has been for you and your family.

■ Somewhat or very difficult



# What Would Be the Impact on Your Household if Your Most Recent Childcare Provider Were Not Open When You were Expected to Return to Work?

**“I wouldn’t be able to work. I need reliable childcare to keep my job.”**

**“Children not being able to play and have attention devoted to social interaction with other children.”**

**“Devastating.”**

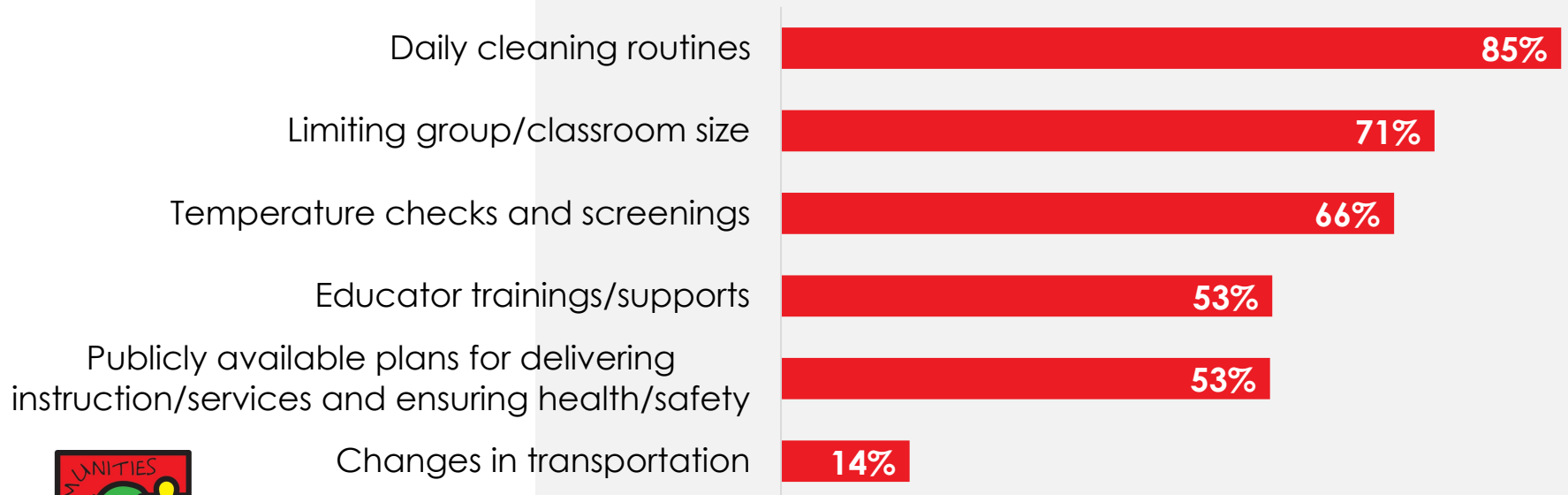
**“Would need to scramble to find a new arrangement. Unfortunately my perception is that high quality affordable childcare availability was already limited.”**

**“My husband and I would continue to work from home and struggle to keep our children active and supported throughout the day.”**

**“Son would be sitting home all day being unproductive.”**

# What Would Make Parents Comfortable to Return to School?

What would make you comfortable before sending your child/ren to child care, camp, or school? (Select all that apply)

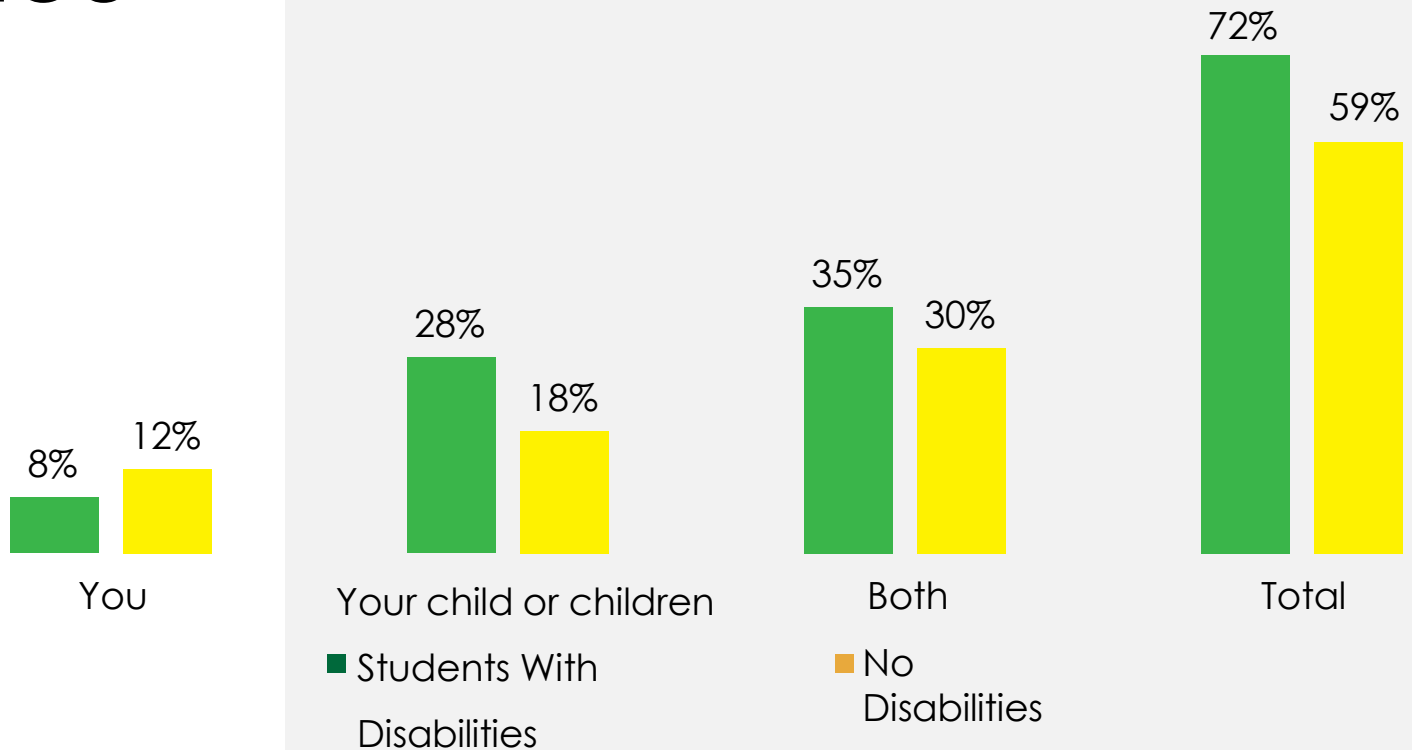


# Missed Health Checkup or Service

Parents of students with disabilities were more than 50% more likely to report that their child(ren) missed health check-ups, medical services, or medications or home visiting services during the pandemic.

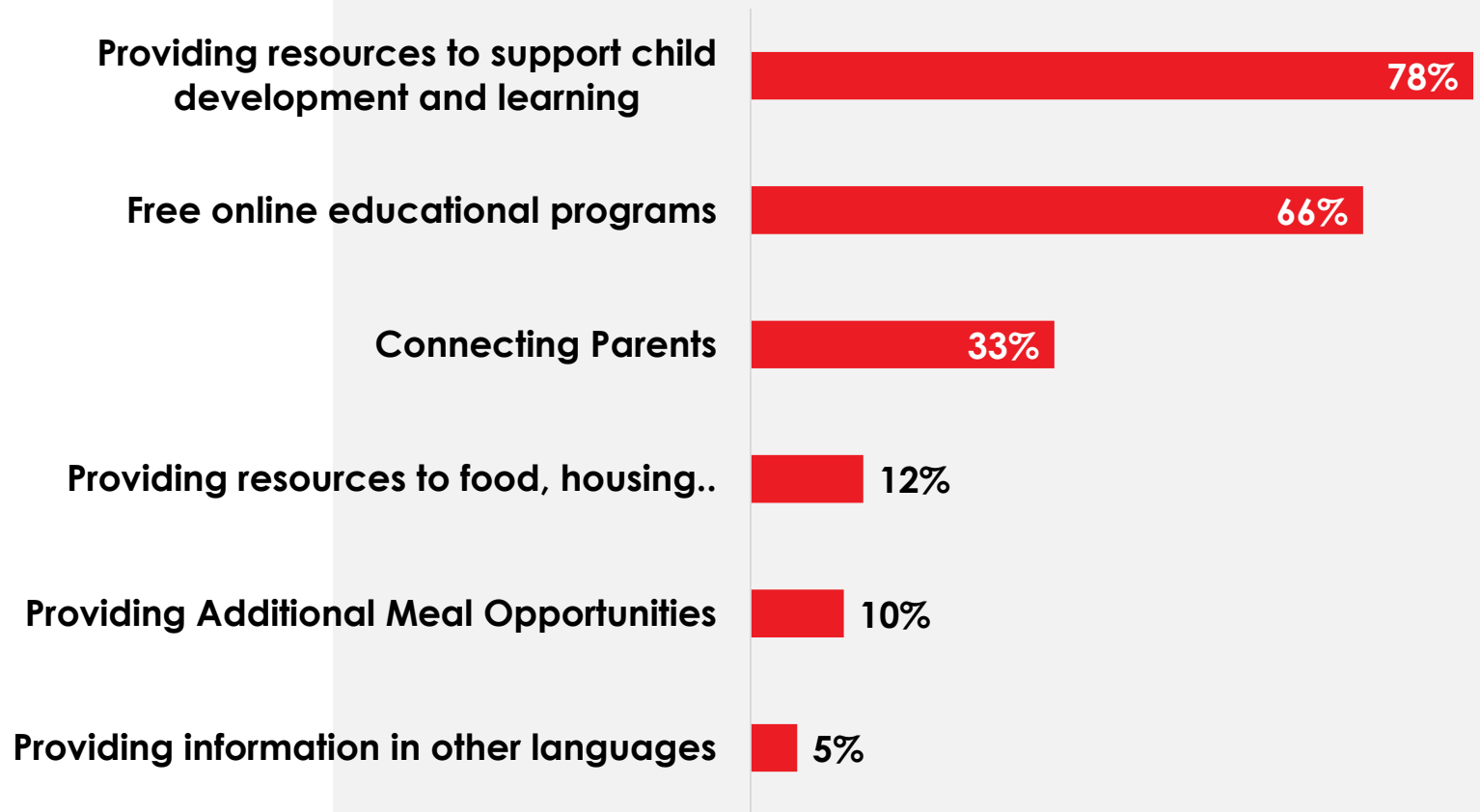


DELAWARE READINESS TEAMS



# Accommodations to Support Child Development

**What accommodations would be helpful to support your child's development at home going forward? (Select all that apply)**

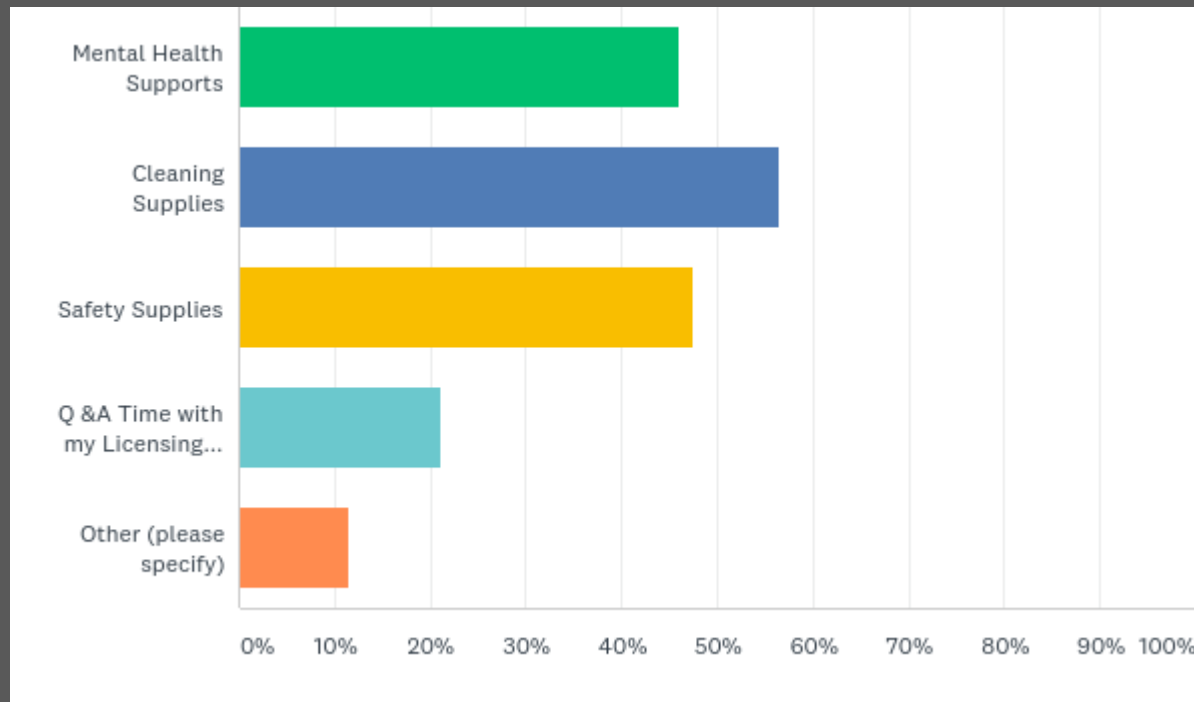


# About the Making A Difference Survey

- Early Childhood Professionals are dealing with a lot during the COVID-19 crisis, and many questions remain.
- The survey aimed to gather information from early childhood professionals so the Making A Difference conference committee can make a decision on if the 2020 conference will occur virtually and to better understand the current needs of those serving families during and after the crisis.
- 364 Delaware early learning professionals shared their thoughts on if they would participate in a virtual conference and what platform and timing is most convenient. They also shared details on what supports they need the most right now and what additional topics they are interested in learning more about.
- This non-scientific survey was distributed through email and social media between July 13 and July 24. Governor Carney's initial Declaration of a State of Emergency was March 12.



What supports do you need during this time?  
(Check all that apply)



ANSWER CHOICES	RESPONSES	
Mental Health Supports	46.07%	129
Cleaning Supplies	56.43%	158
Safety Supplies	47.50%	133
Q & A Time with my Licensing Specialist	21.07%	59
Other (please specify)	11.43%	32
Total Respondents: 280		



What topics are you most interested in learning more about at this time?

Q11 What topics are you most interested in learning more about during this time?

Caring ADMINISTRATION Leadership help time trauma Classroom Engaging Curriculum  
creative Working Stress topics ways management Professionalism  
Health Safety deal staff child care families teaching  
COVID mental health children keep pandemic  
practices learning challenges Safety n social emotional activities  
COVID-19 young Preschool health Supporting inclusion  
Classroom management Early Childhood virtual learning interested  
social distancing Anything

How to Adapt  
During COVID

Mental Health

Resources/Learning

Health and Safety





# Quotes from the Field: Anything else you would like to share with us?

"This is an extremely difficult time with the loss of so many staff, trying to hire, maintain all of the health and safety issues we are doing, training of new staff, have qualified staff in the classrooms, interns being left alone and then just dealing with the uncertainty of staff and families worried if a child has a sniffle."

"Need a statewide requirements page for parents to follow during COVID so they see we aren't just making up the rules"

"Hope for a stable learning environment. The Pandemic has changed the format of presenting material to students whose homes are not technology supportive."

"Please continue to work on reaching out especially during the pandemic. Sending up-to-date information is so helpful especially when getting inconsistent messages from our current US Administration!"

"Go back to phase 1 especially with interns and aides as you know it's hard to find certified teachers before the virus." We need financial support increased unemployment support is making it difficult to find help how can we serve the families."

"It would be good to have a lesson on how to take a workshop online for the teachers who are not new school but old schoolers."

# Next Steps

Visit the **Delaware Readiness Teams COVID-19 page** for family resources like at-home learning activities and early childhood professional resources

[delawarereadinessteam.com/covid-19-resources](https://delawarereadinessteam.com/covid-19-resources).

Use the survey to inform parent-facing programming including webinars/resources on the following topics:

1. Mental health and how to support children's social emotional development
2. Learning resources
3. Safety and health guidelines

Email [delawarereadinessteams@gmail.com](mailto:delawarereadinessteams@gmail.com) with ideas for additional topics or resources you'd like to see in the coming weeks.

