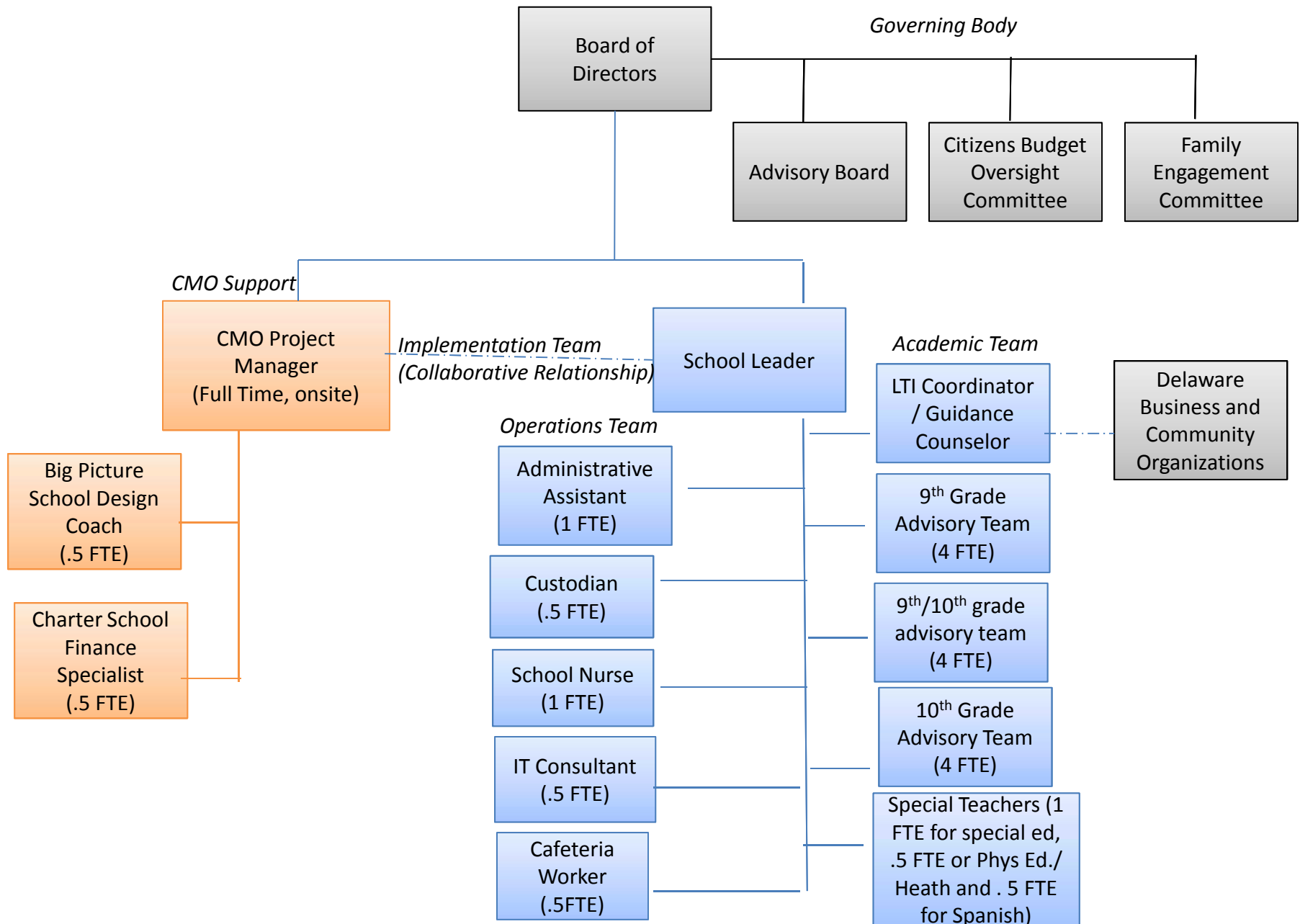
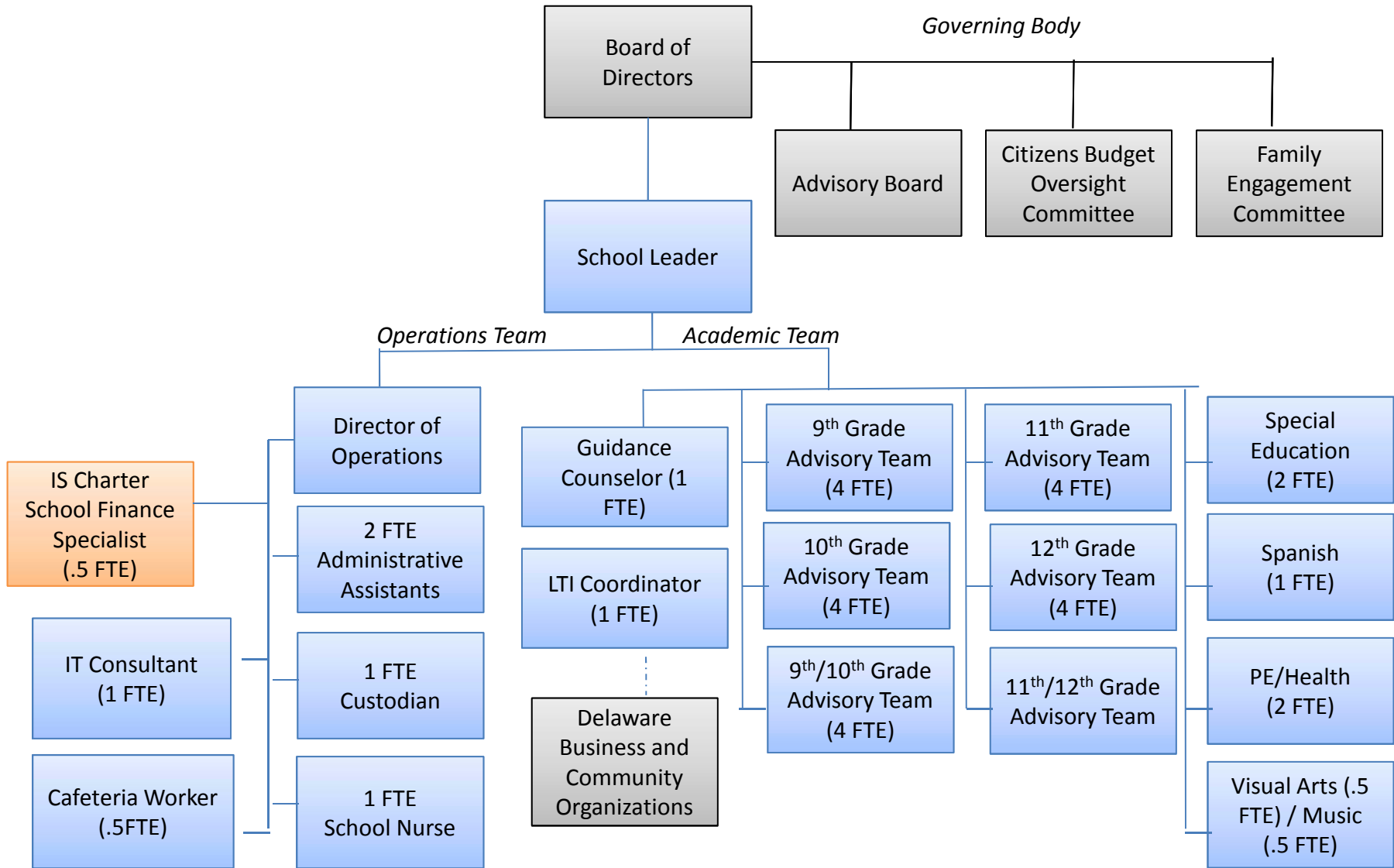


The Delaware MET Organizational Chart – Year 1 of Operations



The Delaware MET Organizational Chart – Full Scale (Year 5 of Operations)



The Delaware Met Organizational Chart Descriptions

As shown in the attached organization chart, for Year 1, the school's administrative team responsible for ensuring implementation of the school's academic program and operations infrastructure will be the school leader and the CMO Project Manager. The school leader will dedicate the majority of their time to serving as the instructional leader, while also providing oversight of the school's operations. The CMO Project Manager will dedicate a larger portion of their time to helping establish all operational components of the school, and provide oversight on implementation of the school's academic program. Both will be full-time and will report directly to the Board.

Two part-time CMO staff will also support the school in the start-up years - a charter school finance specialist and a Big Picture school design coach, both of which will be overseen by the CMO Project Manager. Additional school employees considered part of the administrative team and overseen by the school leader will be a full-time administrative assistant, a part-time custodian, a full-time school nurse, a part-time cafeteria worker, and a part-time Information Technology consultant.

In year 1, the school intends to enroll 132 9th grade students and 132 10th grade students. These students will be formed into three "teams" of 88 students, including one 9th grade team of 88 students, one 10th grade team of 88 students, and one 9th/10th grade team of 88 students, with 44 students from each grade level. Each of these teams will be served by 4 core teachers with expertise in ELA, Math, Science, and Social Studies. For the 9th/10th grade team, advisories and academic seminars will be grade specific. Three of the twelve teachers will be dual certified in special education. The school will also employ one full-time LTI Coordinator/Guidance counselor, one full-time special education teacher, a part-time PE/Health teacher, and a part-time Spanish teacher. All teaching staff will report directly to the school leader. The teacher to student ratio will be roughly 1:18. The adult to student ratio will be roughly 1:13.

By Year 5 of operations, the administrative team will change slightly. The CMO team will have built the capacity of the school staff to operate a strong, healthy school independently, and will have transferred operational responsibilities to a full-time Director of Operations employed by the school. The only CMO staff that is likely to stay in place will be the part-time charter school finance specialist, who would report directly to the Director of Operations. The school leader will continue to lead the school's instructional program, oversee the school's operations, and all staff hired by the school. The school leader and Director of Operations will both report directly to the Board.

Non-teaching staff at the school will grow slightly to include 1 nurse, 2 administrative assistants, 1 custodian, 1 full-time IT consultant, and a part-time cafeteria worker.

By Year 5, school enrollment will grow to 528 students, with 132 students per grade. The student body will be grouped into six teams, each consisting of 88 students. Two of the teams will combine grade levels – one 9th/10th grade team of 88 students (44 from each grade level), and one 11th/12th grade team of 88 students (44 from each grade level). Advisories and seminars in the mixed grade teams will be grade specific. As in the early years, each team of

**The Delaware Met
Organizational Chart Descriptions**

88 students will be supported by four teachers with expertise in ELA, Math, Social Studies, and Science. Of the 24 teachers employed by the school, five will be dual certified with special education. The school will employ an additional 2 special education teachers, 1 fulltime LTI Coordinator, 1 full time Guidance Counselor, 1 PE/health teacher, 1 full-time Spanish teacher, a part-time visual arts teacher, and a part-time music teacher. The teacher to student ratio will be maintained at roughly 1:18. The adult to student ratio in the building will be roughly 1:15.