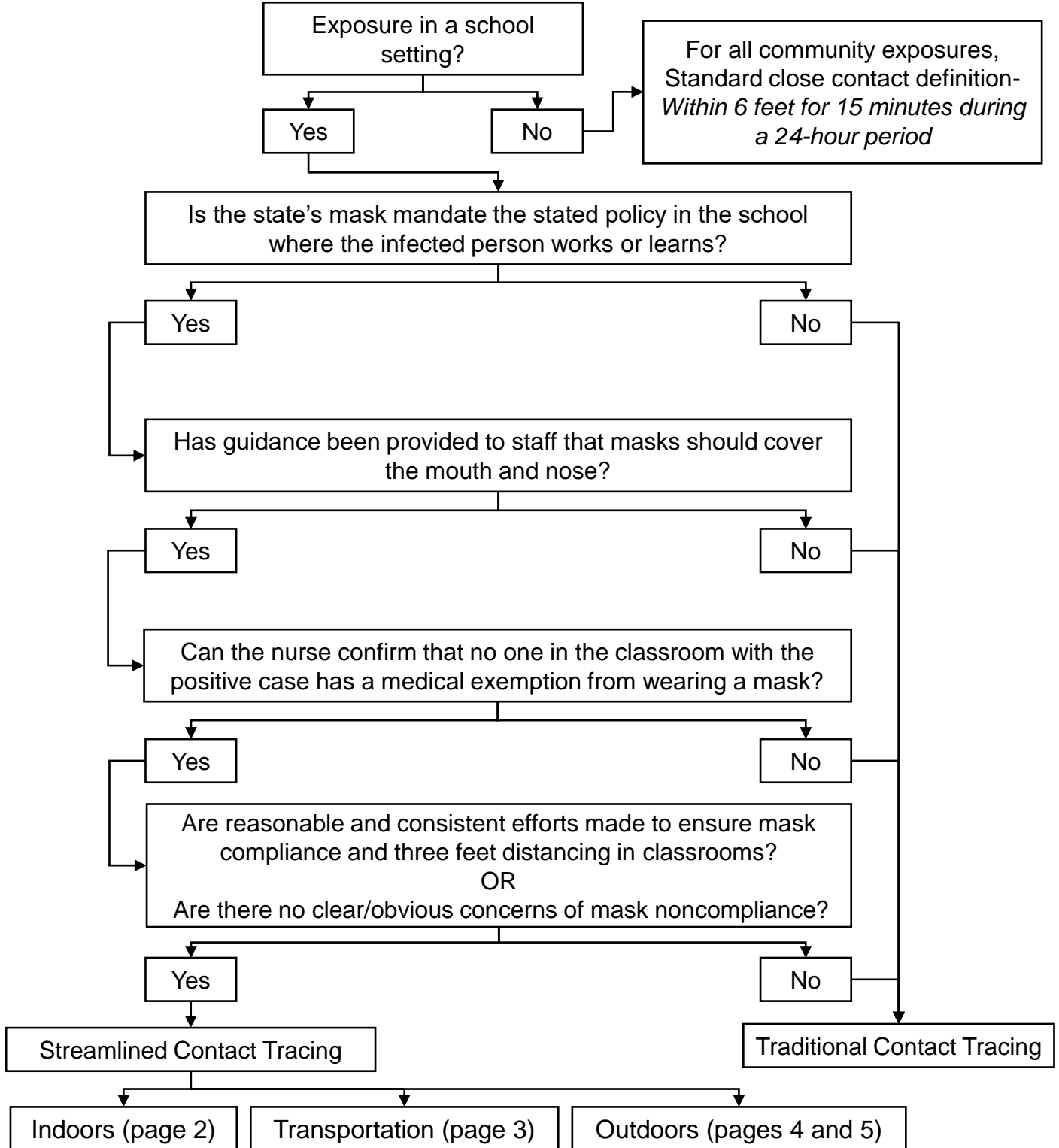


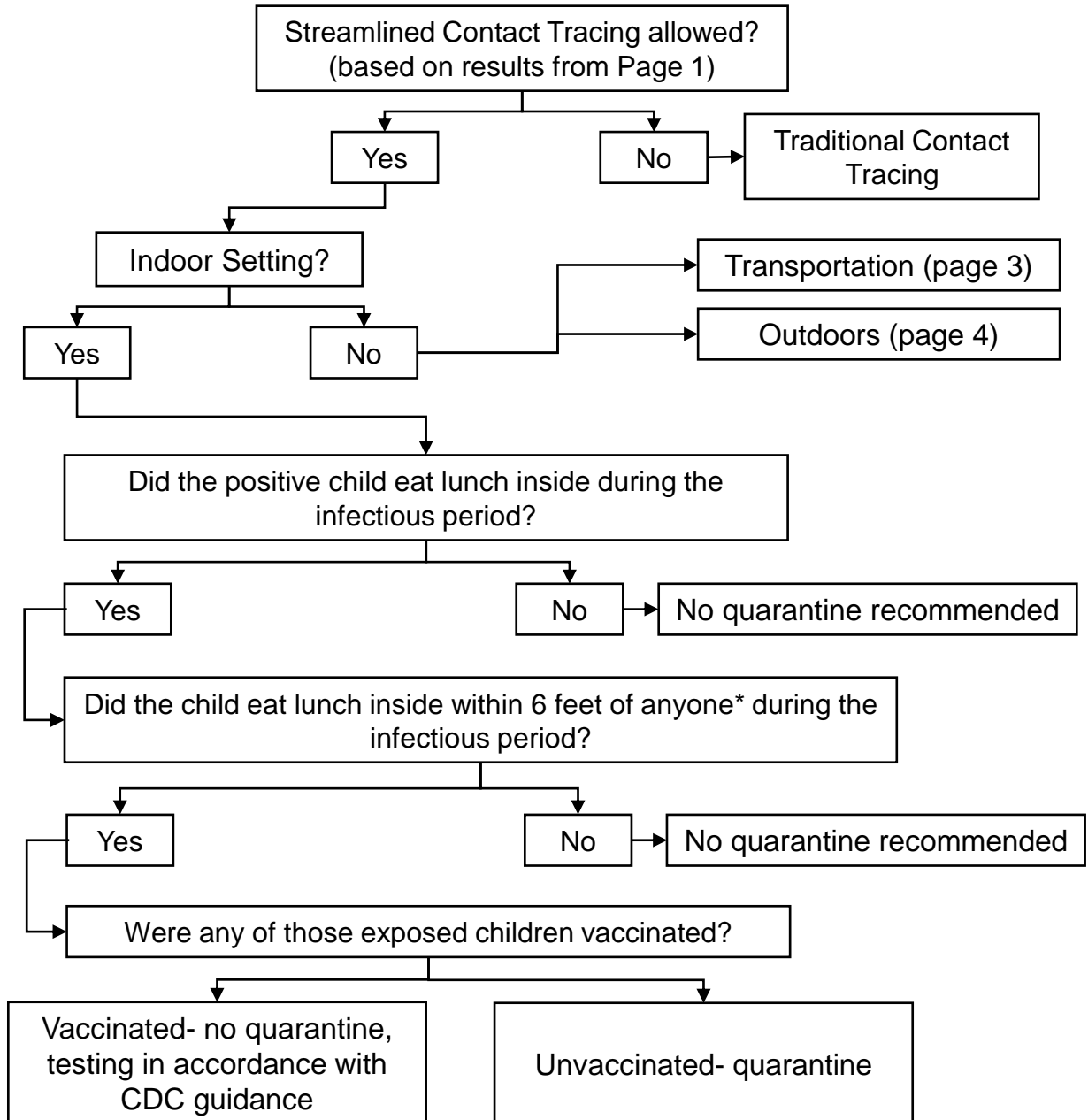
COVID-19 Contact Tracing in Schools

School personnel conducting the contact tracing should use the below checklist to determine whether the streamlined contact-tracing process may be followed. If Division of Public Health Epidemiologists are consulted, they will ask school officials the same questions to determine whether the streamlined contact-tracing process may be followed



COVID-19 Contact Tracing in Schools

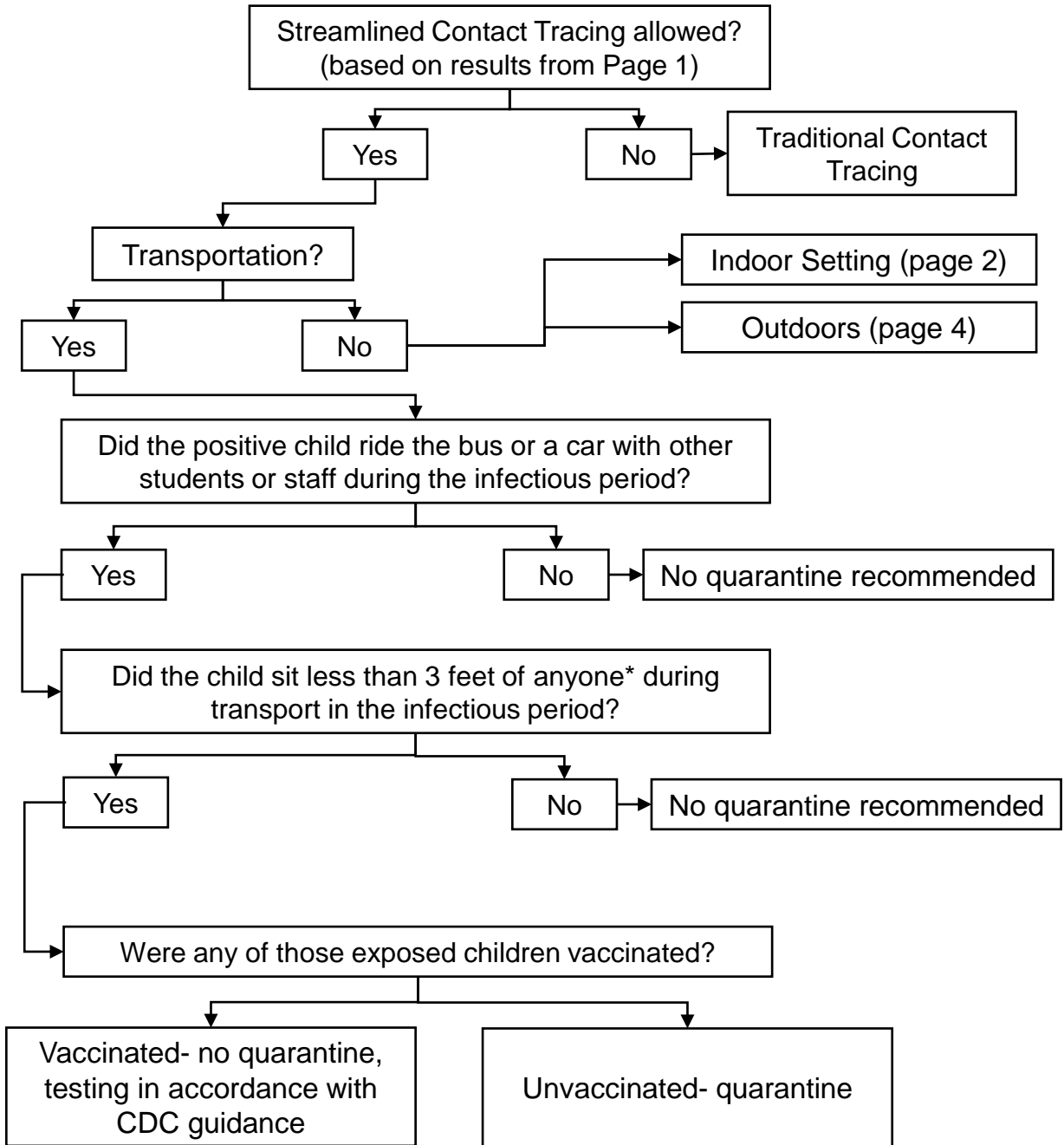
Streamlined contact tracing in Indoor Settings (e.g. classroom, hallway, lunchroom, etc).
Continued from Page 1.



*close, sustained contact defined as within 6 feet for >15 minutes

COVID-19 Contact Tracing in Schools

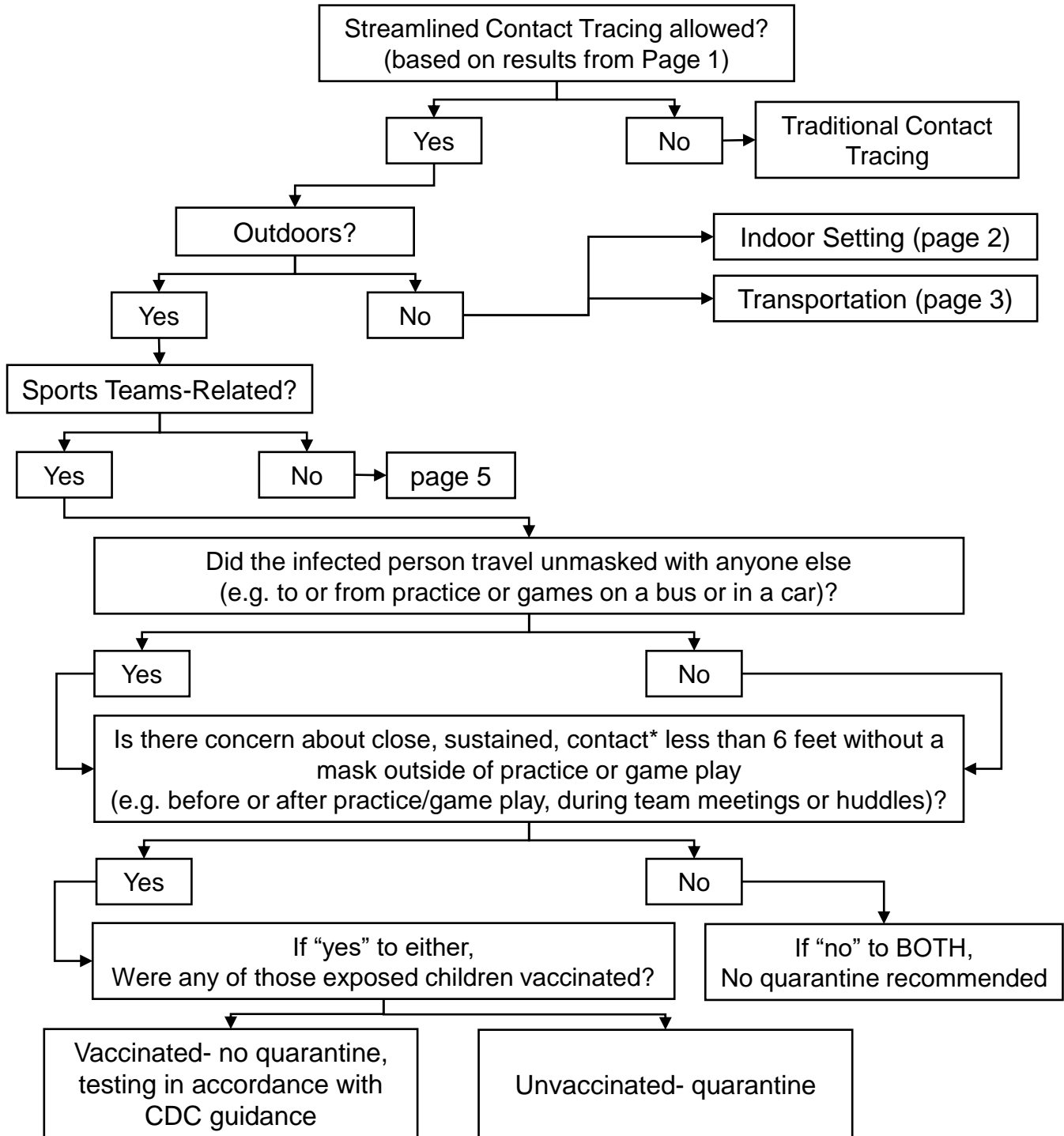
Streamlined contact tracing on Transportation (e.g. buses, cars, etc).
Continued from Page 1.



*close, sustained contact defined as within 3 feet for >15 minutes

COVID-19 Contact Tracing in Schools

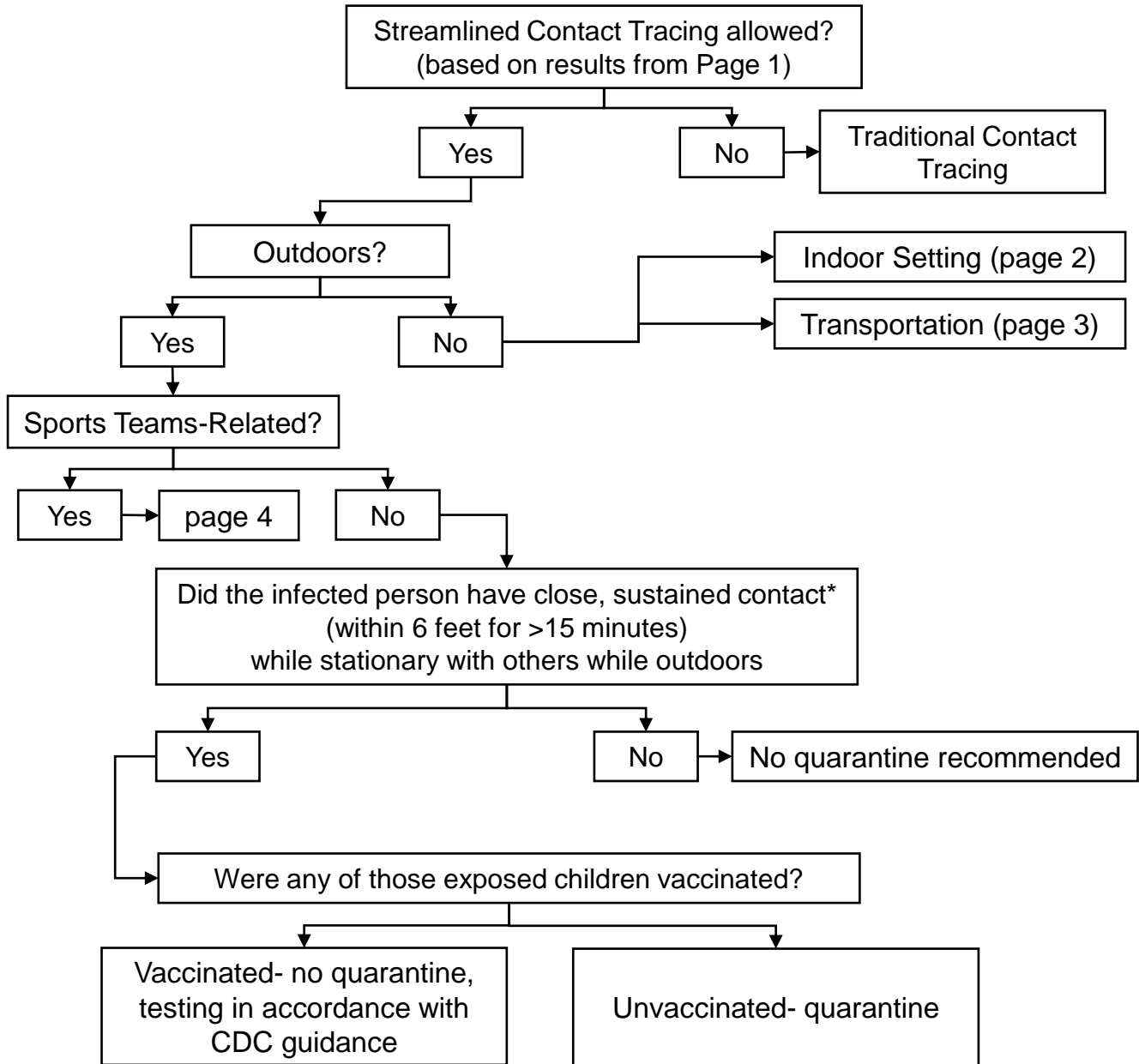
Streamlined contact tracing in Outdoor Exposures related to sports teams.
Continued from Page 1.



*close, sustained contact defined as within 6 feet for >15 minutes

COVID-19 Contact Tracing in Schools

Streamlined contact tracing in Outdoor Exposures not related to sports teams.
Continued from Page 1.



*close, sustained contact defined as within 6 feet for >15 minutes