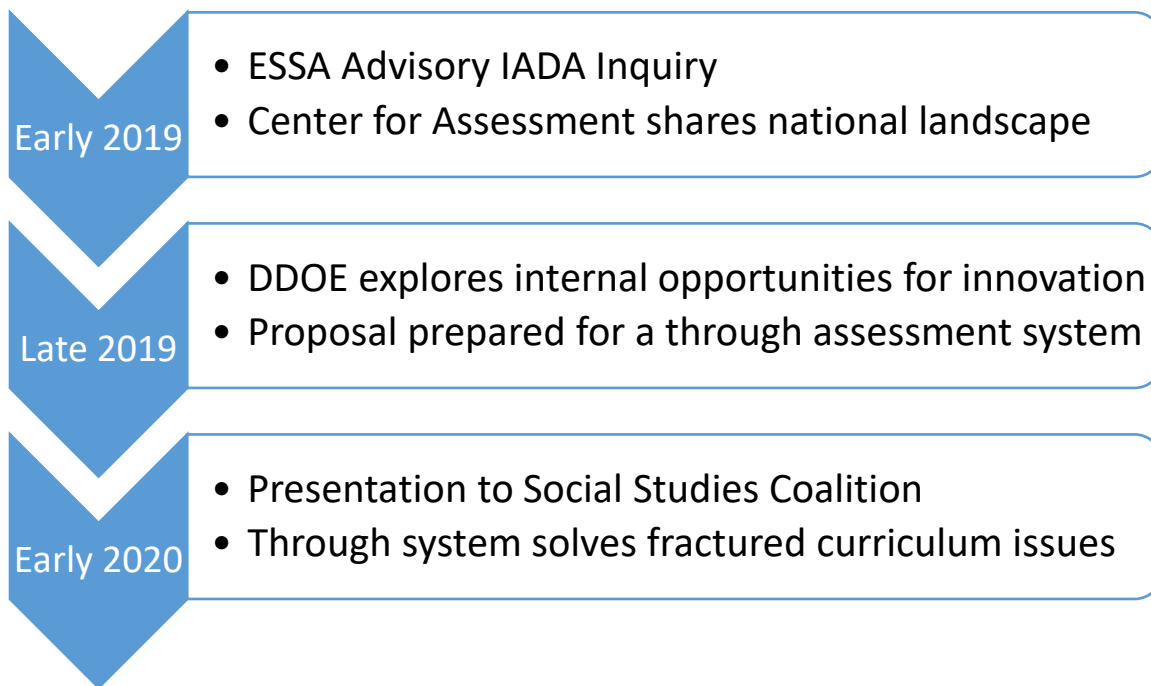


Delaware Transitions to Innovative Through Assessment System for Social Studies by SY2024-2025



➤ **Why Shift to a Though Assessment System**

- Covers fewer standards at a deeper level to encourage more depth of instruction
- Teachers receive actionable feedback and adjust instruction
- Shorter assessments given in one class period, just-in-time feedback
- States and LEAs assured of the quality of tests
- Discourages pretest preparation and a long period of “testing mode” near the end of the year
- LEAs save time and expense of purchasing supplementary assessments

➤ **Scoring Considerations**

- Cluster the tests within each grade to add up creating a summative score for the year. This would be similar to the “grade book model” typically used by teachers where grades are combined to produce an overall grade for the year.
- The summative claim is not only about the student at the end of the year, but also the student at the times the through year assessments were administered as well.
- A grade book approach supports the claim or interpretation: “This student learned the content at the pacing set by the teacher, district, or curriculum.”

Aligning Shifts in Curriculum, Instruction, and Assessment

Social Studies Delaware Recommended Curriculum and DeSSA Shifts by Grade, 2021 – 2026					
Standards/Curriculum Shift by Grade					
GRADE	21-22 SY	22-23 SY	23-24 SY	24-25 SY	25-26 SY
4	status quo in class new curriculum development	Civics History	Civics History	Civics History	Civics History
5	status quo in class	status quo in class new curriculum development	Economics Geography	Economics Geography	Economics Geography
6	status quo in class new curriculum development	Geography	Geography	Geography	Geography
7	status quo in class	status quo in class new curriculum development	Civics Economics	Civics Economics	Civics Economics
8	History	History	History	History	History

Yellow = first year of new curriculum taught in classrooms

Social Studies Delaware Recommended Curriculum and DeSSA Shifts by Grade, 2021 – 2026					
Assessment Shift by Grade					
GRADE	21-22 SY	22-23 SY	23-24 SY	24-25 SY	25-26 SY
4	Existing DeSSA Summative gr 4 test Interim development Civics History	Interim field tests Civics History <u>No summative gr 4 test*</u>	Interim operational tests Civics History	Interim operational tests Civics History	Interim operational tests Civics History
5	No testing or development	Interim development Economics Geography	Interim field tests Economics Geography	Interim operational tests Economics Geography	Interim operational tests Economics Geography
6	Interim development Geography	Interim field tests Geography	Interim operational tests Geography	Interim operational tests Geography	Interim operational tests Geography
7	Existing DeSSA Summative gr 7 test	Interim development Civics Economics <u>No summative gr 7 test*</u>	Interim field tests Civics Economics	Interim operational tests Civics Economics	Interim operational tests Civics Economics
8	Interim field tests History	Interim operational tests History	Interim operational tests History	Interim operational tests History	Interim operational tests History

* = proposed end of Gr 4 and 7 summative testing in 22-23; requires recommendation from DE TAC

Yellow = first year of interim testing