



Delaware Public School

Enrollment Trends

January 2012



TABLE OF CONTENTS

LIST OF TABLES

<u>Table</u>		<u>Page</u>
1	Historical Public School Enrollment Pre-K to 12 th Grade.....	2
2	Year to Year Change in School Enrollment.....	4
3	Population Projections and Estimates by Age Group 2010-2025	8

LIST OF FIGURES

<u>Figure</u>		<u>Page</u>
1	Delaware Historical Public and Private School Enrollment 1956 - 2010.....	6
2	Private and Charter School Enrollment as a Percentage of Total Delaware School Enrollment...	7
3	Delaware School District Map	9
4	Delaware Public School Enrollment by County	10
5	Percent of Delaware School Age Population by County.....	11
6	Delaware Projected School Age Population by Age	12
7	Delaware and Counties Age 5-17 Population Projections.....	13
8	Number of Births by County	14
9	Net In Migration by County	15

NEW CASTLE COUNTY

10	New Castle County Public School Enrollment	17
11	New Castle County Enrollment by Grade	18
12	New Castle County Projected School Age Population by Age	19

KENT COUNTY

13	Kent County Public School Enrollment	21
14	Kent County Enrollment by Grade.....	22
15	Kent County Projected School Age Population by Age.....	23

SUSSEX COUNTY

16	Sussex County Public School Enrollment.....	25
17	Sussex County Enrollment by Grade	26
18	Sussex County Projected School Age Population by Age (line graph).....	27
19	Sussex County Projected School Age Population by Age (bar graph).....	28

Delaware Enrollment Trends

**TABLE 1
HISTORICAL PUBLIC SCHOOL ENROLLMENT PRE-K TO 12TH GRADE**

NEW CASTLE COUNTY

Total Enrollment	1998-1999	1999-2000	2000-2001	2001-2002	2002-2003	2003-2004	2004-2005	2005-2006	2006-2007	2007-2008	2008-2009	2009-2010	2010-2011	2011-2012	2011-12 vs. 2010-11 Change	10 Yr. % Change
APPOQUINIMINK	4,523	4,889	5,346	5,815	5,813	6,393	6,710	7,294	7,588	8,193	8,658	9,011	9,319	9,433	114	62.3%
ASPIRA ACADEMY														304	304	
BRANDYWINE	11,435	11,240	10,953	10,557	10,702	10,601	10,645	10,573	10,321	10,113	10,217	10,254	10,657	10,801	144	0.9%
CHARTER SCHOOL OF WILMINGTON	552	686	798	888	937	918	936	935	949	957	960	987	970	970	0	
CHRISTINA	20,336	20,449	19,882	19,755	19,606	19,407	19,417	19,233	18,495	17,292	17,200	16,980	17,190	16,848	-342	-14.1%
COLONIAL	10,554	10,688	10,521	10,441	10,353	10,339	10,454	10,475	10,361	10,430	10,465	10,125	9,925	9,855	-70	-4.8%
DEL ACAD PUBLIC SAFETY														117	117	
DELAWARE COLLEGE PREP	0	0	0	0	0	0	0	0	0	0	112	179	244	276	32	
DELAWARE MILITARY ACADEMY	0	0	0	0	0	305	414	509	518	520	526	540	556	559	3	
EAST SIDE CHARTER SCHOOL	80	68	83	96	112	144	140	202	247	284	355	371	388	401	13	
FAMILY FOUNDATION ACADEMY	0	0	0	0	0	0	0	0	229	309	389	440	622	751	129	
GATEWAY CHARTER														183	183	
KUUMBA ACADEMY CHARTER	0	0	0	164	205	240	241	243	254	243	253	253	253	260	7	
MARION T. ACADEMY CHARTER	0	0	398	521	581	606	631	502	535	559	0	0	0	0	0	
MAURICE J. MOYER ACADEMY	0	0	0	0	0	0	0	0	264	305	325	484	202	192	-10	
MOT CHARTER SCHOOL	0	0	0	0	525	594	675	673	675	676	675	676	675	677	2	
NCC VOTECH	3,517	3,388	3,289	3,316	3,375	3,392	3,464	3,492	3,794	4,105	4,379	4,635	4,723	4,759	36	41.0%
NEWARK CHARTER SCHOOL	0	0	0	435	541	621	648	647	648	1,289	1,286	1,286	1,336	1,344	8	
ODYSSEY CHARTER SCHOOL	0	0	0	0	0	0	0	0	123	203	293	376	438	500	62	
PENCADER BUSINESS AND FINANCE	0	0	0	0	0	0	0	0	326	435	575	619	616	507	-109	
PRESTIGE ACADEMY	0	0	0	0	0	0	0	0	0	0	103	177	243	300	57	
REACH ACADEMY	0	0	0	0	0	0	0	0	0	0	0	0	221	266	45	
RED CLAY	15,916	15,707	15,827	15,777	15,624	15,556	15,398	15,728	15,594	15,721	15,709	15,674	15,954	16,103	149	3.1%
RICHARD MILBURN ACADEMY	0	100	0	0	0	0	0	0	0	0	0	0	0	0	0	
THOMAS A. EDISON CHARTER	0	0	834	883	750	776	785	840	842	833	825	791	755	729	-26	
NEW CASTLE	66,913	67,215	67,931	68,648	69,124	69,892	70,558	71,346	71,763	72,467	73,305	73,858	75,287	76,135	848	10.1%
CHARTER SCHOOL BREAKOUT	632	854	2,113	2,987	3,651	4,204	4,470	4,551	5,610	6,613	6,677	7,179	7,519	8,070	551	121.0%

KENT COUNTY

Total Enrollment	1998-1999	1999-2000	2000-2001	2001-2002	2002-2003	2003-2004	2004-2005	2005-2006	2006-2007	2007-2008	2008-2009	2009-2010	2010-2011	2011-2012	2011-12 vs. 2010-11 Change	10 Yr. % Change
ACADEMY OF DOVER CHARTER	0	0	0	0	0	408	426	385	282	205	238	256	263	256	-7	
CAESAR RODNEY	6,508	6,575	6,765	6,700	6,666	6,608	6,742	6,967	6,986	7,143	7,279	7,399	7,587	7,632	45	14.5%
CAMPUS COMMUNITY CHARTER	300	301	301	299	555	569	592	589	572	593	597	611	601	582	-19	
CAPITAL	6,351	6,268	6,239	6,259	6,115	5,909	5,864	5,982	6,119	6,179	6,161	6,250	6,321	6,273	-48	2.6%
LAKE FOREST	3,513	3,469	3,435	3,402	3,429	3,397	3,572	3,740	3,921	3,930	3,877	3,852	3,953	3,908	-45	14.0%
MILFORD	3,791	3,849	3,777	3,679	3,742	3,795	3,761	3,909	3,965	4,070	4,109	4,077	4,207	4,155	-52	11.0%
POLYTECH	1,023	1,076	1,040	1,068	1,127	1,146	1,149	1,150	1,162	1,147	1,164	1,177	1,185	1,180	-5	4.7%
POSITIVE OUTCOMES CHARTER	60	63	75	78	78	113	120	114	122	116	120	114	117	125	8	
PROVIDENCE CREEK CHARTER	0	0	0	0	470	656	620	605	667	662	671	689	696	688	-8	
SMYRNA	3,421	3,404	3,379	3,494	3,247	3,311	3,645	3,930	4,230	4,460	4,657	4,853	4,981	5,116	135	57.6%
KENT TOTAL	24,967	25,005	25,011	24,979	25,429	25,912	26,491	27,371	28,026	28,505	28,873	29,278	29,911	29,915	4	17.6%
CHARTER SCHOOL BREAKOUT	360	364	376	377	1,103	1,746	1,758	1,693	1,643	1,576	1,626	1,670	1,677	1,651	-26	49.7%

TABLE 1 (Continued)
HISTORICAL PUBLIC SCHOOL ENROLLMENT PRE-K TO 12TH GRADE

SUSSEX COUNTY

Total Enrollment	1998-1999	1999-2000	2000-2001	2001-2002	2002-2003	2003-2004	2004-2005	2005-2006	2006-2007	2007-2008	2008-2009	2009-2010	2010-2011	2011-2012	2011-12 vs. 2010-11 Change	10 Yr. % Change
CAPE HENLOPEN	4,137	4,223	4,145	4,150	4,256	4,262	4,311	4,371	4,404	4,493	4,519	4,560	4,634	4,845	211	13.8%
DELMAR	735	786	949	977	1,025	1,066	1,061	1,070	1,070	1,149	1,158	1,140	1,282	1,309	27	27.7%
GEORGETOWN CHARTER SCHOOL	0	0	0	607	0	0	0	0	0	0	0	0	0	0	0	
INDIAN RIVER	7,562	7,615	7,601	7,482	7,747	7,757	7,802	7,887	8,138	8,388	8,485	8,700	8,784	8,871	87	14.5%
LAUREL	2,147	2,116	2,108	1,944	2,001	2,008	2,040	2,131	2,076	2,088	2,092	2,156	2,194	2,171	-23	8.5%
SEAFORD	3,756	3,866	3,676	3,381	3,441	3,447	3,376	3,304	3,300	3,367	3,392	3,467	3,508	3,460	-48	0.6%
SUSSEX ACAD. OF ARTS & SCIENCES	0	0	227	261	310	307	317	322	323	323	323	324	329	335	6	
SUSSEX TECHNICAL	1,152	1,184	1,158	1,195	1,207	1,211	1,215	1,194	1,227	1,249	1,251	1,283	1,295	1,309	14	8.5%
WOODBRIDGE	1,821	1,838	1,964	1,893	1,904	1,915	1,938	1,942	1,936	2,012	2,032	2,035	2,179	2,260	81	18.7%
SUSSEX	21,310	21,628	21,828	21,890	21,891	21,973	22,060	22,221	22,474	23,069	23,252	23,665	24,205	24,560	355	12.2%
CHARTER SCHOOL BREAKOUT	0	0	227	868	310	307	317	322	323	323	323	324	329	335	6	8.1%
STATE TOTAL	113,190	113,848	114,770	115,517	116,444	117,777	119,109	120,938	122,263	124,041	125,430	126,801	129,403	130,610	1,207	12.2%
STATE CHARTER BREAKOUT	992	1,218	2,716	4,232	5,064	6,257	6,545	6,566	7,576	8,512	8,626	9,173	9,525	10,056	531	98.6%

Source: Delaware Department of Education

TABLE 2
YEAR TO YEAR CHANGE IN SCHOOL ENROLLMENT

NEW CASTLE COUNTY

Total Enrollment	1998-1999	1999-2000	2000-2001	2001-2002	2002-2003	2003-2004	2004-2005	2005-2006	2006-2007	2007-2008	2008-2009	2009-2010	2010-2011	2011-2012
APPOQUINIMINK	386	366	457	469	-2	580	317	584	294	605	465	353	308	114
BRANDYWINE	138	-195	-287	-396	145	-101	44	-72	-252	-208	104	37	403	144
CHARTER SCHOOL OF WILMINGTON	162	134	112	90	49	-19	18	-1	14	8	3	27	-17	0
CHRISTINA	-64	113	-567	-127	-149	-199	10	-184	-738	-1,203	-92	-220	210	-342
COLONIAL	133	134	-167	-80	-88	-14	115	21	-114	69	35	-340	-200	-70
DELAWARE COLLEGE PREP	0	0	0	0	0	0	0	0	0	0	112	67	65	32
DELAWARE MILITARY ACADEMY	0	0	0	0	0	305	109	95	9	2	6	14	16	3
EAST SIDE CHARTER SCHOOL	4	-12	15	13	16	32	-4	62	45	37	71	16	17	13
FAMILY FOUNDATION ACADEMY	0	0	0	0	0	0	0	0	229	80	80	51	182	129
KUUMBA ACADEMY CHARTER	0	0	0	164	41	35	1	2	11	-11	10	0	0	7
MARION T. ACADEMY CHARTER	0	0	398	123	60	25	25	-129	33	24	-559	0	0	0
MAURICE J. MOYER ACADEMY	0	0	0	0	0	0	0	0	264	41	20	159	-282	-10
MOT CHARTER SCHOOL	0	0	0	0	525	69	81	-2	2	1	-1	1	-1	2
NCC VOTECH	179	-129	-99	27	59	17	72	28	302	311	274	256	88	36
NEWARK CHARTER SCHOOL	0	0	0	435	106	80	27	-1	1	641	-3	0	50	8
ODYSSEY CHARTER SCHOOL	0	0	0	0	0	0	0	0	123	80	90	83	62	62
PENCADER BUSINESS AND FINANCE	0	0	0	0	0	0	0	0	326	109	140	44	-3	-109
PRESTIGE ACADEMY	0	0	0	0	0	0	0	0	0	0	103	74	66	57
REACH ACADEMY	0	0	0	0	0	0	0	0	0	0	0	0	221	45
RED CLAY	265	-209	120	-50	-153	-68	-158	330	-134	127	-12	-35	280	149
RICHARD MILBURN ACADEMY	0	100	-100	0	0	0	0	0	0	0	0	0	0	0
THOMAS A. EDISON CHARTER	0	0	834	49	-133	26	9	55	2	-9	-8	-34	-36	-26
NEW CASTLE	1,203	302	716	717	476	768	666	788	417	704	838	553	1,429	848
CHARTER SCHOOL BREAKOUT	166	222	1,259	874	664	553	266	81	1,059	1,003	64	502	340	551

KENT COUNTY

Total Enrollment	1998-1999	1999-2000	2000-2001	2001-2002	2002-2003	2003-2004	2004-2005	2005-2006	2006-2007	2007-2008	2008-2009	2009-2010	2010-2011	2011-2012
ACADEMY OF DOVER CHARTER	0	0	0	0	0	408	18	-41	-103	-77	33	18	7	-7
CAESAR RODNEY	-63	67	190	-65	-34	-58	134	225	19	157	136	120	188	45
CAMPUS COMMUNITY CHARTER	300	1	0	-2	256	14	23	-3	-17	21	4	14	-10	-19
CAPITAL	-3	-83	-29	20	-144	-206	-45	118	137	60	-18	89	71	-48
LAKE FOREST	-34	-44	-34	-33	27	-32	175	168	181	9	-53	-25	101	-45
MILFORD	-20	58	-72	-98	63	53	-34	148	56	105	39	-32	130	-52
POLYTECH	-35	53	-36	28	59	19	3	1	12	-15	17	13	8	-5
POSITIVE OUTCOMES CHARTER	2	3	12	3	0	35	7	-6	8	-6	4	-6	3	8
PROVIDENCE CREEK CHARTER	0	0	0	0	470	186	-36	-15	62	-5	9	18	7	-8
SMYRNA	53	-17	-25	115	-247	64	334	285	300	230	197	196	128	135
KENT TOTAL	200	38	6	-32	450	483	579	880	655	479	368	405	633	4
CHARTER SCHOOL BREAKOUT	302	4	12	1	726	643	12	-65	-50	-67	50	44	7	-26

TABLE 2 (Continued)

YEAR TO YEAR CHANGE IN SCHOOL ENROLLMENT

SUSSEX COUNTY

Total Enrollment	1998-1999	1999-2000	2000-2001	2001-2002	2002-2003	2003-2004	2004-2005	2005-2006	2006-2007	2007-2008	2008-2009	2009-2010	2010-2011	2011-2012
CAPE HENLOPEN	-72	86	-78	5	106	6	49	60	33	89	26	41	74	211
DELMAR	-18	51	163	28	48	41	-5	9	0	79	9	-18	142	27
GEORGETOWN CHARTER SCHOOL	0	0	0	607	-607	0	0	0	0	0	0	0	0	0
INDIAN RIVER	253	53	-14	-119	265	10	45	85	251	250	97	215	84	87
LAUREL	101	-31	-8	-164	57	7	32	91	-55	12	4	64	38	-23
SEAFORD	-60	110	-190	-295	60	6	-71	-72	-4	67	25	75	41	-48
SUSSEX ACAD. OF ARTS & SCIENCES	0	0	227	34	49	-3	10	5	1	0	0	1	5	6
SUSSEX TECHNICAL	23	32	-26	37	12	4	4	-21	33	22	2	32	12	14
WOODBIDGE	82	17	126	-71	11	11	23	4	-6	76	20	3	144	81
SUSSEX	309	318	200	62	1	82	87	161	253	595	183	413	540	355
CHARTER SCHOOL BREAKOUT	0	0	227	641	-558	-3	10	5	1	0	0	1	5	6
STATE TOTAL	1,712	658	922	747	927	1,333	1,332	1,829	1,325	1,778	1,389	1,371	2,602	1,207
STATE CHARTER BREAKOUT	468	226	1,498	1,516	832	1,193	288	21	1,010	936	114	547	352	531

Source: Delaware Department of Education

Figure 1
Delaware Historical Public and Private School Enrollment (K-12) 1956 - 2011

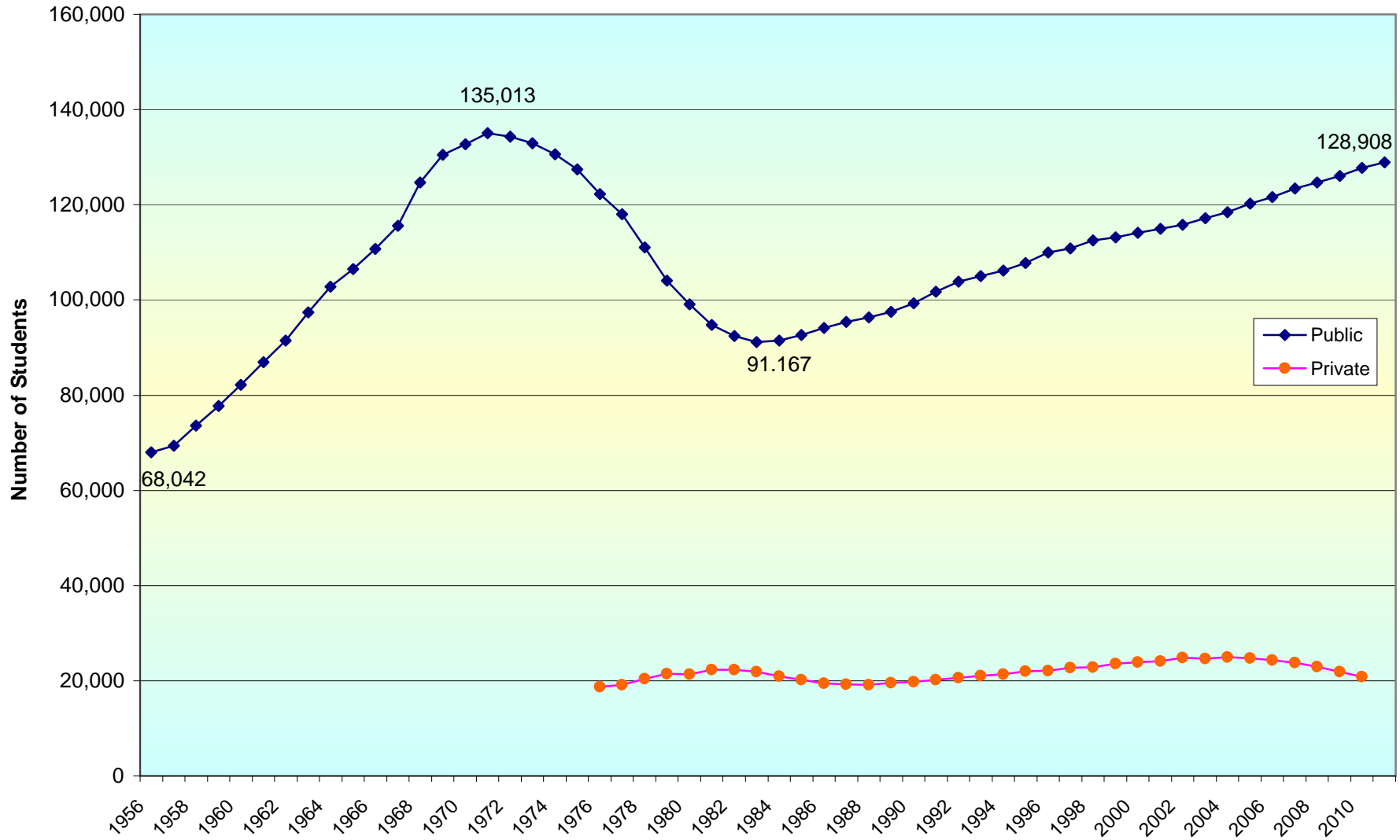


Figure 2
Private and Charter School Enrollment as a Percentage of Total Delaware Public and Private School Enrollment 1976-2010

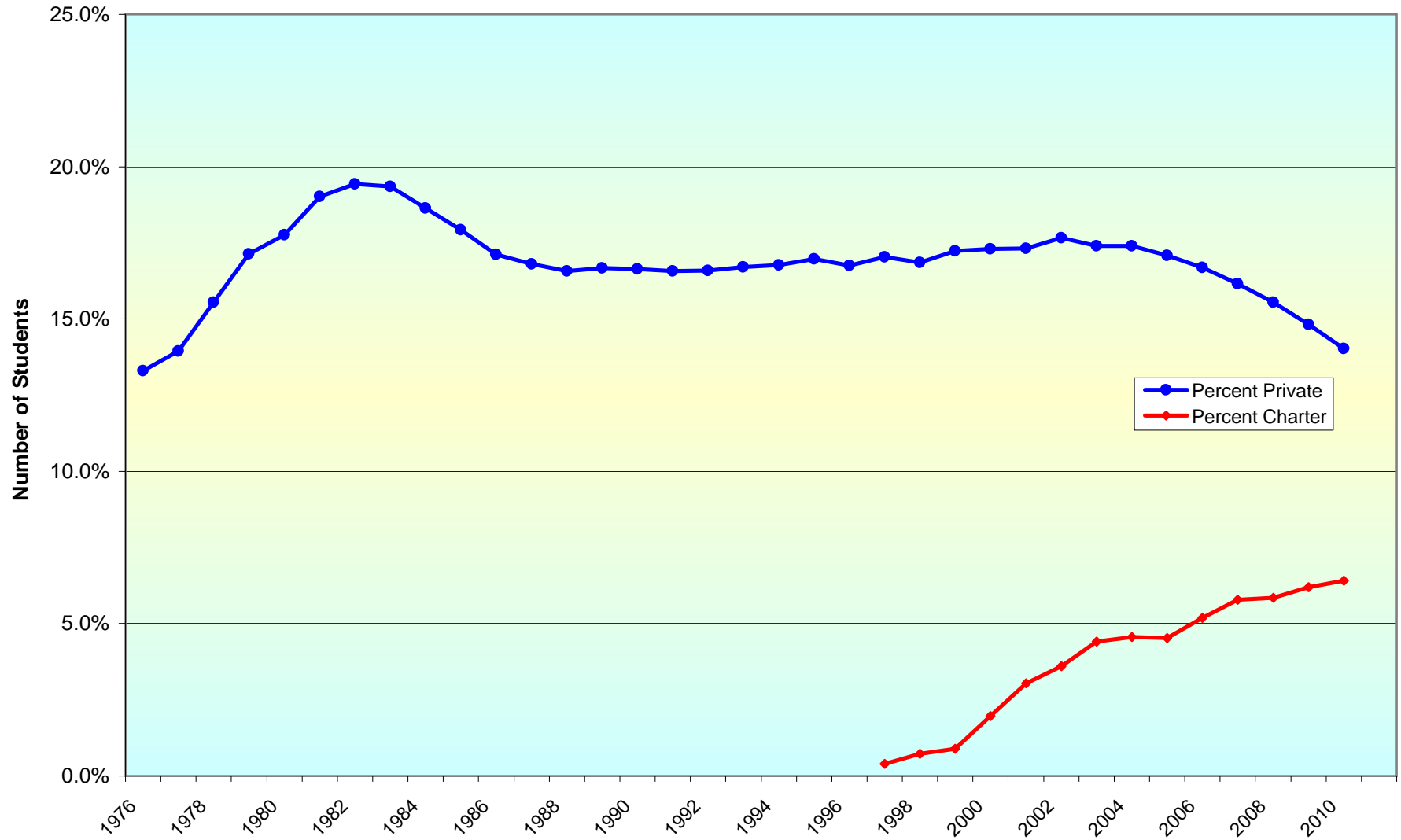


Table 3

POPULATION PROJECTIONS AND ESTIMATES BY AGE GROUP
2010-2025

Growth Projections for the School Age 5-17 Population

	2010	2015	2015-2010 Change	2020	2020-2015 Change	2025	2025-2020 Change	2025-2010 Change
State	149,358	153,462	4,104	159,054	5,592	162,032	2,978	12,674
NCC	92,372	92,864	492	93,731	867	93,119	-612	747
Kent	29,139	30,406	1,267	32,123	1,717	33,478	1,355	4,339
Sussex	27,847	30,192	2,345	33,200	3,008	35,435	2,235	7,588

Growth Projections for the 0-4 Population

	2010	2015	2015-2010 Change	2020	2020-2015 Change	2025	2025-2020 Change	2025-2010 Change
State	58,917	60,752	1,835	60,745	-7	61,198	453	2,281
NCC	35,882	35,979	97	35,078	-901	34,833	-245	-1,049
Kent	11,748	12,406	658	12,613	207	12,691	78	943
Sussex	11,287	12,367	1,080	13,054	687	13,674	620	2,387

Growth Projections for the 5-10 Population

	2010	2015	2015-2010 Change	2020	2020-2015 Change	2025	2025-2020 Change	2025-2010 Change
State	69,128	71,890	2,762	74,154	2,264	74,232	78	5,104
NCC	42,749	43,056	307	43,215	159	42,190	-1,025	-559
Kent	13,435	14,435	1,000	15,228	793	15,453	225	2,018
Sussex	12,944	14,399	1,455	15,711	1,312	16,589	878	3,645

Growth Projections for the 11-13 Population

	2010	2015	2015-2010 Change	2020	2020-2015 Change	2025	2025-2020 Change	2025-2010 Change
State	33,295	35,270	1,975	36,593	1,323	37,687	1,094	4,392
NCC	20,534	21,640	1,106	21,566	-74	21,645	79	1,111
Kent	6,529	6,772	243	7,426	654	7,790	364	1,261
Sussex	6,232	6,858	626	7,601	743	8,252	651	2,020

Growth Projections for the 14-17 Population

	2010	2015	2015-2010 Change	2020	2020-2015 Change	2025	2025-2020 Change	2025-2010 Change
State	46,935	46,302	-633	48,307	2,005	50,113	1,806	3,178
NCC	29,089	28,168	-921	28,950	782	29,284	334	195
Kent	9,175	9,199	24	9,469	270	10,235	766	1,060
Sussex	8,671	8,935	264	9,888	953	10,594	706	1,923

Source: Delaware Department of Education

Figure 3 Delaware School Districts

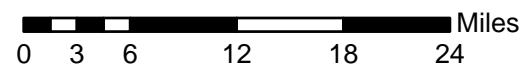


Figure 4
Delaware Public School Enrollment by County

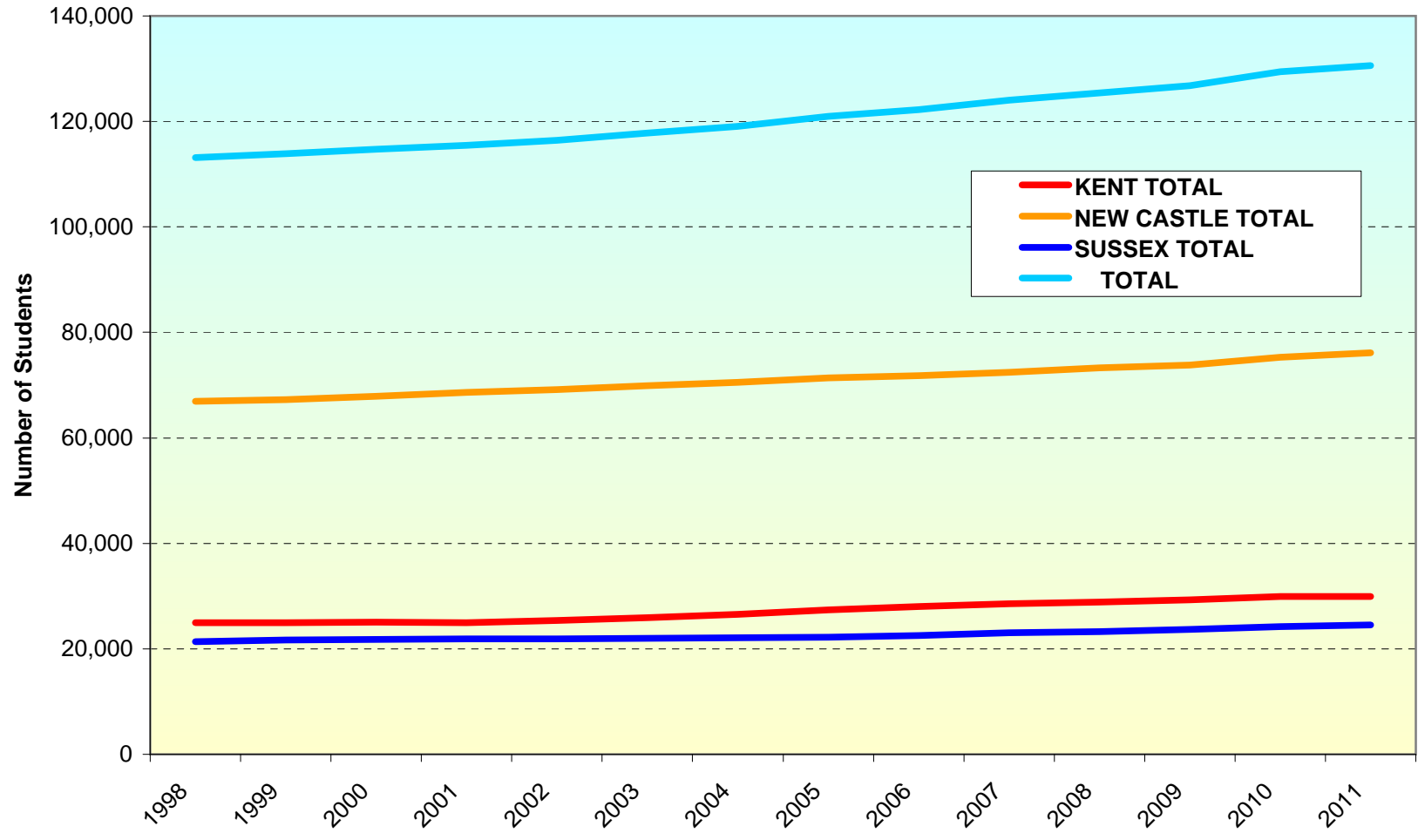


Figure 5
Percent of Delaware School Age Population by County

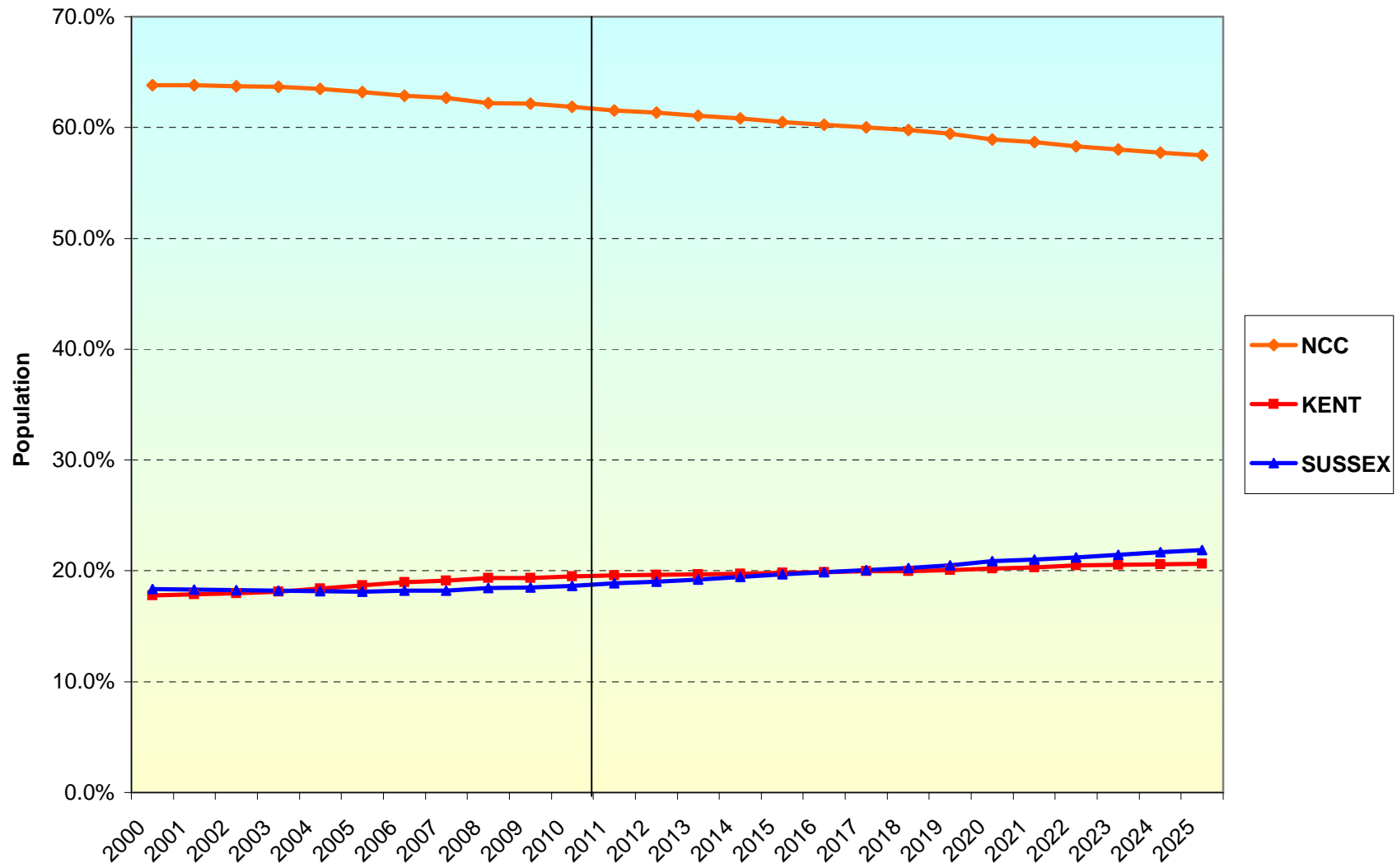


Figure 6
Delaware Projected School Age Population by Age

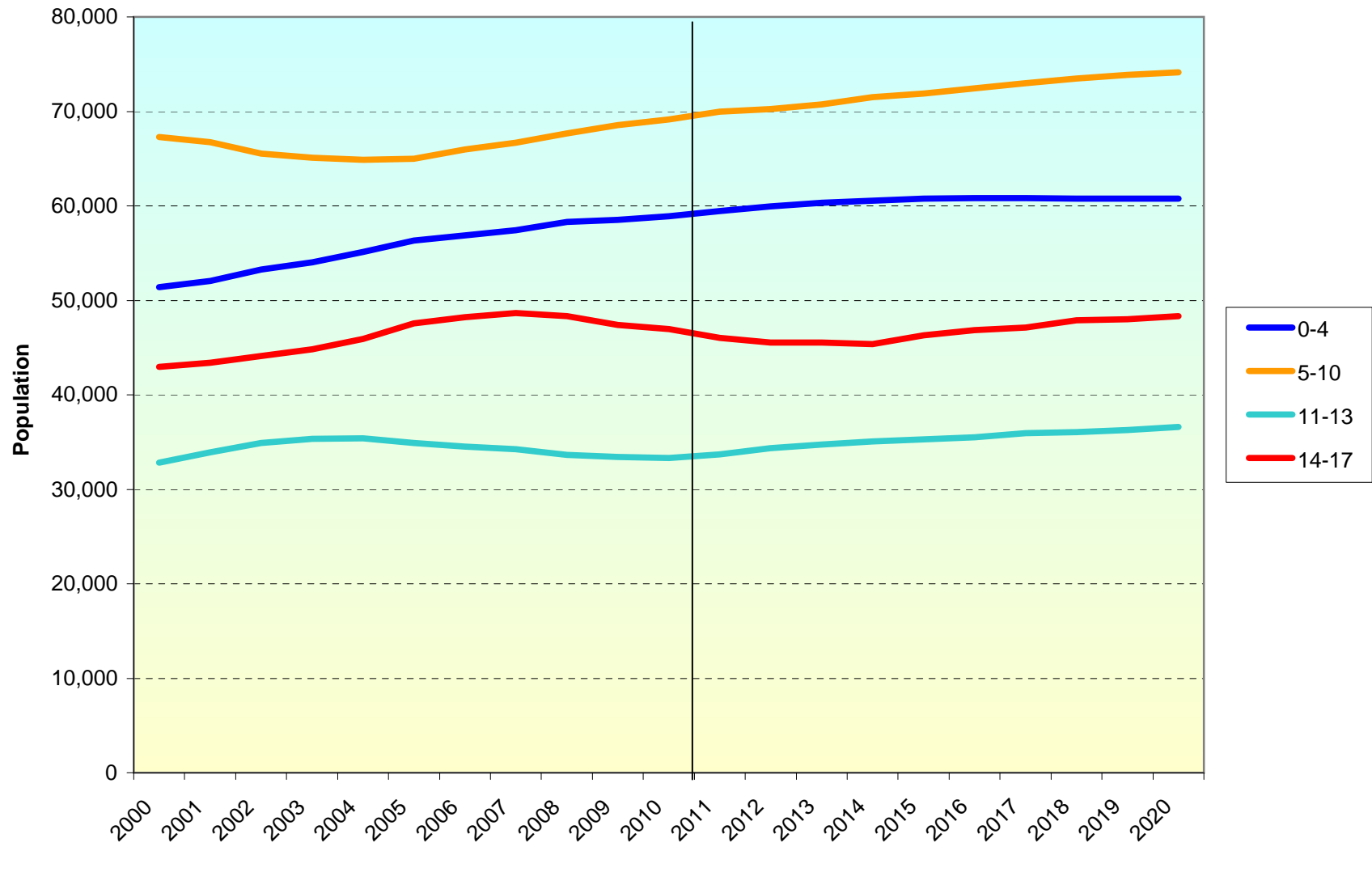


Figure 7
Delaware and Counties Age 5-17 Population Projections

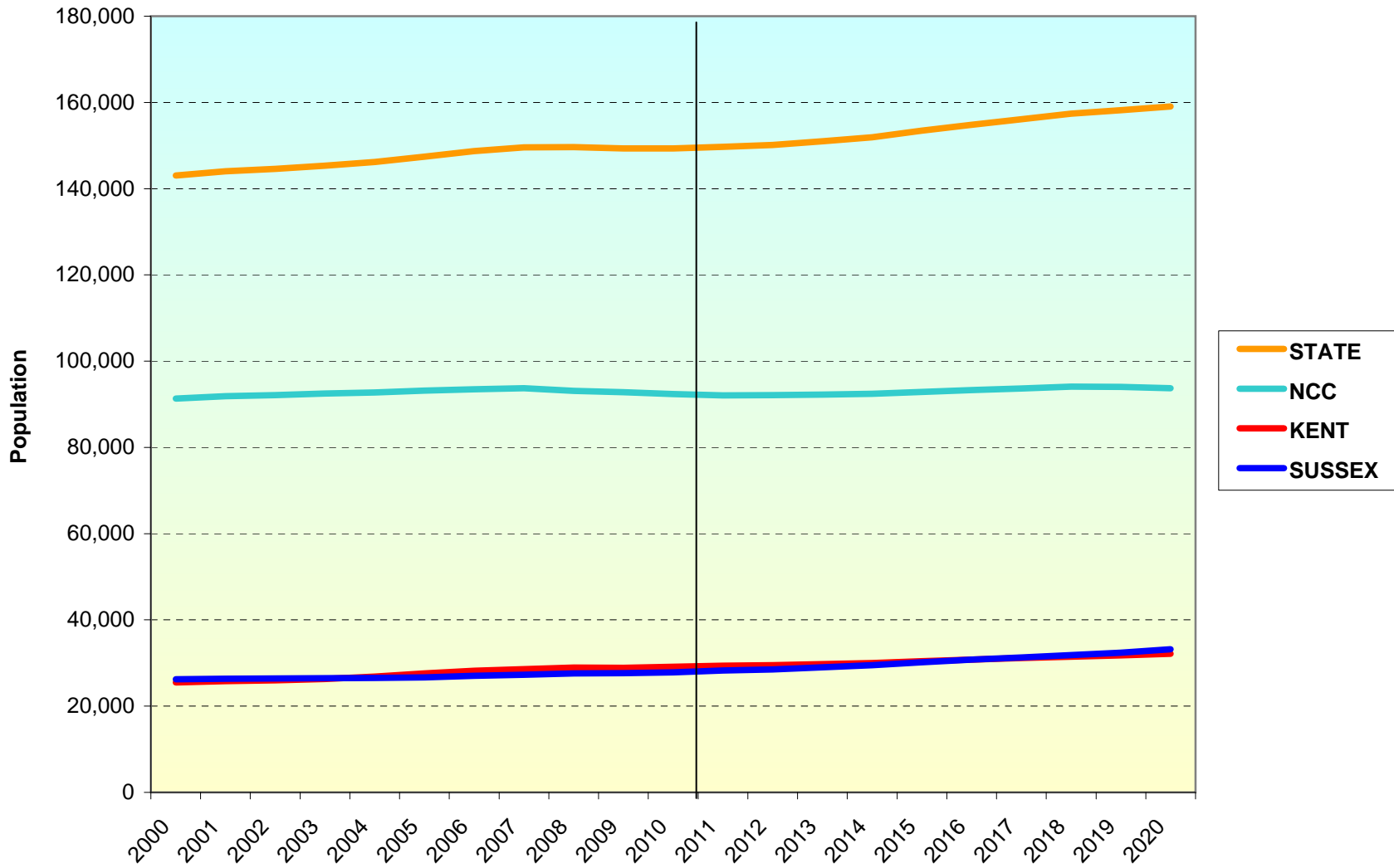


Figure 8
Number of Births by County

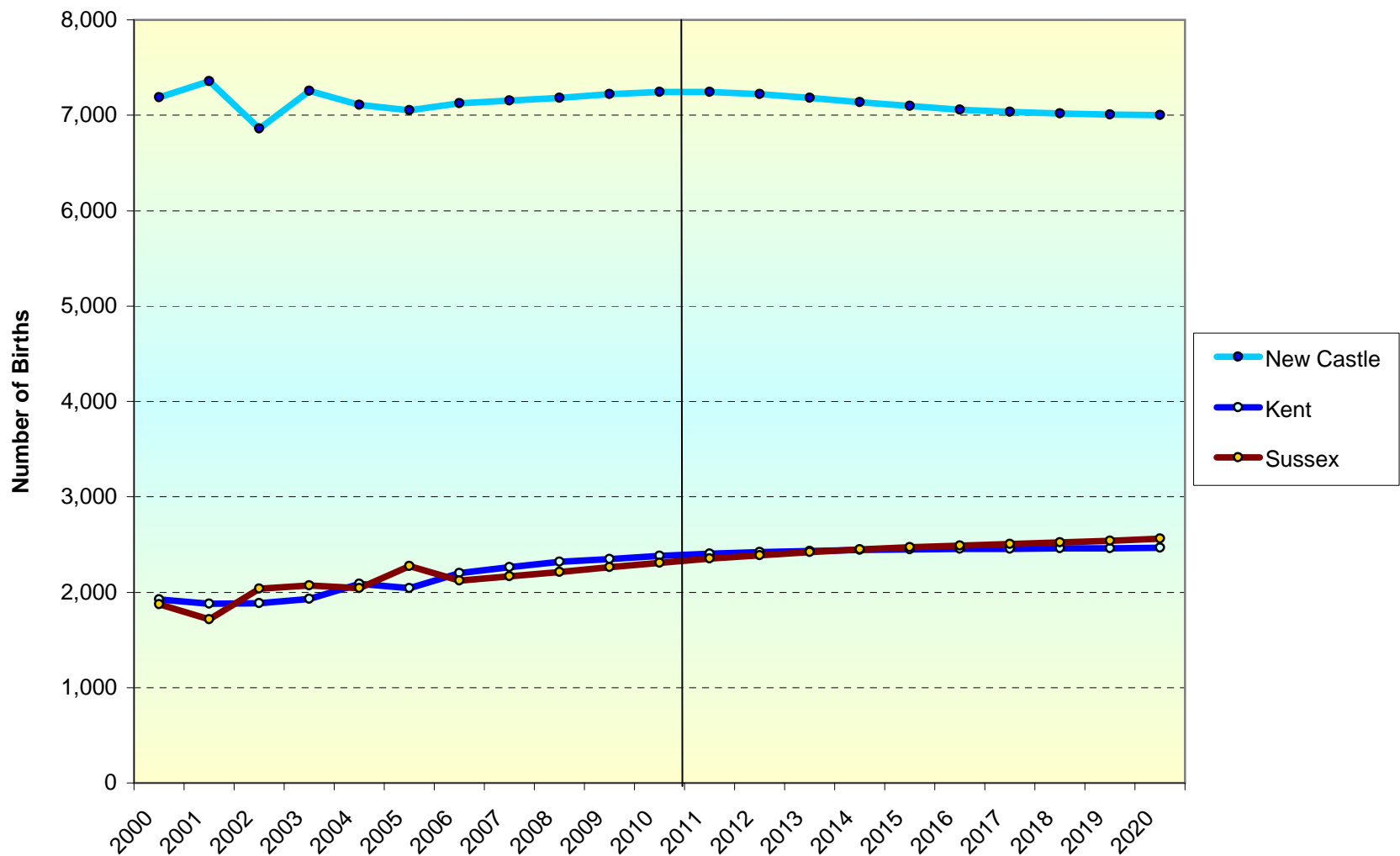
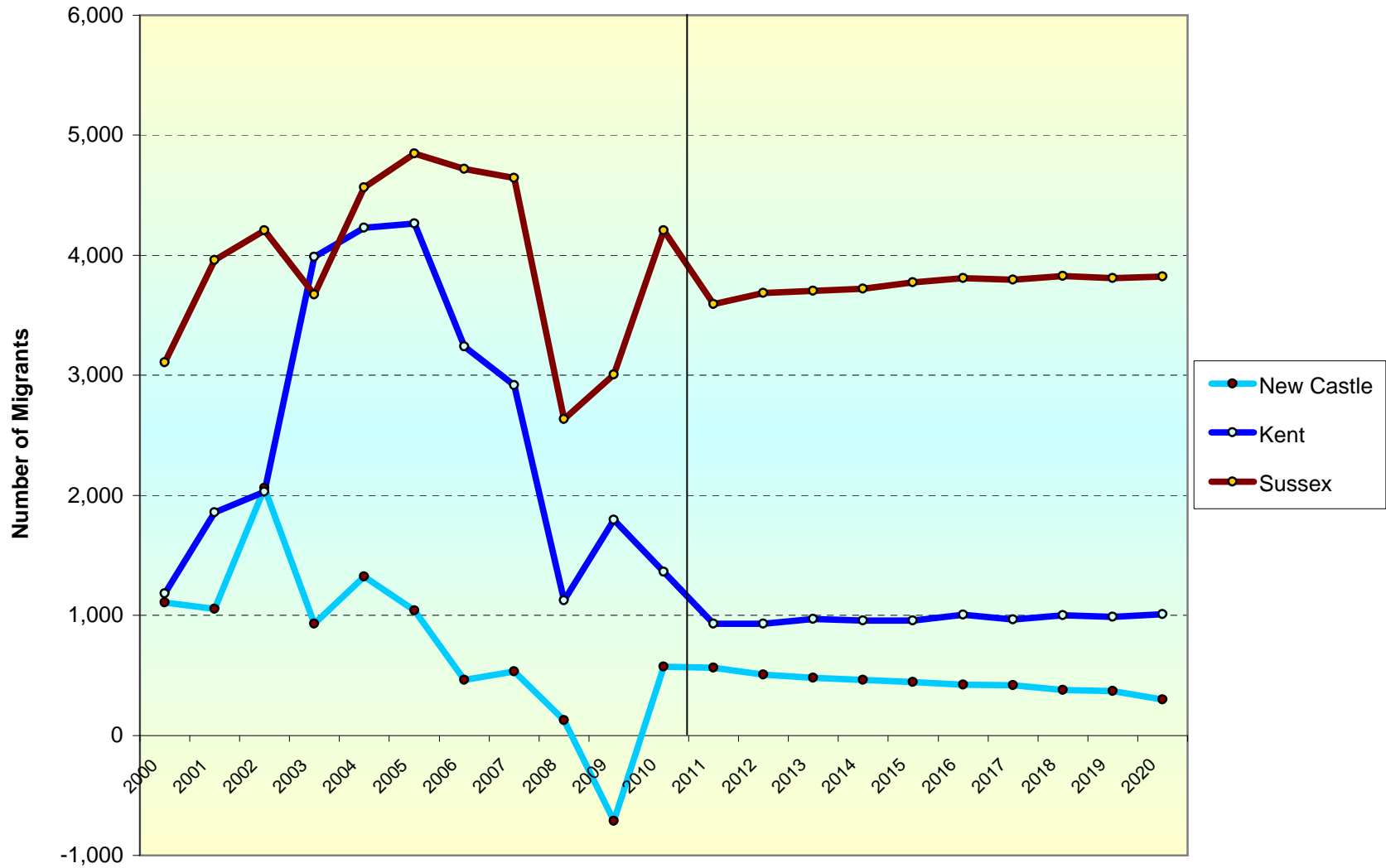


Figure 9
Net In Migration by County



County Enrollment Trends

New Castle County

Figure 10
New Castle County Public School Enrollment

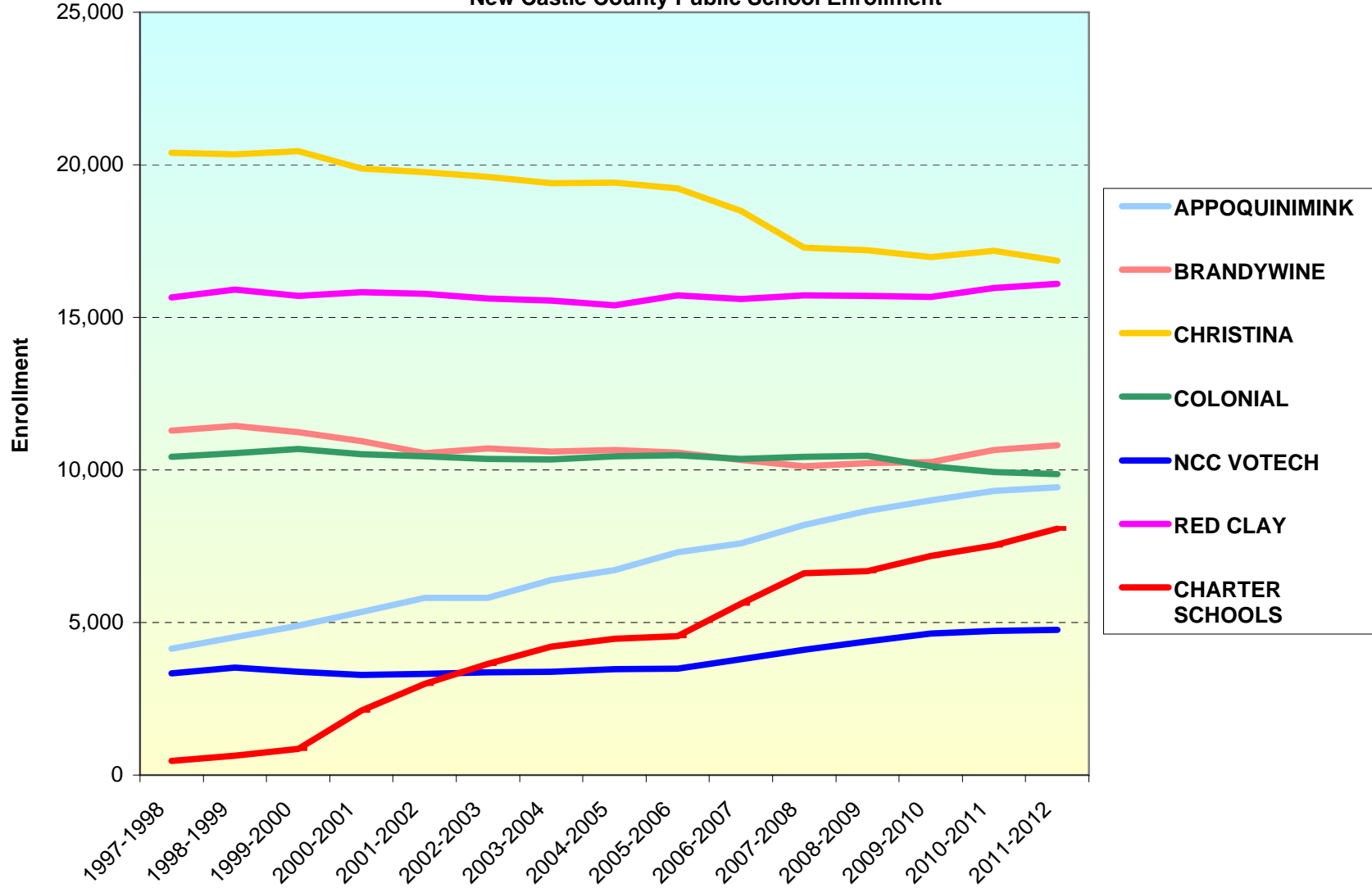


Figure 11
New Castle County Enrollment by Grade

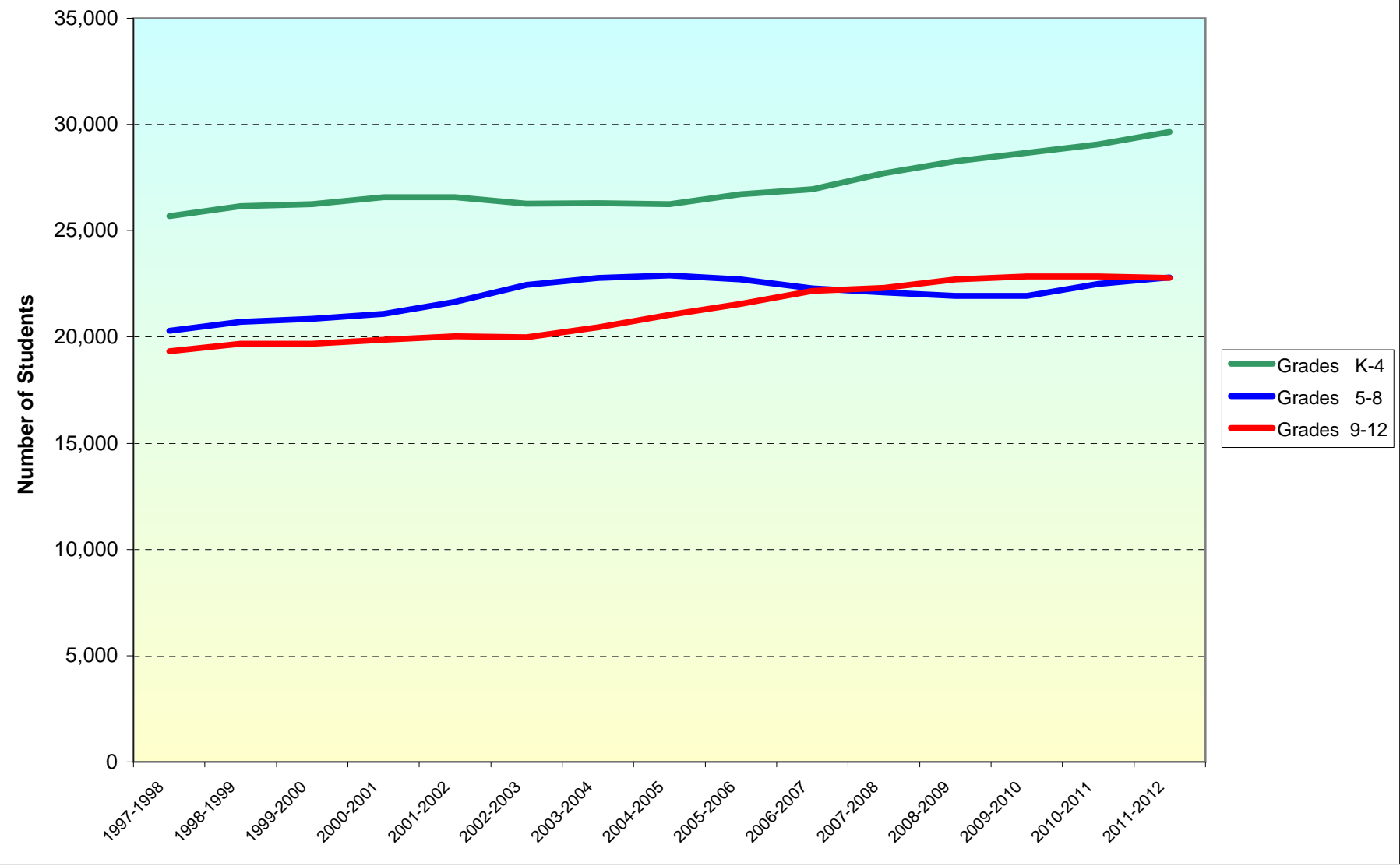
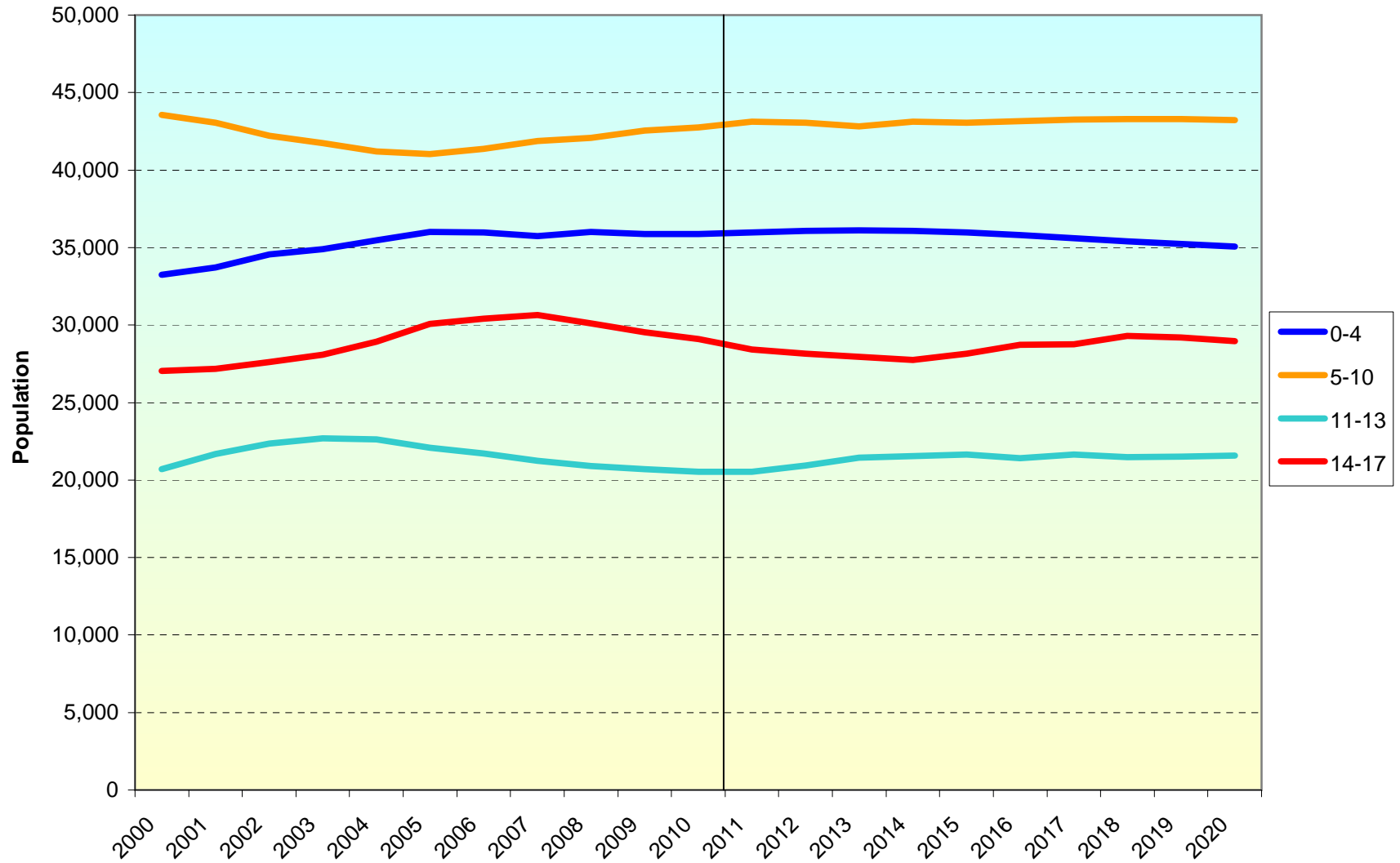


Figure 12
New Castle County Projected School Age Population by Age



County Enrollment Trends

Kent County

Figure 13
Kent County Public School Enrollment

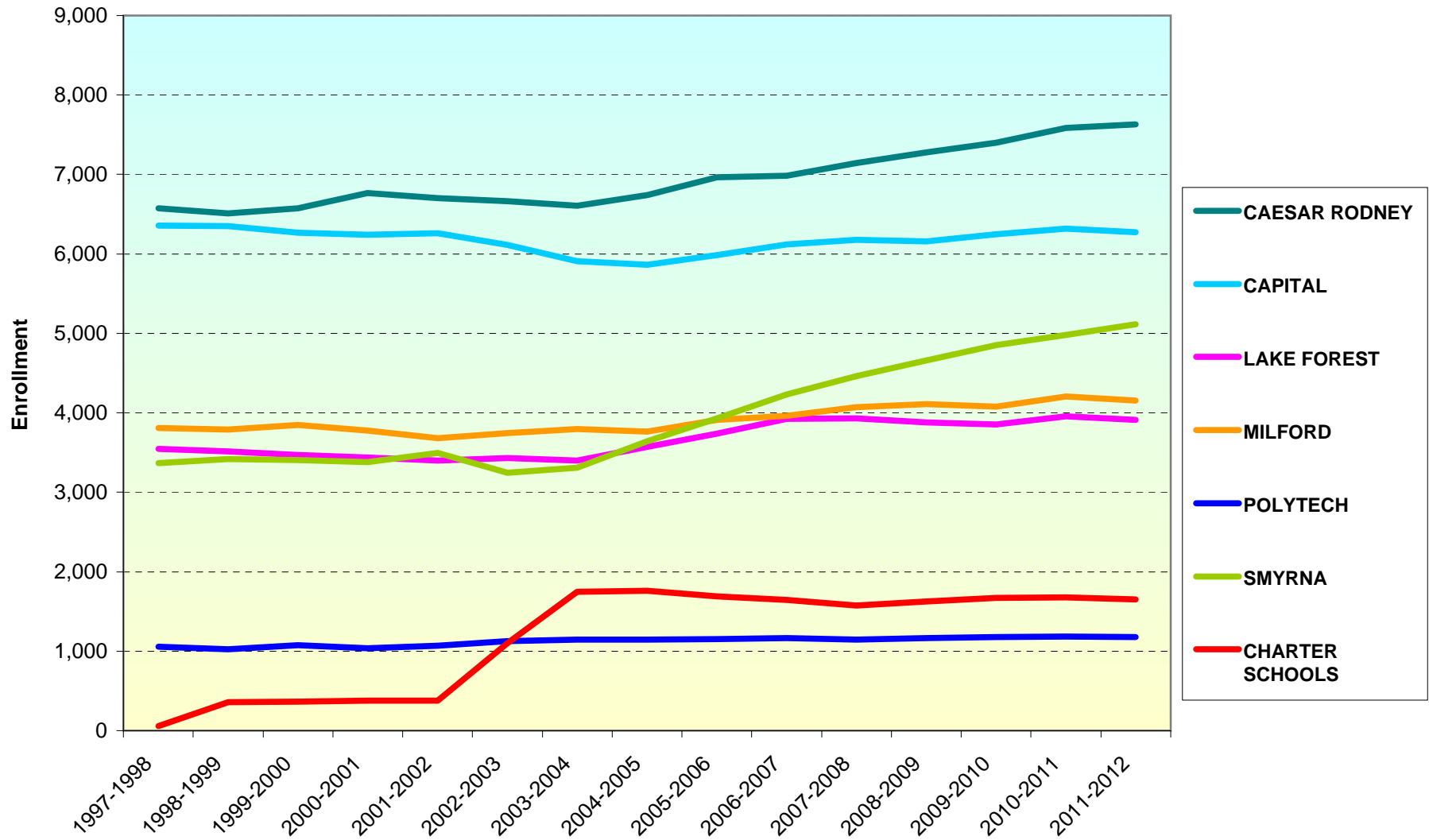


Figure 14
Kent County Enrollment by Grade

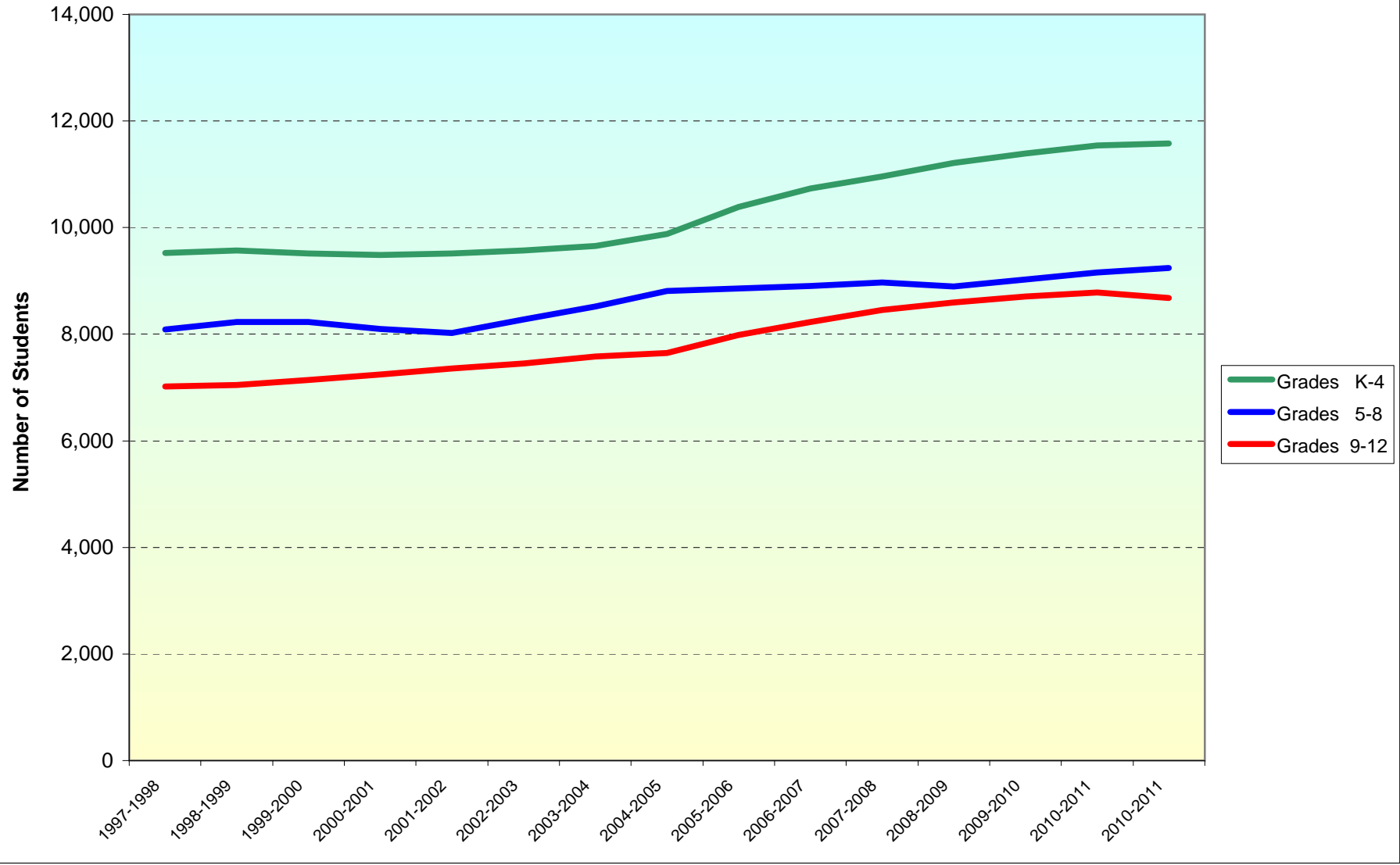
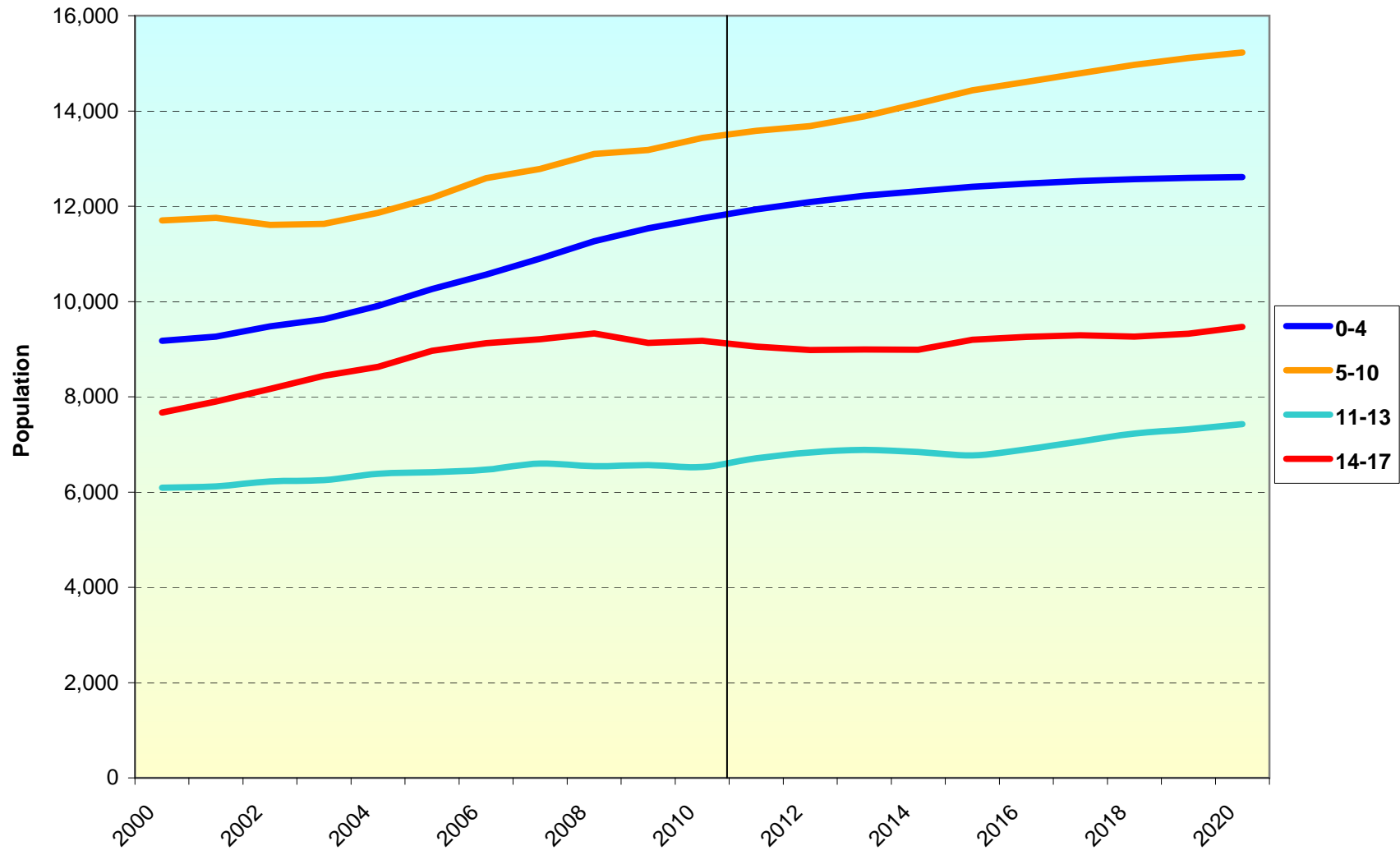


Figure 15
Kent County Projected School Age Population by Age



County Enrollment Trends

Sussex County

Figure 16
Sussex County Public School Enrollment

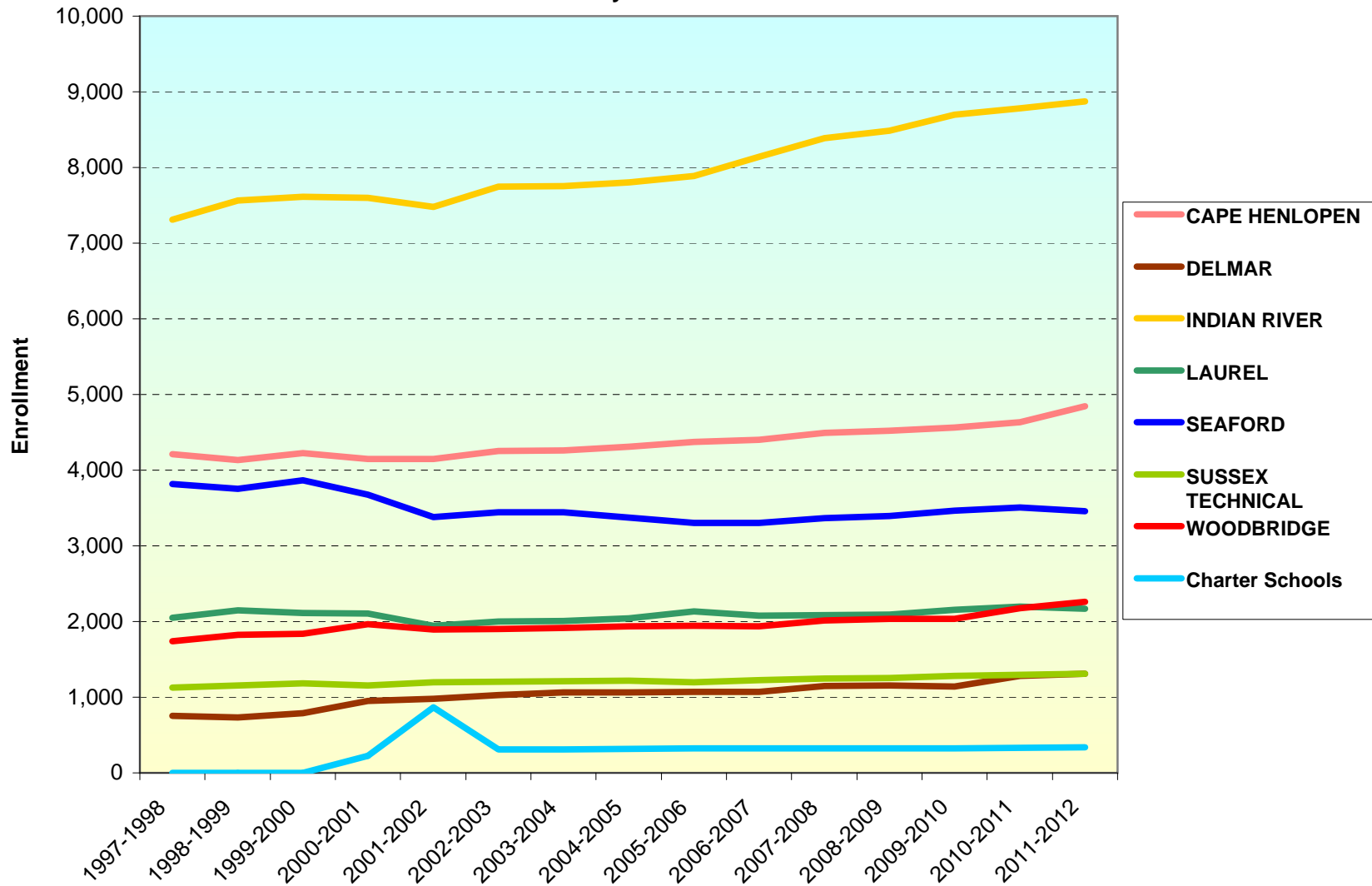


Figure 17
Sussex County Enrollment by Grade

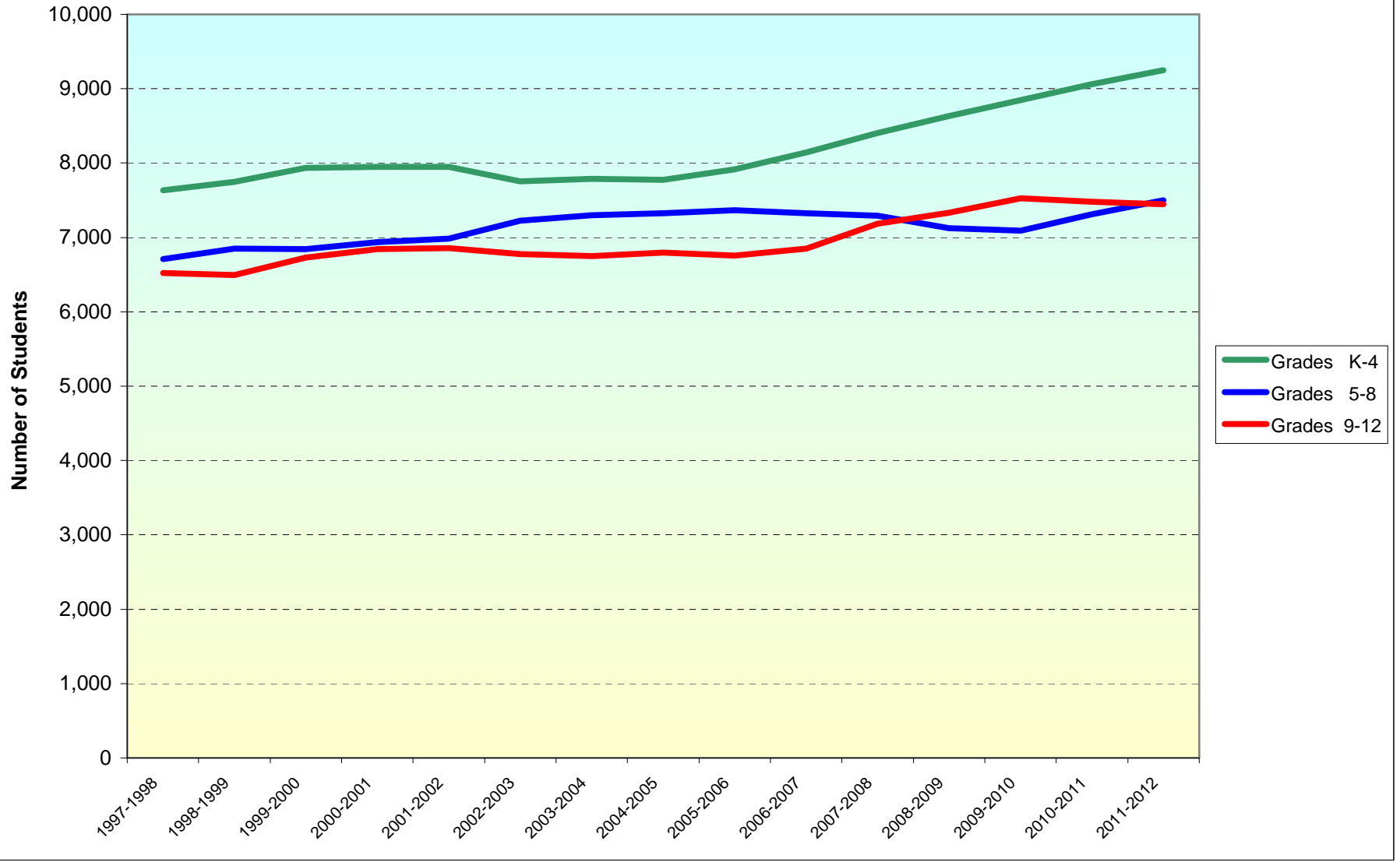


Figure 18
Sussex County Projected School Age Population by Age

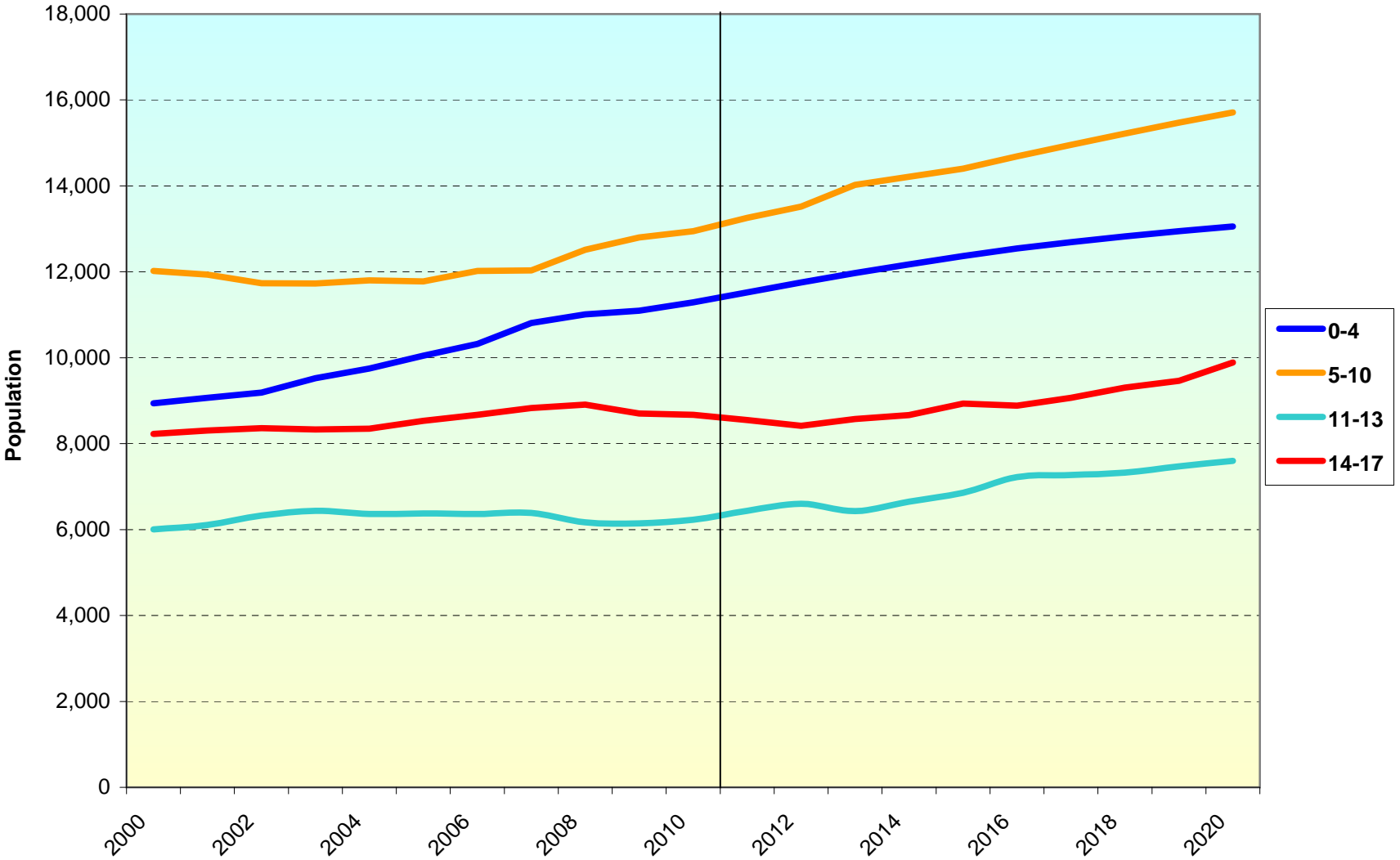


Figure 19
Sussex County Projected School Age Population by Age

