

**State of Delaware
Department of Education**

Delaware Dropouts 2005-2006

Summary Statistics

January 2007

STATE OF DELAWARE

OFFICERS OF THE DEPARTMENT OF EDUCATION

**Townsend Building
401 Federal Street, Suite 2
Dover, DE 19901**

Valerie Woodruff
Secretary of Education

Nancy J. Wilson, Ph.D.
Deputy Secretary of Education

Michael R. Owens, Ed.D.
Associate Secretary, Adult Education and Work Force Development

Robin Taylor, M.Ed.
Associate Secretary, Assessment and Accountability

Martha Brooks, Ed.D
Associate Secretary, Curriculum and Instructional Improvement

Dorcell Spence MBA
Associate Secretary, Finance and Administrative Services

DELAWARE STATE BOARD OF EDUCATION

Jean W. Allen, *President*
Richard M. Farmer, Jr., *Vice President*
Mary B. Graham, Esquire
Gregory B. Hastings
Barbara B. Rutt
Dennis J. Savage
Claibourne D. Smith, Ph.D.
Ann C. Case, Policy Analyst

The Delaware Department of Education does not discriminate in employment or educational programs, services or activities, based on race, color, national origin, sex, age or handicap in accordance with the State and Federal laws. Inquiries should be directed to Department of Education, Human Resources and Quality Management, , Dover, Delaware 19901, or by phone at 302-735-4030.

Introduction

The Delaware Department of Education report on secondary schools dropouts is from data collected annually. The data, provided by the school districts to the Department of Education, is sent back to the districts for verification before publication. Delaware collects data from all public schools including grades 7 through 12, but calculates the yearly dropout rate from grades 9 through 12, as is prescribed by the National Center for Educational Statistics (NCES). Information is gathered from families that home school their children as well as from private schools. The data from private and home schools are only used to verify the transfers from public to private and home schools. This report does not contain data reflecting private, parochial or home schooled students in Delaware.

Delaware complies with the National Center for Educational Statistics requirements for reporting and uses the *Event Rate* method for our reporting. Event Rate reporting is a snapshot which reflects the total number of students (grades 9-12) who dropped out of school in a single year divided by the fall enrollment of the same year.

Definition of Dropout: A 2005-2006 *dropout* is an individual who:

Was enrolled at the end of the 2004-2005 school year; or was enrolled at any time during the 2005-2006 school year; is not enrolled by the September 30, 2006 count; and has not been graduated from high school or completed a state or district-approved educational program; **and**

Does not meet any of the following exclusionary conditions:

- Documentation proving transfer to another public school district, private school, or state-or district-approved education program;
- Temporary absence due to suspension or school-approved illness; or
- Death.

Codes for Reasons for Withdrawal:

Academic	Employment	Marriage	Pregnancy
Behavior	Curriculum	Military	Religion
Dislike experience	Childcare	Needed at home	Substance Abuse
Economic	Transportation	Language	

Criteria for being reported as a dropout:

1. Grades included are 9 through 12. This range has been consistently used for reporting purposes since the 1979-1980 school-year. Information is also collected on dropouts from grades 7 and 8, enabling the reporting of supplemental statistics concerning these grades.
2. Summer 2006 dropouts are included (i.e., students who were expected to enroll in grades 7 -12 in the fall of 2006, but did not do so).
3. Special schools and special students are included.
- 4. If a student has moved and there is no evidence that he/she has transferred to another school, he/she is counted as a dropout.**
5. Students who transfer to James H. Groves Adult High School, and are not still enrolled by the September 30 count, are counted as dropouts from the home school.
6. Expelled students are counted as dropouts unless they have the option to return to school at the end of the disciplinary period. Those students who have the option to return but do not do so are counted as dropouts.
7. School leavers who have joined the Armed Forces are counted as dropouts.

*Criteria for **not** being included in the dropout figures:*

1. Students receiving a diploma or a “Certificate of Performance” are **not** reported as dropouts.
2. Transfers to James H. Groves Adult High School or the Groves Alternative Secondary Education Programs, or DAPI, are **not** reported as dropouts.

3. Transfers to another public or private school are **not** reported as dropouts.
4. Students enrolled in alternative education programs are **not** counted as dropouts if the program is administered or approved by the district, considered a grade 7-12 program, and leads to a recognized secondary completion credential.
5. Students who die are **not** reported as dropouts.
6. Students in correctional institutions are **not** counted as dropouts.

During the 2005-2006 school-year, 1995 of the 36,293 students enrolled in grades 9-12 dropped out of school. The 2005-2006 dropout rate was 5.5% (up slightly from 5.3% in 2004-2005). Of the 1995 dropouts, 59% were males, (an *increase* of 1.6 percentage points from 2004-2005). Females represent 41%, (a decrease of 1.6 percentage points from 2004-2005). African American drop out rate was 7.3% (an *increase* of 0.7 percentage points from 2004-2005); Hispanic dropout rate was 9.8% (a decrease of 0.6% percentage points from the 2004-2005 year and the second consecutive year of decrease); Whites/Others drop out rate was 4.2% (a decrease of 0.1 percentage point from the 2004-2005 year). The greatest number of dropouts exited school in Grade 9 (37.7%) or Grade 10 (26.3%).

This statistical summary includes a table (Table 20) on Special Education students with enrollment and dropout data at the school level. The table provides three years of data and a three-year dropout rate. The Dropout Report began showing special education data in 2002 statewide by race/ethnicity but now includes information by school and district.

Table 1
Delaware Dropouts 2005-2006
Summary Statistics
Grades 9-12

(N =1995)

	Annual Dropout Rate (%)	Percent of All Dropouts (%)
TOTAL	5.5	100
SEX		
Male	6.3	59.0
Female	4.6	41.0
RACE / ETHNICITY		
American Indian	6.5	0.5
African American	7.3	40.6
Asian	2.9	1.5
Hispanic	9.8	11.8
White	4.2	45.8
AGE		
Less than 15	8.5	3.2
Age 15	3.7	14.1
Age 16	5.9	28.3
Greater than 16	6.2	54.3

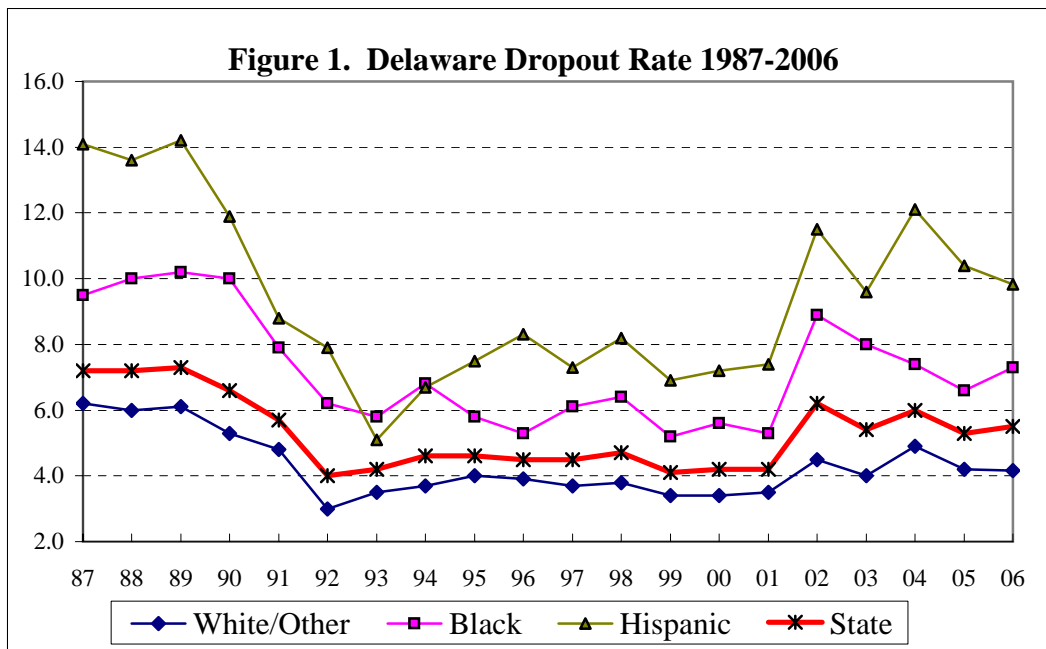


Table 2
Delaware Dropouts and Student Enrollments, 2005-2006
Grade by Race

Grade	<u>Number of Enrolled Students</u>				<u>Number of Dropouts</u>			
	Black	Hispanic	White/Other	All	Black	Hispanic	White/Other	All
9	4,037	969	6,627	11,633	316	114	322	752
10	2,810	601	5,868	9,279	231	66	229	526
11	2,209	465	5,152	7,826	158	37	222	417
12	2,035	358	5,162	7,555	104	18	178	300
Total	11,091	2,393	22,809	36,293	809	235	951	1995

Table 3
Dropout Rate and Percent of All Dropouts, 2005-2006
Grade by Race

Grade	<u>Annual Dropout Rate</u>				<u>Percent of All Dropouts</u>			
	Black	Hispanic	White/Other	All	Black	Hispanic	White/Other	All
Grade 9	7.8%	11.8%	4.9%	6.5%	15.8%	5.7%	16.1%	37.7%
Grade 10	8.2%	11.0%	3.9%	5.7%	11.6%	3.3%	11.5%	26.4%
Grade 11	7.2%	8.0%	4.3%	5.3%	7.9%	1.9%	11.1%	20.9%
Grade 12	5.1%	5.0%	3.4%	4.0%	5.2%	0.9%	8.9%	15.0%
Total	7.3%	9.8%	4.2%	5.5%	40.6%	11.8%	47.7%	100.0%

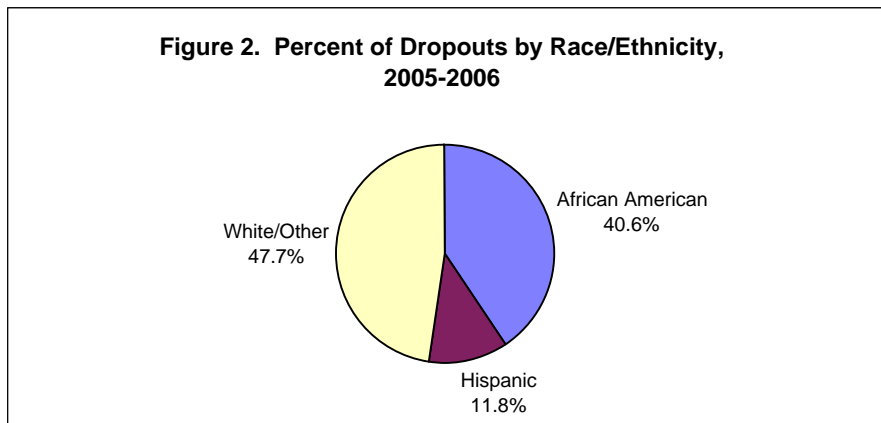


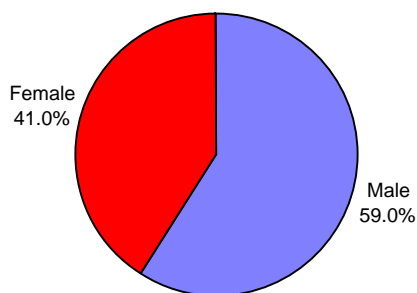
Table 4
Delaware Dropouts and Student Enrollments, 2005-2006
Gender by Race (Grades 9-12)

Gender	<u>Number of Enrolled Students</u>				<u>Number of Dropouts</u>			
	Black	Hispanic	White/Other	All	Black	Hispanic	White/Other	All
Male	5,604	1,200	11,888	18,692	475	135	567	1,177
Female	5,487	1,193	10,921	17,601	334	100	384	818
Total	11,091	2,393	22,809	36,293	809	235	951	1995

Table 5
Dropout Rate and Percent of All Dropouts, 2005-2006
Gender by Race (Grades 9-12)

Gender	<u>Annual Dropout Rate</u>				<u>Percent of All Dropouts</u>			
	Black	Hispanic	White/Other	All	Black	Hispanic	White/Other	All
Male	8.5%	11.3%	4.8%	6.3%	23.8%	6.8%	28.4%	59.0%
Female	6.1%	8.4%	3.5%	4.6%	16.7%	5.0%	19.2%	41.0%
Total	7.3%	9.8%	4.2%	5.5%	40.6%	11.8%	47.7%	100.0%

Figure 3. Percent of Dropouts by Gender, 2004-2005



**Figure 4. Percent of All Dropouts by Grade
2005-2006**

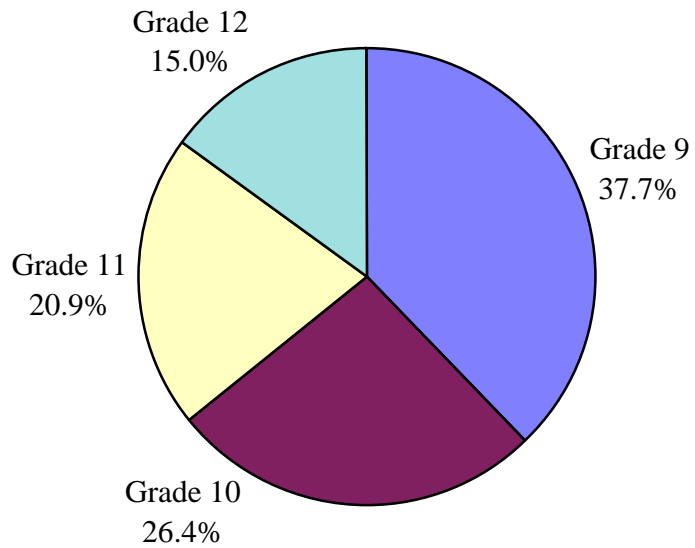


Figure 5. Dropout Rate by Gender by Race, 2005-2006

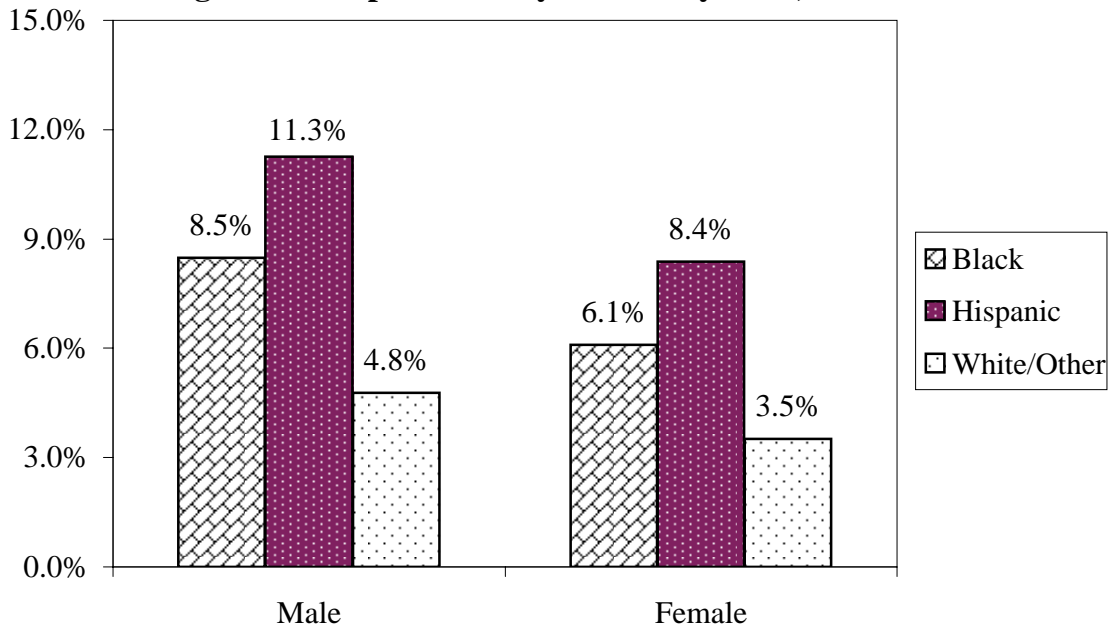


Table 7
Delaware Dropouts, 2005-2006
Grades 7-8

	Grade 7			Grade 8		
	No. of Dropouts	Students Enrolled	Rate	No. of Dropouts	Students Enrolled	Rate
Kent	37	2,263	1.6%	57	2,392	2.4%
New Castle	58	5,700	1.0%	118	6,134	1.9%
Sussex	14	1,895	0.7%	31	1,966	1.6%
State	109	9,858	1.1%	206	10,492	2.0%

Figure 7. 2005-06 Dropout Rate by Grade

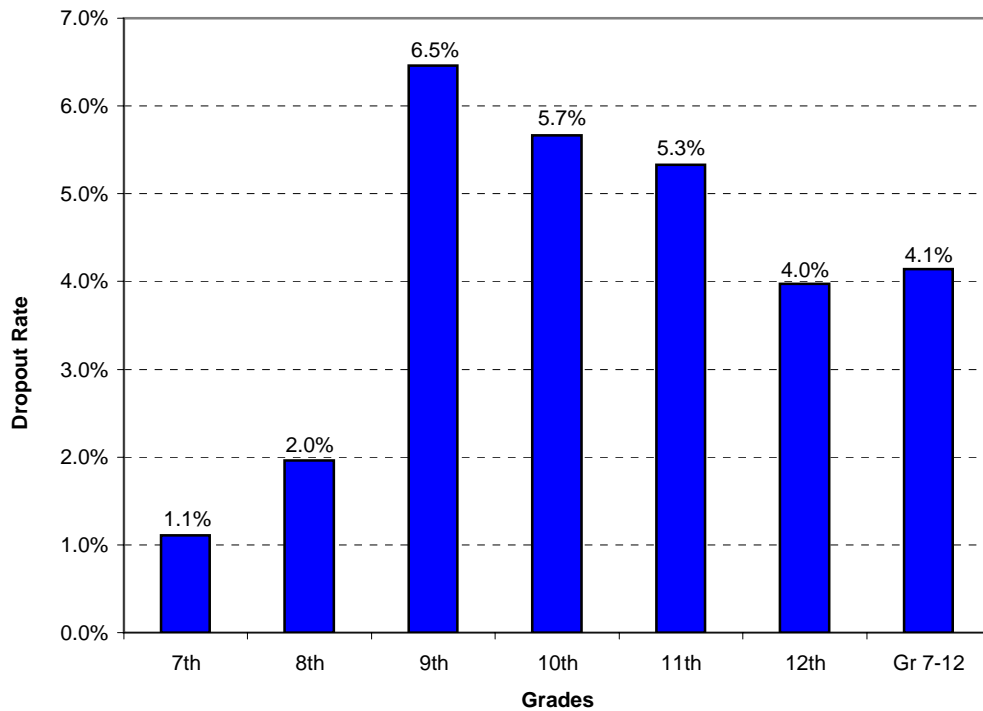


Table 8
Delaware Dropouts and Student Enrollments, 2005-2006
County by Race (Grades 9-12)

County	<u>Number of Enrolled Students</u>				<u>Number of Dropouts</u>			
	Black	Hispanic	White/Other	All	Black	Hispanic	White/Other	All
Kent	2,242	352	5,386	7,980	138	26	225	389
New Castle	7,366	1,681	12,513	21,560	543	172	474	1,189
Sussex	1,483	360	4,910	6,753	128	37	252	417
Total	11,091	2,393	22,809	36,293	809	235	951	1,995

Table 9
Dropout Rate and Percent of All Dropouts, 2005-2006
County by Race (Grades 9-12)

County	<u>Annual Dropout rate</u>				<u>Percent of All Dropouts</u>			
	Black	Hispanic	White/Other	All	Black	Hispanic	White/Other	All
Kent	6.2%	7.4%	4.2%	4.9%	6.9%	1.3%	11.3%	19.5%
New Castle	7.4%	10.2%	3.8%	5.5%	27.2%	8.6%	23.8%	59.6%
Sussex	8.6%	10.3%	5.1%	6.2%	6.4%	1.9%	12.6%	20.9%
Total	7.3%	9.8%	4.2%	5.5%	40.6%	11.8%	47.7%	100.0%

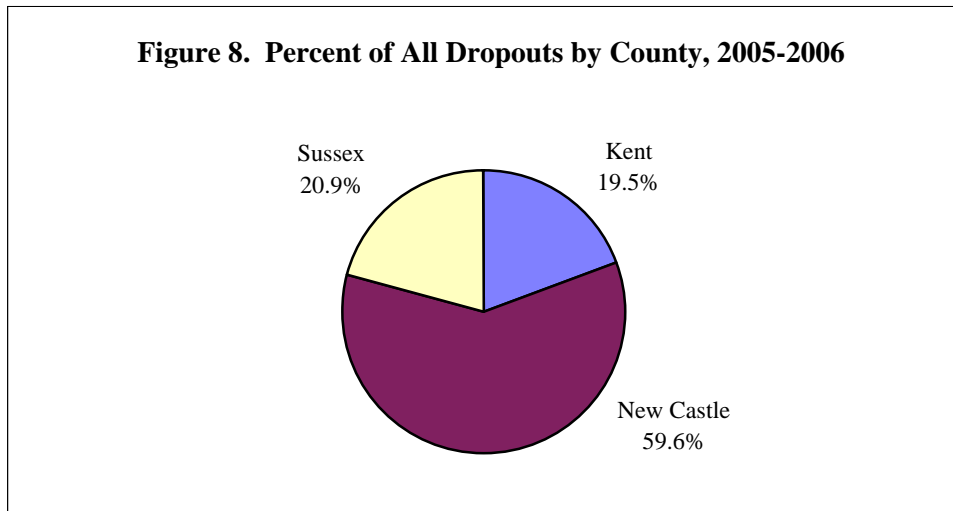


Table 10
Delaware Dropouts and Student Enrollments, 2005-2006
County by Grade

County	Number of Enrolled Students					Number of Dropouts				
	9	10	11	12	All*	9	10	11	12	All
Kent	2,607	1,875	1,800	1,699	7,981	143	87	100	59	389
New Castle	6,914	5,666	4,519	4,464	21,563	478	314	212	185	1,189
Sussex	2,116	1,738	1,507	1,392	6,753	131	125	105	56	417
Total	11,637	9,279	7,826	7,555	36,297	752	526	417	300	1,995

* Student Enrollment by county includes 4 students of unknown race.

Table 11
Dropout Rate and Percent of All Dropouts, 2005-2006
County by Grade

County	Annual Dropout rate					Percent of All Dropouts				
	9	10	11	12	All	9	10	11	12	All
Kent	5.5%	4.6%	5.6%	3.5%	4.9%	7.2%	4.4%	5.0%	3.0%	19.5%
New Castle	6.9%	5.5%	4.7%	4.1%	5.5%	24.0%	15.7%	10.6%	9.3%	59.6%
Sussex	6.2%	7.2%	7.0%	4.0%	6.2%	6.6%	6.3%	5.3%	2.8%	20.9%
Total	6.5%	5.7%	5.3%	4.0%	5.5%	37.7%	26.4%	20.9%	15.0%	100%

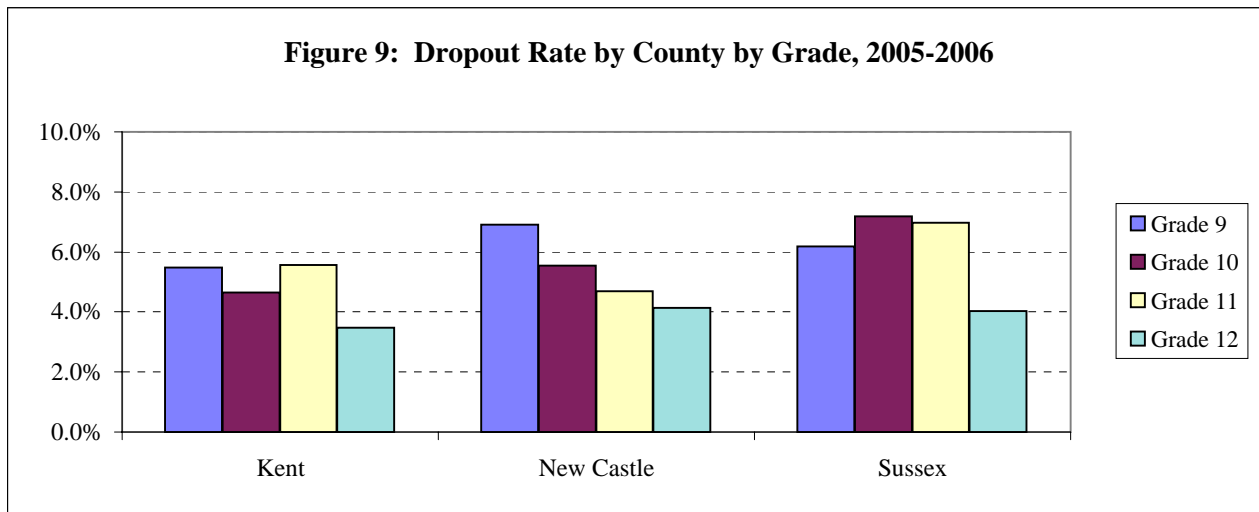


Table 12
ANNUAL DROPOUT RATES BY DISTRICT, 2003-2004 to 2005-2006
Grades 9-12

CODE	DISTRICT	2003-2004			2004-2005			2005-2006		
		TOTAL ENROLLMENT	TOTAL DROPOUTS	DROPOUT RATE	TOTAL ENROLLMENT	TOTAL DROPOUTS	DROPOUT RATE	TOTAL ENROLLMENT	TOTAL DROPOUTS	DROPOUT RATE
New Castle County		20,456	1,253	6.1	21,053	1,066	5.1	21,563	1,189	5.5
29	Appoquinimink	1,706	49	2.9	1,805	46	2.5	2,067	27	1.3
31	Brandywine	3,341	156	4.7	3,358	109	3.2	3,332	131	3.9
70	Charter School of Wilmington	918	24	2.6	936	1	0.1	935	3	0.3
33	Christina	4,834	423	8.8	4,945	379	7.7	5,096	476	9.3
34	Colonial	2,293	166	7.2	2,437	214	8.8	2,400	174	7.3
79	Delaware Military Academy	305	9	3.0	414	10	2.4	509	7	1.4
38	NCC Voc Tech	3,248	60	1.8	3,354	74	2.2	3,375	97	2.9
32	Red Clay	3,811	366	9.6	3,804	233	6.1	3,849	274	7.1
Kent County		7,581	435	5.7	7,648	406	5.3	7,981	389	4.9
10	Caesar Rodney	1,818	99	5.4	1,873	98	5.2	1,992	82	4.1
74	Campus Community	162	8	4.9	196	15	7.7	210	17	8.1
13	Capital	1,607	151	9.4	1,523	112	7.4	1,612	119	7.4
15	Lake Forest	840	39	4.6	841	42	5.0	902	48	5.3
18	Milford	1,023	63	6.2	998	55	5.5	1,005	57	5.7
39	Polytech	1,137	10	0.9	1,149	4	0.3	1,150	5	0.4
71	Positive Outcomes	82	13	15.9	78	9	11.5	80	7	8.8
24	Smyrna	912	52	5.7	990	71	7.2	1,030	54	5.2
Sussex County		6,748	415	6.1	6,796	411	6.0	6,753	417	6.2
17	Cape Henlopen	1,191	93	7.8	1,206	57	4.7	1,173	82	7.0
37	Delmar	556	36	6.5	534	19	3.6	546	17	3.1
36	Indian River	1,888	133	7.0	1,953	142	7.3	2,047	122	6.0
16	Laurel	496	36	7.3	498	59	11.8	529	62	11.7
23	Seaford	927	58	6.3	884	72	8.1	821	66	8.0
40	Sussex Voc Tech	1,194	10	0.8	1,212	18	1.5	1,185	12	1.0
35	Woodbridge	496	49	9.9	509	44	8.6	452	56	12.4
STATE		34,785	2,103	6.0	35,497	1,883	5.3	36,297	1,995	5.5

Note: Special Schools and ILCs are included in district dropout summary statistics.
2005-06 Student Enrollment by county includes 4 students of unknown race.

Table 13. GRADE 9-12 ANNUAL DROPOUT RATES BY SCHOOL, 2003-2004 THRU 2005-2006

CODE	HIGH SCHOOLS	2003-2004			2004-2005			2005-2006		
		TOTAL ENROLLMENT	TOTAL DROPOUTS	DROPOUT RATE	TOTAL ENROLLMENT	TOTAL DROPOUTS	DROPOUT RATE	TOTAL ENROLLMENT	TOTAL DROPOUTS	DROPOUT RATE
New Castle County		20,150	1,192	5.9	20,763	984	4.7	21,033	1,003	4.8
18	Middletown HS	1,706	49	2.9	1,805	46	2.5	2,067	27	1.3
26	HowardTech HS	754	19	2.5	772	10	1.3	812	7	0.9
66	Paul M. Hodgson	1,077	7	0.6	1,105	11	1.0	1,015	2	0.2
80	Delcastle Tech HS	1,417	24	1.7	1,477	12	0.8	1,476	9	0.6
190	Brandywine HS	1,272	61	4.8	1,272	26	2.0	1,191	57	4.8
194	Concord HS	1,126	42	3.7	1,136	45	4.0	1,158	39	3.4
196	Mt Pleasant HS	942	52	5.5	949	38	4.0	983	35	3.6
286	Calloway Arts Sch	364	3	0.8	373	2	0.5	388	1	0.3
290	John Dickinson HS	991	134	13.5	1,007	80	7.9	946	88	9.3
292	A. I. duPont HS	1,215	85	7.0	1,270	62	4.9	1,286	51	4.0
294	Thomas McKean HS	1,149	126	11.0	1,053	67	6.4	1,061	115	10.8
295	Charter Sch of Wilm	918	24	2.6	936	1	0.1	935	3	0.3
390	Christiana HS	1,332	135	10.1	1,452	90	6.2	1,524	106	7.0
392	Glasgow HS	1,409	141	10.0	1,510	161	10.7	1,459	139	9.5
394	Newark HS	1,894	125	6.6	1,815	121	6.7	1,854	147	7.9
490	William Penn HS	2,232	155	6.9	2,369	201	8.5	2,331	165	7.1
540	Margaret S. Sterck	47	1	2.1	48	1	2.1	38	5	13.2
578	Delaware Mil. Acad.	305	9	3.0	414	10	2.4	509	7	1.4
Kent County		7,452	418	5.6	7,507	393	5.2	7,792	366	4.7
570	Positive Outcomes	82	13	15.9	78	9	11.5	80	7	8.8
573	Campus Community	162	8	4.9	196	15	7.7	210	17	8.1
626	Caesar Rodney HS	1,738	94	5.4	1,785	98	5.5	1,904	81	4.3
648	Dover HS	1,558	139	8.9	1,470	99	6.7	1,511	97	6.4
652	POLYTECH HS	1,137	10	0.9	1,149	4	0.3	1,150	5	0.4
665	Lake Forest HS	840	39	4.6	841	42	5.0	902	48	5.3
678	Milford SR HS	1,023	63	6.2	998	55	5.5	1,005	57	5.7
688	Smyrna HS	912	52	5.7	990	71	7.2	1,030	54	5.2
Sussex County		6,614	395	6.0	6,666	396	5.9	6,619	410	6.2
726	Cape Henlopen HS	1,155	90	7.8	1,172	52	4.4	1,141	81	7.1
730	Delmar Sr HS	556	36	6.5	534	19	3.6	546	17	3.1
746	Indian River HS	730	39	5.3	758	62	8.2	771	40	5.2
748	Sussex Central Sr HS	1,075	81	7.5	1,108	72	6.5	1,188	78	6.6
756	Laurel Sr HS	481	32	6.7	489	57	11.7	515	60	11.7
766	Seaford SR HS	927	58	6.3	884	72	8.1	821	66	8.0
770	Sussex Tech HS	1,194	10	0.8	1,212	18	1.5	1,185	12	1.0
780	Woodbridge HS	496	49	9.9	509	44	8.6	452	56	12.4

Note: Special Schools and ILCs are not included in this table. All schools include grades 9 thru 12.

Figure 10. Dropout Rate by District, 2005-2006

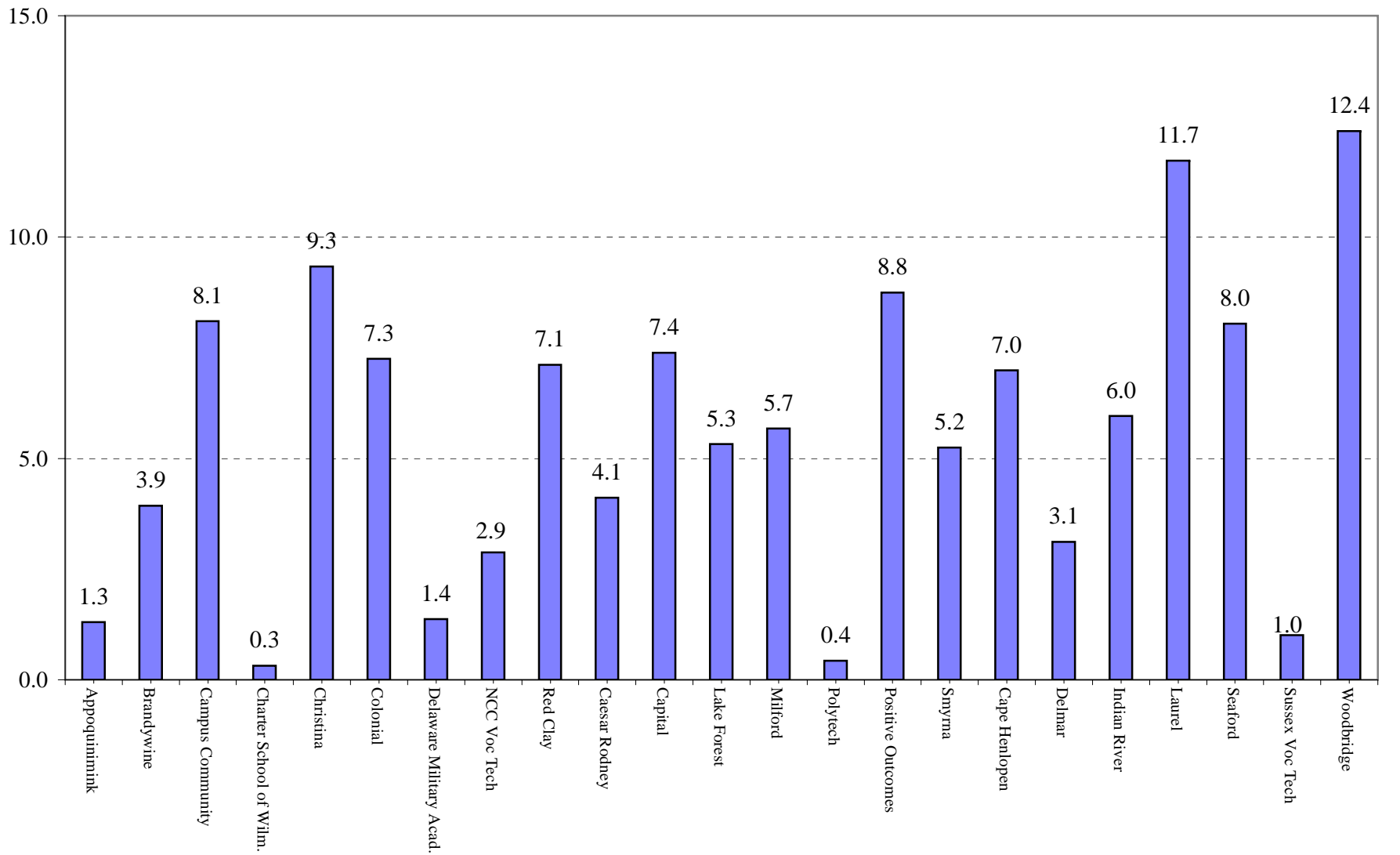


Table 14
Delaware Dropouts and Student Enrollments, 2005-2006
County by Special-Ed (Grades 9-12) ¹

County	<u>Number of Enrolled Students</u>			<u>Number of Dropouts</u>		
	Special-Ed	Regular-Ed	All ²	Special-Ed	Regular-Ed	All
Kent	1,292	6,689	7,981	76	313	389
New Castle	2,702	18,861	21,563	140	1,049	1189
Sussex	1,046	5,707	6,753	48	369	417
Total	5,040	31,257	36,297	264	1,731	1,995

¹ Special Schools and ILCs are not included in this table.

² Student Enrollment by county includes 4 students of unknown race.

Table 15
Dropout Rate and Percent of All Dropouts, 2005-2006
County by Special-Ed (Grades 9-12)

County	<u>Annual Dropout rate</u>			<u>Percent of All Dropouts</u>		
	Special-Ed	Regular-Ed	All	Special-Ed	Regular-Ed	All
New Castle	5.9%	4.7%	4.9%	3.8%	15.7%	19.5%
Kent	5.2%	5.6%	5.5%	7.0%	52.6%	59.6%
Sussex	4.6%	6.5%	6.2%	2.4%	18.5%	20.9%
Total	5.2%	5.5%	5.5%	13.2%	86.8%	100.0%

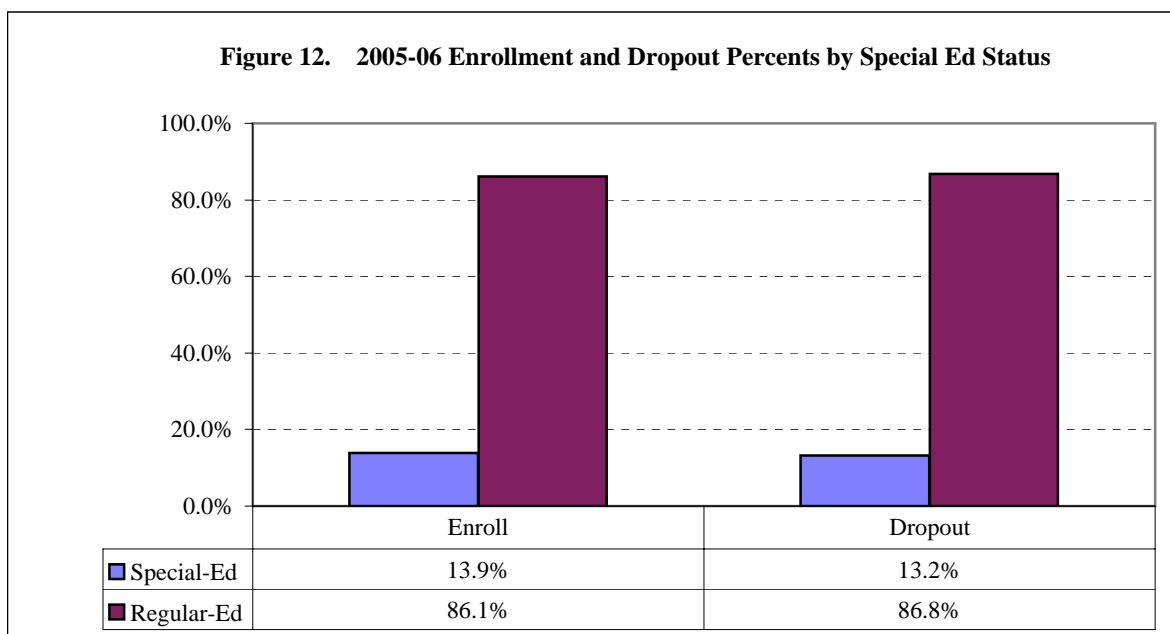


Table 16
Delaware Dropouts and Student Enrollments, 2005-2006
Race by Special-Ed (Grades 9-12) *

Group	<u>Number of Enrolled Students</u>				<u>Number of Dropouts</u>			
	Black	Hispanic	White/Other	All	Black	Hispanic	White/Other	All
Special-ED	2,152	315	2,573	5,040	117	19	128	264
Regular-ED	8,939	2,078	20,236	31,253	692	216	823	1731
Total	11,091	2,393	22,809	36,293	809	235	951	1995

* Special Schools and ILCs are not included in this table.

Table 17
Dropout Rate and Percent of All Dropouts, 2005-2006
Race by Special-Ed (Grades 9-12)

Group	<u>Annual Dropout Rate</u>				<u>Percent of All Dropouts</u>			
	Black	Hispanic	White/Other	All	Black	Hispanic	White/Other	All
Special-ED	5.4%	6.0%	5.0%	5.2%	5.9%	1.0%	6.4%	13.2%
Regular-ED	7.7%	10.4%	4.1%	5.5%	34.7%	10.8%	41.3%	86.8%
Total	7.3%	9.8%	4.2%	5.5%	40.6%	11.8%	47.7%	100.0%

Table 18
Delaware Special Education Enrollments and Dropouts by Race*
2002-2006

Year		Black	Hispanic	White/Other	All
2002	Enrolled	1,831	218	2,277	4,326
	Dropouts	128	13	83	224
	Annual Dropout Rate	7.0%	6.0%	3.6%	5.2%
	Percent of All Dropouts	6.0%	0.6%	3.9%	10.6%
2003	Enrolled	1,839	212	2,280	4,331
	Dropouts	161	19	134	314
	Annual Dropout Rate	8.8%	9.0%	5.9%	7.3%
	Percent of All Dropouts	8.7%	1.0%	7.2%	16.9%
2004	Enrolled	1,951	240	2,412	4,603
	Dropouts	163	34	197	394
	Annual Dropout Rate	8.4%	14.2%	8.2%	8.6%
	Percent of All Dropouts	7.8%	1.6%	9.4%	18.7%
2005	Enrolled	2,131	271	2,532	4,934
	Dropouts	105	19	121	245
	Annual Dropout Rate	4.9%	7.0%	4.8%	5.0%
	Percent of All Dropouts	5.6%	1.0%	6.4%	13.0%
2006	Enrolled	2,152	315	2,573	5,040
	Dropouts	117	19	128	264
	Annual Dropout Rate	5.4%	6.0%	5.0%	5.2%
	Percent of All Dropouts	5.9%	1.0%	6.4%	13.2%

* Special Schools and ILCs are not included in this table.

Table 19
Annual Delaware Dropout Rates
1979-80 Through 2005-2006

Year	White/Other	Black	Hispanic	State
1979-80	7.0	12.1	14.6	7.9
1980-81	6.9	10.7	13.7	7.8
1981-82	8.1	10.8	22.0	8.1
1982- 83	6.2	9.2	15.5	6.9
1983-84	6.2	9.2	17.2	7.2
1984-85	7.3	8.7	12.3	7.6
1985-86	7.1	8.9	11.5	7.6
1986-87	6.2	9.5	14.1	7.2
1987-88	6.0	10.0	13.6	7.2
1988-89	6.1	10.2	14.2	7.3
1989-90	5.3	10.0	11.9	6.6
1990-91	4.8	7.9	8.8	5.7
1991-92	3	6.2	7.9	4.0
1992-93	3.5	5.8	5.1	4.2
1993-94	3.7	6.8	6.7	4.6
1994-95	4	5.8	7.5	4.6
1995-96	3.9	5.3	8.3	4.5
1996-97	3.7	6.1	7.3	4.5
1997-98	3.8	6.4	8.2	4.7
1998-99	3.4	5.2	6.9	4.1
1999-00	3.4	5.6	7.2	4.2
2000-01	3.5	5.3	7.4	4.2
2001-02	4.5	8.9	11.5	6.2
2002-03	4.0	8.0	9.6	5.4
2003-04	4.9	7.4	12.1	6.0
2004-05	4.2	6.6	10.4	5.3
2005-06	4.2	7.3	9.8	5.5

Table 20. Special Education Grade 9-12 Dropouts by School, 2003-2004 through 2005-2006

CODE	HIGH SCHOOLS	2004		2005		2006		3-Yr Average Dropout Rate*
		SPECIAL ED ENROLLMENT	SPECIAL ED DROPOUTS	SPECIAL ED ENROLLMENT	SPECIAL ED DROPOUTS	SPECIAL ED ENROLLMENT	SPECIAL ED DROPOUTS	
Delaware Public Schools		4,918	398	4,871	245	4,842	270	6.2%
New Castle County		2,638	212	2,630	143	2,579	142	6.3%
18	Middletown HS	224	5	207	9	240	5	2.8%
26	HowardTech HS	104	2	106	1	110	1	1.3%
66	Paul M. Hodgson	102	1	113	0	113	3	1.2%
80	Delcastle Tech HS	205	3	219	1	215	3	1.1%
190	Brandywine HS	176	6	167	2	145	6	2.9%
194	Concord HS	142	5	138	3	121	6	3.5%
196	Mt Pleasant HS	139	11	137	4	121	7	5.5%
286	Calloway Arts Sch	20	0	19	0	25	0	0.0%
290	John Dickinson HS	175	21	173	8	108	4	7.2%
292	A. I. duPont HS	79	11	94	6	85	9	10.1%
294	Thomas McKean HS	129	26	130	8	142	9	10.7%
295	Charter Sch of Wilm	2	0	0	0	1	0	
390	Christiana HS	157	19	185	6	207	13	6.9%
392	Glasgow HS	171	25	167	26	152	17	13.9%
394	Newark HS	237	19	227	15	241	13	6.7%
490	William Penn HS	324	27	305	35	303	19	8.7%
514	John G. Leach School	24	1	28	0	29	0	1.2%
518	Brandywine ILC	1	1	1	0			
522	Commodore MacDonough	37	8	40	10	41	8	22.0%
527	Central School (PACE)	74	10	77	6	67	4	9.2%
530	First State School	16	1	17	1	17	0	4.0%
534	Sarah Pyle Academy					12	4	
537	Douglass Alternative School	30	10	13	0	29	6	22.2%
540	Margaret S. Sterck	47	0	47	1	37	5	4.6%
578	Delaware Mil. Acad.	23	0	20	1	18	0	1.6%
Kent County		1,296	106	1,237	62	1,274	79	6.5%
570	Positive Outcomes	38	1	42	3	41	2	5.0%
573	Campus Community	13	0	18	0	23	5	9.3%
626	Caesar Rodney HS	261	19	233	8	253	8	4.7%
630	John S. Charlton School	80	5	88	0	88	1	2.3%
648	Dover HS	248	28	244	13	248	14	7.4%
652	Polytech HS	127	3	103	1	102	1	1.5%
655	Kent Secondary ILC	49	10	53	7	77	17	19.0%
665	Lake Forest HS	128	7	125	1	139	9	4.3%
678	Milford SR HS	164	20	167	15	148	12	9.8%
688	Smyrna HS	188	13	164	14	155	10	7.3%
Sussex County		984	80	1,004	40	989	49	5.7%
689	Allen (Richard) School	21	9	24	6	31	3	23.7%
726	Cape Henlopen HS	150	22	145	2	150	10	7.6%
728	Sussex Consortium	36	2	34	0	32	1	
730	Delmar Sr HS	60	5	70	0	78	1	2.9%
746	Indian River HS	96	10	98	5	106	4	6.3%
748	Sussex Central Sr HS	165	7	175	8	189	13	5.3%
750	Ennis (Howard T) School	62	3	63	1			
756	Laurel Sr HS	68	3	76	6	79	5	6.3%
765	Western Sussex Academy	15	3	9	1	14	2	
766	Seaford SR HS	110	5	113	4	105	4	4.0%
770	Sussex Tech HS	143	4	145	2	153	2	1.8%
780	Woodbridge HS	58	7	52	5	52	4	9.9%

* Dropout Rates are calculated for schools with 3 years of data, and three-year SPED enrollment of at least 50 students.

DEPARTMENT OF EDUCATION

Annual Dropout Report Summary
Delaware Public Schools

Compiled by

Regina Greenwald
Education Associate, School to Work Transition

Melvin D'Souza, Ph.D.
Education Associate, Data Analysis

Angela Yun,
Secretary, CTE & School Climate Workgroup

**Special thanks to all of the data providers in Delaware's schools and
The Dropout Prevention Committee
With the support of The Department of Education's Technology Management and
Design workgroup, Patrick Dunn, Director**