

**State of Delaware
Department of Education**

Delaware Dropouts 2004-2005

Summary Statistics

February 2006

STATE OF DELAWARE

OFFICERS OF THE DEPARTMENT OF EDUCATION

**Townsend Building
401 Federal Street, Suite 2
Dover, DE 19901**

Valerie Woodruff
Secretary of Education

Nancy J. Wilson, Ph.D.
Deputy Secretary of Education

Lewis L. Atkinson III, Ed.D.
Associate Secretary, Adult Education and Work Force Development

Robin Taylor, M.Ed.
Associate Secretary, Assessment and Accountability

Martha Brooks, Ed.D
Associate Secretary, Curriculum and Instructional Improvement

Dorcell Spence MBA
Associate Secretary, Finance and Administrative Services

DELAWARE STATE BOARD OF EDUCATION

Jean W. Allen, *President*
Richard M. Farmer, Jr., *Vice President*
Mary B. Graham, Esquire
Gregory B. Hastings
Barbara B. Rutt
Dennis J. Savage
Claibourne D. Smith, Ph.D.
Ann C. Case, Policy Analyst

The Delaware Department of Education does not discriminate in employment or educational programs, services or activities, based on race, color, national origin, sex, age or handicap in accordance with the State and Federal laws. Inquires should be directed to Department of Education, Human Resources and Quality Management, , Dover, Delaware 19901, or by phone at 302-735-4030.

Introduction

The Delaware Department of Education report on secondary schools dropouts is from data collected annually. The data, provided by the school districts to the Department of Education, is sent back to the districts for verification before publication. Delaware collects data from all public schools including grades 7 through 12, but calculates the yearly dropout rate from grades 9 through 12, as is prescribed by the National Center for Educational Statistics (NCES). Information is gathered from families that home school their children as well as from private schools. The data from private and home schools are only used to verify the transfers from public to private and home schools. This report does not contain data reflecting private, parochial or home schooled students in Delaware.

Delaware complies with the National Center for Educational Statistics requirements for reporting and uses the *Event Rate* method for our reporting. Event Rate reporting is a snapshot which reflects the total number of students (grades 9-12) who dropped out of school in a single year divided by the fall enrollment of the same year.

Definition of Dropout: A 2004-2005 *dropout* is an individual who not enrolled in school and who:

Was enrolled at the end of the 2003-2004 school year; or was enrolled at any time during the 2004-2005 school year; is not enrolled by the September 30, 2005 count; and has not been graduated from high school or completed a state or district-approved educational program; **and**

Does not meet any of the following exclusionary conditions:

- Documentation proving transfer to another public school district, private school, or state-or district-approved education program;
- Temporary absence due to suspension or school-approved illness; or
- Death.

Codes for Reasons for Withdrawal:

Academic	Employment	Marriage	Pregnancy
Behavior	Curriculum	Military	Religion
Dislike experience	Childcare	Needed at home	Substance Abuse
Economic	Transportation	Language	

Criteria for being reported as a dropout:

1. Grades included are 9 through 12. This range has been consistently used for reporting purposes since the 1979-1980 school-year. Information is also collected on dropouts from grades 7 and 8, enabling the reporting of supplemental statistics concerning these grades.
2. Summer 2005 dropouts are included (i.e., students who were expected to enroll in grades 7 -12 in the fall of 2005, but did not do so).
3. Special schools and special students are included.
- 4. If a student has moved and there is no evidence that he/she has transferred to another school, he/she is counted as a dropout.**
5. Students who transfer to James H. Groves Adult High School, and are not still enrolled by the September 30 count, are counted as dropouts from the home school.
6. Expelled students are counted as dropouts unless they have the option to return to school at the end of the disciplinary period. Those students who have the option to return but do not do so are counted as dropouts
7. School leavers who have joined the Armed Forces are counted as dropouts.

*Criteria for **not** being included in the dropout figures:*

1. Students receiving a diploma or a “Certificate of Performance” are **not** reported as dropouts.
2. Transfers to James H. Groves Adult High School or the Groves Alternative Secondary Education Programs, or DAPI, are **not** reported as dropouts.

3. Transfers to another public or private school are **not** reported as dropouts.
4. Students enrolled in alternative education programs are **not** counted as dropouts if the program is administered or approved by the district, considered a grade 7-12 program, and leads to a recognized secondary completion credential.
5. Students who die are **not** reported as dropouts.
6. Students who are in correctional institutions are **NOT** counted as dropouts.

During the 2004-2005 school-year, 1883 of the 35,486 students enrolled in grades 9-12 dropped out of school. The 2004-2005 dropout rate was 5.3% (down from 6.0% in 2003-2004). Of the 1883 dropouts, 57.4% were males, (a *decrease* of 0.6 percentage points from 2003-2004) which was the second year of decrease in male dropouts. Females represent 42.6%, (an increase of 0.6 percentage points from 2003-2004). African American drop out rate was 6.6% (a *decrease* of 1.2 percentage points from 2003-2004); Hispanic dropout rate was 10.4% (a decrease of 2.3% percentage points from the 2003-2004 year); Whites/Others drop out rate was 4.3% (a decrease of 0.7 percentage points from the 2003-2004 year). The greatest number of dropouts exited school in 9th or 10th grade (57.8%).

Beginning with this report, special education data will be expanded. The report includes a table (Table 20) on special education students with enrollment and dropout data at the school level. The Dropout Report began showing special education data in 2002 statewide by race/ethnicity but will begin to include information by district.

Table 1
Delaware Dropouts 2004-2005
Summary Statistics
Grades 9-12

(N =1885)

	Annual Dropout Rate (%)	Percent of All Dropouts (%)
TOTAL	5.3	100
SEX		
Male	6.0	57.4
Female	4.6	42.6
RACE / ETHNICITY		
American Indian	3.3	0.2
African American	6.6	37.4
Asian	2.5	1.3
Hispanic	10.4	11.7
White	4.3	49.3
AGE		
Less than 15	3.0	28.5
Age 15	6.0	29.2
Age 16	7.0	24.8
Greater than 16	19.5	17.3

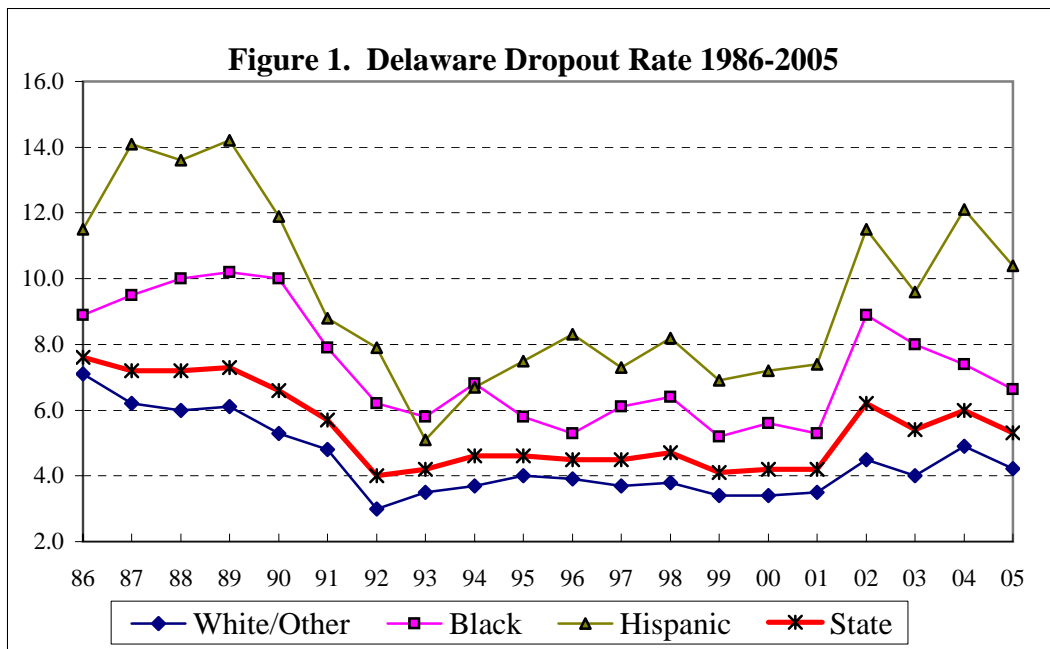


Table 2
Delaware Dropouts and Student Enrollments, 2004-2005
Grade by Race

Grade	<u>Number of Enrolled Students</u>				<u>Number of Dropouts</u>			
	Black	Hispanic	White/Other	All	Black	Hispanic	White/Other	All
9	3,688	838	6,720	11,246	295	113	399	807
10	2,772	551	5,757	9,080	188	54	227	469
11	2,100	405	5,266	7,771	129	40	179	348
12	2,079	333	4,977	7,389	93	14	152	259
Total	10,639	2,127	22,720	35,486	705	221	957	1883

Table 3
Dropout Rate and Percent of All Dropouts, 2004-2005
Grade by Race

Grade	<u>Annual Dropout Rate</u>				<u>Percent of All Dropouts</u>			
	Black	Hispanic	White/Other	All	Black	Hispanic	White/Other	All
Grade 9	8.0%	13.5%	5.9%	7.2%	15.7%	6.0%	21.2%	42.9%
Grade 10	6.8%	9.8%	3.9%	5.2%	10.0%	2.9%	12.1%	24.9%
Grade 11	6.1%	9.9%	3.4%	4.5%	6.9%	2.1%	9.5%	18.5%
Grade 12	4.5%	4.2%	3.1%	3.5%	4.9%	0.7%	8.1%	13.8%
Total	6.6%	10.4%	4.2%	5.3%	37.4%	11.7%	50.8%	100.0%

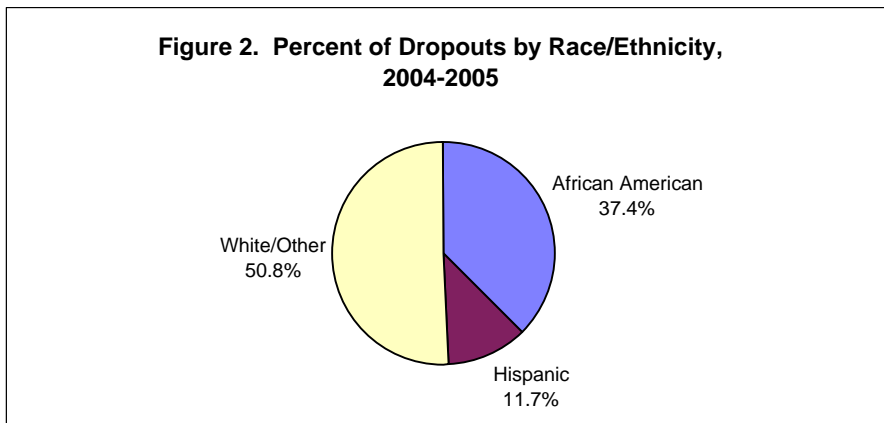


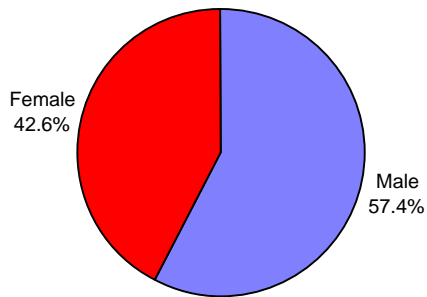
Table 4
Delaware Dropouts and Student Enrollments, 2004-2005
Gender by Race (Grades 9-12)

Gender	<u>Number of Enrolled Students</u>				<u>Number of Dropouts</u>			
	Black	Hispanic	White/Other	All	Black	Hispanic	White/Other	All
Male	5,310	1101	11,720	18,131	380	125	576	1081
Female	5,329	1026	11,000	17,355	325	96	381	802
Total	10,639	2,127	22,720	35,486	705	221	957	1883

Table 5
Dropout Rate and Percent of All Dropouts, 2004-2005
Gender by Race (Grades 9-12)

Gender	<u>Annual Dropout Rate</u>				<u>Percent of All Dropouts</u>			
	Black	Hispanic	White/Other	All	Black	Hispanic	White/Other	All
Male	7.2%	11.4%	4.9%	6.0%	20.2%	6.6%	30.6%	57.4%
Female	6.1%	9.4%	3.5%	4.6%	17.3%	5.1%	20.2%	42.6%
Total	6.6%	10.4%	4.2%	5.3%	37.4%	11.7%	50.8%	100.0%

Figure 3. Percent of Dropouts by Gender, 2004-2005



**Figure 4. Percent of All Dropouts by Grade
2004-2005**

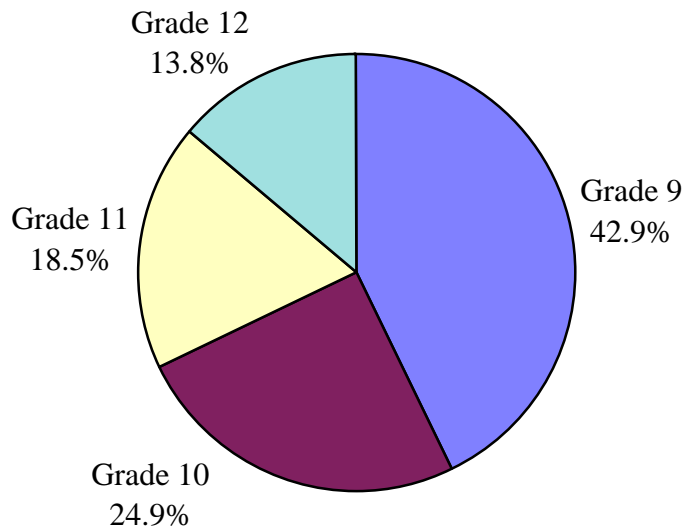


Figure 5. Dropout Rate by Gender by Race, 2004-2005

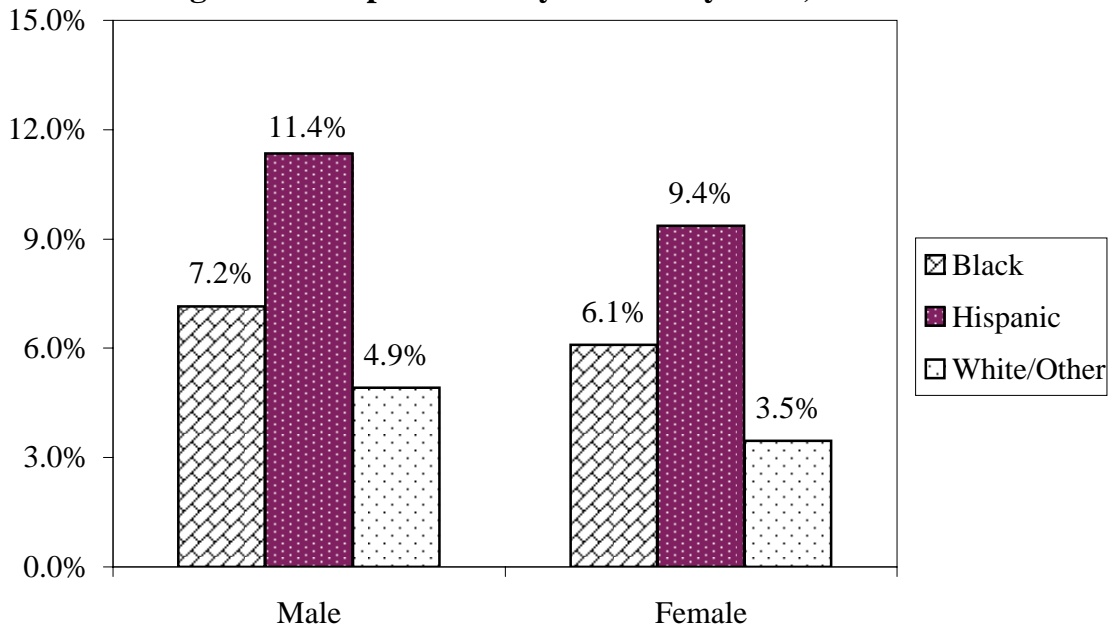


Table 7
Delaware Dropouts, 2004-2005
Grades 7-8

	Grade 7			Grade 8		
	No. of Dropouts	Students Enrolled	Rate	No. of Dropouts	Students Enrolled	Rate
Kent	7	2,284	0.3%	20	2,298	0.9%
New Castle	8	5,728	0.1%	20	6,252	0.3%
Sussex	4	1,856	0.2%	13	1,946	0.7%
State	19	9,868	0.2%	53	10,496	0.5%

Figure 7. 2004-05 Dropout Rate by Grade

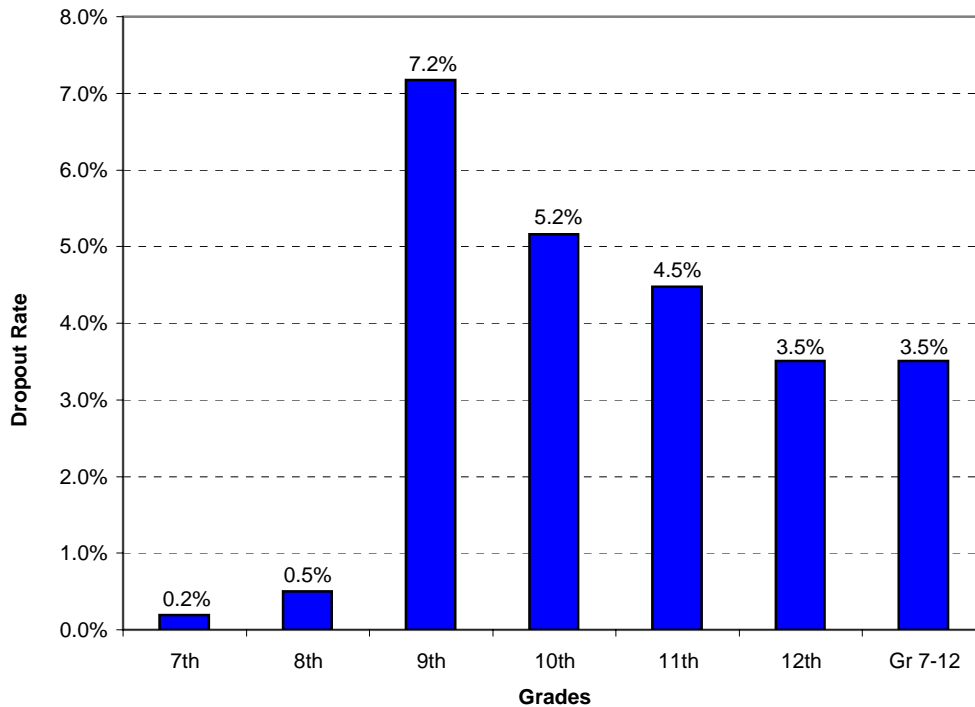


Table 8
Delaware Dropouts and Student Enrollments, 2004-2005
County by Race (Grades 9-12)

County	<u>Number of Enrolled Students</u>				<u>Number of Dropouts</u>			
	Black	Hispanic	White/Other	All	Black	Hispanic	White/Other	All
Kent	2,087	289	5,271	7,647	132	25	249	406
New Castle	7,019	1,513	12,511	21,043	460	162	444	1,066
Sussex	1,533	325	4,938	6,796	113	34	264	411
Total	10,639	2,127	22,720	35,486	705	221	957	1,883

Table 9
Dropout Rate and Percent of All Dropouts, 2004-2005
County by Race (Grades 9-12)

County	<u>Annual Dropout rate</u>				<u>Percent of All Dropouts</u>			
	Black	Hispanic	White/Other	All	Black	Hispanic	White/Other	All
Kent	6.3%	8.7%	4.7%	5.3%	7.0%	1.3%	13.2%	21.6%
New Castle	6.6%	10.7%	3.5%	5.1%	24.4%	8.6%	23.6%	56.6%
Sussex	7.4%	10.5%	5.3%	6.0%	6.0%	1.8%	14.0%	21.8%
Total	6.6%	10.4%	4.2%	5.3%	37.4%	11.7%	50.8%	100.0%

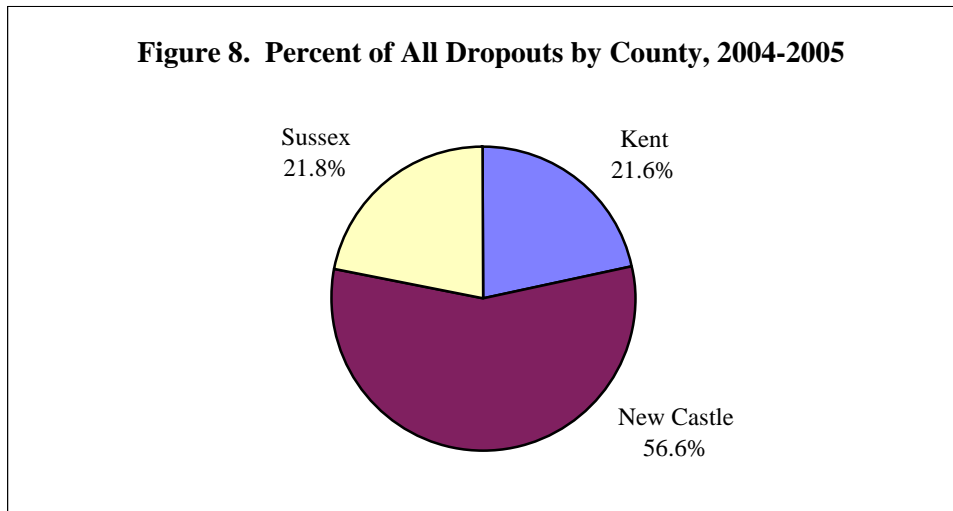


Table 10
Delaware Dropouts and Student Enrollments, 2004-2005
County by Grade

County	Number of Enrolled Students					Number of Dropouts				
	9	10	11	12	All*	9	10	11	12	All
Kent	2422	1864	1778	1584	7,648	195	98	70	43	406
New Castle	6655	5566	4465	4367	21,053	461	278	186	141	1,066
Sussex	2175	1653	1529	1439	6,796	151	93	92	75	411
Total	11,252	9,083	7,772	7,390	35,497	807	469	348	259	1,883

* Student Enrollment by county includes 11 students of unknown race.

Table 11
Dropout Rate and Percent of All Dropouts, 2004-2005
County by Grade

County	Annual Dropout rate					Percent of All Dropouts				
	9	10	11	12	All	9	10	11	12	All
Kent	8.1%	5.3%	3.9%	2.7%	5.3%	10.4%	5.2%	3.7%	2.3%	21.6%
New Castle	6.9%	5.0%	4.2%	3.2%	5.1%	24.5%	14.8%	9.9%	7.5%	56.6%
Sussex	6.9%	5.6%	6.0%	5.2%	6.0%	8.0%	4.9%	4.9%	4.0%	21.8%
Total	7.2%	5.2%	4.5%	3.5%	5.3%	42.9%	24.9%	18.5%	13.8%	100%

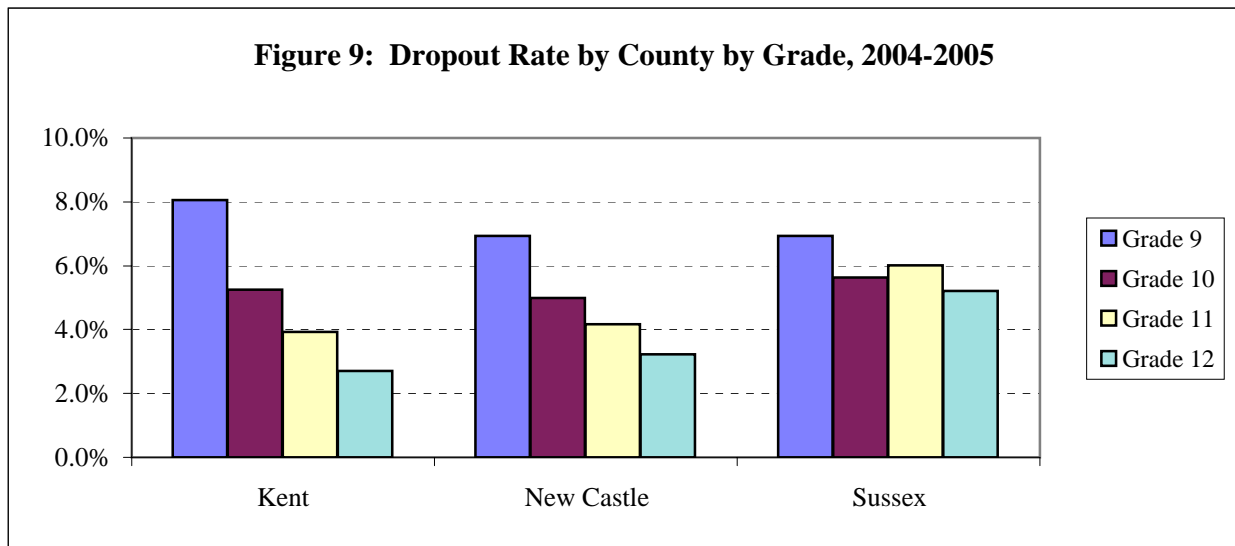


Table 12
ANNUAL DROPOUT RATES BY DISTRICT, 2002-2003 to 2004-2005
Grades 9-12

CODE	DISTRICT	2002-2003			2003-2004			2004-2005		
		TOTAL ENROLLMENT	TOTAL DROPOUTS	DROPOUT RATE	TOTAL ENROLLMENT	TOTAL DROPOUTS	DROPOUT RATE	TOTAL ENROLLMENT	TOTAL DROPOUTS	DROPOUT RATE
New Castle County		19,987	1,178	5.9	20,456	1,253	6.1	21,053	1,066	5.1
29	Appoquinimink	1,533	20	1.3	1,706	49	2.9	1,805	46	2.5
31	Brandywine	3,309	121	3.7	3,341	156	4.7	3,358	109	3.2
70	Charter School of Wilmington	937	21	2.2	918	24	2.6	936	1	0.1
33	Christina	4,919	443	9.0	4,834	423	8.8	4,945	379	7.7
34	Colonial	2,304	185	8.0	2,293	166	7.2	2,437	214	8.8
79	Delaware Military Academy				305	9	3.0	414	10	2.4
38	NCC Voc Tech	3,126	61	2.0	3,248	60	1.8	3,354	74	2.2
32	Red Clay	3,859	327	8.5	3,811	366	9.6	3,804	233	6.1
Kent County		7,446	322	4.3	7,581	435	5.7	7,648	406	5.3
10	Caesar Rodney	1,794	31	1.7	1,818	99	5.4	1,873	98	5.2
74	Campus Community	119	3	2.5	162	8	4.9	196	15	7.7
13	Capital	1,568	107	6.8	1,607	151	9.4	1,523	112	7.4
15	Lake Forest	863	65	7.5	840	39	4.6	841	42	5.0
18	Milford	1,028	62	6.0	1,023	63	6.2	998	55	5.5
39	Polytech	1,127	15	1.3	1,137	10	0.9	1,149	4	0.3
71	Positive Outcomes	53	3	5.7	82	13	15.9	78	9	11.5
24	Smyrna	894	36	4.0	912	52	5.7	990	71	7.2
Sussex County		6,779	344	5.1	6,748	415	6.1	6,796	411	6.0
17	Cape Henlopen	1,197	82	6.9	1,191	93	7.8	1,206	57	4.7
37	Delmar	550	40	7.3	556	36	6.5	534	19	3.6
36	Indian River	1,932	68	3.5	1,888	133	7.0	1,953	142	7.3
16	Laurel	472	22	4.7	496	36	7.3	498	59	11.8
23	Seaford	989	84	8.5	927	58	6.3	884	72	8.1
40	Sussex Voc Tech	1,181	20	1.7	1,194	10	0.8	1,212	18	1.5
35	Woodbridge	458	28	6.1	496	49	9.9	509	44	8.6
STATE		34,212	1,844	5.4	34,785	2,103	6.0	35,497	1,883	5.3

Note: Special Schools and ILC's are included in district dropout summary statistics.
2004-05 Student Enrollment by county includes 11 students of unknown race.

Table 13. GRADE 9-12 ANNUAL DROPOUT RATES BY SCHOOL, 2002-2003 THRU 2004-2005

CODE	HIGH SCHOOLS	2002-2003			2003-2004			2004-2005		
		TOTAL ENROLLMENT	TOTAL DROPOUTS	DROPOUT RATE	TOTAL ENROLLMENT	TOTAL DROPOUTS	DROPOUT RATE	TOTAL ENROLLMENT	TOTAL DROPOUTS	DROPOUT RATE
New Castle County		19,682	1,087	5.5	20,150	1,192	5.9	20,763	984	4.7
18	Middletown HS	1,533	20	1.3	1,706	49	2.9	1,805	46	2.5
26	HowardTech HS	692	9	1.3	754	19	2.5	772	10	1.3
66	Paul M. Hodgson	945	2	0.2	1,077	7	0.6	1,105	11	1.0
80	Delcastle Tech HS	1,489	10	0.7	1,417	24	1.7	1,477	12	0.8
190	Brandywine HS	1,183	39	3.3	1,272	61	4.8	1,272	26	2.0
194	Concord HS	1,125	42	3.7	1,126	42	3.7	1,136	45	4.0
196	Mt Pleasant HS	953	40	4.2	942	52	5.5	949	38	4.0
286	Calloway Arts Sch	349	9	2.6	364	3	0.8	373	2	0.5
290	John Dickinson HS	1,038	115	11.1	991	134	13.5	1,007	80	7.9
292	A. I. duPont HS	1,183	96	8.1	1,215	85	7.0	1,270	62	4.9
294	Thomas McKean HS	1,217	82	6.7	1,149	126	11.0	1,053	67	6.4
295	Charter Sch of Wilm	937	21	2.2	918	24	2.6	936	1	0.1
390	Christiana HS	1,404	120	8.5	1,332	135	10.1	1,452	90	6.2
392	Glasgow HS	1,437	129	9.0	1,409	141	10.0	1,510	161	10.7
394	Newark HS	1,908	178	9.3	1,894	125	6.6	1,815	121	6.7
490	William Penn HS	2,240	174	7.8	2,232	155	6.9	2,369	201	8.5
540	Margaret S. Sterck	49	1	2.0	47	1	2.1	48	1	2.1
578	Delaware Mil. Acad.				305	9	3.0	414	10	2.4
Kent County		7,321	308	4.2	7,452	418	5.6	7,507	393	5.2
570	Positive Outcomes	53	3	5.7	82	13	15.9	78	9	11.5
573	Campus Community	119	2	1.7	162	8	4.9	196	15	7.7
626	Caesar Rodney HS	1,719	29	1.7	1,738	94	5.4	1,785	98	5.5
648	Dover HS	1,518	96	6.3	1,558	139	8.9	1,470	99	6.7
652	POLYTECH HS	1,127	15	1.3	1,137	10	0.9	1,149	4	0.3
665	Lake Forest HS	863	65	7.5	840	39	4.6	841	42	5.0
678	Milford SR HS	1,028	62	6.0	1,023	63	6.2	998	55	5.5
688	Smyrna HS	894	36	4.0	912	52	5.7	990	71	7.2
Sussex County		6,624	341	5.1	6,614	395	6.0	6,666	396	5.9
726	Cape Henlopen HS	1,161	82	7.1	1,155	90	7.8	1,172	52	4.4
730	Delmar Sr HS	550	40	7.3	556	36	6.5	534	19	3.6
746	Indian River HS	734	32	4.4	730	39	5.3	758	62	8.2
748	Sussex Central Sr HS	1,112	34	3.1	1,075	81	7.5	1,108	72	6.5
756	Laurel Sr HS	460	21	4.6	481	32	6.7	489	57	11.7
766	Seaford SR HS	968	84	8.7	927	58	6.3	884	72	8.1
770	Sussex Tech HS	1,181	20	1.7	1,194	10	0.8	1,212	18	1.5
780	Woodbridge HS	458	28	6.1	496	49	9.9	509	44	8.6

Note: Special Schools and ILC's are not included in this table. All schools include grades 9 thru 12.

Figure 10. Dropout Rate by District, 2004-2005

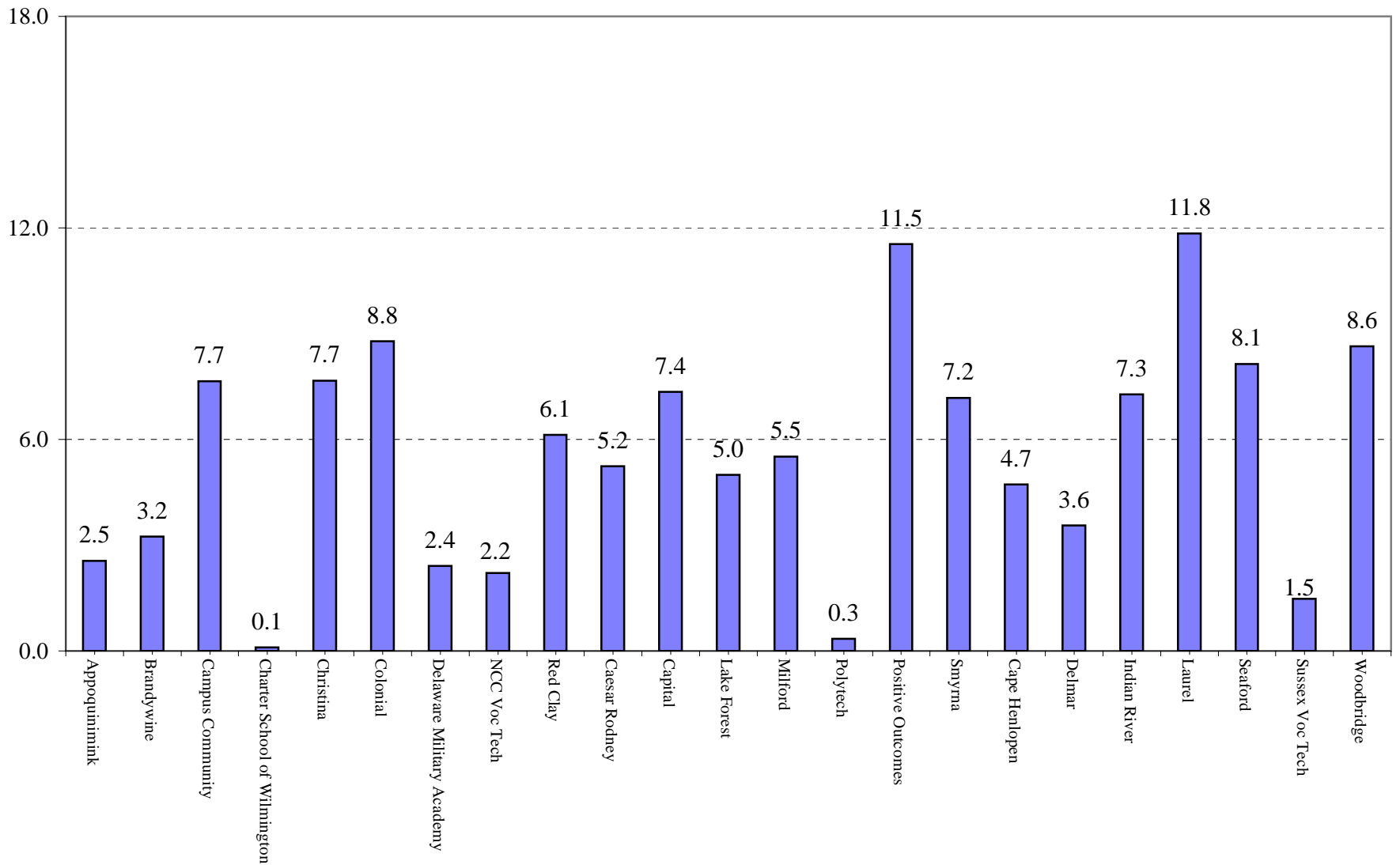


Table 14
Delaware Dropouts and Student Enrollments, 2004-2005
County by Special-Ed (Grades 9-12)

County	<u>Number of Enrolled Students</u>			<u>Number of Dropouts</u>		
	Special-Ed	Regular-Ed	All*	Special-Ed	Regular-Ed	All
Kent	1,237	6,411	7,648	62	344	406
New Castle	2,694	18,359	21,053	143	923	1066
Sussex	1,004	5,792	6,796	40	371	411
Total	4,935	30,562	35,497	245	1,638	1,883

* Student Enrollment by county includes 11 students of unknown race.

Table 15
Dropout Rate and Percent of All Dropouts, 2004-2005
County by Special-Ed (Grades 9-12)

County	<u>Annual Dropout rate</u>			<u>Percent of All Dropouts</u>		
	Special-Ed	Regular-Ed	All	Special-Ed	Regular-Ed	All
New Castle	5.0%	5.4%	5.3%	3.3%	18.3%	21.6%
Kent	5.3%	5.0%	5.1%	7.6%	49.0%	56.6%
Sussex	4.0%	6.4%	6.0%	2.1%	19.7%	21.8%
Total	5.0%	5.4%	5.3%	13.0%	87.0%	100.0%

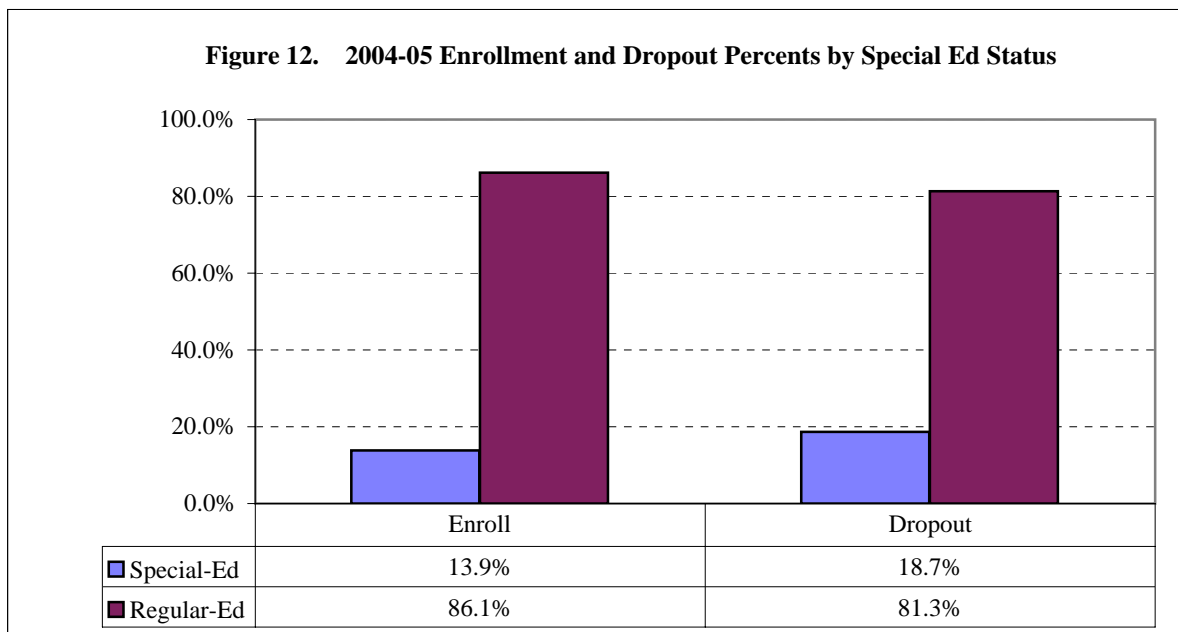


Table 16
Delaware Dropouts and Student Enrollments, 2004-2005
Race by Special-Ed (Grades 9-12)

Group	<u>Number of Enrolled Students</u>				<u>Number of Dropouts</u>			
	Black	Hispanic	White/Other	All	Black	Hispanic	White/Other	All
Special-ED	2,131	271	2,532	4,934	105	19	121	245
Regular-ED	8,508	1,856	20,188	30,552	600	202	836	1638
Total	10,639	2,127	22,720	35,486	705	221	957	1883

Table 17
Dropout Rate and Percent of All Dropouts, 2004-2005
Race by Special-Ed (Grades 9-12)

Group	<u>Annual Dropout Rate</u>				<u>Percent of All Dropouts</u>			
	Black	Hispanic	White/Other	All	Black	Hispanic	White/Other	All
Special-ED	4.9%	7.0%	4.8%	5.0%	5.6%	1.0%	6.4%	13.0%
Regular-ED	7.1%	10.9%	4.1%	5.4%	31.9%	10.7%	44.4%	87.0%
Total	6.6%	10.4%	4.2%	5.3%	37.4%	11.7%	50.8%	100.0%

Table 18
Delaware Special Education Enrollments and Dropouts by Race
2002-2005

Year		Black	Hispanic	White/Other	All
2002	Enrolled	1,831	218	2,277	4,326
	Dropouts	128	13	83	224
	Annual Dropout Rate	7.0%	6.0%	3.6%	5.2%
	Percent of All Dropouts	6.0%	0.6%	3.9%	10.6%
2003	Enrolled	1,839	212	2,280	4,331
	Dropouts	161	19	134	314
	Annual Dropout Rate	8.8%	9.0%	5.9%	7.3%
	Percent of All Dropouts	8.7%	1.0%	7.2%	16.9%
2004	Enrolled	1,951	240	2,412	4,603
	Dropouts	163	34	197	394
	Annual Dropout Rate	8.4%	14.2%	8.2%	8.6%
	Percent of All Dropouts	7.8%	1.6%	9.4%	18.7%
2005	Enrolled	2,131	271	2,532	4,934
	Dropouts	105	19	121	245
	Annual Dropout Rate	4.9%	7.0%	4.8%	5.0%
	Percent of All Dropouts	5.6%	1.0%	6.4%	13.0%

Table 19
Annual Delaware Dropout Rates
1979-80 Through 2004-2005

Year	White/Other	Black	Hispanic	State
1979-80	7.0	12.1	14.6	7.9
1980-81	6.9	10.7	13.7	7.8
1981-82	8.1	10.8	22.0	8.1
1982- 83	6.2	9.2	15.5	6.9
1983-84	6.2	9.2	17.2	7.2
1984-85	7.3	8.7	12.3	7.6
1985-86	7.1	8.9	11.5	7.6
1986-87	6.2	9.5	14.1	7.2
1987-88	6.0	10.0	13.6	7.2
1988-89	6.1	10.2	14.2	7.3
1989-90	5.3	10.0	11.9	6.6
1990-91	4.8	7.9	8.8	5.7
1991-92	3	6.2	7.9	4.0
1992-93	3.5	5.8	5.1	4.2
1993-94	3.7	6.8	6.7	4.6
1994-95	4	5.8	7.5	4.6
1995-96	3.9	5.3	8.3	4.5
1996-97	3.7	6.1	7.3	4.5
1997-98	3.8	6.4	8.2	4.7
1998-99	3.4	5.2	6.9	4.1
1999-00	3.4	5.6	7.2	4.2
2000-01	3.5	5.3	7.4	4.2
2001-02	4.5	8.9	11.5	6.2
2002-03	4.0	8.0	9.6	5.4
2003-04	4.9	7.4	12.1	6.0
2004-05	4.2	6.6	10.4	5.3

Table 20. Special Education Grade 9-12 Dropouts by School, 2002-2003 through 2004-2005

CODE	HIGH SCHOOLS	2002-2003		2003-2004		2004-2005		2003-2005
		SPECIAL ED	SPECIAL ED	SPECIAL ED	SPECIAL ED	SPECIAL ED	SPECIAL ED	3-Yr Average
		ENROLLMENT	DROPOUTS	ENROLLMENT	DROPOUTS	ENROLLMENT	DROPOUTS	Dropout Rate*
Delaware Public Schools		4,326	315	4,905	398	4,859	245	6.8%
New Castle County		2,343	181	2,625	212	2,618	143	7.1%
18	Middletown HS	191	7	224	5	207	9	3.4%
26	HowardTech HS	98	3	104	2	106	1	1.9%
66	Paul M. Hodgson	100	2	102	1	113	0	1.0%
80	Delcastle Tech HS	180	0	205	3	219	1	0.7%
190	Brandywine HS	140	7	176	6	167	2	3.1%
194	Concord HS	119	12	142	5	138	3	5.0%
196	Mt Pleasant HS	131	12	139	11	137	4	6.6%
286	Calloway Arts Sch	18	1	20	0	19	0	1.8%
290	John Dickinson HS	161	10	175	21	173	8	7.7%
292	A. I. duPont HS	74	9	79	11	94	6	10.5%
294	Thomas McKean HS	131	12	129	26	130	8	11.8%
295	Charter Sch of Wilm	3	0	2	0	0	0	
390	Christiana HS	147	13	157	19	185	6	7.8%
392	Glasgow HS	189	15	171	25	167	26	12.5%
394	Newark HS	205	14	237	19	227	15	7.2%
490	William Penn HS	287	28	324	27	305	35	9.8%
514	John G. Leach School			24	1	28	0	
518	Brandywine ILC			1	1	1	0	
522	Commodore MacDonough	38	11	37	8	40	10	25.2%
527	PACE/TRLIC	49	16	74	10	77	6	16.0%
530	First State School	6	0	3	1	5	1	
537	Douglass Alternative School	27	9	30	10	13	0	27.1%
540	Margaret S. Sterck	49	0	47	0	47	1	0.7%
578	Delaware Mil. Acad.			23	0	20	1	
Kent County		1,162	65	1,296	106	1,237	62	6.3%
570	Positive Outcomes	28	1	38	1	42	3	4.6%
573	Campus Community	13	0	13	0	18	0	
626	Caesar Rodney HS	182	3	261	19	233	8	4.4%
630	John S. Charlton School	75	2	80	5	88	0	2.9%
648	Dover HS	203	16	248	28	244	13	8.2%
652	Polytech HS	122	3	127	3	103	1	2.0%
655	Kent Secondary ILC	45	10	49	10	53	7	18.4%
665	Lake Forest HS	130	11	128	7	125	1	5.0%
678	Milford SR HS	180	12	164	20	167	15	9.2%
688	Smyrna HS	184	7	188	13	164	14	6.3%
Sussex County		821	69	984	80	1,004	40	6.7%
689	Allen (Richard) School	18	2	21	9	24	6	27.0%
726	Cape Henlopen HS	162	14	150	22	145	2	8.3%
728	Sussex Consortium			36	2	34	0	
730	Delmar Sr HS	61	7	60	5	70	0	6.3%
746	Indian River HS	88	9	96	10	98	5	8.5%
748	Sussex Central Sr HS	120	8	165	7	175	8	5.0%
750	Ennis (Howard T) School			62	3	63	1	
756	Laurel Sr HS	63	5	68	3	76	6	6.8%
765	Western Sussex Academy	10	1	15	3	9	1	
766	Seaford SR HS	95	14	110	5	113	4	7.2%
770	Sussex Tech HS	135	5	143	4	145	2	2.6%
780	Woodbridge HS	69	4	58	7	52	5	8.9%

* Dropout Rates are calculated for schools with 3 years of data, and three-year SPED enrollment of at least 50 students.

DEPARTMENT OF EDUCATION

Annual Dropout Summary

Prepared by

Regina Greenwald and Melvin D'Souza

**Special thanks to all of the data providers in Delaware's schools and
The Dropout Prevention Committee
With the support of The Department of Education's Technology Management and
Design workgroup, Patrick Dunn, Director**