

**Delaware
Department
of Education**

Child and Adult Care Food Program (CACFP) Newsletter

Volume 1, Issue 1

1st Quarter, 2005

INSIDE THIS ISSUE:

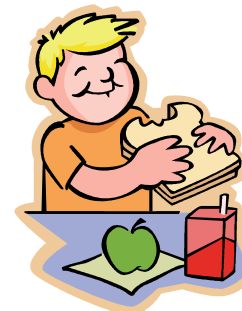
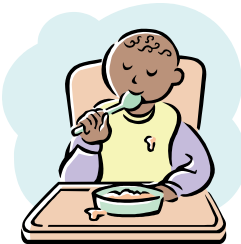
Welcome!	1
Welcome To Our New Sponsors	1
Quick Tip!	1
Upcoming New Sponsor Trainings	1
Important Reminders	1
Surviving Your Administrative Review	2
Recipe Corner	2



Quick Tip!

Create banana pops.

Give each child half of a banana and a popsicle stick. Let the child peel the banana, insert the stick, then roll the banana in granola cereal. Place the "banana pop" in a Styrofoam holder, and place in the freezer for a few hours.



Welcome!

Welcome to the first issue of our quarterly newsletter. Each issue will provide up-to-date information on our program. Some of the topics we will cover include:

- How to have a successful Administrative Review
- Recipes
- Regulation Changes
- Upcoming Trainings
- Nutrition Tips
- Budget Tips
- Special Announcements/Reminders

Welcome To Our New Sponsors:



Little Scholars Learning Center
2511 W. 4th Street
Suite A-E
Wilmington, DE 19805



Harvest Child & Youth Development Center
2205 W. Lancaster Avenue
Wilmington, DE 19805



Heavenly Angels
1833 Lancaster Avenue
Wilmington, DE 19805

CACFP Staff:

Beth M. Wetherbee
Education Specialist

Lynn A. Dickey
Field Agent

JoAnne M. Holder
Field Agent

Sarah A. Greene
Secretary

Upcoming New Sponsor Trainings:

Dates: September 8, 2005
October 13, 2005
November 10, 2005
December 8, 2005

Location: Department of Education, Dover

Important Reminders:

Effective **October 1, 2005**, no cheesefood/cheese product, or cereals over 6 grams of sugar will be allowed.



Delaware Department of Education
Child and Adult Care Food Program
401 Federal Street, Suite #2
Dover, DE 19901

Phone: 302-739-4718
Fax: 302-739-6397



Office Hours: 8-4:30
Monday-Friday

We're on the web!

<http://childnutrition.doe.state.de.us/>

Surviving Your Administrative Review

Every issue for eight issues, we will be sharing a reason why child care sponsors fail their reviews. (The information is taken from the *CNResource's 8 Reasons Child Care Providers Fail Their CACFP Reviews*.)

I. Staff Turnover:

The number one reason Child Care [Sponsors] fail their CACFP reviews is because the individual who has been trained to operate the CACFP recently quit and now the [sponsor] has to start over. Who will complete the paperwork, write the menus, attend training, compile the claim data, etc.?

Do you have a new individual handling CACFP issues? Why not call and sign them up for New Sponsor Training (see dates on front)?

Important Notice:

Your disregard (overclaim) limit will be raised to \$600 (from our current \$100) effective for reviews conducted after October 1, 2005.

Recipe Corner

Funny-Face Pizzas

Serves 4
Total: 15 minutes or more

Ingredients:

1/2 cup bottled or canned tomato or pizza sauce
2 sandwich-size English muffins, split and toasted
Sliced cheese (see Note)

Faces and hair: shredded cheese, assorted vegetables, sliced small black olives and finely shredded lettuce

Directions:

1. Heat oven to 400°F. Have ready a baking sheet and 3- to 3 1/2 inch heart-shape, round and/or scallop-edge cookie cutter(s).
2. Spread sauce on muffins. Place on pan. Use cookie cutters to cut rounds from cheese slices. Place on sauce.
3. **Faces:** Use your imagination or decorate pizzas as shown in photo.
4. Bake 5 to 10 minutes until cheese melts and pizzas are hot.

Note: Packaged individually wrapped cheese slices are the perfect size to cut in rounds for the tops of muffins.

Submit your own favorite recipes for publication in our newsletter. Send them in by fax, snail mail, or email.

Email address: sgreene@doe.k12.de.us

