

Name: _____

Date: _____

“Human Body” Summative Assessment

1. Name the kind of joint found in the shoulder.

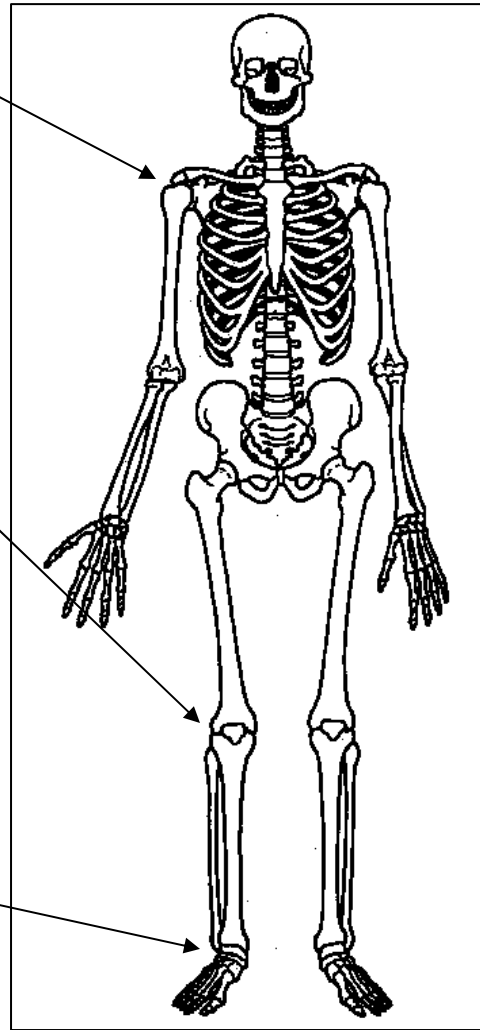
Describe how this joint lets your body move.

2. Name the kind of joint found in the knee.

Describe how this joint lets your body move.

3. Name the kind of joint found in the ankle.

Describe how this joint lets your body move.



<http://members.aol.com/Attic21/Anatomy/Anat>

4. List **three** functions of your skeleton.

5. Describe **two** ways your bones change throughout your lifetime.

6. Name **two** functions of your thumbs.

Here is a picture of an artificial joint.



www.stepinsidedesign.com

7a. Sometimes people need joints replaced. Where would this artificial joint be located on the skeleton?

7b. What kind of movement does this artificial joint allow?

8. Bones do not move by themselves. Describe how your arm moves at the elbow.

9. Imagine catching a ball tossed to you by a friend. The **brain, muscles, and bones** work together. Describe how these parts of the human body work together **with your senses** to help you catch the ball.
