

Delaware Student Testing Program

RESULTS OF THE SCIENCE AND SOCIAL
STUDIES ASSESSMENTS
SPRING 2006 ADMINISTRATION
GRADES 8 and 11

Prepared by the Assessment and Analysis Group
Assessment and Accountability Branch
Delaware Department of Education

October 2006

OFFICERS OF THE DELAWARE DEPARTMENT OF EDUCATION

Valerie A. Woodruff

Secretary of Education

Nancy J. Wilson, Ph.D.

Deputy Secretary of Education

Susan Keene Haberstroh

Executive Assistant

Robin R. Taylor, M.Ed.

Associate Secretary, Assessment and Accountability Branch

Lewis Atkinson, III, Ed.D.

Associate Secretary, Adult Education and Workforce Development

Martha Brooks, Ed.D

Associate Secretary, Curriculum and Instructional Improvement Branch

Dorcell Spence

Associate Secretary, Finance and Administrative Services

Wendy B. Roberts, Ph.D.

Director, Assessment and Analysis Work Group

Darlene J. Bolig, Ed.D.

Helen C. Dennis, M.A.

Jeffery Fleming, M.S.

Katia Foret, Ph.D.

James F. Hertzog, M.Ed.

Patsy G. Kersteter, Ph.D.

Joann F. Prewitt, M.A.

Liru Zhang, Ph.D.

Support Staff:

Gail R. Truxon

Elaner M. Brown

Pearl Carrington

Theresa L. Kreer

Melinda L. Rash

Kimberly K. Rodriguez

The Delaware Department of Education is an equal opportunity employer. It does not discriminate on the basis of race, color, national origin, sex, sexual orientation, marital status, disability, age or Vietnam Era veteran's status in employment, or its programs and activities. Inquiries regarding non-discrimination policies should be directed to: Director of Human Resources and Quality Management, Delaware Department of Education, 401 Federal Street, Suite 2, Dover, DE 19901 or telephone 302-739-4025. For more information about the DSTP, write to the Department of Education, Assessment and Accountability Branch, 401 Federal Street, Suite 2, Dover, DE 19901, or telephone (302) 735-4090.

Document Control No. 95-01/06/09/03

This report is available on the World Wide Web at <http://www.doe.state.de.us/aab>.

Executive Summary of 2006 Results

DSTP and DAPA Science & Social Studies, Grades 8 and 11

This document summarizes the results of the 2006 Delaware Student Testing Program (DSTP) in Science and Social Studies, and the 2006 Delaware Alternate Portfolio Assessment (DAPA) in Science and Social Studies. The DSTP is a series of standardized assessments. The DAPA is a portfolio that assesses students with disabilities meeting the criteria in the *Guidelines for Inclusion of Students with Disabilities and English Language Learners*. Science and Social Studies data for grades 4 and 6 are published in a separate document.

These results are part of a long-term effort to gather data on our students' educational progress and to use the data to inform our decisions about instruction. Studied over time, the data will help identify trends and patterns that can be directly related to curriculum and instruction, giving districts and schools additional decision-making tools. The data include summaries of test scores and participation.

DSTP Results

DSTP results are summarized at three levels: the state level, the district level and the school level. This executive summary contains the state level results. The two accompanying summaries are the district level results and the school level results. If a district or a school has fewer than 15 students in a given category (the Standards-Based Score N is less than 15), the number of students is reported, but the summary statistics associated with those students are not. Students are included in the Standards-Based Score N if their score is considered to be aggregable¹.

¹ See the *Delaware Student Testing Program Guidelines for Inclusion of Students with Disabilities and Students With Limited English Proficiency* or page 7 of this document for a definition of aggregable and non-aggregable scores.

The Science and Social Studies data are reported as Standards-Based Scores (SBSs) and Performance Levels (PLs). PLs tell how students are performing relative to the state’s content standards. Delaware’s five performance levels are listed below. The SBSs also measure students’ progress toward Delaware standards. They are reported on a scale that runs from approximately 100 to 500.

DAPA Results

DAPA results are summarized at two levels: the state level and the district level. This executive summary contains the state level results. The accompanying summaries contain the district level results. If a district has fewer than 15 students in a given category, the number of students is reported, but the summary statistics associated with those students are not. DAPA scores are reported in Performance Levels.

Socio-Economic Status

In the tables that report district and school level DSTP results, the right-most column contains the percent of students in the school that are eligible for free and reduced priced lunch (FRPL), which is often used in educational research as an indicator of socio-economic status.

DSTP and DAPA Performance Levels

Students who took the DSTP receive a performance level in science and social studies. Each DSTP performance level is based on the student’s Standards-Based Score. Students who completed a DAPA portfolio receive a performance level in science and social studies.

Table 1 – DSTP and DAPA Student Performance Levels		
Level	Category	Description
5	Distinguished	Excellent performance
4	Exceeds the Standard	Very good performance
3	Meets the Standard	Good performance
2	Below the Standard	Needs improvement
1	Well Below the Standard	Needs significant improvement

Cut Scores for the DSTP and DAPA Assessments

The cut scores for DSTP Science appear in Table 2. The indicated numbers represent the lowest possible scores a student can earn and still be within the indicated performance level.

Table 2 – DSTP Science Cut Scores				
Grade	Below	Meets	Exceeds	Distinguished
8	280	300	325	338
11	282	300	325	335

Table 3 contains similar information for Social Studies. The indicated numbers represent the lowest possible scores a student can earn and still be within the indicated performance level.

Table 3 – DSTP Social Studies Cut Scores				
Grade	Below	Meets	Exceeds	Distinguished
8	282	300	325	335
11	276	300	325	337

Table 4 contains the scores a student can earn on the DAPA portfolio and the corresponding performance level.

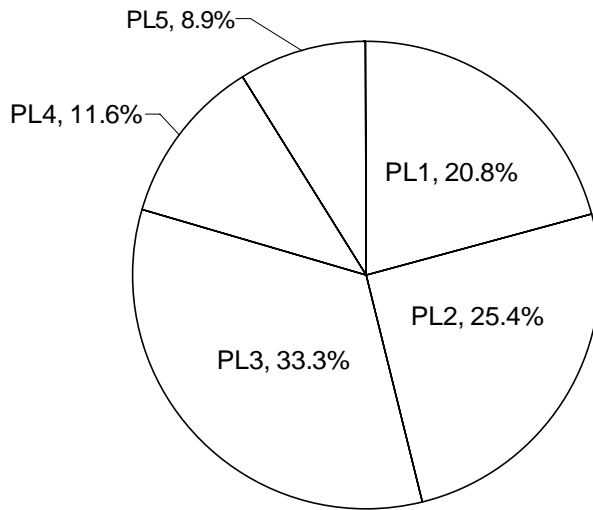
Table 4 – DAPA Proficiency Levels		
Level	Performance Level	Score Range
5	Distinguished (excellent performance)	19, 20
4	Exceeds the standard (very good performance)	17, 18
3	Meets the standard (good performance)	15,16
2	Below the standard (needs improvement)	11-14
1	Well below the standard (needs significant improvement)	4-10

2006 Science Results, Grades 8 and 11

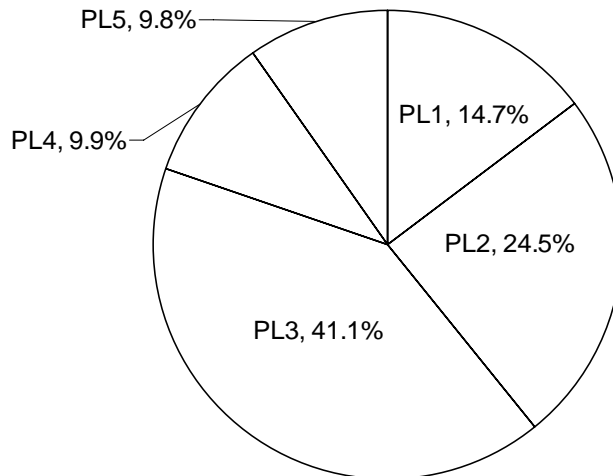
Chart 1, Student Performance Levels, DSTP Science

(Percentages may not sum to exactly 100 because of rounding.)

Grade 8 Science Performance Levels



Grade 11 Science Performance Levels



PL1: Well Below the Standard	PL2: Below the Standard	PL3: Meets the Standard
PL4: Exceeds the Standard	PL5: Distinguished	

Chart 2, Standards-Based Scores, DSTP Science

Mean Standards-Based Scores, DSTP Science

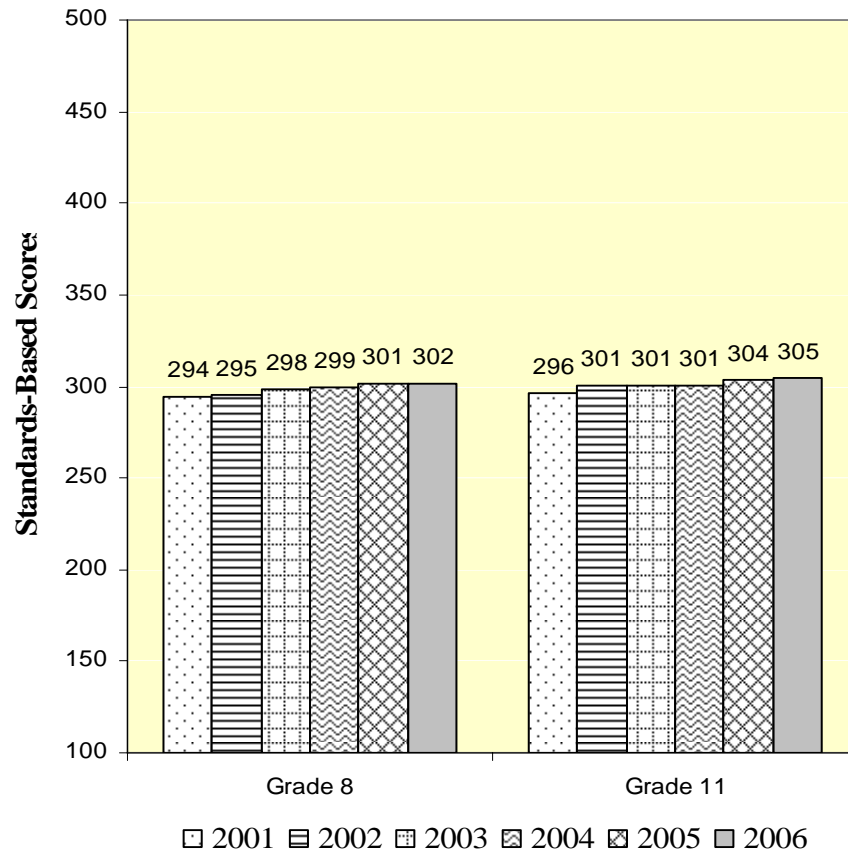
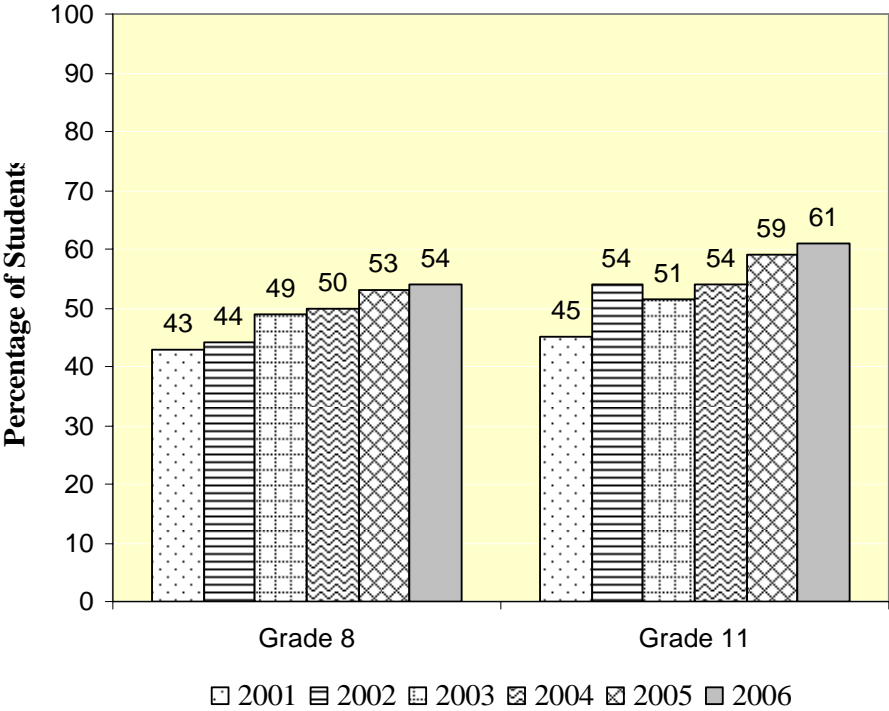


Chart 3, Students Meeting/Exceeding the Standard, DSTP Science

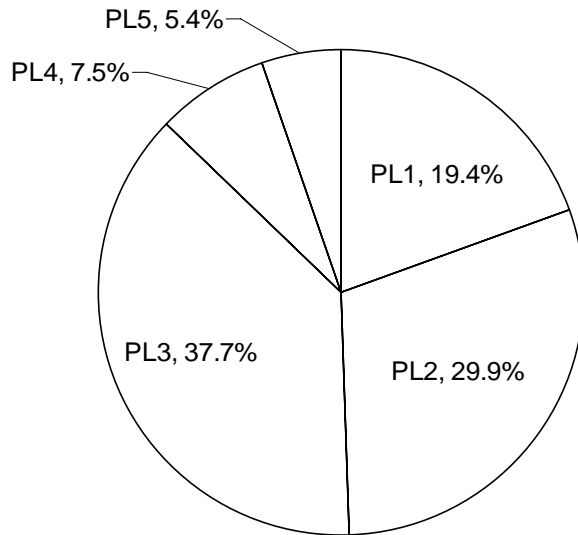
Percentage of Students Meeting/Exceeding Delaware's Science Standards



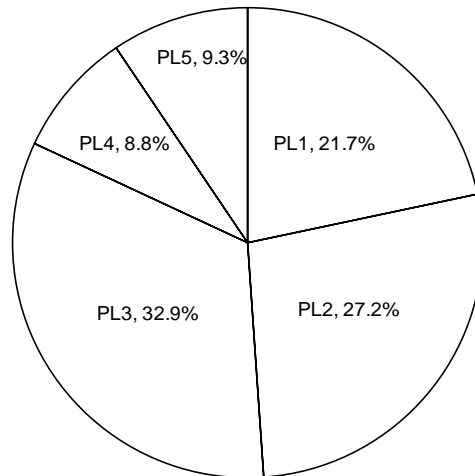
2006 Social Studies, Results, Grades 8 and 11

Chart 4, Student Performance Levels, DSTP Social Studies
(Percentages may not sum to exactly 100 because of rounding.)

Grade 8 Social Studies Performance Levels



Grade 11 Social Studies Performance Levels



PL1: Well Below the Standard	PL2: Below the Standard	PL3: Meets the Standard
PL4: Exceeds the Standard	PL5: Distinguished	

Chart 5, Standards-Based Scores, DSTP Social Studies

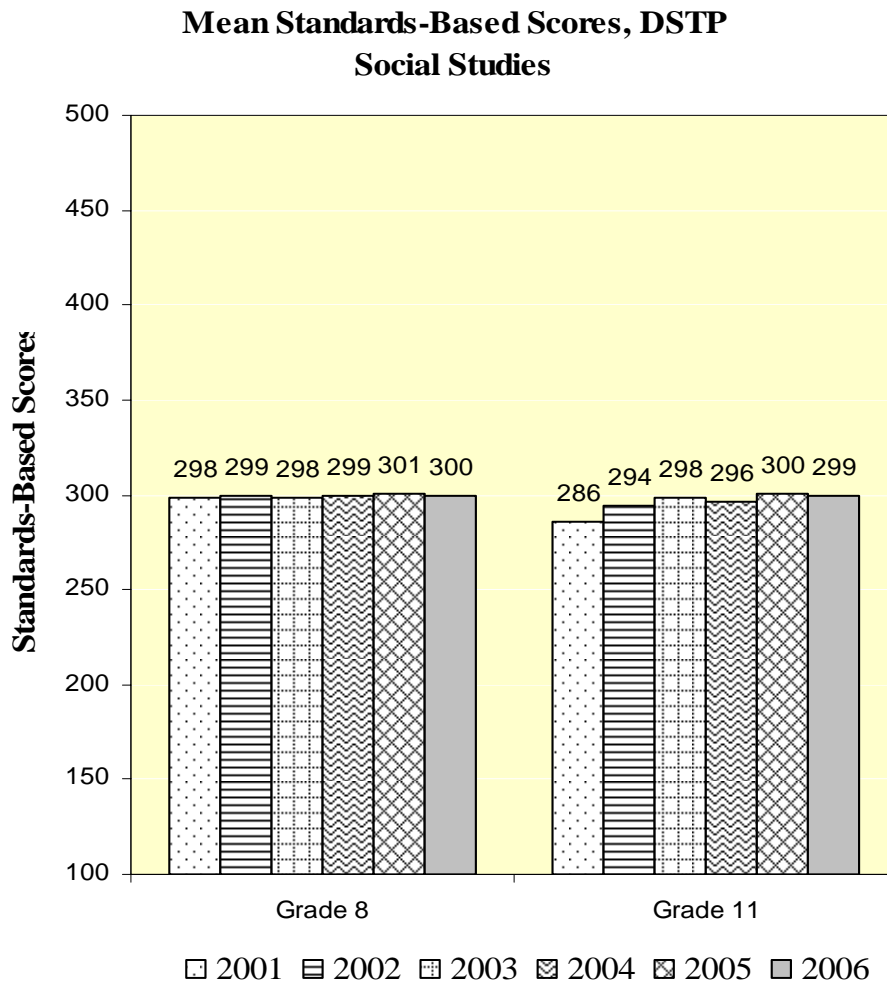
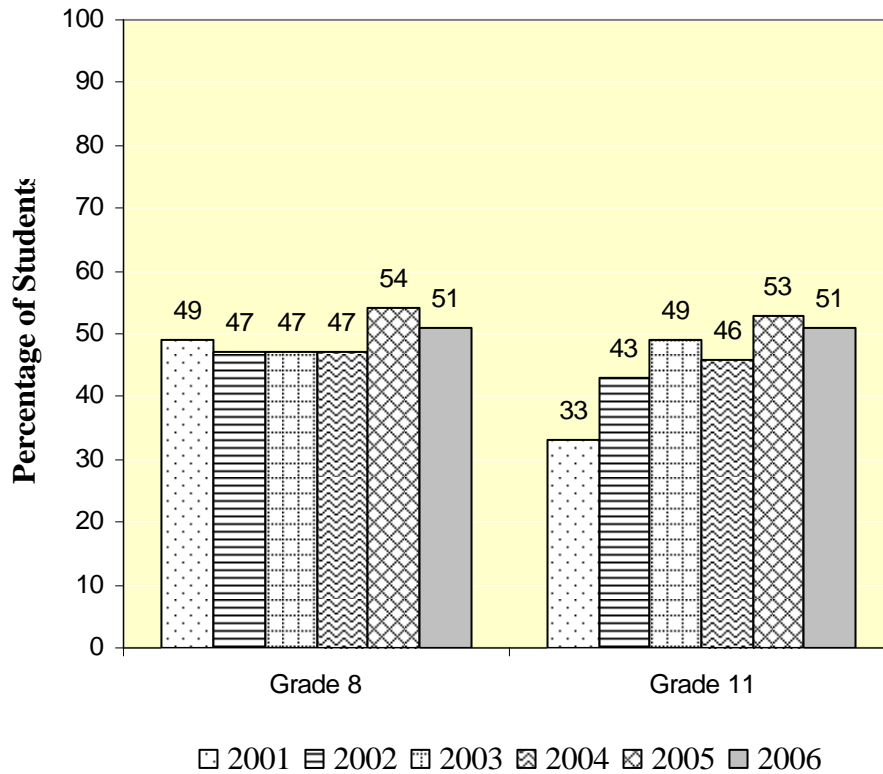


Chart 6, Students Meeting/Exceeding the Standard, DSTP Social Studies

Percentage of Students Meeting/Exceeding Delaware's Social Studies Standards



Summary of DAPA Scores

Table 5 Science—DAPA Scores

Grade	N	Performance Levels				
		Well Below	Below	Meets	Exceeds	Distinguished
8	117	.09	.08	.27	.24	.32
11	114	.02	.04	.15	.35	.44

Table 6 Social Studies—DAPA Scores

Grade	N	Performance Levels				
		Well Below	Below	Meets	Exceeds	Distinguished
8	120	.18	.06	.28	.16	.33
11	114	.04	.06	.15	.25	.50

Summary of Non-Aggregable Scores

Aggregable and non-aggregable scores are defined in the *Delaware Student Testing Program Guidelines for the Inclusion of Students with Disabilities and Students with Limited English Proficiency*:

“A **non-aggregable** score results when an accommodation changes the test construct (what the test is measuring) or modifies the test in such a way that the score can no longer be directly compared to scores of students testing under standard conditions.” (page 12)

“An **aggregable** score results when a student takes the DSTP under standard conditions (without accommodations), or with an accommodation that does not change the test construct.” (page 12)

See the *Guidelines for Inclusion* for more information about non-aggregable and aggregable accommodations. The following three tables summarize, statewide, the scores of students with disabilities and limited English proficient students who took the DSTP with non-aggregable accommodations.

Table 7 Science—Non-Aggregable Scores

Grade	Standards-Based Scores			Performance Levels				
	N	Mean	SD	Well Below	Below	Meets	Exceeds	Distinguished
8	161	283.4	15.6	47.2	38.5	13.0	0.6	0.6
11	49	272.2	21.8	69.4	20.4	6.1	2.0	2.0

Table 8 Social Studies—Non-Aggregable Scores

Grade	Standards-Based Scores			Performance Levels				
	N	Mean	SD	Well Below	Below	Meets	Exceeds	Distinguished
8	105	283.8	19.2	49.5	25.7	23.8	0.0	1.0
11	60	247.2	93.0	53.3	28.3	16.7	1.7	0.0

Participation Rates

A goal of the DSTP and DAPA is to have as many as possible of Delaware’s public school students at each test grade participate. To achieve this goal, participation guidelines for students with disabilities and limited English proficient (LEP) students and procedures for granting special exemptions and invalidations have been established by the DOE.

DSTP

Eligible N. All students enrolled in a public school are eligible to take the DSTP unless they participate in the Delaware Alternate Portfolio Assessment (DAPA) or they were granted a Special Exemption. It is the sum of “Tested N” and “Not Tested N.”

Exempt N. Some students were granted a special exemption from the DSTP due to physical or mental conditions or reasons of an emergency nature, such as death of a family member, accident, hospitalization, etc. Special exemptions or invalidations were also granted for students who were unable to complete all or part of the test due to conditions beyond the student’s control that developed during the weeks of testing. These students are counted in the “Exempt N” column.

Tested N. “Tested N” is the number of students who took the DSTP. Invalidations may have resulted due to behavior caused by the student such as cheating, disruptive behavior, refusal to test, etc. This type of invalidation resulted in a performance level 1 for the content area(s) affected and the student is counted in the “Tested N” column.

Not Tested N. Students are counted in the “Not Tested” column if they are eligible to take the DSTP but are absent during the entire test week and the make-up week that follows.

% Tested. The percent tested is calculated by dividing “Tested N” by “Eligible N.”

% Not Tested. The percent not tested is calculated by dividing “Not Tested N” by “Eligible N.”

Table 9 – Science Participation

Grade	Eligible N	Exempt N	Tested N	Not Tested N	% Tested	% Not Tested
8	10,323	3	9,970	353	96.6	3.4
11 ²	7,310	7	6,748	562	92.3	7.7

Table 10 – Social Studies Participation

Grade	Eligible N	Exempt N	Tested N	Not Tested N	% Tested	% Not Tested
8	10,325	1	9941	384	96.3	3.7
	7,310	7	6709	601	91.8	8.2

¹¹2

² Students who are classified as 11th graders for the second consecutive school year in 2005-2006 are excluded from calculations of 11th grade participation.

DAPA

Eligible N. A student is eligible to participate in the Delaware Alternate Portfolio Assessment (DAPA) if he/she meets the requirements in the *Guidelines for Inclusion* and the student’s IEP calls for participation in the DAPA. If such a student is granted a Special Exemption, he/she is excluded from counts of eligible students. Eligible N is the sum of “Tested N” and “Not Tested N.”

Exempt N. Some students were granted a special exemption from the DAPA due to physical or mental conditions or reasons of an emergency nature, such as death of a family member, accident, hospitalization, etc. Special exemptions were also granted for students who were unable to complete all or part of the portfolio due to conditions beyond the student’s control that developed during the data collection period. These students are counted in the “Exempt N” column.

Tested N. “Tested N” is the number of students who participated in the DAPA. A portfolio may have been scored as “Incomplete” if it was missing a required component or at least one of the scoring rules was not satisfied. A score of “Incomplete” resulted in a performance level 1 for the content area(s) affected. Therefore, such a student is counted in the “Tested N” column.

Not Tested N. A student is counted in the “Not Tested” column if he is eligible to participate in the DAPA but no portfolio was submitted and the student was not granted a special exemption.

% Tested. The percent tested is calculated by dividing “Tested N” by “Eligible N.”

% Not Tested. The percent not tested is calculated by dividing “Not Tested N” by “Eligible N.”

Table 11 – DAPA Science Participation Rates*

Grade	Eligible N	Exempt N	Tested N	Not Tested N	% Tested	% Not Tested
8	141	2	117	24	83.0	17.0
11	115	2	114	1	99.1	0.9

Table 12 – DAPA Social Studies Participation Rates*

Grade	Eligible N	Exempt N	Tested N	Not Tested N	% Tested	% Not Tested
8	141	2	120	21	85.1	14.9
11	115	2	114	1	99.1	1.9

* Due to security-related irregularities in the portfolio development process, some students are counted as “not tested.”

District Results—Science, Grade 8

State/District	Grade	Standards-Based Score N	Standards Based Score Mean	Standards Based Score SD	% Well Below Standard	% Below Standard	% Meets the Standard	% Exceeds	% Distinguished	District % FRPL Eligible
State of Delaware	8	9809	302.2	27.8	20.8	25.4	33.3	11.6	8.9	-
Appoquinimink	8	577	313.37	24.4	8.7	18.5	41.9	17.9	13.0	11.9
Brandywine	8	856	304.43	29.7	19.9	23.6	31.9	12.7	11.9	35.2
Caesar Rodney	8	615	311.36	25.4	10.4	20.7	41.0	15.4	12.5	29.1
Cape Henlopen	8	328	308.12	25.5	15.2	21.0	35.4	18.6	9.8	29.5
Capital	8	488	293.42	25.0	28.9	33.2	26.4	7.4	<5.0	43.4
Christina	8	1,460	294.75	26.4	26.9	30.3	30.5	7.9	<5.0	40.6
Colonial	8	980	303.38	26.3	18.9	24.9	36.2	11.6	8.4	41.5
Delmar	8	173	306.77	22.0	9.8	29.5	40.5	12.1	8.1	33.6
Indian River	8	584	306.67	27.2	16.4	24.8	32.5	13.7	12.5	42.0
Lake Forest	8	331	301.71	24.3	18.4	28.1	37.2	10.3	6.0	41.7
Laurel	8	173	298.40	22.4	21.4	28.9	36.4	10.4	<5.0	46.1
Milford	8	366	303.77	27.8	17.8	27.6	31.4	12.0	11.2	40.0
Red Clay	8	1,391	298.01	30.3	28.3	23.4	29.3	9.8	9.2	35.4
Seaford	8	271	294.04	25.4	28.8	28.4	33.2	7.0	<5.0	52.7
Smyrna	8	349	304.72	24.9	15.8	25.2	40.1	11.2	7.7	22.5
Woodbridge	8	173	302.55	24.1	17.9	26.0	36.4	13.9	5.8	55.8

District Results—Science, Grade 11

State/District	Grade	Standards-Based Score N	Standards Based Score Mean	Standards Based Score SD	% Well Below Standard	% Below Standard	% Meets the Standard	% Exceeds	% Distinguished	District % FRPL Eligible
State of Delaware	11	6698	305.5	22.6	14.7	24.5	41.1	9.9	9.8	-
Appoquinimink	11	362	308.40	21.2	9.4	23.8	43.9	13.0	9.9	11.9
Brandywine	11	674	304.18	24.9	21.4	19.9	37.7	9.6	11.4	35.2
Caesar Rodney	11	342	310.05	19.1	7.9	20.2	47.4	16.4	8.2	29.1
Cape Henlopen	11	232	311.49	22.7	8.6	22.0	42.2	12.9	14.2	29.5
Capital	11	292	303.74	23.7	15.4	29.1	35.6	9.6	10.3	43.4
Christina	11	682	299.30	23.6	22.7	28.2	34.3	6.9	7.9	40.6
Colonial	11	415	303.33	19.9	13.0	31.8	39.3	9.6	6.3	41.5
Delmar	11	111	304.72	21.3	11.7	26.1	42.3	13.5	6.3	33.6
Indian River	11	364	301.42	22.2	20.3	26.4	37.6	8.8	6.9	42.0
Lake Forest	11	147	303.10	19.1	10.9	32.0	45.6	5.4	6.1	41.7
Laurel	11	93	297.62	17.3	25.8	24.7	46.2	<5.0	<5.0	46.1
Milford	11	213	310.38	21.3	10.3	19.2	45.5	11.7	13.1	40.0
New Castle County Vo Tech	11	787	303.83	18.0	11.9	26.8	48.9	8.5	<5.0	25.0
Polytech	11	279	306.64	19.4	11.1	23.3	50.2	7.2	8.2	20.1
Red Clay	11	969	312.91	25.8	11.2	18.1	37.8	11.9	21.1	35.4
Seaford	11	94	304.98	22.0	11.7	29.8	41.5	6.4	10.6	52.7
Smyrna	11	223	298.26	21.5	22.0	33.6	33.6	<5.0	6.7	22.5
Sussex Tech	11	265	310.02	19.0	8.7	18.5	49.4	15.5	7.9	22.3
Woodbridge	11	92	294.24	17.6	23.9	37.0	38.0	<5.0	<5.0	55.8

District Results—Social Studies, Grades 8

State/District	Grade	Standards-Based Score N	Standards Based Score Mean	Standards Based Score SD	% Well Below Standard	% Below Standard	% Meets the Standard	% Exceeds	% Distinguished	District % FRPL Eligible
State of Delaware	8	9780	300.3	21.3	19.4	29.9	37.7	7.5	5.4	—
Appoquinimink	8	576	306.01	18.6	9.5	25.5	49.7	9.4	5.9	11.9
Brandywine	8	852	304.19	23.0	15.3	28.3	36.2	10.3	10.0	35.2
Caesar Rodney	8	615	309.80	19.9	8.9	21.3	47.6	11.4	10.7	29.1
Cape Henlopen	8	326	303.80	19.4	14.1	24.5	47.9	8.6	<5.0	29.5
Capital	8	486	292.49	19.7	29.0	38.3	24.9	5.6	<5.0	43.4
Christina	8	1,454	295.72	20.4	24.9	33.0	34.3	<5.0	<5.0	40.6
Colonial	8	976	300.12	18.7	16.3	33.9	40.1	6.4	<5.0	41.5
Delmar	8	173	300.42	18.8	16.8	32.9	39.3	8.7	<5.0	33.6
Indian River	8	583	304.20	21.5	15.6	26.9	39.8	9.3	8.4	42.0
Lake Forest	8	331	299.31	19.5	21.1	28.4	39.0	9.4	<5.0	41.7
Laurel	8	173	294.13	16.7	23.7	41.0	31.2	<5.0	<5.0	46.1
Milford	8	365	300.35	20.9	18.9	30.1	39.7	6.0	5.2	40.0
Red Clay	8	1,387	297.21	22.9	26.2	27.8	34.0	7.1	<5.0	35.4
Seaford	8	269	294.03	20.8	27.9	32.3	34.6	<5.0	<5.0	52.7
Smyrna	8	351	299.76	19.3	16.5	31.1	42.5	6.6	<5.0	22.5
Woodbridge	8	172	297.37	18.6	20.9	36.0	34.3	7.0	<5.0	55.8

District Results—Social Studies, Grades 11

State/District	Grade	Standards-Based Score N	Standards Based Score Mean	Standards Based Score SD	% Well Below Standard	% Below Standard	% Meets the Standard	% Exceeds	% Distinguished	District % FRPL Eligible
State of Delaware	11	6660	298.8	28.2	21.7	27.2	32.9	8.8	9.3	—
Appoquinimink	11	358	305.68	26.9	14.2	22.9	39.9	8.9	14.0	11.9
Brandywine	11	669	298.45	31.3	24.7	23.6	29.6	11.1	11.1	35.2
Caesar Rodney	11	341	304.49	24.5	10.0	28.7	40.2	12.3	8.8	29.1
Cape Henlopen	11	228	305.97	27.2	14.5	26.3	35.1	10.1	14.0	29.5
Capital	11	292	295.12	29.9	24.3	32.2	27.4	7.9	8.2	43.4
Christina	11	675	292.45	28.2	30.1	27.6	29.6	6.1	6.7	40.6
Colonial	11	413	298.33	25.0	20.1	30.0	36.1	7.7	6.1	41.5
Delmar	11	111	294.57	27.6	31.5	21.6	29.7	9.9	7.2	33.6
Indian River	11	363	293.69	27.6	28.4	27.0	31.4	7.2	6.1	42.0
Lake Forest	11	147	294.65	26.0	23.1	32.7	34.0	<5.0	5.4	41.7
Laurel	11	92	287.57	25.1	31.5	32.6	30.4	<5.0	<5.0	46.1
Milford	11	213	301.18	25.3	19.2	23.5	39.9	8.0	9.4	40.0
New Castle County Vo Tech	11	784	292.61	21.8	22.6	37.9	32.9	<5.0	<5.0	25.0
Polytech	11	279	299.99	24.2	17.6	27.6	39.8	7.9	7.2	20.1
Red Clay	11	965	310.35	31.1	13.8	19.4	33.0	13.0	20.9	35.4
Seaford	11	91	293.12	27.1	30.8	24.2	31.9	8.8	<5.0	52.7
Smyrna	11	221	290.95	28.4	35.7	25.8	24.9	7.7	5.9	22.5
Sussex Technical	11	265	302.31	24.9	17.4	26.8	34.3	12.1	9.4	22.3
Woodbridge	11	91	286.86	25.0	31.9	38.5	18.7	7.7	<5.0	55.8

School Results—Science, Grades 8 and 11

District/School	Grade	Standards-Based Score N	Standards Based Score Mean	Standards Based Score SD	% Well Below Standard	% Below Standard	% Meets the Standard	% Exceeds	% Distinguished	School % FRPL Eligible
State of Delaware	8	9809	302.2	27.8	20.8	25.4	33.3	11.6	8.9	-
State of Delaware	11	6698	305.5	22.6	14.7	24.5	41.1	9.9	9.8	-
Appoquinimink										
Everett Meredith Middle School	8	328	315.58	23.5	6.7	17.1	43.0	18.9	14.3	9.6
Redding (Louis L.) Middle School	8	249	310.45	25.3	11.2	20.5	40.6	16.5	11.2	19.5
Middletown High School	11	362	308.40	21.2	9.4	23.8	43.9	13.0	9.9	9.0
Brandywine										
Mount Pleasant High School*	8	4	-	-	-	-	-	-	-	36.3
Hanby Middle School	8	330	309.44	26.6	13.9	20.3	38.2	13.6	13.9	33.3
Springer Middle School	8	311	305.44	31.4	18.3	21.9	32.5	15.4	11.9	36.0
Talley Middle School	8	211	295.63	29.8	30.8	30.8	21.8	7.6	9.0	52.2
Brandywine High School	11	260	304.15	26.2	21.5	19.2	37.7	8.5	13.1	27.3
Concord High School	11	239	306.90	22.2	15.1	20.9	42.7	10.5	10.9	25.1
Mount Pleasant High School	11	175	300.49	26.1	29.7	19.4	30.9	10.3	9.7	36.3
Caesar Rodney										
Caesar Rodney High School*	8	14	-	-	-	-	-	-	-	24.6
Dover Air Force Base Middle School	8	54	325.69	26.3	<5.0	11.1	33.3	24.1	27.8	14.9
F. Niel Postlethwait Middle School	8	248	311.16	22.5	7.7	22.6	44.8	14.9	10.1	24.8
Fred Fifer Middle School	8	299	310.01	26.7	13.0	19.1	40.5	15.1	12.4	33.1
Caesar Rodney High School	11	342	310.05	19.1	7.9	20.2	47.4	16.4	8.2	24.6
Cape Henlopen										
Beacon Middle School	8	162	316.58	25.0	9.3	13.0	37.7	24.1	16.0	26.9
Cape Henlopen High School*	8	8	-	-	-	-	-	-	-	27.7
Mariner Middle School	8	156	300.97	23.2	18.6	28.8	34.6	14.1	<5.0	40.9
Cape Henlopen High School	11	230	311.81	22.5	8.3	21.7	42.6	13.0	14.3	27.7
Capital										
Central Middle School	8	472	293.86	25.2	28.2	32.8	27.1	7.6	<5.0	47.6
Dover High School*	8	16	280.25	12.7	50.0	43.8	6.3	<5.0	<5.0	32.8
Dover High School	11	288	304.22	23.4	14.6	29.2	36.1	9.7	10.4	32.8

*This school has a readiness/transition academy, which serves students that were retained in eighth grade due to a performance level 1 on the 2005 Grade 8 DSTP in one or more content areas.

School Results—Science, Grades 8 and 11

District/School	Grade	Standards-Based Score N	Standards Based Score Mean	Standards Based Score SD	% Well Below Standard	% Below Standard	% Meets the Standard	% Exceeds	% Distinguished	School % FRPL Eligible
Christina										
Gauger-Cobbs Middle School	8	518	294.26	24.4	25.7	30.5	34.2	6.9	<5.0	39.0
George V. Kirk Middle School	8	484	295.78	23.1	25.8	30.4	33.7	7.2	<5.0	49.2
Shue-Medill Middle School	8	421	296.29	30.7	26.4	31.1	23.8	10.7	8.1	40.4
Christiana High School	11	145	294.79	21.2	22.8	35.9	35.2	<5.0	<5.0	33.0
Glasgow High School	11	238	298.47	20.6	22.3	31.5	34.5	6.3	5.5	37.1
Newark High School	11	283	303.70	26.2	20.1	21.6	35.7	9.2	13.4	28.7
Colonial										
George Read Middle School	8	325	291.93	22.9	31.1	30.8	29.5	6.8	<5.0	50.9
Gunning Bedford Middle School	8	431	312.55	25.8	10.0	19.5	42.2	14.2	14.2	31.9
New Castle Middle School	8	188	307.07	23.7	10.1	27.7	37.8	16.5	8.0	52.4
William Penn High School*	8	29	276.97	19.0	58.6	27.6	13.8	<5.0	<5.0	34.9
William Penn High School	11	409	303.71	19.7	12.0	32.3	39.6	9.8	6.4	34.9
Delmar										
Delmar Middle School	8	169	307.36	21.9	8.9	29.0	41.4	12.4	8.3	36.2
Delmar Senior High School*	8	4	-	-	-	-	-	-	-	31.1
Delmar Senior High School	11	111	304.72	21.3	11.7	26.1	42.3	13.5	6.3	31.1
Indian River										
Selbyville Middle School	8	196	311.87	26.8	12.8	20.4	34.2	14.8	17.9	39.5
Southern Delaware School of the Arts	8	47	322.72	24.1	<5.0	10.6	44.7	14.9	25.5	12.8
Sussex Central Middle School	8	326	302.94	25.9	18.1	29.1	31.3	13.5	8.0	45.1
Sussex Central Senior High School*	8	9	-	-	-	-	-	-	-	34.6
Indian River High School	11	150	309.57	22.1	14.0	18.0	41.3	14.7	12.0	27.4
Sussex Central Senior High School	11	212	296.04	20.3	24.1	32.5	35.4	<5.0	<5.0	34.6
Lake Forest										
Lake Forest High School*	8	5	-	-	-	-	-	-	-	31.4
W. T. Chipman Middle School	8	326	302.04	24.3	18.1	27.6	37.7	10.4	6.1	39.7
Lake Forest High School	11	147	303.10	19.1	10.9	32.0	45.6	5.4	6.1	31.4
Laurel										
Laurel Middle School	8	166	299.57	21.5	19.9	28.9	37.3	10.8	<5.0	46.2
Laurel Senior High School*	8	7	-	-	-	-	-	-	-	40.9
Laurel Senior High School	11	91	298.05	17.3	24.2	25.3	47.3	<5.0	<5.0	40.9

*This school has a readiness/transition academy, which serves students that were retained in eighth grade due to a performance level 1 on the 2004 Grade 8 DSTP in one or more content areas.

School Results—Science, Grades 8 and 11

State/District	Grade	Standards-Based Score N	Standards Based Score Mean	Standards Based Score SD	% Well Below Standard	% Below Standard	% Meets the Standard	% Exceeds	% Distinguished	School % FRPL Eligible
Milford										
Milford Middle School	8	357	304.32	27.7	16.8	27.5	31.9	12.3	11.5	42.4
Milford Senior High School*	8	9	-	-	-	-	-	-	-	30.3
Milford Senior High School	11	213	310.38	21.3	10.3	19.2	45.5	11.7	13.1	30.3
New Castle Co. Vocational Technical										
Delcastle Technical High School*	8	40	277.70	15.0	60.0	35.0	5.0	<5.0	<5.0	24.7
Howard High School of Technology*	8	16	277.06	16.3	62.5	31.3	6.3	<5.0	<5.0	14.5
Paul M. Hodgson Vo-Technical High*	8	53	280.43	15.8	45.3	41.5	13.2	<5.0	<5.0	37.9
Delcastle Technical High School	11	341	304.74	16.5	8.8	26.4	53.4	9.1	<5.0	24.7
Howard High School of Technology	11	253	308.62	18.1	7.9	20.9	51.4	12.6	7.1	14.5
Paul M. Hodgson Vo-Technical High	11	192	295.80	17.7	22.9	35.4	37.5	<5.0	<5.0	37.9
Polytech										
Polytech High School	11	279	306.64	19.4	11.1	23.3	50.2	7.2	8.2	20.1
Red Clay Consolidated										
A. I. duPont Middle School	8	147	281.02	22.6	49.0	29.3	19.7	<5.0	<5.0	57.4
Alexis I. duPont High School*	8	21	267.95	17.8	71.4	28.6	<5.0	<5.0	<5.0	24.9
Cab Calloway School of the Arts	8	135	316.76	21.7	<5.0	14.8	45.9	25.2	9.6	10.3
Conrad Middle School	8	202	285.57	21.9	35.1	40.1	21.8	<5.0	<5.0	60.1
HB duPont Middle School	8	300	314.36	28.6	12.3	16.3	34.7	15.3	21.3	17.4
John Dickinson High School*	8	14	-	-	-	-	-	-	-	33.0
Skyline Middle School	8	253	309.66	29.5	19.0	15.0	34.0	16.2	15.8	21.0
Stanton Middle School	8	252	292.01	24.1	29.0	31.0	32.9	<5.0	<5.0	45.8
Thomas McKean High School*	8	31	262.26	14.8	90.3	9.7	<5.0	<5.0	<5.0	33.6
Alexis I. duPont High School	11	210	310.30	23.1	9.5	21.4	42.4	12.9	13.8	24.9
Cab Calloway School of the Arts	11	93	310.14	20.7	7.5	21.5	50.5	8.6	11.8	10.3
Charter School of Wilmington	11	231	339.00	16.7	<5.0	<5.0	19.9	16.5	63.6	2.9
Delaware Military Academy	11	136	310.15	17.5	5.9	18.4	55.9	14.7	5.1	0.0
John Dickinson High School	11	136	298.33	20.0	21.3	33.1	35.3	7.4	<5.0	33.0
Thomas McKean High School	11	143	300.03	21.6	18.2	27.3	42.0	8.4	<5.0	33.6

*This school has a readiness/transition academy, which serves students that were retained in eighth grade due to a performance level 1 on the 2005 Grade 8 DSTP in one or more content areas.

School Results—Science, Grades 8 and 11

State/District	Grade	Standards-Based Score N	Standards Based Score Mean	Standards Based Score SD	% Well Below Standard	% Below Standard	% Meets the Standard	% Exceeds	% Distinguished	School % FRPL Eligible
Seaford										
Seaford Middle School	8	254	295.67	25.2	26.0	28.3	35.4	7.5	<5.0	57.2
Seaford Senior High School*	8	17	269.71	13.6	70.6	29.4	<5.0	<5.0	<5.0	40.7
Seaford Senior High School	11	94	304.98	22.0	11.7	29.8	41.5	6.4	10.6	40.7
Smyrna										
Smyrna High School*	8	9	-	-	-	-	-	-	-	16.9
Smyrna Middle School	8	340	305.37	24.8	15.0	24.7	40.9	11.5	7.9	23.1
Smyrna High School	11	223	298.26	21.5	22.0	33.6	33.6	<5.0	6.7	16.9
Sussex Technical										
Sussex Technical High School*	8	8	-	-	-	-	-	-	-	22.3
Sussex Technical High School	11	265	310.02	19.0	8.7	18.5	49.4	15.5	7.9	22.3
Woodbridge										
Wheatley Middle School	8	166	303.63	23.8	16.9	24.7	38.0	14.5	6.0	56.7
Woodbridge Senior High School*	8	7	-	-	-	-	-	-	-	44.6
Woodbridge Senior High School	11	92	294.24	17.6	23.9	37.0	38.0	<5.0	<5.0	44.6
Charter Schools										
Campus Community School	8	69	298.00	21.6	24.6	29.0	33.3	11.6	<5.0	21.6
Marion T. Academy Charter School	8	17	264.71	19.8	70.6	29.4	<5.0	<5.0	<5.0	0.0
MOT Charter School	8	73	313.48	23.1	6.8	20.5	41.1	16.4	15.1	7.0
Newark Charter School	8	159	334.46	25.1	<5.0	5.7	32.1	22.6	39.6	0.0
Positive Outcomes Charter School	8	18	279.72	21.1	50.0	27.8	22.2	<5.0	<5.0	35.1
Providence Creek Charter School	8	47	303.23	20.5	12.8	27.7	46.8	8.5	<5.0	25.5
Sussex Academy of Arts & Sciences	8	95	325.00	20.9	<5.0	12.6	32.6	29.5	25.3	14.0
Thomas A. Edison Charter School	8	58	291.47	17.6	25.9	48.3	19.0	6.9	<5.0	80.0
Campus Community School	11	31	308.19	17.8	6.5	22.6	48.4	16.1	6.5	21.6
Charter School of Wilmington	11	231	339.00	16.7	<5.0	<5.0	19.9	16.5	63.6	2.9
Delaware Military Academy	11	136	310.15	17.5	5.9	18.4	55.9	14.7	5.1	0.0
Positive Outcomes Charter School	11	9	-	-	-	-	-	-	-	35.1

*This school has a readiness/transition academy, which serves students that were retained in eighth grade due to a performance level 1 on the 2004 Grade 8 DSTP in one or more content areas.

School Results—Social Studies, Grades 8 and 11

District/School	Grade	Standards-Based Score N	Standards Based Score Mean	Standards Based Score SD	% Well Below Standard	% Below Standard	% Meets the Standard	% Exceeds	% Distinguished	School % FRPL Eligible
State of Delaware	8	9780	300.3	21.3	19.4	29.9	37.7	7.5	5.4	—
State of Delaware	11	6660	298.8	28.2	21.7	27.2	32.9	8.8	9.3	—
Appoquinimink										
Everett Meredith Middle School	8	328	307.25	19.1	10.1	22.0	50.3	10.4	7.3	9.6
Redding (Louis L.) Middle School	8	248	304.37	17.8	8.9	30.2	48.8	8.1	<5.0	19.5
Middletown High School	11	358	305.68	26.9	14.2	22.9	39.9	8.9	14.0	9.0
Brandywine										
Hanby Middle School	8	330	306.62	19.8	8.8	30.6	40.3	10.9	9.4	33.3
Mount Pleasant High School*	8	3	-	-	-	-	-	-	-	36.3
Springer Middle School	8	308	307.31	25.2	14.6	22.1	36.7	13.0	13.6	36.0
Talley Middle School	8	211	295.88	22.6	26.5	34.1	28.0	5.7	5.7	52.2
Brandywine High School	11	258	299.53	31.6	22.1	25.2	30.6	11.2	10.9	27.3
Concord High School	11	238	301.89	30.0	20.6	20.6	35.7	10.9	12.2	25.1
Mount Pleasant High School	11	173	292.10	32.0	34.1	25.4	19.7	11.0	9.8	36.3
Caesar Rodney										
Caesar Rodney High School*	8	14	-	-	-	-	-	-	-	24.6
Dover Air Force Base Middle School	8	54	319.72	16.8	<5.0	13.0	40.7	24.1	20.4	14.9
F. Niel Postlethwait Middle School	8	248	310.70	20.0	8.1	18.1	52.8	9.7	11.3	24.8
Fred Fifer Middle School	8	299	308.11	19.8	10.0	24.1	45.8	11.0	9.0	33.1
Caesar Rodney High School	11	341	304.49	24.5	10.0	28.7	40.2	12.3	8.8	24.6
Cape Henlopen										
Beacon Middle School	8	161	310.15	18.4	8.1	19.3	50.3	14.3	8.1	26.9
Cape Henlopen High School*	8	8	-	-	-	-	-	-	-	27.7
Mariner Middle School	8	155	298.52	18.4	18.7	28.4	47.7	<5.0	<5.0	40.9
Cape Henlopen High School	11	226	306.30	27.0	14.2	26.1	35.4	10.2	14.2	27.7
Capital										
Central Middle School	8	470	292.86	19.8	28.7	37.7	25.5	5.7	<5.0	47.6
Dover High School*	8	16	281.69	12.1	37.5	56.3	6.3	<5.0	<5.0	32.8
Dover High School	11	286	296.49	28.2	22.7	32.9	28.0	8.0	8.4	32.8

*This school has a readiness/transition academy, which serves students that were retained in eighth grade due to a performance level 1 on the 2005 Grade 8 DSTP in one or more content areas.

School Results—Social Studies, Grades 8 and 11

State/District	Grade	Standards-Based Score N	Standards Based Score Mean	Standards Based Score SD	% Well Below Standard	% Below Standard	% Meets the Standard	% Exceeds	% Distinguished	School % FRPL Eligible
Christina										
Gauger-Cobbs Middle School	8	520	294.43	18.9	26.7	33.1	35.0	<5.0	<5.0	39.0
George V. Kirk Middle School	8	479	295.14	18.0	23.6	36.5	34.4	<5.0	<5.0	49.2
Shue-Medill Middle School	8	419	299.32	23.2	21.2	30.3	34.4	7.4	6.7	40.4
Christiana High School	11	141	289.26	23.5	29.1	30.5	34.8	5.7	<5.0	33.0
Glasgow High School	11	238	291.21	26.1	29.0	30.7	29.4	6.3	<5.0	37.1
Newark High School	11	281	296.54	31.4	29.2	23.8	28.5	6.4	12.1	28.7
Colonial										
George Read Middle School	8	322	295.20	18.2	23.6	38.2	33.5	<5.0	<5.0	50.9
Gunning Bedford Middle School	8	431	305.99	18.0	9.3	27.8	46.9	10.2	5.8	31.9
New Castle Middle School	8	187	298.01	16.9	15.5	37.4	41.2	<5.0	<5.0	52.4
William Penn High School	8	29	284.41	13.8	41.4	51.7	6.9	<5.0	<5.0	34.9
William Penn High School	11	408	298.81	24.7	19.4	30.1	36.5	7.8	6.1	34.9
Delmar										
Delmar Middle School	8	169	300.65	18.9	16.6	32.5	39.6	8.9	<5.0	36.2
Delmar Senior High School*	8	4	-	-	-	-	-	-	-	31.1
Delmar Senior High School	11	111	294.57	27.6	31.5	21.6	29.7	9.9	7.2	31.1
Indian River										
Selbyville Middle School	8	196	308.44	21.3	12.8	22.4	40.8	12.8	11.2	39.5
Southern Delaware School of the Arts	8	47	318.83	17.3	<5.0	12.8	51.1	14.9	21.3	12.8
Sussex Central Middle School	8	326	300.52	20.6	18.1	31.0	39.0	6.7	5.2	45.1
Sussex Central Senior High School*	8	9	-	-	-	-	-	-	-	34.6
Indian River High School	11	149	303.45	29.1	20.1	20.8	38.3	6.7	14.1	27.4
Sussex Central Senior High School	11	212	287.32	24.0	33.5	31.6	26.9	7.5	<5.0	34.6
Lake Forest										
Lake Forest High School*	8	5	-	-	-	-	-	-	-	31.4
W. T. Chipman Middle School	8	326	299.58	19.5	20.6	28.2	39.6	9.5	<5.0	39.7
Lake Forest High School	11	147	294.65	26.0	23.1	32.7	34.0	<5.0	5.4	31.4
Laurel										
Laurel Middle School	8	166	294.57	16.4	22.3	41.6	31.9	<5.0	<5.0	46.2
Laurel Senior High School*	8	7	-	-	-	-	-	-	-	40.9
Laurel Senior High School	11	90	288.43	24.7	30.0	33.3	31.1	<5.0	<5.0	40.9

*This school has a readiness/transition academy, which serves students that were retained in eighth grade due to a performance level 1 on the 2005 Grade 8 DSTP in one or more content areas.

School Results—Social Studies, Grades 8 and 11

State/District	Grade	Standards-Based Score N	Standards Based Score Mean	Standards Based Score SD	% Well Below Standard	% Below Standard	% Meets the Standard	% Exceeds	% Distinguished	School % FRPL Eligible
Milford										
Milford Middle School	8	356	300.68	20.9	18.3	30.1	40.2	6.2	5.3	42.4
Milford Senior High School*	8	9	-	-	-	-	-	-	-	30.3
Milford Senior High School	11	213	301.18	25.3	19.2	23.5	39.9	8.0	9.4	30.3
New Castle Co. Vocational Technical										
Delcastle Technical High School*	8	40	282.35	11.9	45.0	52.5	<5.0	<5.0	<5.0	24.7
Howard High School of Technology*	8	52	286.46	15.1	30.8	50.0	19.2	<5.0	<5.0	37.9
Paul M. Hodgson Vo-Technical High*	8	16	285.13	15.0	50.0	31.3	18.8	<5.0	<5.0	14.5
Delcastle Technical High School	11	340	293.69	20.3	20.3	38.5	36.5	<5.0	<5.0	24.7
Howard High School of Technology	11	190	284.48	22.4	33.2	40.5	23.2	<5.0	<5.0	37.9
Paul M. Hodgson Vo-Technical High	11	253	297.38	21.7	17.4	35.2	35.6	7.9	<5.0	14.5
Polytech										
Polytech High School	11	279	299.99	24.2	17.6	27.6	39.8	7.9	7.2	20.1
Red Clay Consolidated										
A. I. duPont Middle School	8	147	285.11	18.9	46.3	29.3	22.4	<5.0	<5.0	57.4
Alexis I. duPont High School*	8	21	272.48	15.5	76.2	19.0	<5.0	<5.0	<5.0	24.9
Cab Calloway School of the Arts	8	135	309.82	19.5	8.9	16.3	52.6	13.3	8.9	10.3
Conrad Middle School	8	202	290.90	18.9	29.7	41.1	25.2	<5.0	<5.0	60.1
HB duPont Middle School	8	299	309.87	22.8	12.0	19.4	39.8	15.7	13.0	17.4
John Dickinson High School*	8	15	278.67	17.8	60.0	26.7	13.3	<5.0	<5.0	33.0
Skyline Middle School	8	253	300.42	19.6	19.0	28.9	42.7	5.5	<5.0	21.0
Stanton Middle School	8	253	295.46	18.9	24.5	35.6	34.0	<5.0	<5.0	45.8
Thomas McKean High School*	8	28	272.54	13.1	71.4	28.6	<5.0	<5.0	<5.0	33.6
Alexis I. duPont High School	11	210	307.19	26.8	12.9	20.5	37.6	13.8	15.2	24.9
Cab Calloway School of the Arts	11	93	307.82	22.8	10.8	23.7	41.9	12.9	10.8	10.3
Charter School of Wilmington	11	231	341.53	19.1	<5.0	<5.0	19.5	19.0	60.6	2.9
Delaware Military Academy	11	136	308.76	20.1	5.1	24.3	50.0	13.2	7.4	0.0
John Dickinson High School	11	133	290.02	26.3	30.1	30.1	30.1	8.3	<5.0	33.0
Thomas McKean High School	11	141	295.55	28.0	21.3	31.9	33.3	7.8	5.7	33.6

*This school has a readiness/transition academy, which serves students that were retained in eighth grade due to a performance level 1 on the 2005 Grade 8 DSTP in one or more content areas.

School Results—Social Studies, Grades 8 and 11

State/District	Grade	Standards-Based Score N	Standards Based Score Mean	Standards Based Score SD	% Well Below Standard	% Below Standard	% Meets the Standard	% Exceeds	% Distinguished	School % FRPL Eligible
Seaford										
Seaford Middle School	8	253	294.80	20.7	26.5	32.0	36.0	<5.0	<5.0	57.2
Seaford Senior High School*	8	16	281.88	18.1	50.0	37.5	12.5	<5.0	<5.0	40.7
Seaford Senior High School	11	91	293.12	27.1	30.8	24.2	31.9	8.8	<5.0	40.7
Smyrna										
Smyrna High School*	8	10	-	-	-	-	-	-	-	16.9
Smyrna Middle School	8	341	300.22	19.3	15.2	31.7	42.8	6.7	<5.0	23.1
Smyrna High School	11	221	290.95	28.4	35.7	25.8	24.9	7.7	5.9	16.9
Sussex Technical										
Sussex Technical High School*	8	8	-	-	-	-	-	-	-	22.3
Sussex Technical High School	11	265	302.31	24.9	17.4	26.8	34.3	12.1	9.4	22.3
Woodbridge										
Wheatley Middle School	8	165	298.01	18.5	19.4	37.0	34.5	7.3	<5.0	56.7
Woodbridge Senior High School*	8	7	-	-	-	-	-	-	-	44.6
Woodbridge Senior High School	11	91	286.86	25.0	31.9	38.5	18.7	7.7	<5.0	44.6
Charter Schools										
Campus Community School	8	69	299.36	17.9	17.4	37.7	37.7	5.8	<5.0	21.6
Marion T. Academy Charter School	8	16	281.63	14.2	50.0	31.3	18.8	<5.0	<5.0	0.0
MOT Charter School	8	73	311.74	20.1	8.2	23.3	38.4	17.8	12.3	7.0
Newark Charter School	8	159	321.77	17.7	<5.0	9.4	45.9	18.9	24.5	0.0
Positive Outcomes Charter School	8	18	283.22	16.0	44.4	33.3	22.2	<5.0	<5.0	35.1
Providence Creek Charter School	8	47	301.49	13.7	8.5	38.3	51.1	<5.0	<5.0	25.5
Sussex Academy of Arts & Sciences	8	95	319.03	16.0	<5.0	12.6	48.4	22.1	16.8	14.0
Thomas A. Edison Charter School	8	58	294.55	16.8	20.7	48.3	24.1	<5.0	5.2	80.0
Campus Community School	11	31	308.90	16.2	<5.0	32.3	51.6	12.9	<5.0	21.6
Charter School of Wilmington	11	231	341.53	19.1	<5.0	<5.0	19.5	19.0	60.6	2.9
Delaware Military Academy	11	136	308.76	20.1	5.1	24.3	50.0	13.2	7.4	0.0
Positive Outcomes Charter School	11	9	-	-	-	-	-	-	-	35.1

*This school has a readiness/transition academy, which serves students that were retained in eighth grade due to a performance level 1 on the 2005 Grade 8 DSTP in one or more content areas.

Special Schools—Science, Grades 8 and 11

State/District	Grade	Standards-Based Score N	Standards Based Score Mean	Standards Based Score SD	% Well Below Standard	% Below Standard	% Meets the Standard	% Exceeds	% Distinguished
Cape Henlopen									
Sussex Consortium ILC	8	2	-	-	-	-	-	-	-
Sussex Consortium ILC	11	2	-	-	-	-	-	-	-
Capital									
Kent County Secondary ILC	11	4	-	-	-	-	-	-	-
Christina									
Brennen School	8	3	-	-	-	-	-	-	-
Douglass Alternative	8	26	258.81	24.9	80.8	15.4	<5.0	<5.0	<5.0
Margaret S. Sterck School	8	8	-	-	-	-	-	-	-
Douglass Alternative	11	8	-	-	-	-	-	-	-
Sarah Pyle Academy	11	5	-	-	-	-	-	-	-
Margaret S. Sterck School	11	3	-	-	-	-	-	-	-
Colonial									
Commodore MacDonough	8	7	-	-	-	-	-	-	-
Commodore MacDonough	11	6	-	-	-	-	-	-	-
Indian River									
Richard Allen School	8	6	-	-	-	-	-	-	-
Richard Allen School	11	2	-	-	-	-	-	-	-
Laurel									
W Sussex Academy	11	2	-	-	-	-	-	-	-
Red Clay Consolidated									
The Community School	8	16	256.81	24.6	87.5	12.5	<5.0	<5.0	<5.0
The Community School	11	6	-	-	-	-	-	-	-
First State School	8	2	-	-	-	-	-	-	-
Central School	8	18	240.28	13.4	>95.0	<5.0	<5.0	<5.0	<5.0
Central School	11	14	-	-	-	-	-	-	-

Special Schools—Science, Grades 8 and 11

State/District	Grade	Standards-Based Score N	Standards Based Score Mean	Standards Based Score SD	% Well Below Standard	% Below Standard	% Meets the Standard	% Exceeds	% Distinguished
Department Services Children, Youth and Families									
Ferris School	8	10	-	-	-	-	-	-	-
Ferris School	11	7	-	-	-	-	-	-	-
Grace and Snowden Cottages	8	3	-	-	-	-	-	-	-
Grace and Snowden Cottages	11	2	-	-	-	-	-	-	-
Multiple Alternative Program	11	1	-	-	-	-	-	-	-
NCC Detention Center	8	17	264.94	24.2	70.6	17.6	11.8	<5.0	<5.0
NCC Detention Center	11	2	-	-	-	-	-	-	-
Northeast Treatment Center	8	2	-	-	-	-	-	-	-
Peoples Place Non-Secure Detent.	8	1	-	-	-	-	-	-	-
Peoples Place Non-Secure Detent.	11	1	-	-	-	-	-	-	-
Seaford House Day Treatment Center	8	2	-	-	-	-	-	-	-
Seaford House Day Treatment Center	11	2	-	-	-	-	-	-	-
Silver Lake Treatment Center	8	3	-	-	-	-	-	-	-
Silver Lake Treatment Center	11	3	-	-	-	-	-	-	-
Stevenson House Detention Center	8	3	-	-	-	-	-	-	-
Stevenson House Detention Center	11	5	-	-	-	-	-	-	-

Special Schools—Social Studies, Grades 8 and 11

State/District	Grade	Standards-Based Score N	Standards Based Score Mean	Standards Based Score SD	% Well Below Standard	% Below Standard	% Meets the Standard	% Exceeds	% Distinguished
Cape Henlopen									
Sussex Consortium ILC	8	2	-	-	-	-	-	-	-
Sussex Consortium ILC	11	2	-	-	-	-	-	-	-
Capital									
Kent County Secondary ILC	11	6	-	-	-	-	-	-	-
Christina									
Brennen School	8	3	-	-	-	-	-	-	-
Douglass Alternative	8	25	269.72	21.2	72.0	20.0	8.0	<5.0	<5.0
Margaret S. Sterck School	8	8	-	-	-	-	-	-	-
Douglass Alternative	11	8	-	-	-	-	-	-	-
Sarah Pyle Academy	11	4	-	-	-	-	-	-	-
Margaret S. Sterck School	11	3	-	-	-	-	-	-	-
Colonial									
Commodore MacDonough	8	7	-	-	-	-	-	-	-
Commodore MacDonough	11	5	-	-	-	-	-	-	-
Indian River									
Richard Allen School	8	5	-	-	-	-	-	-	-
Richard Allen School	11	2	-	-	-	-	-	-	-
Laurel									
W Sussex Academy	11	2	-	-	-	-	-	-	-
Red Clay Consolidated									
Central School	8	18	253.33	14.4	>95.0	<5.0	<5.0	<5.0	<5.0
Central School	11	14	-	-	-	-	-	-	-
Community School	8	14	-	-	-	-	-	-	-
Community School	11	7	-	-	-	-	-	-	-
First State School	8	2	-	-	-	-	-	-	-

Special Schools—Social Studies, Grades 8 and 11

	Grade	Standards-Based Score N	Standards Based Score Mean	Standards Based Score SD	% Well Below Standard	% Below Standard	% Meets the Standard	% Exceeds	% Distinguished
State/District									
Department Services Children, Youth and Their Families									
Ferris School	8	10	-	-	-	-	-	-	-
Ferris School	11	7	-	-	-	-	-	-	-
Grace and Snowden Cottages	8	3	-	-	-	-	-	-	-
Grace and Snowden Cottages	11	2	-	-	-	-	-	-	-
Multiple Alternative Program	11	1	-	-	-	-	-	-	-
NCC Detention Center	8	17	267.53	27.0	76.5	23.5	<5.0	<5.0	<5.0
NCC Detention Center	11	2	-	-	-	-	-	-	-
Northeast Treatment Center	8	2	-	-	-	-	-	-	-
Peoples Place Non-Secure Detent.	11	1	-	-	-	-	-	-	-
Seaford House Day Treatment Center	8	2	-	-	-	-	-	-	-
Seaford House Day Treatment Center	11	2	-	-	-	-	-	-	-
Silver Lake Treatment Center	8	3	-	-	-	-	-	-	-
Silver Lake Treatment Center	11	3	-	-	-	-	-	-	-
Stevenson House Detention Center	8	3	-	-	-	-	-	-	-
Stevenson House Detention Center	11	5	-	-	-	-	-	-	-

DAPA Science District Results— Grades 8 and 11

District	Grade	Standards-Based Score N	% Well Below Standard	% Below Standard	% Meets the Standard	% Exceeds	% Distinguished	District % FRPL Eligible
Appoquinimink	8	1	-	-	-	-	-	11.9
Caesar Rodney	8	27	7.4	<5.0	7.4	29.6	51.9	29.1
Cape Henlopen	8	5	-	-	-	-	-	29.5
Capital	8	13	-	-	-	-	-	43.4
Christina	8	21	9.5	9.5	19.0	14.3	47.6	40.6
Colonial	8	16	6.3	18.8	12.5	43.8	18.8	41.5
Delmar	8	1	-	-	-	-	-	33.6
Indian River	8	13	-	-	-	-	-	42.0
Lake Forest	8	1	-	-	-	-	-	41.7
Laurel	8	2	-	-	-	-	-	46.1
Red Clay Consolidated	8	8	-	-	-	-	-	35.4
Seaford	8	8	-	-	-	-	-	52.7
Smyrna	8	1	-	-	-	-	-	22.5
Appoquinimink	11	3	-	-	-	-	-	11.9
Brandywine	11	2	-	-	-	-	-	35.2
Caesar Rodney	11	23	<5.0	8.7	<5.0	8.7	82.6	29.1
Cape Henlopen	11	4	-	-	-	-	-	29.5
Capital	11	7	-	-	-	-	-	43.4
Christina	11	19	<5.0	10.5	15.8	47.4	26.3	40.6
Colonial	11	19	<5.0	5.3	15.8	57.9	21.1	41.5
Delmar	11	2	-	-	-	-	-	33.6
Indian River	11	9	-	-	-	-	-	42.0
Lake Forest	11	2	-	-	-	-	-	41.7
Laurel	11	4	-	-	-	-	-	46.1
New Castle County Vo Tech	11	7	-	-	-	-	-	25.0
Red Clay Consolidated	11	7	-	-	-	-	-	35.4
Seaford	11	6	-	-	-	-	-	52.7

DAPA Social Studies District Results— Grades 8 and 11

District	Grade	Standards-Based Score N	% Well Below Standard	% Below Standard	% Meets the Standard	% Exceeds	% Distinguished	District % FRPL Eligible
Appoquinimink	8	1	-	-	-	-	-	11.9
Caesar Rodney	8	27	7.4	<5.0	18.5	14.8	55.6	29.1
Cape Henlopen	8	5	-	-	-	-	-	29.5
Capital	8	13	-	-	-	-	-	43.4
Christina	8	21	19.0	<5.0	19.0	14.3	42.9	40.6
Colonial	8	16	<5.0	12.5	12.5	56.3	18.8	41.5
Delmar	8	1	-	-	-	-	-	33.6
Indian River	8	13	-	-	-	-	-	42.0
Lake Forest	8	1	-	-	-	-	-	41.7
Laurel	8	2	-	-	-	-	-	46.1
Red Clay Consolidated	8	8	-	-	-	-	-	35.4
Seaford	8	8	-	-	-	-	-	52.7
Smyrna	8	1	-	-	-	-	-	22.5
Woodbridge	8	3	-	-	-	-	-	55.8
Appoquinimink	11	3	-	-	-	-	-	11.9
Brandywine	11	2	-	-	-	-	-	35.2
Caesar Rodney	11	23	<5.0	<5.0	8.7	8.7	78.3	29.1
Cape Henlopen	11	4	-	-	-	-	-	29.5
Capital	11	7	-	-	-	-	-	43.4
Christina	11	19	<5.0	5.3	10.5	47.4	36.8	40.6
Colonial	11	19	<5.0	21.1	21.1	31.6	26.3	41.5
Delmar	11	2	-	-	-	-	-	33.6
Indian River	11	9	-	-	-	-	-	42.0
Lake Forest	11	2	-	-	-	-	-	41.7
Laurel	11	4	-	-	-	-	-	46.1
New Castle County Vo Tech	11	7	-	-	-	-	-	25.0
Red Clay Consolidated	11	7	-	-	-	-	-	35.4
Seaford	11	6	-	-	-	-	-	52.7