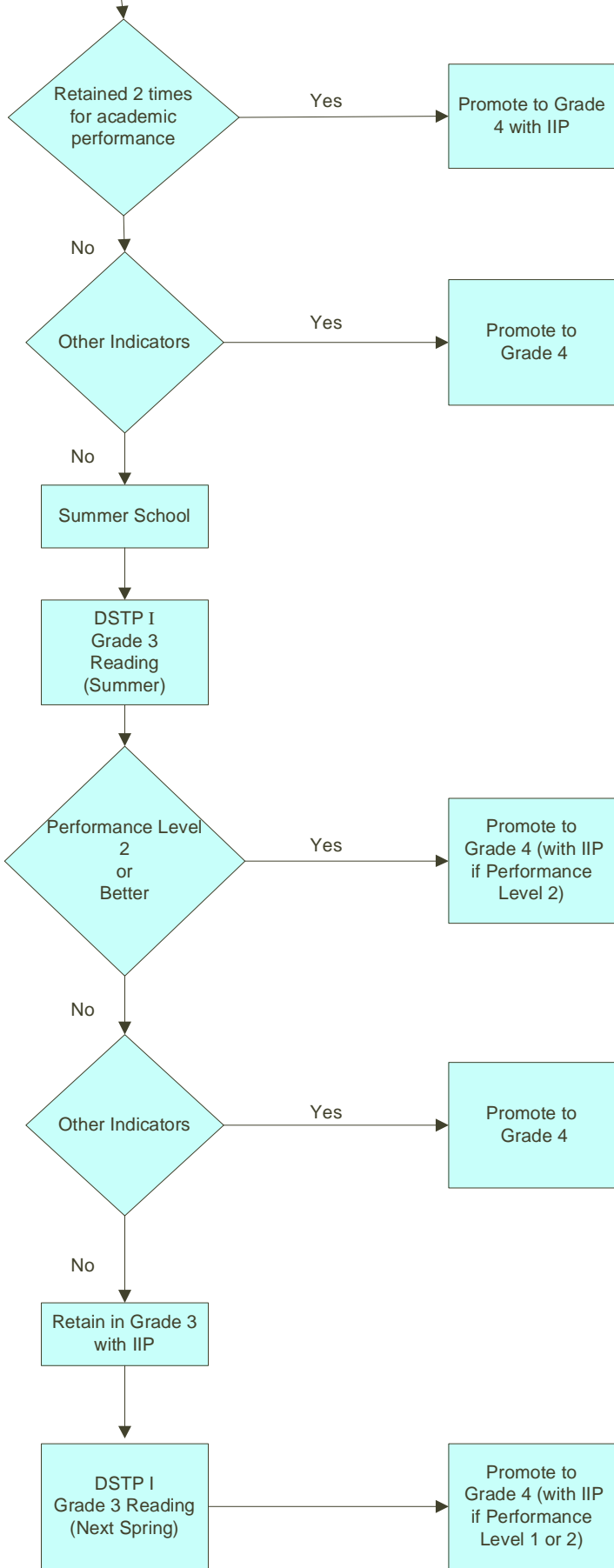


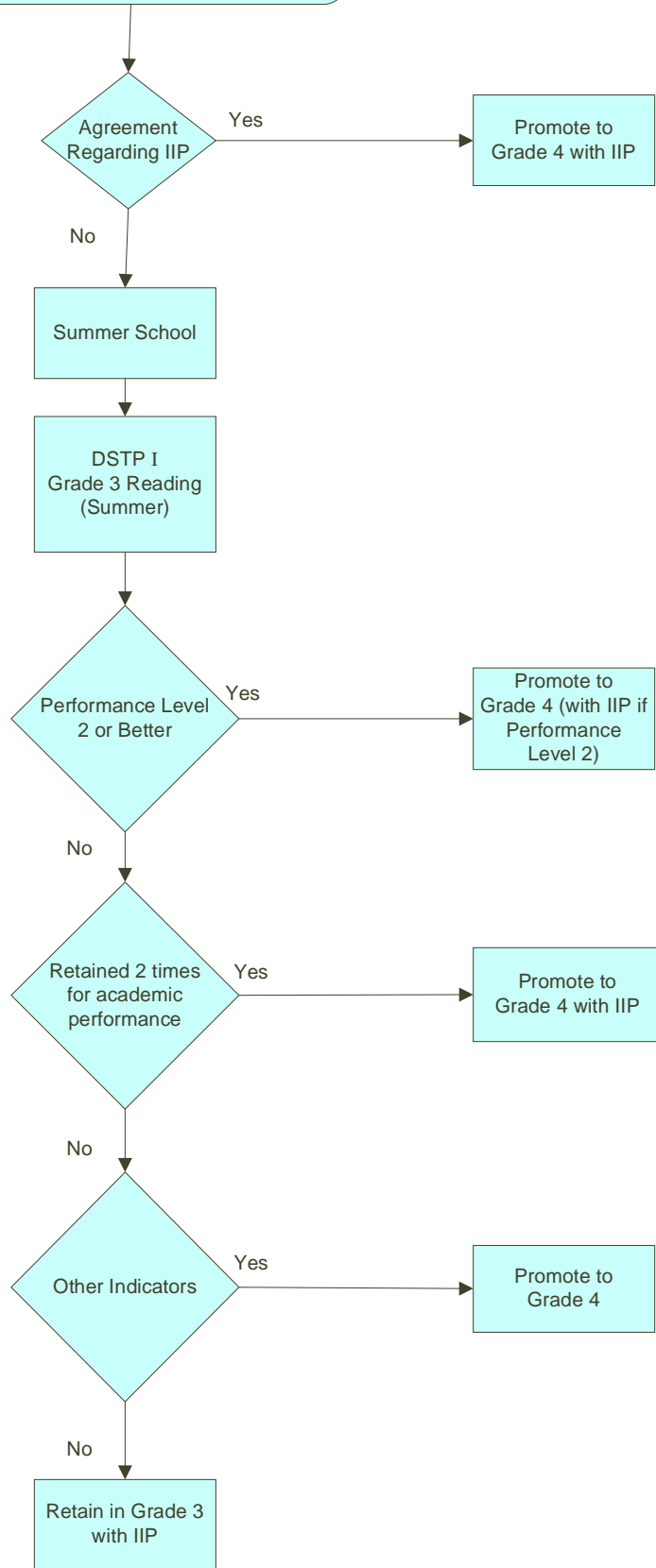
**DSTP Reading Grade 3
Performance Level 1
(9 May 2006)**

* Promote means eligible to be promoted because of the DSTP but must meet local district requirements and requirements set forth in 14 Delaware Code section 122 (b)(4).



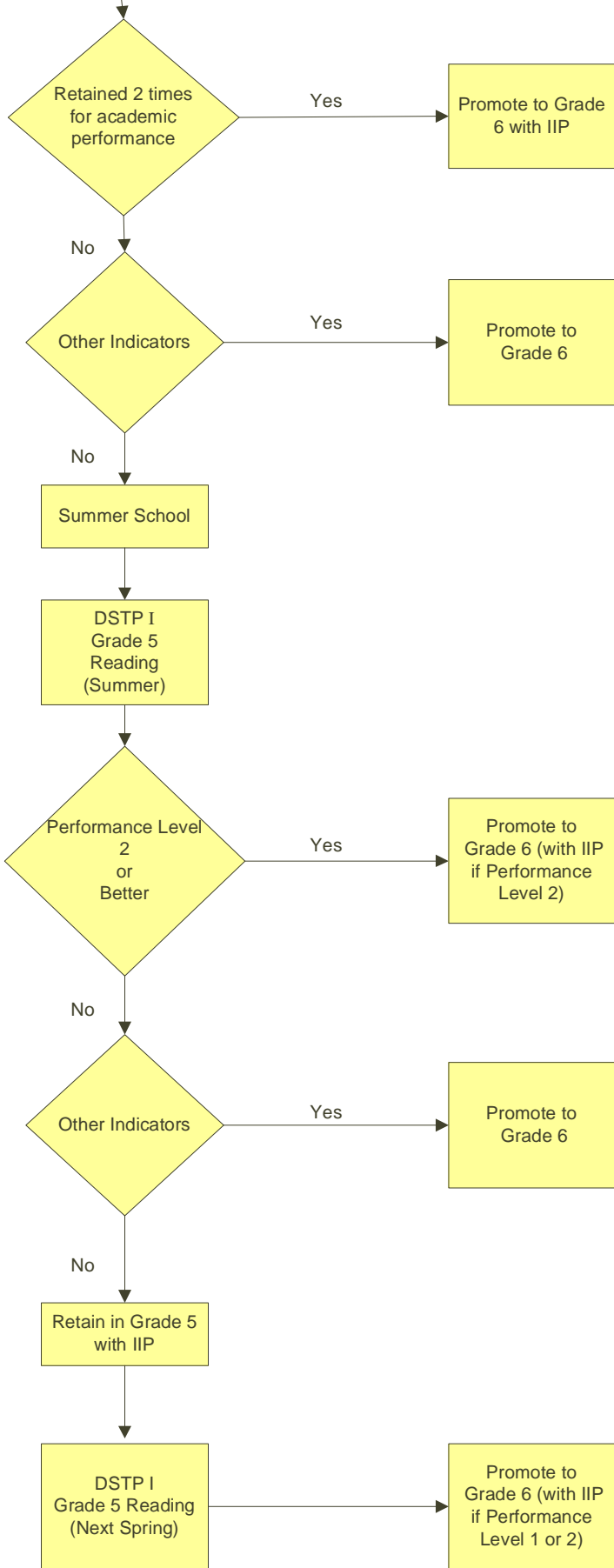
**DSTP Reading Grade 3
Performance Level 2
(9 May 2006)**

* Promote means eligible to be promoted because of the DSTP but must meet local district requirements and requirements set forth in 14 Delaware Code section 122 (b)(4).



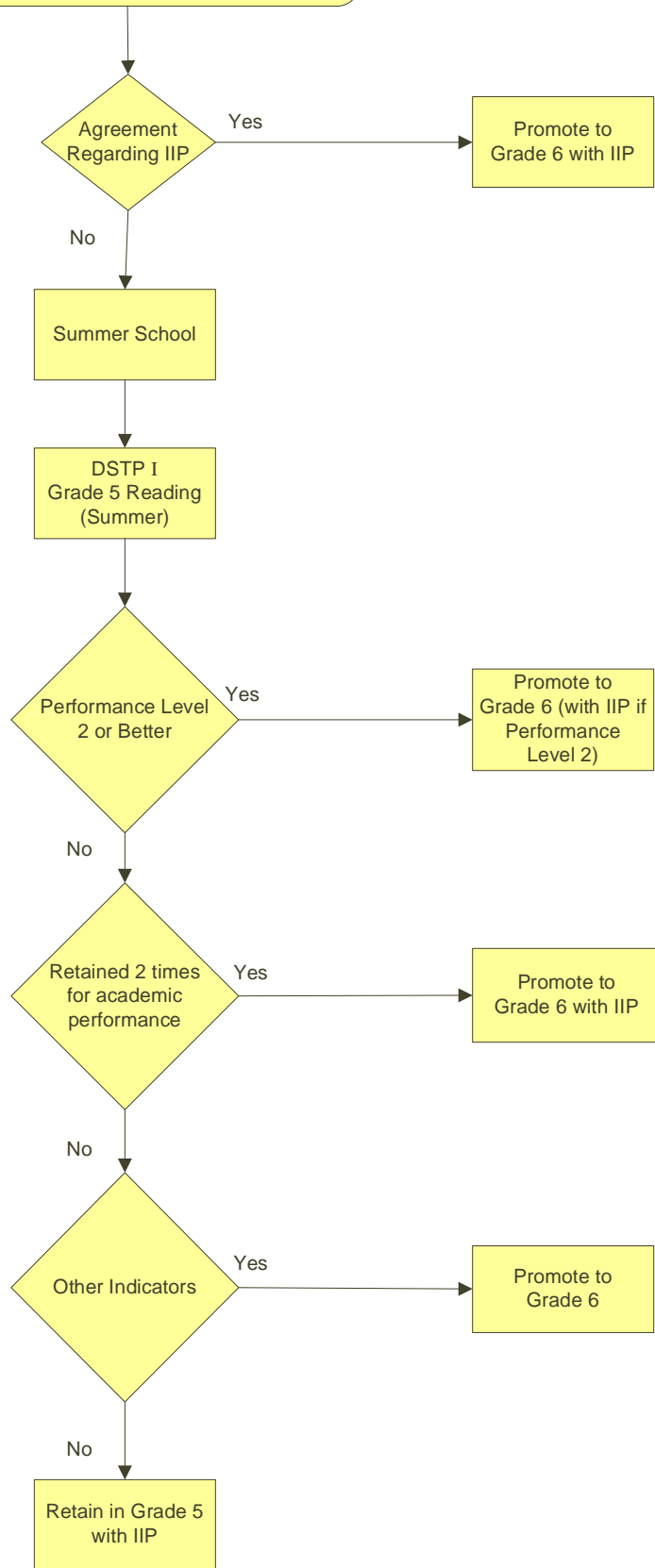
**DSTP Reading Grade 5
Performance Level 1**
(9 May 2006)

* Promote means eligible to be promoted because of the DSTP but must meet local district requirements and requirements set forth in 14 Delaware Code section 122 (b)(4).



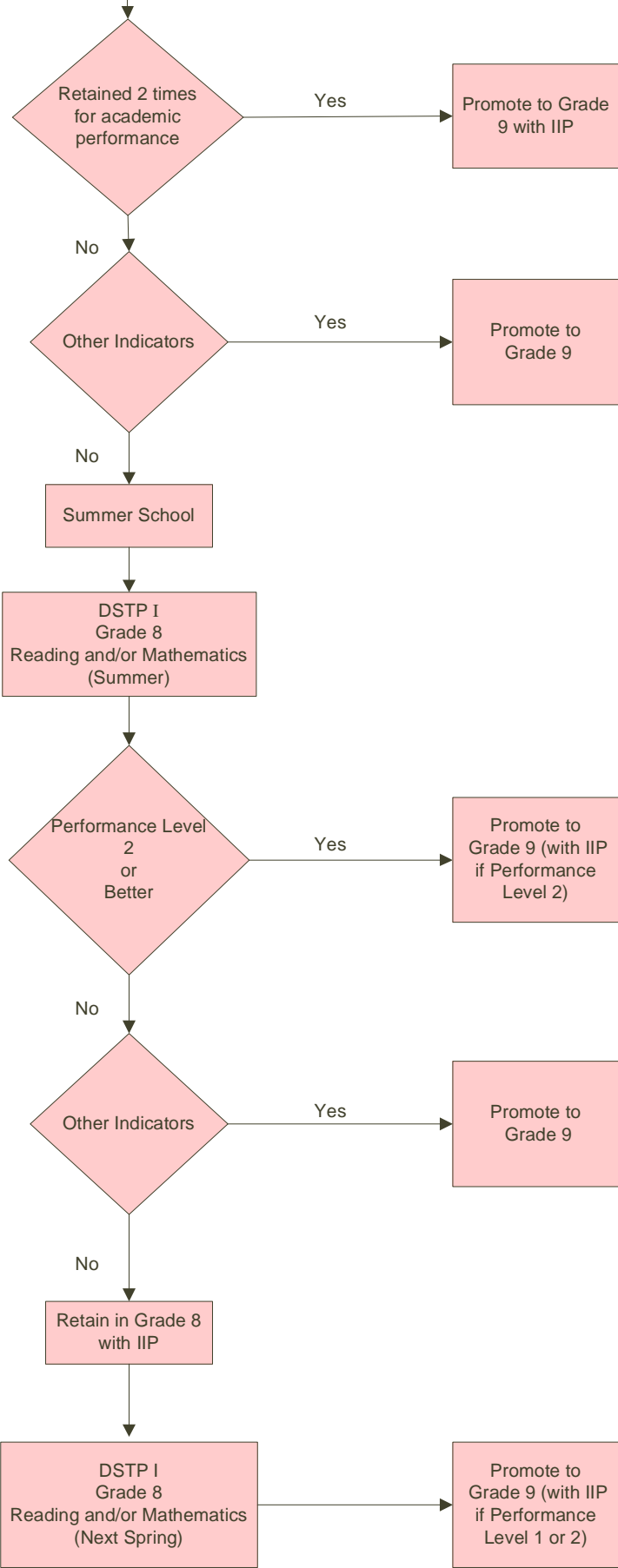
**DSTP Reading Grade 5
Performance Level 2
(9 May 2006)**

* Promote means eligible to be promoted because of the DSTP but must meet local district requirements and requirements set forth in 14 Delaware Code section 122 (b)(4).



**DSTP Reading and/or Mathematics
Grade 8
Performance Level 1
(7 June 2006)**

* Promote means eligible to be promoted because of the DSTP but must meet local district requirements and requirements set forth in 14 Delaware Code section 122 (b)(4).



**DSTP Reading and/or Mathematics
Grade 8
Performance Level 2
(9 May 2006)**

* Promote means eligible to be promoted because of the DSTP but must meet local district requirements and requirements set forth in 14 Delaware Code section 122 (b)(4).

