

Delaware Student Testing Program Guidelines for Inclusion of Students with Disabilities and English Language Learners



Published April 30, 2007

Please destroy the old 2006-2007 Guidelines for Inclusion

This document covers the period
May 1, 2007 to April 30, 2008.

Prepared by the Assessment and Analysis Group
Assessment and Accountability Branch
Delaware Department of Education

Available online at www.doe.k12.de.us/aab/

OFFICERS OF THE DELAWARE DEPARTMENT OF EDUCATION

Valerie A. Woodruff
Secretary of Education

Nancy J. Wilson, Ph.D.
Deputy Secretary of Education

Susan Keene-Haberstroh
Executive Assistant

Robin R. Taylor, M.Ed.
Associate Secretary, Assessment and Accountability Branch

Michael R. Owens, Ed.D.
Associate Secretary, Adult Education and Workforce Development Branch

Martha A. Brooks, Ed.D.
Associate Secretary, Curriculum and Instructional Improvement Branch

Dorcell S. Spence
Associate Secretary, Finance and Administrative Services Branch

The Department of Education does not discriminate in employment or educational programs, services or activities, based on race, color, national origin, age or handicap in accordance with state and federal laws. Inquiries should be directed to the Department of Education, Human Resources and Quality Management, 401 Federal Street, Suite #2, Dover, Delaware 19901, (302) 735-4025.

This publication is available in microfiche from the Bureau of Archives and Records, Hall of Records, P.O. Box 1401, Dover, Delaware, 19903.

Document No. 95-01/07/04/06



Table of Contents

TABLE OF CONTENTS.....	3
OVERVIEW OF THE GUIDELINES FOR INCLUSION.....	7
What is this document for?	7
To which students do these <i>Guidelines</i> apply?	7
What is an English Language Learner?	8
Monitoring the Implementation of Guidelines for Inclusion	8
CHANGES AND CLARIFICATIONS	9
Parent Withdrawals from English as a Second Language (ESL) or Bilingual Services	9
Scribing Protocol for American Sign Language	9
“Special Flexibility” for ELLs is Now Called “Exemption” for ELLs	9
Exemptions from Reading and Writing DSTP for ELLs	9
Exemptions from Science and Social Studies DSTP for ELLs	10
Computer Accommodations:	10
Aggregable Scores and Non-Aggregable Scores in Accountability	10
SECTION I: STUDENTS WITH DISABILITIES	11
Use of <i>Student With Disabilities Form</i>	11
Accommodation, Participation and Exemption Decisions	11
Testing Conditions.....	12
Testing Condition 2: Accommodations That Permit Aggregation of Test Scores	13
Reporting	13
Figure 1. Decision Rules for Testing Conditions: Students with Disabilities	14
Accommodations for the Presentation or Reception of the Test	15
Accommodations for Interaction or Processing During the Test	15
Accommodations for Student Responses	16
Testing Condition 3: Accommodations that Produce Non-Aggregated Scores	17
Reporting	17
Testing Condition 3 Accommodations	17
Requesting Unique Accommodations	18
Testing Condition 4: Participation in the Delaware Alternate Portfolio Assessment (DAPA).....	19
Participation	19
Documentation	19

Criteria	19
Participation in DAPA	20
Testing Condition 5: Exemption of SD/ELL Students from the DSTP	20
Documentation and Criteria.....	20
Exemption from the DSTP Science and Social Studies Assessments.....	21
Exemptions from the Science and Social Studies Tests.....	21
Exemption from the DSTP Reading and Writing Assessments	21
Exemption from the Reading and Writing Tests.....	22
STUDENT WITH DISABILITIES FORM	23
SECTION II: ENGLISH LANGUAGE LEARNERS (ELLS).....	25
Eligibility	25
Parent Withdrawals from English as a Second Language (ESL) or Bilingual Services	25
Criteria for Identifying the ELL Student	26
Home language survey:	26
ACCESS (Assessing Comprehension and Communication in English State to State):	26
Accommodation, Participation, and Exemption Decisions	26
Testing Conditions.....	27
Testing Condition 2: Accommodations that Permit Aggregation of Test Scores .	28
Testing Condition 3: Accommodations that Produce Non-Aggregable Test Scores	
.....	29
Reporting	29
Accommodations Permitted.....	29
Requesting Unique Accommodations.....	30
Figure 2. Decisions for Testing Conditions: ELL Students	31
Testing Condition 5: Exemption of ELL Students from the DSTP	32
Criteria for Receiving an Exemption from the Science and Social Studies Tests.....	32
Exemption from Science and Social Studies Tests	32
Criteria for Receiving an Exemption from the Reading and Writing Tests	32
Exemption from the Reading and Writing Tests.....	33
ENGLISH LANGUAGE LEARNER ACCOMMODATIONS FORM.....	34
A NOTE ABOUT TEST SECURITY.....	36
TEST SECURITY POLICY.....	37
APPENDIX A	40
Scribing Protocol for DSTP	40

Choosing a Scribe	40
Scribing Process.....	40
Scribing Protocol for Students Having the DSTP Presented in American Sign Language	42
Choosing a Scribe:	42
Scribing Process:.....	42
APPENDIX B	44
Instructions for Submitting a Unique Accommodation Request	44
APPENDIX C	48
Students with Disabilities Unique Accommodation Worksheet	48
APPENDIX D	50
English Language Learners Unique Accommodation Worksheet	50
Appendix E	52
Directions for Entering or Updating DSTP Accommodations for Students with Disabilities in DELSIS	52
Directions for Entering or Updating DSTP Accommodations for ELL Students in DELSIS	53
APPENDIX F.....	54
Delaware Alternate Portfolio Assessment Participation Guidelines	54
APPENDIX G	56
List of Acronyms	56



Overview of the Guidelines for Inclusion

What is this document for?

This document provides guidelines for making decisions about:

- the inclusion of students with disabilities and English language learners; and
- the provision of testing accommodations; and
- the type of assessment in which a student will participate.

To which students do these *Guidelines* apply?

The students to which these *Guidelines* apply:

- have disabilities designated under the Individuals with Disabilities Education Act (IDEA); and/or
- qualify under Section 504 of the Rehabilitation Act; and/or
- are ELL students, that is, students identified as English Language Learners (ELLs) by use of the home language survey and the English proficiency assessment, Assessing Comprehension and Communication in English State-to-State (ACCESS) according to the Delaware and U.S. Department of Education definitions.
- are SD/ELL students, that is, a student with disabilities and also identified as English Language Learners (ELL) by use of the home language survey and the ACCESS English proficiency assessment according to the Delaware and U.S. Department of Education definitions.

What is an English Language Learner?

An English Language Learner is a student who:

- was either born in the United States or outside the United States and whose native language is a language other than English and comes from an environment where a language other than English is dominant OR
- is a Native American, or Alaska Native, or a native resident of the outlying areas and comes from an environment where a language other than English has had a significant impact on such individual's level of English proficiency OR
- is migratory and whose native language is other than English and comes from an environment where a language other than English is dominant AND
- has sufficient difficulty speaking, reading, writing, or understanding the English Language, that may interfere with the student's opportunity to learn successfully in classrooms where the language of instruction is English, or to participate fully in society. Criteria for determining ELL status is found on page 26.

Monitoring the Implementation of Guidelines for Inclusion

The implementation of the *Guidelines* for students with disabilities is monitored by the Delaware Department of Education as part of efforts to oversee the implementation of the Individuals with Disabilities Education Act (IDEA 2004).

The implementation of the *Guidelines* for English Language Learners is monitored by the Delaware Department of Education Program Specialist for ESL/Bilingual and Migrant Programs for Title III of the Elementary and Secondary Education Act.

For More Information:

The following Delaware Department of Education staff members are available to answer questions about these Guidelines:

Questions about the Delaware Student Testing Program: Dr. Wendy Roberts.

Telephone: 302-735-4090. E-mail: wroberts@doe.k12.de.us.

Questions about students with disabilities and about these guidelines relating to students with disabilities: Brian Touchette. Telephone: 302-735-4210. E-mail:

btouchette@doe.k12.de.us.

Questions about entering accommodations in DELSIS for Student with Disabilities: Lisa Marcum. Telephone: 302-735-4210. E-mail: lmarcum@doe.k12.de.us .

Questions about English Language Learners and about these guidelines relating to ELL students: Margaret M. Loveland. Telephone: 302-735-4260. E-mail:

mloveland@doe.k12.de.us.

Questions about entering accommodations in DELSIS for English Language Learners:

Fran Kellam. Telephone: 302-735-4260. E-mail: fkellam@doe.k12.de.us.



Changes and Clarifications

Please destroy the 2006-2007 Guidelines for Inclusion. This document replaces it.

Parent Withdrawals from English as a Second Language (ESL) or Bilingual Services

Some students are evaluated and have received ESL or bilingual services, but are withdrawn from these services by their parent or guardian. This means that although these students qualify for ESL or bilingual services, the parent or guardian chooses not to have the students continue to receive ESL or bilingual services.

If a student has been evaluated and has been found to qualify for ESL or bilingual services, but the parent or guardian withdraws the student from services, the student may still receive testing accommodations, including (but not limited to) accommodation 96 (exemption from science and social studies DSTP) and accommodation 98 (exemption from the reading and writing DSTP).

The decisions regarding which accommodations should be given to a student should be made on an individual basis using the information in these Guidelines for Inclusion.

Scribing Protocol for American Sign Language

A separate scribing protocol has been included for students who have the DSTP presented in American Sign Language (Appendix A).

“Special Flexibility” for ELLs is Now Called “Exemption” for ELLs

What was formerly called Special Flexibility on the Reading and Writing DSTP for ELLs is now called Exemption for ELLs.

Exemptions from Reading and Writing DSTP for ELLs

ELL students who have been **enrolled in US schools** for less than one year may be exempt from the Reading and Writing DSTP. However, they may not be exempt from the Mathematics DSTP. See pages 32-33 regarding Exemptions for ELLs.

Exemptions from Science and Social Studies DSTP for ELLs

ELL students who have been enrolled in DE schools for less than one year may be exempt from the Science and Social Studies DSTP. See pages 32-33 regarding Exemptions for ELLs.

Computer Accommodations:

When a student is using a word processing program or any accommodation that requires a computer, it is **strongly recommended** that the computer's access to the internet be disabled.

Aggregable Scores and Non-Aggregable Scores in Accountability

Both aggregable and non-aggregable scores are included in student, school, and district accountability. Below, Table 1 summarizes the inclusion of scores in the two types of calculations.

An aggregable score results when a student takes the DSTP under standard conditions (without accommodations), or with an accommodation that does not change the test construct. Students who have accommodations that produce aggregable scores and scores of students who took the DSTP under regular conditions (with no accommodations) will have those scores included in the calculations of summary statistics published in the *State Summary Report* and the public side of the DSTP-Online Reports website. Students receive an individual score report, regardless of the type of accommodation they receive.

A non-aggregable score results when an accommodation changes the test construct (what the test is measuring) or modifies the test in such a way that the score cannot be directly compared to scores of students testing under standard conditions (i.e., under testing conditions 1 and 2). The non-aggregable scores are not reported in the State Summary Report with scores of students taking the DSTP under standard conditions. Students receive an individual score report.

Table 1. Inclusion of Scores in Reports

	Report Type	
Type of Score	State Summary Report	Accountability Ratings
Aggregable Score	Included in calculations	Included in calculations
Non-Aggregable Score	Not Included in calculations	Included in calculations



Section I: Students with Disabilities

This section will guide Delaware educators through the decision-making process for participation in the DSTP for

- students with disabilities; and
- students who are dually eligible as a student with a disability and as an English Language Learner (SD/ELL).

Use of *Student With Disabilities* Form

The *Student With Disabilities* form is not intended to replace the “Accommodations and Modifications, Supports, and Services” section of the Individualized Education Program (IEP).

Accommodation, Participation and Exemption Decisions

All students with disabilities (SD) students in grades 2 through 11 will participate in the DSTP unless included in the DAPA using the criteria outlined on pages 19 and 20. SD/ELL students in grades 2 through 11 will participate in the DSTP unless they are included in the DAPA or they are granted an ELL exemption.

Students who are both SD and ELL (SD/ELL) may receive exemptions for the DSTP reading and writing tests using the criteria on pages 21-22. Students who are both SD and ELL (SD/ELL) may be exempted from the DSTP social studies tests (grades 4, 6, 8, and 11) by using the criteria on pages 21. Recently arrived ELL students may not be exempt from mathematics. However, their math scores will not be included in school or district accountability calculations.

Students may receive accommodations on the DSTP only if they:

- are eligible for services under IDEA or Section 504 and
- have an IEP or 504 plan and instructional program that includes accommodations and/or assistive devices in the instructional process.

These students are eligible for the same test accommodations that are in their IEP or 504 plan. Students who have been formally identified through the IDEA or 504 process

but do not have accommodations or assistive devices documented in their plans are not eligible for any accommodations during the Delaware Student Testing Program.

The chart on page 14 summarizes decision-making steps for determining the testing condition under which a student will be assessed.

Absence, suspension, expulsion, transfer, illness, and withdrawal are treated in the same way for all students. These situations are not addressed by the *Guidelines for Inclusion*. Students in temporary placements such as the Delaware Adolescent Program, Inc. (DAPI) should be tested using standard conditions or accommodations as documented in the IEP or 504 plan.

The Department of Education expects that a student's accommodations on the *Student With Disabilities* form will be provided, offered, and available on the days of testing.

Testing Conditions

Students with disabilities may test under the following conditions:

- standard conditions;
- with accommodations that permit aggregation of test scores;
- with accommodations that do not permit aggregation of test scores;
- participate in the DAPA;
- be exempted from the social studies test (grades 4, 6, 8, 11) if the student is an SD/ELL student and meets the criteria specified in this document;
- receive an exemption from the reading and writing tests (grades 2-10) if the student is an SD/ELL student and meets the criteria specified in this document;

Testing Condition 1: Students may be tested under regular conditions. Note that students may elect to test under regular conditions even if accommodations are being used in the classroom.

Testing Condition 2: Students may test with accommodations that do not change the construct being assessed. Such accommodations do not interfere with the comparability of student scores to the scores of students testing under standard conditions.

The scores for students testing with these accommodations are aggregable (will be included) in the calculations of the results presented in the State Summary. Students will receive an individual score report.

Testing Condition 3: Students may test with accommodations that change the construct being assessed (for example, reading aloud the reading passages in the reading comprehension test – accommodation #46). Such accommodations interfere with the comparability of student scores to the scores of students testing under standard conditions (i.e., testing conditions 1 and 2).

The scores for students testing with these accommodations are non-aggregable and will not be included (not aggregated) in the calculations of the results presented in the State Summary Report; however, students will receive an individual score report.

Testing Condition 4: Students with disabilities may participate in the Delaware Alternate Portfolio Assessment (DAPA) if they meet the criteria on pages 19 and 20. The scores for students testing with this assessment are aggregable (will be included) in the calculations of the DAPA results presented in the State Summary. Students will receive an individual score report.

Testing Condition 5: The grade 4, 6, 8, or 11 SD/ELL student may be exempted from the science and social studies tests if he or she meets the criteria outlined on pages 21. Students who are both SD and ELL (SD/ELL) in grades 2-10 may receive exemption from the DSTP reading and writing tests using the criteria on pages 22.

Testing Condition 2: Accommodations That Permit Aggregation of Test Scores

Reporting

The accommodations in testing condition 2 do not change the construct(s) of the tests, therefore, the test scores are comparable to scores earned by students who are tested under standard conditions (testing condition 1). Scores of students testing with these accommodations are included in the calculation (aggregation) of test results presented in the State Summary Report.

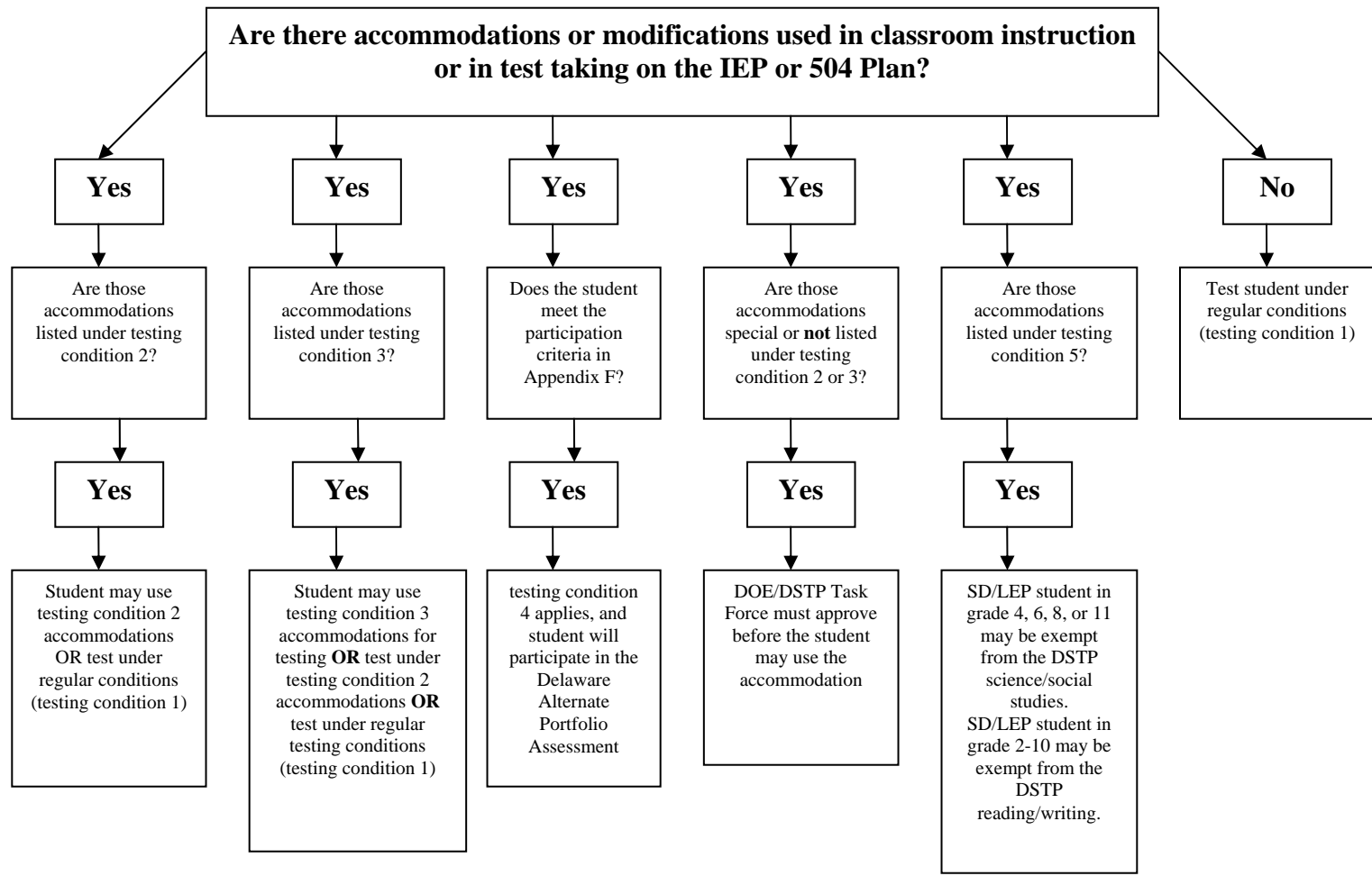
If multiple accommodations have been documented in the student's IEP or 504 plan, the student may test with multiple accommodations. Accommodations may differ for a single student depending on the content of the test (e.g., reading, writing, mathematics, science, social studies).

Staff may not provide additional clues or interpretations during the test beyond the allowable accommodations in this section. Such additional help will invalidate the comparability of the student's score with scores of students who tested under standard conditions.

Likewise, teachers giving the test to students under standard testing conditions (testing condition 1) may not give additional clues or interpretations during the test beyond the administration directions.

Figure 1. Decision Rules for Testing Conditions: Students with Disabilities

Reading, Writing, Mathematics, Science and Social Studies



The following accommodations are permitted under testing condition 2 to produce aggregated scores.

Accommodations for the Presentation or Reception of the Test

01. Presenting the test in Grade 1 and/or Grade 2 Braille.
02. Presenting the test in larger print (18 point).
03. Enhancing lighting.
04. Using visual magnification devices.
05. Reading, re-reading or providing signed assistance of test questions (including the multiple-choice options), and writing prompts. Reading includes presenting material on audiotape or videotape. Signed assistance includes using a sign language interpreter, oral interpreter, cued speech interpreter or transliterator. Indicate with a \checkmark _____ all allowable items OR \checkmark _____ items requested by student. Simplifying language is not allowed.
06. Using an assistive listening device, such as an auditory trainer, or a classroom or personal amplification system.
07. Providing special acoustics, such as buffers.
08. Providing signed assistance for directions. Signed assistance includes sign language interpreter, oral interpreter, cued speech interpreter or transliterator.
09. Presenting instructions and test questions (including multiple-choice options) via an overhead projector and transparencies. (Transparencies must be shredded after testing is complete.)
10. Chunking or highlighting information in passages in a standardized format for students who use American Sign Language.
30. In mathematics, social studies, and science, presenting the test via Kurzweil software. The District Test Coordinator will be notified about which grade levels and content areas may be available for the 2007-2008 test administrations. Must also select #5. See accommodation #31 for presenting the reading test via Kurzweil.

Accommodations for Interaction or Processing During the Test

11. Using preferential seating, for example, seating the student close to the test administrator.
12. For written responses, student uses an audio recorder as an organizational or pre-writing tool. Student must be tested individually.
13. For written responses, deaf student records a videotape as an organizational or pre-writing tool. Student must be tested individually.
15. Administering the test individually.
16. Administering the test in a small group.

17. Re-presenting (rereading or resigning) directions for each subtest anytime during the test.
18. Refocusing attention to the test with use of intermittent verbal, picture symbol, signed, cued speech or physical prompts.
19. Using physical assistance from a test administrator. Examples include direct assistance with turning pages or with navigating in electronic format.
20. Providing adaptive or special furniture or equipment to accommodate a physical disability.
21. For the writing test, using an electronic dictionary or thesaurus whenever a dictionary or thesaurus use is permitted for other students. Teacher may be used as a resource for spelling whenever dictionary or thesaurus use is permitted.
47. ** Using a calculator on the two parts of the mathematics test for which calculators are not permitted.
48. Using an abacus, cubes and other like manipulatives. Also, using three-dimensional representations of pictures in the test such as supplying real coins when a picture of coins is presented.
49. Using arithmetic tables. (This includes whole numbers, addition, subtraction, and multiplication and division)
50. Using templates, graph paper, acetate color sheets, or other markers, if they are not part of the regular testing conditions.

Accommodations for Student Responses

54. Completing the test over multiple sessions. Testing can stop at any point (mid-session if necessary) and, if necessary, be completed over several days.
- 14.* For written responses on all tests except reading and writing, use of supportive software and/or software features in combination with word processing, such as word prediction, grammar/spell check, outlining and auditory feedback/text to speech. Accommodation #26 must also be selected.
- 60.* Use for the reading and writing tests. For written responses, using supportive software and/or software features in combination with word processing, such as word prediction, grammar/spell check, outlining and auditory feedback/text to speech. Accommodation #26 must also be selected.

26. For written responses, using individualized written communication system for word processing. Systems include Braille device, computer, AlphaSmart, adapted keyboard, voice recognition, or augmentative alternative communication (AAC) device. **It is strongly recommended that the computer's access to the internet be disabled. Monitor students to be sure they are using only the word processing software.**
- * Any audio or computer files generated must be deleted immediately after administration of the test.
- ** DSTP score will not be aggregated; SAT10 score will be aggregated, SAT9 score will not be aggregated.
27. For written responses on all tests except reading and writing, student dictates to a test administrator following the scribing protocol (see Appendix A). Student responses can be signed or verbal and can be recorded by audio or video taping. Use for all tests except reading and writing.
28. For written responses on reading and writing test, student dictates to a test administrator following the scribing protocol (see Appendix A). Responses can be signed or verbal and can be recorded by audio or video taping.
29. Student records responses to multiple-choice items directly in test booklet or dictates responses to a test administrator. Test administrator must transcribe responses into response booklet.

Testing Condition 3: Accommodations that Produce Non-Aggregated Scores

Reporting

The accommodations in testing condition 3 change the construct(s) of the test, therefore, the test scores are not comparable to scores earned by students who are tested under testing conditions 1 and 2. Scores of students testing with these accommodations will not be included in the calculation (aggregation) of test results presented in the State Summary Report.

Students will receive an individual score report. Schools and districts receive credit for these student's scores as earned in the accountability system.

Testing Condition 3 Accommodations

If multiple accommodations have been documented in the student's IEP or 504 plan, the student may test with multiple accommodations. Note that test administrators may not provide additional clues or interpretations during the test beyond the allowable accommodations in this section.

Accommodations for Interaction or Processing During the Test

46. † Reading or signing passages or texts for the reading test or text-based writing (or using cued speech or oral interpreter). Indicate with a ___ all allowable items OR ___ items requested by student.

To enter accommodation 46 in DELSIS for a student, the three questions at the top of the next page must first be answered. It is not necessary to answer "Yes" to all three in order to use this accommodation.

- a. Does the student have an identified disability that affects reading (decoding skills)? yes no
- b. Does the student have an IEP goal/objective to address deficits in decoding? yes no
- c. Does the student have a motor, sensory, or visual impairment that requires the use of this accommodation? yes no
31. † Presenting the reading test directions, questions, multiple-choice options, and reading passages via Kurzweil Software. Must also select #5 and #46.
- † SAT-10 score will not be aggregated. DSTP score will not be aggregated.

Unique Accommodations

61. Unique accommodations specific to the individual student as determined by the IEP team and approved by the DOE/DSTP Task Force. The status (aggregation/non-aggregation) of the accommodation will be decided by the Task Force.

Requesting Unique Accommodations

Permission to administer a test under Unique Accommodations must be requested via the Online System for Exemption Requests, Incident Reports, and Unique Accommodations (see Appendix B). The Unique Accommodation request must be submitted to DOE by the District Test Coordinator no later than the month prior to the month in which the student is tested: The respective due dates are listed in the table below.

Test Administration	Deadline for submission of Unique Accommodations Requests
Sumer Re-Test 2007	June 17, 2007
October 2007	September 20, 2007
March 2008	February 9, 2008
May 2008	April 25, 2008
Summer Re-test 2008	June 17, 2008

Testing Condition 4: Participation in the Delaware Alternate Portfolio Assessment (DAPA)

Under testing condition 4, students may be included in DAPA. The student's IEP team must evaluate the possible inclusion of the student in each of the five parts of the DSTP: reading, writing, mathematics, science, and/or social studies.

Participation

To include the student in the DAPA, the student's IEP team must complete all of the following steps. If it is determined that there is sufficient information to support ALL of the criteria below, the IEP team should document this decision on the student's current IEP and sign the *Participation Guidelines* (see Appendix F). Students who do not meet all of the criteria will participate in the DSTP, with or without accommodations. The achievement of students in the DAPA is based on alternate achievement standards. Alternate achievement standards allow the use of a different scoring system. Students who participate in the DAPA are working on the same academic standards as their peers; however, they are working on these standards in less complex ways.

The signed *Participation Guidelines* must be submitted with the DAPA on the designated due date.

Documentation

The IEP team must clearly document in the student's IEP the basis for its decision. School staff must support the inclusion decision by using current and longitudinal data, such as:

- performance data across multiple settings in the areas of academics, communication, cognition, social competence, recreation or leisure, domestic community living, and vocational skills.
- behavioral observations in multiple settings.
- adaptive behavior.
- continuous assessment of progress on IEP goals and objectives.

Such documentation will verify that the student meets the criteria listed below.

Criteria

The following are the participation guidelines for inclusion in the Delaware Alternate Portfolio Assessment (DAPA). The student's record must have sufficient data to support all of the following:

Criterion #1: Evidence of Significant Cognitive Disabilities

Student's levels of cognitive skills and adaptive behavior are such that extensive modifications are required in order to access the general curriculum.

Criterion #2: Intensity of Instruction

Student requires extensive direct instruction and/or extensive supports to accomplish the application and transfer of skills to school, home, work, and community environments.

Criterion #3: Curricular Outcomes

The student requires extensively modified instruction focusing on a less complex application of skills in order to access the Delaware Content Standards.

Criterion #4: Exclusions

The decision to include the student in the DAPA is NOT based on the following:

1. existence of an IEP;
2. specific categorical label;
3. educational placement;
4. English language learner status;
5. socio-economic or cultural differences;
6. excessive or extended absences;
7. disruptive behavior;
8. student's reading level; or
9. the expectation that the student will not perform well on the DSTP.

Participation in DAPA

64. The student meets the criteria on the *Delaware Alternate Portfolio Assessment Participation Guidelines* (Appendix F) and will participate in the DAPA.

Testing Condition 5: Exemption of SD/ELL Students from the DSTP

Documentation and Criteria

The IEP team must support the individual student's exemption decision by documenting ALL of the following:

- Home Language Survey or questions on the registration form; AND
- The English proficiency assessment, Assessing Comprehension and Communication in English State-to-State (ACCESS).

One or more of the following reasons should be included in the documentation of the justification:

- Lack of formal education
- Excessive absenteeism
- Interrupted education
- Transient student
- Other assessment or extenuating circumstances (fully describe)

Exemption from the DSTP Science and Social Studies Assessments

Students who are dually eligible as students with disabilities and English Language Learner (SD/ELL) may be granted an exemption from all or part of the science and social studies assessments if and only if both of the following criteria are met:

- The student has been enrolled in Delaware public schools for less than one year;
- the decision to exempt is made on an individual basis weighing the factors outlined in these *Inclusion Guidelines*.

An SD/ELL student is considered to have been enrolled in Delaware public schools for less than one year under one of the following conditions:

- For grades 8 and 11 May testing: The student first enrolled in U.S. schools between June 1, 2006 and May 31, 2007.
- For grades 4 and 6 October testing: The student first enrolled in U.S. schools between November 1, 2006 and October 31, 2007.
- The student is enrolled in a public school in Delaware, leaves the state for more than 90 calendar days (the days between June 9 and August 28 do not count as part of the 90 days), returns to the state, and the returning date of enrollment in Delaware public schools is less than one year from the date of the first DSTP test administered in the school. (Note: when student re-enters after the 90 day break, he/she will need to be retested for English language proficiency).

Exemptions from the Science and Social Studies Tests

96. (On the *English Language Learner* form) Exempted from the science and social studies tests (grades 4, 6, 8, and 11) if in DE schools less than one year.

Exemption from the DSTP Reading and Writing Assessments

An SD/ELL student may be considered from exemption from the DSTP reading and writing tests if:

- the student is in the first year of enrollment in U.S. schools; AND

- the decision to grant an exemption is made on an individual basis weighing the factors outlined in these *Inclusion Guidelines*.

An ELL student is considered to be in the first year of enrollment in U.S. schools for less than one year under the following condition:

- The student is new to the United States AND is in the first year of enrollment in U.S. schools, AND the student first enrolled in U.S. schools between April 1, 2007 and March 31, 2008.

Exemption from the Reading and Writing Tests

98. (On the *English Language Learner* form) Student is exempt from the reading and writing tests (students in grades 2-10 enrolled in U.S. schools less than one year).

Student with Disabilities Form (side 1)

Use this form for IEP Meetings and 504 Plan Meetings between May 1, 2007 and April 30, 2008
Documentation of Allowable Accommodations for Individual Student for Assessment

State ID: _____ Last Name: _____ First Name: _____ Date of Birth: _____

District Code: _____ School Code: _____ Date: _____ Special Education Section 504

Soc. Studies	Science	Math	Writing	Reading		
Accommodations for the Presentation or Reception of the Test						
					01	Presenting the test in Grade 1 and/or Grade 2 Braille.
					02	Presenting the test in larger print (18 point).
					03	Enhancing lighting.
					04	Using visual magnification devices.
					05	Reading, re-reading or providing signed assistance of test questions, multiple-choice options and writing prompts. Reading includes presenting material on audiotape or videotape. Signed assistance includes using a sign language interpreter, oral interpreter, cued speech interpreter or transliterator. Indicate with a ✓ ___ all allowable items OR ✓ ___ items requested by student. (Simplifying language is not allowed)
					06	Using Assistive Listening Device, such as auditory trainer, classroom or personal amplification systems.
					07	Providing special acoustics, such as buffers.
					08	Providing signed assistance for directions. Signed assistance includes sign language interpreter, oral interpreter, cued speech interpreter or transliterator.
					09	Presenting instructions, test questions, and multiple-choice options via an overhead projector and transparencies.
					10	Chunking or highlighting information in passages in a standardized format for students who use American Sign Language.
					30	Presenting the test directions and questions (including multiple-choice options) via Kurzweil software. (See Accommodation #31 For presenting the reading test via Kurzweil software.) <u>Must also select accommodation #5.</u>
Accommodations for Interaction or Processing During the Test						
					11	Using preferential seating such as arranging the seat close to the test administrator.
					12	For written responses, student uses an audio recorder as an organizational or prewriting tool. Student must be tested individually.
					13	For written responses, deaf student records a videotape as an organizational or prewriting tool. Student must be tested individually.
					15	Administering the test individually.
					16	Administering the test in a small group.
					17	Re-presenting (rereading or resigning) directions for each subtest anytime during the test.
					18	Refocusing attention to test with use of intermittent verbal, picture symbol, signed, cued speech or physical prompts.
					19	Using physical assistance from a test administrator such as direct assistance with turning pages or navigating in electronic format.
					20	Providing adaptive or special furniture or equipment to accommodate a physical disability.
					21	For the writing test, using an electronic dictionary or thesaurus. Teacher may be used as a resource for spelling whenever dictionary or thesaurus use is permitted.
					47	** Using a calculator on the two parts of the mathematics test for which calculators are not permitted.
					48	Using an abacus, cubes, and other like manipulatives. Also, using three-dimensional representations of pictures in the test such as supplying real coins when a picture of coins is presented.
					49	Using arithmetic tables. (This includes whole numbers, addition, subtraction, multiplication and division)
					50	Using templates, graph paper, acetate color sheets, or other markers, if they are not part of the regular testing conditions.

Student with Disabilities Form (side 2)

Use this form for IEP Meetings and 504 Plan Meetings between May 1, 2007 and April 30, 2008

Soc. Studies Science Math Writing Reading

Accommodations for Student Responses

					54	Completing the test over multiple sessions. Testing can stop at any point (mid session if necessary) and if necessary, be completed over several days.
					14	* For written responses, use of supportive software and/or software features in combination with word processing, such as word prediction, grammar/spell check, outlining, and auditory feedback/text to speech. Accommodation #26 must also be selected. Use for all tests except reading and writing.
					60	* For written responses, using supportive software and/or software features in combination with word processing, such as word prediction, grammar/spell check, outlining and auditory feedback/text to speech. Accommodation #26 must also be selected. Use for the reading and writing tests.
					26	For written responses, using individualized written communication system for word processing. Systems include Braille device, computer, AlphaSmart, adapted keyboard, voice recognition, AAC device. We strongly recommend disabling internet access.
					27	For written responses, student dictates to a test administrator following the scribing protocol. Responses can be signed or verbal and can be recorded by audio or video taping. Use for all tests except reading and writing. (Scribing protocol is in Appendix A)
					28	For written responses, student dictates to a test administrator following the scribing protocol. Responses can be signed or verbal and can be recorded by audio or video taping. Use for reading and writing tests. (Scribing protocol is in Appendix A)
					29	Records responses to multiple-choice questions directly in test booklet or dictates responses to a test administrator. Test administrator must transcribe responses into response booklet.

Accommodations for Interaction or Processing During the Test

					46	† Reading or signing passages or texts for the reading test or text-based writing (or using cued speech or oral interpreter). Indicate with a ✓ ___ all allowable items OR ✓ ___ items requested by student. Does the student have an identified disability that affects reading (decoding skills)? ___ yes ___ no Does the student have an IEP goal/objective to address deficits in decoding? ___ yes ___ no Does the student have a motor, sensory, or visual impairment that requires the use of this accommodation? ___ yes ___ no
					31	† Presenting the test directions, questions (including multiple-choice options) and reading passages via Kurzweil Software. Must also select #46 and #5.

Unique Accommodations

					61	Unique accommodations specific to the individual student as determined by the IEP team and approved by the DSTP Task Force. The status (aggregation/non-aggregation) of the accommodation will be decided by the Task Force. The request must be made via the online system for requesting unique accommodations (directions and a worksheet are in Appendix B).
--	--	--	--	--	----	--

Participation in DAPA

					64	The student meets the criteria in the <i>Delaware Alternate Portfolio Assessment Participation Guidelines</i> and will participate in the DAPA.
--	--	--	--	--	----	---

					63	No accommodations.
--	--	--	--	--	----	--------------------

* Any computer files generated must be deleted immediately after the test administration is complete.
 ** The DSTP score will not be aggregated; the SAT-10 score will be aggregated; the SAT9 score will not be aggregated.
 † The DSTP will be non-aggregated and the SAT-10 score will be non-aggregated.



Section II: English Language Learners (ELLs)

This section will guide Delaware educators through the decision-making process for participation in the DSTP for language minority students who are

- English Language Learners (ELL); or
- dually eligible as a student with a disability and an English Language Learner (SD/ELL).

Eligibility

Students are eligible to test with accommodations on all or part of the DSTP, or be exempted from individual tests only if they have been formally identified as English language learners by using the criteria in these *Guidelines* (see page 26). The *English Language Learner Accommodations* form (page 35-36) must be completed and entered into DELSIS, and a copy placed in the student, district or school file prior to the administration of the DSTP.

Students who have not been formally identified as ELL using these *Guidelines* and/or do not have an *English Language Learner Accommodations* form in DELSIS and/or in the student, district, or school file prior to the administration of the DSTP are not eligible for any accommodations during the DSTP administration. The criteria in Figure 2 on pages 31 give guidance on the steps in the decision to provide testing condition 1, 2, 3, 5, or 6 of the DSTP. The testing conditions are defined on pages 27-28 of these *Guidelines*.

Parent Withdrawals from English as a Second Language (ESL) or Bilingual Services

Some students are evaluated and have received ESL or bilingual services, but are withdrawn from these services by their parent or guardian. This means that although these students qualify for ESL or bilingual services, the parent or guardian chooses not to have the students continue to receive ESL or bilingual services.

If a student has been evaluated and has been found to qualify for ESL or bilingual services, but the parent or guardian withdraws the student from services, the student may still receive testing accommodations, including (but not limited to) accommodation

#96 (exemption from science and social studies DSTP) and accommodation #98 (exemption from the reading and writing DSTP).

The decisions regarding which accommodations should be given to a student should be made on an individual basis using the information in these Guidelines for Inclusion.

Criteria for Identifying the ELL Student

The criteria for identifying an ELL student are as follows:

Home language survey:

The home language survey must be administered to all new students in the Delaware schools. Each district has a question on their student enrollment form asking if another language other than English is spoken in the home or by the student. If the answer is “yes,” the student may be an ELL. The next step is to test the student using the English proficiency test, ACCESS (Assessing Comprehension and Communication in English State to State) test of English language proficiency.

ACCESS (Assessing Comprehension and Communication in English State to State):

The ACCESS test (reading, writing, listening, and speaking) is administered to students identified using the Home Language Survey.

ACCESS performance levels are as follows:

Level 1—Entering

Level 2—Beginning

Level 3—Developing

Level 4—Expanding

Level 5—Bridging

Accommodation, Participation, and Exemption Decisions

All formally identified ELL students in grades 2-10 will participate in the DSTP reading and writing, an alternate assessment for ELL students (if available), or receive an exemption from the reading and writing if they meet the criteria for an exemption on pages 32-33. Students who receive an exemption are not required to take the reading and writing DSTP. All ELL students in grades 2-10 will participate in the DSTP mathematics test. ELL students in grades 4, 6, 8, and 11 may be exempted from the DSTP science and social studies tests if they meet the necessary criteria on pages 31.

Absence, suspension, expulsion, transfer, illness, and withdrawal are treated in the same way for all students. These situations are not addressed by the *Guidelines for Inclusion*. Students in temporary placements such as the Delaware Adolescent Program, Incorporated (DAPI) should be tested under standard conditions or with accommodations if documented in the IEP or 504 plan.

The Department of Education expects that a student's accommodations on the *English Language Learner* accommodations form will be provided, offered, and available on the days of testing.

For ELLs an accommodation may be introduced for the first time in the DSTP testing situation if the accommodation is not completely unfamiliar to the student. For example, the accommodation of using a bilingual dictionary would not be appropriate if the student has not been taught how to use one.

Testing Conditions

Students may test under the following conditions:

1. standard conditions;
2. with accommodations that permit aggregation of test scores;
3. with accommodations that do not permit aggregation of test scores;
4. participate in the DAPA;
5. be exempted from the science and social studies tests (grades 4, 6, 8, 11);
6. be granted an exemption from the reading and writing tests (grades 2-10);
7. be administered an alternate assessment for ELL students (if available), in place of DSTP reading and DSTP writing.

Testing Condition 1: Students may be tested under regular conditions. Note that students may be tested under regular conditions even if accommodations are being used in the classroom.

Testing Condition 2: Students may test with accommodations that do not change the construct being assessed. Such accommodations do not interfere with the comparability of student scores to the scores of students testing under standard conditions.

The scores for students testing with these accommodations are aggregable and will be included (be aggregated) in the calculations of the results presented in the State Summary Report. Students will receive an individual score report.

Testing Condition 3: Students may test with accommodations that change the construct being assessed (for example, #84, translating the reading passages into student's native language). Such accommodations interfere with the comparability of student scores to the scores of students testing under standard conditions (i.e., testing conditions 1 and 2).

The scores for students testing under testing condition 3 are non-aggregable and will not be included (not aggregated) in the calculations of the results presented in the State Summary Report; however, students will receive an individual score report.

Testing Condition 4: Students with disabilities and SD/ELL students may participate in the Delaware Alternate Portfolio Assessment (DAPA) if they meet the criteria on pages 20-21.

Testing Condition 5: The ELL student may be exempted from the science and social studies tests if he or she meets the criteria outlined on page 32. The ELL student may receive an exemption from the reading and writing tests if he or she meets the criteria outlined on pages 32-33. Students receiving an exemption are not required to take the DSTP reading and writing tests. Any exemptions must be entered into DELSIS.

Testing Condition 2: Accommodations that Permit Aggregation of Test Scores

Test administrators may not provide additional clues or interpretations during the test beyond the testing condition 2 accommodations listed in this section.

Test administrators administering the test under regular testing conditions (testing condition 1) may not give additional clues or interpretations during the test beyond the standard administration directions.

Accommodations for Interaction or Processing During the Test

The following accommodations are permitted under testing condition 2:

66. Administering the test to the student individually in a separate location.
67. Administering the test in a small group in a separate location.
94. Reading, re-reading, in ENGLISH, the test directions, questions, and multiple-choice options for Mathematics, Science, and Social Studies ONLY. Indicate with a ✓ _____ all allowable items **OR** ✓ _____ items requested by student. **(If you would like to simplify or paraphrase, choose #82 also.)**
68. Using an electronic or written bilingual dictionary for test. Electronic dictionaries must provide only a word-for-word translation. (This accommodation may **not** be used during the reading test).
78. In a small group or individually, administering two side-by-side tests at the same time, one version in Spanish and the second in English (not available for the reading and writing tests). It is **recommended** that the interpreter/test administrator be proficient in Spanish. Students who use the Spanish translation of the mathematics test also receive a translation of all support materials, including the revision and editing checklist, the pre-writing sheets, and mathematics-reference sheets. (DSTP score will be aggregated, SAT-10 score will NOT be aggregated.) **(If you choose #78 for a content area, you cannot choose #79 for that content area.)**
79. Administering the entire test in Spanish. Students who use the Spanish translation of the mathematics test also receive a translation of all support materials, including the revision and editing checklist, the pre-writing sheets, and mathematics-reference sheets. Interpreter/test administrator **must** be proficient in the native language. (DSTP score will be aggregated, SAT-10 score will NOT be aggregated.) **(If you choose #79 for a content area, you cannot choose #78 for that content area.)**

85. In a small group or individually, using an interpreter to translate directions, prompts, and/or test questions (including multiple-choice options). Passages on the reading test or the text-based writing CANNOT be translated unless student also has accommodation 84. Interpreter/test administrator **must** be proficient in the native language.
86. Giving extra breaks.
87. Completing the test over multiple blocks of time. Testing can be continued on a subsequent day. NOTE: If testing is to be continued on a subsequent day, the break must occur between test sessions. No test session will be started unless it can be finished before the end of the school day. Instead, that session will be continued on a subsequent day.

Accommodations for Student Responses

76. Student responds to the test by writing responses in Spanish.
102. For written responses, student dictates to a test administrator in ENGLISH, following the scribing protocol.
90. During the writing test (includes text-based writing), student uses native language to write the first draft.

Testing Condition 3: Accommodations that Produce Non-Aggregable Test Scores

All accommodations given under testing condition 3 produce student scores that cannot be aggregated. That is, the scores from students with testing condition 3 accommodations are not comparable to the scores of students who tested under testing condition 1 (no accommodations) or testing condition 2 accommodations. Testing condition 3 accommodations change the nature of the construct measured by the test.

Reporting

The accommodations provided in this section will not be included in the calculation of school, district and state averages published in DSTP-Online Reports, or in the State Summary of DSTP Results.

The accommodations should be entered into DELSIS as soon as possible after a new student enrolls, or when a change in the accommodation of a current student is made, or on or before the due date for the October, March, May, or July testing periods, whichever comes first.

Accommodations Permitted

82. Simplifying or paraphrasing test directions or items (including multiple-choice options) in English or native language. Interpreter/test administrator **must** be proficient in the native language. SAT10 score and DSTP score are both non-aggregable.

- 83. On the SAT-9 or SAT-10 mathematics portions of the test, interpreter translates questions and multiple-choice options into student’s native language. Interpreter/test administrator **must** be proficient in the native language. **(Use for languages other than Spanish. Use for Spanish during summer re-test in grades 3, 5, and 8.)** SAT9 or SAT10 score is non-aggregable.
- 84. In a small group or individually, using an interpreter to translate the reading passages in the reading test or the text-based writing into student’s native language. Interpreter/test administrator must be proficient in the native language. SAT10 score and DSTP score are both non-aggregable.

Unique Accommodations

- 91. Unique accommodations specific to the individual student as determined by the instructional team and approved by the DOE. The status (aggregation/non-aggregation) of the accommodation will be decided by DOE. Accommodation 91 may also be used to apply for an exemption from Science and Social Studies when student has been in DE schools for more than one year.

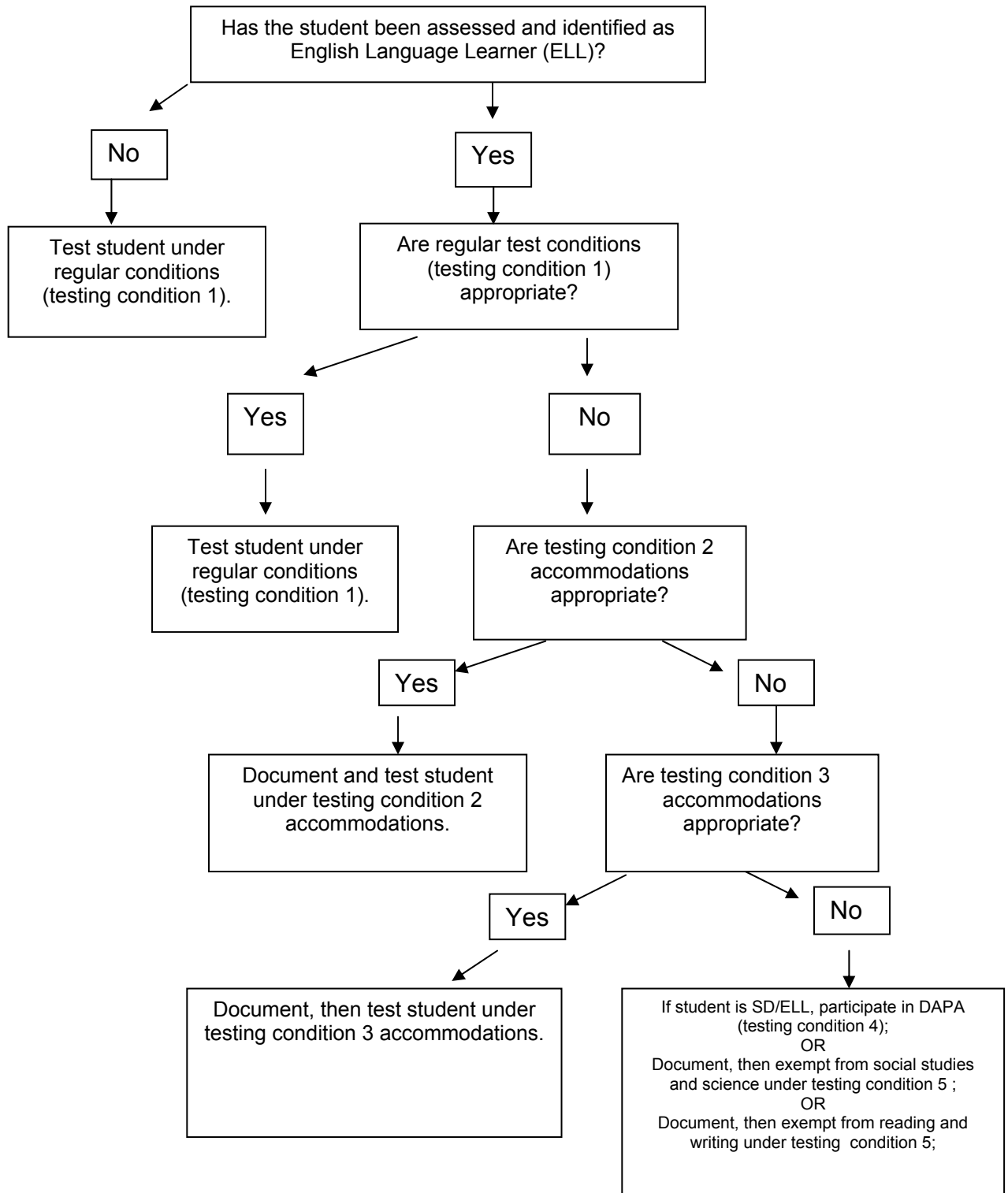
Requesting Unique Accommodations

Unique accommodations are specific to the individual student as determined by the appropriate school staff and the status approved by the DOE/DSTP Review Committee.

A request for a unique accommodation must be submitted by the school test coordinator via the Online System for Incidents, Exemptions, and Unique Accommodations (#91) (see **Appendix B**). The Unique Accommodation request must be submitted to DOE by the District Test Coordinator no later than the month prior to the month in which the student is tested: The respective due dates are listed in the table below.

Test Administration	Deadline for submission of Unique Accommodations Requests
Summer Re-test 2006	June 17, 2007
October 2006	September 20, 2007
March 2007	February 9, 2008
May 2007	April 25, 2008
Summer Re-test 2007	June 17, 2008

Figure 2. Decisions for Testing Conditions: ELL Students



Testing Condition 5: Exemption of ELL Students from the DSTP

ELL students in grades 2-10 may receive an exemption from the DSTP reading and writing if they meet the criteria. If a student receives an exemption, he or she is not required to take the reading and writing DSTP.

ELL students in grades 4, 6, 8, and 11 may receive an exemption from the science and social studies tests if they meet the criteria.

Criteria for Receiving an Exemption from the Science and Social Studies Tests

The following are the criteria for receiving an exemption from the science and social studies tests:

- The student has been enrolled in Delaware public schools for less than one year; AND
- The decision to exempt is made on an individual basis weighing the factors outlined in these *Inclusion Guidelines*.

An ELL student is considered to have been enrolled in Delaware public schools for less than one year under one of the following conditions:

- For grades 8 and 11 May testing: The student first enrolled in U.S. schools between June 1, 2006 and May 31, 2007.
- For grades 4 and 6 October testing: The student first enrolled in U.S. schools between November 1, 2006 and October 31, 2007.
- The student is enrolled in a public school in Delaware, leaves the state for more than 90 calendar days (the days between June 9 and August 28 do not count as part of the 90 days), returns to the state, and the returning date of enrollment in Delaware public schools is less than one year from the date of the first DSTP test administered in the school. (Note: when student re-enters after the 90 day break, he/she will need to be retested for English language proficiency).

Exemption from Science and Social Studies Tests

96. Exempted from the science and social studies tests (grades 4, 6, 8, and 11).

Criteria for Receiving an Exemption from the Reading and Writing Tests

If a student receives an exemption, he or she is not required to take the reading and writing DSTP. The following are the criteria for receiving an exemption from the reading and writing tests:

- It is the student's first year of enrollment in U.S. schools; AND

- The decision to grant an exemption is made on an individual basis weighing the factors outlined in these *Inclusion Guidelines*.

An ELL student is considered to be in the first year of enrollment in U.S. schools under the following condition:

- The student is new to the United States, AND is in the first year of enrollment in U.S. schools, AND the student is new to the United States AND is in the first year of enrollment in U.S. schools, AND The student first enrolled in U.S. schools between April 1, 2007 and March 31, 2008.

Exemption from the Reading and Writing Tests

98. Student is not required to take the reading and writing tests (students in grades 2-10 enrolled in U.S. schools less than one year).

English Language Learner Accommodations Form

for use between May 1, 2007 & April 30, 2008

SIDE 1 of 2

Fill in boxes for accommodations to be provided (A blank indicates the accommodation is not allowed.)		DSTP				
Date Form Completed: _____		Social Studies	Science	Mathematics	Writing	Reading
State Student ID: _____ Teacher's Name _____ Last Name: _____ First Name: _____ Date Student Enrolled in U.S. Schools: _____ Date Student Enrolled in Delaware Public School System: _____	Grade: _____ School Code: _____ Date of Birth: _____ District Code: _____					
66. Administering the test to a student individually in separate location.		<input type="checkbox"/>	<input type="checkbox"/>	<input type="checkbox"/>	<input type="checkbox"/>	<input type="checkbox"/>
67. Administering the test in a small group in separate location.		<input type="checkbox"/>	<input type="checkbox"/>	<input type="checkbox"/>	<input type="checkbox"/>	<input type="checkbox"/>
94. Reading, re-reading in ENGLISH the test directions, questions, multiple-choice options. Mathematics, Science, and Social Studies ONLY. Indicate with a ✓ ___ all allowable items OR ✓ ___ items requested by student. (If you would like to simplify or paraphrase, choose #82 also.)		<input type="checkbox"/>	<input type="checkbox"/>	<input type="checkbox"/>		
68. Using an electronic or written bilingual dictionary for test. (Word for word translation only)		<input type="checkbox"/>	<input type="checkbox"/>	<input type="checkbox"/>	<input type="checkbox"/>	
78. In a small group or individually, administering two side-by-side tests at the same time, one version in Spanish and the second in English . Not available for the reading and writing tests. It is recommended that the interpreter/test administrator be proficient in Spanish. (Students who use the Spanish translation of the mathematics test also receive a translation of all support materials, including the revision and editing checklist, the pre-writing sheets, and math-reference sheets.) DSTP score aggregated, SAT-10 score NOT aggregated. (If you choose 78 for a content area, you cannot choose 79 for that content area.)		<input type="checkbox"/>	<input type="checkbox"/>	<input type="checkbox"/>		
79. Administering the entire test in Spanish . Interpreter/Test administrator must be proficient in Spanish. (Students who take the Spanish translation of the mathematics test also receive a translation of all support materials, including the revision and editing checklist, the pre-writing sheets, and math-reference sheets.) (If you choose 79 for a content area, you cannot choose 78 for that content area.) DSTP score aggregated, SAT-10 score NOT aggregated.		<input type="checkbox"/>	<input type="checkbox"/>	<input type="checkbox"/>		
85. In a small group or individually, using an interpreter to translate directions, prompts, and/or test questions (including multiple-choice options) . Passages on the reading test or the text-based writing CANNOT be translated unless student also has accommodation 84 . Interpreter/Test administrator must be proficient in the native language.		<input type="checkbox"/>	<input type="checkbox"/>	<input type="checkbox"/>	<input type="checkbox"/>	<input type="checkbox"/>

The DSTP Accommodations on this form **must** be entered into DELSIS **PRIOR** to the administration of the DSTP.
Use this form between May 1, 2007 and April 30, 2008

English Language Learner Accommodations Form for use between May 1, 2007 & April 30, 2008

SIDE 2 of 2

Fill in boxes for accommodations to be provided (A blank indicates the accommodation is not allowed.)	Social Studies	Science	Mathematics	Writing	Reading
86. Giving extra breaks.	<input type="checkbox"/>	<input type="checkbox"/>	<input type="checkbox"/>	<input type="checkbox"/>	<input type="checkbox"/>
87. Completing the test over multiple blocks of time. Testing can be continued on a subsequent day. A break between testing days must be a break between test sessions. No test session will be started unless it can be finished before the end of the school day. Instead, that session will be continued on a subsequent day.	<input type="checkbox"/>	<input type="checkbox"/>	<input type="checkbox"/>	<input type="checkbox"/>	<input type="checkbox"/>
76. Student responding to the test by writing responses in Spanish. It is recommended that the interpreter/test administrator be proficient in Spanish.	<input type="checkbox"/>	<input type="checkbox"/>	<input type="checkbox"/>		<input type="checkbox"/>
102. For written responses, student dictates to a test administrator in ENGLISH following the scribing protocol.	<input type="checkbox"/>	<input type="checkbox"/>	<input type="checkbox"/>	<input type="checkbox"/>	<input type="checkbox"/>
90. On the writing test (includes text-based writing), student uses native language to write the first draft.				<input type="checkbox"/>	
82. Simplifying or paraphrasing test directions or items (including multiple-choice options) in English or native language. Interpreter/Test administrator must be proficient in the native language. DSTP score NOT aggregated, SAT-10 score NOT aggregated	<input type="checkbox"/>	<input type="checkbox"/>	<input type="checkbox"/>	<input type="checkbox"/>	<input type="checkbox"/>
83. On the SAT-9 or SAT-10 mathematics portions of the test, interpreter translates questions and options into student's native language. (Use for languages other than Spanish or Summer re-test in grades 3, 5, and 8 and for grade 10 retest in Summer and October. No aggregated data is published for retests.) Interpreter/Test administrator must be proficient in the native language. SAT-9 or SAT-10 score not aggregated.			<input type="checkbox"/>		
84. In a small group or individually, using an interpreter to translate reading passages in the reading test or the text-based writing into student's native language . Interpreter/Test administrator must be proficient in the native language. DSTP score NOT aggregated, SAT-10 score NOT aggregated.				<input type="checkbox"/>	<input type="checkbox"/>
91. Unique accommodations. Request must be submitted online and approved by DOE.	<input type="checkbox"/>	<input type="checkbox"/>	<input type="checkbox"/>	<input type="checkbox"/>	<input type="checkbox"/>
96. Exempted from the science and social studies tests (students in grades 4, 6, 8, and 11 who have been in DE schools for less than one year. Grades 8 and 11 May testing: students first enrolled in U.S. schools between June 1, 2006 and May 31, 2007 are eligible. Grades 4 and 6 October testing: students first enrolled in U.S. schools between November 1, 2006 and October 31, 2007 are eligible.)	<input type="checkbox"/>	<input type="checkbox"/>			
98. An exemption from the reading and writing tests (students in grades 2-10 enrolled in U.S. schools less than one year. students first enrolled in U.S. schools between April 1, 2007 and March 31, 2008 are eligible.				<input type="checkbox"/>	<input type="checkbox"/>

An accommodation for an ELL may be introduced for the first time in the DSTP testing situation if it is not completely unfamiliar to the student.

The DSTP Accommodations on this form **must** be entered into DELSIS **PRIOR** to the administration of the DSTP.
Use this form between May 1, 2007 and April 30, 2008



A Note About Test Security

In most cases, it is never appropriate for district or school personnel to photocopy or duplicate test materials in any way or for any purpose. However, in order to provide certain accommodations, it is sometimes necessary for school personnel to create overhead slides of test booklet pages or to create enlarged images of test booklet pages (for example, accommodation #9 for students with disabilities.)

Once these copies are created, they should be treated with the same care that all secure test materials are afforded.

After administering the test, the school test coordinator must be sure that all such materials have been shredded.

In addition, accommodation #26 allows students to respond to the test using a word processor. The school test coordinator must verify that after printing the student responses, all electronic copies of these responses are deleted.

All special versions of the test, including large print, Braille, Spanish translations and Kurzweil are secure materials and must be treated as such.

All personnel involved in administering the testing accommodations to students or handling test materials must review the Test Security Policy on the following two pages and see the test coordinator to sign the security certifications.

TEST SECURITY POLICY

The State of Delaware has invested significant time and resources on the Delaware Student Testing Program (DSTP). Test security and the confidentiality of the testing program is vital to maintain the validity, reliability, and fairness of the test results; and a breach in test security and confidentiality could result in invalid test scores. The General Assembly of the State of Delaware added Subchapter IV to Chapter 1, Title 14 of the Delaware Code. This legislation enumerates the violations and provides for the sanctions for violations.

“It is a testing security violation for an individual to fail to follow DSTP test administration procedures promulgated by the department, and no individual shall:

- (a) Give any examinee access to secure test items or materials except in the regular course of an authorized administration of the DSTP;
- (b) Give unauthorized individuals or other persons access to secure test items or materials;
- (c) Copy, reproduce, use or otherwise disclose in any manner inconsistent with test security regulations and procedures any portion of secure test materials;
- (d) Provide answers orally, in writing, or by any other means to any examinee;
- (e) Coach any examinee during testing by giving the examinee answers to secure test questions or otherwise directing or guiding a response or by altering or interfering with the examinee’s response in any way;
- (f) Fail to follow security regulations and procedures for the storage, distribution, collection and return of secure test materials, or fail to account for all secure test materials before, during, and after testing;
- (g) Fail to properly monitor test administration, including permitting inappropriate collaboration between or among individuals;
- (h) Administer secure DSTP tests on dates other than those authorized by the Department;
- (i) Participate in, direct, aid, counsel, assist, encourage, or fail to report any of the acts prohibited in this subchapter; or
- (j) Refuse to disclose to the Department information regarding test security violations;
- (k) Refuse to cooperate in the investigation of a suspected breach of test security whether such investigation is conducted by a school district or the Department. The investigation shall include a review of mitigating circumstances, if applicable.”

In addition,

“(a) School districts and individuals shall not:

- (1) Fail to report test scores, numbers of students tested, or any other data element required to be reported to the Department;
 - (2) Report incorrect or otherwise inaccurate test scores, numbers of students tested, or any other data element required to be reported to the Department;
 - (3) Exclude a student from participation in the DSTP except in accordance with the regulations of the Department; or
 - (4) Refuse to disclose to the Department information concerning a violation of the foregoing data reporting requirements.
- (b) Refuse to cooperate in the investigation of a suspected data reporting violation whether such investigation is conducted by a school district or the Department. The investigation shall include a review of mitigating circumstances, if applicable.”

The following civil sanctions for violations are provided for a student who violates any of the testing behavior provisions. The student “shall be subject to the following:

- (1) At the discretion of the Department, the test score of such student may be invalidated and the student may be declared ineligible to retake the test until the next official testing opportunity; and
- (2) Be subjected to such disciplinary action as deemed appropriate by the student’s school district.”

Any individual other than a student who violates any of the above provisions “shall be subject to the following:

- (1) Such personnel sanctions as might otherwise be imposed by the individual’s employer for an act of misconduct;
- (2) Be subjected to a hearing conducted by the Professional Standards Board to determine revocation of any license issued to such individual pursuant to the provisions of Chapter 12 of this Title; and
- (3) Payment of any costs incurred by the State or Department as a result of the violation.”

APPENDIX A

Scribing Protocol for DSTP

Choosing a Scribe

- It is preferable for the scribe to be a familiar person such as the teacher or teaching assistant who is typically responsible for scribing during regular instruction.
- For students who are deaf, the scribe must be fluent in receptive and expressive American Sign Language (ASL) and/or English.
- Scribes will review the Test Security policy on pages 38-39 and will sign all statements required of testing proctors including the security certifications.

Scribing Process

- Student will dictate sentences or paragraphs in the same manner used during instruction.
- Student is responsible for punctuation and may indicate punctuation in several ways.
 - Student may punctuate as they dictate. For example, when stating the sentence “The cat ran.” the student will say, “The cat ran period.”
 - Student may dictate more than one sentence at a time and add punctuation after the fact when given the scribed sentences to proofread.
- Scribe can automatically capitalize in these cases:
 - Scribe should capitalize the first letter in the beginning of a sentence if the student has indicated punctuation ending the previous sentence. For example, if the student said, “The cat ran period. The cat jumped period.” The scribe would write “The cat ran. The cat jumped.”
 - The first word in any paragraph.
- Student must specify capitalization in these cases:
 - The first letter in the beginning of a sentence, if the student has not indicated punctuation ending the previous sentence. For example, if the student said, “The cat ran. The cat jumped.” The scribe would write “The cat ran the cat jumped.”
 - Other capitalization (e.g. capitalization of proper nouns, acronyms, etc).

- Scribe may read back the dictation for proofreading.
- When ASL is being used during scribing, the scribe may ask clarifying questions regarding the use of classifiers.
- Scribe will write exactly what is heard. Probing or clarifying questions are not allowed except in the case of classifiers for students using ASL.
- Scribes will use correct spelling.
- Students may proofread to add punctuation, and may change any capitalization or spelling they wish even if it is incorrect.
- Scribes may not question or correct student choices.
- The student may dictate changes to the scribe, and scribe will make those changes exactly as dictated by student.
- A scribe may hand write, type, or use a laptop to record the student's work. If the scribe types and prints out the student's responses, the responses do not need to be transcribed into the response booklet. See the school test coordinator for special handling of these responses.
- If the student is using a tape recorder or videotape for later transcription by a scribe, it is advisable to have two people listen or view as a reliability check for accuracy.
- For an accuracy check, scribes may record the session on audio or videotape for play back.
- Scribes may draw diagram or pictures described by the student if the student is unable to draw the diagram or picture.

Scribing Protocol for Students Having the DSTP Presented in American Sign Language

Choosing a Scribe:

For students who are deaf, the scribe should be proficient in receptive and expressive American Sign Language (ASL) and/or English.

It is preferable for the scribe to be a familiar person such as the teaching assistant who is typically responsible for scribing during regular instruction.

Scribes will review the Test Security policy and will sign all statements required of testing proctors including the security certifications.

Scribing Process:

Student will use ASL to explain their answers in the same manner used during instruction.

The scribe will make conceptual translations from ASL to English.

When translating, the scribe will use correct spelling and put punctuation and language conventions in the appropriate places.

Student indicates when s/he is satisfied with the work.

The student and scribe are to be familiar with the scribing process prior to testing.

General Process for Scribing:

- Student sign their answer first. Scribe takes notes.
- Scribe asks student to re-sign parts as needed.
- Scribe signs written answer back to student.
- Scribe makes changes per student correction or clarification.
- Scribe will restate the written ASL-English translation to the student.
- Student will indicate when s/he is ready to move on to the next question.

Scribe can only ask clarifying questions about concepts or classifiers that are signed by the student.

Scribes may not question or correct student answers.

Appendix B

Instructions for Submitting a Unique Accommodation Request

To submit a Unique Accommodation Request, the school test coordinator (STC) must follow these steps:


1. First, fill out the **Students with Disabilities Unique Accommodations Worksheet** (Appendix C) or the **English Language Learner Unique Accommodations Worksheet** (Appendix D).
2. Go to the DSTP Test Coordinator's page at <http://www.doe.state.de.us/AAB/coordinator/>.
3. Click on the link [DSTP Online System for Special Exemptions, Incidents and Unique Accommodations](#)
4. Your browser will be directed to the DOE Single SignOn Page. Enter your username and password.


DDOESSO SignOnPage - Microsoft Internet Explorer

File Edit View Favorites Tools Help

Back Forward Stop Refresh Home Search Favorites Media Print

Address <https://login.doe.k12.de.us/DDOESSO/SignOnPage.aspx?ReturnUrl=%2FDDOESSO%2FHome%2FHome.aspx>

 **DDOE Single SignOn Page**
Authorized Users Only



DDOESSO

- SignOn
- Contacts/Password
- Request Account
- Help

SignOn ID

Password

Remember Me

Authorized Users Only

This system is for use only by employees of the Department of Education (DOE) and its authorized clients. To protect the system from unauthorized or inappropriate use and to ensure that it is functioning properly, the system is monitored by system administrators at the DOE. By using this system, you expressly consent to such monitoring and waive any privacy claim. Unauthorized or inappropriate use may result in the termination of access to the system. Evidence of possible criminal activity will be disclosed to the appropriate law enforcement agency. Anyone using this system expressly consents to comply with the State of Delaware's acceptable use policy which can be found at <http://www.doe.state.de.us/sitrlaw.htm>. Violation of this policy may result in termination of access to the system and, in the case of employees of the DOE, disciplinary action up to and including dismissal.



5. Then click on the link “DOE Exemptions & Incidents.”

DDOE Single SignOn Homepage - Microsoft Internet Explorer

File Edit View Favorites Tools Help

Back Forward Stop Home Search Favorites Media Print

Address <https://login.doe.k12.de.us/DDOESSO/home/home.aspx>

 **DDOE Single SignOn
Homepage** 

DDOESSO

- Homepage
- Contacts
- Request Account
- Account Settings
- Help
- SignOut

Select an application below hdennis@doe.k12.de.us

Applications	Notes
AYP Accountability Reports	AYP Accountability Reports
DELSIS	Delaware Student Information System
DOEAC Submission	DOE Activity Calendar Event Submission
DSTP Exemptions & Incidents	DSTP Online System for Reporting Special Exemptions, Incidents and Unique Accommodations
DSTP-OR	DSTP OnLine Reports

SignOut

Copyright © 2003-2005 Delaware DOE, TMD Group EMail WebSite comments to [Site Developer](#)
URL: <http://www.doe.state.de.us/> Last Updated 2/11/2005

5. Once the School Test Coordinator has logged into the Online System, click on “Unique Accommodation (ELL)” or “Unique Accommodation (SpecEd)” under “Create Request.”
6. Fill out the online form, using the information you wrote on the Students with Disabilities Unique Accommodation Worksheet (Appendix C) or the English Language Learners Unique Accommodation Worksheet (Appendix D). Be sure to click on each of the tabs to enter the required information. When you have entered all the information, click “Submit.”
- 7.

Test Administration	Deadline for submission of Unique Accommodations Requests
Summer Re-test 2007	June 17, 2007
October 2007	September 20, 2007
March 2008	February 9, 2008
May 2008	April 25, 2008
Summer Re-test 2008	June 17, 2008

Delaware.gov
Visit the Delaware State Portal



DOE Home | DSTP Main | DSTP Test Coordinator Main | Contact Us | DE Home | DDOE Single SignOn

Welcome, Helen Dennis

Organization: Department Of Education

Create a Unique Accommodation Request (English Language Learners)

Menu

DDOESSO

- Welcome Page
- DSTP Registration Forms
- Benchmarking Nominations

Create Request

- Incident Report
- DSTP Special Exemption
- DAPA Special Exemption
- Unique Accommodation (ELL)
- Unique Accommodation (SpecEd)

Change Request

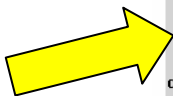
- Incident Report
- DSTP Special Exemption
- DAPA Special Exemption
- Unique Accommodation

Submission Administration

- Review Submission
- Check Status

General

- Reports
- Online User Manual
- Download pdf version...
- Sign Out



District: Academy of Dover Charter School

School: Academy Of Dover Charter School

Grade: (Select One)

Date Of Occurrence: 4/10/2007

Test Administration: July

Student Tab | Details Tab | Profile Tab | Skills & Scores Tab | Performance Tab | Addtl Information Tab

Student (First, Last): [Lookup Student...](#)

Student ID:

Yes, I am sure there are no accommodations listed in the Inclusion Guidelines that might be used instead of the unique accommodation requested.

APPENDIX C

Delaware Student Testing Program

Students with Disabilities Unique Accommodation Worksheet

The information on this worksheet must be submitted by the School Test Coordinator in the Online System for Incidents, Exemptions, and Unique Accommodations. **Use this form for IEP Meetings and 504 Plan Meetings between May 1, 2007 and April 30, 2008**

District _____

School _____

Grade _____ Date _____

Test administration: March May July October

Yes, I am sure there are no accommodations listed in the Inclusion Guidelines that might be used instead of the unique accommodation requested.

Student Tab:

Student First Name _____ Last Name _____

Student ID _____

Details Tab

This accommodation is requested for the following content area(s):

Reading Writing Mathematics Science Social Studies

Description and Additional Information Tab

Describe the Unique Accommodation being requested with any additional information to justify the request:

Do you plan to submit additional materials to DOE support your request? Yes No

If you wish to submit additional materials to support your request, mail them via USPS or State Mail to:

USPS:

Delaware Department of Education
Exceptional Children Workgroup
ATTN: Unique Accommodations
401 Federal Street, Suite 2
Dover, DE 19901-3639

State Mail:

Delaware Department of Education
Exceptional Children Workgroup
ATTN: Unique Accommodations
State Mail Code: D370B

The information on this worksheet should be submitted in the Online System for Incidents, Exemptions, and Unique Accommodations at least a month in advance of the date the student is to be tested. The respective due dates are as follows: Jun 20, 2007, Sept 20, 2007, Feb 10, 2008, and Apr 25, 2008. Do NOT mail or FAX this form to DOE.

APPENDIX D

Delaware Student Testing Program

English Language Learners Unique Accommodation Worksheet – Side 1

The information on this worksheet must be submitted by the School Test Coordinator in the Online System for Incidents, Exemptions, and Unique Accommodations. Use **this form between May 1, 2007 and April 30, 2008.**

District _____

School _____

Grade _____ Date _____

Test administration: March May July October

Yes, I am sure there are no accommodations listed in the Inclusion Guidelines that might be used instead of the unique accommodation requested.

Student Tab:

Student First Name _____ Last Name _____

Student ID _____

Details Tab

This accommodation is requested for the following content area(s):

Reading Writing Mathematics Science Social Studies

NOTE: Apply for #91 for requesting an accommodation that is not already listed on the ELL Accommodation form. A Justification must accompany the request.

Profile Tab

Date student entered the Delaware Public Schools: _____

How many years has student been in Delaware? _____

Did the student have a break in Delaware education? Yes No

If so, how long? _____

Where did the student go during this break? _____

Was the student schooled during this break? Yes No

The information on this worksheet should be submitted in the Online System for Incidents, Exemptions, and Unique Accommodations at least a month in advance of the date the student is to be tested. The respective due dates are as follows: Jun 20, 2007, Sept 20, 2007, Feb 10, 2008, and Apr 25, 2008. Do NOT mail or FAX this form to DOE.

SIDE 2 OF THE DSTP ELL UNIQUE ACOMMODATIONS WORKSHEET
Use this form between May 1, 2007 and April 30, 2008

Skills & Scores Tab

Describe the student's native language and/or English skills:

What are the ACCESS proficiency levels?
(For the October '07, March '08, May '08 and July '08 test administrations #91)

Speaking _____ Listening _____ Reading _____

Writing _____ Composite: _____ Tier Level _____

Describe the student's ability in the following areas:

Math: _____

Reading _____

Writing _____

Science _____

Social Studies _____

Performance Tab

Has the student been retained in one or more grades? Yes No Which grades? _____

Has the student been recommended for further evaluation for special education? Yes No

Description and Additional Information Tab

Specify the accommodation being requested with any additional information to justify the request:

The information on this worksheet should be submitted in the Online System for Incidents, Exemptions, and Unique Accommodations, by the following dates: Sept 20, 2007, Feb 10, 2008, and Apr 25, 2008. Do NOT mail or FAX this form to DOE.

Appendix E

Directions for Entering or Updating DSTP Accommodations for Students with Disabilities in DELSIS

1. First, go to the DSTP Test Coordinator's page at <http://www.doe.state.de.us/AAB/coordinator/> .
2. Click on **DELSIS LOGIN PAGE** .
3. Your browser will be pointed to the **DOE Single Sign On** page. Enter your username and password.
4. Click on "DELSIS."
5. Click on "DSTP Accommodation Update."
6. Scroll Down. For "Please indicate type of student," check to make sure "Special Education" is selected.
7. Click on "Modify Accommodations."
8. Enter the state ID for student.
9. Click on "Search."
10. Select student from list by clicking in the "Select" column.
11. Click on "Continue."
12. Gray boxes will show current information. Scroll down to yellow area to make corrections.
13. Click on "Add to Current Accommodations" or "Replace Current Accommodations," as appropriate.
14. Update accommodations (add or replace).
15. Scroll down. Click on "Confirm Adding."

Directions for Entering or Updating DSTP Accommodations for ELL Students in DELSIS

1. First, go to the DSTP Test Coordinator's page at <http://www.doe.state.de.us/AAB/coordinator/> .
2. Click on **DELSIS LOGIN PAGE** .
3. Your browser will be pointed to the **DOE Single Sign On** page. Enter your username and password.
4. Click on "DELSIS."
5. Click on "DSTP Accommodation Update."
6. Scroll Down. For "Please indicate type of student", click on "ELL."
7. Click on "Modify Accommodations."
8. Enter the student's state ID.
9. Click on "Search."
10. Select student from list by clicking in the "Select" column.
11. Click on "Continue."
12. Gray boxes will show current information. Scroll down to yellow area to make corrections.
13. Click on "Add to Current Accommodations" or "Replace Current Accommodations," as appropriate.
14. Update (add or replace) appropriate accommodations.
15. Scroll down, click on "Confirm Adding."

Appendix G

List of Acronyms

AAC device:	Augmentative alternative communication device
ACCESS:	Assessing Comprehension and Communication in English State-to-State
ASL:	American Sign Language
DAPA:	Delaware Alternate Portfolio Assessment
DELSIS:	Delaware Student Information System
DSTP:	Delaware Student Testing Program
ELL:	English Language Learner
ESL:	English as a Second Language
IDEA:	Individuals with Disabilities in Education Act
IEP:	Individualized Education Program
LAS:	Language Assessment Scales
SAT-9:	Stanford Achievement Test, 9 th Edition
SAT-10:	Stanford Achievement Test, 10 th Edition
SD:	Student with disabilities
SD/ELL:	Student with disabilities who is also an English Language Learner